

# ALASKA

ABOARD THE 62-GUEST NATIONAL GEOGRAPHIC SEA LION & SEA BIRD | 2016

**GO DEEPER**  
INTO THE FAR  
REACHES OF  
WILD ALASKA

**EXPLORE MORE**  
ADD ANCESTRAL  
HAIDA GWAI

**FREE AIR**  
ON SELECT MAY &  
JUNE DEPARTURES



Lindblad  
Expeditions



NATIONAL  
GEOGRAPHIC™





DEAR TRAVELER,

If you've been promising yourself, or your family, a trip to Alaska—this might be the year. It's certainly a historic one the 100th Anniversary of the National Park Service. The organization and its work in protecting and managing America's wild places have been referred to by many as this country's greatest idea. And when you're in Glacier Bay I think you'll find it easy to agree. And you'll likely congratulate yourself for choosing to have the experience with us—aboard the intimately-scaled, nimble *National Geographic Sea Lion/Bird*—since you'll go deeper inside Glacier Bay and its environs than you could aboard a large cruise ship.

You'll want to be on deck as we sail through the Bay's ever-changing landscape, dramatically different than when John Muir visited between 1879 and 1899. And certainly since the native Tlingit people inhabited the lower bay until around 300 years ago, when the advancing glacier forced them out. You'll share the deck with a small band of like-minded others, and top naturalists for insightful commentary on all you'll observe. And, you'll also benefit from the onboard presence of a Tlingit cultural interpreter and a National Park Ranger for their unique and personal perspectives on the Bay's scenic vistas and history.

Outside of Glacier Bay, you'll find Alaska's Inside Passage rich with wildlife—from the coastal brown bears that roam the shores and streams, to feeding humpback whales, to the sea creatures far below the surface, which our undersea specialists, key members of our expedition team, will reveal to you, in surprising and colorful detail, through their dive videos.

You'll have the opportunity for personal explorations too, as we make landfall on beaches to hike old-growth forests, and drop kayaks, so you can explore quiet coves or paddle past rafting otters; and to take your best photos ever. Our expeditions feature Lindblad-National Geographic certified photo instructors to inspire and assist you, and Alaska will provide incredible photo ops.

So I hope that you'll join us as we celebrate the anniversary of the National Park Service, wild Alaska, and the advantage of going in deeper to explore it all together.

Sincerely,



Sven-Olof Lindblad

P.S. Plan your Alaska travel in May or June and you'll not only catch the annual spring awakening, you'll benefit from our Free Air offer, too. Please see page 21 for more details.





# THE WONDER OF ALASKA

Enter a maze of fjords and channels lined with ancient forests where towering mountains rise from the sea and colossal glaciers carve the living landscape. Hear the thunderous crack of a calving glacier dropping ice hundreds of feet into the sea, and hike the spongy trails of old-growth forests. Linger in calm bays to watch humpback whales feed and keep an eye out for killer whales on the hunt. See hauled-out Steller sea lions, feeding puffins, mountain goats picking their way along a rocky shore, and bald eagles perched in massive Sitka spruce trees.

Our nimble expedition ships and special permits from the National Park Service and U.S. Forest Service allow us to sail far into Glacier Bay National Park and wild, remote regions of the Tongass National Forest. And welcoming locals make our visits to Alaska's uniquely roadless towns and charming fishing villages a lasting memory.

*Clockwise from top: Predawn light paints Haida Gwaii, an archipelago of ancient forests and endemic life; humpback whales feed in the fast-moving channels of Southeast Alaska; fishing bald eagle; these coastal brown bears, with their protein-rich diets, grow much larger than their inland relatives.*









# THE RICHEST WHALE VIEWING EXPERIENCE POSSIBLE

In spring humpbacks converge in Alaska. Our ships' nimble design allows us to go deeper into the narrow, fast-moving, nutrient-rich channels and along undersea shelves where they feed. With our knowledge and skill in timing, we can position perfectly to be "there" when whales are—creating amazing observations and photo ops. In addition, researchers from the Alaska Whale Foundation come aboard to share their knowledge and latest findings about humpback behavior. They are able to provide insight into some of the whale behaviors we may see, including tail-lobbing, lunge-feeding, and even bubble-net feeding strategies. And if the opportunity arises, our naturalists may even drop a hydrophone to reveal the whales' communication, or give you a whale's-eye view through exclusive footage shot by National Geographic's Crittercam team.



*Dr. Fred Sharpe*

***Watching humpback whales is a life-changing experience. Lindblad Expeditions-National Geographic has contributed to the knowledge base of this unique community of these findings with travelers in the depths of the Alaskan wilderness.***

—DR. FRED SHARPE, PRINCIPAL INVESTIGATOR,  
ALASKA WHALE FOUNDATION

▶ SEE WHAT IT'S LIKE AT [EXPEDITIONS.COM/WHALES](https://www.lindblad.com/expeditions.com/whales)







*Onboard experts explain whale behaviors, like breaching, as they occur.*





*Expedition landing craft and photographers, Sawyer Glacier, Tracy Arm Fjord.*

# EXTRAORDINARY PHOTO OPS PLUS EXPEDITION PHOTOGRAPHY



*From smartphones to point & shoot, to DSLRs, our staff will offer insight along the way.*

Make the most of Alaska's long days and unrivaled photo ops. Our Expedition Photography program will enable you to "see" glaciers, whales, bears, and eagles with fresh eyes, as our onboard Lindblad Expeditions-National Geographic certified photo instructor offers assistance, instruction, and shooting tips in the field. Their expertise will inspire you, and help you improve your skills—no matter your current skill or interest level—and ensure you return home with incredible photos. You don't need to be a pro photographer to go home from Alaska with great shots! See some guest photos at [expeditions.com/AlaskaGuest](https://www.expeditions.com/AlaskaGuest).





# NATIONAL GEOGRAPHIC

Certain specific departures are designated Photo Expeditions, offering immersion in the world of professional travel and wildlife photography. They provide unprecedented opportunities to shoot with and learn from a National Geographic photographer, plus two Lindblad-National Geographic certified photo instructors. Outings are timed to take advantage of the best light, and onboard seminars and photo talks offer tips and tricks. Photo Expeditions include all the same experiences and opportunities as all our expeditions—kayaking, hiking, and up-close encounters with wildlife—plus the chance to develop photography skills that will last a lifetime.

Lindblad Expeditions and National Geographic have joined forces to further inspire the world through expedition travel. Our collaboration in exploration, research, technology and conservation will provide extraordinary travel experiences and disseminate geographic knowledge around the globe.

## Choose a select departure and learn from these top National Geographic Photographers.



**JEFF MAURITZEN**  
APR. 30  
Seasoned photographer & lecturer on natural history-focused expeditions.



**FLIP NICKLIN**  
AUG. 27 & SEP. 3  
Alaska resident and legendary marine mammal photographer.



**KRISTA ROSSOW**  
MAY 1  
A talented, patient photo educator and a photo editor for *National Geographic Traveler*.



**RICH REID**  
AUG. 28 & SEP. 4  
Filmmaker, environmental and adventure photographer.



**MICHAEL MELFORD**  
JUN. 12 & 19  
A National Geographic Society photographer for over 25 years.

**2016 PHOTO EXPEDITIONS**  
**Exploring Alaska's Coastal Wilderness:**  
 Jun. 12, 19; Aug. 27, 28  
**A Remarkable Journey to Alaska, British Columbia & Haida Gwaii:** Apr. 30; May 1; Sep. 3, 4





Left: Native Hamatsa dancer inside Big House at Alert Bay. Right: Totem poles at the Haida Heritage Centre. Below: Traditional Haida carving.

# SPECIAL ACCESS TO THE MYTHIC & MYSTIC HAIDA GWAI



Though Haida Gwaii, a spectacular archipelago off British Columbia, is known as the “islands at the edge of the world,” it is well within reach aboard *National Geographic Sea Bird* and *Sea Lion*—the only U.S. vessels permitted to visit these hallowed islands in over 20 years. In large part, we were initially permitted to visit Haida lands because of our commitment to artisans, evidenced by our Artisan Fund and its varied projects, currently financed by a percentage of sales from onboard Global Galleries.

The Haida are legendary Pacific coast artists and artisans. And to see their works, most strikingly the totems created by master carvers, and to hear the stories woven into the very fibers of Haida regalia, is indeed a privilege. We will visit the Haida Heritage Centre at Kay Lnagaay, see a panoply of Haida art and crafts, even see artists at work. But we will also experience the rare, spiritually satisfying adventure of exploring the coasts and landing on remote beaches to share the silence with silvered sentinels—the weathered totems, carved lifetimes ago, that have kept watch on Haida lands since the first days.

We will be accompanied by Haida cultural interpreters, experts on their heritage. And we will encounter a wealth of cultural objects—including at legendary SGang Gwaay Lnagaay, where silvered totem poles some 150-200 years old line the shore. UNESCO listed SGang Gwaay as a World Heritage site in 1981, the same year they registered the Serengeti, Great Barrier Reef, and the Old City of Jerusalem and its walls as World Heritage sites. We are privileged to explore Haida Gwaii, and are proud to share the opportunity with you.







*“We feel so privileged to be able to offer our guests the opportunity to visit Haida Gwaii, and interact with this community of first generation people, and to experience their art and handcraft, among the most extraordinary in the world, first hand from the artists themselves. And to travel up and down the coast, landing on some of the extraordinary beaches where some of the totems, over a hundred years old, beautifully weathered, still remain...”*

—STACY SINDLINGER, DIRECTOR OF ARTISAN DEVELOPMENT, LINDBLAD EXPEDITIONS

*A century-old mortuary pole still stands at the ancestral village of SGang Gwaay LInagaay.*



# EVEN EXPLORE ALASKA'S VIVID UNDERSEA

See more of Alaska than you ever imagined. No other travel company offers an exploration of the vivid and surprising undersea life found in Alaska. On every departure your undersea specialist will don special cold-water diving gear to explore the depths of the undersea to shoot video of the otherworldly creatures, which you'll see on TV screens from the comfort of the lounge. See the vast kelp forests swaying in the currents and discover strange and wonderful marine life: anemones, jellies, rockfish and unusual life forms that are only found beneath the water's surface. Watch as your undersea specialist's bright lights dance across the seafloor, revealing the brilliant purples and greens.

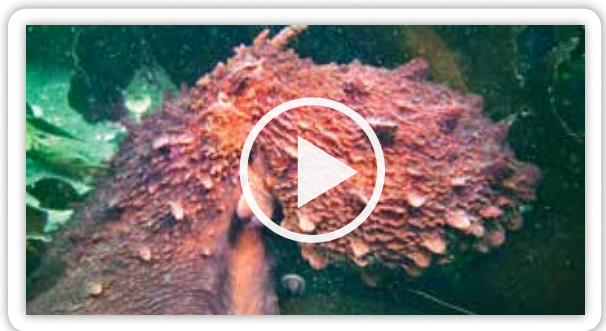




*Left: Nutrient-rich water feeds a vibrant, seldom-seen undersea, including these hooded nudibranch. Above: Our undersea specialist's lights reveal the vibrant seafloor of Alaska.*

*“We found ourselves in a forest of giant plumose anemones...among them hundreds of species of marine invertebrates—each more vibrant than the last. Hermit crabs whose shells had been fully engulfed by sponges, a rare butterfly crab, and six species of sea stars—including the largest on Earth. Sharing the images with everyone aboard brought excitement and shed light on the seldom-seen underwater world.”*

— JEFF LITTON, UNDERSEA SPECIALIST



▶ WATCH A FASCINATING PACIFIC OCTOPUS ENCOUNTER AT [EXPEDITIONS.COM/OCTOPUS](https://www.expeditions.com/octopus)





# FAMILY ADVENTURE WITH MAGIC & MEANING



Leave the commutes, schedules, and screen-staring behind. Discover how a wild, beautiful land and uncommon adventure can unite a family in shared activities—kayak side-by-side through a quiet cove, hike the forest, draw safely near a thundering glacier, spot a bald eagle together, or watch humpback whales surge as they feed. Our expeditions ensure seamless family getaways where everything is taken care of—all you have to do is relax and enjoy the adventure. Kids thrive in the sociable confines of the ship where they can exercise some autonomy, and our naturalists are excellent role models who ably embed learning in every fun activity. And options for activities—short, medium, or long hikes, or a peaceful cruise by expedition landing craft with minimal walking—ensure all fitness levels are accommodated. And since we believe sharing an expedition with your kids or grandkids is a life-enhancing experience, we invite you to take advantage of savings: **\$500 off the double occupancy rate for each person under the age of 18.**

▶ LEARN MORE ABOUT FAMILY ADVENTURES AT [EXPEDITIONS.COM/FAMILY](https://www.expeditions.com/family)





*Clockwise from far left: Tide pooling as an exercise in micro-ecosystems; photo outings accommodate all ages and skill levels; family expedition landing craft cruise; exploring the intertidal zone.*







*Ford's Terror inlet was named by early explorers for its surging tides.*

## Representing our Alaska season team:



### Expedition Leader

**Jen Martin** is an expert at sharing the diversity of wildlife and indigenous cultures of the places we explore.



### Naturalist Lee Moll

is a professional naturalist with a particular interest in botany, marine mammals, ornithology, and geology.



### Naturalist/Certified Photo Instructor Sharon Grainger

also shares her in-depth knowledge of the region's native communities.





# ENHANCE YOUR EXPEDITION WITH THE BEST TEAM IN ALASKA

Learn, see, and do more by exploring with experts who know the region best. Share the adventure with a team of three naturalists, a Lindblad Expeditions-National Geographic certified photo instructor, an undersea specialist and an expedition leader. That's one staff member aboard for every 10 guests—the most robust expedition team working in Alaska. A 6-person expedition team with a wide variety of expertise means perfectly sized groups on hikes, varied perspectives, and more personalized leadership while kayaking, cruising in expedition landing craft, hiking and learning.

▶ LEARN MORE AT [WWW.EXPEDITIONS.COM/EXPERTS](http://WWW.EXPEDITIONS.COM/EXPERTS)



**Undersea Specialist Paul North** is an expert on Pacific salmon and conducts oceanographic research measuring acidification and its effect on plankton.



**Naturalists Pete & Gretchen Pederson** are former Backcountry Rangers and guides in Denali National Park and accomplished wildlife biologists.



**Wellness Specialist Susan Moebus** is a licensed massage therapist, and embodies the mind-body spirit of our expeditions.



# THE PERFECT PLATFORM TO EXPLORE WILD ALASKA



The newly renovated 62-guest twin ships, *National Geographic Sea Bird* and *Sea Lion*, are purpose built for exploring regions like remote Southeast Alaska. A nimble design allows us to sail into spectacular winding fjords carved by glaciers or linger in the shallow, fast-moving channels where whales feed. A fleet of expedition landing craft ensure quick access for all aboard to shores untouched by tourist infrastructure. Share the thrill of spotting diving humpback whales or bears foraging along the shore from the expansive bow—and use onboard tools for deeper exploration. Listen to whale communications via hydrophone, and observe marine life via a bow-mounted camera. A fleet of single and tandem kayaks let you paddle in quiet coves or venture into wind- and water-carved caves. And the new renovations—including updated cabins, a new lounge, bar, and dining room—ensure it is more than comfortable as our base for exploration.





*Clockwise from top: Our ships are ideally suited to sail into shallow, fast-moving channels and fjords; hikes occur daily; observe wildlife from a safe distance on naturalist-led kayaking outings.*





*The lounge and bar comfortably accommodate all guests.*







*Food is fresh, local, and delicious, and dining is always casual.*

# THE PRIVILEGE OF WILDNESS & THE LUXURY OF COMFORT

Aboard the newly renovated *National Geographic Sea Bird & Sea Lion*, daily dining is a nourishing and satisfying experience, thanks to a hotel staff committed to sourcing the highest quality, sustainable local products available, and we think you'll taste the difference. Everything we serve tells a story, from local huckleberry jam to the weekly menu changes based on what local fishermen are catching. Dinner is served in our freshly appointed dining room, invariably following cocktails, hors d'oeuvres, and our signature evening 'Recap' held in the lounge, recently outfitted with a state-of-the-art presentation system and ample space to accommodate all. And, you'll find every cabin aboard the perfect place to end your active day with all new furnishings and comfortable beds, including our signature feather duvets.



*The open bow is a perfect platform for photography.*



*The cuisine on board is fresh, sustainable and accented with a regional flair.*



# EXPLORING ALASKA'S COASTAL WILDERNESS

**8 DAYS/7 NIGHTS—ABOARD NATIONAL GEOGRAPHIC SEA BIRD AND NATIONAL GEOGRAPHIC SEA LION**

PRICES FROM: \$6,490 to \$11,240 (See page 27 for complete prices.)

Experience the remarkable beauty of Southeast Alaska on a voyage aboard the *National Geographic Sea Bird* or *National Geographic Sea Lion* into a land of mist-shrouded fjords, tidewater glaciers, and islands teeming with wildlife. Search for orcas and humpback whales, kayak amid glacial ice, spend a full day in Glacier Bay National Park, and learn about Alaska's rich Tlingit heritage.

## EXPEDITION HIGHLIGHTS

- ▶ Kayak into protected coves and look for sea otters, seabirds, and harbor seals.
- ▶ Hike through lush forests to cascading waterfalls, and ride an expedition landing craft into coves to look for brown bears.
- ▶ Meet members of the Alaska Whale Foundation to learn about the local whale population, and get a firsthand perspective on Alaska's indigenous people from a Tlingit cultural interpreter.
- ▶ Discover Alaska's seldom-seen, vibrant marine life revealed by our undersea specialist.

## EXPERIENCE & EXPERTISE



Our unparalleled 6-person expedition team is key to an in-depth experience.

An expedition leader, three naturalists, a Lindblad-

National Geographic certified photo instructor and undersea specialist, plus a wellness specialist and video chronicler, all contribute to your understanding of Alaska's wonders. Certain departures will feature a National Geographic photographer or expert.

*Visit our website to read staff and guest speaker bios for this expedition.*

*A humpback whale breaches near the ship.*





**DAY 1: JUNEAU, ALASKA/EMBARK SHIP**

Fly from Seattle to Juneau. Meet your naturalists and visit Mendenhall Glacier, set in the dramatic Mendenhall Valley. Settle into your cabin before dinner. Later, explore the port of Juneau on your own. (D)

**DAY 2: TRACY ARM—FORDS TERROR WILDERNESS**

Voyage into Tracy or Endicott Arm, both spectacular fjords, with waterfalls cascading from glacially carved walls. See the soaring Dawes or South Sawyer Glacier up close and take a cruise in an expedition landing craft for an unbeatable view of sculpted icebergs. Keep an eye out for harbor seals, porpoises and arctic terns. (B,L,D)



Petersburg.

**DAY 3: PETERSBURG**

Search for humpback whales as we head towards the small, true Alaskan town of Petersburg on Mitkof Island. Explore a unique Southeast Alaskan ecosystem, the “muskeg,” with stunted trees and carnivorous plants. There is an opportunity for bike riding and an optional floatplane excursion. Enjoy a crab feast this evening. (B,L,D)

**DAY 4: FREDERICK SOUND AND CHATHAM STRAIT**

With luck, we’ll see whales breaching, tail-slapping and feeding. We’ll explore spectacular bays and inlets, following bear trails and salmon streams. Later, hike or kayak for up close exploration. (B,L,D)

**DAY 5: ICY STRAIT AND THE INIAN ISLANDS**

Explore among the Inian Islands, where an abundance of Steller sea lions and sea otters reside. We’ll search for whales in the rich

waters of Icy Strait and choose the perfect spot around Chichagof Island to hike and kayak. (B,L,D)

**DAY 6: GLACIER BAY NATIONAL PARK**

By special permit, we explore Glacier Bay, a not-to-be-missed gem of Alaska. See glaciers that end abruptly at the water’s edge and observe them “calving”—tons of ice crashing into the sea—accompanied by an exhilaratingly thunderous sound. Wilderness abounds—mountain goats and brown bears patrol the shore; harbor seals, Steller sea lions and puffins live in these icy waters. A native Tlingit interpreter joins us to share the lore and legend of the area. We will also be joined by a National Park Service Ranger. (B,L,D)

**DAY 7: SOUTHEAST ALASKA’S ISLANDS, BAYS AND FJORDS**

Today, nature is our guide. We may explore an isolated beach to take a closer look at tide pools, beachcomb, and hike stunning forest trails, or see bear tracks worn into the soil while walking an isolated meadow. Sightings of bald eagles are very common. If conditions permit, we’ll do some kayaking, always watching for marine and terrestrial life. (B,L,D)

**DAY 8: SITKA/DISEMBARK/SEATTLE**

After breakfast we disembark in Sitka, Southeast Alaska’s only oceanfront town. Visit the onion-domed St. Michael’s Russian Orthodox Church. At the Raptor Rehabilitation Center, we have close views of species normally seen at a distance. Drive to the airport for our afternoon flight to Seattle. (B)

**EXPEDITION DETAILS**

**DATES:** 2016: May 14\*, 15\*, 21, 22, 28\*, 29; Jun. 4, 5, 11\*, 12\*📷, 19📷, 25\*, 26\*; Jul. 2, 3, 9\*, 10\*, 16, 23\*, 24\*, 30, 31; Aug. 6\*, 7\*, 13, 14, 20\*, 21\*, 27📷, 28📷

\*Indicates itineraries in the reverse order, from Sitka to Juneau. 📷 Photo Expedition.

**NATIONAL GEOGRAPHIC EXPERT**

Travel with Birgit Buehleier, a National Geographic filmmaker, producer and scientist who has played an integral role in the evolution of National Geographic’s Crittercam, a video camera system that has provided fascinating insights into the daily lives of hundreds of species. Join Birgit on the **July 24, 2016** departure.

**SPECIAL OFFER:**

Book by Mar. 31, 2016 and receive complimentary round-trip airfare between Seattle and Alaska on select May and June departures. New bookings only.

**EXPLORE TONGASS NATIONAL FOREST**

Our Forest Service Special Use Permit for Tongass National Forest enables you to hike and kayak in wild and remote areas of Southeast Alaska.



We know the perfect coves for kayaking.



# A REMARKABLE JOURNEY TO ALASKA, BRITISH COLUMBIA & HAIDA GWAII

15 DAYS/14 NIGHTS

**NATIONAL GEOGRAPHIC SEA BIRD & SEA LION**

PRICES FROM: \$10,900 to \$18,680 (See page 27 for complete prices.)

Join a unique expedition in Alaska's Inside Passage and British Columbia including Haida Gwaii (formerly the Queen Charlotte Islands) off the coast of British Columbia. We are the only company with ships carrying more than 22 guests permitted to visit Gwaii Haanas National Park Reserve, National Marine Conservation Area Reserve, and Haida Heritage site in over two decades. Here, you'll see the ancient totems at SGang Gwaay (Ninstints), a UNESCO World Heritage site, meet with local artisans, in a region rich with history seldom-seen.

## EXPEDITION HIGHLIGHTS

- ▶ Explore glacially-carved fjords, Glacier Bay National Park, and search for humpback whales in their summer feeding grounds.
- ▶ Kayak spectacular bays, see waterfalls cascading from glacially-carved walls, and hike old-growth forest where paw prints outnumber foot prints.
- ▶ Explore ancestral Haida villages, see ancient totem poles, take part in a traditional dance performance, and much more.
- ▶ Be amongst endemic species in Haida Gwaii, considered the "Canadian Galápagos" for its wildlife-rich intertidal zone.

## EXPERIENCE & EXPERTISE

**30+**  
**YEARS**  
**EXPERIENCE**

Our unparalleled 6-person expedition team is key to an in-depth experience. An expedition leader, three naturalists, a

Lindblad-National Geographic certified photo instructor, Haida Cultural Interpreter, and undersea specialist, plus a wellness specialist and video chronicler, all contribute to your understanding of Alaska's wonders. Certain departures will feature a National Geographic photographer or expert.

*Visit our website to read staff bios for this expedition.*

*Standing poles at Ninstints.*



**DAY 1: SEATTLE/EMBARK**

Arrive in Seattle this afternoon and embark the ship. (D)

**DAY 2: GULF ISLANDS, BRITISH COLUMBIA**

Search for orca whales and cruise around forested islands. (B,L,D)



Sea otter.

**DAY 3: JOHNSTONE STRAIT AND ALERT BAY, BRITISH COLUMBIA**

Visit the U'mista Cultural Centre in Alert Bay, where we'll watch traditional First Nations performances and learn from the Kwakwaka'wakw people. (B,L,D)

**DAY 4-5: INSIDE PASSAGE OF BRITISH COLUMBIA**

Head northward along the coastline looking for whales, dolphins, bears, deer and other wildlife. Go ashore to explore or kayak the many bays and inlets. (B,L,D daily)

**DAYS 6-8: HAIDA GWAI**

With a shared respect for the natural world, explore the islands of Haida Gwaii. A Haida cultural interpreter will join us, first visiting the Haida Heritage Centre at Kay Lnagaay to learn about the incredible history of the Haida people and the meaning behind their renowned artwork. In the ancestral town of Old Massett, join in a traditional dance performance and feast, and meet local artisans. Explore the Gwaii Haanas National Park Reserve, National Marine Conservation Area Reserve, and Haida Heritage site. By special permit, see the ancient totems at SGang Gwaay (Ninstints) or K'una (Skedans). Take expedition landing craft around the incredibly biodiverse islands where endemic species thrive. (B,L,D)

**DAY 9: MISTY FJORDS, ALASKA**

Cruise past glacially carved cliffs and kayak in the stillness of Misty Fjords' forested backwaters. (B,L,D)

**DAY 10: FREDERICK SOUND AND PETERSBURG**

Join naturalists on deck and search for orcas, humpback whales, and Steller sea lions. Go ashore for a walk along a quiet forest trail and visit the fishing village of Petersburg, known as "Alaska's Little Norway." Enjoy a crab feast this evening. (B,L,D)

**DAY 11: TRACY ARM-FORDS TERROR WILDERNESS**

Voyage into Tracy or Endicott Arm, both spectacular fjords, with waterfalls cascading from glacially carved walls. See the soaring Dawes or South Sawyer Glacier up close and take a cruise in an expedition landing craft for an unbeatable view of sculpted icebergs. (B,L,D)

**DAY 12: GLACIER BAY NATIONAL PARK**

Spend the entire day among enormous glaciers and expansive wilderness. Listen as the quiet stillness of the area is broken by the thunder of tons of ice calving into the sea. A native Tlingit interpreter joins us to share the lore and legend of the area. A National Park Service Ranger will join us as well. (B,L,D)

**DAY 13: ICY STRAIT AND THE INIAN ISLANDS**

Cruise among the Inian Islands, where an abundance of Steller sea lions reside. Hike nearby islands, kayak and search for whales in rich waters of Icy Strait. Conditions permitting, we'll lower the ship's hydrophone to listen in on the whales' communication. (B,L,D)

**DAY 14: SOUTHEAST ALASKA'S ISLANDS, BAYS AND FJORDS**

Kayak and hike among forested islands on our final exploration of Southeast Alaska. (B,L,D)

**DAY 15: SITKA/DISEMBARK/HOME**

See the picturesque city of Sitka on Baranof Island and meet eagles up close at the Raptor Rehabilitation Center before transferring to the airport for flights to Seattle. (B)

**EXPEDITION DETAILS**

**DATES:** 2016: Apr. 30 📷, May 1 📷;

Sep. 3\* 📷, 4\* 📷

\*These departures travel in the reverse order, from Sitka to Seattle, making all the same stops.

📷 Photo Expedition

**NATIONAL GEOGRAPHIC PHOTOGRAPHERS**

Travel with marine mammal photographer **Flip Nicklin** on the Sep. 3, 2016 departure

or National Geographic photographer **Rich Reid** on the Sep. 4, 2016 departure aboard the *National Geographic Sea Bird & Sea Lion*.

**SPECIAL OFFER:**

Book by Mar. 31, 2016 and receive complimentary one-way air (Sitka/Seattle) on select departures. New bookings only.



## MORE ADVENTURE: ADD DENALI NATIONAL PARK

PRE- OR POST-VOYAGE EXTENSION | 7 DAYS/6 NIGHTS

PRICES: \$5,820 per person double occupancy, \$8,220 per person single occupancy.

Note: This extension is available between June 5 and September 4, 2016. Limited space available.

**M**ake the most of your time in Alaska by combining your expedition with six nights in Denali National Park and add an inland exploration of this iconic land to your coastal adventure. With the idyllic North Face Lodge as your base camp, you'll experience Denali National Park as few visitors get to. Set deep in the heart of the park, this unique wilderness retreat offers unparalleled views of Mt. Denali, a wide range of outdoor activities and nightly presentations that emphasize Denali's natural and cultural history, locally-sourced cuisine and special access to the park. The North Face Lodge's relationship with the park ensures exclusive opportunities for you to explore Denali's most pristine backcountry areas for prime hiking and wildlife viewing. Additionally, the small group size of 11 guests per every naturalist enhances the intimacy of outings and opportunities for in-depth learning.

### EXPEDITION HIGHLIGHTS

- ▶ Stay at a unique wilderness retreat with breathtaking views of Mt. Denali.
- ▶ Enjoy special access to prime hiking and wildlife viewing areas in pristine wilderness.
- ▶ Travel first class aboard the Alaska Railroad.

*Grizzly Bear on the autumn colored tundra, Denali National Park.*





**DAY 1: FAIRBANKS, ALASKA**

Arrive in Fairbanks, transfer to your hotel and settle into your river view cabin at Pike’s Waterfront Lodge. This evening meet your leader and traveling companions at a welcome dinner. (D)

**DAY 2: FAIRBANKS/DENALI NATIONAL PARK/NORTH FACE LODGE**

In the morning visit the University of Alaska Fairbanks Museum, featuring collections that represent over 11,000 years of cultural traditions in the North. In the late morning we depart on a wildlife drive to our temporary home located within the heart of the park, the North Face Lodge. We’ll travel in the lodge’s private buses, on the otherwise highly restricted Denali Park Road, in order to access prime wildlife viewing areas; a privilege extended to the owners of North Face Lodge and their guests. The seven-hour,



*Discover Alaska’s wild interior.*

90-mile drive is rife with opportunities to search for Denali’s famed wildlife: grizzlies, caribou, moose, Dall sheep, wolves, eagles, arctic terns, and more. We’ll enjoy a hearty, picnic-style dinner, served at the midpoint of the drive alongside the East Fork River. Regular stops at National Park Service facilities provide additional chances to stretch your legs. (B,L,D)

**DAY 3-5: DENALI NATIONAL PARK/NORTH FACE LODGE**

Immerse yourself in the remote wildness and north-country charm of the North Face Lodge, and become one with nature. See Denali’s rich wildlife, flora and fauna firsthand and learn about its natural history during the daily activities of your choice—hiking, canoeing, fishing, and biking. Hiking is among guests’ favorite activities, as the lodge offers exclusive opportunities

to hike with trained naturalist guides in the protected wilderness backcountry of Denali National Park. Optional flightseeing offers breathtaking aerial views of Alaska and is available at an additional cost. Days wind down with nightly presentations by the fireplace that focus on various aspects of Denali’s natural and cultural history, including birds, mammals, wildflowers, tundra ecology, geology, mountaineering, land use, and natural resource issues. Rest well in lovely, comfortable rooms, and enjoy delicious meals featuring fresh baked goods and locally-grown produce throughout your stay. (B,L,D)

**DAY 6: DENALI NATIONAL PARK/ ANCHORAGE**

This morning we check out of the North Face Lodge and enjoy the scenic drive back out to the park entrance. Continue to experience the grandeur of Alaska aboard the Alaska Railroad, enjoying the first class, GoldStar Service en route to Anchorage. Lavishly appointed cars feature custom-designed interiors highlighted with original Alaska art and a private outdoor viewing deck. Dinner will be served on board the train. Overnight at the Anchorage Hilton Hotel. (B,L,D)

**DAY 7: ANCHORAGE/SITKA OR JUNEAU/HOME**

This morning fly to either Sitka or Juneau to begin your Alaska voyage. Or, if your extension is taken after your voyage, transfer to the airport for connecting flights home. (B)



**EXPEDITION DETAILS**

This seven-day extension can be taken before or after select **Exploring Alaska’s Coastal Wilderness** and **A Remarkable Journey to Alaska, British Columbia & Haida Gwaii** departures between June 5 and September 4, 2016.



*Dall sheep.*

Notes: Payment and Cancellation terms for Denali are different from our standard terms. Please see page 29 or visit our website for details.

Depending on your departure date, you may be responsible for one night on your own before or after joining the Denali extension. Please call for details.



*Mighty Mt. Denali rises out of Denali National Park.*





## NATIONAL GEOGRAPHIC SEA BIRD & SEA LION

**CAPACITY:** 62 guests in 31 outside cabins.

**REGISTRY:** United States.

**OVERALL LENGTH:** 152 feet.

**PUBLIC AREAS:** Our ships feature a library; global market; lounge with full-service bar and facilities for films, slide shows and presentations; observation deck; partially covered sundeck with chairs and tables, and LEXspa. Our “open bridge” provides guests an opportunity to meet our officers and captain and learn about navigation.

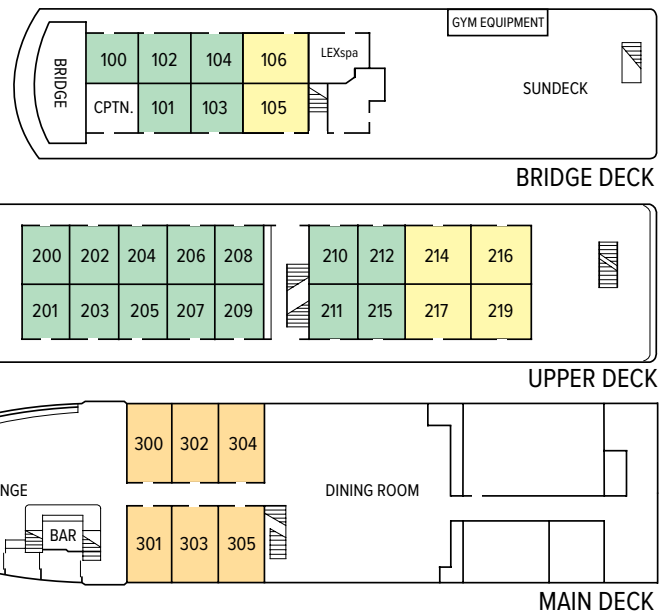
**MEALS:** Served in single seatings with unassigned tables for an informal atmosphere and easy mingling. Breakfast is a wide selection buffet and lunch is often served family style. Menu emphasizes local fare.

**CABINS:** All face outside with windows, private facilities and climate controls.

**EXPEDITION EQUIPMENT:** Bow camera, hydrophone, kayaks, Splash-Cam, underwater video camera, video microscope, and expedition landing craft.

**SPECIAL FEATURES:** Guest Internet access. A video chronicler and undersea specialist are on board all voyages.

**WELLNESS:** The vessel is staffed by a wellness specialist and features exercise equipment, LEXspa and outdoor stretching area.



### THE PRIVILEGE OF WILDNESS IN COMFORT AND STYLE

Our twin ships have been transformed: the lounge, bar and dining room have been handsomely renovated. And every cabin category has been refreshed with warm cherry veneer, our signature bed linens, sleekly framed photos and more. Now, each ship sets new standards for expedition hospitality and comfort.





**CATEGORY 1:** Main Deck #300-305 — Conveniently positioned between the dining room & lounge, these cabins feature two single lower beds, and a large view window.

**CATEGORY 2:** Bridge Deck #100-104; Upper Deck #200-212, 215 — These well-located cabins include two lower single beds & a view window.

**CATEGORY 3:** Bridge Deck #105, 106; Upper Deck #214, 216, 217, 219 — These cabins feature a seating unit with table and two large view windows. Upper Deck cabins include two lower single beds which can convert to a double bed and a pull-out single bed for a third person; Bridge Deck cabins include two lower single beds only.

**Note:** Sole Occupancy cabins are available in Categories 1 and 2 only. Third person rates are available in certain categories at one half the double occupancy rate.

**Shared Accommodations:** Shares can be arranged at the double occupancy rate in Categories 1 and 2 only.

*Photos (clockwise): Expedition ship National Geographic Sea Bird can access hard to reach locations; twin beds can be pushed together to form a double bed in Category 3 cabins on the Upper Deck; enjoy drinks in the newly restyled lounge; a comfortable Category 2 cabin freshly redesigned.*

Prices are per person, double occupancy unless indicated as solo.

ITINERARY	YEAR	CAT. 1	CAT. 2	CAT. 3	CAT. 1 SOLO	CAT. 2 SOLO	ADVANCE PAYMENT	NOTE
Exploring Alaska's Coastal Wilderness – Page 20	2016	\$6,490	\$7,490	\$8,590	\$9,740	\$11,240	\$750	Sample Airfares: Seattle/Juneau/Sitka/Seattle or vice versa: Economy from \$500; Business Class from \$1,100.
A Remarkable Journey to Alaska, British Columbia & Haida Gwaii – Page 22	2016	\$10,900	\$12,450	\$14,520	\$16,350	\$18,680	\$1500	Sample Airfares: Seattle/Sitka: Economy from \$200; Business Class from \$650.



# TAKE ADVANTAGE OF OUR SPECIAL OFFERS

## FREE AIRFARE:

Book by March 31, 2016 and receive complimentary airfare on select 2016 departures.

**TRAVELING AS A GROUP:** Save 5% when traveling as a group of 8 or more people. Take advantage of these great savings, while enjoying traveling with your friends and family. This savings is applicable on voyage fares only, and not on extensions or airfare. Deposit, final payment, and cancellation policies for group travel vary from our regular policies.



National Geographic Sea Lion bow at night in Chatham Strait.

## INCLUSIVE PRICING

We include just about everything you have the opportunity to do as part of your expedition aboard ship and ashore. The only things not included are those of a personal nature—internet usage, wellness treatments and other specialized arrangements.

### ABOARD SHIP

- ✓ All meals and nonalcoholic beverages
- ✓ 24-hour coffee, tea & soda on demand
- ✓ Hors d'oeuvres & snacks during nightly Recap
- ✓ Environmentally-friendly refillable water bottle
- ✓ Morning stretch classes with wellness specialist
- ✓ Fitness equipment
- ✓ Access to reference books and board games in the library
- ✓ The guidance and company of our expedition staff

### ASHORE

- ✓ Special access permits, park fees, port taxes
- ✓ Transfers to and from group flights
- ✓ The expertise of our expedition staff

### ACTIVITIES

- ✓ Expedition landing craft explorations
- ✓ Kayaking
- ✓ Presentations & photo instruction, including a special Alaska Whale Foundation presentation



## LOG ON TO EXPEDITIONS.COM

Find everything you need to dream, research or plan travel to 40+ destinations worldwide.

### Be part of our expedition community Join in! Here's how:

- ▶ Check out Expeditions Snapshots from guests - and upload your own on the expeditions.com homepage
- ▶ Check our daily blog: [expeditions.com/blog](http://expeditions.com/blog)
- ▶ Like us on Facebook: get inspired and chime in: [facebook.com/LindbladExpeditions](https://facebook.com/LindbladExpeditions)
- ▶ Subscribe to our videos on [youtube.com/lindbladexpeditions](https://youtube.com/lindbladexpeditions)
- ▶ Follow @LindbladEXP on Instagram and Twitter, and find Sven Lindblad on Instagram at @solindblad.





## RESERVATION INFORMATION

**Costs Include:** All accommodations aboard ships or in hotels per itinerary or similar, all meals and nonalcoholic beverages aboard ship, meals on land as indicated, air transportation where indicated as included, shore excursions, sightseeing and entrance fees, use of kayaks (where available), special access permits, transfers to and from group flights, tips (except to ship's crew), taxes and service charges, and services of our expedition staff.

**Not Included:** Air transportation (except where shown as included), extensions, passport, visa, immigration fees, meals not indicated, travel protection plan, items of a personal nature such as alcoholic beverages, e-mail, voyage DVD, laundry. Gratuities to ship's crew are at your discretion.

**Airfare:** For all programs, airfare is an additional cost unless otherwise indicated. Sample airfares are subject to change. We will gladly assist in making your air arrangements for a \$50 per person service fee.

**Complimentary Airfare:** On voyages with complimentary air offers, complimentary airfare is subject to availability at the time of booking, and is based on economy group flights that must be ticketed by Lindblad Expeditions. In the event complimentary flights are unavailable at time of booking, we reserve the right to issue an air credit. These offers are valid for new bookings only, and may not be combined with other offers.

### TERMS & CONDITIONS

**Reservations:** To reserve your place, an advance payment is required at the time of reservation. The per person advance payment amount varies by program, and is outlined in our brochures, as well as on our website. Payment is accepted by Visa, MasterCard, American Express, Discover, or by check. Receipt of your initial payment indicates your acceptance of our complete Terms and Conditions. We require written notice at the time of reservation for any physical condition, diet, or treatment requiring special attention. Once your reservation is confirmed, we urge you to use your personalized online account for important information to help you prepare for your voyage. Managing your documents online will facilitate fast and accurate communication, and allow you to provide us with pertinent details we require, in order to complete your reservation. Your online account gives you access to your Expedition Guide, which includes valuable information specific to your voyage. You can also use your online account to make easy payments, view recommended flights and reading material, packing list, and so much more.

**Final Payment:** Final payment is due 90 days prior to departures.

**Travel Protection Plan:** We strongly recommend that you take advantage of our Travel Protection Plan. This plan offers comprehensive coverage to protect you from cancellation fees, costs incurred due to trip delays/interruption, and damaged or lost baggage, and provides medical assistance and evacuation during your travels. Our Travel Protection Plan is available for U.S. and Canadian residents only, and may be purchased any time prior to final payment due date. Travel Protection premiums are non-refundable once plan is purchased.

**Smoking Policy:** Smoking is allowed only in designated outdoor areas.

**Responsibility and Other Terms & Conditions:** Among other things, limitations of Lindblad Expeditions' and the National Geographic Society's liability for loss of property, injury, illness or death during the voyage will be provided to all guests on the ship's ticket sent prior to departure, and are also available on our website

at [www.expeditions.com/terms](http://www.expeditions.com/terms), or upon request. By registering for a trip, the guest agrees to all such terms and conditions.

**Note:** Itineraries and prices listed in this brochure are as of publication date, and are subject to change. The company reserves the right to impose surcharges based on increases in the company's actual cost of fuel or other unexpected expenses.

CANCELLATION POLICY	
Number of Days Prior to Expedition Start	Per Person Cancellation Fee
120 or more days	\$350
119–90 days	Advance payment cost
89–60 days	25% of total fare
59–45 days	50% of total fare
44–0 days	No refund

\$350 will be rewarded in the form of a Lindblad Expeditions Travel Certificate. This cancellation policy applies to expeditions, extensions (with the exception of Denali), as well as all other additional services. The effective date of a cancellation will be the date on which your cancellation notice is received. Any revisions you make within the cancellation penalty period, such as departure date or choice of voyage, are subject to cancellation fees.

Note: Airline cancellation policies vary by carrier, as well as the type of fare used to issue your ticket.

Our group cancellation policy is listed in the Terms and Conditions section of our website, or you may call us for details. We stress the importance of purchasing a travel protection plan to protect yourself from fees in the event you need to cancel your reservation.

For Denali Extension	
Number of Days Prior to Expedition Start	Per Person Cancellation Fee
120 or more days	\$550
119–90 days	60% Denali cost
89–0 days	100% of Denali cost

### United States Tour Operators Association \$1 Million Travelers Assistance Program



Lindblad Expeditions, as an Active Member of USTOA, is required to post \$1 Million with USTOA to be used to reimburse, in accordance with the terms and conditions of the USTOA \$1 Million Travelers Assistance Program, the advance payments of Lindblad Expeditions customers in the unlikely event of Lindblad Expeditions bankruptcy, insolvency or cessation of business. Further, you should understand that the \$1 Million posted by Lindblad Expeditions may be sufficient to provide only a partial recovery of the advance payments received by Lindblad Expeditions. More details of the USTOA Travelers Assistance Program may be obtained by writing to USTOA at 345 Seventh Avenue, Suite 1801, New York, New York 10001, or by email to [information@ustoa.com](mailto:information@ustoa.com) or by visiting their website at [www.USTOA.com](http://www.USTOA.com).

We are proud to be a Founding Member of



Adventure Collection—a family of the world's most trusted and experienced active travel companies. Each member company of Adventure Collection is dedicated to enriching the lives of its guests and to giving back to the areas in which it travels. For more information visit [www.AdventureCollection.com](http://www.AdventureCollection.com).



## TRAVEL PLANNING WITH A DIFFERENCE

Half of travel planning is learning what you don't know and generating questions. The other half is getting answers.

When you call **1.800.EXPEDITION**, you can ask for any one of our Expedition Specialists who have been on our Alaska expeditions. They are full members of the Lindblad Expeditions team—students of the natural world and born explorers, not trained call center telemarketers.

**SO WHY NOT TAKE ADVANTAGE OF THEIR EXPERTISE?** Don't hesitate to call with your questions—they're equipped to provide answers based on their knowledge and personal experience.

Ask them about Alaska, how we explore there, our ships, our itineraries, and more. We think you'll find the conversation rewarding.

©2015 Lindblad Expeditions. Lindblad Expeditions and the Eye are the trademarks of Lindblad Expeditions. All rights reserved.

NATIONAL GEOGRAPHIC and the Yellow Border are the trademarks of the National Geographic Society. All rights reserved.

Photo Credits: Alamy, Marc Cappelletti, Ken Carlson, Jennifer Davidson, Patrick J. Endres, Alberto Montaudon Ferrer, Sharon Grainger, Mike Greenfelder, Douglas Gould, Eric Guth, John Hyde, Justin Hoffman, Ralph Lee Hopkins, Jeff Litton, Cynthia M. Manning, Jeff Mauritzen, Michael Melford, Michael S. Nolan, Gretchen Pederson, David Pickar, Rich Reid, Marco Ricca, Krista Rossow, Max Seigal, Susan Seubert, Paul Souders/WorldFoto, David Vargas

**For Reservations: Contact your travel advisor or Lindblad Expeditions**

**1.800.EXPEDITION**  
(1.800.397.3348)

**Reservation Hours:**

**Monday - Friday 9am - 8pm ET,  
Saturday & Sunday 10am - 5pm ET**  
Lindblad Expeditions, Inc.

**96 Morton Street, New York, NY 10014**

**Phone: 212.261.9000**

**Email: [explore@expeditions.com](mailto:explore@expeditions.com)**

**For additional information and online reservations, visit us on the Web:**

**[www.expeditions.com](http://www.expeditions.com).**





96 Morton Street  
New York, NY 10014

PRSR STD  
U.S. POSTAGE  
PAID  
LINDBLAD  
EXPEDITIONS

Account Number:

Expedition Code:

**1.800.EXPEDITION | WWW.EXPEDITIONS.COM**

♻️ Printed on 10% recycled content paper with soy-based inks. We recommend that you pass this along for others to enjoy or recycle.

AKC-016

**FREE AIRFARE: BOOK SELECT MAY & JUNE DEPARTURES & YOUR AIRFARE IS ON US—DETAILS INSIDE.**

### SELECTED HONORS & AWARDS

- » Condé Nast Traveler’s Readers’ Choice Award—Top Small Ship Cruise Lines, 2015, 2014
- » Porthole Cruise Magazine Readers’ Choice Awards: Best Expedition Cruise Line, 2015
- » The Tourism Cares Travel Philanthropy Awards: Legacy in Travel Philanthropy, 2015
- » World Travel Awards: World’s Leading Green Cruise Line, 2015
- » Condé Nast Traveler’s 2014 Readers’ Poll—Top 20 Small Cruise Ships in the World, 2014
- » Condé Nast Traveler World Savers “Doing it All” Award, 2013
- » Condé Nast Traveler Readers’ Choice Award—Top 25 Cruise Lines, 2013
- » Condé Nast Traveler “Gold List”, 2013, 2009, 2008, 2007, 2006, 2005
- » Virtuoso “Sustainable Tourism Leadership-Supplier” Award, 2013
- » Travel + Leisure “World’s Best” Award for Small-Ship Cruise Lines, 2013, 2012, 2011, 2010, 2009, 2008
- » Travel + Leisure “World’s Best for Families” Award for Small-Ship Cruise Lines, 2012, 2011, 2010, 2009
- » Cruise Critic Editor’s Pick Awards “Best for Adventure,” 2013, 2012, 2011, 2010
- » Climate Champion Award to Sven Lindblad by Clean Air-Cool Planet, 2009
- » Tourism for Tomorrow “Global Tourism Business Award,” 2007

▶ GO TO [WWW.EXPEDITIONS.COM/AWARDS](http://WWW.EXPEDITIONS.COM/AWARDS) FOR AN EXTENDED LIST

