

NORWAY AND THE ARCTIC



ABOARD *NATIONAL GEOGRAPHIC EXPLORER* | 2014



Lindblad
Expeditions



NATIONAL
GEOGRAPHIC™

**As astonishing as the photos in National Geographic
And an exhilarating life adventure:**

A Lindblad-National Geographic High Arctic Expedition



**Lindblad
Expeditions**



**NATIONAL
GEOGRAPHIC™**

Lindblad Expeditions and National Geographic have joined forces to further inspire the world through expedition travel. Our collaboration in exploration, research, technology and conservation will provide extraordinary travel experiences and disseminate geographic knowledge around the globe.

Standing on the foredeck as National Geographic Explorer navigates the ice—hearing the satisfying crunch—will be an unforgettable experience.

Dear Traveler,

We have been exploring Arctic Svalbard for some 30 years. It is a remarkable region on many fronts—stunning scenery with massive glaciers and ice shelves; tundra alive with wildflowers; huge aggregations of seabirds migrating for the rich feeding grounds here; and, of course, polar bears, not only numerous but relatively free of fear, as hunting was banned in 1973. So the photographs you see in this brochure depicting close encounters were all taken from the ship or from a Zodiac, often initiated by curious bears themselves.

Over the course of our years of annual exploration, we have learned much. In particular, we have focused on where to best find polar bears, and how to approach them to give you the best sightings, without causing them any discomfort.

What we have also learned is that the Arctic is changing, and changing fast. Generally speaking, the sea ice is diminishing. That is, of course, a big complicated subject but, nevertheless, it is a fact. This is, frankly, very bad news for polar bears as they depend on sea ice to hunt, and build their fat reserves for the long winter. From a traveler's perspective, however, this results in seeing more of them, as the bears are forced to concentrate in a significantly smaller territory. In fact, these past seasons we have seen a meteoric rise in our polar bear sightings.

We were also able to explore parts of the region which were never before accessible, which, of course, was inspiring for all aboard.

So, I would seriously encourage you to explore this magnificent place soon. Ideally, you will choose to do so with us. We know this place better than anyone, and can ensure you a most meaningful experience.

Best regards,



Sven-Olof Lindblad



Ice bears galore and much more, too. Arctic Svalbard offers glorious

A mere 600 miles from the North Pole, located in Norway's High Arctic, Svalbard is true wilderness, a pristine blue-white land of towering glaciers, lapidary fjords, teeming bird colonies, huddles of walrus hauled out on pebbled beaches, and reindeer grazing on tundra ablaze with wildflowers.

It is also the best place on the planet to see polar bears—wild, majestic, in their native habitat: the sea ice. And see them we do—during our season in the Arctic ice, we observe all manner of behaviors from hunting for seals amid the floes to frolicking cubs—all viewable from the proximity and safety of our ship's deck rail.

Over the past 30+ years our ace spotters have given our guests multiple opportunities to experience close sightings. In 2009 we had a seasonal record of 105 bears. In 2010, we observed a staggering total of 229 bears. And in 2011 and 2012, we saw seasonal totals of 156 and 210, respectively. But it's not the number of bear sightings that count, it's the quality, and the fact that you can count on us to deliver this extraordinary experience.

wildlife encounters.

It's one 'National Geographic moment' after another, as the clips below show you. Each is worth more than a thousand words. So, take a look and see why exploring Svalbard is so cool:



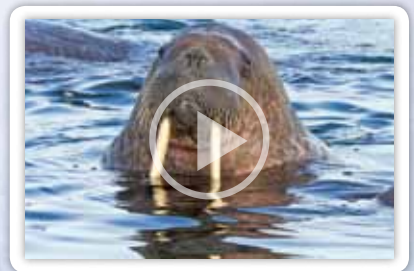
BACON?

» WWW.EXPEDITIONS.COM/CURIOUS



SOLO ACT

» WWW.EXPEDITIONS.COM/HUMPBACK



TOOTH WALKERS

» WWW.EXPEDITIONS.COM/WALRUS

Trade the steamy North American summer
for the High Arctic's cool vistas & fascinating

Arctic wildflowers.



Reindeer.



creatures.



Walrus use their long tusks to haul their enormous bodies out of frigid waters.



Waterfalls stream off the glacial ice.



This curious polar bear thrilled guests. Our Ralph Lee Hopkins captured this shot, but everyone with a camera had the chance to snap a true 'keeper.'



Kayaking provides opportunities for personal exploration.

National Geographic Explorer, your base camp for thrilling Arctic adventures

With a range of cool tools for exploring, including a fleet of Zodiacs and kayaks to get you out there on up-close, personal adventures, *National Geographic Explorer* is the perfect mobile platform for discovering all the facets of the fascinating Arctic. A range of daily activity options let you actively explore Arctic icescapes and landscapes, in the company of various interesting naturalists and guest speakers. And *Explorer's* modernist interior design, with expansive windows everywhere, plus inviting decks, keeps you connected to the Arctic's stunning vistas even when we're underway, off to new points on our adventurous itinerary.



This geography, with its mix of wilderness and civilization, has attracted singular explorers, artists and adventurous travelers for centuries. Experience it yourself—by Zodiac, kayak or on foot—and you'll gain a memory bank's worth of exceptional and original experiences.



» SEE HOW CLOSE YOU CAN GET TO NATURE ON A NIMBLE SHIP.
WWW.EXPEDITIONS.COM/COOLSHIP



Exploring by Zodiac for up-close views.

Our expedition team reveals the wonders of the Arctic geography

Our dynamic expedition team includes scientists, naturalists and a veteran expedition leader with many years of experience exploring the polar regions. With so many experts aboard, you'll benefit from a vast collection of specialized knowledge—including marine biology, zoology, botany, geology, climate change and more. In addition, our undersea specialist dives the Arctic waters with a video camera, or pilots *Explorer's* onboard ROV (Remotely Operated Vehicle) to reveal to you—in brilliant HD on the Lounge's monitors—the astonishing life forms thriving in the polar oceans.

National Geographic Explorer's ROV is pressure rated to 1,000 feet below the surface of the sea and it is deployed and operated from a Zodiac. Our undersea specialists also dive with video cameras; and show us images of the deep's denizens for playback in the lounge.





Here is a partial list of staff during our Arctic season: clockwise from top: expedition leader Bud Lehnhausen, ornithologist Richard White, marine biologist Michael Greenfelder, naturalists Carl Erik Kilander, Douglas Gualtieri, and Karen Copeland.

» FOR FULL STAFF BIOS, VISIT WWW.EXPEDITIONS.COM/EXPERTS





NATIONAL GEOGRAPHIC

National Geographic photographers on board

There is no clearer symbol of the everlasting connection between expedition and photography than the presence of a National Geographic photographer aboard every *National Geographic Explorer* voyage. Travel with these top pros and you'll pick up tips and advice in incredible field conditions. You'll share every photo op, and you might just land some cover-worthy shots yourself.

» MEET THE NATIONAL GEOGRAPHIC PHOTOGRAPHERS AT WWW.EXPEDITIONS.COM/EXPHOTO

Above: Polar bear sitting on iceberg, Svalbard.



SISSE BRIMBERG Born and raised in Copenhagen, Denmark, Sisse Brimberg has been a regular photographer for National Geographic since 1976, when a Danish grant allowed her to study photojournalism at the Society. She worked as an apprentice in a commercial photo studio while attending photography school, and later operated her own studio in Copenhagen for five years before coming to National Geographic. (*Ice Bears* – Jun. 6, 2014; *Norway's Fjords* – May 24, 2014)



COTTON COULSON Award-winning photographer Cotton Coulson began his career shooting for National Geographic at age 21. He was the Director of Photography at *The Baltimore Sun* and Associate Director of Photography at *U.S. News & World Report*. Cotton is a contributing photographer for *National Geographic Traveler*. He lives in Copenhagen with his wife and business partner, Sisse Brimberg. (*Ice Bears* – Jun. 6, 2014; *Norway's Fjords* – May 24, 2014)



SUSAN SEUBERT Award winning photographer Susan Seubert was born in Indianapolis, Indiana and is an active fine art and journalism photographer based in Portland, Oregon and Maui, Hawaii. With complete digital and film capabilities, she brings technical and creative finesse to every assignment. Her provocative imagery has earned her critical acclaim with inclusion in the Portland Art Museum's 1999 and 2001 Biennials and the 2009 Tacoma Art Museum's Northwest Biennial. (*Ice Bears* – Jun. 13 & 20, 2014)

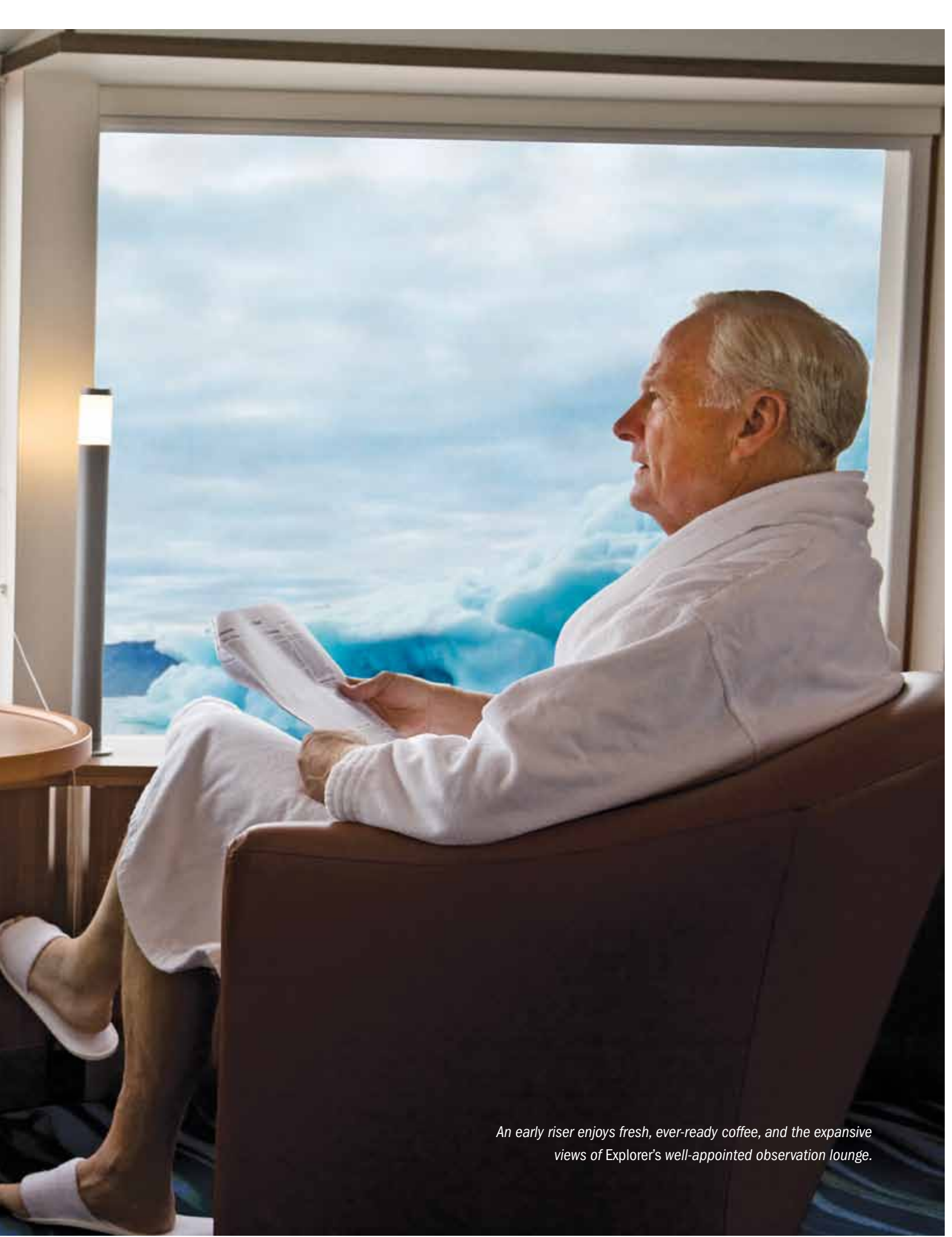


Add the luxury of comfort to the privilege of being in the wild Arctic

National Geographic Explorer is a purpose-built expedition ship, designed for maximum safety in polar waters and to perfectly enable our exclusive style of expedition travel—immersive, engaging, insightful and highly active. For many years adventurous travelers seeking to explore the Arctic had few options beyond the spartan accommodations of Russian icebreakers. Now, *Explorer's* handsomely detailed interiors, gracious hospitality, excellent food, plush linens, and relaxing wellness center bring genuine warmth and comfort to the thrill of the starkly beautiful polar landscapes.

» TAKE A VIRTUAL TOUR OF THE SHIP AT WWW.EXPEDITIONS.COM/NGEXPLORER





An early riser enjoys fresh, ever-ready coffee, and the expansive views of Explorer's well-appointed observation lounge.

LAND OF THE ICE BEARS: AN IN-DEPTH EXPLORATION OF ARCTIC SVALBARD

11 DAYS/9 NIGHTS—ABOARD NATIONAL GEOGRAPHIC EXPLORER

PRICES FROM: \$8,990 to \$16,630 (See page 22 for complete prices.)

A high Arctic archipelago situated between Norway and the North Pole, Svalbard is a place of deep fjords, snowcapped mountains, massive sheets of ice, and magnificent polar bears. Travel under the midnight sun aboard the *National Geographic Explorer*, and experience nature in its purest form.

EXPEDITION HIGHLIGHTS

- ▶ Search for the very symbol of the Arctic—the polar bear—and observe these majestic creatures in their natural habitat, on the sea ice.
- ▶ Take naturalist-led walks, and cruise among beautiful icebergs in a Zodiac or a kayak.
- ▶ Experience the legendary midnight sun: the ethereal light of the northern summer, when the sun never sets.
- ▶ Watch for huge walrus, bearded and ringed seals, arctic foxes, and reindeer.

EXPERIENCE & EXPERTISE

30+
YEARS
EXPERIENCE

Ace spotters, our veteran expedition leader and 8 naturalists are your best assurance of seeing polar bears in their native habitat, the ice. Our undersea specialist will reveal the deep, and the National Geographic photographer and Lindblad-National Geographic certified photo instructor aboard will see to it that you get your shots, while the video chronicler creates a lasting record of your voyage. Visit our website for staff bios and see the scheduled guest speakers on the facing page.

Visit our website to read staff and guest speaker bios for this expedition.



A polar bear leaps from an ice floe in Svalbard.

DAYS 1 AND 2: U.S./OSLO, NORWAY

Depart on an overnight flight to Oslo. Upon arrival, check into the Bristol Hotel (or similar). Explore this charming city, stroll among the famed Vigeland sculptures—hundreds of life-size human figures set in terraced parkland. Visit the Fram Museum, dedicated to the wooden ship sailed by Norwegian explorers Nansen and Amundsen. The evening is free to explore Oslo on your own.

DAY 3: OSLO/LONGYEARBYEN/EMBARK

Depart Oslo on a charter flight, and enjoy breathtaking vistas en route to Longyearbyen. Embark *National Geographic Explorer*, your base for the next six days. (B,L,D)

DAYS 4-9: EXPLORING SVALBARD

This voyage is undertaken in the spirit of discovery, and our travel in the archipelago is exploratory by design. In a region ruled not by humans, but by polar bears, we let nature guide our course. Svalbard lies north of the Arctic Circle, where the summer midnight sun never sets. With our fully-stabilized ice-class expedition ship, we are able to probe the ice in search of wildlife; our exact day-to-day itinerary remains flexible, depending on local ice and weather conditions. Zodiacs and kayaks take us closer to experience the region's geologic features and the wildlife that flourish during the summer months. With our National Geographic photographer

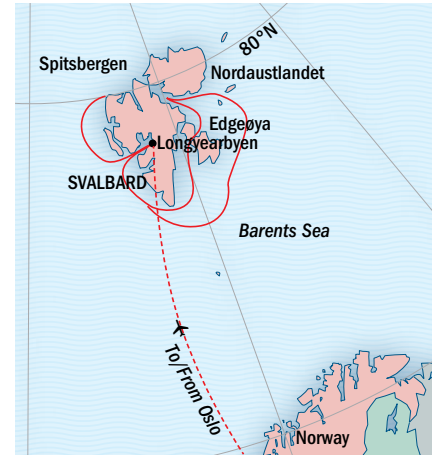
and a seasoned naturalist staff, venture to the foot of vast tidewater glaciers, kayak among sparkling icebergs, and explore fjords that split the coastline. Hike through miniature gardens blooming on the tundra; and search the edge of the pack ice for polar bears, walrus, seals, reindeer, and arctic foxes. Nowhere can the polar bear be seen more reliably in its natural environment than here. (B,L,D)



A reindeer lopes along the tundra.

DAY 10: LONGYEARBYEN/DISEMBARK/OSLO

In Longyearbyen, the largest settlement in Svalbard, disembark and enjoy time to explore. Founded by an American coal executive in 1906, this is one of the northernmost human settlements on Earth. Fly back to Oslo and overnight at the Radisson Blu Hotel. (B,L)

DAY 11: OSLO/FLY TO U.S. (B)**EXPEDITION DETAILS**

DATES: 2014 Jun. 6, 13, 20

OPTIONAL EXTENSIONS

Add a five-day pre-voyage extension to [Norway's Fjords](#), or a four-day post-voyage extension to [Iceland](#). See pages 18-19.

GLOBAL PERSPECTIVES GUEST SPEAKER

Travel with ecologist and researcher **Andrew Clarke**, who has spent all of his working life in the polar regions. (June 6 & 13, 2014)

**NATIONAL GEOGRAPHIC PHOTOGRAPHERS**

Susan Seubert, an award-winning travel and editorial photographer (Jun. 13 & 20, 2014); **Sisse Brimberg** and **Cotton Coulson** (Jun. 6, 2014).

[Learn more at expeditions.com/photo](http://expeditions.com/photo)



Guests observe walrus.



Kayakers off Svalbard's pristine coast.



Use your smartphone to watch our **Arctic Svalbard** video.

NORWAY'S FJORDS AND ARCTIC SVALBARD

17 DAYS/15 NIGHTS—ABOARD *NATIONAL GEOGRAPHIC EXPLORER*

DEPARTURE: 2014 May 24

PRICES FROM: \$13,820 to \$25,230 (See page 22 for complete prices.)

Follow Norway's fjord-carved coast past the North Cape to the icy isles of Svalbard on board the *National Geographic Explorer*. From the charming town of Bergen, enter the fjord lands, kayaking narrow inlets that slice between towering peaks, visiting fishing villages, and hiking wildflower-strewn islands. Explore Tromsø and Bear Island on the way to the Arctic archipelago of Svalbard, where polar bears prowl and walrus haul out on ice floes and rocky shores.

EXPEDITION HIGHLIGHTS

- ▶ Stroll past medieval wooden houses in Bryggen, a UNESCO site in Bergen.
- ▶ Discover hidden inlets and cascading waterfalls while kayaking in the spectacular fjord lands.
- ▶ Learn about the cultures that flourish on the Arctic's edge.
- ▶ Spot polar bears and seals on the ice floes of the Svalbard archipelago.

EXPERIENCE & EXPERTISE

30+
YEARS
EXPERIENCE

Our unparalleled expedition team is key to an in-depth experience, and our generous staff-to-guest ratio of 1:10 means more choice in activities, and more diverse personalities and interests you can gravitate to. An expedition leader, 8 naturalists/historians, a National Geographic photographer, a Lindblad-National Geographic certified photo instructor, a Global Perspectives guest speaker, undersea specialist, video chronicler and a wellness specialist all contribute to your experience of the region's wonders. Visit our website for staff and guest speaker bios.



A young girl explores in a meadow along the Norwegian coast.

MAY 24: U.S./BERGEN, NORWAY (VIA COPENHAGEN)

MAY 25: BERGEN, NORWAY/EMBARK

Arrive in the Hanseatic town of Bergen, the gateway to the fjordlands. Stroll Bryggens Wharf before embarkation. (L,D)

MAY 26: NORDFJORD

Travel through the little visited Nordfjord and transfer for a ride via coach through Olden Valley's jagged mountains and turquoise lake. Hike through deep glacially-carved valleys to Briksdal Glacier. (B,L,D)

MAY 27: SMØLA

Visit the scenic little island of Smøla where we have been specially invited by the locals to make the first-ever ship call.

MAY 28: EXPLORING THE FJORDS OF NORWAY

Explore a variety of landing possibilities among the rugged, mountainous islands and steep-walled fjords: Zodiac along vertical rock faces, paddle a kayak in a deep fjord surrounded by waterfalls, or hike with our naturalists. Over the years, we've discovered a number of special places, including Melfjord, a narrow channel surrounded by steep granite cliffs. (B,L,D)



A curious polar bear cub and its mother.

MAY 29: LOFOTEN ISLANDS

Travel among the islets by Zodiac to view Atlantic puffins, razorbills, and guillemots. Go ashore at the fishing village of Aa. Later, cruise into the dramatic Trollfjord, one of the most famous fjords in Norway. (B,L,D)

MAY 30: TYSFJORDEN

This morning, enter the long fjord of Tysfjorden, where only a few small villages cling to the rocky shores. Explore Hellemobotn and the area's numerous side channels by Zodiac, kayak or on foot. (B,L,D)



Exploring Trollfjord, Norway.

MAY 31: TROMSØ

Spend the day in the capital of northern Norway, known as the "Gateway to the Arctic." Visit the Arctic Cathedral and Polar Museum. (B,L,D)

JUNE 1: AT SEA

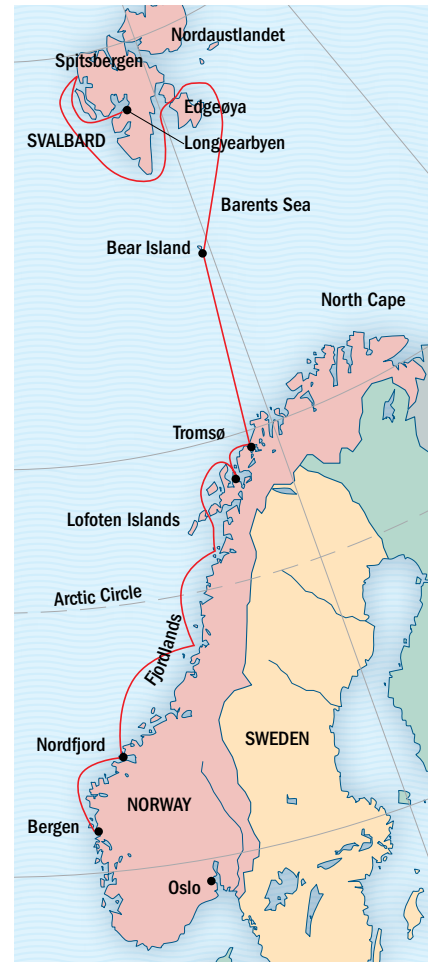
Having spent a full week in coastal Norway, we'll now set our sights toward the High Arctic, heading for Bear Island, through waters teeming with marine life. (B,L,D)

JUNE 2: BEAR ISLAND

Zodiac around mist-shrouded Bear Island, populated by thousands of fulmars, kittiwakes, guillemots and gulls. (B,L,D)

JUNE 3-7: EXPLORING SVALBARD

The focus of these days is to search for walrus, seals, reindeer, arctic foxes and polar bears living among the deep fjords, mountains, and massive ice sheets of Svalbard. Our flexible itinerary and years of experience here allow us to take the best advantage of ice and weather conditions. Shore walks, Zodiac and kayaking adventures bring us up close to rugged landscapes and passing icebergs. (B,L,D)



JUNE 8: LONGYEARBYEN/DISEMBARK/OSLO

Disembark in Longyearbyen and visit the Svalbard Art Gallery and Museum. Then, proceed to the airport for our charter flight to Oslo. Check in to the SAS Radisson Blu Airport Hotel. (B,L)

JUNE 9: OSLO/FLY TO U.S. (B)

OPTIONAL EXTENSION

» Add a four-day post-voyage extension to Iceland. See page 19 or call for details.

NATIONAL GEOGRAPHIC PHOTOGRAPHERS

Travel with Sisse Brimberg and Cotton Coulson (May 24, 2014).

[Learn more at expeditions.com/photo](http://expeditions.com/photo)



Use your smartphone to watch our **Arctic Norway** video.

OPTIONAL PRE-VOYAGE EXTENSION

THE HEART OF NORWAY'S FJORDS

5 DAYS/5 NIGHTS

2014 PRICES*: Please inquire for 2014 prices.

*To be added to the voyage cost. Airfare not included. Ask for details.

Adds 5 days/5 nights to the voyage.

The "Norwegian Fjords" extension can be taken before "Land of the Ice Bears."

The rich landscapes of southern Norway, including Sognefjord—the longest and deepest fjord in Norway—are the ideal addition to your adventures. Thundering waterfalls and snowy peaks offer wonderful photo ops.

EXPEDITION HIGHLIGHTS

- ▶ Hike, kayak and canoe along the Sognefjord, the longest and deepest fjord in Norway.
- ▶ Explore Bergen, seeing the historic Bryggen Wharf area, a UNESCO World Heritage Site.
- ▶ Take a thrilling ride on the Flam Railway through Norway's magnificent scenery.

DAY 1: U.S./FLY TO BERGEN, NORWAY (VIA COPENHAGEN)

DAY 2: BERGEN

Arrive in the lovely Hansa city of Bergen, gateway to the Norwegian fjords. The powerful Hanseatic League once ruled the seas of Northern Europe. Check in to the Radisson Blu Royal, or similar. (D)

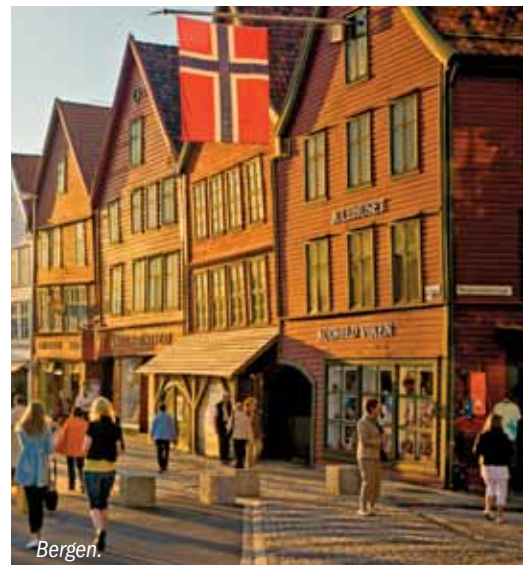
DAY 3: BERGEN

Visit the historic Bryggen Wharf and the

Hanseatic Museum. Venture into St. Mary's Church and the rebuilt Fantoft Stave Church, as well as composer Edvard Grieg's home. Ride the funicular for an extraordinary view. (B,L)

DAY 4: FLÅM RAILWAY/SOGNEFJORD/ULLENSVANG

A must-do on any exploration of the fjordlands, a thrilling ride on the Flåm Railway connects the mountain plateau of Myrdal down 2,838 feet to the town of Flåm. See some of Norway's wildest and most magnificent



scenery: rivers that cut through deep ravines, tiny hamlets and impressive waterfalls. Next we take a spectacular fjord cruise across the dramatic fjords of Naeroy and both arms of the Sognefjord. Back on land, we motor through the Naeroydal Valley via Stalheim Canyon with breathtaking views. Check into the Hotel Ullensvang for two nights. (B,L,D)

DAY 5: ULLENSVANG

Set on the shores of Sorfjord, our hotel offers a day of relaxing activities. Kayak or canoe in the fjord, hike the trails, visit the Hardanger Folkmuseum, or simply enjoy the fjord views. (B,L,D)

DAY 6: ULLENSVANG/OSLO

Today's opening act is the Tvindefoss and Voeringsfossen waterfalls and Lake Oppheim. Continue our scenic drive to Oslo, stopping en route for a visit to a well-preserved Norwegian wooden stave church, built over 800 years ago. Arrive in Oslo and check into the Bristol Hotel, or similar. (B,L)

DAY 7: OSLO

This morning is at leisure before meeting the main group. (B)

OPTIONAL POST-VOYAGE EXTENSION

ICELAND'S NATURAL WONDERS

4 DAYS/4 NIGHTS

2014 PRICES*: Please inquire for 2014 prices.

*To be added to the voyage cost. International airfare (including Oslo/Keflavik) is not included. Ask for details.

Adds 4 days/4 nights to the voyage.

The "Iceland's Natural Wonders" extension can be taken after "Land of the Ice Bears" and "Norway's Fjords and Arctic Svalbard" departures.

Once you've seen the land of ice, it only makes sense to see its counterpart: the land of fire and ice—Iceland. Explore Iceland's hot springs, bubbling mud pools, spouting geysers and massive icecaps and glaciers.

EXPEDITION HIGHLIGHTS

- ▶ Explore Iceland's glaciers, waterfalls, hot springs and boiling mud pools.
- ▶ Stroll the old town of Reykjavik, the world's northernmost capital.
- ▶ See nature and history converge at Thingvellir National Park.



Gullfoss falls.

DAY 1: OSLO, NORWAY/KEFLAVIK, ICELAND/ AKUREYRI

Fly to Iceland, arriving in Akureyri. Check in to the Kea Hotel (or similar) where dinner is served. (B,D)

DAY 2: AKUREYRI/LAKE MYVATN/AKUREYRI

The geothermal waters at Lake Mývatn are a sanctuary for bird life. The lava field is dotted with natural sculptures. Return to Akureyri. (B,L,D)



Geysir Hot Springs.

DAY 3: AKUREYRI/ REYKJAVIK

Fly to Reykjavik, capital of Iceland, and transfer to the Centrum Hotel. This afternoon, we explore the city: Alþingi Parliament House, Government House (a former prison, which was built in the 18th century), and the impressive Hallgrímskirkja Church with its 240-foot-high tower are among our stops. (B,L)

DAY 4: GOLDEN CIRCLE: GULLFOSS AND GEYSIR/REYKJAVIK

See Iceland's wild side: glacial waterfalls, rivers and hot springs. Gullfoss Falls thunders. Geysir Hot Springs steam. And at Thingvellir National Park we see nature and history converge: it's the open-air site of the ancient Parliament. (B,L,D)

DAY 5: REYKJAVIK/KEFLAVIK/U.S.

Morning is at leisure. Opt to spend your time at the famous Blue Lagoon thermal baths. All guests transfer to the Blue Lagoon for lunch, continuing to Keflavik Airport for flights home. (B,L)



Voyage in comfort aboard *National Geographic Explorer*

National Geographic Explorer provides a welcoming home in faraway lands. Decorated in relaxing earth tones, her 81 cabins, including 4 suites with balconies, 9 cabins with balconies, and 14 solo cabins are inviting and rewarding—with deluxe bedding, our signature feather duvets and thick terry robes. All cabins feature flat screen TVs with movie programming, as well as channels broadcasting the live feed from our remote-controlled crow's nest camera, and our electronic chart system. And all cabins are equipped with Ethernet connections, plugs for laptops and phone or camera chargers.

» TO VIEW A VIDEO TOUR OF NATIONAL GEOGRAPHIC EXPLORER,
VISIT WWW.EXPEDITIONS.COM/NGEXPLORER



Top left: section of suite with balcony.
Bottom left: the fitness center with panoramic views and a classic Swedish sauna make the wellness spa at the top of the ship a perfect place to end an active day. Top right: Explorer's library, brimming with definitive guides, books, novels, and gorgeously illustrated coffee table books, is a comfortable place to read or study a topic.



Left: Hotel Manager Henrik Ahlberg welcomes you. Above: the strikingly plated dishes dazzle daily, with healthy options from wholesome to indulgent.



Upper deck cabin with balcony.

NATIONAL GEOGRAPHIC EXPLORER

National Geographic Explorer is a state-of-the-art expedition ship and the newest addition to the Lindblad fleet. It is a fully stabilized, ice-class vessel, with an Ice-1A Class rating on the hull, enabling it to navigate remote polar passages while providing exceptional comfort.

Prices are per person, double occupancy unless indicated as solo.	Ice Bears 11 Days	Norway's Fjords & Svalbard 17 Days
CATEGORY 1: Main Deck with one or two Portholes #301-308	\$8,990	\$13,820
CATEGORY 2: Main Deck with Window #317-320, 335-336	\$9,590	\$14,590
CATEGORY 3: Main Deck with Window #313-316, 321-328, 337-340, 342, 344, 346, 348, 350	\$9,960	\$15,290
CATEGORY 4: Upper and Veranda Decks with Window #103-104, 107-108, 201-202, 204-207, 210, 212, 217, 226, 228	\$10,560	\$16,470
CATEGORY 5: Upper Deck with Balcony #209, 211, 214, 216, 218, 220-222, 224	\$12,470	\$18,820
CATEGORY 6: Veranda Deck-Suite #101-102; Upper Deck-Suite with Balcony #213	\$14,550	\$21,960
CATEGORY 7: Upper Deck-Suite with Balcony #215, 219, 230	\$16,630	\$25,230
CATEGORY A SOLO: Main Deck with Window #309-312, 329-334	\$11,990	\$18,240
CATEGORY B SOLO: Upper and Veranda Decks with Window #105-106, 203, 208	\$12,460	\$19,110
CATEGORY 3 TRIPLE: Main Deck with Window #341, 343	*	*

Note: *Third person rates are available in the designated triple occupancy cabins at one-half the double occupancy rate. Cabins #341, 343, 101, 102, 215, 219, and 230 can accommodate a third person.

Note: Sole occupancy cabins available in Categories A and B.

Shared accommodations: Available in Categories 1 and 2.

Note: Cabins #209, 211, 214, 216-218, 220, 222, 224, 226, 228, 303-306 – These cabins have one queen-sized bed. All other double cabins have two lower single beds; some can convert to a queen-sized bed.

Includes: two hotel nights in Oslo (*Ice Bears*); or one hotel night in Oslo (*Norway's Fjords*).

Sample airfares: Ice Bears: round-trip Newark/Oslo. Economy from: \$1,400; Business from \$3,900. Charter Airfare: \$725 (round-trip Oslo/Longyearbyen).

Sample airfares: Norway's Fjords & Arctic Svalbard: New York/Bergen, Oslo/New York: Economy from: \$1,800; Business from \$6,250. Charter airfare: \$360 Longyearbyen/Oslo).



Standard bathroom.



Spacious solo cabin.



Main deck cabin with window.

All cabins face outside with windows or portholes, private facilities and climate controls. Some cabins have balconies. Decorated in relaxing earth tones, with deluxe bedding, all cabins feature flat screen TVs with movie programming, as well as Ethernet connections and plugs for laptops or camera chargers.

CAPACITY: 148 guests in 81 outside cabins. **REGISTRY:** Bahamas

OVERALL LENGTH: 367 feet

PUBLIC AREAS: Bistro bar; restaurant; chart room; global gallery; library, lounge with full service bar and state-of-the-art facilities for videos and presentations; mud room with lockers for expedition gear, observation lounge and Internet café.

OPEN BRIDGE: Provides guests with an opportunity to meet our officers and captain and learn about navigation.

MEALS: Served in single seatings with unassigned tables for an informal atmosphere and easy mingling. Menu is international with local flair.

EXPEDITION EQUIPMENT: 13 Zodiac landing craft, 36 double kayaks, Remotely Operated Vehicle (ROV), hydrophone, SplashCam, underwater video camera, crow's nest remote controlled camera, video microscope.

WELLNESS: The vessel is staffed by a wellness specialist and features a glass-enclosed fitness center, outdoor stretching area, two LEXspa treatment rooms and a sauna.

SPECIAL FEATURES: A full-time doctor, undersea specialist, National Geographic photographer, LEX/NG-certified photo instructor and video chronicler. Laundry service available.



▶▶ TO VIEW A VIRTUAL TOUR OF NATIONAL GEOGRAPHIC EXPLORER, VISIT WWW.EXPEDITIONS.COM/NGEXPLORER



Take advantage of our special offers

CALL FOR DETAILS.

BRINGING THE KIDS: We believe sharing an expedition with your kids or grandkids is a life-enhancing experience. So take \$500 off for each child under the age of 18.

TRAVELING AS A GROUP: Save 5% when traveling as a group of 8 or more people. Take advantage of these great savings, while enjoying traveling with your friends and family. This savings is applicable to voyage fares only, and is not valid on extensions or airfare. Deposit, final payments, and cancellation policies for group travel vary from our regular policies.

COMBINING OFFERS: Certain offers may be combinable, up to two savings opportunities, except where noted otherwise. For example, travel with a group of 8 or more on back-to-back expeditions, and take advantage of both savings!

INCLUSIVE PRICING

We include just about everything you have the opportunity to do as part of your expedition aboard ship and ashore. The only things not included are those of a personal nature—alcohol, internet usage, tips to the crew, wellness treatments and other specialized arrangements.

ABOARD SHIP

- ✓ All meals and non-alcoholic beverages
- ✓ Cappuccinos, lattes & complimentary refillable water bottle
- ✓ 24-hour coffee, tea & soda on demand
- ✓ Hors d'oeuvres & snacks during lounge recap
- ✓ Sauna
- ✓ Fitness center
- ✓ Fully stocked library
- ✓ The guidance and company of our expedition staff

ASHORE

- ✓ Meals on land, as indicated in itinerary
- ✓ Special access permits, park fees, port taxes
- ✓ Transfers to and from group flights
- ✓ The expertise of our expedition staff

ACTIVITIES

- ✓ All shore activities
- ✓ Zodiac & kayak explorations
- ✓ Lectures & presentations in the lounge



EVERYTHING YOU NEED IN ONE CONVENIENT PLACE

Log on to expeditions.com to learn why traveling with us is unlike traveling with any other company.

» JOIN US ONLINE



Reservation Information

Costs Include: All accommodations aboard ships or in hotels per itinerary or similar, all meals and nonalcoholic beverages aboard ship, meals on land as indicated, air transportation where indicated as included, shore excursions, sightseeing and entrance fees, special access permits, transfers to and from group flights, use of kayaks, tips (except to ship's crew), taxes and service charges, services of a ship physician and services of our expedition staff.

Not Included: Air transportation (except where shown as included), extensions, passport, visa, immigration fees, meals not indicated, travel protection plan, items of a personal nature, such as alcoholic beverages, e-mail, voyage DVD, laundry. Gratuities to ship's crew are at your discretion.

Airfare: For all programs, airfare is an additional cost unless otherwise indicated. Sample airfares are subject to change. We will gladly assist in making your air arrangements for a \$50 per person service fee.

TERMS & CONDITIONS

Reservations: To reserve your place, an advance payment in the amount of \$1,000 per person is required at the time of reservation. The per person advance payment amount varies by program, and is outlined in our brochures, as well as on our website. Certain longer voyages may carry additional advance deposit requirements due to high demand for these voyages. Payment is accepted by Visa, MasterCard, American Express, Discover, or by check.

Receipt of your initial payment indicates your acceptance of our complete Terms and Conditions. We require written notice at the time of reservation for any physical condition, diet, or treatment requiring special attention.

Once your reservation is confirmed, we urge you to use your personalized online account for important information to help you prepare for your voyage. Managing your documents online will facilitate fast and accurate communication, and allow you to provide us with pertinent details we require, in order to complete your reservation. Your online account gives you access to your Expedition Guide, which includes valuable information specific to your voyage. You can also use your online account to make easy payments, view recommended flights and reading material, packing list, and so much more.

Final Payment: For expeditions of nine nights or more, final payment is due 90 days prior to departure. Payment schedules may vary for certain longer voyages, due to high demand for these voyages. We reserve the right to cancel your reservation if payment has not been received by final payment due date.

Travel Protection Plan: We strongly recommend that you take advantage of our Travel Protection Plan. This plan offers comprehensive coverage to protect you from cancellation fees, costs incurred due to trip delays/interruption, damaged or lost baggage, medical assistance and evacuation during your travels. Our Travel Protection Plan is available for U.S. and Canadian residents only, and may be purchased any time prior to final payment due date. Travel Protection premiums are non-refundable once plan is purchased.

Smoking Policy: Smoking is allowed only in designated outdoor areas.

Responsibility and Other Terms & Conditions: Certain other provisions concerning, among other things, limitations of Lindblad Expeditions' and the National Geographic Society's liability for loss of property, injury, illness or death during the voyage will be provided to all guests on the ship's ticket sent prior to departure, and are also available on our website at www.expeditions.com/terms, or upon request. By registering for a trip, the guest agrees to all such terms and conditions.

Note: Itineraries and prices listed in this brochure are valid as of publication date, and are subject to change. Under normal conditions, the total expedition cost is guaranteed at the time of booking. However, the published price is determined far in advance of initial departure on the basis of then-existing projections of fuel and other costs. In the event we determine that current costs create an unsustainable financial model, including but not limited to increases in the price of fuel, currency fluctuations, increases in government taxes or levies, or increased security costs, we reserve the right to pass on these costs to you, to cover such unexpected increases. We will always provide a transparent accounting of the reason for such an increase in costs.

Photo Credits: Sisse Brimberg & Cotton Coulson, Stewart Cohen, Sue Flood, Ralph Lee Hopkins, Sven-Olof Lindblad, Stefan Lundgren, Michael Luppino, Michael Melford, Michael S. Nolan, Morten Rakke, Stefan Rosengren/Alamy, Rick Smith/Grizzly Creek Films, Gerhard Zwenger-Schon/Superstock

United States Tour Operators Association \$1 Million Travelers Assistance Program



Lindblad Expeditions, as an Active Member of USTOA, is required to post \$1 Million with USTOA to be used to reimburse, in accordance with the terms and conditions of the USTOA \$1 Million Travelers Assistance Program, the advance payments of Lindblad Expeditions customers in the unlikely event of Lindblad Expeditions bankruptcy, insolvency or cessation of business. Further, you should understand that the \$1 Million posted by Lindblad Expeditions may be sufficient to provide only a partial recovery of the advance payments received by Lindblad Expeditions. More details of the USTOA Travelers Assistance Program may be obtained by writing to USTOA at 345 Seventh Avenue, Suite 1801, New York, New York 10001, or by email to information@ustoa.com or by visiting their website at www.USTOA.com.

We are proud to be a Founding Member of Adventure Collection—a family of the world's most trusted and experienced active travel companies. Each member company of Adventure Collection is dedicated to enriching the lives of its guests and to giving back to the areas in which it travels. For more information visit www.AdventureCollection.com.



CANCELLATION POLICY

For Expeditions 8 Nights or Less

Number of Days Prior to Expedition Start	Per Person Cancellation Fee
90 or more days	\$150*
89-60 days	Advance payment cost
59-30 days	50% of trip cost
29-0 days	No refund

For Expeditions 9 Nights or More

Number of Days Prior to Expedition Start	Per Person Cancellation Fee
120 or more days	\$150*
119-90 days	Advance payment cost
89-60 days	25% of trip cost
59-30 days	50% of trip cost
29-0 days	No refund

*\$150 will be refunded in the form of a Lindblad Expeditions Travel Certificate.

This cancellation policy applies to expeditions as well as pre- or post- extensions.

The effective date of a cancellation will be the date on which your cancellation notice is received. Note: Airline cancellation policies vary by carrier, as well as the type of fare used to issue your ticket. Any revisions you make within the cancellation penalty period, such as departure date or choice of voyage, are subject to cancellation fees.

Cancellation policy for certain longer voyages and holiday departures may vary due to high demand for these voyages. Our Group cancellation policies are listed in the Terms and Conditions section of our website, or you may call us for details. We stress the importance of purchasing a travel protection plan to protect yourself from fees in the event you need to cancel your reservation.

Additional Terms and Conditions may apply. For complete terms, please visit our website at www.expeditions.com/terms

©2013 Lindblad Expeditions

Lindblad Expeditions and the Eye are the trademarks of Lindblad Expeditions. All rights reserved.

NATIONAL GEOGRAPHIC and the Yellow Border are the trademarks of the National Geographic Society.

All rights reserved.

For Reservations:

Contact your travel agent or Lindblad Expeditions

1.800.EXPEDITION (1.800.397.3348)

Reservation Hours: Monday – Friday 9am – 8pm ET

Saturday & Sunday 10am – 5pm ET

Lindblad Expeditions, Inc., 96 Morton Street, New York, NY 10014

Phone: 212.261.9000 • Fax: 212.265.3770

email: explore@expeditions.com For additional information and online reservations, visit us on the Web: www.expeditions.com



96 Morton Street
New York, NY 10014

PRSRT STD
U.S. POSTAGE
PAID
LINDBLAD
EXPEDITIONS

Account Number:



Expedition Code:

2ARCFUA4

1.800.EXPEDITION | WWW.EXPEDITIONS.COM

♻️ Printed on 20% recycled content paper with soy-based inks. We recommend that you pass this along for others to enjoy or recycle.

ARC-064

Selected Honors and Awards

- » Travel + Leisure “World’s Best” Award for Small-Ship Cruise Lines, 2012, 2011, 2010, 2009, 2008
- » Travel + Leisure “World’s Best for Families” Award for Small-Ship Cruise Lines, 2012, 2011, 2010, 2009
- » Cruise Critic Editor’s Pick Awards “Best for Adventure,” 2010
- » “Best Adventure Cruise” by Forbes.com, 2009
- » Climate Champion Award to Sven Lindblad by Clean Air-Cool Planet, 2009
- » Condé Nast Traveler “Gold List”, 2013, 2009, 2008, 2007, 2006, 2005
- » Conservation Achievement Award for Corporate Achievement from National Wildlife Federation, 2008
- » Tourism for Tomorrow “Global Tourism Business Award,” 2007
- » Seafood Champion Award, 2007
- » Condé Nast Traveler “Ecotourism Award,” 2002

➔ GO TO WWW.EXPEDITIONS.COM/AWARDS FOR AN EXTENDED LIST.

