

GALÁPAGOS

NEWS!

**CELEBRATING
50 YEARS**

CHARLES DARWIN RESEARCH STATION

WITH

FREE AIR

FROM NYC OR MIAMI

**EXPEDITIONS WITH
A DIFFERENCE**

MOST IN-DEPTH EXPERIENCE

THE BEST EXPEDITION TEAM

ABOARD NATIONAL GEOGRAPHIC ENDEAVOUR | 2014-2015



Lindblad
Expeditions



NATIONAL
GEOGRAPHIC™



[EXPEDITIONS.COM/GALAPAGOS](https://www.expeditions.com/galapagos) Find a different level of content on our site.

Daily Expedition Reports (DERs) from previous expeditions for a true account of each day.

Plus, video clips, slideshows, in-depth text and FAQs.

Dear Traveler,

Galápagos is one of the few places on earth that is extremely rewarding to visit at any time of year. Choose to join us aboard *National Geographic Endeavour* this fall however—from September to December 2014—and you will be additionally rewarded.

I'd like to offer you **2 very special incentives** to join us at that time. Both benefit you directly and one benefits future generations in a very profound way.

The first incentive is to fly free. Be our guests on the flight from New York or Miami to Galápagos and back on your choice of most departures (also applies to Galápagos + Peru) from September 5 to December 12, 2014. **As to the second incentive, I have to give you some background.**

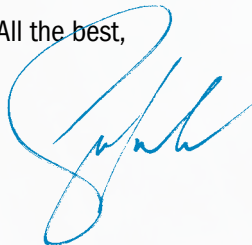
2014 is the 50th anniversary of the inauguration of the Charles Darwin Research Station. CDRS has, for these decades, provided independent research needed to address the many challenges to the unique and vulnerable biodiversity of Galápagos. CDRS's achievements in conservation and its accumulated scientific knowledge on Galápagos greatly surpass that of any other organization in the world. The collaboration between CDRS and the Ecuadorian government, for which it serves as the research arm, is a unique relationship which is vital for the protection of these remarkable islands.

Since 1997 we have, together with our guests, actively supported CDRS and other important work in Galápagos and we have funneled more than \$6 million into conservation, education and community initiatives via the Lindblad-National Geographic Fund. This is by far the largest source of conservation support from the tourism industry.

So here is the second incentive. If you join us on any remaining 2014 departure and elect to celebrate CDRS's 50th anniversary by donating to the LEX-NG Fund in the amount of \$500 per person while you are onboard, **we will pay you back with a certificate for that amount which can be applied towards any future expedition with us.** Given that most people who travel with us once do so again, this enables you to contribute to the future of Galapagos in a 'revenue neutral' way.

So, this fall is simply the best time to explore Galapagos with us. **We hope you'll take advantage of our incentives** and give yourself this incredible experience.

All the best,



Sven-Olof Lindblad

P.S. I just want to underscore the fact that our **free round-trip airfare is from New York OR Miami for your convenience.** And if getting away this fall (2014) doesn't work for you, we can provide the free airfare offer on some 2015 dates, as well. Don't hesitate to ask our expedition specialists for details: 1.800.EXPEDITION (1.800.397.3348)

“... hard to comprehend until you experience it for yourself... being eye-to-eye with waved albatross and Nazca boobies soaring along a cliff, sharing a moment with Sally Lightfoot crabs that don’t run away, encountering blue-footed boobies nesting along the trail, and Galápagos sea lions calmly lounging on a white-sand beach. Imagine being eight years old and face-to-face with a blue-footed booby? Or swimming with sea lions, penguins and marine iguanas? These are experiences that can transform lives.” —RALPH LEE HOPKINS, NATIONAL GEOGRAPHIC PHOTOGRAPHER AFTER HIS RECENT VISIT

IT'S DIFFERENT IN GALÁPAGOS

“A little world within itself,” Darwin called it, an archipelago like no other on earth, with strange, wonderful, endemic creatures. The encounters with wild animals that happen in Galápagos don’t happen anywhere else on earth, because there is simply no fear here. This is a marvelous thing to experience, this transfigured relationship with animals; it lifts human spirit. And the magic works whether you’re 8 or 80. Each island is different and diversely fascinating. Explore the different landscapes, from lunar to lush, with our dedicated expedition team. And marvel as they reveal each island’s different highlights for you, to make your expedition more engaging and more meaningful than any other form of travel.



Clockwise: Adult waved albatross, Española Island; famous giant tortoise grazing the highlands; Galápagos penguin; sea lion on South Plaza Island; brown pelican at sunset at Cerro Brujo, San Cristobal Island.

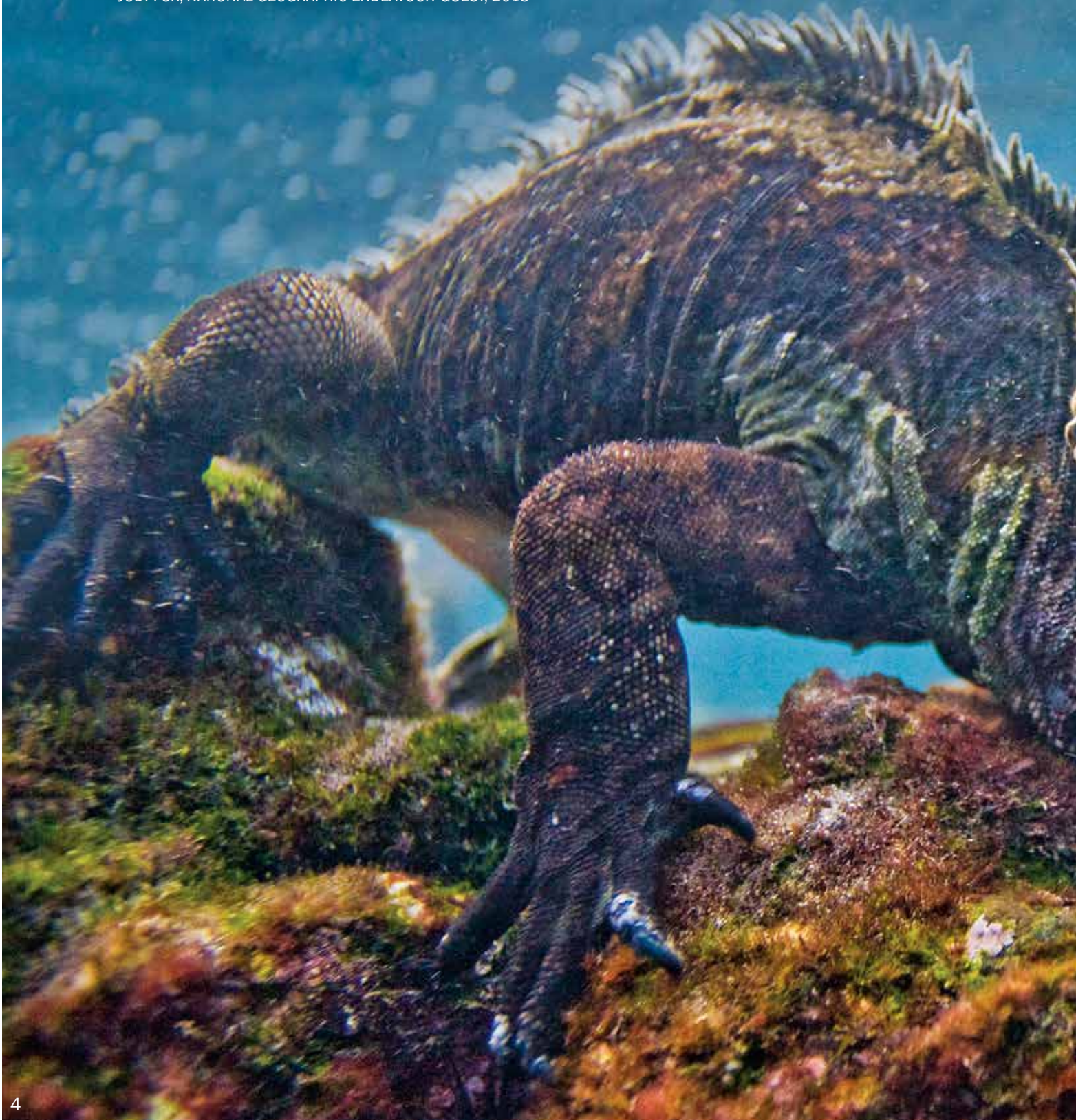
» A “MESS” OF IGUANAS & MORE [EXPEDITIONS.COM/MESS](https://www.expeditions.com/mess)





“ I have snorkeled throughout the Caribbean and Hawaii with their colorful fish. This is a much different experience. Day one we snorkeled up close and personal with sea lions and the flightless cormorant. Day two with sea turtles and penguins. Day three with schools of fish and sting rays. Day four with marine iguanas. Day five with sharks!!! ”

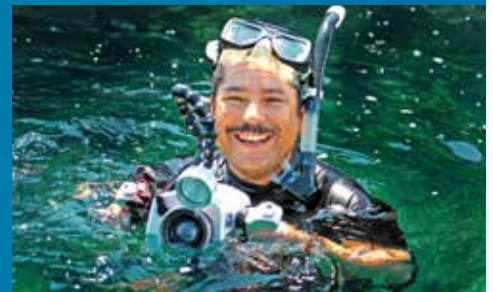
—JODI FOX, NATIONAL GEOGRAPHIC ENDEAVOUR GUEST, 2013



THE GALÁPAGOS UNDERSEA IS DIFFERENT

Snorkel throughout your expedition. Or, if certified, arrange for special scuba diving opportunities.

Prefer to relax in the lounge and see Galápagos's wonderful marine life? Easy—our ship is the only one in Galápagos with an onboard undersea specialist who dives with a video camera, so you can stay dry and see it all.



Venture even deeper—*National Geographic Endeavour* has an onboard ROV, capable of depths up to 1000 feet. It lets our guests see parts of the Galápagos Marine Reserve that few scientists or researchers have ever explored. The ROV shoots film that is shared with guests aboard both our ships. Additionally, data we collect supports scientific research projects jointly managed by the Charles Darwin Research Station and Galápagos National Park. We're thrilled to be able to contribute to the scientific understanding of this unique part of the world.



Galápagos is virtually a photo-op-a-minute. And, thanks to our exclusive partnership with renowned retailer, B&H Photo, Lindblad-National Geographic booked guests can get exclusive discounts on gear recommendations like this Canon Power Shot D20 with a floatable strap.



» PREVIEW WHAT'S POSSIBLE AT EXPEDITIONS.COM/SEA_SCENE

An up-close undersea encounter with a marine iguana.

“Galápagos is a place worthy of our respect and care. It will inspire all who come and we are committed to ensuring that our guests have the most valuable experience possible.” –SVEN LINDBLAD, FOUNDER AND GALÁPAGOS EXPLORER SINCE 1967





Guests kayaking; Sven Lindblad getting eye level with giant tortoises in the highlands.



EXPERIENCE GALÁPAGOS DIFFERENTLY

It is a privilege, a true luxury, to be in Galápagos, a world treasure that has required the efforts of a dedicated community, including our company as you'll see on the next page, to restore and protect it.

This awareness of privilege is the prime mover for our expedition team. It fills them with a contagious joy, fostering a rewarding esprit de corps among all onboard. It motivates them to share it with you—the sea, the islands, the wildlife—by providing the richest, most in-depth experience. And our staff-to-guest ratio, the most generous in the islands, and our uniquely equipped expedition ship is key to that, as you'll see on pages 24 to 27.



» HOW DOES GALÁPAGOS RATE WITH OUR GUESTS?
SEE FOR YOURSELF [EXPEDITIONS.COM/REVIEWS](https://www.expeditions.com/reviews)

CELEBRATING 50 YEARS—CHARL



Our guests visit the Charles Darwin Research Station for a behind-the-scenes look at their important work. And so far, with our guests' participation, we've raised more than \$6 million in the islands for invasive species eradication, education, and scientific initiatives. Guest contributions have also funded multi-decade studies of the health of the Galápagos Marine Reserve, shark monitoring, and much more.

Images: CDF scientists Patricia Jaramillo (left) studying a plant sample for the Datazone collections; and Henri Herrera (right) showing Invertebrate collections.

Today it is possible to walk among Galápagos giant tortoises and swim with sea lions and imagine the islands have existed this way for millennia. And so they have. But it is not by virtue of luck or inertia—it is because of the Charles Darwin Foundation and their partners, such as the Galápagos National Park and us.

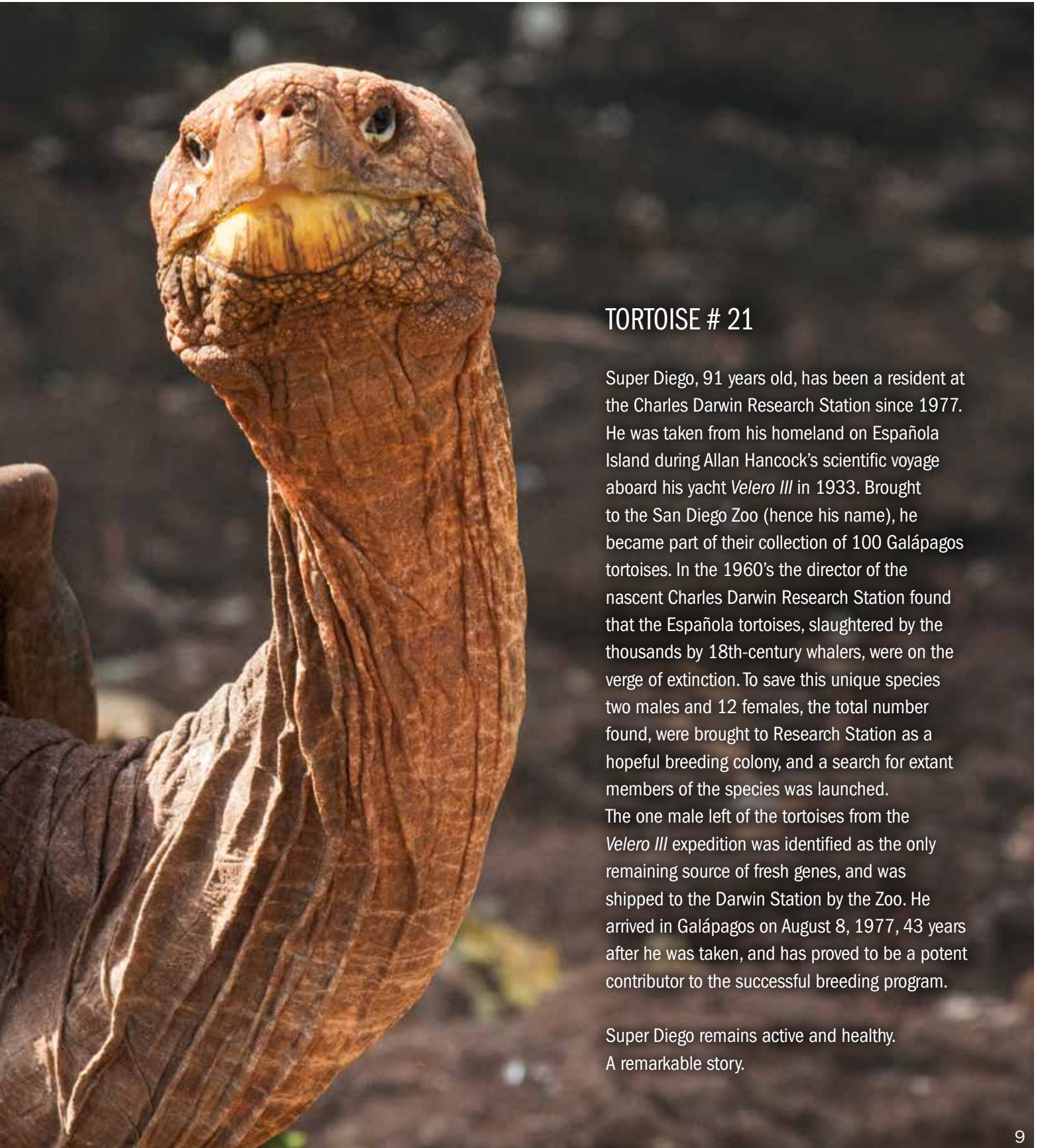
Since 1959 the Charles Darwin Foundation has acted as the scientific arm of the Ecuadorian government. And in 1964 they inaugurated the Charles Darwin Research Station at a time the concept was little understood and scarcely appreciated. Within a year they began the giant tortoise captive breeding and repatriation program, to save the giant tortoises of Española from the brink of extinction. They would go on to repatriate land iguanas, track down the last known surviving giant tortoise of Pinta Island, and create scores of programs to protect the islands and wildlife.

JOIN OUR EFFORTS TO SUPPORT GALÁPAGOS

If you explore Galápagos with us this year, and are among the many people who choose to contribute to the preservation of these islands, we will match your donation of \$500 per person with a certificate you can use on any future Lindblad Expedition.



ES DARWIN RESEARCH STATION



TORTOISE # 21

Super Diego, 91 years old, has been a resident at the Charles Darwin Research Station since 1977. He was taken from his homeland on Española Island during Allan Hancock's scientific voyage aboard his yacht *Velero III* in 1933. Brought to the San Diego Zoo (hence his name), he became part of their collection of 100 Galápagos tortoises. In the 1960's the director of the nascent Charles Darwin Research Station found that the Española tortoises, slaughtered by the thousands by 18th-century whalers, were on the verge of extinction. To save this unique species two males and 12 females, the total number found, were brought to Research Station as a hopeful breeding colony, and a search for extant members of the species was launched. The one male left of the tortoises from the *Velero III* expedition was identified as the only remaining source of fresh genes, and was shipped to the Darwin Station by the Zoo. He arrived in Galápagos on August 8, 1977, 43 years after he was taken, and has proved to be a potent contributor to the successful breeding program.

Super Diego remains active and healthy. A remarkable story.

INSPIRING THE WORLD THROUGH EXPEDITION TRAVEL

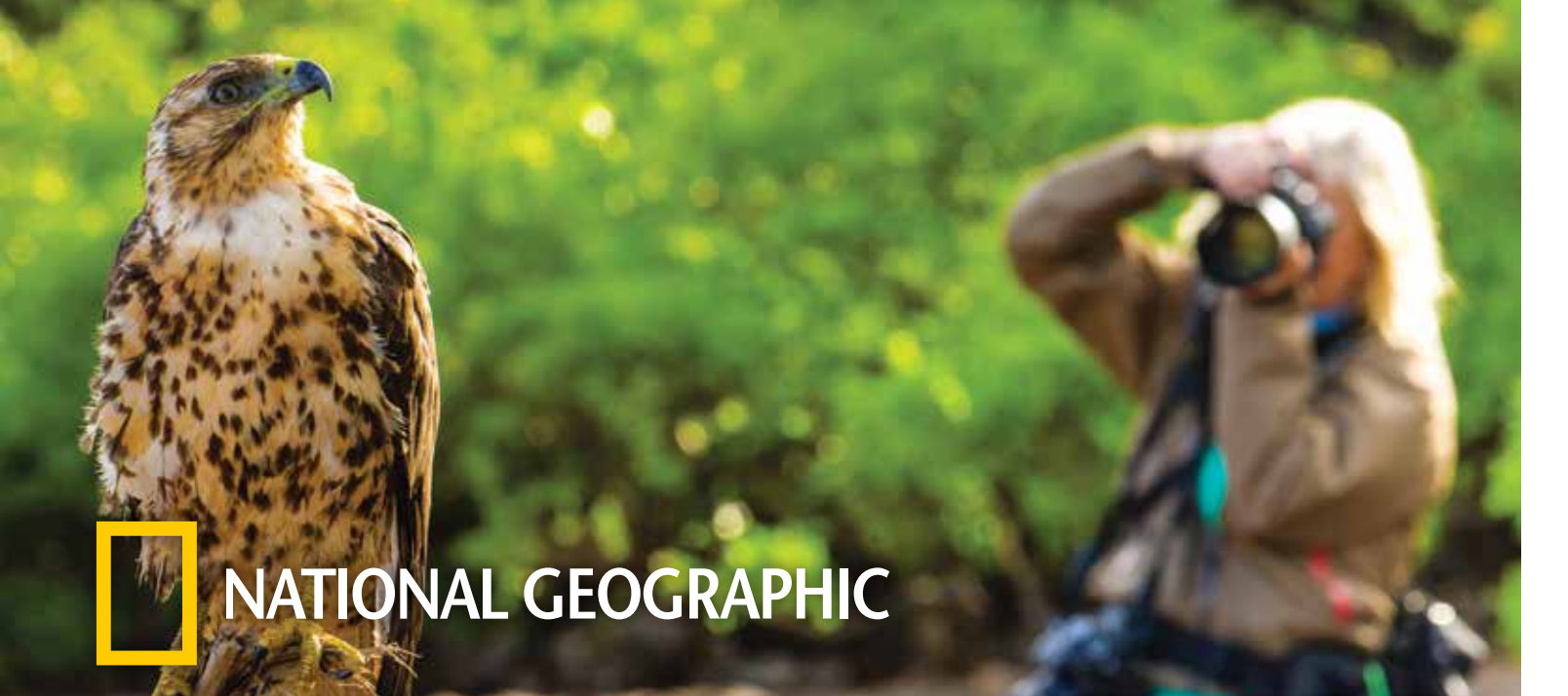
In 2004, Lindblad Expeditions and National Geographic joined forces, creating an advantage for our guests—the opportunity to explore with people whose work you’ve seen in the pages of *National Geographic* magazines, including top National Geographic photographers, like the two shown at right.

In addition, a Lindblad-National Geographic certified photo instructor accompanies every Galápagos’ departure year-round. Each photo instructor is a naturalist with a gift for photography, who has undergone special training to help you better understand your camera settings, the basics of composition, and how to capture incredible wildlife behavior. Our onboard Expedition Photography program also includes slideshows and photo-sharing presentations for all to enjoy. It’s fun and infectious—guests who never thought of themselves as photographers get caught up in the joy of “aim & create.” So whether you use a smartphone, a point & shoot, or a sophisticated DSLR, count on returning home with improved skills, confidence, and your best shots ever.



Lindblad Expeditions and National Geographic have joined forces to further inspire the world through expedition travel. Our collaboration in exploration, research, technology and conservation will provide extraordinary travel experiences and disseminate geographic knowledge around the globe.





NATIONAL GEOGRAPHIC

TRAVEL WITH NATIONAL GEOGRAPHIC PHOTOGRAPHERS

PETER ESSICK

More than 30 stories in *National Geographic* magazine carry Peter Essick's byline. He has traveled all seven continents in search of compelling pictures. Some of his favorite and most rewarding stories have been on inner Japan, the American wilderness, the carbon cycle, global warming, and global freshwater. His story on nuclear waste won first prize at World Press Photos in Amsterdam in 2002. His photographs have been in *Time* magazine's "Great Images of the 20th Century" and in *100 Best Photographs of National Geographic*. [Read more at expeditions.com/peter](http://expeditions.com/peter)

✦ Shoot with Peter on the October 24 & 31, 2014 Galápagos departures aboard *National Geographic Endeavour*.



BECKY HALE

Since 1999 Becky Hale has worked on projects for *National Geographic* magazine, *National Geographic Traveler*, *National Geographic Kids*, and National Geographic Society Mission Programs. Recent studio projects have included illustrating articles about the dwindling number of redheads being born, the treatment of maternity and paternity leave around the world, and a skull sample from an Inca gunshot victim. Fieldwork has taken her on assignment to northern Wisconsin, where she shot aerials from an ultralight for a National Geographic Television show, and to Chile, where she photographed the launch of *National Geographic Endeavour*.

[Read more at expeditions.com/becky](http://expeditions.com/becky)

✦ Shoot with Becky on the February 20 & 27, 2015 Galápagos departures aboard *National Geographic Endeavour*.



AN EXPEDITION TEAM THAT MAKES THE DIFFERENCE

All guides working in Galápagos must be Galápagos residents, and the naturalists on our staff are no exception. The difference, however, is that they are each exceptional, hand-picked for their knowledge and Lindblad Expeditions-trained to genuinely enhance your experience. And clearly they do: we've received thousands of comment cards over the course of 40+ years in the expedition business consistently expressing the same sentiment: "Outstanding expedition staff."



The healthy diversity of specialties—marine biology, evolutionary biology, ornithology, and more—and personalities on our team means you can gravitate to the naturalists whose interests and personalities most appeal to you on any given day for any given activity. You are never directed into groups or assigned. And our generous staff-to-guest ratio (12 to 1 on *National Geographic Endeavour*) means you have plenty of choices every day.



A family photographs sea lions.

» A CLIP ON DISCOVERING A NEW SPECIES IN GALÁPAGOS AT [EXPEDITIONS.COM/MASTUR](https://www.lindblad.com/expeditions.com/mastur)



“The knowledge of the staff was amazing...On our week, the kids had all taken off from school for this, but they learned so much. Most of them had to write a paper or project when they got back. Homework has never been so exciting! ”

—GUEST COMMENT CARD, NOVEMBER 2012, NATIONAL GEOGRAPHIC ENDEAVOUR



Guests enjoying a Zodiac ride with one of our many naturalists.

GALÁPAGOS IS IDEAL FOR DIFFERENT KINDS OF TRAVELERS



Nuclear families, whole clans, couples, girlfriends, solo travelers and more discover bond-affirming, life-enhancing, restorative, instructive, and downright LOL fun in Galápagos, and aboard our welcoming, inclusive ships.





OUR FAMILY EXPEDITIONS OFFER SHARED FUN, PLUS A KIDS PROGRAM:

- ✓ Photo Workshops with our Lindblad-National Geographic certified photo instructor using smart phones and/or point & shoot cameras
- ✓ Journals & journaling time, plus the opportunity to enter the Young Explorer Challenge to win a Lindblad-National Geographic Mini-Expedition (Details below)
- ✓ Zodiac-driving lessons & “certificates of achievement”
- ✓ Hands-on nature lessons with our naturalists who love to work with kids & are excellent role models
- ✓ Hands-on science programs: kids use the onboard video microscope to view and identify undersea specimens; learn about conservation efforts in unique geographies
- ✓ Plus, kid-friendly menu options, a scavenger hunt and a kids’ pizza & movie night.



KIDS WHO “GET IT” IN GALÁPAGOS CAN WIN!

Our Kids program creates engaging ways for kids to take the fun of being in Galápagos further. Now, with our **YOUNG EXPLORER CHALLENGE** they can turn the onboard journaling they’re doing anyway (photos, writing, map-drawing or artwork) into a digital contest entry—to go for the win: an all-expense paid mini-expedition aboard *National Geographic Sea Lion* from Seattle, for themselves and one parent/guardian. Nine top winners in 3 age brackets (8-10; 11-13; and 14-17) will claim the prize. And whether or not you, your child, grandchild, niece or nephew captures the prize—the whole family wins through this engaging way to make the lessons of Galápagos last!

» FIND MORE DETAILS AT [EXPEDITIONS.COM/YOUNGEXPLORERCHALLENGE](https://www.expeditions.com/youngexplorerchallenge)

GALÁPAGOS

10 DAYS/9 NIGHTS—ABOARD NATIONAL GEOGRAPHIC ENDEAVOUR

DATES: 2014 & 2015: Expeditions depart every Friday on *National Geographic Endeavour*.

PRICES FROM: \$5,490 to \$9,990 (See pages 26-27 for complete prices.)

SPECIAL OFFER: Book by September 30, 2014 and receive **FREE ROUND-TRIP AIR** from Miami or New York to Galápagos on any available September through December 2014 departures on *National Geographic Endeavour*. Plus, free air on select 2015 departures. New bookings only; subject to availability.

EXPEDITION HIGHLIGHTS

- ▶ Snorkel amid shimmering fish, sea turtles, penguins, and playful sea lions.
- ▶ Cruise to pristine islands, and walk among colonies of animals and birds unfazed by your presence.
- ▶ Observe rare giant tortoises in the wild.
- ▶ Explore the waters of the Galápagos by kayak, glass-bottom boat, or Zodiac.



"I float above a turtle for long minutes, drifting with it on the current, inches from its immense shell. We break the surface in unison, and I look it in the eye. It doesn't blink."

—Keith Bellows, "Galápagos Islands: Where the Family of Man Meets Nature,"
National Geographic Traveler, April 2006

Galápagos sea lion enjoying the sunset.

EXPERIENCE & EXPERTISE



In the nearly 50 years we've been exploring Galápagos, we've introduced generations of travelers to its magic and mystery.

We're committed to Galápagos; and have raised millions, along with our guests, for its conservation. And we're fully invested, too; the only U.S. company that owns and operates two ships, based there year round. An expedition leader, our team of naturalists, a Lindblad-National Geographic certified photo instructor, undersea specialist, wellness specialist and video chronicler all contribute to your experience of the wonders of Galápagos.

Visit our website to read staff bios for this expedition.

DAY 1: U.S./GUAYAQUIL, ECUADOR

Depart for Guayaquil and upon arrival, transfer to the Hotel Hilton Colón.

DAY 2: GUAYAQUIL/GALÁPAGOS

This morning, fly to the Galápagos Islands and board *National Geographic Endeavour*. After lunch, we begin our exploration of the islands and their diverse wildlife. (B,L,D)

DAYS 3-8: EXPLORING THE GALÁPAGOS

Listed below is a sample of the islands we may visit during our expedition.* (B,L,D Daily)

ISLA BARTOLOMÉ

Walk to the top of Bartolomé's volcanic cone for a stunning view of Pinnacle Rock and the surrounding golden sand beaches. After the hike, immerse yourself among schools of multicolored reef fish. You may also have the opportunity to swim with Galápagos penguins.

ISLA SANTIAGO

Follow a path along a series of tide pools and underwater caverns in search of Galápagos fur seals, marine iguanas, sea lions, shore birds and Sally Lightfoot crabs.

ISLA SANTA CRUZ

Santa Cruz is home to the Charles Darwin Research station; learn about the science done here and visit the neighboring captive breeding program for endangered species of Galápagos giant tortoises, by their partners in conservation, the Galápagos National Park Service. Later, travel into the highlands where wild tortoises forage to observe and photograph these tortoises in the wild.

ISLA ISABELA

Explore the largest island in the group, home to enormous marine iguanas, abundant sea turtles, the only species of flightless cormorant in the world and the only penguin species that inhabits the equator. Cruise by Zodiac and hike against the backdrop of giant shield volcanoes, and snorkel in the cool, rich waters that often draw whales and dolphins to the area.

ISLA FLOREANA

At Champion Islet, snorkel among sea lions, or peer into an underwater world in a glass-bottom boat while keeping an eye out for the endangered Floreana mockingbird. Those interested can visit Post Office Bay, founded by whalers in the 18th century—if you see a letter addressed to someone who lives near you, the tradition is to deliver it by hand.



Blue-footed boobies.

ISLA FERNANDINA

Discover the marine iguana haven of Punta Espinoza as we hike over lava flows. Galápagos hawks, sea lion nurseries and the rare Galápagos flightless cormorant will be found as we explore this island.

ISLA ESPAÑOLA

See swallow-tailed gulls, Española mockingbirds, boobies, and waved albatross on this birder's paradise. Walk among vivid green and red marine iguanas and unique lava lizards, and observe sea lions up close on a pristine white-sand beach.

DAY 9: GALÁPAGOS/GUAYAQUIL

After breakfast, disembark the ship and fly to Guayaquil. The evening is at your leisure at the Hotel Hilton Colón. (B)

DAY 10: GUAYAQUIL/U.S.

Depart Guayaquil this morning, arriving home the same day. (B)

** Please note: Itineraries vary slightly from week to week, subject to the Galápagos National Park regulations. Each itinerary will include Isla Santa Cruz and a selection of the other stops listed on these pages.*



TRAVEL PLANNING WITH A DIFFERENCE

When you call **1.800.EXPEDITION**, any Expedition Specialist who answers your call has been on our Galápagos expedition. They are full members of the Lindblad Expeditions team—students of the natural world and born explorers, not trained call center agents.

So why not take advantage of their expertise? Don't hesitate to call with your questions. They're equipped to provide answers based on their knowledge and personal experience.

Ask them about Galápagos, how we explore there, our ships, our Galápagos + Peru and Amazon itineraries, and more. We think you'll find the conversation rewarding.



You can feel confident speaking with any of our Expedition Specialists. They have all explored Galápagos aboard our ships, and can provide you with answers based on knowledge and personal experience.



Use your smartphone to watch our **Galápagos** video.



MORE ADVENTURE: ADD MACHU PICCHU

Make the most of your time in the region by combining your Galápagos expedition with our Machu Picchu & Peru's Land of the Inca for the ideal mix of nature and culture.

Machu Picchu, like Galápagos, is a life-list must. Adding Machu Picchu & Peru's Land of the Inca offers an ideal mix of history and stunning archeological sites to your wild island adventure. You'll experience colorful contemporary Lima, historic Cusco, the Sacred Valley of the Inca—and your adventure culminates with an early arrival at Machu Picchu to watch as daybreaks over the legendary mountaintop ruins.

- » PREVIEW OUR PERU EXPEDITION; SEE WHAT AWAITS YOU AT [EXPEDITIONS.COM/PERU](https://expeditions.com/peru)
- » NATIONAL GEOGRAPHIC SPONSORED HIRAM BINGHAM'S 1911 DISCOVERY OF MACHU PICCHU: SEE THE MAGAZINE STORY AT [NATIONALGEOGRAPHIC.COM/BINGHAM](https://nationalgeographic.com/bingham)

Inca ruins of Machu Picchu.



Delfin II at sunrise over the River of Mirrors.

ADD AMAZON

In the Upper Amazon, experience an entirely different kind of wildness. You'll venture to the remote, wild reaches of this flooded jungle that teem with sloths, monkeys, and the highest concentration of bird species on the planet. You'll see it up close: on rain forest hikes, while kayaking tributaries crowned with jungle canopy, and on skiff rides to hidden ponds where pink river dolphins linger in our company. Plus, meet the welcoming ribereños, natives of the reserve, and see their villages and learn about their ways of life.

» WE DELIVER AN IN-DEPTH LOOK AT THE AMAZON'S WONDERS. SEE HOW AT EXPEDITIONS.COM/AMAZON



Three-toed sloth.

GALÁPAGOS + MACHU PICCHU & PERU'S LAND OF THE INCA

16 DAYS/15 NIGHTS—ABOARD *NATIONAL GEOGRAPHIC ENDEAVOUR*

PRICES FROM: \$10,380 to \$16,280 (See pages 26-27 for complete prices.)

SPECIAL OFFER: Book by September 30, 2014 and receive **FREE ROUND-TRIP AIR** from Miami or New York to Galápagos/Lima on any available September through December 2014 departures on *National Geographic Endeavor*. Plus, free air on select 2015 departures. New bookings only; subject to availability.

As magnificent as the Galápagos Islands are for wildlife, so is Peru from a historical and archaeological perspective. Take advantage of Peru's proximity to the Galápagos and journey from the islands to Lima. Then expert guides join you for an exploration of the Sacred Valley of the Inca, the majesty of Machu Picchu and the winding colonial streets of Cusco.

EXPEDITION HIGHLIGHTS

- ▶ Walk and snorkel among the abundant and fearless wildlife of Galápagos.
- ▶ See daybreak over the ruins at Machu Picchu from the fabled Sun Gate.
- ▶ Discover Cusco's varied influences and visit the Sacred Valley of the Inca.

EXPERIENCE & EXPERTISE



This expedition has been developed with the insight and depth we've obtained from decades in the region, and the quality of our veteran

Galápagos staff extends into our Machu Picchu & Peru program. Your Peruvian expedition team will be of the same caliber as those on our ships—a team of local experts with in-depth knowledge of Peru's rich Inca heritage, unique cuisine, and distinct geography.

The Inca city of Machu Picchu.



DAYS 1-8: AS PER GALÁPAGOS ITINERARY ON PAGES 16-17.

DAY 9: GALÁPAGOS/GUAYAQUIL/LIMA, PERU

Depart Galápagos this morning and fly to Lima, Peru via Guayaquil, arriving in the evening. Overnight at the conveniently located Costa del Sol Ramada hotel. (B,L)

DAY 10: LIMA/CUSCO/SACRED VALLEY OF THE INCA

This morning fly from Lima to Cusco and drive to Awanacancha, a farm where South American llamas and alpacas are bred. Enjoy an afternoon lecture by Peter Frost. Check into the Sol y Luna Hotel. (B,L,D)

DAY 11: SACRED VALLEY OF THE INCA

Peter Frost will join us as we visit the massive Inca fortress of Ollantaytambo. Then attend a traditional weaving demonstration by National Geographic grantee Nilda Callañaupa. Enjoy an outdoor lunch with a Paso horse demonstration. Visit to a local pottery studio, featuring ceramics made with ancient Peruvian techniques and designs. After dinner, enjoy a folkloric dance performance. (B,L,D)

DAY 12: SACRED VALLEY/MACHU PICCHU

Continue from the valley to Machu Picchu for a guided visit. Overnight at the historic

31-room Orient-Express Sanctuary Lodge, set in the shadow of Machu Picchu. The lodge's grounds are home to a great variety of the region's colorful flowers and birds. (B,L,D)

DAY 13: MACHU PICCHU/CUSCO

Early morning, hike to the Sun Gate, the ancient final checkpoint to Machu Picchu, and watch daybreak over the quiet ruins. The morning is free to explore. After a train and bus ride we arrive in Cusco in the late afternoon for two nights at the Orient Express Monasterio Hotel. (B,L,D)

DAY 14: CUSCO

Explore the Inca Empire's capital city of Cusco and visit the vast Sacsayhuamán Fortress. The afternoon is open to stroll around the city. Relax, shop or visit one of the museums or convents including the magnificent 17th-century cathedral and convent of Koricancha. Dinner is on your own. This evening, experience the music of the Andes at a presentation of indigenous instruments. (B,L)

DAY 15: CUSCO/LIMA

Return to Lima and visit the Larco Herrera Museum and stroll the Plaza Mayor. Lunch is traditional Latin American style. Dinner is on your own. (B,L)

DAY 16: LIMA/U.S. (B)

EXPEDITION DETAILS

DATES: Year-round, weekly departures following Galápagos aboard *National Geographic Endeavour*.

OPTIONAL EXTENSIONS

Take advantage of your proximity—extend this **Galápagos + Machu Picchu & Peru's Land of the Inca** journey with the **Upper Amazon** expedition. See our website for details.

NATIONAL GEOGRAPHIC

NATIONAL GEOGRAPHIC EXPERT:

Spend time with National Geographic historian **Peter Frost** on our 2014 & 2015 departures.



Peruvian woman.



Cathedral at Plaza de Armas square, Cusco.

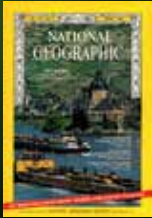
GALÁPAGOS + THE UPPER AMAZON

20 DAYS/19 NIGHTS

DEPARTURE: Combine a Galápagos expedition with Upper Amazon on a number of our 2015 departures. Please call for details.

EXPEDITION HIGHLIGHTS

- ▶ Walk and snorkel among the abundant, iconic Galápagos wildlife that is unfazed by your presence.
- ▶ Hike pristine islands, kayak their peaceful shorelines, and explore the Galápagos undersea.
- ▶ In the Amazon, discover an entirely different kind of biodiversity—macaws, monkeys, sloths & more, plus meet the ribereños—inhabitants of the jungle we explore.



"I saw my first wild, free-ranging tortoise on Santa Cruz. Amid lush uplands, they glistened like black bubbles on the green margins of rain-filled ponds."

—Roger Tory Peterson, "The Galápagos: Eerie Cradle of New Species,"
National Geographic magazine, April 1967

EXPERIENCE & EXPERTISE



We have conducted numerous Amazon expeditions in our history, and launched our first voyage aboard the beautiful, 28-guest *Delfin II* in August 2010. In order to provide expedition leadership in this pristine region, we tapped our tenured expedition leaders to lead our Amazon voyages, providing our guests with the same in-depth interpretation they find on our other expeditions. Our veteran team is highly knowledgeable about this locale, and trained to illuminate all the discoveries you'll make.

Blue & yellow macaw in flight



DAYS 1-8: PER GALÁPAGOS ITINERARY ON PAGES 16-17.

DAY 9: GALÁPAGOS /GUAYAQUIL/LIMA, PERU

Depart Galápagos this morning and fly to Lima, Peru via Guayaquil, arriving in the evening. Overnight at the conveniently located Costa del Sol Ramada hotel. (B,L)

DAY 10: LIMA/IQUITOS/NAUTA

Enjoy a morning tour of Lima, then fly to Iquitos and continue overland to the riverside village of Nauta, where the *Delfin II* awaits. Settle into your cabin, and gather for a welcome dinner of fine Peruvian cuisine on board. Tonight, step out on deck to gaze at the magnificent Amazon night sky. (B,L,D)



Curious squirrel monkey.

DAYS 11-18: PACAYA-SAMIRIA NATIONAL RESERVE

Spend this week exploring the Pacaya-Samiria National Reserve, a pristine swath of

jungle—one of the largest in South America—stretching more than five million acres, and harboring some of the Amazon’s most fascinating flora and fauna. Bordered by the Marañón and the Ucayali, two powerful rivers that converge to create the famed Amazon, the reserve floods annually with nutrient-rich waters and is known locally as the Mirrored Forest for the reflections created by its glassy water.

Set out into this remarkable wilderness on daily excursions by skiff, kayak, and, when the water level permits, hikes on terra firma. Skim past giant lily pads afloat on black-water lakes, and venture deep into the rain forest on narrow tributaries. Spot sloths and monkeys, including variably colored saddleback tamarins, noisy howlers, and shaggy-tailed monk saki monkeys. Watch for an astounding variety of birds, from tanagers and hummingbirds to parrots and endangered scarlet macaws. In the river, look for massive paiche fish, the Amazon’s largest; rare pink dolphins; and the infamous piranhas.

Enjoy an opportunity to swim in a lake in the reserve’s interior. Seek out *Victoria amazonica*, a giant water lily that grows in small lagoons. Go on a bird-watching hike, listening for the vocal oropendola and then looking for its telltale yellow tail. Watch the sun set and listen to a cacophonous symphony of nocturnal animals calling out across the treetops. Then slip through the forest



Children at the market.

in a skiff as night falls, using a spotlight to find caimans, frogs, fishing bats and other creatures of the night.

Pay a visit to one of the communities on the reserve’s edge and get to know the *riberieños*, those who live on the riverbanks, and their age-old traditions. Meet local women and children, and watch them make jewelry and other handicrafts. Learn how local subsistence farmers cultivate wild plants and trees to earn income. Hear about how the locals find edible fruits and indigenous plants with medicinal properties hidden in the jungle. (B,L,D Daily)

DAY 19: NAUTA/IQUITOS/LIMA

Enjoy one last morning excursion by skiff to view wildlife. After lunch, disembark in Nauta, and return to Iquitos overland for a late-afternoon flight to Lima. Costa Del Sol Ramada (B,L)

DAY 20: LIMA/U.S.

After breakfast, transfer to the airport for your flight home. (B)

EXPEDITION DETAILS

This Upper Amazon + Galápagos expedition can also be combined with the [Machu Picchu & Peru’s Land of the Inca](#) program. Please call for details.



Guests exploring by kayak.



NG ENDEAVOUR HERITAGE & HEART

A classic expedition ship, 96-guest *National Geographic Endeavour* has earned her credentials, and loyal fans, exploring the world—from the polar regions, to the civilized waterways of Europe and the Baltics. Her generous proportions provide many diverse, interesting spaces to spend time—a stately library for quiet, an expansive lounge for gathering and sociability, a welcoming bridge for watching the Captain and officers navigate the ship—and create a vibrant, onboard community. Her accommodating hotel staff, casual ambience and no-assigned seating attitude makes her a most gracious and inclusive “home” for your Galápagos adventure. Join daily stretch classes on deck, or enjoy the sauna, fitness center and a Wellness spa, including a floating massage pavilion for nature-inspired treatments.





Clockwise: Guests enjoy a view of Kicker Rock; the traditional Ecuadorian feast is often a guest highlight; open dining room with unassigned seating for an informal atmosphere.





CATEGORY 1: Main Deck #202, 204, A Deck #352, 353—All cabins feature two lower single beds, a writing desk and a porthole.

CATEGORY 2: Upper Deck # 122, 125; Main Deck #201, 203, 206, 208, 210-212, 214-218, 220—Cabins have two lower single beds and a writing desk. Upper Deck Cabins feature large windows & Main Deck cabins have two portholes.

CATEGORY 3: Main Deck # 209; A Deck #300, 350, 351—These spacious cabins accommodate two or three people, all with two lower beds, a sitting chair, a writing desk and two portholes. Each has a separate sleeping and sitting area.

CATEGORY 4: Upper Deck #102, 104-112, 114-116, 118, 120, 121, 123—Conveniently located cabins feature two lower single beds and a writing desk.

CATEGORY 5: Upper Deck #117, 129—The finest accommodations on board. Suites have separate sleeping and sitting areas, a large view window and a convertible sofa to accommodate a third person.

CATEGORY 1 SOLO: Main Deck # 219, 222; A Deck #309-312, 314-316, 318

CATEGORY 2 SOLO: Upper Deck #124, 126, 127; Main Deck #205

NOTE: Sole Occupancy cabins are available in Categories 1 and 2 and have one lower single bed and one porthole.

SHARED ACCOMMODATIONS: We will make arrangements for shared accommodations at the double occupancy rate in Categories 1 and 2. Third person rates are available in designated cabins at one half the double occupancy rate.

CAPACITY: 96 guests in 56 outside cabins. **OVERALL LENGTH:** 295 feet. **REGISTRY:** Ecuador.

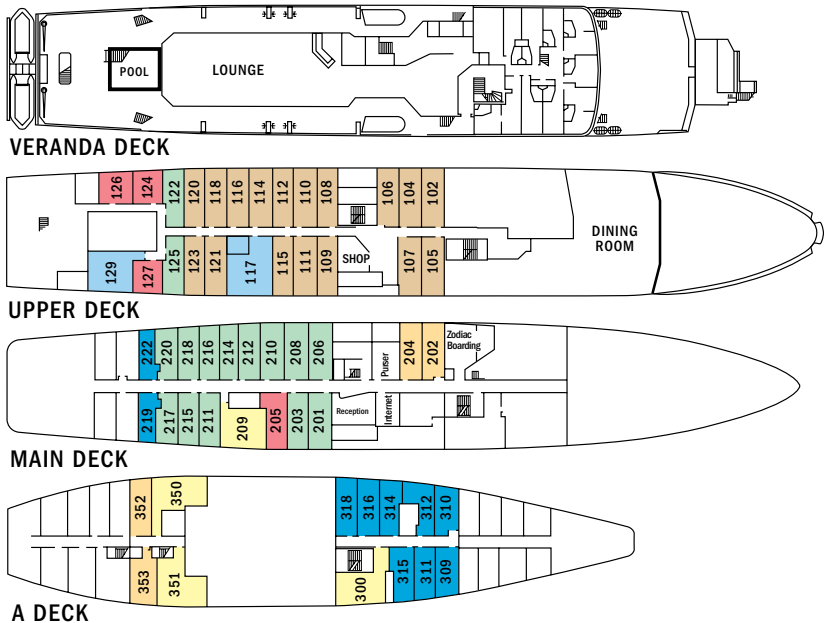
PUBLIC AREAS: Ship is fully air-conditioned. Covered deck with chairs and tables; Doctor's Office; Fitness Center; LEXspa; Global Gallery; Library; Lounge with full-service bar and facilities for films, and presentations; sauna and small swimming pool; and Sun Deck. Our Ecuadorian Captain welcomes guests to the Bridge in accordance with our "Open Bridge" policy.

MEALS: Served in single seatings with unassigned tables for an informal atmosphere. Menu is international with Ecuadorian flair.

CABINS: All cabins face outside with windows or portholes. Each has private facilities and climate controls.

EXPEDITION EQUIPMENT: Kayaks, glass-bottom boat, snorkeling gear, underwater video camera, video microscope, wet suits, and Zodiac landing craft.

SPECIAL FEATURES: Guest internet access, laundry service, floating massage platform and Wellness Program. Ship's Doctor and Video Chronicler are also on board.





Clockwise: Category 3 cabin; category 1 cabin; unwind with a book from National Geographic Endeavour's library; enjoy a dip in the swimming pool or workout in the on board fitness center.

SPECIAL OFFER: Book by September 30, 2014 and receive **FREE ROUND-TRIP AIR** from Miami or New York to Galápagos on any available September through December 2014 departures on *National Geographic Endeavour*. Plus, free air on select 2015 departures. New bookings only; subject to availability.

Prices are per person, double occupancy unless indicated as solo.

2014 GALÁPAGOS: ABOARD NATIONAL GEOGRAPHIC ENDEAVOUR	CAT. 1	CAT. 2	CAT. 3	CAT. 4	CAT. 5	CAT. 1 SOLO	CAT. 2 SOLO	ADVANCE PAYMENT	
Prime: Sep 5–Dec 12	\$5,490	\$6,390	\$6,950	\$7,490	\$9,420	\$6,860	\$7,990	\$500	International and internal Ecuador tickets must be issued separately for all Galápagos voyages. Sample International Airfares: Round-trip Miami/ Guayaquil: Economy from \$700; Business from \$1,600. Sample Internal Airfares: Guayaquil/ Galápagos: Adult from \$475 Children (Under 12) from \$240. Call for sample Peru airfare.
Peak: Jun 6–Aug 29	\$5,990	\$6,890	\$7,450	\$7,990	\$9,920	\$7,490	\$8,610	\$500	
Holiday: Dec 19, 26	\$6,590	\$7,440	\$7,990	\$8,550	\$10,480	\$8,240	\$9,300	\$500	
2014 GALÁPAGOS + MACHU PICCHU & THE LAND OF THE INCA	CAT. 1	CAT. 2	CAT. 3	CAT. 4	CAT. 5	CAT. 1 SOLO	CAT. 2 SOLO	ADVANCE PAYMENT	
Prime: Sep 5–Dec 12	\$10,380	\$11,280	\$11,840	\$12,380	\$14,310	\$12,950	\$14,080	\$800	International and internal Ecuador tickets must be issued separately for all Galápagos voyages. Sample International Airfares: round-trip Miami/ Guayaquil: Economy from \$700; Business from \$1,600. Sample Internal Airfares: Guayaquil/ Galápagos: Adult from \$475 Children (Under 12) from \$240. Call for sample Peru airfare.
Peak: Jun 6–Aug 29	\$10,880	\$11,780	\$12,340	\$12,880	\$14,810	\$13,580	\$14,700	\$800	
Holiday: Dec 19	\$11,480	\$12,330	\$12,880	\$13,440	\$15,370	\$14,330	\$15,390	\$800	
2015 GALÁPAGOS: ABOARD NATIONAL GEOGRAPHIC ENDEAVOUR	CAT. 1	CAT. 2	CAT. 3	CAT. 4	CAT. 5	CAT. 1 SOLO	CAT. 2 SOLO	ADVANCE PAYMENT	
Jan 1 - Dec 17	\$6,290	\$6,990	\$7,650	\$8,290	\$10,280	\$7,860	\$8,730	\$750	International and internal Ecuador tickets must be issued separately for all Galápagos voyages. Sample International Airfares: round-trip Miami/ Guayaquil: Economy from \$700; Business from \$1,600. Sample Internal Airfares: Guayaquil/ Galápagos: Adult from \$495 Children (Under 12) from \$250. Call for sample Peru airfare.
Holiday: Dec 18, 25	\$7,120	\$7,990	\$8,590	\$9,290	\$11,320	\$8,940	\$9,990	\$750	
2015 GALÁPAGOS + MACHU PICCHU & THE LAND OF THE INCA	CAT. 1	CAT. 2	CAT. 3	CAT. 4	CAT. 5	CAT. 1 SOLO	CAT. 2 SOLO	ADVANCE PAYMENT	
Jan 1 - Dec 17	\$11,280	\$11,980	\$12,640	\$13,280	\$15,270	\$14,150	\$15,020	\$1,000	International and internal Ecuador tickets must be issued separately for all Galápagos voyages. Sample International Airfares: round-trip Miami/ Guayaquil: Economy from \$700; Business from \$1,600. Sample Internal Airfares: Guayaquil/ Galápagos: Adult from \$495 Children (Under 12) from \$250. Call for sample Peru airfare.
Holiday: Dec 18	\$12,110	\$12,980	\$13,580	\$14,280	\$16,310	\$15,230	\$16,280	\$1,000	

TAKE ADVANTAGE OF OUR SPECIAL OFFERS

BOOK BY SEPTEMBER 30, 2014 to take advantage of the Galápagos Free Air Offer. On voyages with complimentary air offers, airfare is based on round-trip economy group flights that must be ticketed by Lindblad Expeditions. All offers are valid for new bookings only, subject to availability at the time of booking, and may not be combined with other offers and pre- and post-extensions. In the case that Lindblad's group or charter flights are no longer available at time of booking, we reserve the right to issue a credit certificate. Upgrade to business class from New York for \$900 (space available.) Call for details.

BACK-TO-BACK SAVINGS: Save 10% on any consecutive journeys taken aboard one of our expedition ships. These savings are applicable on voyage fares only, and is not valid on extensions or airfare.

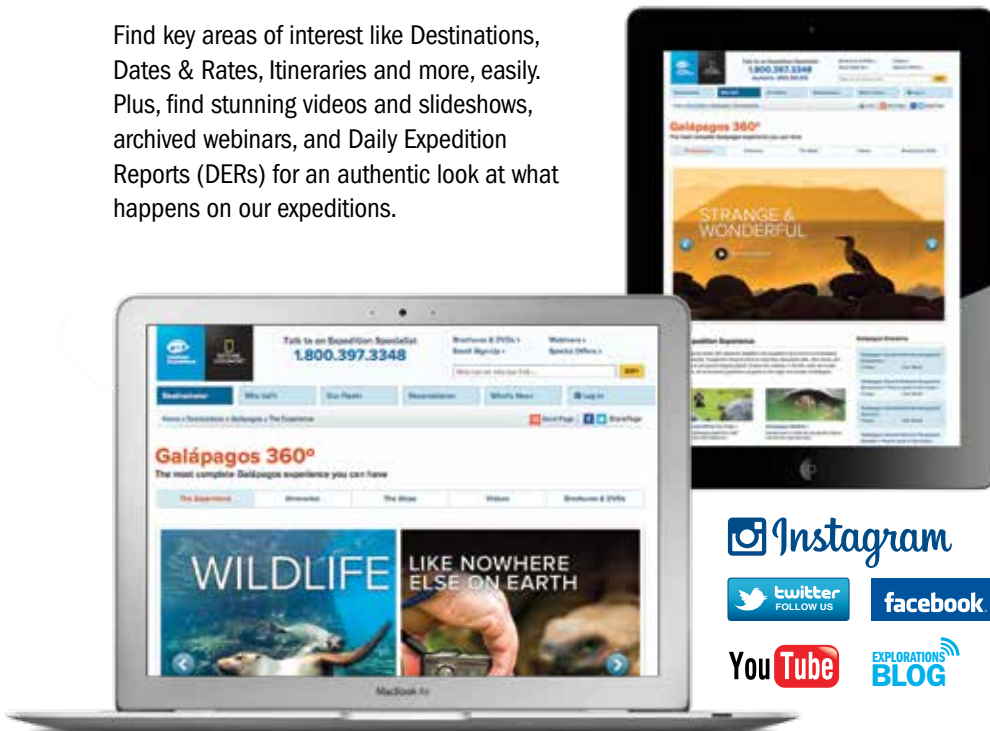
TRAVELING AS A GROUP: Save 5% when traveling as a group of 8 or more people. Take advantage of these great savings, while enjoying traveling with friends and family. This saving is applicable to voyage fares only, and is not valid on extensions or airfare. Deposit, final payments, and cancellation policies for group travel vary from our regular policies.

BRINGING THE KIDS: We believe sharing an expedition with your kids or grandkids is a life-enhancing experience. So, take \$500 off the double occupancy rate for each person under 18.

COMBINING OFFERS: Certain offers may be combinable, up to two savings opportunities except where noted otherwise. For example, travel with a group of 8 or more on back-to-back expeditions, and take advantage of both savings.

YOU'RE INVITED TO EXPLORE EXPEDITIONS.COM

Find key areas of interest like Destinations, Dates & Rates, Itineraries and more, easily. Plus, find stunning videos and slideshows, archived webinars, and Daily Expedition Reports (DERs) for an authentic look at what happens on our expeditions.



INCLUSIVE PRICING

We include just about everything you have the opportunity to do as part of your expedition aboard ship and ashore. The only things not included are those of a personal nature—alcohol, internet usage, tips to the crew, wellness treatments and other specialized arrangements.

ABOARD SHIP

- ✓ All meals and non-alcoholic beverages
- ✓ Cappuccinos, lattes & complimentary refillable water bottle
- ✓ 24-hour coffee, tea & soda on demand
- ✓ Hors d'oeuvres & snacks during lounge recap
- ✓ Sauna
- ✓ Fitness center
- ✓ Fully stocked library
- ✓ The guidance and company of our expedition staff

ASHORE

- ✓ Meals on land, as indicated in itinerary
- ✓ Special access permits, park fees, entrance fees, port taxes
- ✓ Transfers to and from group flights
- ✓ The expertise of our expedition staff

ACTIVITIES

- ✓ All excursions
- ✓ Zodiac & kayak explorations
- ✓ Lectures & presentations in the lounge

Photo Credits: Alamy, Frank Bungartz, Alexandra C. Daley-Clark, Stewart Cohen, Jennifer Davidson, Jay Dickman, Mike Greenfelder, Ralph Lee Hopkins, Sven-Olof Lindblad, Jeff Litton, Richard Maack, Jeffo Marquez, Michael S. Nolan, Ksenia Ragozina/Shutterstock, Marco Ricca, Krista Rossow, Stacy Sindlinger, Jack Swenson, David Vargas, Tim Whitby/Alamy.

RESERVATION INFORMATION

Cost Includes: All accommodations aboard ships or in hotels per itinerary or similar, all meals and nonalcoholic beverages aboard ship, meals on land as indicated, air transportation where indicated as included, shore excursions, sightseeing and entrance fees, special access permits, transfers to and from group flights, use of snorkeling equipment and wet suits, use of kayaks (where available), tips (except to ship's crew), taxes and service charges, services of a ship physician and services of our expedition staff.

Combined Itineraries Costs Include: Hotel nights as described; sightseeing; portage; services of local guides and tour leaders.

Not Included: Air transportation (except where shown as included), extensions, passport, visa, immigration fees, scuba diving (where available), meals not indicated, travel protection plan, items of personal nature, such as alcoholic beverages, e-mail, voyage DVD, laundry. Gratuities to ship's crew are at your discretion.

Airfare: For all programs, airfare is an additional cost unless otherwise noted. We will gladly assist in making your air arrangements for a \$50 per person service fee.

TERMS & CONDITIONS

Reservations: To reserve your place, an advance payment is required at the time of reservation. The advance payment amount varies by program. Payment is accepted by Visa, Mastercard, American Express, Discover or by check. Receipt of your initial payment indicates your acceptance of our complete Terms and Conditions. We require written notice at the time of reservation for any physical condition, diet, or treatment requiring special attention. Once your reservation is confirmed, we urge you to use your personalized online account for important information to help you prepare for your voyage. Managing your documents online will facilitate fast and accurate communication, and allow you to provide us with pertinent details we require, in order to complete your reservation. Your online account gives you access to your Expedition Guide, which includes valuable information specific to your voyage. You can also use your online account to make easy payments, view recommended flights and reading material, packing list, and so much more.

Final Payment: Due no later than 60 days or 90 days prior to departures, depending on the expedition.

Travel Protection Plan: We strongly recommend that you take advantage of our Travel Protection Plan. This plan offers comprehensive coverage to protect you from cancellation fees, costs incurred due to trip delays/interruption, damaged or lost baggage, medical assistance and evacuation during your travels. Our Travel Protection Plan is available for U.S. and Canadian residents only, and may be purchased any time prior to final payment due date. Travel Protection premiums are non-refundable once plan is purchased.

Smoking Policy: Allowed only in designated outdoor areas.

Responsibility and Other Terms & Conditions: Among other things, limitations of Lindblad Expeditions' and the National Geographic Society's liability for loss of property, injury, illness or death during the voyage will be provided to all guests on the ship's ticket sent prior to departure, and are also available on our website at www.expeditions.com/terms, or upon request. By registering for a trip, the guest agrees to all such terms and conditions.

©2014 Lindblad Expeditions

Lindblad Expeditions and the Eye are the trademarks of Lindblad Expeditions. All rights reserved. NATIONAL GEOGRAPHIC and the Yellow Border are the trademarks of the National Geographic Society. All rights reserved.

We are proud to be a Founding Member of Adventure Collection—a family of the world's most trusted and experienced active travel companies. Each member company of Adventure Collection is dedicated to enriching the lives of its guests and to giving back to the areas in which it travels. For more information visit www.AdventureCollection.com.

ADVENTURE
COLLECTION

United States Tour Operators Association \$1 Million Travelers Assistance Program

ACTIVE MEMBER
USTOA
United States Tour Operators Association
\$1 MILLION TRAVELERS ASSISTANCE PROGRAM

Lindblad Expeditions, as an Active Member of USTOA, is required to post \$1 Million with USTOA to be used to reimburse, in accordance with the terms and conditions of the USTOA \$1 Million Travelers Assistance Program, the advance payments of Lindblad Expeditions customers in the unlikely event of Lindblad Expeditions bankruptcy, insolvency or cessation of business. Further, you should understand that the \$1 Million posted by Lindblad Expeditions may be sufficient to provide only a partial recovery of the advance payments received by Lindblad Expeditions. More details of the USTOA Travelers Assistance Program may be obtained by writing to USTOA at 345 Seventh Avenue, Suite 1801, New York, New York 10001, or by email to information@ustoa.com or by visiting their website at www.USTOA.com.

For 2014 Expeditions 8 Nights or Fewer

Number of Days Prior to Expedition Start	Per Person Cancellation Fee
90 or more days	\$150* (will be rewarded)
89-60 days	Advance payment cost
59-30 days	50% of trip cost
29-0 days	100%—No refund

For 2014 Expeditions 9 Nights or More

Number of Days Prior to Expedition Start	Per Person Cancellation Fee
120 or more days	\$150* (will be rewarded)
119-90 days	Advance payment cost
89-60 days	25% of trip cost
59-30 days	50% of trip cost
29-0 days	100%—No refund

For 2015 Expeditions

Number of Days Prior to Expedition Start	Per Person Cancellation Fee
120 or more days	\$350* (will be rewarded)
119-90 days	Advance payment cost
89-60 days	25% of trip cost
59-45 days	50% of trip cost
44-0 days	100%—No refund

*\$150 or \$350 will be refunded in the form of a Lindblad Expeditions travel certificate. This cancellation policy applies to expeditions as well as pre and post extensions. The effective date of a cancellation will be the date on which your notice is received. Note: Airline cancellation policies vary by carrier, as well as the type of fare used to issue your ticket. Any revisions you make within the cancellation penalty period, such as departure date or choice of voyage, are subject to cancellation fees. Additional Terms and Conditions may apply. For complete terms, please visit our website at www.expeditions.com/terms.

**For Reservations:
Contact your travel agent or Lindblad Expeditions**

1.800.EXPEDITION (1.800.397.3348)

Reservation Hours: Monday – Friday 9am – 8pm ET

Saturday & Sunday 10am – 5pm ET

Lindblad Expeditions, Inc., 96 Morton Street, New York, NY 10014

Phone: 212.261.9000 · Fax: 212.265.3770

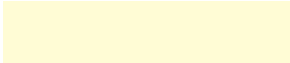
email: explore@expeditions.com For additional information and online reservations, visit us on the Web: www.expeditions.com



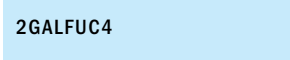
96 Morton Street
New York, NY 10014

PRSRT STD
U.S. POSTAGE
PAID
LINDBLAD
EXPEDITIONS

Account Number:



Expedition Code:



1.800.EXPEDITION | WWW.EXPEDITIONS.COM

♻️ Printed on 10% recycled content paper with soy-based inks. We recommend that you pass this along for others to enjoy or recycle.

GAL-074

SELECTED HONORS AND AWARDS

- » Condé Nast Traveler World Savers “Doing it All” Award, 2013
- » Condé Nast Traveler Readers’ Choice Award-Top 25 Cruise Lines, 2013
- » Condé Nast Traveler “gold List,” 2013, 2009, 2008, 2007, 2006, 2005
- » Virtuoso “Sustainable Tourism Leadership-Supplier” Award, 2013
- » Travel + Leisure “World’s Best” Award for Small-Ship Cruise Lines, 2013, 2012, 2011, 2010, 2009, 2008
- » Travel + Leisure “World’s Best for Families” Award for Small-Ship Cruise Lines, 2012, 2011, 2010, 2009
- » Cruise Critic Editor’s Pick Awards “Best for Adventure,” 2013, 2012, 2011, 2010
- » Climate Champion Award to Sven Lindblad by Clean Air-Cool Planet, 2009
- » Conservation Achievement Award for Corporate Achievement from National Wildlife Federation, 2008
- » Tourism for Tomorrow “Global Tourism Business” Award, 2007



» GO TO WWW.EXPEDITIONS.COM/AWARDS FOR AN EXTENDED LIST.