



# ALASKA 2018

5 REMARKABLE CHOICES  
4 IDEAL SHIPS  
1 AUTHENTIC EXPERIENCE

ABOARD NATIONAL GEOGRAPHIC SEA LION,  
SEA BIRD, QUEST & VENTURE | 2018



Lindblad  
Expeditions



NATIONAL  
GEOGRAPHIC™





Lindblad  
Expeditions



NATIONAL  
GEOGRAPHIC™

Lindblad Expeditions and National Geographic have joined forces to further inspire the world through expedition travel. Our collaboration in exploration, research, technology and conservation will provide extraordinary travel experiences and disseminate geographic knowledge around the globe.





DEAR VALUED GUEST,

You've traveled with us, and chances are, you learned something on your expedition about adaptation—about animals or plants particularly suited to their natural habitat. Well, in 2018 I invite you to experience Alaska—aboard one of our four ships, uniquely adapted to their expedition itineraries.

As you may know, we're celebrating 50 years of expedition travel to Antarctica and Galápagos. Well, for 35 of those years we've been exploring Alaska, and have learned a lot about what makes for an authentic, meaningful experience for our guests. It starts with our ships: *National Geographic Sea Lion*, *National Geographic Sea Bird* and the brand new *National Geographic Quest*. In 2018, *National Geographic Venture* will join them, increasing our ability to satisfy the demand for the unique Alaska experience we offer.

Which ship should you choose? Well, where do you want to go? Each is adapted to one or more of our five different itineraries—as you'll see ahead on pages 10 and 11, allowing you to go into parts of wild Alaska you could otherwise never see. And each offers you an onboard experience that's uniquely rewarding.

And all our ships equipped with a complete suite of exploration tools: a fleet of Zodiacs, kayaks, and paddle boards to enable you to get out there for up-close, personal explorations. Plus, hydrophones, bow cams and more to make your whale watching experiences even more remarkable.

We're renowned for our expedition teams—and based on your experience with us, you may agree. Your Alaska team will ensure that you see, do and experience more than you ever imagined possible. Any company can take you on a hike through Alaska's old growth forests, and our naturalists will, but who else can introduce you to the surprising Alaska undersea? Our team includes an undersea specialist who dives with a video camera to reveal what's beneath the ship. And a Lindblad-National Geographic certified photo instructor is at your side and at your service to help you take your best photos ever.

There is no better way to experience the last bastion of American wildness than on one of our five Alaska expeditions. Join us this season and I promise you will make memories to last a lifetime.

All the best,



Sven-Olof Lindblad



# EXPERIENCE ALASKA IN AU



*A trio of orcas surfaces next to a Zodiac in the South Passage of Icy Strait.*



# AUTHENTIC EXPEDITION STYLE

A group of people in an inflatable boat are observing a whale breaching the water. The boat is black and has a blue logo on the side. The people are wearing orange life jackets and are holding cameras. The whale is dark and is breaching the water, creating a splash. The background shows a forested coastline under a blue sky.

With 35+ years of experience exploring Alaska and a network of knowledgeable insiders, we are uniquely equipped to connect you to the region in a way you never thought possible. Our nimble, perfectly sized ships take you deeper inside where you'll discover authentic Alaska—the majestic bears, breaching humpbacks, old-growth forests, calving glaciers, indescribable vistas, and fascinating First Nation communities. Along the way our veteran naturalists will illuminate every facet of your expedition, providing expert commentary and spotting wildlife so you don't miss a thing. And since we're not tied to port times, we have the flexibility to stop and linger should we happen upon a pod of orcas circling prey—giving you a front-row seat to the powerful, often unexpected, moments only nature can provide.



# ACTIVELY EXPLORING EVERY DAY & EVERY WAY

Every day in Alaska brings new adventure and an array of active options. Start your morning with an energizing hike through a lush, towering forest, or choose a slower walk, with time for your naturalist to share the unique wonders of the native flora. Later on, approach a calving glacier by Zodiac, try your hand at stand-up paddleboarding, visit ancestral First Nation villages, or kayak along wildlife-rich shorelines keeping watch for swooping bald eagles, and gregarious sea lions. When you prefer, stay aboard to read or enjoy a wellness treatment in the spa. There's never one-size-fits-all scheduling here: choose your activities, activity levels, and staff members to join daily.



*Clockwise from top right: National Geographic Sea Bird looks on as guests head ashore to explore; hiking the lush Cascade Creek Trail in Tongass National Forest; Alaska's waters are ideal for adventurous kayakers; take in the epic scenery from a new vantage—on a stand-up paddleboard.*







# THE RICHEST WILDLIFE WATCHING EXPERIENCE POSSIBLE



Humpback whale flukes.

Drawing on 35 years of knowledge exploring the region, we know where to position our ships, in the narrow, fast-moving channels and along undersea shelves, where the humpbacks converge in the spring to feed, ensuring more encounters. Our skill in timing, paired with our nimble, perfectly sized ships, means we can navigate perfectly to be “there” when whales are—creating amazing observation and photo ops others just cannot deliver. In addition, researchers from the Alaska Whale Foundation come aboard

to share their knowledge and latest findings, and to provide insight into the humpback behavior the images here illustrate. And if the opportunity arises, our naturalists may even drop a hydrophone to reveal the whales’ communication, or give you a whale’s-eye view through exclusive footage shot by National Geographic’s Crittercam team.

*“Watching humpback whales is a life-changing experience. Lindblad Expeditions-National Geographic has contributed to the knowledge base of this unique community of these findings with travelers in the depths of the Alaskan wilderness.”*

—DR. FRED SHARPE, PRINCIPAL INVESTIGATOR, ALASKA WHALE FOUNDATION

▶ SEE WHAT IT’S LIKE AT [EXPEDITIONS.COM/WHALES](https://www.lindblad.com/expeditions.com/whales)







*Clockwise from above:  
The wealth of wildlife in Alaska  
is simply staggering; breaching  
humpback whale; a curious  
harbor seal; bald eagle in  
flight; and a brown bear fishing  
for salmon.*



An underwater photograph showing a dense forest of jellyfish with long, thin, white and yellowish tentacles drifting in the water. The water is a deep teal color. In the lower right corner, a diver is visible, illuminated by a bright light source, possibly a flashlight or a camera light, creating a strong lens flare effect. The diver's gear, including a tank and a mask, is partially visible.

# EVEN EXPLORE ALASKA'S VIVID UNDERSEA

See more of Alaska than you ever imagined. No other travel company offers this kind of look at the vivid and surprising undersea life found in Alaska. On every departure your undersea specialist will don special cold-water diving gear to explore the depths of the undersea to shoot video of the otherworldly creatures, which you'll see on TV screens from the comfort of the lounge. See the vast kelp forests swaying in the currents and discover strange and wonderful marine life: anemones, jellies, rockfish and unusual life forms that are only found well beneath the water's surface. Watch as your undersea specialist's bright lights dance across the seafloor, revealing the brilliant purples and greens.





*Left: A diver observes how the nutrient-rich water feeds the vibrant, seldom-seen undersea, including this lion's mane jellyfish. Above: A close-up of an opalescent nudibranch.*

*“We found ourselves in a forest of giant plumose anemones...among them hundreds of species of marine invertebrates—each more vibrant than the last. Hermit crabs whose shells had been fully engulfed by sponges, a rare butterfly crab, and six species of sea stars—including the largest on Earth. Sharing the images with everyone aboard brought excitement and shed light on the seldom-seen underwater world.”*

—JEFF LITTON, UNDERSEA SPECIALIST

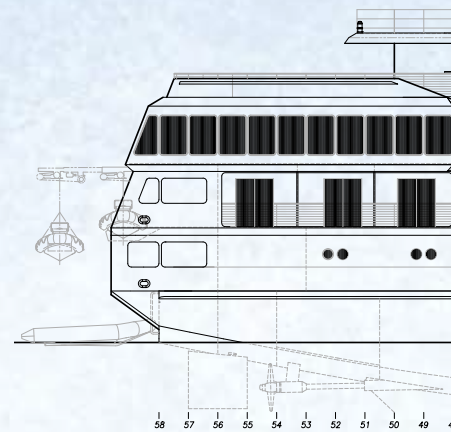


▶ WATCH A FASCINATING PACIFIC OCTOPUS ENCOUNTER AT [EXPEDITIONS.COM/OCTOPUS](https://www.expeditions.com/octopus)



# THE PERFECT PLATFORMS TO

Sister ships *National Geographic Sea Bird* and *Sea Lion*, and our new sisters, *National Geographic Quest* and *Venture*, are all purpose-built to optimize exploring in Alaska—with expansive decks ideal for wildlife-watching, generous windows that bring jaw-dropping scenery in, and a fleet of Zodiacs, kayaks and paddleboards that ensure up-close, personal explorations for all aboard—including families who find expeditions perfect for pleasing all members. Three ships share one classic Alaska itinerary, and otherwise explore the geographic areas they're best adapted for. Choose your itinerary, and your ship will be ideal for it.



## NATIONAL GEOGRAPHIC SEA BIRD & SEA LION

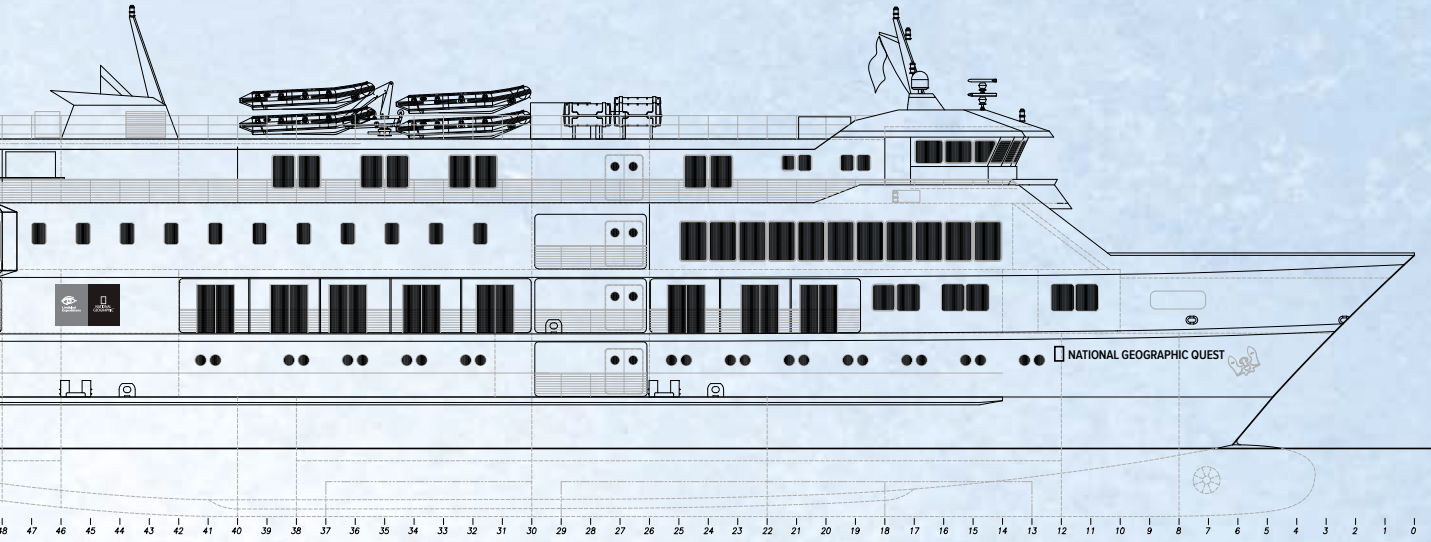
Explore on our 62-guest sister ships and you'll experience Alaska's remoteness and wildness in a way you otherwise couldn't, thanks to their nimble size and maneuverability. Able to thread the slender inlets and swift moving channels, they take you deep inside the remote stretches of Alaska, and have been integral to our quintessential **Exploring Alaska's Coastal Wilderness** expedition (pgs 26-29). *National Geographic Sea Bird* and *Sea Lion* are the only U.S. vessels permitted to visit ancestral lands of **Haida Gwaii** in over 20 years, giving our guests privileged access to an incredible culture (pgs 32-35). And they're key to the energy and fun of our **Wild Alaska Escape** (pgs 30-31), and photographers' ability to get their shots on **Big Picture Alaska** (pgs 36-37). Both ships foster a life aboard where everyone is integral to the adventure, and a unique, rewarding esprit de corps is the hallmark.

*Clockwise from top: Schematic rendering of National Geographic Quest; there are plenty of photo ops to be had right from the comfort of the ship; an artist rendering of a Category 4 cabin on Quest; kayakers paddle past the National Geographic Sea Lion; a Zodiac arrives for a wet landing in Thomas Bay, Tongass National Forest.*





# EXPLORE WILD ALASKA



## NATIONAL GEOGRAPHIC QUEST & VENTURE

Our brand-new, 100-guest sister ships (*Quest* launches June 2017; *Venture*, June 2018) are similarly designed to purposefully navigate our favorite off-the-beaten paths as *National Geographic Sea Bird* and *Sea Lion*, allowing us to offer our classic **Exploring Alaska's Coastal Wilderness** itinerary (pgs 26-29), and go where the big white ships can't. The most advanced

expedition ships of their kind to be made entirely in the U.S.A., they are the perfect platforms for longer expeditions such as **Treasures of the Inside Passage** itinerary (pgs 22-25). Their 50 cabins, including 22 with step-out balconies make exploring picturesque regions a non-stop visual feast indoors and out. And 6 sets of connecting cabins make them ideal for families.





# SHARE YOUR EXPEDITION WITH THE BEST TEAM IN ALASKA

Learn, see, and do more by exploring with experts who know the region best. Share the adventure with a team of naturalists, a Lindblad Expeditions-National Geographic certified photo instructor, an expedition leader, and a video chronicler. Since personal attention is important, we explore with one staff member for every 10 guests, the largest expedition team and best guest-to-naturalist ratio in Alaska. And since you are never assigned to a staffer, you're able to gravitate towards individuals whose interests mirror your own—photography, kayaking, the undersea, whales, botany, or something different daily. Benefit from a greater variety of expertise, perfectly sized groups on hikes, varied perspectives, and engaging personalities.

▶ LEARN MORE AT [WWW.EXPEDITIONS.COM/EXPERTS](http://WWW.EXPEDITIONS.COM/EXPERTS)







*Enjoy naturalist-led expedition landing craft rides.*

*At left: The Bridge is an inviting space on board, drop in any time to see the Captain and officers at work. Certified photo instructor, Alberto Montaudon points out wildlife.*

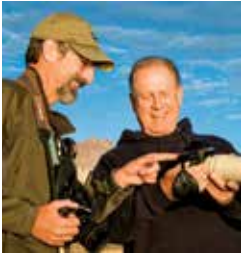


*At right, representing our expert team for the 2018 season, clockwise from upper left: Jen Martin, expedition leader; Rab Cummings, expedition leader; Susan Mobeus, wellness specialist; Paul North, undersea specialist; Jennifer Davidson, naturalist & certified photo instructor; Pete and Gretchen Pederson, naturalists; and Carlos Navarro, undersea specialist.*





# EXCLUSIVELY OURS ON EVERY DEPARTURE: CERTIFIED PHOTO INSTRUCTORS, AT YOUR SIDE & AT YOUR SERVICE



Lindblad-National Geographic certified photo instructors travel on all of our Alaska departures. Key members of our expedition teams, they're on board and in the field to assist with your camera settings, the basics of composition, and much more. They're excellent photographers, but more importantly, they're also naturalists who can teach

you how to observe and understand wildlife behavior so you aim at just the right time and place for a great shot. Even people who don't consider themselves photographers can get caught up in the fun of 'aim and create.' And everyone, at every skill level, can go home with shots they're proud to share. Explore with us and enjoy these unique benefits of our exclusive Expedition Photography program:

- ✓ **A Lindblad-National Geographic certified photo instructor on every departure**
- ✓ **A pre-expedition private webinar for booked guests—with gear recommendations, shooting and travel tips, plus a Q & A with our Director of Expedition Photography, Ralph Lee Hopkins**
- ✓ **Customized online gear recommendations & special savings from B&H Photo Video**
- ✓ **And much, much more!**





# DESIGNATED PHOTO EXPEDITIONS— AN IMMERSIVE WAY TO EXPLORE MORE



**NATIONAL  
GEOGRAPHIC**

When travel with a purpose is what you want, a photo-centric expedition

is a rewarding option. Immerse yourself in the world of professional travel and wildlife photography and discover Alaska from a new lens. All skill levels are welcome—our photo experts can meet you wherever you are on your journey. And since Photo Expeditions offer the same opportunities to actively explore as our other departures, photographers’ travel companions can be fully engaged while photographers miss out on nothing. Book a Photo Expedition and enjoy all the benefits from the previous page, plus:

- ✓ Exclusive opportunities to shoot with, and learn from, a top National Geographic photographer, plus at least two Lindblad-National Geographic certified photo instructors
- ✓ Special outings timed to take advantage of the best light
- ✓ Hikes & Zodiac cruises conducted at the ideal pace for photographers
- ✓ Onboard seminars, photo presentations, slideshows and sharing events we call “laptop galleries”



## MEET SOME OF THE NATIONAL GEOGRAPHIC PHOTOGRAPHY EXPERTS TRAVELING WITH US THIS SEASON



**PHIL SCHERMEISTER**

**Treasures Of The Inside Passage:  
Alaska & British Columbia**

*National Geographic Venture*

September 1, 2018

See page 24



**FLIP NICKLIN**

**Exploring Alaska’s Coastal  
Wilderness**

*National Geographic Quest,*

June 3 and 10, 2018

See page 28



**KRISTA ROSSOW**

**Wild Alaska Escape**

*National Geographic Sea Bird*

May 29 & June 3, 2018

See page 30



**RICH REID**

**Big Picture Alaska**

*National Geographic Sea Bird*

July 18 & July 28, 2018

See page 36

▶ READ BIOS AT  
[EXPEDITIONS.COM/EXPEDITION\\_TEAM](http://EXPEDITIONS.COM/EXPEDITION_TEAM)





## EXPERIENCE ALASKA WITH ALL YOUR SENSES

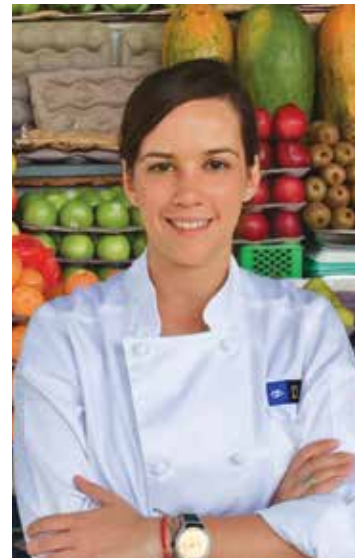
Whether it's satisfying your appetite kindled by active exploration in the exhilarating fresh air or keeping your spirit of anticipation whetted while aboard, the culinary side of our expedition team is equal to the challenge. Much of the food prepared is sourced locally whenever possible from sustainable providers, with ingredients and flavors that reflect Alaska's wild bounty. Both breakfast and lunch are served buffet-style with plenty of variety to choose from, while dinner is plated and served by our gracious wait staff. And since seating is open, allowing you to choose where to dine, mealtimes are more than opportunities to eat well, they're also a chance to join naturalists, guest speakers, ship's officers and fellow guests to engage in stimulating conversation and gain deeper insight into the nature and culture of the region.





*“Alaska’s tonic air combined with the time we spend on deck or actively engaged in exploring works up a healthy appetite. And there’s no better place to satisfy it than in Alaska, where our commitment to sustainable seafood rewards us every day. Our chefs have their choice of local seasonal fish varieties, from day boat haddock and line-caught salmon to fresh lobster, all sourced from providers we’ve known and worked with for years. And they provision produce from sustainable local growers, too. Fresh bread is baked aboard for breakfast, lunch and dinner, as are breakfast pastries and desserts. Berry season is celebrated aboard, for sure! Our culinary focus and skill ensures you will experience Alaska with all your senses.”*

—Ana Esteves, Manager Hotel Operations, Lindblad Expeditions



*Facing page, from top: Head Chef Eric Seabury shows off fresh Dungeness crabs to be served for dinner on board; select from an assortment of fine wines while dining.*

*This page, clockwise from above: Ana Esteves; fresh breads are baked and served daily; an example of a delicious, plated dinner; enjoy berries in season.*





# IMMERSE YOUR FAMILY IN ALASKA'S RARE WILDNESS



Discover how a wild, beautiful land and active adventure can entwine a family's interests—kayak side-by-side through a quiet cove, hike the forest, draw safely near a thundering glacier in a Zodiac, spot a bald eagle, or watch humpback whales surge as they feed—together. Our expeditions are seamless family getaways where everything is taken care of; all you have to

do is relax and enjoy the adventure. Kids thrive in the sociable confines of the ship where they can exercise some autonomy, and our naturalists are excellent role models who ably embed learning in every fun activity. Photo workshops with a Lindblad-National Geographic certified photo instructor using smartphones or point-and-shoots. Hands-on science using the video microscope and learning about conservation projects, plus hands-on nature lessons with our naturalists who are trained to work with kids and are excellent role models. The National Park Service representative on board from Glacier Bay National Park gives kids a journal for them to write and draw in as they're inspired throughout the voyage. Scavenger hunts. Plus, expedition landing craft driving lessons and "certificates of achievement." Kid-friendly menus and movie night with pizza are always a hit, too. Our kids program is learning disguised as fun. You'll see kids discover hidden talents and gain confidence while having the time of their lives. We invite you to take advantage of savings: **\$500 off the double occupancy rate for each person under the age of 18.**

▶ LEARN MORE ABOUT FAMILY ADVENTURES AT [EXPEDITIONS.COM/FAMILY](https://www.expeditions.com/family)



*Three generations of one family share a nature hike together.*



*A young guest holds glacial ice.*







*Expedition travel brings out the kid in everyone, allowing ages 8 to 80 to experience something totally new together.*



*Family expedition landing craft cruise.*

*“In this era of devices and seemingly limitless connectivity, it’s become far too easy for family members to spend more time with their phones and tablets than each other. Expedition travel, with its mix of fresh daily sights, wildlife, undersea wonders, and activities for every age and fitness level, is the perfect antidote—to disconnect your family from screens, and re-connect you with each other.”*

—SVEN-OLOF LINDBLAD, CEO & FOUNDER  
LINDBLAD EXPEDITIONS





# CHOOSE FROM FIVE DIVERSE ITINERARIES

Seward's Folly. Once Alaska was little valued, and now it tops the list of travelers who seek genuine wildness. And our mission here is to explore, to discover the authenticity of this region, where otters swim past our kayaks, bears forage the shores, glaciers calve, and eagles fly low over quiet inlets. To go where only our nimble shallow-draft vessels can, into the narrow channels where whales feed. To roam freely, searching for the heart and soul of Alaska in its roadless communities, and in Haida lands, which we are privileged to visit, to encounter a place and people, there since time immemorial. Each itinerary is unique, offering a deeply rewarding facet of this iconic region. Choose any one, and you've chosen well.

## **TREASURES OF THE INSIDE PASSAGE: ALASKA & BRITISH COLUMBIA**

The orca-studded waters of the San Juan Islands. Alert Bay and the Kwakwaka'wakw people. Historic Johnstone Strait and British Columbia's regal Inside Passage. The glacier-carved cliffs of Misty Fjords, and the thunderously calving terminals of Glacier Bay. Discover these and more.

*Appeal: Culture & natural history; immersive, active, Itinerary on pages 24-25.*

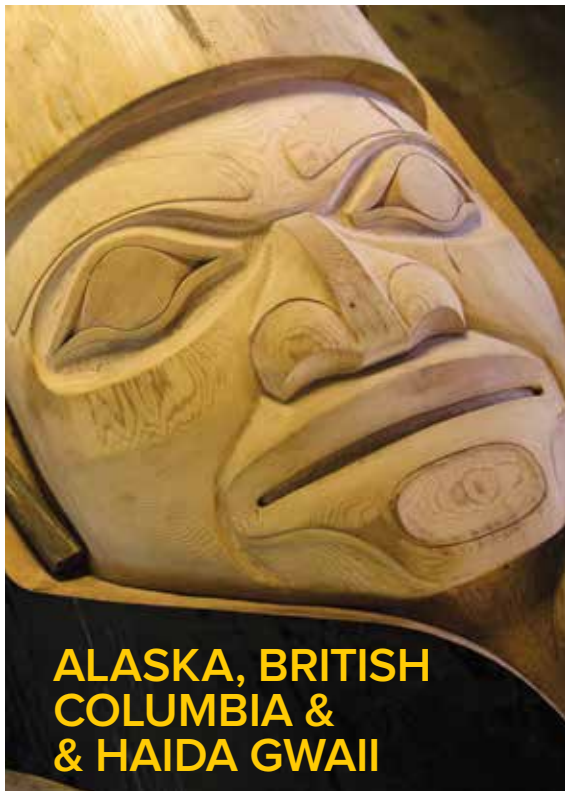




## EXPLORING ALASKA'S COASTAL WILDERNESS

Time-tested over 35 years our classic Alaska expedition itinerary delivers unparalleled experiences; and now, the luxury of choice: the new 100-guest *National Geographic Quest* and *Venture*, or the 62-guest *National Geographic Sea Lion*.

**APPEAL:** *Romance of iconic Alaska; whale-watching, old-growth forests, glaciers. Itinerary on pages 28-29.*



## ALASKA, BRITISH COLUMBIA & HAIDA GWAI

*National Geographic Sea Bird* and *Sea Lion* are the only U.S. vessels permitted to visit Haida lands in over 20 years.

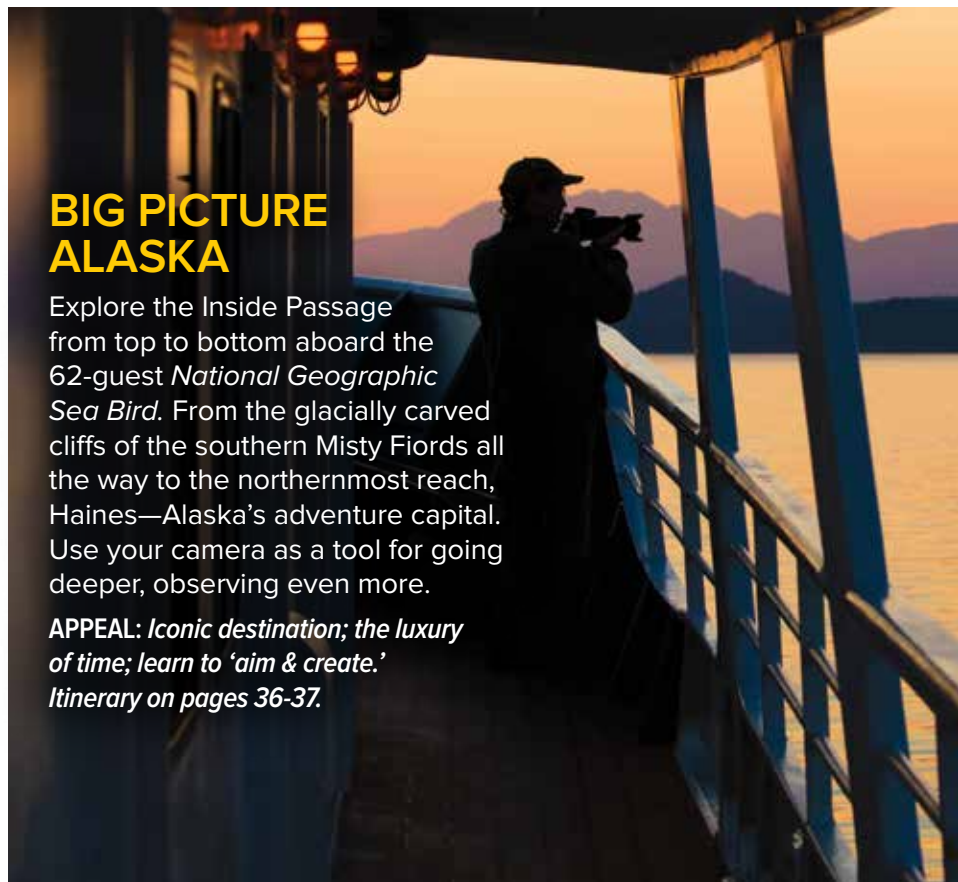
The Haida are legendary Pacific coast artists and artisans. To see the silvered totem poles at ancestral S<sub>G</sub>ang Gwaay Lnagaay is indeed a privilege.

**APPEAL:** *Culture & history; destination rarity; people-to-people encounters; marine & bird wildlife. Itinerary on pages 34-35.*

## WILD ALASKA ESCAPE

Hike! Bike! Raft! Kayak! This highly active Alaska expedition aboard the 62-guest *National Geographic Sea Bird* immerses you (and your active family) in Alaska's wild beauty, including Haines, Alaska's "adventure capital." A larger, active naturalist staff and small groups enable customized explorations.

**APPEAL:** *Active exploring in a world-class location; families. Itinerary on pages 30-31.*



## BIG PICTURE ALASKA

Explore the Inside Passage from top to bottom aboard the 62-guest *National Geographic Sea Bird*. From the glacially carved cliffs of the southern Misty Fjords all the way to the northernmost reach, Haines—Alaska's adventure capital. Use your camera as a tool for going deeper, observing even more.

**APPEAL:** *Iconic destination; the luxury of time; learn to 'aim & create.' Itinerary on pages 36-37.*



# TREASURES OF THE INSIDE PASSAGE



*Explore by kayak.*





On the lookout for wildlife.

The whale-studded waters of the San Juan Islands. Alert Bay and the *Kwakwaka'wakw* people. Historic Johnstone Strait and the regal landscapes of British Columbia's Inside Passage. The glacier-carved cliffs of Misty Fiords, and the thunderously calving terminals of Glacier Bay. These and more are the magnets that pull adventurous travelers to Alaska and British Columbia—and are what *National Geographic Quest* and *Venture* have been expressly designed to discover. They are the perfect platforms for exploring—with onboard fleets of landing craft, kayaks, and paddle boards, and exceptional expedition teams. Larger than our other Alaska ships, *National Geographic Quest* and *Venture* carry 100 guests each, while retaining the intimate scale and warmth of the 62-guest *National Geographic Sea Bird* and *Sea Lion*. So, for those who love sharing the bow with our expedition team as we watch feeding humpbacks or hunting killer whales, the experience is amazing. But with more space and amenities, *National Geographic Quest* and *Venture* offer a level of comfort that enhances the entire expedition experience, from early morning outings to cocktail hour recaps.



Guests watch a performance in the big house in Alert Bay.



NEW STOP  
IN VICTORIA,  
BRITISH COLUMBIA

# TREASURES OF THE INSIDE PASSAGE: ALASKA AND BRITISH COLUMBIA

**14 DAYS/13 NIGHTS ABOARD NATIONAL GEOGRAPHIC QUEST & VENTURE**

PRICES FROM: \$9,990 TO \$15,960 (See pages 40-41 for complete prices.)

Board the newest ships in the Lindblad-National Geographic fleet, *National Geographic Quest* and the *National Geographic Venture* (launching June 24, 2018), on an in-depth exploration of the San Juan Islands, British Columbia, and Alaska. Linger in the temperate rain forests and wildlife-rich channels of British Columbia, and enjoy ample time to explore the breathtaking fjords and towering glaciers of Southeast Alaska. Plus, discover the cultural facets of this coast during captivating performances and interactions with the Kwakwaka'wakw people of Alert Bay.

## EXPEDITION HIGHLIGHTS

- ▶ **NEW 2018**—Explore the charming city of Victoria, British Columbia via custom curated tours and enjoy a private reception surrounded by incredible artwork at the Robert Bateman museum.
- ▶ Join the June 24 Inaugural Voyage aboard the *National Geographic Venture*.
- ▶ Explore the wild and sublimely tranquil San Juan and Gulf Islands.
- ▶ Observe a moving First Nations performance at the U'Mista Cultural Center.
- ▶ By special permit, spend a full day exploring Glacier Bay National Park.

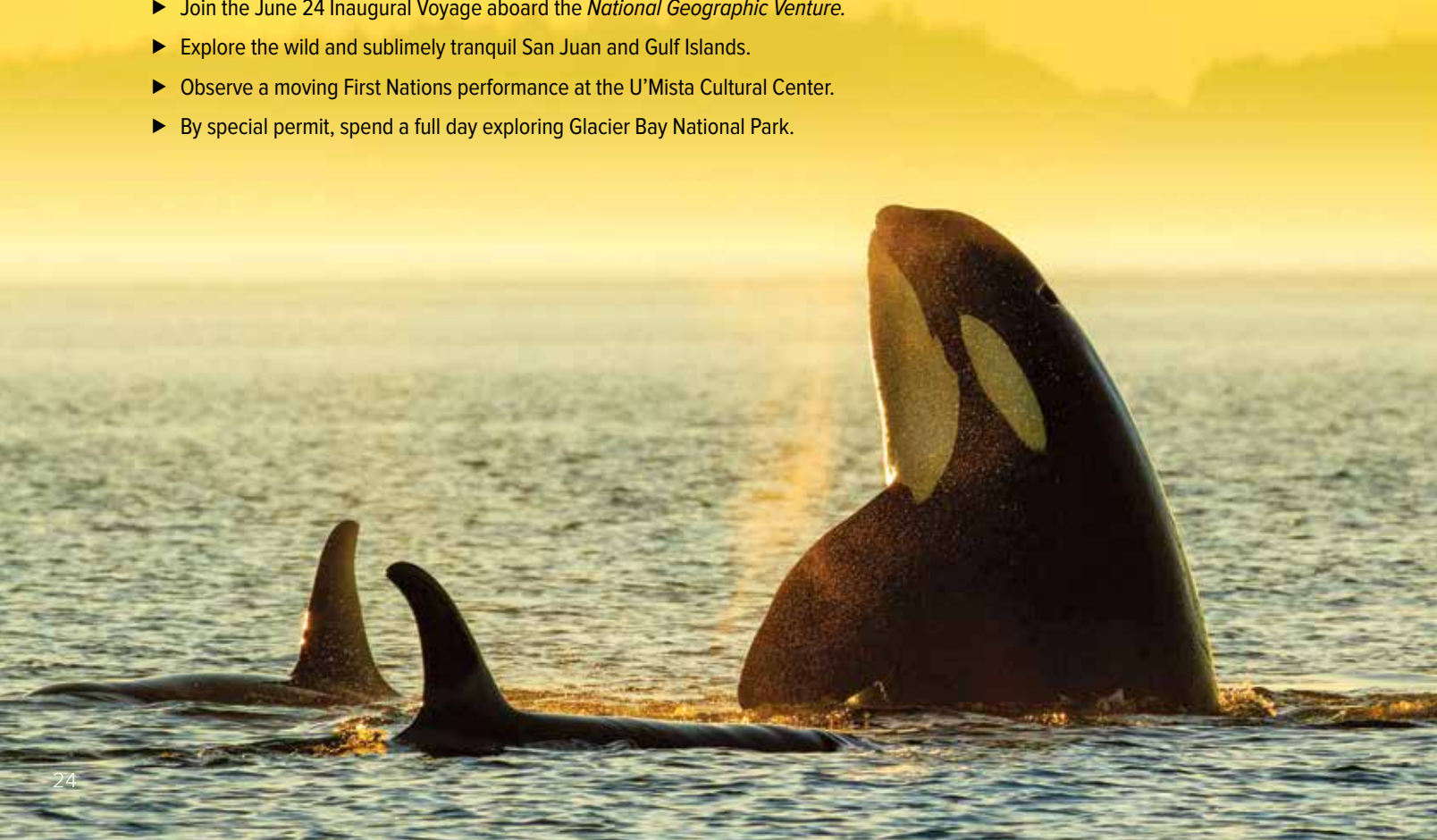
## EXPERIENCE & EXPERTISE

**30+**  
YEARS  
EXPERIENCE

Our unparalleled 10-person team aboard the *Quest* and *Venture* is key to an in-depth experience. An expedition leader, 4 naturalists (depending on the ship), a Lindblad-National Geographic certified photo instructor and undersea specialist, plus a wellness specialist and video chronicler all contribute to your understanding of Alaska's wonders. Certain departures will feature a National Geographic photographer or expert.

Visit our website to read staff and guest speaker bios for this expedition.

*Northern resident killer whales playing and spyhopping, Alert Bay, British Columbia.*





**DAY 1: SEATTLE/EMBARK**

Arrive in Seattle this afternoon and embark the ship. (D)

**DAY 2: SAN JUAN ISLANDS, WASHINGTON**

Spend a full day exploring the San Juan Islands via naturalist-led hikes and by kayak. Search for killer whales. (B,L,D)

**DAY 3: VICTORIA, BRITISH COLUMBIA**

Clear into Canada in the charming city of Victoria and choose from several tailor-made options to explore based on your interests. Visit private gardens, bike along the waterfront, take a historical stroll through Old Town or peruse the collections at local art galleries. In the evening, enjoy a private reception at the Robert Bateman Centre while taking in the incredible collection of paintings. (B,L,D)

**DAY 4: GULF ISLANDS**

Located in the Strait of Georgia, between the mainland of British Columbia and Vancouver Island, the Gulf Islands are a kayaker's paradise. Explore the myriad islets and rocky coasts and keep an eye out for harbor seals and an array of sea birds, shore birds and birds of prey. (B,L,D)

**DAY 5: ALERT BAY AND JOHNSTONE STRAIT, BRITISH COLUMBIA**

Observe a traditional First Nations performance in Alert Bay, visit the U'Mista Cultural Center, and learn from the Kwakwaka'wakw people. (B,L,D)

**DAYS 6-7: INSIDE PASSAGE OF BRITISH COLUMBIA**

Head northward along the pristine coastline in search of whales, dolphins, bears, deer, and other wildlife. Go ashore to explore or kayak among the many bays and inlets. (B,L,D)



Inner Harbour, Victoria, British Columbia.

**DAY 8: MISTY FIORDS, ALASKA**

Cruise past glacially-carved cliffs and kayak in the stillness of Misty Fjord's forested backwaters. (B,L,D)

**DAY 9: PETERSBURG**

Search for humpback whales as we head towards the small, fishing village of Petersburg on Mitkof Island. Go ashore for a walk along a quiet forest trail and explore the unique Southeast Alaskan ecosystem, the "muskeg," with stunted trees and carnivorous plants. Later, enjoy an evening crab feast. (B,L,D)

**DAY 10: TRACY ARM-FORD'S TERROR WILDERNESS**

Voyage into Tracy or Endicott Arm, both spectacular fjords, with waterfalls cascading from glacially carved walls. See the soaring Dawes or South Sawyer Glacier up close and take a Zodiac cruise for an unbeatable view of sculpted icebergs. (B,L,D)

**DAY 11: GLACIER BAY NATIONAL PARK**

Via special park permit, spend the entire day among the enormous glaciers and expansive wilderness. Listen as the quiet stillness of the area is broken by the thunder of tons of ice calving into the sea. A native Tlingit interpreter joins us to share the lore and legend of the area. Wilderness abounds! (B,L,D)

**DAY 12: INIAN ISLANDS / ICY STRAIT**

Cruise among the Inian Islands, where an abundance of Steller sea lions reside. Hike nearby islands, kayak, and search for whales in rich waters of Icy Strait. (B,L,D)

**DAY 13: EXPLORING BARANOF OR CHICHAGOF ISLAND**

Spend a full day searching for humpback whales in the rich waters off of Chichagof or Baranof Island, kayak, hike and enjoy the Captain's Farewell Dinner this evening. (B,L,D)

**DAY 14: SITKA/DISEMBARK/HOME**

Visit Saint Michael's Russian Orthodox Cathedral with its picturesque spire; walk through the Sitka National Historical Park, where totem poles line trails; and meet eagles up close at the Raptor Rehabilitation Center. Transfer to the airport for flights home. (B)



**EXPEDITION DETAILS**

**DATES:** 2018 Apr. 30; Sep. 2\* (*Quest*)  
Jun. 24; Sep. 1\* (*Venture*)

\*These departures travel in the reverse order from Sitka to Seattle, making all the same stops.

**SPECIAL OFFER:**

Book by **Sept. 30, 2017** and receive complimentary one-way air (Sitka/Seattle) on the Apr. 30 & Sept. 1 & 2, 2018 departures. Subject to availability. New bookings only.

**NATIONAL GEOGRAPHIC PHOTOGRAPHER**

Phil Schermeister joins the Sept. 1 & 2, 2018 departure.



Sea otter eating urchins.





*Harbor seals hauled out on icebergs in South Sawyer Glacier in Tracy Arm.*





# EXPLORING ALASKA'S COASTAL WILDERNESS

## Our Time-Tested Expedition Plus The Luxury Of Choice

For over 35 years, our classic Alaska expedition itinerary has consistently delivered unparalleled experiences in this capital of wildness. We know the protected coves where sea otters congregate, the river rapids where bears fish for salmon, and the rich channels where whales feed. And now, we're able to offer the luxury of choice in exploring—sail aboard the newest ships in our fleet, the *National Geographic Quest* and *Venture* holding 100 guests each, or choose the 62-guest *National Geographic Sea Lion*. Both offer the same exploration into the breathtaking beauty and wildlife of Southeast Alaska. The *National Geographic Quest* and *Venture* offer more spacious cabins, while *Sea Lion* sails with a bit more intimate of a group. With more naturalists aboard the *National Geographic Quest* and *Venture* to accommodate more guests, you're able to explore with the benefit of more perspective and a wider breadth of expertise. And, thanks to two expedition landing craft loading platforms aboard, both ships disembark guests at the same rate, which maximizes our time exploring off the ship.



*Killer whale sighting in the Inian Islands.*



# EXPLORING ALASKA'S COASTAL WILDERNESS

**8 DAYS/7 NIGHTS—ABOARD NATIONAL GEOGRAPHIC SEA LION, NATIONAL GEOGRAPHIC QUEST & NATIONAL GEOGRAPHIC VENTURE**

PRICES FROM: \$5,990 to \$10,600 (See pages 41 & 43 for complete prices.)

Experience the remarkable beauty of Southeast Alaska on a voyage aboard the *Sea Lion*, *Venture*, or *Quest* into a land of mist-shrouded fjords, tidewater glaciers, and islands teeming with wildlife. Search for killer whales and humpback whales, kayak amid glacial ice, spend a full day in Glacier Bay National Park, and learn about Alaska's rich Tlingit heritage.

## EXPEDITION HIGHLIGHTS

- ▶ Kayak into protected coves and look for sea otters, seabirds, and harbor seals.
- ▶ Hike through lush forests to cascading waterfalls, and ride an expedition landing craft into coves to look for brown bears.
- ▶ Meet members of the Alaska Whale Foundation to learn about the local whale population, and get a first-hand perspective on Alaska's indigenous people from a Tlingit cultural interpreter.
- ▶ Discover Alaska's seldom-seen, vibrant marine life revealed by our undersea specialist.

## EXPERIENCE & EXPERTISE



Our unparalleled 6-person expedition team aboard the *Sea Lion* or 10-person team aboard the *Quest* and *Venture* is key to an

in-depth experience. An expedition leader, 4 naturalists (depending on the ship), a Lindblad-National Geographic certified photo instructor and undersea specialist, plus a wellness specialist and video chronicler all contribute to your understanding of Alaska's wonders. Certain departures will feature a National Geographic photographer or expert.

*Visit our website to read staff and guest speaker bios for this expedition.*

Add a pre- or post-trip 7-day inland exploration to Denali National Park. (See page 38-39 for details.)

*A humpback whale breaches.*



### DAY 1: SEATTLE/JUNEAU/EMBARK

Fly from Seattle to Juneau. Explore the newly constructed Alaska State Museum, with its sprawling collection of natural history and cultural artifacts, and explore downtown Juneau. Settle into your cabin before dinner. Later, explore the port of Juneau on your own. (D)

### DAY 2: TRACY ARM—FORDS TERROR WILDERNESS

Voyage into Tracy or Endicott Arm, both spectacular fjords, with waterfalls cascading from glacially carved walls. See the soaring Dawes or South Sawyer Glacier up close and take a cruise in an expedition landing craft for an unbeatable view of sculpted icebergs. Keep an eye out for harbor seals, porpoises and arctic terns. (B,L,D)



Petersburg.

### DAY 3: PETERSBURG

Search for humpback whales as we head towards the small, true Alaskan town of Petersburg on Mitkof Island. Explore a unique Southeast Alaskan ecosystem, the “muskeg,” with stunted trees and carnivorous plants. There is an opportunity for bike riding and an optional floatplane excursion. Enjoy a crab feast this evening. (B,L,D)

### DAY 4: FREDERICK SOUND AND CHATHAM STRAIT

With luck, we'll see whales breaching, tail-slapping or feeding. We'll explore spectacular bays and inlets, following bear trails and salmon streams. Later, hike or kayak for up close exploration. (B,L,D)

### DAY 5: ICY STRAIT AND THE INIAN ISLANDS

Explore among the Inian Islands, where an

abundance of Steller sea lions and sea otters reside. We'll search for marine mammals in the rich waters of Icy Strait and choose the perfect spot around Chichagof Island to hike and kayak. (B,L,D)

### DAY 6: GLACIER BAY NATIONAL PARK

By special permit, we explore Glacier Bay, a not-to-be-missed gem of Alaska. See glaciers that end abruptly at the water's edge and possibly observe them “calving”—tons of ice crashing into the sea—accompanied by an exhilaratingly thunderous sound. Wilderness abounds—mountain goats and brown bears patrol the shore; harbor seals, Steller sea lions and puffins live in these icy waters. A native Tlingit interpreter joins us to share the lore and legend of the area. We will also be joined by a National Park Service Ranger. (B,L,D)

### DAY 7: SOUTHEAST ALASKA'S ISLANDS, BAYS AND FJORDS

Today, nature is our guide. We may explore an isolated beach to take a closer look at tide pools, beachcomb, or hike stunning forest trails, or see bear tracks worn into the soil while walking an isolated meadow. Sightings of bald eagles are very common. If conditions permit, we'll do some kayaking, always watching for marine and terrestrial life. (B,L,D)

### DAY 8: SITKA/DISEMBARK/SEATTLE

After breakfast we disembark in Sitka, Southeast Alaska's only oceanfront town. Visit the onion-domed St. Michael's Russian Orthodox Church. At the Raptor Rehabilitation Center, we have close views of species normally seen at a distance. Drive to the airport for our afternoon flight to Seattle. (B)



Steller sea lions.



### EXPEDITION DETAILS

**DATES: 2018** May 20\*, 27; June. 3\*, 10, 17\*, 24; Jul. 1\*, 8, 15\*, 22, 29\*; Aug. 5, 12\*, 19 (*Sea Lion*) May 13\*, 20, 27\*; Jun. 3, 10\*, 17, 24\*; Jul. 1, 8\*, 15, 22\*, 29; Aug. 5\*, 12, 19\*, 26 (*Quest*) Jul. 7\*, 14, 21\*, 28; Aug. 4\*, 11, 18\*, 25 (*Venture*)

\*Indicates itineraries in the reverse order, from Sitka to Juneau, making all the same stops.

### SPECIAL OFFER:

Book by **Sept. 30, 2017** and receive complimentary round-trip airfare between Seattle and Alaska on select May and June departures.

### EXPLORE TONGASS NATIONAL FOREST

Our Forest Service Special Use Permit for Tongass National Forest enables you to hike and kayak in wild and remote areas of Southeast Alaska.

### NATIONAL GEOGRAPHIC PHOTOGRAPHER

Join Alaska resident and marine mammal photographer **Flip Nicklin** on the June 3 & 10, 2018 voyages aboard the *National Geographic Quest*.





# WILD ALASKA ESCAPE

**6 DAYS/5 NIGHTS—ABOARD NATIONAL GEOGRAPHIC SEA BIRD**

PRICES FROM: \$4,290 to \$7,490 (See page 42-43 for complete prices.)

Explore wild Alaska on an active, exciting expedition to see the region's iconic wildlife and epic landscapes in the compact timeframe of one work week. Take long hikes on world-class trails through forests of towering trees, kayak long routes deep into glacially carved fjords, stand-up paddleboard in calm bays, and raft to an ancient Alaska native village—all with our nimble expedition ship as your moving basecamp.

## EXPEDITION HIGHLIGHTS

- ▶ Paddle on long, naturalist-guided kayaking journeys into Alaska's dramatic bays.
- ▶ Explore Haines, the "adventure capital of Alaska," via raft, bicycle, or hiking boots.
- ▶ Zip around incredible icebergs and to the face of a glacier in Tracy or Endicott Arm.

## EXPERIENCE & EXPERTISE

**30+**  
YEARS  
EXPERIENCE

Our unparalleled 6-person expedition team is key to an in-depth experience.

An expedition leader, three naturalists, a Lindblad-National Geographic certified photo instructor, plus a wellness specialist and video chronicler, all contribute to your understanding of Alaska's wonders. Certain departures will feature a National Geographic photographer or expert.

*Visit our website to read staff and guest speaker bios for this expedition.*

*Explore by bike in Haines.*





### DAY 1: SITKA/EMBARK

Arrive in Sitka, Southeast Alaska's only oceanfront town. Stretch your legs by walking the Totem Trail in Sitka National Historic Park or other local nature trails before stopping in at the Raptor Rehabilitation Center for an up close look at Alaska's birds of prey. Embark *National Geographic Sea Bird*. (L,D)

### DAY 2: EXPLORING BARANOF OR CHICHAGOF ISLAND

Immerse yourself in the wilds of Alaska as you kayak deep into one of Baranof or Chichagof Island's countless, breathtaking bays. Hear bald eagles call from the tops of towering spruce and hemlock trees as you paddle through these mirror-calm waters. In the afternoon, hear the stories of this ancient rain forest on an adventurous hike with your naturalist guide. (B,L,D)

### DAY 3: LYNN CANAL

At the northern limit of Alaska's Inside Passage, the Lynn Canal offers ample opportunity for active exploration. Spend today hiking and kayaking in the shadows of snow-capped peaks where the mighty Chilkat River meets the sea. Tonight we'll call into the small town of Haines for an Alaskan evening as the locals do. (B,L,D)



*Floating down the Chilkat River.*

### DAY 4: HAINES

Haines is known as the "adventure capital of Alaska" for a very good reason. Many, in fact. If you're feeling extra adventurous, you can choose from one of many world class hikes, cycle along the edge of a glacial fjord, or take an optional float plane excursion over Glacier Bay National Park. Or you may also choose to raft down the Chilkat River, calling into the ancient Chilkat Tlingit village of Klukwan for a dance demonstration and cultural interpretation. The day is full of options. (B,L,D)

### DAY 5: TRACY ARM—FORDS TERROR WILDERNESS

Awake this morning in the stunningly beautiful Tracy or Endicott Arm, part of the Fords Terror Wilderness. Enter this glacially carved wilderness aboard our nimble ship, then set out to explore by expedition landing craft for a view of South Sawyer or Dawes Glaciers. If conditions permit, hop into one of our kayaks to paddle along fjord walls that soar straight from the sea, as you spot curious harbor seals trailing your wake. Cap off your adventurous voyage with the Captain's farewell dinner. (B,L,D)



*Early morning hike.*

**DAY 6: JUNEAU/DISEMBARK/SEATTLE**  
Disembark in downtown Juneau and transfer to the airport for flights to Seattle. (B)



### EXPEDITION DETAILS

**DATES:** 2018 May 19, 24\*, 29; Jun. 3\*, 28; Jul. 3\*, 8, 13\*; Aug. 7, 12\*, 17, 22\*

\*Indicates itineraries in the reverse order, from Juneau to Sitka, making all the same stops.

### NATIONAL GEOGRAPHIC PHOTOGRAPHER

Travel with National Geographic photographer, **Krista Rossow** on the May 29 & June 3, 2018 voyages.



*South Sawyer glacier.*



# A REMARKABLE JOURNEY TO ALASKA, BRITISH COLUMBIA & HAIDA GWAI



## Special Access to Mythic Haida Gwaii

Though Haida Gwaii, a spectacular archipelago off British Columbia, is known as the “islands at the edge of the world,” it is well within reach aboard *National Geographic Sea Bird* and *Sea Lion*—the only U.S. vessels permitted to visit these hallowed islands in over 20 years. The Haida are legendary Pacific coast artists and artisans. So, we

were initially permitted to visit Haida lands because of our commitment to artisans, evidenced by our Artisan Fund (financed by a percentage of sales from onboard Global Galleries) and the environment in which they create their works. To see their works, most strikingly the totems created by master carvers, and to hear the stories woven into the very fibers of Haida regalia, is indeed a privilege. Haida cultural interpreters will introduce us to a wealth of cultural objects—including the legendary site, SḠang Gwaay Lnagaay, where silvered totem poles some 150–200 years old, line the shore.

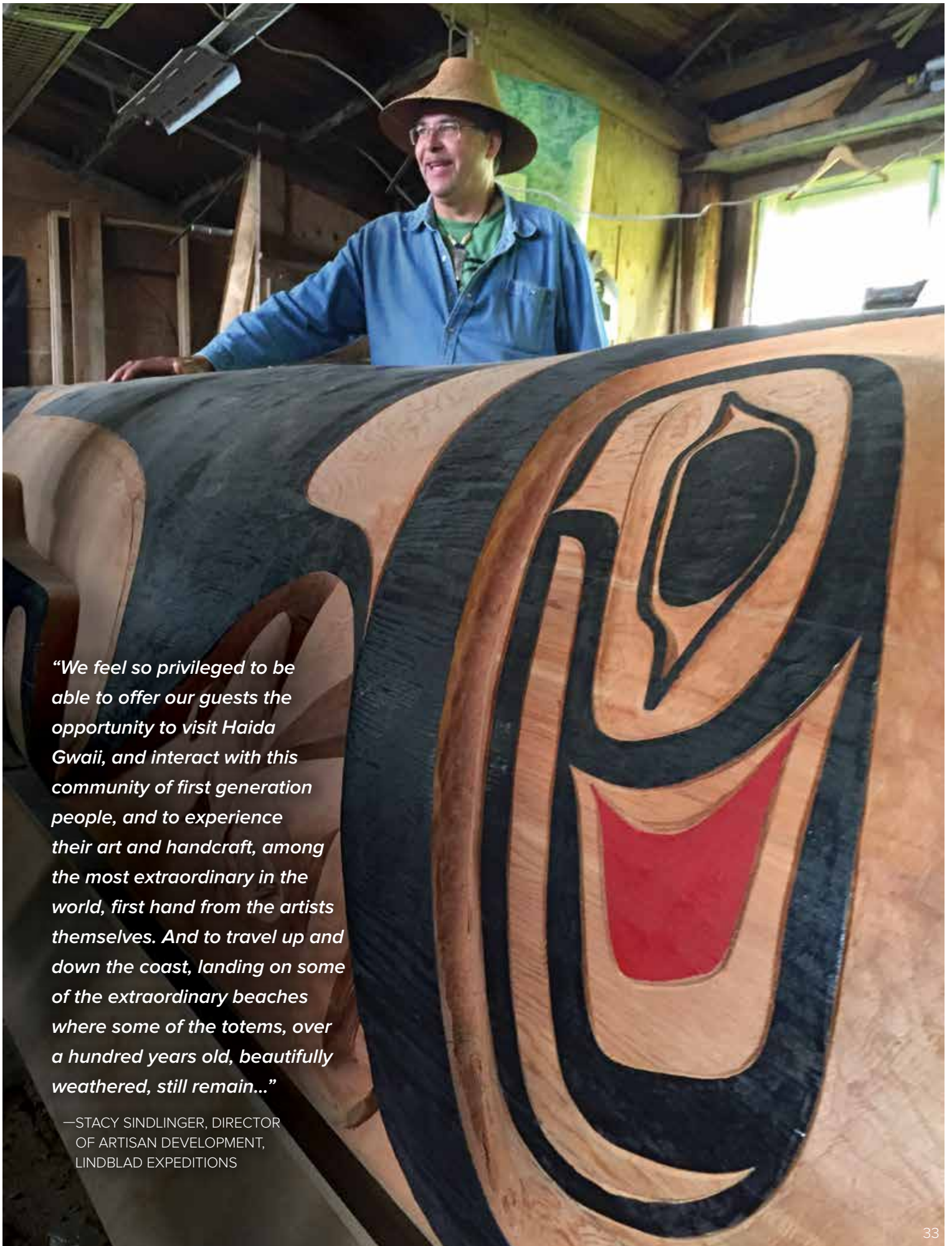
## Plus An In-Depth Southeast Alaska Exploration

Sail into mist-shrouded fjords and see the thundering glaciers of Southeast Alaska. See whales, bears, eagles—all of the region’s iconic wildlife—on an expedition to the state’s famed natural wonders as well as some out-of-the-way regions we’ve uncovered in our 30+ years here. This long expedition gives us a richer opportunity for more wildlife observations.



*Clockwise from top left: Wood carver at work in Old Massett; masks created by world-renowned Haida artist in his home studio; Haida artist Christian White stands next to an unfinished totem pole he is carving; a traditional Haida dance performance.*





*“We feel so privileged to be able to offer our guests the opportunity to visit Haida Gwaii, and interact with this community of first generation people, and to experience their art and handcraft, among the most extraordinary in the world, first hand from the artists themselves. And to travel up and down the coast, landing on some of the extraordinary beaches where some of the totems, over a hundred years old, beautifully weathered, still remain...”*

—STACY SINDLINGER, DIRECTOR  
OF ARTISAN DEVELOPMENT,  
LINDBLAD EXPEDITIONS



# A REMARKABLE JOURNEY TO ALASKA, BRITISH COLUMBIA & HAIDA GWAI

**15 DAYS/14 NIGHTS—ABOARD NATIONAL GEOGRAPHIC, SEA BIRD & NATIONAL GEOGRAPHIC SEA LION**

PRICES FROM: \$10,900 to \$19,860 (See pages 38 & 39 for complete prices.)

Join a unique expedition in Alaska's Inside Passage and British Columbia including Haida Gwaii (formerly the Queen Charlotte Islands) off the coast of British Columbia. We are the only company with ships carrying more than 22 guests permitted to visit Gwaii Haanas National Park Reserve, National Marine Conservation Area Reserve, and Haida Heritage site in over two decades. Here, you'll see the ancient totems at SGang Gwaay (Ninstints), a UNESCO World Heritage site, and meet with local artisans in a region rich with history seldom-seen.

## EXPEDITION HIGHLIGHTS

- ▶ Explore glacially-carved fjords, Glacier Bay National Park, and search for humpback whales in their summer feeding grounds.
- ▶ Kayak spectacular bays, see waterfalls cascading from glacially-carved walls, and hike old-growth forest where paw prints outnumber footprints.
- ▶ Explore ancestral Haida villages, see ancient totem poles, take part in a traditional dance performance, and much more.
- ▶ Be amongst endemic species in Haida Gwaii, considered the "Canadian Galápagos" for its wildlife-rich intertidal zone.

## EXPERIENCE & EXPERTISE

**30+**  
**YEARS**  
EXPERIENCE

Our unparalleled 6-person expedition team is key to an in-depth experience.

An expedition leader, three naturalists, a Lindblad-National Geographic certified photo instructor, Haida Cultural Interpreter, and undersea specialist, plus a wellness specialist and video chronicler, all contribute to your understanding of Alaska's wonders. Certain departures will feature a National Geographic photographer or expert.

*Visit our website to read staff bios for this expedition.*

*Standing totem pole at SGang Gwaay.*





### DAY 1: SEATTLE/EMBARK

Arrive in Seattle this afternoon and embark *National Geographic Sea Bird* or *Sea Lion*. (D)

### DAY 2: GULF ISLANDS, BRITISH COLUMBIA

Search for orca whales and sail north past forested islands. (B,L,D)



Guests visit with carvers, Haida Gwaii.

### DAY 3: JOHNSTONE STRAIT AND ALERT BAY, BRITISH COLUMBIA

Visit the U'mista Cultural Centre in Alert Bay, where we'll watch traditional First Nations performances and learn from the Kwakwaka'wakw people. (B,L,D)

### DAYS 4-5: INSIDE PASSAGE OF BRITISH COLUMBIA

Head northward along the coastline looking for whales, dolphins, bears, deer and other wildlife. Go ashore to explore or kayak the remote bays and inlets. (B,L,D)

### DAYS 6-8: HAIDA GWAI

With a shared respect for the natural world, explore the islands of Haida Gwaii. A Haida cultural interpreter will join us, first visiting the Haida Heritage Centre at Kay Lnagaay to learn about the incredible history of the Haida people and the meaning behind their renowned artwork. In the ancestral town of Old Massett, join in a traditional dance performance and feast, and meet local artisans. Explore the Gwaii Haanas National Park Reserve, National Marine Conservation Area Reserve, and Haida Heritage site. By special permit, see the ancient totems at SGang Gwaay (Ninstints) or K'una (Skedans). Take expedition landing craft around the incredibly biodiverse islands where endemic species thrive. (B,L,D)

### DAY 9: MISTY FJORDS, ALASKA

Cruise past glacially carved cliffs and kayak in the stillness of Misty Fjords' forested backwaters. (B,L,D)

### DAY 10: FREDERICK SOUND AND PETERSBURG

Join naturalists on deck and search for orcas, humpback whales, and Steller sea lions. Go ashore for a walk along a quiet forest trail and visit the fishing village of Petersburg, known as "Alaska's Little Norway." Enjoy a crab feast this evening. (B,L,D)

### DAY 11: TRACY ARM-FORDS TERROR WILDERNESS

Voyage into Tracy or Endicott Arm, both spectacular fjords, with waterfalls cascading from glacially carved walls. See the soaring Dawes or South Sawyer Glacier up close and take a cruise in an expedition landing craft for an unbeatable view of sculpted icebergs. (B,L,D)

### DAY 12: GLACIER BAY NATIONAL PARK

Spend the entire day among enormous glaciers and expansive wilderness. Listen as the quiet stillness of the area is broken by the thunder of tons of ice calving into the sea. A native Tlingit interpreter joins us to share the lore and legend of the area. A National Park Service Ranger will join us as well. (B,L,D)

### DAY 13: ICY STRAIT AND THE INIAN ISLANDS

Cruise among the Inian Islands, where an abundance of Steller sea lions reside. Hike nearby islands, kayak and search for whales in rich waters of Icy Strait. Conditions permitting, we'll lower the ship's hydrophone to listen in on the whales' communication. (B,L,D)

### DAY 14: SOUTHEAST ALASKA'S ISLANDS, BAYS AND FJORDS

Kayak and hike among forested islands on our final exploration of Southeast Alaska. (B,L,D)

### DAY 15: SITKA/DISEMBARK/SEATTLE

See the picturesque city of Sitka on Baranof Island and meet eagles up close at the Raptor Rehabilitation Center before transferring to the airport for flights to Seattle. (B)



### EXPEDITION DETAILS

**DATES:** 2018 May 5 📷, Aug. 27\* (*Sea Bird*); May 6; Aug. 26\* 📷 (*Sea Lion*)

\*These departures travel in the reverse order, from Sitka to Seattle, making all the same stops.

📷 Photo Expedition

### SPECIAL OFFER:

Book by **Sept. 30, 2017** and receive **complimentary one-way air** (Sitka/Seattle) on select departures.

### NATIONAL GEOGRAPHIC PHOTOGRAPHERS

Each Photo expedition travels with a National Geographic photographer.



Zodiac tour of glacial ice.



# BIG PICTURE ALASKA

**11 DAYS/10 NIGHTS—ABOARD NATIONAL GEOGRAPHIC SEA BIRD**  
PRICES FROM: \$8,990 to \$15,740 (See pages 42 & 43 for complete prices.)

Sail aboard the *National Geographic Sea Bird* on this immersive, wide-ranging expedition through Alaska's famed Inside Passage. Experience the perfect mix of small-town life and the grand expanse of the wild landscape that surrounds it. Capture it all with the help of our Lindblad-National Geographic photo expedition team.

## EXPEDITION HIGHLIGHTS

- ▶ Raft though the Chilkat Bald Eagle Preserve, which boasts the largest congregation of bald eagles in the world.
- ▶ Explore Glacier Bay National Park, Misty Fiords National Monument, and search for humpback whales in their summer feeding grounds.
- ▶ Kayak amid glacial ice, hike the Tongass National Forest and learn about the region's rich Tlingit heritage.

## EXPERIENCE & EXPERTISE

**30+**  
**YEARS**  
EXPERIENCE

Our unparalleled 6-person expedition team is key to an in-depth experience. An expedition leader, three naturalists, a Lindblad-National Geographic certified photo instructor and undersea specialist, plus a wellness specialist and video chronicler, all contribute to your understanding of Alaska's wonders. Certain departures will feature a National Geographic photographer or expert.

*Visit our website to read staff and guest speaker bios for this expedition.*

*Kayaking for the perfect shot.*





### DAY 1: KETCHIKAN/EMBARK

Arrive in Ketchikan, view the priceless collection of 19th-century Tlingit totem poles at the Totem Heritage Center. Embark *National Geographic Sea Bird*. (D)

### DAY 2: MISTY FIORDS

Wake amid the glacially-carved cliffs of Misty Fiords National Monument. Explore by expedition landing craft and kayak for a closer perspective. (B,L,D)



Bald eagle.

### DAY 3: BEHM CANAL/CLARENCE STRAIT

Explore the verdant Tongass National Forest. Cruise through steep-walled fiords in search of photogenic wildlife. (B,L,D)

### DAY 4: THOMAS BAY/PETERSBURG

Call at the quaint Alaskan town of Petersburg on Mitkof Island. See a unique muskeg ecosystem with stunted trees and carnivorous plants. Explore by bike or optional flightseeing. (B,L,D)

### DAY 5: TRACY ARM—FORDS TERROR WILDERNESS

Navigate the spectacular Tracy or Endicott Arm fjords to South Sawyer or Dawes Glacier, and, if conditions permit, venture closer in our expedition landing craft for unparalleled photo opportunities. (B,L,D)

### DAY 6: HAINES

Explore Alaska's "adventure capital" on a world class hike or bike ride along the edge of a glacial lake. Or raft the Chilkat River to a bald eagle preserve, and call at the ancient Chilkat Tlingit village of Klukwan for a cultural interpretation. (B,L,D)

### DAY 7: LYNN CANAL

Hike and kayak where the mighty Chilkat River meets the sea, in the shadow of snow-capped peaks and at the northern limit of Alaska's Inside Passage. (B,L,D)

### DAY 8: GLACIER BAY NATIONAL PARK

We spend the entire day amidst the coves, fjords, tidewater glaciers, and majestic mountains of Glacier Bay National Park. Search for mountain goats, harbor seals, Steller sea lions, and puffins. A native Tlingit interpreter and a National Park Service Ranger join us to share the local legends of the area. (B,L,D)

### DAY 9: ICY STRAIT/INIAN ISLANDS

See an abundance of Steller sea lions. Hike nearby islands, kayak, and search for whales in the rich waters of Icy Strait. (B,L,D)

### DAY 10: EXPLORING BARANOF OR CHICHAGOF ISLANDS

Kayak, hike, and explore where conditions are best and wildlife most active. Cap off the day with the Captain's farewell dinner. (B,L,D)

### DAY 11: SITKA/DISEMBARK/SEATTLE

After breakfast, disembark to visit picturesque Saint Michael's Russian Orthodox Cathedral then visit the Raptor Rehabilitation Center before transferring to the airport for flights to Seattle. (B)



### EXPEDITION DETAILS

**DATES:** 2018 Jun. 8\*, 18; Jul. 18\* 📷, 28 📷

📷 Photo Expeditions

\*Itinerary travels Sitka to Ketchikan making all the same stops.

### NATIONAL GEOGRAPHIC PHOTOGRAPHER

Travel with National Geographic photographer, **Rich Reid** on the Jul. 18 & Jul. 28, 2018 voyages.



### EXPLORE TONGASS NATIONAL PARK

Our Forest Service Special Use Permit for Tongass National Forest enables you to hike and kayak in wild and remote areas of Southeast Alaska.



Brown bear fishing.





*Clockwise from above: Wonder Lake reflects a stunning view of Mount McKinley as a canoer contemplates the scene; Dall sheep and grizzly bears are just some of the wildlife which make Denali National Park and Preserve their home.*







*North Face Lodge, Denali National Park.*

## ADD AN INLAND ADVENTURE— EXPLORE DENALI

Discover the wildness at the heart of Alaska by adding an inland exploration of Denali National Park to your coastal expedition. Choose from two ways to explore this grand National Park—both capped with rail rides on the historic Alaska Railroad through scenic countryside that is otherwise inaccessible.

### DENALI NATIONAL PARK FROM NORTH FACE LODGE

**PRE- OR POST-VOYAGE EXTENSION | 7 DAYS**  
Cost Per Person: \$6,190 Double; \$8,590 Single Occupancy

Begin and end your days at the idyllic North Face Lodge, located 89 miles into the heart of the Park. With unparalleled access to prime hiking and wildlife viewing, the lodge is a quiet retreat, accessible only to guests and staff. Dine on delicious, locally sourced cuisine, and enjoy nightly presentations that tell the story of Denali's natural and cultural history. Explore via private vehicles, or if you prefer a more personal exploration, you can hike a trail near the lodge, canoe on Wonder Lake, bike, or even spend an afternoon fishing.

▶ VISIT [WWW.EXPEDITIONS.COM/DENALI](http://WWW.EXPEDITIONS.COM/DENALI) FOR FULL DAY-BY-DAY ITINERARIES.



NEW SHIPS



## NATIONAL GEOGRAPHIC QUEST & NATIONAL GEOGRAPHIC VENTURE

**CAPACITY:** 100 Guests in 50 cabins.

**REGISTRY:** United States. **OVERALL LENGTH:** 238 feet.

Sister ships *National Geographic Quest* (launching 2017) and *National Geographic Venture* (launching 2018) will be the latest additions to our fleet. Designed with over 50 years of expedition heritage and built in the U.S.A., both ships will set a new standard in exploration and comfort.

**PUBLIC AREAS:** Global gallery; fitness center; LEXspa; lounge with full service bar and facilities for films and presentations; observation deck; mudroom with lockers for expedition gear, and a partially covered sundeck with chairs and tables. Our “open bridge” provides guests an opportunity to meet our officers and captain and learn about navigation.

**MEALS:** Served in single seatings with unassigned tables for an informal atmosphere and easy mingling. Breakfast is a wide selection buffet and dinner is served family-style. Menu emphasizes local fare.

**CABINS:** All cabins face outside with windows or portholes, private facilities and climate controls. Category 4 cabins have step-out balconies.

**EXPEDITION EQUIPMENT:** A fleet of 8 Zodiacs and 24 kayaks, Remotely Operated Vehicle (ROV), hydrophone, splashcam, underwater video camera, video microscope, paddleboards, snorkeling gear for all guests (where applicable).

**SPECIAL FEATURES:** Guest internet access, elevator, Lindblad-National Geographic certified photo instructor, a video chronicler and undersea specialist.

**WELLNESS:** The vessel is staffed by a Wellness Specialist and features a gym with an elliptical machine, treadmill, exercycles, handweights and resistance bands. Treatments in the LEXspa are available by appointment.



*Insets clockwise from top: (Artist's renderings): The lounge, with 270° views, is the hub of the expedition community; a spacious and open sun deck will provide unparalleled views.*





Left to right: (Artist's renderings) Category 5 cabin is our most spacious. Category 4 cabin with lower single beds converted to a Queen and a private balcony. Select cabins connect via an inside doorway.

**CATEGORY 1:** Main Deck #301-306 Cabins feature two lower single beds that can convert to a Queen, a writing desk and two portholes.

**CATEGORY 2:** Main Deck #307-315 Cabins feature two lower single beds that can convert to a Queen, a writing desk and two portholes.

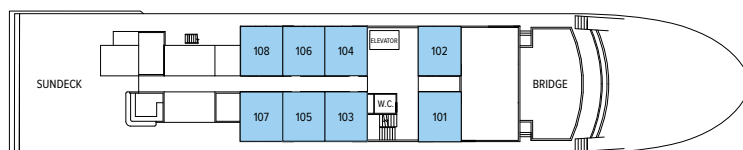
**CATEGORY 3:** Upper Deck #201-206 Cabins feature two lower single beds that can convert to a Queen, a writing desk and two large view windows.

**CATEGORY 4:** Upper Deck #207-229 Cabins feature two lower single beds that can convert to a Queen, a writing desk, sliding glass door, and small, private balcony.

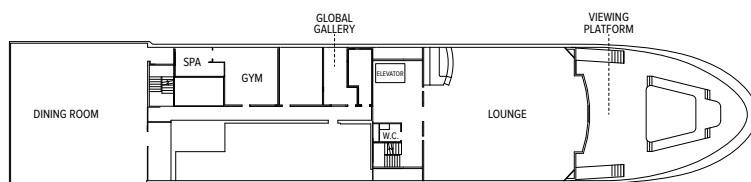
**CATEGORY 5 (SUITE):** Observation Deck #101-108 Cabins feature two lower single beds that can convert to a Queen, large view windows, an expanded bathroom, writing desk, ample storage space, and a convertible sofa bed to accommodate a third person.

**NOTE:** Sole Occupancy cabins are available in Categories 1 and 2 only. Third person rates are available in Category 5 cabins at one half the double occupancy rate.

**Connecting Cabins via internal doorway access:** Main Deck: #312-314, #311-315, #306-308, #305-307; Upper Deck: #224-226, #225-227



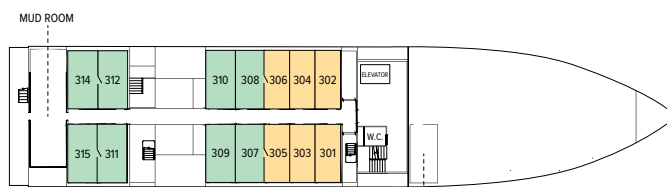
OBSERVATION DECK



LOUNGE DECK



UPPER DECK



MAIN DECK

Prices are per person, double occupancy unless indicated as solo.

ITINERARY	YEAR	CAT. 1	CAT. 2	CAT. 3	CAT. 4	CAT. 5 SUITE	CAT. 1 SOLO	CAT. 2 SOLO	ADVANCE PAYMENT	NOTE
Treasures of the Inside Passage: Alaska and British Columbia – Page 24	2018	\$9,990	\$10,640	\$11,190	\$11,990	\$12,890	\$14,990	\$15,960	\$1,000	Sample Airfares: Seattle/Juneau/Sitka/ Seattle or vice versa: Economy from \$200; Business Class from \$620.
Exploring Alaska's Coastal Wilderness – Page 28	2018	\$6,590	\$7,290	\$7,790	\$8,690	\$9,590	\$9,990	\$10,600	\$750	Sample Airfares: Seattle/Juneau/Sitka/ Seattle or vice versa: Economy from \$350; Business Class from \$800.





## NATIONAL GEOGRAPHIC SEA BIRD & SEA LION

**CAPACITY:** 62 guests in 31 outside cabins.

**REGISTRY:** United States.

**OVERALL LENGTH:** 152 feet.

**PUBLIC AREAS:** Our ships feature a library; global market; lounge with full-service bar and facilities for films, slide shows and presentations; observation deck; partially covered sundeck with chairs and tables, and LEXspa. Our “open bridge” provides guests an opportunity to meet our officers and captain and learn about navigation.

**MEALS:** Served in single seatings with unassigned tables for an informal atmosphere and easy mingling. Breakfast is a wide selection buffet and lunch is often served family style. Menu emphasizes local fare.

**CABINS:** All face outside with windows, private facilities and climate controls.

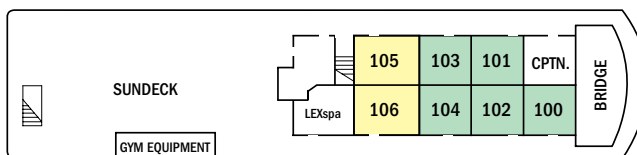
**EXPEDITION EQUIPMENT:** Bow camera, hydrophone, kayaks, Splash-Cam, underwater video camera, video microscope, and expedition landing craft.

**SPECIAL FEATURES:** Guest Internet access. A video chronicler and undersea specialist are on board all voyages.

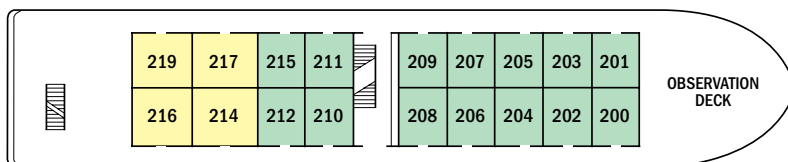
**WELLNESS:** The vessel is staffed by a wellness specialist and features exercise equipment, LEXspa and outdoor stretching area.



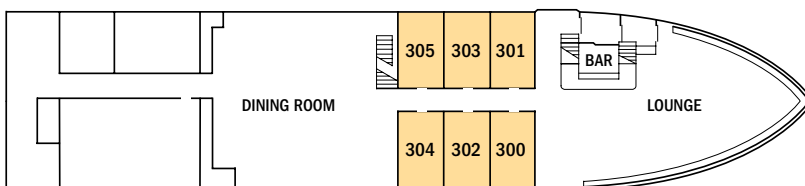
Guests enjoy the view of Glacier Bay National Park from the sundeck.



### BRIDGE DECK



### UPPER DECK



### MAIN DECK





**CATEGORY 1:** Main Deck #300-305 — Conveniently positioned between the dining room & lounge, these cabins feature two single lower beds, and a large view window.

**CATEGORY 2:** Bridge Deck #100-104; Upper Deck #200-212, 215 — These well-located cabins include two lower single beds & a view window.

**CATEGORY 3:** Bridge Deck #105, 106; Upper Deck #214, 216, 217, 219 — These cabins feature a seating unit with table and two large view windows. Upper Deck cabins include two lower single beds which can convert to a double bed and a pull-out single bed for a third person; Bridge Deck cabins include two lower single beds only.

**Note:** Sole Occupancy cabins are available in Categories 1 and 2 only. Third person rates are available in certain categories at one half the double occupancy rate.

**Shared Accommodations:** Shares can be arranged at the double occupancy rate in Categories 1 and 2 only.

*Photos (clockwise from left): Expedition ship National Geographic Sea Bird can access hard to reach locations; twin beds can be pushed together to form a double bed in Category 3 cabins on the Upper Deck; enjoy an assortment of wine selections while dining; a comfortable Category 2 cabin freshly redesigned.*

Prices are per person, double occupancy unless indicated as solo.

ITINERARY	YEAR	CAT. 1	CAT. 2	CAT. 3	CAT. 1 SOLO	CAT. 2 SOLO	ADVANCE PAYMENT	NOTE
Exploring Alaska's Coastal Wilderness – Page 28	2018	\$5,990	\$6,890	\$7,990	\$8,990	\$10,340	\$750	Sample Airfares: Seattle/Juneau/Sitka/Seattle or vice versa: Economy from \$350; Business Class from \$800.
Wild Alaska Escape – Page 30	2018	\$4,290	\$4,990	\$5,990	\$6,440	\$7,490	\$750	Sample Airfares: Seattle/Juneau/Sitka/Seattle or vice versa: Economy from \$350; Business Class from \$800.
A Remarkable Journey to Alaska, British Columbia & Haida Gwaii – Page 34	2018	\$10,900	\$12,450	\$14,530	\$16,350	\$19,860	\$1,500	Sample Airfares: Seattle/Sitka: Economy from \$200; Business Class from \$620.
Big Picture Alaska – Page 36	2018	\$8,990	\$10,490	\$11,890	\$13,490	\$15,740	\$1,000	Sample Airfares: Seattle/Ketchikan/Sitka/Seattle or vice versa: Economy from \$360; Business Class from \$700.



# TAKE ADVANTAGE OF OUR SPECIAL OFFERS

**SPECIAL OFFERS—BOOK BY SEPTEMBER 30, 2017:** Offers are available on select departures, and based on availability at the time of booking. On voyages with complimentary air offers, airfare is based on economy group flights that must be ticketed by Lindblad Expeditions. In the case that Lindblad's group or charter flights are no longer available at time of booking, we reserve the right to issue a credit. All offers are valid for new bookings only, subject to availability at the time of booking, and may not be combined with other offers and pre- and post-extensions. Call for details.

**BRINGING THE KIDS:** We believe sharing an expedition with your kids or grandkids is a life-enhancing experience. So take \$500 off for each child under the age of 18.

**TRAVELING AS A GROUP:** Save 5% when traveling as a group of 8 or more people. Take advantage of these great savings, while enjoying traveling with your friends and family. This savings is applicable to voyage fares only, and is not valid on extensions or airfare. Deposit, final payments, and cancellation policies for group travel vary from our regular policies.



## INCLUSIVE PRICING

We include just about everything you have the opportunity to do as part of your expedition aboard ship and ashore. The only things not included are those of a personal nature—internet usage, wellness treatments and other specialized arrangements.

### ABOARD SHIP

- ✓ All meals and nonalcoholic beverages
- ✓ 24-hour coffee, tea & soda on demand
- ✓ Hors d'oeuvres & snacks during nightly Recap
- ✓ Environmentally-friendly refillable water bottle
- ✓ Morning stretch classes with wellness specialist
- ✓ Fitness equipment
- ✓ Access to reference books and board games in the library
- ✓ The guidance and company of our expedition staff

### ASHORE

- ✓ Special access permits, park fees, port taxes
- ✓ Transfers to and from group flights
- ✓ The expertise of our expedition staff

### ACTIVITIES

- ✓ Expedition landing craft explorations
- ✓ Kayaking
- ✓ Presentations & photo instruction, including a special Alaska Whale Foundation presentation



## LOG ON TO EXPEDITIONS.COM

Find everything you need to dream, research or plan travel to 40+ destinations worldwide.

### Be part of our expedition community Join in! Here's how:

- ▶ Check out Expeditions Snapshots from guests - and upload your own on the expeditions.com homepage
- ▶ Check our daily blog: [expeditions.com/blog](http://expeditions.com/blog)
- ▶ Like us on Facebook: get inspired and chime in: [facebook.com/LindbladExpeditions](https://facebook.com/LindbladExpeditions)
- ▶ Subscribe to our videos on [youtube.com/lindbladexpeditions](https://youtube.com/lindbladexpeditions)
- ▶ Follow @LindbladEXP on Instagram and Twitter, and find Sven Lindblad on Instagram at @solindblad.





## RESERVATION INFORMATION

**Costs Include:** All accommodations aboard ships or in hotels per itinerary or similar, all meals and nonalcoholic beverages aboard ship, meals on land as indicated, air transportation where indicated as included, shore excursions, sightseeing and entrance fees, use of kayaks (where available), special access permits, transfers to and from group flights, tips (except to ship's crew), taxes and service charges, and services of our expedition staff.

**Not Included:** Air transportation (except where shown as included), extensions, passport, visa, immigration fees, meals not indicated, travel protection plan, items of a personal nature such as alcoholic beverages, e-mail, voyage DVD, laundry. Gratuities to ship's crew are at your discretion.

**Airfare:** For all programs, airfare is an additional cost unless otherwise indicated. Sample airfares are subject to change. We will gladly assist in making your air arrangements for a \$50 per person service fee.

**Complimentary Airfare:** On voyages with complimentary air offers, complimentary airfare is subject to availability at the time of booking, and is based on economy group flights that must be ticketed by Lindblad Expeditions. In the event complimentary flights are unavailable at time of booking, we reserve the right to issue an air credit. These offers are valid for new bookings only, and may not be combined with other offers.

### TERMS & CONDITIONS

**Reservations:** To reserve your place, an advance payment is required at the time of reservation. The per person advance payment amount varies by program, and is outlined in our brochures, as well as on our website. Payment is accepted by Visa, MasterCard, American Express, Discover, or by check. Receipt of your initial payment indicates your acceptance of our complete Terms and Conditions. We require written notice at the time of reservation for any physical condition, diet, or treatment requiring special attention. Once your reservation is confirmed, we urge you to use your personalized online account for important information to help you prepare for your voyage. Managing your documents online will facilitate fast and accurate communication, and allow you to provide us with pertinent details we require, in order to complete your reservation. Your online account gives you access to your Expedition Guide, which includes valuable information specific to your voyage. You can also use your online account to make easy payments, view recommended flights and reading material, packing list, and so much more.

**Final Payment:** Final payment is due 90 days prior to departures.

**Entry and Visa Requirements:** All guests are advised to verify travel documents (passport/transit visa/entry visa) for the country through which they are transiting and/or entering. Reliable and most current information regarding international travel can be found by contacting the consulate/embassy of the country(s) you are visiting or transiting through. We will not be responsible if you are denied entry or transit into a Country, if you are unable to provide valid documents as per the Country's requirement.

**Travel Protection Plan:** We strongly recommend that you take advantage of our Travel Protection Plan. This plan offers comprehensive coverage to protect you from cancellation fees, costs incurred due to trip delays/interruption, and damaged or lost baggage, and provides medical assistance and evacuation during your travels. Our Travel Protection Plan is available for U.S. and Canadian residents only, and may be purchased any time prior to final payment due date. Travel Protection premiums are non-refundable once plan is purchased.

**Smoking Policy:** Smoking is allowed only in designated outdoor areas.

**Responsibility and Other Terms & Conditions:** Among other things, limitations of Lindblad Expeditions' and the National Geographic Society's liability for loss of property, injury, illness or death during the voyage will be provided to all

guests on the ship's ticket sent prior to departure, and are also available on our website at [www.expeditions.com/terms](http://www.expeditions.com/terms), or upon request. By registering for a trip, the guest agrees to all such terms and conditions.

**Note:** Itineraries and prices listed in this brochure are as of publication date, and are subject to change. The company reserves the right to impose surcharges based on increases in the company's actual cost of fuel or other unexpected expenses.

CANCELLATION POLICY	
Number of Days Prior to Expedition Start	Per Person Cancellation Fee
120 or more days	\$350
119–90 days	Advance payment cost
89–60 days	25% of total fare
59–45 days	50% of total fare
44–0 days	No refund

\$350 will be rewarded in the form of a Lindblad Expeditions Travel Certificate. This cancellation policy applies to expeditions, extensions (with the exception of Denali), as well as all other additional services. The effective date of a cancellation will be the date on which your cancellation notice is received. Any revisions you make within the cancellation penalty period, such as departure date or choice of voyage, are subject to cancellation fees.

Note: Airline cancellation policies vary by carrier, as well as the type of fare used to issue your ticket.

Our group cancellation policy is listed in the Terms and Conditions section of our website, or you may call us for details. We stress the importance of purchasing a travel protection plan to protect yourself from fees in the event you need to cancel your reservation.

For Denali Extensions	
Number of Days Prior to Expedition Start	Per Person Cancellation Fee
120 or more days	\$550
119–90 days	60% Denali cost
89–0 days	100% of Denali cost

\$550 deposit is due at time of booking the extension. Additional 60% of total cost is due 120 days prior to the departure date on your voyage. Final payment is due 90 days prior to departure.

### United States Tour Operators Association \$1 Million Travelers Assistance Program



Lindblad Expeditions, as an Active Member of USTOA, is required to post \$1 Million with USTOA to be used to reimburse, in accordance with the terms and conditions of the USTOA \$1 Million Travelers Assistance Program, the advance payments of Lindblad Expeditions customers in the unlikely event of Lindblad Expeditions bankruptcy, insolvency or cessation of business. Further, you should understand that the \$1 Million posted by Lindblad Expeditions may be sufficient to provide only a partial recovery of the advance payments received by Lindblad Expeditions. More details of the USTOA Travelers Assistance Program may be obtained by writing to USTOA at 345 Seventh Avenue, Suite 1801, New York, New York 10001, or by email to [information@ustoa.com](mailto:information@ustoa.com) or by visiting their website at [www.USTOA.com](http://www.USTOA.com).

We are proud to be a Founding Member of



Adventure Collection—a family of the world's most trusted and experienced active travel companies. Each member company of Adventure Collection is dedicated to enriching the lives of its guests and to giving back to the areas in which it travels. For more information visit [www.AdventureCollection.com](http://www.AdventureCollection.com).



## TRAVEL PLANNING WITH A DIFFERENCE

Half of travel planning is learning what you don't know and generating questions. The other half is getting answers.

When you call **1.800.EXPEDITION**, you can ask for any one of our Expedition Specialists who have been on our Alaska expeditions. They are full members of the Lindblad Expeditions team—students of the natural world and born explorers, not trained call center telemarketers.

**SO WHY NOT TAKE ADVANTAGE OF THEIR EXPERTISE?** Don't hesitate to call with your questions—they're equipped to provide answers based on their knowledge and personal experience.

Ask them about Alaska, how we explore there, our ships, our itineraries, and more. We think you'll find the conversation rewarding.

©2017 Lindblad Expeditions. Lindblad Expeditions and the Eye are the trademarks of Lindblad Expeditions. All rights reserved.

NATIONAL GEOGRAPHIC and the Yellow Border are the trademarks of the National Geographic Society. All rights reserved.

Photo Credits: Alamy Stock Photo, Ken Carlson, Rab Cummings, Jennifer Davidson, Mike Greenfelder, Doug Gould, Eric Guth, Justin Hofman, Ralph Lee Hopkins, Jeff Litton, Alberto Montaudon Ferrer, Jeff Mauritzen, Niebrugge Images/Alamy Stock Photo, Carlos J. Navarro, Michael S. Nolan, Paul North, Gretchen Pederson, Rich Reid, Marco Ricca, Krista Rossow, Susan Seubert, Paul Souders, David Vargas.

**For Reservations: Contact your travel advisor or Lindblad Expeditions**

**1.800.EXPEDITION**  
(1.800.397.3348)

**Reservation Hours:**

**Monday - Friday 9am - 10pm ET,  
Saturday & Sunday 10am - 5pm ET**

**Lindblad Expeditions, Inc.**

**96 Morton Street, New York, NY 10014**

**Phone: 212.261.9000**

**Email: [explore@expeditions.com](mailto:explore@expeditions.com)**

**For additional information and online reservations, visit us on the Web:**

**[www.expeditions.com](http://www.expeditions.com).**





96 Morton Street  
New York, NY 10014

PRSR STD  
U.S. POSTAGE  
PAID  
LINDBLAD  
EXPEDITIONS

Account Number:



Expedition Code:

2AKCFUA8

1.800.EXPEDITION | WWW.EXPEDITIONS.COM

Printed on 10% recycled content paper with soy-based inks. We recommend that you pass this along for others to enjoy or recycle.

AKC-068

FREE ROUND TRIP AIRFARE ON SELECT ALASKA DEPARTURES. SEE PAGE 44 FOR DETAILS.

### SELECTED HONORS & AWARDS

- » Condé Nast Traveler’s Readers’ Choice Award—Top Small Ship Cruise Lines, 2016, 2015, 2014
- » Virtuoso “Best VAST Partner” Award, 2016
- » Cruise Critic Editor’s Pick Awards “Best for Adventure,” 2016, 2013, 2012, 2011, 2010
- » 2016 World Tourism Award
- » Andrew Harper’s Reader Choice Awards: Best Cruise Lines, 2016
- » Town & Country Cruise Awards: Best for Families and Onboard Activities, Expedition Cruises, 2016
- » Porthole Cruise Magazine Readers’ Choice Awards: Best Expedition Cruise Line, 2015
- » Tourism Cares Travel Philanthropy Awards: Legacy in Travel Philanthropy, 2015
- » Condé Nast Traveler’s “Gold List,” 2013, 2009, 2008, 2007, 2006, 2005
- » Virtuoso “Sustainable Tourism Leadership-Supplier” Award, 2013
- » Travel + Leisure “World’s Best” Award for Small-Ship Cruise Lines, 2013, 2012, 2011, 2010, 2009, 2008
- » Travel + Leisure “World’s Best for Families” Award for Small-Ship Cruise Lines, 2012, 2011, 2010, 2009
- » Climate Champion Award to Sven Lindblad by Clean Air-Cool Planet, 2009

▶ GO TO [WWW.EXPEDITIONS.COM/AWARDS](http://WWW.EXPEDITIONS.COM/AWARDS) FOR AN EXTENDED LIST.



Guests cruise among spectacular blue icebergs in Endicott Arm.