



ALASKA 2018

THE INSIDE PASSAGE & COASTAL EXPEDITIONS

ABOARD NATIONAL GEOGRAPHIC SEA LION,
SEA BIRD & QUEST | 2018



Lindblad
Expeditions



NATIONAL
GEOGRAPHIC™



Lindblad
Expeditions



NATIONAL
GEOGRAPHIC™

Lindblad Expeditions and National Geographic have joined forces to further inspire the world through expedition travel. Our collaboration in exploration, research, technology and conservation will provide extraordinary travel experiences and disseminate geographic knowledge around the globe.

DEAR TRAVELER,

It's almost unimaginable for me, personally, to believe it has been more than 35 years since we first started expeditions in Alaska. I'll never forget doing our original reconnaissance—soaring in a float plane over such a wild landscape of dense forest, massive glaciers, and endless waterways. We spotted brown and black bears foraging the shoreline, pods of humpback whales, and rafts of sea otters. At one point, I spotted what I thought was a small whale but, as we descended to get a better look, it turned out that a bald eagle had gotten its talons stuck in a salmon too large to fly off with. It was comical to watch this bold bird essentially “wing-rowing” to shore in order not to lose the prize. Southeast Alaska is simply magical.

We are always looking to enhance that captivating excitement of exploring Alaska's magnificent wilds. And this summer we proudly added the *National Geographic Quest* to our fleet. The feedback has been great; guests were thrilled with the intimate, in-depth and deeply “inside” Alaska experience they've had aboard. It was a uniquely rewarding season for both us and our guests.

Now, for the first time in decades, we are able to satisfy the demand for our classic Alaska expedition, and for our longer coastal voyages, a few of which enter the Inside Passage, as well. *Quest* joins our beloved *National Geographic Sea Lion* and *National Geographic Sea Bird*, offering you the luxury of choice. But the question naturally arises: Which ship should you choose? Well, it largely depends on where you want to go. Each ship is adapted to one or more of our five different itineraries—as you'll see ahead—allowing you to go into parts of wild Alaska you could otherwise never see.

Whichever ship you choose you will share the journey with our renowned expedition teams. They will ensure that you see, do and learn more than you ever imagined possible. You'll virtually explore the surprising Alaskan undersea thanks to our undersea specialist. You'll take your best photos ever with the help of a National Geographic photographer, aboard select departures, or a certified photo instructor, aboard every departure. And starting next summer, kids and teens can develop the mindset of an explorer through our brand-new National Geographic Global Explorers program, available on all three ships. (See page 13 for details.)

There is no better way to experience pure American wildness than on one of our five Alaska expeditions. Join us in 2018 and I promise you will make memories to last a lifetime.

All the best,



Sven-Olof Lindblad



“I will never forget my first time aboard National Geographic Sea Bird. It was like a childhood dream come true—what I imagined it would be like to be aboard the Calypso with Jacques Cousteau and his team.”

—ANDREW EVANS, NATIONAL GEOGRAPHIC TRAVELER
CONTRIBUTING EDITOR, AUTHOR OF *THE BLACK PENGUIN*

▶ WATCH ALL THAT YOU CAN EXPERIENCE ON AN AUTHENTIC LINDBLAD NATIONAL GEOGRAPHIC EXPEDITION IN ALASKA. VISIT [EXPEDITIONS.COM/ALASKAVIDEO](https://www.nationalgeographic.com/expeditions.com/alaskavideo)



GO DEEP INSIDE THE REAL ALASKA

See the map on page 23, and you'll see why Alaska's Inside Passage isn't called the Outside Passage. Comprised of one thousand islands and a vast network of channels, bays and fjords, the inside passage can only be explored deeply by expedition ship.

Our nimble ships, *National Geographic Quest* and *National Geographic Sea Bird* and *Sea Lion* take you deep inside the Inside Passage. And their decks are front row seats for authentic Alaska. Incredible whale sightings—from breaching to the co-operative feeding behavior only seen in Southeast Alaska. Plus, majestic bears, bald eagles, calving glaciers, old-growth forests, indescribable vistas. And fascinating First Nation communities that have called the Inside Passage home for centuries before the arrival of the 19th-century explorers. Our ships are also perfect platforms for exploration. We can get in deep where no docks or other infrastructure exist; and the complete suite of cool tools for exploration aboard enable you to explore the quiet inlets and coves far beyond the reach of the big ships.



We're also not tied to port times like the big ships. We have the flexibility to stop and linger should we happen upon a pod of orcas circling prey—giving you an incredible view of the powerful, often unexpected, moments only nature can provide.

Clockwise from top left: National Geographic Sea Bird sails into a fast-moving channel; bald eagle; Sea Bird is dwarfed by big ships in Juneau. We're only in port to embark guests before heading for pristine wildness.

ACTIVELY EXPLORING EVERY DAY & EVERY WAY

Every day in Alaska brings new adventure and an array of active options. Start your morning with an energizing hike through a lush, towering forest, or choose a slower walk, with time for your naturalist to share the unique wonders of the native flora. Later on, approach a calving glacier by Zodiac, try your hand at stand-up paddleboarding, visit an ancestral First Nations village site, or kayak along wildlife-rich shorelines keeping watch for swooping bald eagles, and gregarious sea lions. When you prefer, stay aboard to read or enjoy a wellness treatment in the spa. There's never one-size-fits-all scheduling here: choose your activities, activity levels, and staff members to join daily.



Clockwise from top right: Guests witness a massive calving with a 200-foot-tall splash at Dawes Glacier; a mother and daughter kayaking near National Geographic Sea Bird in Misty Fjords National Monument; walking through Sitka National Historic Park coastal trail; Lindblad-National Geographic certified photo instructor assists guest.



THE RICHEST WILDLIFE AND WHALE WATCHING EXPERIENCES



Orca whale in Tracy Arm-Fords Terror Wilderness.

Drawing on 35 years of knowledge exploring the region, we know where to position our ships, in the narrow, fast-moving channels and along undersea shelves, where the humpbacks converge in the spring and summer to feed, ensuring more encounters. Our skill in timing, paired with our nimble, perfectly sized ships, means we can navigate perfectly to be “there” when whales are—creating amazing observation and photo ops others just cannot deliver. In addition, researchers from the

Alaska Whale Foundation come aboard to share their knowledge and latest findings, and to provide insight into the humpback behavior the image at right illustrates. And if the opportunity arises, our naturalists may even drop a hydrophone to reveal the whales’ communication, or give you a whale’s-eye view through exclusive footage shot by National Geographic’s Crittercam team.

“When I think of Alaska and my expectations, I’d have to say it went way beyond. I expected to see some glacier calving but not one after another after another. I expected to see a bald eagle but not in abundance. I wanted to photograph humpback whales and once again it has been taken to the next level. We got to observe humpback whales bubble-net feeding, for as long as they were there, and that was an absolute dream. This has been way beyond what I thought it would be.”

—KEN CARLSON, ALASKA GUEST



▶ SEE WHAT IT’S LIKE AT [EXPEDITIONS.COM/WHALES](https://www.expeditions.com/whales)



*Clockwise from above:
There's a wealth of wildlife
to be found in Alaska and
breaching humpback whales
put on quite a show; bald
eagle; mountain goat on a cliff
face; and brown bears with a
fresh catch.*

An underwater photograph showing a dense forest of jellyfish with long, thin, white and yellowish tentacles drifting in the water. In the lower right corner, a diver is visible, illuminated by a bright light source, possibly a flashlight or a camera light, creating a strong lens flare effect. The water is a deep, clear blue-green color.

EVEN EXPLORE ALASKA'S VIVID UNDERSEA

See more of Alaska than you ever imagined. No other travel company offers this kind of look at the vivid and surprising undersea life found in Alaska. On every departure your undersea specialist will don special cold-water diving gear to explore the depths of the undersea to shoot video of the otherworldly creatures, which you'll see on TV screens from the comfort of the lounge. See the vast kelp forests swaying in the currents and discover strange and wonderful marine life: anemones, jellies, rockfish and unusual life forms that are only found well beneath the water's surface. Watch as your undersea specialist's bright lights dance across the seafloor, revealing the brilliant purples and greens.



Left: A diver observes how the nutrient-rich water feeds the vibrant, seldom-seen undersea, including this lion's mane jellyfish. Above: A close-up of a yellow and orange-tipped nudibranch.

"We found ourselves in a forest of giant plumose anemones...among them hundreds of species of marine invertebrates—each more vibrant than the last. Hermit crabs whose shells had been fully engulfed by sponges, a rare butterfly crab, and six species of sea stars—including the largest on Earth. Sharing the images with everyone aboard brought excitement and shed light on the seldom-seen underwater world."

—JEFF LITTON, UNDERSEA SPECIALIST



▶ WATCH A FASCINATING PACIFIC OCTOPUS ENCOUNTER AT [EXPEDITIONS.COM/OCTOPUS](https://www.expeditions.com/octopus)

THE PERFECT PLATFORMS TO



This page, clockwise from top: Undersea specialist Paul North prepares to send a compact Remotely Operated Vehicle (ROV) out into the water. The ROV can go hundreds of feet deeper than a scuba diver and captures parts of the undersea that are as unexplored as the moon; guests on the bow get close enough to feel the waterfall's spray on their face (and their cameras!); take a flightseeing excursion for thrilling aerial views of the region's glaciers; kayakers spot a brown bear on shore.

EXPLORE WILD ALASKA

The key to our expedition style is how we view our ships: they're tools for getting you to, and deeply into, the remarkable places we explore. In turn, all our ships—*National Geographic Sea Bird*, *Sea Lion* and *Quest*, are equally equipped with a roster of exploration tools. A fleet of Zodiacs on each allows us to explore, and land, in pristine wild places where no infrastructure of docks and ports exists. A fleet of kayaks and paddleboards enable you to get out on personal adventures. In addition, ours are the only ships in Alaska with an undersea specialist and undersea



video technology aboard—to provide video presentations of the world beneath the ship for all to enjoy in brilliant HD from the comfort of the ship's lounge. *Quest* is also equipped with an ROV (Remotely Operated Vehicle) capable of exploring depths of up to 1,000 feet. Other advantages of our ships include: spacious decks ideal for fresh-air wildlife-watching with your naturalists; and generous windows that bring in the jaw-dropping scenery—to keep you constantly connected everywhere on board to the iconic Alaska you came to experience.

On Quest's (shown above and at right) rear deck, twin marina platforms are used to disembark guests quickly and safely—get right to exploring with no idle waiting.





Clockwise from top: Guests of all ages enjoy kayaking in the blue waters of Alaska; a young guest holds a chunk of glacier ice in Endicott Arm, Southeast Alaska; naturalist Julia Huggins shows an inquisitive Global Explorer what lichens look like under a microscope; as part of the Global Explorers program, kids and teens can earn their Zodiac “driver’s license.”

NEW FOR 2018: NATIONAL GEOGRAPHIC GLOBAL EXPLORERS

With 35 years of experience exploring Alaska, we've learned it makes for an amazing family getaway—the wild places in this region offer boundless opportunities for kids and teens of all ages to engage in rewarding activities that help them develop the attitudes, skills, and knowledge of an explorer. Our exclusive family program, which debuted in Galápagos in 2017, is available aboard all Alaska expeditions starting in Summer 2018. Developed in conjunction with National Geographic Education, this unique exploration-based program provides an unforgettable 'smart fun' experience for any young explorer who chooses to participate.

Guests under 18 are invited to:

- ✓ **Have fun!** They'll take part in all kinds of cool activities—like learning about glaciers by making ice cream sundaes, or using glacial ice to paint water colors
- ✓ **Benefit from National Geographic certified field educators:** They'll optimize daily learning opportunities and fun for all ages
- ✓ **Connect with nature:** Kids and teens have direct contact with wildlife and wonders, on land and in the sea
- ✓ **Learn to be a storyteller** Kids and teens will be encouraged to use their creativity—with photos, videos, music, writing, drawing and more, to tell stories about all they'll see and do
- ✓ **Develop their observation skills:** Daily activities will prompt kids to watch out for specific wildlife, and record observations in their Field Notebook.

And more rewarding news for families: Our brand-new ship, the *National Geographic Quest*, is ideal for family travel. She offers ample room for kids to explore nooks and crannies, expend energy, and feel a sense of autonomy while remaining safe within the secure confines of the ship. Connecting cabins in Categories 1, 2 and 3 make keeping the clan together simple and satisfying.



“This program gives them a great opportunity to learn everything about the web of life, the importance of the ocean, the importance of interconnections between organisms, and they’re doing all that while having fun!”

—MICHELE M, PARENT



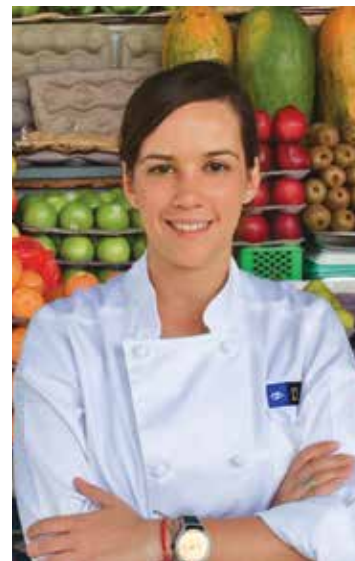
EXPERIENCE ALASKA WITH ALL YOUR SENSES

Whether it's satisfying your appetite kindled by active exploration in the exhilarating fresh air or keeping your spirit of anticipation whetted while aboard, the culinary side of our expedition team is equal to the challenge. Much of the food prepared is sourced locally whenever possible from sustainable providers, with ingredients and flavors that reflect Alaska's wild bounty. Both breakfast and lunch are served buffet-style with plenty of variety to choose from, while dinner is plated and served by our gracious wait staff. And since seating is open, allowing you to choose where to dine, mealtimes are more than opportunities to eat well, they're also a chance to join naturalists, guest speakers, ship's officers and fellow guests to engage in stimulating conversation and gain deeper insight into the nature and culture of the region.



“Alaska’s tonic air combined with the time we spend on deck or actively engaged in exploring works up a healthy appetite. And there’s no better place to satisfy it than in Alaska, where our commitment to sustainable seafood rewards us every day. Our chefs have their choice of local seasonal fish varieties, from day boat haddock and line-caught salmon to fresh lobster, all sourced from providers we’ve known and worked with for years. And they provision produce from sustainable local growers, too. Fresh bread is baked aboard for breakfast, lunch and dinner, as are breakfast pastries and desserts. Berry season is celebrated aboard, for sure! Our culinary focus and skill ensures you will experience Alaska with all your senses.”

—ANA ESTEVES, MANAGER HOTEL OPERATIONS, LINDBLAD EXPEDITIONS



Opposite page: Head Chef Eric Seabury shows off fresh Dungeness crabs to be served for dinner on board; weather permitting, breakfast is offered al fresco on the deck.

This page, clockwise from above: Ana Esteves; an example of a delicious plated meal, all food served aboard is fresh, local and sustainable; a delicious dessert; enjoy fresh berries in season.





THE LUXURY OF COMFORT

National Geographic Quest provides a welcoming home in the wilds of Alaska. Modern, sophisticated and inviting, both ships' feature 50 cabins, including eight suites, six connecting cabins ideal for families and groups, and 22 cabins with step-out balconies that provide a non-stop visual feast. And all cabins are equipped with Ethernet connections and plugs for laptops, phone or camera chargers. While you'll find the Ship's interiors elegant, life aboard is, as always, casual and informal.

▶ TO LEARN MORE ABOUT OUR NEW SHIPS, VISIT [EXPEDITIONS.COM/QUEST](https://www.expeditions.com/quest)





Opposite page, from top: Captain Andrew Cook leads a champagne toast during Quest's inaugural voyage through Southeast Alaska July 2017; Category 4 cabin; Category 5 cabin.

This page, from top: Unassigned tables make for an informal atmosphere and easy mingling in the dining room; guests gather on deck as Quest heads deep into Alaska's wilds; the ship's lounge is a comfortable retreat after a day of active adventure; uniquely designed for the best possible wildlife viewing experience, Quest's unobstructed bow is one of the most frequented spots on the ship. It offers ample room for everyone to comfortably observe and capture stellar photo ops.



SHARE YOUR EXPEDITION WITH THE BEST TEAM IN ALASKA



Learn, see, and do more by exploring with experts who know the region best. Share the adventure with a team of naturalists, a Lindblad Expeditions-National Geographic certified photo instructor, an expedition leader, and a video chronicler. Since personal attention is important, we explore with one staff member for every 10 guests, the largest expedition team and best guest-to-naturalist ratio in Alaska. And since you are never assigned to a staffer, you're able to gravitate towards individuals whose interests mirror your own—photography, kayaking, the undersea, whales, botany, or something different daily. Benefit from a greater variety of expertise, perfectly sized groups on hikes, varied perspectives, and engaging personalities.

 [LEARN MORE AT WWW.EXPEDITIONS.COM/EXPERTS](http://WWW.EXPEDITIONS.COM/EXPERTS)





Above: Join our captains and officers on the Bridge anytime to learn the nuances of navigation.

Opposite page, left to right: Naturalist/certified photo instructor Michael S. Nolan transforms a typical nature walk with expert insight and eye-opening photo advice; greet the morning with scenic views and an energizing yoga session led by your wellness specialist.

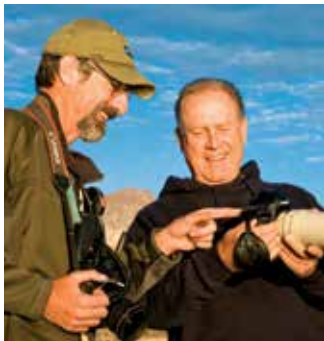


At right, clockwise from upper left: Some expedition team members for the 2018 season include undersea specialist Paul North, wellness specialist Alexis Mutchler, expedition leader John Mitchell, and naturalist Jared Funderburk.

Below: Local rafting guides ensure an exhilarating experience on the Chilkat River.



EXCLUSIVELY OURS: AN EXPEDITION P



Travel and photography go together. And our program helps you make the most of Alaska's incredible photo ops. Our program puts Lindblad-National Geographic certified photo instructors on all of our Alaska departures to assist you with camera settings, the basics of composition, and much more. They're excellent photographers, and naturalists,

who can teach you to observe and understand wildlife behavior so you aim at just the right time and place for a great shot. And, on select departures during the season, top National Geographic photographers join us to inspire and share insights and their work over the years. Everyone, at every skill level, can go home with shots they're proud to share. Explore with us and enjoy these unique benefits of our exclusive Expedition Photography program:

- ✓ **A Lindblad-National Geographic certified photo instructor on every departure**
- ✓ **A pre-expedition private webinar for booked guests—with gear recommendations, shooting and travel tips, plus a Q & A with our Director of Expedition Photography, Ralph Lee Hopkins**
- ✓ **Customized online gear recommendations & special savings from B&H Photo Video**
- ✓ **And much, much more!**



**NATIONAL
GEOGRAPHIC**

**MEET SOME OF THE NATIONAL GEOGRAPHIC
PHOTOGRAPERS TRAVELING WITH US THIS SEASON**



KRISTA ROSSOW

Wild Alaska Escape

National Geographic Sea Bird

May 29 & June 3, 2018

See page 30



FLIP NICKLIN

**Exploring Alaska's Coastal
Wilderness**

National Geographic Quest

June 3 and 10, 2018

See page 26



RICH REID

Big Picture Alaska

National Geographic Sea Bird

July 18 & July 28, 2018

See page 32



KEN GARRETT

**A Remarkable Journey to Alaska,
British Columbia & Haida Gwaii**

National Geographic Sea Bird

Aug. 27, 2018

See page 36

▶ READ BIOS AT [EXPEDITIONS.COM/EXPEDITION_TEAM](https://www.lindblad.com/expeditions.com/expedition_team)

HOTOGRAPHY PROGRAM

TRAVEL WITH A PURPOSE: DESIGNATED PHOTO EXPEDITIONS

If you enjoy making images, there's nothing more rewarding than being able to lose yourself in the joy of it, with ideal conditions set up for you, and like-minded others to share the experience. Immerse yourself in the world of professional travel and wildlife photography and discover Alaska from inside your lens. All skill levels are welcome—our photo experts can meet you wherever you are on your journey. And since Photo Expeditions offer the same opportunities to actively explore as our other departures, photographers' travel companions can be fully engaged while photographers miss out on nothing. Book a Photo Expedition and enjoy all the benefits from the previous page, plus:

- ✓ **Exclusive opportunities to shoot with, and learn from, a top National Geographic photographer, plus at least two Lindblad-National Geographic certified photo instructors**
- ✓ **Special outings timed to take advantage of the best light**
- ✓ **Hikes & Zodiac cruises conducted at the ideal pace for photographers**
- ✓ **Onboard seminars, photo presentations, slideshows and sharing events we call "laptop galleries"**



CHOOSE FROM FIVE DIVERSE IT

Our mission is to discover the inner reaches, where otters float past our kayaks, bears forage the shores, and glaciers calve. To go where only our nimble shallow-draft vessels can. To roam freely, searching for the heart and soul of Alaska in its road-less communities, and in Haida lands, which we are privileged to visit. Choose any of our itineraries, and you've chosen well.

FOCUS ON THE INSIDE PASSAGE

EXPLORING ALASKA'S COASTAL WILDERNESS | 8 DAYS/7 NIGHTS

Time-tested over 35 years our classic Alaska expedition itinerary delivers unparalleled experiences; and now, the luxury of choice: the new 100-guest *National Geographic Quest*, or the 62-guest *National Geographic Sea Lion*. See pages 24-27.

WILD ALASKA ESCAPE | 6 DAYS/5 NIGHTS

Hike! Bike! Raft! Kayak! This highly active Alaska expedition aboard the 62-guest *National Geographic Sea Bird* immerses you (and your active family) in Alaska's wild beauty, including Haines, Alaska's "adventure capital." A larger, active naturalist staff and small groups enable customized explorations. See pages 30-31.

BIG PICTURE ALASKA | 11 DAYS/10 NIGHTS

Explore the Inside Passage from top to bottom aboard the 62-guest *National Geographic Sea Bird*. From the glacially carved cliffs of the southern Misty Fjords all the way to the northernmost reach, Haines—Alaska's adventure capital. Use your camera as a tool for going deeper, observing even more. See pages 32-33.



EXPLORING ALASKA'S
COASTAL WILDERNESS

WILD ALASKA ESCAPE

BIG PICTURE ALASKA

INERARIES



EXPERIENCE THE COAST AND INSIDE PASSAGE

ALASKA, BRITISH COLUMBIA & HAIDA GWAII | 15 DAYS/14 NIGHTS

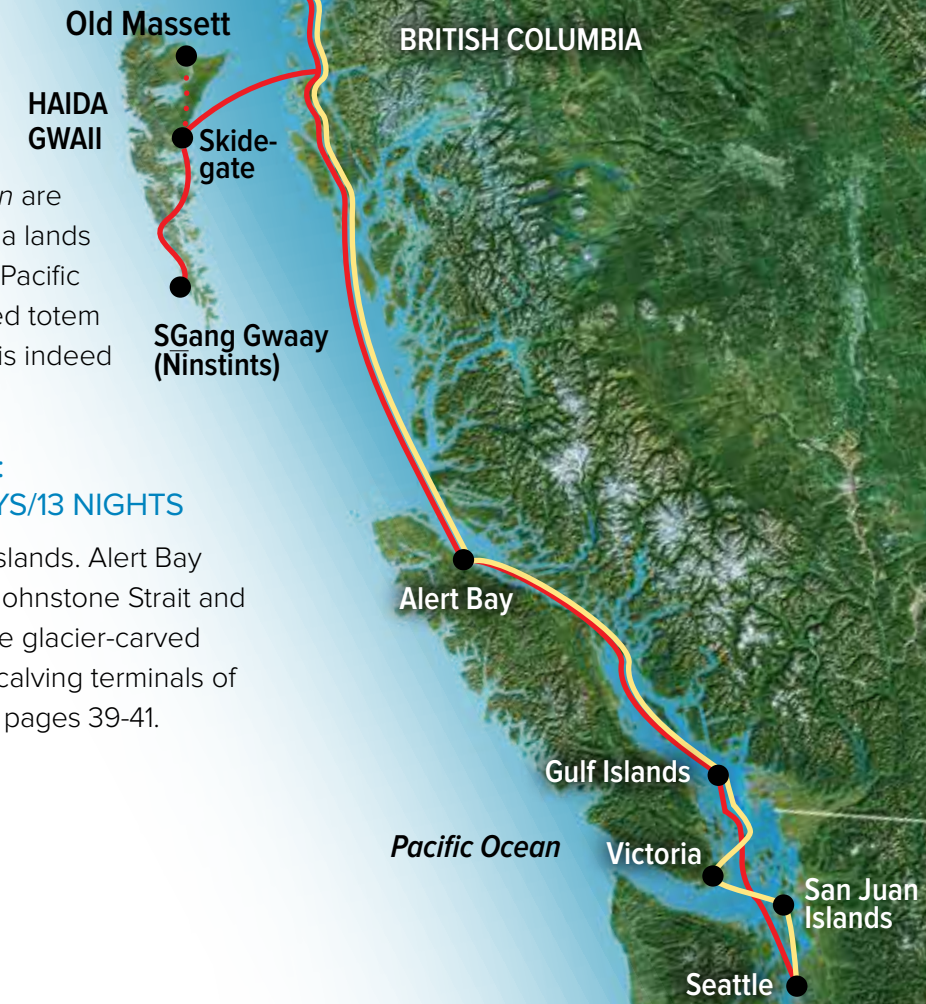
National Geographic Sea Bird and *Sea Lion* are the only U.S. vessels permitted to visit Haida lands in over 20 years. The Haida are legendary Pacific coast artists and artisans. To see the silvered totem poles at ancestral SGang Gwaay Llnagaay is indeed a privilege. See pages 34-37.

TREASURES OF THE INSIDE PASSAGE: ALASKA & BRITISH COLUMBIA | 14 DAYS/13 NIGHTS

The orca-studded waters of the San Juan Islands. Alert Bay and the Kwakwaka'wakw people. Historic Johnstone Strait and British Columbia's regal Inside Passage. The glacier-carved cliffs of Misty Fiords, and the thunderously calving terminals of Glacier Bay. Discover these and more. See pages 39-41.

 ALASKA, BRITISH COLUMBIA & HAIDA GWAII

 TREASURES OF THE INSIDE PASSAGE:
ALASKA & BRITISH COLUMBIA





Harbor seals hauled out on icebergs in South Sawyer Glacier in Tracy Arm.



EXPLORING ALASKA'S COASTAL WILDERNESS

Our Classic Expedition, An Ideal Introduction To Alaska

For over 35 years, our classic Alaska expedition has delivered the iconic experience travelers yearn for: from protected coves where sea otters congregate and river rapids where bears fish for salmon, to the rich channels where whales feed. Now, along with our beloved *National Geographic Sea Lion*, the new 100-guest *National Geographic Quest* helps us meet the demand for authentic expedition travel. Both provide the same robust experience of Southeast Alaska, the same adventurous spirit of exploration and an opportunity to choose the style that suits you. Where the *Quest* offers more spacious cabins, *Sea Lion* offers greater intimacy and esprit de corps. The important point about the Alaska experience we provide, however, is this: our ships are tools, designed to bring you into the closest, most exhilarating contact with Alaska's wildness and wonders possible. Our captains will take you where no big ships can go, and our expert naturalists will reveal an Alaska few get to see.



Orca whale sighting in the Inian Islands.

EXPLORING ALASKA'S COASTAL WILDERNESS

8 DAYS/7 NIGHTS—ABOARD NATIONAL GEOGRAPHIC SEA LION AND NATIONAL GEOGRAPHIC QUEST

PRICES FROM: \$5,990 to \$10,600 (See pages 44-47 for complete prices.)

Experience the remarkable beauty of Southeast Alaska on a voyage aboard the *National Geographic Sea Lion* or *Quest* into a land of mist-shrouded fjords, tidewater glaciers, and islands teeming with wildlife. Search for killer whales and humpback whales, explore the coast by kayak, spend a full day in Glacier Bay National Park, and learn about Alaska's rich Tlingit heritage.

EXPEDITION HIGHLIGHTS

- ▶ Kayak into protected coves and look for sea otters, seabirds, and harbor seals.
- ▶ Hike through lush forests to cascading waterfalls, and ride an expedition landing craft into secluded inlets to look for brown bears.
- ▶ Meet with our conservation partners from the Alaska Whale Foundation to learn about the local whale population, and get a first-hand perspective on Alaska's indigenous people from a Tlingit cultural interpreter.
- ▶ Discover Alaska's seldom-seen, vibrant marine life revealed by our undersea specialist.

EXPERIENCE & EXPERTISE



Our unparalleled 6-person expedition team aboard the *Sea Lion* or 10-person team aboard the *Quest* is key to an in-depth experience.

An expedition leader, 4 naturalists (depending on the ship), a Lindblad-National Geographic certified photo instructor and undersea specialist, plus a wellness specialist and video chronicler all contribute to your understanding of Alaska's wonders. Certain departures will feature a National Geographic photographer or expert.

Visit our website to read staff and guest speaker bios for this expedition.

Add a pre- or post-trip 7-day inland exploration to Denali National Park. (See pages 28-29 for details.)

A humpback whale breaches.



DAY 1: SEATTLE/JUNEAU/EMBARK

Fly from Seattle to Juneau. Explore the newly constructed Alaska State Museum, with its sprawling collection of natural history and cultural artifacts, and explore downtown Juneau. Settle into your cabin before dinner. Later, explore the port of Juneau on your own. Embark *National Geographic Sea Bird*, *National Geographic Quest*. (D)

DAY 2: TRACY ARM-FORDS TERROR WILDERNESS

Voyage into Tracy or Endicott Arm, both spectacular fjords, with waterfalls cascading from glacially carved walls. See the soaring Dawes or South Sawyer Glacier up close and take a cruise in an expedition landing craft for an unbeatable view among sculpted icebergs. Keep an eye out for harbor seals, harbor porpoises and arctic terns. (B,L,D)



Petersburg.

DAY 3: PETERSBURG

Search for humpback whales as we head towards the small, true Alaskan fishing town of Petersburg on Mitkof Island. Explore a unique Southeast Alaskan ecosystem, the “muskeg,” with stunted trees and carnivorous plants. There is an opportunity for bike riding and an optional floatplane excursion. Enjoy a crab feast this evening. (B,L,D)

DAY 4: FREDERICK SOUND AND CHATHAM STRAIT

Explore along the rugged coast seeking out humpback whales in their summer feeding grounds. Expert staff will interpret their life histories and behaviors. Later we'll explore the coast by kayak or go ashore to explore bear trails and salmon streams learning about the rain forest ecosystem as we go. (B,L,D)

DAY 5: ICY STRAIT AND THE INIAN ISLANDS

Explore among the Inian Islands, where an abundance of Steller sea lions and sea otters reside. We'll search for marine mammals in the

rich waters of Icy Strait and choose the perfect spot around Chichagof Island to hike and where sightings of bald eagles are very common. (B,L,D)

DAY 6: GLACIER BAY NATIONAL PARK

By special permit, we explore Glacier Bay, a not-to-be-missed gem of Alaska. See glaciers that end abruptly at the water's edge and possibly observe them “calving”—tons of ice crashing into the sea—accompanied by an exhilaratingly thunderous sound. Wilderness abounds—mountain goats roam the steep cliffs and brown bears patrol the shore; harbor seals, Steller sea lions and puffins live in these icy waters. A native Tlingit interpreter joins us to share the lore and legend of the area. We will also be joined by a National Park Service Ranger. (B,L,D)

DAY 7: SOUTHEAST ALASKA'S ISLANDS, BAYS AND FJORDS

Today, nature is our guide. We may explore an isolated beach to take a closer look at tide pools, beachcomb, or hike stunning forest trails, or see bear tracks worn into the soil while walking an isolated meadow. If conditions permit, we'll do some kayaking, always watching for marine and terrestrial life. (B,L,D)

DAY 8: SITKA/DISEMBARK/SEATTLE

After breakfast we disembark in Sitka, Southeast Alaska's only oceanfront town. Visit the onion-domed St. Michael's Russian Orthodox Church. At the Raptor Rehabilitation Center, we have close views of bald eagles, owls and other species normally seen at a distance. Drive to the airport for our afternoon flight to Seattle. (B)



EXPEDITION DETAILS

DATES: 2018 May 20*, 27; Jun. 3*, 10, 17*, 24; Jul. 1*, 8, 15*, 22, 29*; Aug. 5, 12*, 19 (*Sea Lion*) May 13*, 20, 27*; Jun. 3, 10*, 17, 24*; Jul. 1, 8*, 15, 22*, 29; Aug. 5*, 12, 19*, 26 (*Quest*)

*These departures travel in the reverse order, from Sitka to Juneau, making all the same stops.

SPECIAL OFFER:

Book by Dec. 31, 2017 and receive **FREE ROUND-TRIP AIRFARE** between Seattle and Alaska on select May departures.

EXPLORE TONGASS NATIONAL FOREST

Our Forest Service Special Use Permit for the Tongass National Forest enables you to hike and kayak in wild and remote areas of Southeast Alaska.

NATIONAL GEOGRAPHIC PHOTOGRAPHER

Join Alaska resident, marine biologist and National Geographic photographer **Flip Nicklin** on the Jun. 3 & 10, 2018 voyages aboard the *National Geographic Quest*.



Steller sea lions.



Above: Wonder Lake reflects a stunning view of Mount McKinley as a canoer contemplates the scene. Right: Dall sheep and grizzly bears are just some of the wildlife which make Denali National Park and Preserve their home.





North Face Lodge, Denali National Park.

ADD AN INLAND ADVENTURE— EXPLORE DENALI

Discover the wildness at the heart of Alaska by adding an inland exploration of Denali National Park to your *Exploring Alaska's Coastal Wilderness* expedition. Choose from two ways to explore this grand National Park—both capped with rail rides on the historic Alaska Railroad through scenic countryside that is otherwise inaccessible.

DENALI NATIONAL PARK FROM NORTH FACE LODGE

PRE- OR POST-VOYAGE EXTENSION | 7 DAYS

Cost Per Person: \$6,190 double occupancy; \$8,590 single occupancy

Begin and end your days at the idyllic North Face Lodge, located 89 miles into the heart of the Park. With unparalleled access to prime hiking and wildlife viewing, the lodge is a quiet retreat, accessible only to guests and staff. Dine on delicious, locally sourced cuisine, and enjoy nightly presentations that tell the story of Denali's natural and cultural history. Explore via private vehicles, or if you prefer a more personal exploration, you can hike a trail near the lodge, canoe on Wonder Lake, bike, or even spend an afternoon fishing.

▶ VISIT WWW.EXPEDITIONS.COM/DENALI FOR
FULL DAY-BY-DAY ITINERARIES.



WILD ALASKA ESCAPE

6 DAYS/5 NIGHTS—ABOARD NATIONAL GEOGRAPHIC SEA BIRD

PRICES FROM: \$4,290 to \$7,490 (See pages 46-47 for complete prices.)

Explore wild Alaska on an active, exciting expedition to see the region's iconic wildlife and epic landscapes in the compact timeframe of one work week. Take long hikes on world-class trails through forests of towering trees, kayak long routes deep into glacially carved fjords, stand-up paddleboard in calm bays, and raft to an ancient Alaska native village—all with our nimble expedition ship as your moving basecamp.

EXPEDITION HIGHLIGHTS

- ▶ Paddle on long, naturalist-guided kayaking journeys into Alaska's dramatic bays.
- ▶ Explore Haines, the "adventure capital of Alaska," via raft, bicycle, or hiking boots.
- ▶ Board expedition landing crafts to view icebergs and the face of a glacier in Tracy or Endicott Arm.
- ▶ Choose optional flight-seeing offering breathtaking aerial views of Glacier Bay National Park

EXPERIENCE & EXPERTISE

30+
YEARS
EXPERIENCE

Our unparalleled 6-person expedition team is key to an in-depth experience. An expedition leader, three naturalists, a Lindblad-National Geographic certified photo instructor and undersea specialist, plus a wellness specialist and video chronicler, all contribute to your understanding of Alaska's wonders. Certain departures will feature a National Geographic photographer or expert.

Visit our website to read staff and guest speaker bios for this expedition.

Explore by bike in Haines.



DAY 1: SITKA/EMBARK

Arrive in Sitka, Southeast Alaska's only oceanfront town. Stretch your legs by walking the Totem Trail in Sitka National Historic Park or other local nature trails before stopping in at the Raptor Rehabilitation Center for an up close look at Alaska's birds of prey. Embark *National Geographic Sea Bird*. (D)

DAY 2: EXPLORING BARANOF OR CHICHAGOF ISLAND

Immerse yourself in the wilds of Alaska as you kayak deep into one of Baranof or Chichagof Island's countless, breathtaking bays. Hear bald eagles call from the tops of towering spruce and hemlock trees as you paddle through these mirror-calm waters. In the afternoon, learn the stories of this ancient rain forest on an adventurous hike with your naturalist guide. (B,L,D)



Floating down the Chilkat River.

DAY 3: LYNN CANAL

At the northern limit of Alaska's Inside Passage, Lynn Canal offers ample opportunity for active exploration. Spend today hiking and kayaking in the shadows of snow-capped peaks where the mighty Chilkat River meets the sea. (B,L,D)

DAY 4: HAINES

Haines is known as the "adventure capital of Alaska" for a very good reason. If you're feeling extra adventurous, you can choose from one of many world class hikes, cycle along the edge of a glacial fjord, or take an optional flight-seeing excursion over Glacier Bay National Park. Or you may also choose to raft down the Chilkat River, calling into the ancient Chilkat Tlingit village of Klukwan for a dance demonstration and cultural interpretation. The day is full of options. (B,L,D)

DAY 5: TRACY ARM—FORDS TERROR WILDERNESS

Awake this morning in the stunningly beautiful Tracy Arm, part of the Tracy Arms Fords Terror Wilderness. Enter this glacially carved wilderness aboard our nimble ship, then set out to explore by expedition landing craft for a view of Sawyer or Dawes Glaciers. If conditions permit, hop into one of our kayaks to paddle along fjord walls that soar straight from the sea, as you spot curious harbor seals trailing your wake. Cap off your adventurous voyage with the Captain's farewell dinner. (B,L,D)



Guests stand up paddleboarding, Tracy Arm Fjord.

DAY 6: JUNEAU/DISEMBARK/SEATTLE
Disembark in downtown Juneau and transfer to the airport for flights to Seattle. (B)



EXPEDITION DETAILS

DATES: 2018 May 19, 24*, 29; Jun. 3*, 28; Jul. 3*, 8, 13*; Aug. 7, 12*, 17, 22*

*These departures travel in the reverse order, from Sitka to Juneau, making all the same stops.

NATIONAL GEOGRAPHIC PHOTOGRAPHER

Travel with National Geographic photographer, **Krista Rossow** on the May 29 & Jun. 3, 2018 voyages.



South Sawyer glacier.

BIG PICTURE ALASKA

11 DAYS/10 NIGHTS—ABOARD NATIONAL GEOGRAPHIC SEA BIRD
PRICES FROM: \$8,990 to \$15,740 (See pages 32-33 for complete prices.)

Sail aboard the *National Geographic Sea Bird* on this immersive, wide-ranging expedition through Alaska's famed Inside Passage. Experience the perfect mix of small-town life and the grand expanse of the wild landscape that surrounds it, from the northernmost limit of the Inside Passage to the southernmost. Capture it all with the help of a Lindblad-National Geographic certified photo instructor.

EXPEDITION HIGHLIGHTS

- ▶ Raft though the Chilkat Bald Eagle Preserve, which boasts the largest congregation of bald eagles in the world.
- ▶ Explore Glacier Bay National Park, Misty Fjords National Monument, and search for humpback whales in their summer feeding grounds.
- ▶ Kayak amid glacial ice, hike the Tongass National Forest and learn about the region's rich Tlingit heritage.

EXPERIENCE & EXPERTISE

30+
YEARS
EXPERIENCE

Our unparalleled 6-person expedition team is key to an in-depth experience. An expedition leader, three naturalists, a Lindblad-National Geographic certified photo instructor and undersea specialist, plus a wellness specialist and video chronicler, all contribute to your understanding of Alaska's wonders. Certain departures will feature a National Geographic photographer or expert.

Visit our website to read staff and guest speaker bios for this expedition.

Kayaking for the perfect shot.

DAY 1: KETCHIKAN/EMBARK

Arrive in Ketchikan, view the priceless collection of 19th-century Tlingit totem poles at the Totem Heritage Center. Embark *National Geographic Sea Bird*. (D)

DAY 2: MISTY FIORDS

Wake amid the glacially-carved cliffs of Misty Fiords National Monument. Explore by expedition landing craft and kayak for a closer perspective. (B,L,D)



Bald eagle.

DAY 3: BEHM CANAL/CLARENCE STRAIT

Explore the verdant Tongass National Forest. Cruise through steep-walled fiords in search of photogenic wildlife. (B,L,D)

DAY 4: THOMAS BAY/PETERSBURG

Call at the quaint Alaskan town of Petersburg on Mitkof Island. See a unique muskeg ecosystem with stunted trees and carnivorous plants. Explore by bike or optional flightseeing. (B,L,D)

DAY 5: TRACY ARM—FORDS TERROR WILDERNESS

Navigate the spectacular Tracy or Endicott Arm fjords to South Sawyer or Dawes Glacier, and, if conditions permit, venture closer in our expedition landing craft for unparalleled photo opportunities. (B,L,D)

DAY 6: HAINES

Explore Alaska's "adventure capital" on a world class hike or bike ride along the edge of a glacial lake. Or raft the Chilkat River to a bald eagle preserve, and call at the ancient Chilkat Tlingit village of Klukwan for a cultural interpretation. (B,L,D)

DAY 7: LYNN CANAL

Hike and kayak where the mighty Chilkat River meets the sea, in the shadow of snow-capped peaks and at the northern limit of Alaska's Inside Passage. (B,L,D)

DAY 8: GLACIER BAY NATIONAL PARK

We spend the entire day amidst the coves, fjords, tidewater glaciers, and majestic mountains of Glacier Bay National Park. Search for mountain goats, harbor seals, Steller sea lions, and puffins. A native Tlingit interpreter and a National Park Service Ranger join us to share the local legends of the area. (B,L,D)

DAY 9: ICY STRAIT/INIAN ISLANDS

See an abundance of Steller sea lions. Hike nearby islands, kayak, and search for whales in the rich waters of Icy Strait. (B,L,D)

DAY 10: EXPLORING BARANOF OR CHICHAGOF ISLANDS

Kayak, hike, and explore where conditions are best and wildlife most active. Cap off the day with the Captain's farewell dinner. (B,L,D)

DAY 11: SITKA/DISEMBARK/SEATTLE

After breakfast, disembark to visit picturesque Saint Michael's Russian Orthodox Cathedral then visit the Raptor Rehabilitation Center before transferring to the airport for flights to Seattle. (B)



EXPEDITION DETAILS

DATES: 2018 Jun. 8*, 18; Jul. 18* 📷, 28 📷

📷 Photo Expeditions

*These departures travel in the reverse order, from Sitka to Ketchikan, making all the same stops.

NATIONAL GEOGRAPHIC PHOTOGRAPHER

Travel with National Geographic photographer **Rich Reid** on the Jul. 18 & Jul. 28 voyages.



EXPLORE TONGASS NATIONAL PARK

Our Forest Service Special Use Permit for Tongass National Forest enables you to hike and kayak in wild and remote areas of Southeast Alaska.



Brown bear fishing.

A REMARKABLE JOURNEY TO ALASKA, BRITISH COLUMBIA & HAIDA GWAI



Special Access to Mythic Haida Gwaii

Though Haida Gwaii, a spectacular archipelago off British Columbia, is known as the “islands at the edge of the world,” it is well within reach aboard *National Geographic Sea Bird* and *Sea Lion*—the only U.S. vessels permitted to visit these hallowed islands in over 20 years. The Haida are legendary Pacific coast artists and artisans. So, we

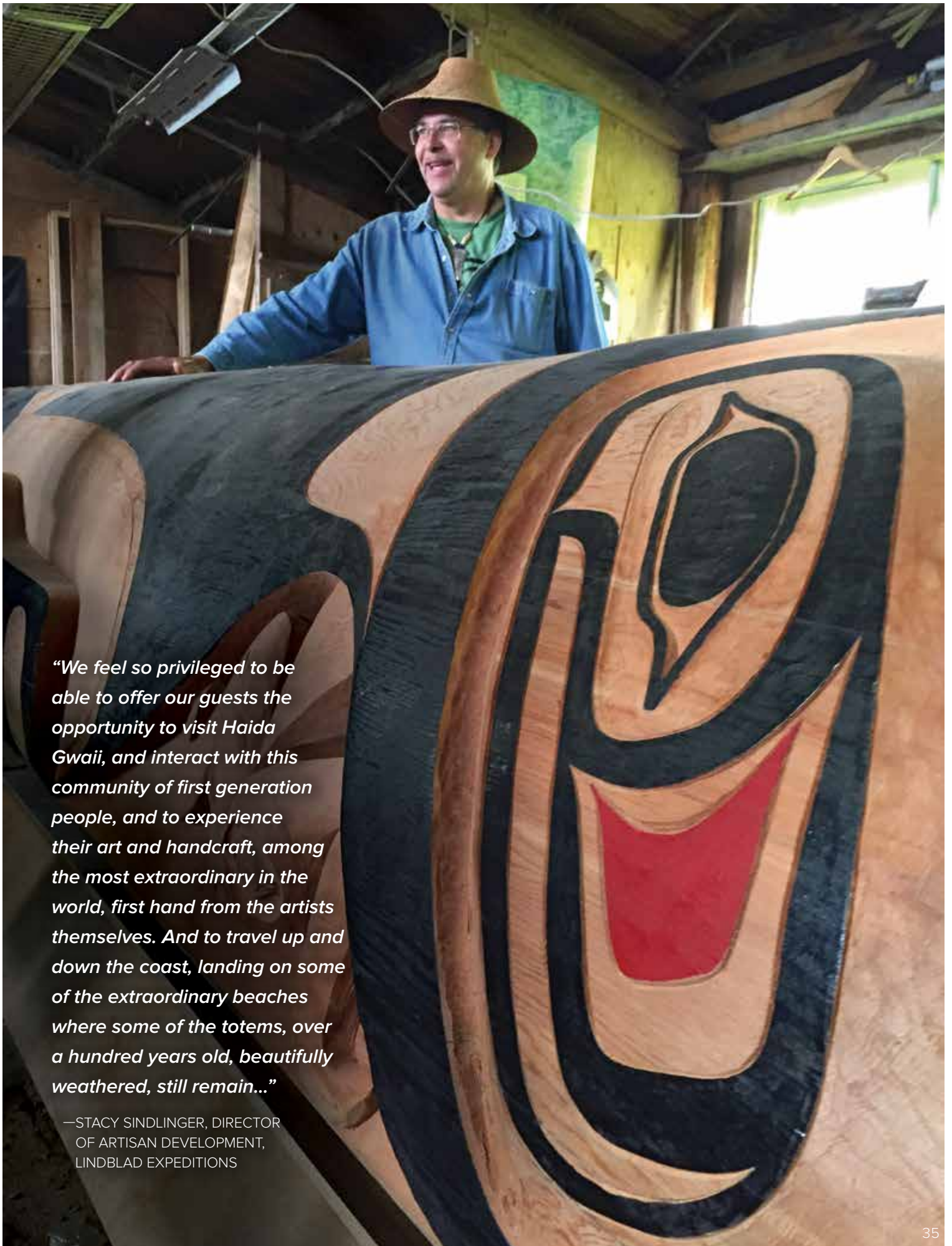
were initially permitted to visit Haida lands because of our commitment to artisans, evidenced by our Artisan Fund (financed by a percentage of sales from onboard Global Galleries) and the environment in which they create their works. To see their works, most strikingly the totems created by master carvers, and to hear the stories woven into the very fibers of Haida regalia, is indeed a privilege. Haida cultural interpreters will introduce us to a wealth of cultural objects—including the legendary site, SḠang Gwaay Lnagaay, where silvered totem poles some 150–200 years old, line the shore.

Plus An In-Depth Southeast Alaska Exploration

Sail into mist-shrouded fjords and see the thundering glaciers of Southeast Alaska. See whales, bears, eagles—all of the region’s iconic wildlife—on an expedition to the state’s famed natural wonders as well as some out-of-the-way regions we’ve uncovered in our 35 years here. This long expedition gives us a richer opportunity for more wildlife observations.



Clockwise from top left: Wood carver at work in Old Massett; masks created by world-renowned Haida artist in his home studio; Haida artist Christian White stands next to an unfinished totem pole he is carving; a traditional Haida dance performance.



“We feel so privileged to be able to offer our guests the opportunity to visit Haida Gwaii, and interact with this community of first generation people, and to experience their art and handcraft, among the most extraordinary in the world, first hand from the artists themselves. And to travel up and down the coast, landing on some of the extraordinary beaches where some of the totems, over a hundred years old, beautifully weathered, still remain...”

—STACY SINDLINGER, DIRECTOR
OF ARTISAN DEVELOPMENT,
LINDBLAD EXPEDITIONS

A REMARKABLE JOURNEY TO ALASKA, BRITISH COLUMBIA & HAIDA GWAII

15 DAYS/14 NIGHTS—ABOARD NATIONAL GEOGRAPHIC SEA BIRD AND NATIONAL GEOGRAPHIC SEA LION

PRICES FROM: \$10,900 to \$19,860
(See pages 34-35 for complete prices.)

Join a unique expedition in Alaska's Inside Passage and British Columbia including Haida Gwaii (formerly the Queen Charlotte Islands) off the coast of British Columbia. We are the only company with ships carrying more than 22 guests permitted to visit Gwaii Haanas National Park Reserve, National Marine Conservation Area Reserve, and Haida Heritage site in over two decades. Here, you'll see the ancient totems at SGang Gwaay (Ninstints), a UNESCO World Heritage site, and meet with local artisans in a region rich with history seldom-seen.

EXPEDITION HIGHLIGHTS

- ▶ Explore ancestral Haida villages, see ancient totem poles, take part in a traditional dance performance, and much more.
- ▶ Explore glacially-carved fjords, Glacier Bay National Park, and search for humpback whales in their summer feeding grounds.
- ▶ Kayak spectacular bays, see waterfalls cascading from glacially-carved walls, and hike old-growth forest where paw prints outnumber footprints.

Standing totem pole at SGang Gwaay.

EXPERIENCE & EXPERTISE

30+
YEARS
EXPERIENCE

Our unparalleled 6-person expedition team is key to an in-depth experience.

An expedition leader, three naturalists, a Lindblad-National Geographic certified photo instructor, Haida Cultural Interpreter, and undersea specialist, plus a wellness specialist and video chronicler, all contribute to your understanding of Alaska's wonders. Certain departures will feature a National Geographic photographer or expert.

Visit our website to read staff bios for this expedition.

Sea Bird & Sea Lion are the **ONLY** U.S. vessels permitted to visit these hallowed islands of Haida Gwaii in over 20 years.

DAY 1: SEATTLE/EMBARK

Arrive in Seattle this afternoon and embark *National Geographic Sea Bird* or *Sea Lion*. (D)

DAY 2: GULF ISLANDS, BRITISH COLUMBIA

Search for orca whales and sail north past forested islands. (B,L,D)



Guests visit with carvers, Haida Gwaii.

DAY 3: JOHNSTONE STRAIT AND ALERT BAY, BRITISH COLUMBIA

Visit the U'mista Cultural Centre in Alert Bay, where we'll watch traditional First Nations performances and learn about the art and culture of the Kwakwaka'wakw people. (B,L,D)

DAYS 4 AND 5: INSIDE PASSAGE OF BRITISH COLUMBIA

Head northward along the coastline looking for whales, dolphins, bears, deer and other wildlife. Go ashore to explore or kayak the remote bays and inlets. (B,L,D)

DAYS 6-8: HAIDA GWAI

Explore the westernmost islands in Canada and the home of the Haida people. A Haida cultural interpreter will join us, first visiting the Haida Heritage Centre at Kay Llnagaay to learn about the incredible history of the Haida people and the meaning behind their renowned artwork. In the ancestral town of Old Massett, join in a traditional dance performance and feast, and meet local artisans. Explore the Gwaii Haanas National Park Reserve, National Marine Conservation Area Reserve, and Haida Heritage site. By special permit, see the ancient totems at the UNESCO World Heritage site of S'Gang Gwaay (Ninstints) or K'una (Skedans). Take expedition landing craft around the incredibly biodiverse islands where endemic species thrive. (B,L,D)

DAY 9: MISTY FJORDS, ALASKA

Cruise past glacially carved cliffs and kayak in the stillness of Misty Fjords' forested backwaters. (B,L,D)

DAY 10: FREDERICK SOUND AND PETERSBURG

Join naturalists on deck and search for orcas, humpback whales, and Steller sea lions. Visit the fishing village of Petersburg, known as "Alaska's Little Norway." Enjoy a crab feast this evening. (B,L,D)

DAY 11: TRACY ARM-FORDS TERROR WILDERNESS

Voyage into Tracy or Endicott Arm, both spectacular fjords, with waterfalls cascading from glacially carved walls. See the soaring Dawes or Sawyer Glacier up close and take a cruise in an expedition landing craft for an unbeatable view among sculpted icebergs. (B,L,D)

DAY 12: GLACIER BAY NATIONAL PARK

Spend the entire day among enormous glaciers and expansive wilderness. Listen as the quiet stillness of the area is broken by the thunder of tons of ice calving into the sea. A native Tlingit interpreter joins us to share the lore and legend of the area. A National Park Service Ranger will join us as well. (B,L,D)

DAY 13: ICY STRAIT AND THE INIAN ISLANDS

Cruise among the Inian Islands, where an abundance of Steller sea lions reside. Hike nearby islands, kayak and search for whales in rich waters of Icy Strait. Conditions permitting, we'll lower the ship's hydrophone to listen in on the whales' communication. (B,L,D)

DAY 14: SOUTHEAST ALASKA'S ISLANDS, BAYS AND FJORDS

Kayak and hike among forested islands on our final exploration of Southeast Alaska. (B,L,D)

DAY 15: SITKA/DISEMBARK/SEATTLE

See the picturesque city of Sitka on Baranof Island and meet eagles up close at the Raptor Rehabilitation Center before transferring to the airport for flights to Seattle. (B)



EXPEDITION DETAILS

DATES: 2018 May 5 📷; Aug. 27 📷* (*Sea Bird*)
May 6; Aug. 26* (*Sea Lion*)

*This departure travels in the reverse order, from Sitka to Seattle, making all the same stops.

📷 Photo Expedition

SPECIAL OFFER:

Book by **Mar. 31, 2018** and receive **FREE ONE-WAY AIR** (Sitka/Seattle) on select departures.

NATIONAL GEOGRAPHIC PHOTOGRAPHER

National Geographic Photographer **Ken Garrett** joins the Aug. 27 departure.



Zodiac tour of glacial ice.

TREASURES OF THE INSIDE PASSAGE



Explore by kayak.



The best of the region, plus an Inside Passage exploration

The whale-studded waters of the San Juan Islands. Alert Bay and the Kwakwaka'wakw people. Historic Johnstone Strait and the regal landscapes of British Columbia's Inside Passage. The glacier-carved cliffs of Misty Fiords, and the thunderously calving terminals of Glacier Bay.

These and more are the magnets that pull adventurous travelers to Alaska and British Columbia—and is what *National Geographic Quest* has been expressly designed to discover. It is the perfect platform for exploring—with onboard fleets of landing craft, kayaks, and paddleboards, and exceptional expedition teams. Larger than our other Alaska ships, *Quest* carries 100 guests while retaining the warmth, and nimble scale, of the 62-guest *National Geographic Sea Bird* and *Sea Lion*. So, for those who love sharing the bow with our expedition team as we watch feeding humpbacks or hunting killer whales, the experience is amazing. But with more space and amenities, *Quest* offers a level of comfort that enhances the entire expedition experience, from early morning outings to cocktail hour recaps.



Guests watch a performance in the big house in Alert Bay.

TREASURES OF THE INSIDE PASSAGE: ALASKA AND BRITISH COLUMBIA

14 DAYS/13 NIGHTS ABOARD NATIONAL GEOGRAPHIC QUEST
PRICES FROM: \$9,990 to \$15,960 (See pages 38-39 for complete prices.)

Board the newest ships in the Lindblad-National Geographic fleet, *National Geographic Quest*, on an in-depth exploration of the San Juan Islands, British Columbia, and Alaska. Linger in the temperate rain forests and wildlife-rich channels of British Columbia, and enjoy ample time to explore the breathtaking fjords and towering glaciers of Southeast Alaska. Plus, discover the cultural facets of this coast during captivating performances and interactions with the Kwakwaka'wakw people of Alert Bay.

EXPEDITION HIGHLIGHTS

- ▶ **NEW in 2018**—Explore the charming city of Victoria, British Columbia via custom curated tours and enjoy a private reception surrounded by incredible artwork at the Robert Bateman museum.
- ▶ Explore the wild and sublimely tranquil San Juan and Gulf Islands.
- ▶ Observe a moving First Nations performance at the U'Mista Cultural Center.
- ▶ By special permit, spend a full day exploring Glacier Bay National Park.

EXPERIENCE & EXPERTISE



Our unparalleled 10-person team aboard the *Quest* is key to an in-depth experience. An expedition leader, 4 naturalists (depending on the ship), a Lindblad-National Geographic certified photo instructor and undersea specialist, plus a wellness specialist and video chronicler all contribute to your understanding of Alaska's wonders. Certain departures will feature a National Geographic photographer or expert.

Visit our website to read staff and guest speaker bios for this expedition.

Northern resident killer whales spyhopping, Alert Bay, British Columbia.



DAY 1: SEATTLE/EMBARK

Arrive in Seattle this afternoon and embark the ship. (D)

DAY 2: SAN JUAN ISLANDS, WASHINGTON

Spend a full day exploring the San Juan Islands via naturalist-led hikes and by kayak. Search for killer whales. (B,L,D)

DAY 3: VICTORIA, BRITISH COLUMBIA

Clear into Canada in the charming city of Victoria and choose from several tailor-made options to explore based on your interests. Visit private gardens, bike along the waterfront, take a historical stroll through Old Town or peruse the collections at local art galleries. In the evening, enjoy a private reception at the Robert Bateman Centre while taking in the incredible collection of paintings. (B,L,D)



Inner Harbour, Victoria, British Columbia.

DAY 4: GULF ISLANDS

Located in the Strait of Georgia, between the mainland of British Columbia and Vancouver Island, the Gulf Islands are a kayaker's paradise. Explore the myriad islets and rocky coasts and keep an eye out for harbor seals and an array of sea birds, shore birds and birds of prey. (B,L,D)

DAY 5: ALERT BAY AND JOHNSTONE STRAIT, BRITISH COLUMBIA

Observe a traditional First Nations performance in Alert Bay, visit the U'Mista Cultural Center, and learn from the Kwakwaka'wakw people. (B,L,D)

DAYS 6 AND 7: INSIDE PASSAGE OF BRITISH COLUMBIA

Head northward along the pristine coastline in search of whales, dolphins, bears, deer, and other wildlife. Go ashore to explore or kayak among the many bays and inlets. (B,L,D)

DAY 8: MISTY FIORDS, ALASKA

Cruise past glacially-carved cliffs and kayak in the stillness of Misty Fiords forested backwaters. (B,L,D)

DAY 9: PETERSBURG

Search for humpback whales as we head towards the small, fishing village of Petersburg on Mitkof Island. Go ashore for a walk along a quiet forest trail and explore the unique Southeast Alaskan ecosystem, the "muskeg," with stunted trees and carnivorous plants. Later, enjoy an evening crab feast. (B,L,D)

DAY 10: TRACY ARM-FORDS TERROR WILDERNESS

Voyage into Tracy or Endicott Arm, both spectacular fjords, with waterfalls cascading from glacially carved walls. See the soaring Dawes or South Sawyer Glacier up close and take a Zodiac cruise for an unbeatable view of sculpted icebergs. (B,L,D)

DAY 11: GLACIER BAY NATIONAL PARK

Via special park permit, spend the entire day among the enormous glaciers in the expansive wilderness. Listen as the quiet stillness of the area is broken by the thunder of tons of ice calving into the sea. A native Tlingit interpreter joins us to share the lore and legend of the area. Wilderness abounds! (B,L,D)

DAY 12: INIAN ISLANDS / ICY STRAIT

Cruise among the Inian Islands, where an abundance of Steller sea lions reside. Hike nearby islands, kayak, and search for whales in rich waters of Icy Strait. (B,L,D)

DAY 13: EXPLORING BARANOF OR CHICHAGOF ISLAND

Spend a full day searching for humpback whales in the rich waters off Chichagof or Baranof Island, kayak, hike and enjoy the Captain's Farewell Dinner this evening. (B,L,D)

DAY 14: SITKA/DISEMBARK/HOME

Visit Saint Michael's Russian Orthodox Cathedral with its picturesque spire; walk through the Sitka National Historical Park, where totem poles line trails; and meet eagles up close at the Raptor Rehabilitation Center. Transfer to the airport for flights home. (B)



EXPEDITION DETAILS

DATES: 2018⁺ Apr. 30; Sep. 2*

*These departures travel in the reverse order, from Sitka to Seattle, making all the same stops.

SPECIAL OFFER:

Book by **Mar. 31, 2018** and receive **FREE ONE-WAY AIR** (Sitka/Seattle) on the Apr. 30 & Sep. 2, 2018 departures. Subject to availability. New bookings only.



Sea otter eating basket star.

INCLUSIVE PRICING MEANS

NO EXTRA CHARGES FOR ACTIVITIES

All the daily activities—from city explorations to Zodiac cruises, kayaking, or hiking, paddleboarding, rafting and more—are included in the price.

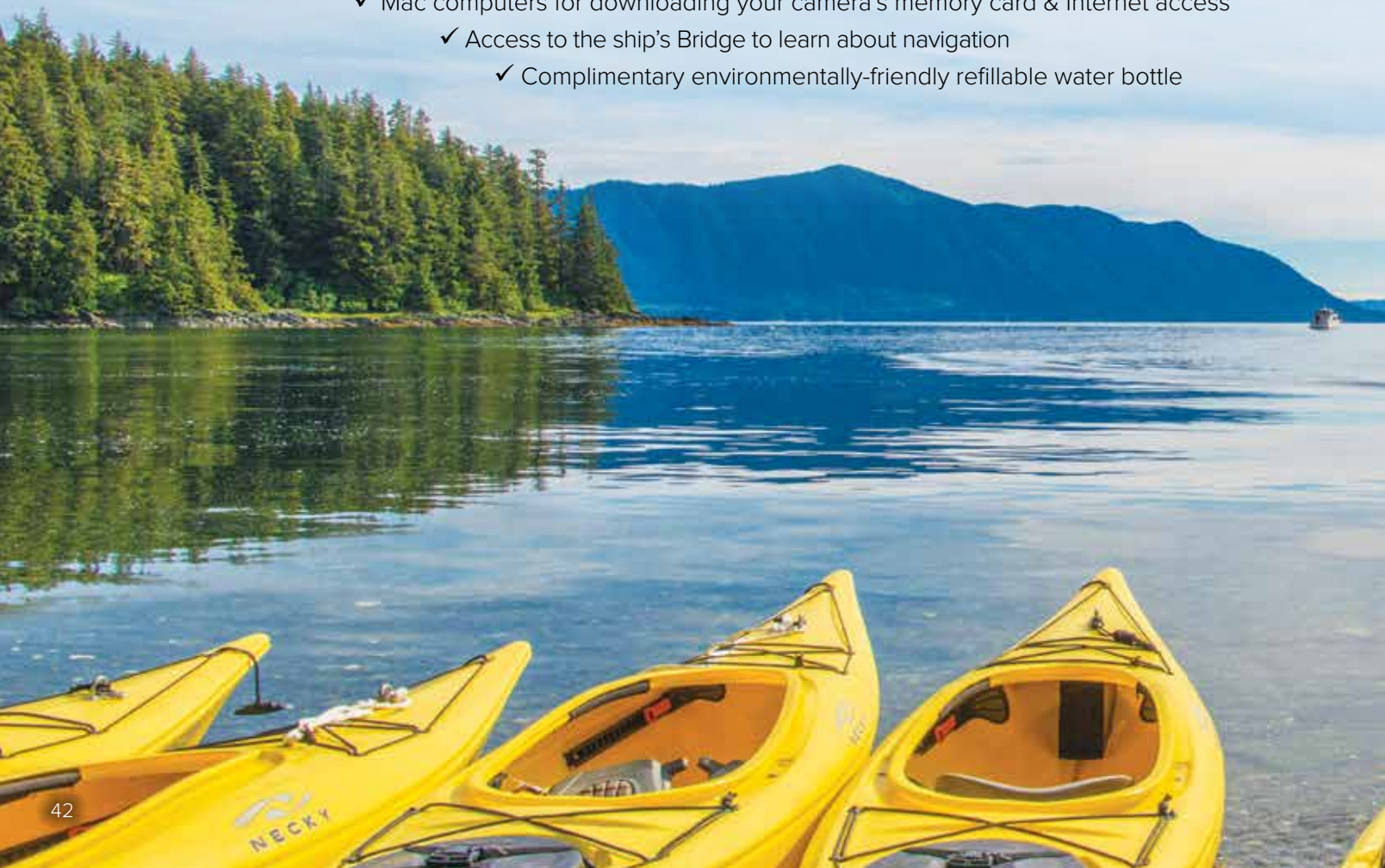
- ✓ Flight-seeing excursion on *Wild Alaska Escape* itinerary
- ✓ Presentations & photo instruction, including a special Alaska Whale Foundation presentation
- ✓ Special access permits, park fees, port taxes
- ✓ Transfers to and from group flights

NO CHARGE FOR IN-DEPTH EXPERTISE

The knowledgeable guidance and company of our expedition staff are open to all and included in the price.

AND FREELY ENJOY THE FOLLOWING ABOARD SHIP:

- ✓ All meals—from breakfast, lunch & dinner in the dining room
- ✓ All non-alcoholic beverages including unlimited cappuccinos, latte, coffee, tea & soda
- ✓ Hors d'oeuvres & snacks during lounge recap
- ✓ Snacks are put out throughout the day
- ✓ Fitness Center with elliptical, treadmill, stationary bicycle, free weights, bands & more
- ✓ Access to reference books and board games in the library
 - ✓ Daily stretching class with wellness specialist
 - ✓ Mac computers for downloading your camera's memory card & Internet access
 - ✓ Access to the ship's Bridge to learn about navigation
 - ✓ Complimentary environmentally-friendly refillable water bottle



VALUE PLUS EXPERIENCES

SPECIAL OFFERS: BOOK BY MAR. 31, 2018 : Offers are available on select departures, and based on availability at the time of booking. On voyages with complimentary air offers, airfare is based on economy group flights that must be ticketed by Lindblad Expeditions. In the case that Lindblad's group or charter flights are no longer available at time of booking, we reserve the right to issue a credit. All offers are valid for new bookings only, subject to availability at the time of booking, and may not be combined with other offers and pre- and post-extensions. Call for details.

BRINGING THE KIDS: We believe sharing an expedition with your kids or grandkids is a life-enhancing experience. So take \$500 off for each child under the age of 18.

TRAVELING AS A GROUP: Save 5% when traveling as a group of 8 or more people. Take advantage of these great savings, while enjoying traveling with your friends and family. This savings is applicable to voyage fares only, and is not valid on extensions or airfare. Deposit, final payments, and cancellation policies for group travel vary from our regular policies.

▶ GET A QUICK PEEK AT ALL YOU CAN EXPERIENCE ON A LINDBLAD-NATIONAL GEOGRAPHIC EXPEDITION IN ALASKA! VISIT EXPEDITIONS.COM/ALASKAVIDEO



NEW SHIPS



NATIONAL GEOGRAPHIC QUEST & NATIONAL GEOGRAPHIC VENTURE

CAPACITY: 100 Guests in 50 cabins.
REGISTRY: United States. **OVERALL LENGTH:** 238 feet.

Sister ships *National Geographic Quest* and *National Geographic Venture* (launching 2019) will be the latest additions to our fleet. Designed with over 50 years of expedition heritage and built in the U.S.A., both ships will set a new standard in exploration and comfort.

PUBLIC AREAS: Global gallery; fitness center; LEXspa; lounge with full service bar and facilities for films and presentations; observation deck; mudroom with lockers for expedition gear, and a partially covered sundeck with chairs and tables. Our “open bridge” provides guests an opportunity to meet our officers and captain and learn about navigation.

MEALS: Served in single seatings with unassigned tables for an informal atmosphere and easy mingling. Breakfast and lunch are wide selection buffets with chef action stations, while dinners are primarily served plated. Menu emphasizes local fare.

CABINS: All cabins face outside with windows or portholes, private facilities and climate controls. Category 4 cabins have step-out balconies.

EXPEDITION EQUIPMENT: A fleet of 8 Zodiacs and 24 kayaks, Remotely Operated Vehicle (ROV), hydrophone, splash-cam, underwater video camera, video microscope, paddleboards, snorkeling gear for all guests (where applicable).

SPECIAL FEATURES: Guest internet access, elevator, Lindblad-National Geographic certified photo instructor, a video chronicler and undersea specialist.

WELLNESS: The vessel is staffed by a Wellness Specialist and features a gym with an elliptical machine, treadmill, exercycles, handweights and resistance bands. Treatments in the LEXspa are available by appointment.



Insets clockwise from top: The lounge, with 270° views, is the hub of the expedition community; a spacious and open sun deck will provide unparalleled views (artist's rendering).



Left to right: Category 5 cabin is our most spacious; Category 4 cabin with lower single beds (which can be converted to a Queen) and a private step-out balcony. Select cabins connect via an inside doorway.

CATEGORY 1: Main Deck #301-306 Cabins feature two lower single beds that can convert to a Queen, a writing desk and two portholes.

CATEGORY 2: Main Deck #307-315 Cabins feature two lower single beds that can convert to a Queen, a writing desk and two portholes.

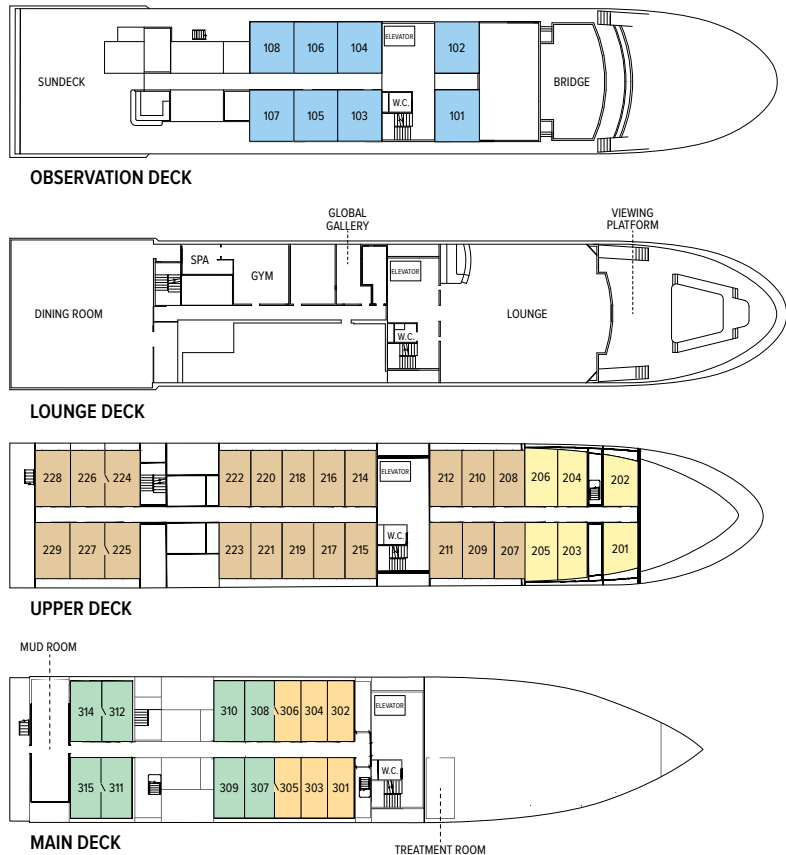
CATEGORY 3: Upper Deck #201-206 Cabins feature two lower single beds that can convert to a Queen, a writing desk and two large view windows.

CATEGORY 4: Upper Deck #207-229 Cabins feature two lower single beds that can convert to a Queen, a writing desk, sliding glass door, and small, private balcony.

CATEGORY 5 (SUITE): Observation Deck #101-108 Cabins feature two lower single beds that can convert to a Queen, large view windows, an expanded bathroom, writing desk, ample storage space, and a convertible sofa bed to accommodate a third person.

NOTE: Sole Occupancy cabins are available in Categories 1 and 2 only. Third person rates are available in Category 5 cabins at one half the double occupancy rate.

Connecting Cabins via internal doorway access: Main Deck: #312-314, #311-315, #306-308, #305-307; Upper Deck: #224-226, #225-227



Prices are per person, double occupancy unless indicated as solo.

ITINERARY	YEAR	CAT. 1	CAT. 2	CAT. 3	CAT. 4	CAT. 5 SUITE	CAT. 1 SOLO	CAT. 2 SOLO	ADVANCE PAYMENT	NOTE
Exploring Alaska's Coastal Wilderness – Page 27	2018	\$6,590	\$7,290	\$7,790	\$8,690	\$9,590	\$9,990	\$10,600	\$750	Sample Airfares: Seattle/Juneau/Sitka/Seattle or vice versa: Economy from \$350; Business Class from \$800.
Treasures of the Inside Passage: Alaska and British Columbia – Page 41	2018	\$9,990	\$10,640	\$11,190	\$11,990	\$12,890	\$14,990	\$15,960	\$1,000	Sample Airfares: Seattle/Juneau/Sitka/Seattle or vice versa: Economy from \$200; Business Class from \$620.



NATIONAL GEOGRAPHIC SEA BIRD & SEA LION

CAPACITY: 62 guests in 31 outside cabins.

REGISTRY: United States.

OVERALL LENGTH: 152 feet.

PUBLIC AREAS: Our twin sister ships feature a library; global market; lounge with full-service bar and facilities for films, slide shows and presentations; observation deck; partially covered sun deck with chairs and tables, and LEXspa. Our “open bridge” provides guests an opportunity to meet our officers and captain and learn about navigation.

MEALS: Served in single seatings with unassigned tables for an informal atmosphere and easy mingling. Breakfasts are wide selection buffets and lunch is often served family style. Dinners are primarily served plated. Menu emphasizes local fare.

CABINS: All face outside with windows, private facilities and climate controls.

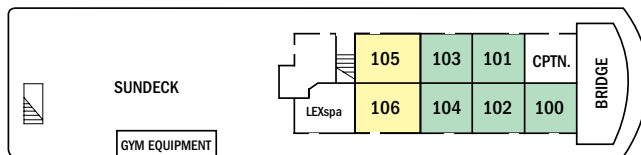
EXPEDITION EQUIPMENT: Bow camera, hydrophone, kayaks, snorkeling gear, fleet of paddleboards, splash-cam, underwater video camera, video microscope, wet suits in Baja and expedition landing craft.

SPECIAL FEATURES: Guest internet access. A Lindblad-National Geographic photo instructor and a video chronicler are on board all voyages. A ship’s doctor is on board in Baja. An undersea specialist is on board in Baja and Alaska.

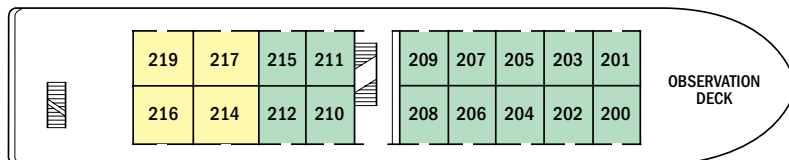
WELLNESS: The vessel is staffed by a wellness specialist and features exercise equipment, LEXspa and outdoor stretching area.



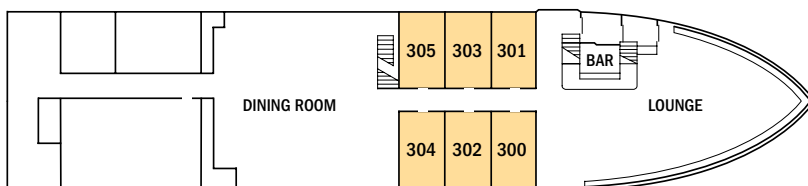
Guests enjoy the view of Glacier Bay National Park from the sundeck.



BRIDGE DECK



UPPER DECK



MAIN DECK



CATEGORY 1: Main Deck #300-305—Conveniently positioned between the dining room & lounge, these cabins feature two single lower beds, and a large view window.

CATEGORY 2: Bridge Deck #100-104; Upper Deck #200-212, 215—These well-located cabins include two lower single beds & a view window.

CATEGORY 3: Bridge Deck #105, 106; Upper Deck #214, 216, 217, 219—These cabins feature a seating unit with table and two large view windows. Upper Deck cabins include two lower single beds, which can convert to a double bed and a pull-out single bed for a third person; Bridge Deck cabins include two lower single beds only.

NOTE: Sole Occupancy cabins are available in Categories 1 and 2 only. Third person rates are available in certain categories at one half the double occupancy rate.

SHARED ACCOMMODATIONS: Shares can be arranged at the double occupancy rate in Categories 1 and 2 only.

Photos (clockwise from left): Expedition ship National Geographic Sea Bird can access hard-to-reach locations; twin beds can be pushed together to form a double bed in Category 3 cabins on the Upper Deck; enjoy an assortment of wine selections while dining; a comfortable Category 2 cabin.

Prices are per person, double occupancy unless indicated as solo.

ITINERARY	YEAR	CAT. 1	CAT. 2	CAT. 3	CAT. 1 SOLO	CAT. 2 SOLO	ADVANCE PAYMENT	NOTE
Exploring Alaska's Coastal Wilderness – Page 27	2018	\$5,990	\$6,890	\$7,990	\$8,990	\$10,340	\$750	Sample Airfares: Seattle/Juneau/Sitka/Seattle or vice versa: Economy from \$350; Business Class from \$800.
Wild Alaska Escape – Page 31	2018	\$4,290	\$4,990	\$5,990	\$6,440	\$7,490	\$750	Sample Airfares: Seattle/Juneau/Sitka/Seattle or vice versa: Economy from \$350; Business Class from \$800.
Big Picture Alaska – Page 33	2018	\$8,990	\$10,490	\$11,890	\$13,490	\$15,740	\$1,000	Sample Airfares: Seattle/Ketchikan/Sitka/Seattle or vice versa: Economy from \$360; Business Class from \$700.
A Remarkable Journey to Alaska, British Columbia & Haida Gwaii – Page 35	2018	\$10,900	\$12,450	\$14,530	\$16,350	\$19,860	\$1,500	Sample Airfares: Seattle/Sitka: Economy from \$200; Business Class from \$620.

TRAVELING FOR GOOD

We are committed more than ever to making a positive impact in the regions we explore. Southeast Alaska's pristine natural beauty, iconic species, and indigenous cultures deserve protection, and through the Lindblad-National Geographic (LEX-NG) Fund, we're working—in tandem with our guests—to support projects that are crucial to preserving Alaska's wilderness and wildlife for generations to come. We hope you will choose to explore Alaska with us, and be inspired by efforts there.

LEX-NG FUND GUESTS ARE MAKING A DIFFERENCE:

- ✓ Sitka Conservation Society helped protect two million acres of Tongass National Forest
- ✓ Alaska Whale Foundation photo-identified 150 unique humpback whales to assess population dynamics
- ✓ Southeast Alaska Conservation Council added 302, 400 temperature data points to a climate assessment using citizen scientists

▶ VISIT [EXPEDITIONS.COM/CONSERVATION](https://www.lindblad.com/expeditions/conservation) TO LEARN MORE

TO DATE WE'VE INVESTED
MORE THAN

1M

IN THE CONSERVATION
OF SOUTHEAST ALASKA



RESERVATION INFORMATION

Costs Include: All accommodations aboard ships or in hotels per itinerary or similar, all meals and nonalcoholic beverages aboard ship, meals on land as indicated, air transportation where indicated as included, shore excursions, sightseeing and entrance fees, use of kayaks (where available), special access permits, transfers to and from group flights, taxes and service charges, and services of our expedition staff.

Not Included: Air transportation (except where shown as included), extensions, passport, visa, immigration fees, meals not indicated, travel protection plan, items of a personal nature such as alcoholic beverages, internet, voyage DVD, laundry. Gratuities to ship's crew are at your discretion.

Airfare: For all programs, airfare is an additional cost unless otherwise indicated. Sample airfares are subject to change. We will gladly assist in making your air arrangements for a \$50 per person service fee.

Complimentary Airfare: On voyages with complimentary air offers, complimentary airfare is subject to availability at the time of booking, and is based on economy group flights that must be ticketed by Lindblad Expeditions. In the event complimentary flights are unavailable at time of booking, we reserve the right to issue an air credit. These offers are valid for new bookings only, and may not be combined with other offers.

TERMS & CONDITIONS

Reservations: To reserve your place, an advance payment is required at the time of reservation. The per person advance payment amount varies by program, and is outlined in our brochures, as well as on our website. Payment is accepted by Visa, MasterCard, American Express, Discover, or by check. Receipt of your initial payment indicates your acceptance of our complete Terms and Conditions. We require written notice at the time of reservation for any physical condition, diet, or treatment requiring special attention. Once your reservation is confirmed, we urge you to use your personalized online account for important information to help you prepare for your voyage. Managing your documents online will facilitate fast and accurate communication, and allow you to provide us with pertinent details we require, in order to complete your reservation. Your online account gives you access to your Expedition Guide, which includes valuable information specific to your voyage. You can also use your online account to make easy payments, view recommended flights and reading material, packing list, and so much more.

Final Payment: Final payment is due 90 days prior to departures.

Entry and Visa Requirements: All guests are advised to carry travel documents (passport/transit visa/entry visa) for the country through which they are transiting and/or entering. Reliable and most current information regarding international travel can be found by contacting the consulate/embassy of the country(s) you are visiting or transiting through. We will not be responsible if you are denied entry or transit into a Country, if you are unable to provide valid documents as per the Country's requirement.

Travel Protection Plan: We strongly recommend that you take advantage of our Travel Protection Plan. This plan offers comprehensive coverage to protect you from cancellation fees, costs incurred due to trip delays/interruption, and damaged or lost baggage, and provides medical assistance and evacuation during your travels. Our Travel Protection Plan is available for U.S. and Canadian residents only, and may be purchased any time prior to final payment due date. Travel Protection premiums are non-refundable once plan is purchased.

Smoking Policy: Smoking is allowed only in designated outdoor areas.

Responsibility and Other Terms & Conditions: Among other things, limitations of Lindblad Expeditions' and the National Geographic Society's liability for loss of property, injury, illness or death during the voyage will be provided to all guests on the ship's ticket sent prior to departure, and are

also available on our website at www.expeditions.com/terms, or upon request. By registering for a trip, the guest agrees to all such terms and conditions.

Note: Itineraries and prices listed in this brochure are as of publication date, and are subject to change. The company reserves the right to impose surcharges based on increases in the company's actual cost of fuel or other unexpected expenses.

CANCELLATION POLICY	
Number of Days Prior to Expedition Start	Per Person Cancellation Fee
120 or more days	\$350
119–90 days	Advance payment cost
89–60 days	25% of total fare
59–45 days	50% of total fare
44–0 days	No refund

\$350 will be rewarded in the form of a Lindblad Expeditions Travel Certificate. This cancellation policy applies to expeditions, extensions (with the exception of Denali), as well as all other additional services. The effective date of a cancellation will be the date on which your cancellation notice is received. Any revisions you make within the cancellation penalty period, such as departure date or choice of voyage, are subject to cancellation fees.

Note: Airline cancellation policies vary by carrier, as well as the type of fare used to issue your ticket.

Our group cancellation policy is listed in the Terms and Conditions section of our website, or you may call us for details. We stress the importance of purchasing a travel protection plan to protect yourself from fees in the event you need to cancel your reservation.

For Denali Extensions

\$550 deposit is due at time of booking the extension. Additional 60% of total cost is due 120 days prior to the departure date on your voyage. Final payment is due 90 days prior to departure.

Number of Days Prior to Expedition Start	Per Person Cancellation Fee
120 or more days	\$550
119–90 days	60% of Denali cost
89–0 days	100% of Denali cost

United States Tour Operators Association \$1 Million Travelers Assistance Program



Program Lindblad Expeditions, as an Active Member of USTOA, is required to post \$1 Million with USTOA to be used to reimburse, in accordance with the terms and conditions of the USTOA \$1 Million Travelers Assistance Program, the advance payments of Lindblad Expeditions customers in the unlikely event of Lindblad Expeditions bankruptcy, insolvency or cessation of business. Further, you should understand that the \$1 Million posted by Lindblad Expeditions may be sufficient to provide only a partial recovery of the advance payments received by Lindblad Expeditions. More details of the USTOA Travelers Assistance Program may be obtained by writing to USTOA at 345 Seventh Avenue, Suite 1801, New York, New York 10001, or by email to information@ustoa.com or by visiting their website at www.USTOA.com.

We are proud to be a Founding Member of



Adventure Collection—a family of the world's most trusted and experienced active travel companies. Each member company of Adventure Collection is dedicated to enriching the lives of its guests and to giving back to the areas in which it travels. For more information visit www.AdventureCollection.com.



TRAVEL PLANNING WITH A DIFFERENCE

Half of travel planning is learning what you don't know and generating questions. The other half is getting answers.

When you call **1.800.EXPEDITION**, you can ask for any one of our Expedition Specialists who have been on our Alaska expeditions. They are full members of the Lindblad Expeditions team—students of the natural world and born explorers, not trained call center telemarketers.

SO WHY NOT TAKE ADVANTAGE OF THEIR EXPERTISE? Don't hesitate to call with your questions—they're equipped to provide answers based on their knowledge and personal experience.

Ask them about Alaska, how we explore there, our ships, our itineraries, and more. We think you'll find the conversation rewarding.

©2017 Lindblad Expeditions. Lindblad Expeditions and the Eye are the trademarks of Lindblad Expeditions. All rights reserved.

NATIONAL GEOGRAPHIC and the Yellow Border are the trademarks of the National Geographic Society. All rights reserved.

Photo Credits: Marc Cappelletti, Ralph A. Clevenger, Alexandra C. Daley-Clark, Rab Cummings, Jennifer Davidson, Kyle Furey, Douglas Gould, Mike Greenfelder, Eric Guth, Rolf Hicker/Alamy, Justin Hofman, Ralph Lee Hopkins, Sven-Olof Lindblad, Jeff Litton, Jeff Mauritzen, Carlos J. Navarro, Ron Niebrugge/Alamy, Michael S. Nolan, Pete Pederson, Rich Reid, Marco Ricca, Angela Robinson, Krista Rossow, Susan Seubert, Paul Souders, David Spiegel, Ian Strachan, Rikki Swenson, David Vargas, Caitlyn Webster.

For Reservations: Contact your travel advisor or Lindblad Expeditions

1.800.EXPEDITION
(1.800.397.3348)

Reservation Hours:

**Monday - Friday 9am - 10pm ET,
Saturday & Sunday 10am - 5pm ET**

Lindblad Expeditions, Inc.

96 Morton Street, New York, NY 10014

Phone: 212.261.9000

Email: explore@expeditions.com

For additional information and online reservations, visit us on the Web:

www.expeditions.com.



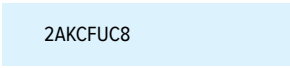
96 Morton Street
New York, NY 10014

PRSR STD
U.S. POSTAGE
PAID
LINDBLAD
EXPEDITIONS

Account Number:



Expedition Code:



2AKCFUC8

1.800.EXPEDITION | WWW.EXPEDITIONS.COM

♻️ Printed on 10% recycled content paper with soy-based inks. We recommend that you pass this along for others to enjoy or recycle.

AKC-118



ESCAPE THE ORDINARY FOR 6 DAYS OF ACTIVE ADVENTURE

Hike! Bike! Raft! Paddleboard! Flightsee! Experience wildlife! Our newest itinerary, **Wild Alaska Escape** packs a whole lot of action into one workweek. Starting at just \$4,290. See page 30-31 for day-by-day details.