

# UPPER AMAZON

VENTURE INTO THE  
HEADWATERS OF  
THE MIGHTY RIVER

DISCOVER RARE  
WILDLIFE

REWARDING  
ENCOUNTERS  
WITH PEOPLE  
OF THE RIVER

**PLUS!**  
NEW WILD  
PERU ESCAPE

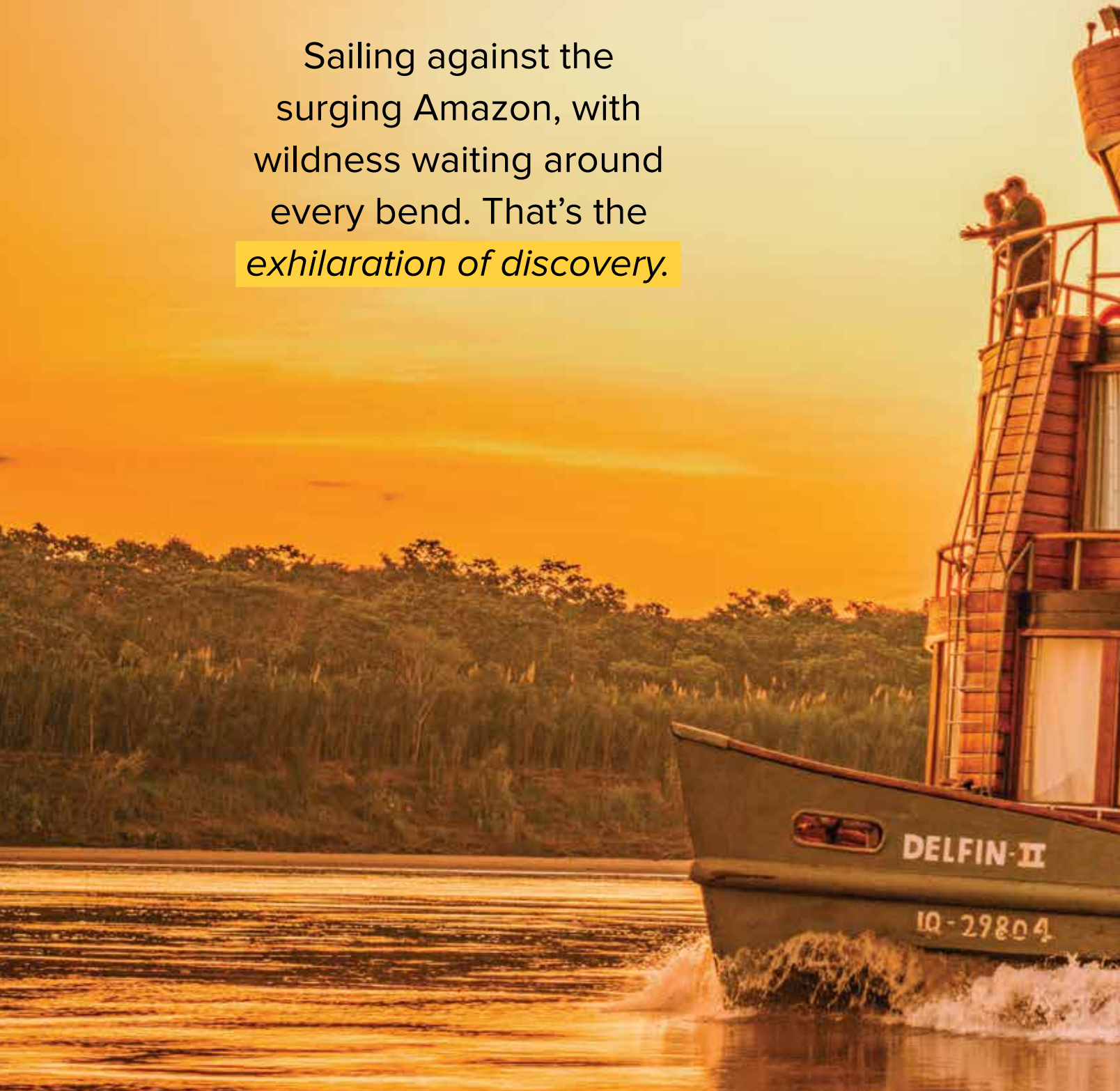
EXPLORING PERU'S PACAYA-SAMIRIA RESERVE  
ABOARD *DELFIN II* | 2021-22



Nauta, PERU

4.51° S, 73.56° W

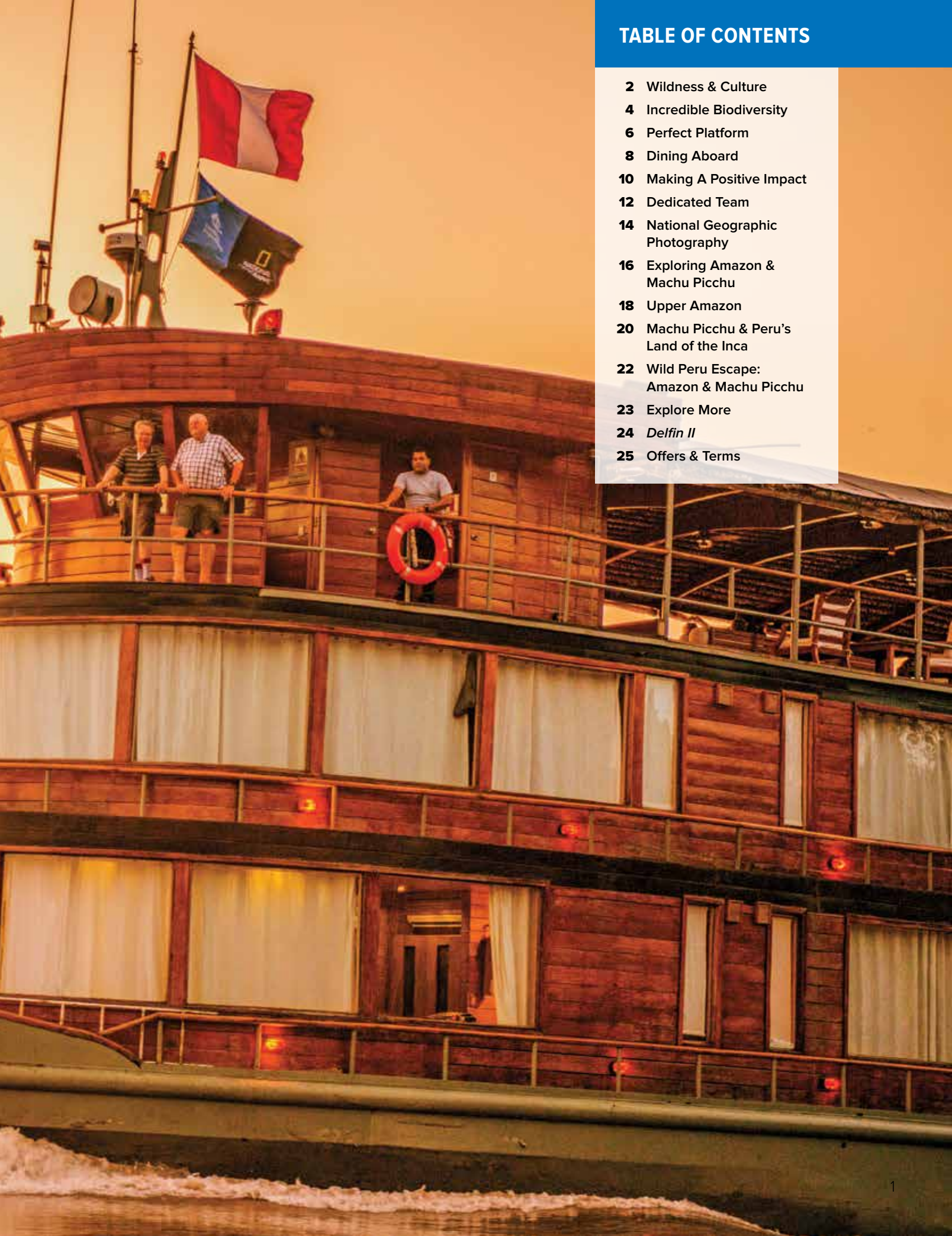
Sailing against the  
surging Amazon, with  
wildness waiting around  
every bend. That's the  
*exhilaration of discovery.*



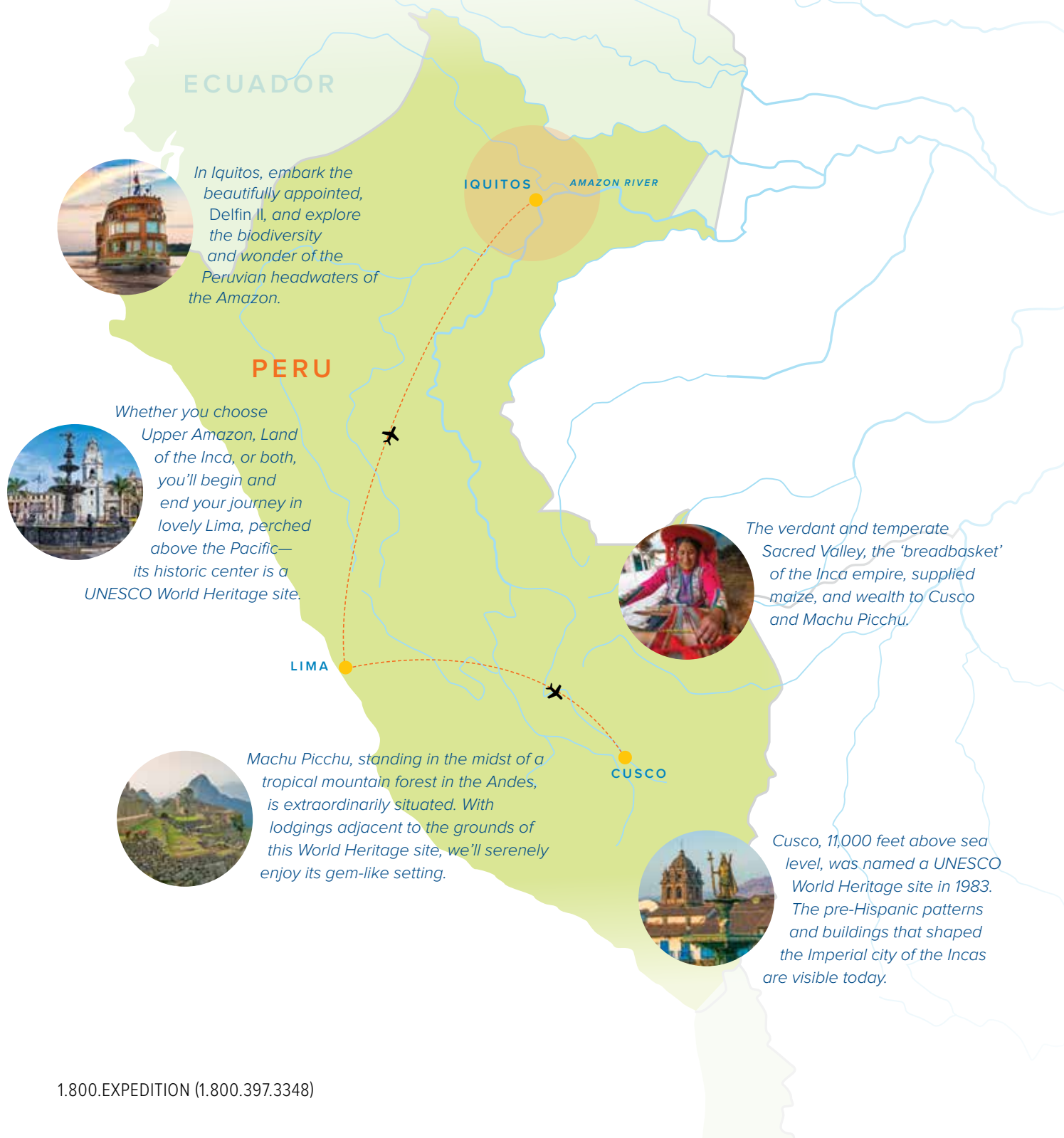


## TABLE OF CONTENTS

- 2** Wildness & Culture
- 4** Incredible Biodiversity
- 6** Perfect Platform
- 8** Dining Aboard
- 10** Making A Positive Impact
- 12** Dedicated Team
- 14** National Geographic Photography
- 16** Exploring Amazon & Machu Picchu
- 18** Upper Amazon
- 20** Machu Picchu & Peru's Land of the Inca
- 22** Wild Peru Escape: Amazon & Machu Picchu
- 23** Explore More
- 24** *Delfin II*
- 25** Offers & Terms



# TWO WORLD WONDERS,



*In Iquitos, embark the beautifully appointed, Delfin II, and explore the biodiversity and wonder of the Peruvian headwaters of the Amazon.*

*Whether you choose Upper Amazon, Land of the Inca, or both, you'll begin and end your journey in lovely Lima, perched above the Pacific—its historic center is a UNESCO World Heritage site.*

*Machu Picchu, standing in the midst of a tropical mountain forest in the Andes, is extraordinarily situated. With lodgings adjacent to the grounds of this World Heritage site, we'll serenely enjoy its gem-like setting.*

*The verdant and temperate Sacred Valley, the 'breadbasket' of the Inca empire, supplied maize, and wealth to Cusco and Machu Picchu.*

*Cusco, 11,000 feet above sea level, was named a UNESCO World Heritage site in 1983. The pre-Hispanic patterns and buildings that shaped the Imperial city of the Incas are visible today.*



# ONE DIVERSE COUNTRY



In 2011, 100 million people worldwide elected the Amazon as one of the New Seven Wonders of Nature and four years prior, in 2007, global citizens voted Machu Picchu one of the New Seven Wonders of the World. Both are in the same fantastically diverse country: Peru. And now, you can choose to discover one or both—we offer two enriching itineraries in the region, and if you have the time, they can be effortlessly combined into one 16-night comprehensive land and river experience.

Our **Upper Amazon** voyage aboard the *Delfin II* focuses on the Pacaya–Samiria National Reserve—a pristine swath of jungle stretching more than five million acres, and harboring some of the Amazon’s most diverse flora and fauna. Protean in form, this riverine region floods its banks, carves new tributaries, and then retreats to reveal inviting forest clearings and beaches—all in response to Andean snows. The Peruvian Amazon also offers us an unexpected highlight: time with the *ribereños* (traditional river people).



On our **Machu Picchu & Peru’s Land of the Inca** adventure you’ll progress from sea level, to the temperate Sacred Valley and descend to Machu Picchu, perched in the eyebrow of the jungle. At Machu Picchu’s moderate elevation, you’ll revel in the soaring vistas, the monumental stone terraces that climb like sinuous staircases to the mountaintops. And once fully acclimatized, you’ll explore high-altitude Cusco, which like Rome or Athens is an imperial city, with its own exquisite architectural legacy.



## FALL UNDER THE SPELL OF THE WORLD'S MOST BIODIVERSE RAINFOREST







**THE DRAMA OF THE PASSING SCENES. THE THRILL OF THE** invisible. There's a sense of enchantment about being out on the Amazon, cruising clear water, stained black with tannins mirroring the sky. A source of life and wonder, the river is also a thoroughfare, with a passing fisherman in a carved dugout, a larger canoe with children on their way to school, and trees so close in these headwaters that you can reach out and touch them.

Actively explore it. Go on one or more outings each day following the lead of a naturalist. Hike, kayak, and explore via three nimble skiffs, custom-made to venture into the flooded forest where wildlife thrives. Eagle-eyed skiff drivers help us develop our jungle eyes—to find the elusive species that make the Amazon so fascinating. We might see pink and grey dolphins feeding while chattering terns dive for prey they've chased to the surface. Or in the brown-water tributaries, spot common squirrel monkeys, a yellow-handed titi; or perhaps a small group of shy monk saki monkeys will show themselves. Or find myriad bird species—like the motmot, striated herons, blue-and-yellow, and scarlet macaws, along with diverse kingfishers, flycatchers, weaverbirds, and more. And once the night curtain drops on a spectacular sunset, a symphony begins, more sonically lush and dense than the world's finest concert halls could contain.



“For the afternoon we stayed out late to look for caimans. We found so much more. From a tropical screech owl to great potoo to two common potoos, one that let us get so close we could almost touch it. Oh yes, and both spectacle and black caiman were found. A great end to another awesome day exploring the Amazon Basin on board the *Delfin II*.”

— LINDA BURBACK  
Naturalist/Certified Photo Instructor

## THE PERFECT BASE CAMP: *DELFIN II*

AS MUCH OF THE RIVER AS ON IT AND LOCALLY BUILT, *DELFIN II*'S iron exterior is clad in tropical hardwoods, and her interior gleams with wood floors and lacquered palm ceilings. Wood stairs floating between decks, and lazily turning ceiling fans add the right tropical notes, while the AC invisibly cools and dehumidifies. The lounge, center of our life as an expedition community, features a welcoming open bar and inviting seating. The dining room is decorated with locally crafted lanterns, hanging over an impressive central buffet table, carved from a massive tree root found floating in the river and installed before the ship's windows were—three walls of windows keep us connected to the non-stop panorama outside. In fact, the prestigious Relais & Châteaux recently inducted the ship into its hotel group, recognizing its commitment to local nature, culture, and its exquisite Amazonian-Peruvian cuisine. And the airy, supremely comfortable cabins are the perfect ending to active days. Slip into bed, well-appointed with crisp, cotton linens, and drift off as you gaze out at the starry night through the generous, river-framing window wall. Our base for daily explorations, and to which we happily return, *Delfin II* has a distinct advantage over any land-based camp—she moves, giving you an ever-varied experience of the Amazon's multiple landscapes and wonders.

▶ Please find cabin and ship details on page 24.

“Coming to the Amazon you need to be prepared in a lot of different ways. We're going into places that a lot of people never get to. We go up the Ucayali or the Marañón River and then get even farther into small tributaries, what they call blackwater streams which instead of carrying silt they're carrying tannins from the forest. It's fresh out here, the light is just golden. The temperature is perfect, it's effortless—you sit there comfortably with your binoculars and slow down and the Amazon is just wonderful.”

— CINDY MANNING  
Expedition Leader







EXPERIENCE THE AMAZON  
WITH ALL YOUR SENSES







**MODERN PERUVIAN CUISINE IS A FUSION OF** flavors, a meeting of tastes from the Inca and European, Asian, and African immigrants, all with an emphasis on what is available in this geographically diverse land. As you travel along the Amazon, you experience this internationally acclaimed cuisine (the first to earn a Cultural Heritage of the Americas award) from the comfort of a welcoming dining room, crafted

by local artisans. Wake up to a rainbow of fresh-squeezed juices, experience seasonal ingredients relatively unknown outside the region—like the superfood camu camu and the tomato-like cocona—and end your night with chocolate placed on your pillow. Take the recipes back with you, too, as you'll have the opportunity to make ceviche, Peru's national dish, and a pisco sour, its national drink.

# MEET EMPOWERED LOCAL ARTISANS & COMMUNITIES

**THROUGH OUR PARTNERSHIP WITH INNOVATIVE NONPROFIT** Minga Peru, you have the chance to visit and support indigenous women who have developed a sustainable living creating beautiful handcrafts. See firsthand how Minga Peru, with the support of Lindblad-National Geographic travelers like you, has developed a network of local women leaders, known as *promotoras*, to empower their communities along the Pacaya-Samiria Reserve. Minga developed a successful radio program that broadcasts stories on the production and marketing of handcrafts, leading to a more sustainable living for countless artisans across the Marañón, Ampiyacu and Tahuayo rivers. Minga invites only Lindblad-National Geographic guests into these communities, giving you a highly personal opportunity to talk to these women and their families, and gain a deeper understanding of their day-to-day lives, and how their work has changed their fates.



## **NATIONAL GEOGRAPHIC EXPERT ELIANA ELIAS**

Co-Founder and Executive Director of Minga Peru, National Geographic Grantee Eliana has worked for over two decades to change lives in the Peruvian Amazon through communications, women's leadership, and sustainable community development.

**Travel with Eliana on select departures. Call an Expedition Specialist for details.**

▶ Visit [expeditions.com/minga](https://expeditions.com/minga) to learn more.

**“Listening to the radio program *Bienvenida Salud!* has strengthened me and motivates me to continue working as an artisan. Now, I see the value that the artisan work has as an economic impact resource for my family. The visits from guests of Lindblad-National Geographic help us with the sales. This money helps me in many situations like when my son gets sick and I have to buy his medicine or when I need supplies to fix my little house. Being an artisan has helped me in every moment of my life, and that is why I feel proud.”**

**—MAGALI TARICUARIMA  
NASHNATE**

30-year-old mother of 4 from the San Francisco community in the Marañón River









OUR TEAM IS ACE AT  
DOING WHAT IT TAKES







**BECAUSE YOU DESERVE AN EXCEPTIONAL EXPERIENCE,** our team will do whatever it takes—from posting a naturalist on the top deck at all times to scan the jungle for wildlife, hiking at your pace, offering a cooling swim in the river, to deploying kayaks to explore a narrow tributary. Our team has the knowledge and passion for the Amazon that will kindle yours. You'll explore under the expert guidance of a veteran expedition leader, eagle-eyed local naturalists, a Lindblad-National Geographic certified photo instructor, and a wellness specialist. One naturalist for every ten guests and a spectrum of specialties—biology, ornithology, ichthyology, and lepidopterology—ensures a daily diversity of interest and personalities for you.



Since our naturalists were born in towns along the riverbanks and educated in schools in Iquitos, you'll enjoy an authentic connection to the people and the cultures of the region. Discover what it was like to have been a child here, or to have the Amazon as your cultural heritage.

WHAT WILL YOU CREATE WITH  
LINDBLAD-NATIONAL GEOGRAPHIC  
CERTIFIED PHOTO INSTRUCTORS  
TO ASSIST YOU?





**WHILE YOU'RE EXPLORING THE AMAZON, YOU'LL HAVE THE** benefit of a Lindblad-National Geographic certified photo instructor (CPI) at your side and at your service. He or she can help you with anything from camera settings to the basics of composition. Now, every guest—from iPhone camera users to advanced hobbyists—can stand side-by-side with skilled photographers, pick up tips in the field, and take great photos. Our CPIs are also trained naturalists, so they'll help you better understand wildlife behavior, too. Whether you're choosing a shutter speed to capture a monkey leaping between treetops in the jungle canopy or shooting a family portrait against a killer backdrop, in-the-moment tips from accomplished pros will help you get your best photos ever.



### AMAZON PHOTO EXPEDITIONS

We add a National Geographic photographer—the ones who shoot the magazine stories you know and love—to give photo enthusiasts an exclusive advantage on select departures.

#### KIKE CALVO

Mar. 26, 2022

Apr. 2, 2022

▶ Visit [expeditions.com/amazphoto](https://expeditions.com/amazphoto) to learn more about these National Geographic photographers.



A scenic view of a river at sunset. The sun is low on the horizon, casting a warm orange glow across the sky and reflecting on the water. A large, multi-decked boat is on the river, and the background is a dense forest. The foreground is framed by large green leaves.

## THREE DIFFERENT OPTIONS TO EXPLORE THE AMAZON & MACHU PICCHU



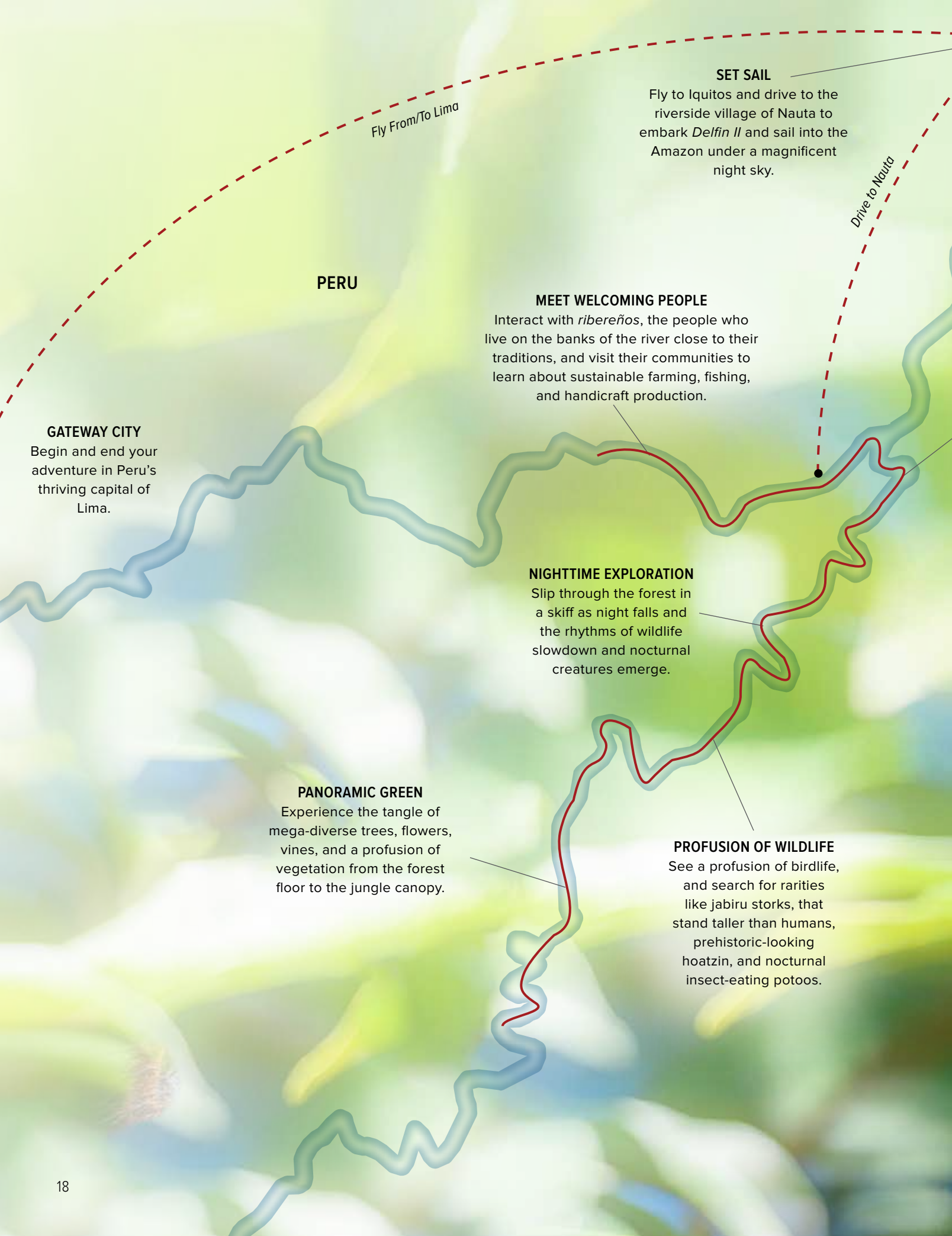
THE UPPER AMAZON IS HOME TO SOME OF THE GREATEST mammalian, avian, flora, and fish diversity on Earth. It is among the planet's last remaining true wilderness and only accessible by ship. Go aboard the elegant riverboat *Delfin II*, built to sail into even the shallow reaches, and outfitted with three narrow skiffs that allow us to venture into the flooded forest where wildlife thrives. Visit villages along the river to meet the people of the reserve, see or buy their attractive handicrafts, and learn about their ways of life. Enjoy an authentic connection through your guides and skiff pilots, many who grew up in these villages.

Choose to focus on the Amazon over 10 days, with ample time to steep in its wildness and venture deep into this flooded forest preserve. Or take advantage of your proximity to add another iconic Peruvian destination—Machu Picchu—on a well-curated, in-depth 8-day itinerary that can be combined as a back-to-back immersive experience. Linger in the sanctuary late into the afternoon, plus explore the Sacred Valley of the Inca and experience the vitality of Inca and Peruvian culture in contemporary Lima and imperial Cusco.

Want to experience the best of Peru but short on time? Explore the Amazon and Machu Picchu in 9 action-packed days on our new *Wild Peru Escape*.

### EXPEDITION HIGHLIGHTS

- Hike, kayak, and explore the wild flooded forest at the headwaters of the Amazon with expert local guides
- See elusive wildlife, including pink river dolphins, monk saki monkeys, piranhas, and scarlet macaws
- Have mutually rewarding encounters with *ribereños*, natives of the reserve who continue to live close to their ancestral traditions
- Discover incredible land-of-the-lost jungle flora including towering ceiba trees and gigantic lily pads amid lakes framed by dense rainforest
- Walk through fabled Machu Picchu
- Discover Cusco's varied influences and visit the Sacred Valley of the Inca



Fly From/To Lima

### SET SAIL

Fly to Iquitos and drive to the riverside village of Nauta to embark *Delfin II* and sail into the Amazon under a magnificent night sky.

Drive to Nauta

## PERU

### GATEWAY CITY

Begin and end your adventure in Peru's thriving capital of Lima.

### MEET WELCOMING PEOPLE

Interact with *ribereños*, the people who live on the banks of the river close to their traditions, and visit their communities to learn about sustainable farming, fishing, and handicraft production.

### NIGHTTIME EXPLORATION

Slip through the forest in a skiff as night falls and the rhythms of wildlife slowdown and nocturnal creatures emerge.

### PANORAMIC GREEN

Experience the tangle of mega-diverse trees, flowers, vines, and a profusion of vegetation from the forest floor to the jungle canopy.

### PROFUSION OF WILDLIFE

See a profusion of birdlife, and search for rarities like jabiru storks, that stand taller than humans, prehistoric-looking hoatzin, and nocturnal insect-eating potoos.



## ITINERARY: UPPER AMAZON ABOARD *DELFIN II*

10 DAYS/9 NIGHTS—ABOARD *DELFIN II*

FROM: \$7,550

Visit [expeditions.com](https://expeditions.com) for all categories, current rates, and details.

### AMAZON EXPLORATION

Thrill at navigating the mighty river. Kayak and take narrow, nimble skiffs into the canopy-covered tributaries that appear as the water level rises, then disembark to explore the jungle on foot.

### EXPEDITION DETAILS

2021 Dates: Jul. 3, 10, 24, 31; Aug. 7, 14; Oct. 30; Nov. 6; Dec. 25

2022 Dates: Jan. 15, 22, 29; Feb. 19, 26; Mar. 26 📷; Apr. 2 📷, 9; May 21;

Jul. 2, 9, 16, 23; Sep. 3, 17, 24; Oct. 1; Nov. 5, 12; Dec. 10, 17

📷 Photo Expeditions

### SPECIAL OFFERS:

- **Save 10%** when you combine your Upper Amazon voyage with an expedition to Galápagos.
- Or, **save 10%** when combining Upper Amazon with Machu Picchu & Peru's Land of the Inca.

For additional offer details, see page 25 or call.

### ITINERARY AT A GLANCE

Day 1: U.S./Lima, Peru  
 Day 2: Lima/Iquitos/Nauta/Embark  
 Days 3-8: Pacaya-Samiria National Reserve  
 Day 9: Disembark/Nauta/Iquitos/Lima  
 Day 10: Lima/U.S.

▶ Visit [expeditions.com/Amazon](https://expeditions.com/Amazon) for a sample day-by-day itinerary. Or call to speak with an Expedition Specialist.

### OPTIONAL EXTENSIONS

Extend your stay with two nights at Belmond Miraflores Park, Lima. Ask for details.





## PERU

### LIMA

#### DAY 1 / DAY 8

Arrive in Lima, Peru's thriving capital. Upon your return, celebrate with a private farewell lunch and discover the pre-Columbian treasures at the Larco Museum.



## ITINERARY: MACHU PICCHU & PERU'S LAND OF THE INCA

**8 DAYS/7 NIGHTS LAND EXCURSION  
FROM: \$6,200**

Visit [expeditions.com](https://expeditions.com) for all categories, current rates, and details.

### EXPEDITION DETAILS

DATES: 2021-2022: Year-round, weekly departures.

#### SPECIAL OFFER:

- **Save 10%** when you combine Machu Picchu & Peru's Land of the Inca with an expedition to the Upper Amazon.
- For additional offer details, see page 25 or call.

### SACRED VALLEY & MACHU PICCHU DAYS 2-5

Spend two nights in the Sacred Valley. Watch twilight descend on Machu Picchu after the crowds have disappeared and overnight at the historic Belmond Sanctuary Lodge.

### ITINERARY AT A GLANCE

Day 1	U.S./Lima, Peru
Day 2	Lima/Cusco/Sacred Valley of the Inca
Day 3	Sacred Valley of the Inca
Day 4	Sacred Valley/Machu Picchu
Day 5	Machu Picchu/Cusco
Day 6	Cusco
Day 7	Cusco/Lima
Day 8	Lima/U.S.

- ▶ New for Peru 2022, stay two nights (Days 1-2) at Belmond Miraflores Park Lima. Visit [expeditions.com/peru](https://expeditions.com/peru) or call for day-by-day itineraries.

### NATIONAL GEOGRAPHIC GUEST SPEAKER

Gain insight from National Geographic Grantee, Peter Frost, or a colleague on our departures.

### CUSCO DAYS 6-7

Explore the rich culture and heritage of Cusco and surroundings from our base in the colonial center of this Inca imperial city.

## WILD PERU ESCAPE: AMAZON & MACHU PICCHU

9 DAYS/8 NIGHTS—ABOARD *DELFIN II* + LAND EXCURSION

FROM: \$7,990 Visit [expeditions.com](https://expeditions.com) for all categories, current rates, and details.

### EXPEDITION HIGHLIGHTS

- Spend a full day exploring fabled Machu Picchu, royal retreat of Pachacuti.
- Discover the cobbled lanes and monuments of Cusco, imperial capital of the Inca.
- Journey to Iquitos and the Amazon for a five-day voyage aboard the 28-guest *Delfin II*.
- Explore the flooded forest of Pacaya-Samiria National Reserve with a team of experienced local naturalists.
- Spot elusive Amazon wildlife, including pink dolphins, monk saki monkeys, piranhas, and scarlet macaws.

### ITINERARY AT A GLANCE

Day 1	U.S./Lima, Peru	Day 5	Cusco/Iquitos/Embark
Day 2	Lima/Cusco/Sacred Valley	Days 6-8	Upper Amazon aboard <i>Delfin II</i>
Day 3	Machu Picchu		
Day 4	Sacred Valley/Cusco	Day 9	Disembark/Iquitos Lima/U.S.

### EXPEDITION DETAILS

2021 Dates: Aug. 21; Oct. 16

2022 Dates: Feb. 12; May 28; Aug. 27; Oct. 29

#### SPECIAL OFFER:

- **Save 10%** when traveling with a group of 6 or more on select departures. For additional offer details, see page 25 or call.

### OPTIONAL EXTENSIONS

Add a two-day pre-voyage extension in vibrant, cosmopolitan Lima. Visit [expeditions.com/seelima](https://expeditions.com/seelima) for details.

- ▶ Visit [expeditions.com/wildperu](https://expeditions.com/wildperu) for a sample day-by-day itinerary. Or call to speak with an Expedition Specialist.





# THERE'S MORE TO EXPLORE— DISCOVER ANOTHER NATURAL TREASURE



**MAKE THE MOST OF YOUR TRAVEL TIME IN SOUTH AMERICA BY ADDING** another capital of wildness to your itinerary. Explore the otherworldly Galápagos Islands and discover a vastly different wilderness in this volcanic archipelago amid white-sand beaches and active, highly visible wildlife that has no instinct to flee humans. You'll go with top experts and local guides, and we'll ensure a seamless connection to or from your expedition. **Plus, you'll save 10% on your voyage when combining this expedition with the Amazon.**

## ADD GALÁPAGOS

**18 DAYS/17 NIGHTS—ABOARD *NATIONAL GEOGRAPHIC ENDEAVOUR II* AND *DELFIN II***

**FROM: \$14,580** Visit [expeditions.com](https://expeditions.com) for all categories, current rates, and details.

Seamlessly link your Upper Amazon expedition with a voyage to Galápagos aboard the *National Geographic Endeavour II*. Refined over 50+ years in the region, our classic 10-day Galápagos expedition is a deeply rewarding immersion in the archipelago's magic. Explore the islands, terrain, and wildlife—as well as the vibrant life of Galápagos' ocean, an integral part of our explorations. Hike, paddleboard, kayak, and snorkel. Share the beach with sea lions, hike in the highlands among giant tortoises, and see all of the islands' strange and wonderful wildlife.

### ITINERARY AT A GLANCE

Day 1	Depart U.S./Guayaquil, Ecuador
Day 2	Guayaquil/Galápagos/Embark
Days 3-8	Galápagos aboard <i>National Geographic Endeavour II</i>
Days 9	Galápagos/Disembark/Guayaquil
Days 10-17	As per Upper Amazon itinerary on page 19
Day 18	Lima/U.S.

▶ Visit [expeditions.com/galaet](https://expeditions.com/galaet) for a full day-by-day of the Galapagos itinerary.





Clockwise from top: Delfin II on the river; the dining room provides big views and outstanding cuisine; spacious suites offer comfort and panoramic views.

## DELFIN II

**CAPACITY:** 28 guests in 14 outside suites.

**REGISTRY:** Peru. **OVERALL LENGTH:** 120 feet.

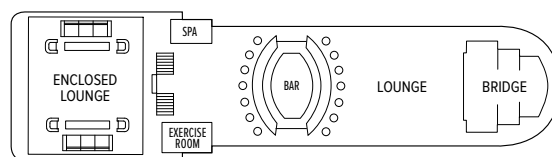
**PUBLIC AREAS:** With sweeping views, public areas include an air-conditioned presentation room, open-air lounge and bar up top, and dining room with a 270-degree panorama. With a small library, exercise room and spa. Open Bridge, where you are welcome to visit and watch the river go by.

**MEALS:** The air-conditioned dining room's large windows provide panoramic views. Beautifully prepared meals are served in a single seating with unassigned tables. Often special dishes will include sustainable products of the rain forest and sauces made with exotic regional fruits.

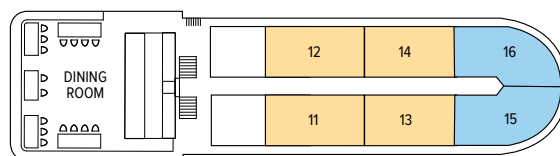
**SUITES:** Elegant, air-conditioned guest suites on the Main and Upper Decks all offer exceptional vistas. Each spacious suite has a minimalist décor with a luxurious overtone.

**EXPEDITION EQUIPMENT:** 10-person skiffs—with individual seat cushions and plenty of leg room. Fleet of safe, nimble kayaks for up-close, personal exploration. Rain ponchos are kept handy in the skiffs. Rubber boots are provided when needed.

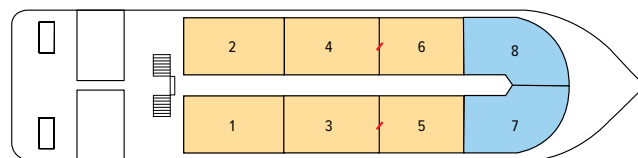
**SEE MORE:** Learn more about *Delfin II* at [expeditions.com/delfinii](https://expeditions.com/delfinii)



OBSERVATION DECK



UPPER DECK



MAIN DECK

↗ indicates adjoining cabins

**SUITES:** UPPER & MAIN DECK #1-6; 11-14 — Most suites have two twin beds which can convert to a king. Each includes a large view window, a closet, easy chair and desk. Bathrooms include a large shower, separate toilet and sink area. Suites 4/6 and 3/5 are available as interconnecting for friends and family traveling together.

**MASTER SUITES:** UPPER & MAIN DECK #7, 8, 15, 16 — The Master Suites feature all of the amenities listed above plus oversized windows which provide incredible 90 degree views. The Master Suites on the Main Deck and Upper Deck feature two twin beds which can convert to a king.

**SOLO OCCUPANCY & SHARED ACCOMMODATIONS:** Due to the limited number of cabins available, solo occupancy and shares are on a request basis only; please call for availability and rates.



## PRIVATE CHARTER: SHARE THE AMAZON WITH YOUR FRIENDS & FAMILY

Imagine sharing the lovely *Delfin II* with your nearest and dearest. On a private charter, you can. Our expedition team—veteran expedition leader, naturalists, Lindblad-National Geographic certified photo instructor and local guides—and superb hotel staff are exclusively at your service. Whether it's celebrating a milestone event with friends, or gathering the clan, our Charter Concierge will help you orchestrate your ideal expedition. Group arrangements are also available. For information, please contact Karen Kuttner-Dimitry, Vice President of Sales, at 1-800-783-6656 x 1030, or via email [karenk@expeditions.com](mailto:karenk@expeditions.com).

## INCLUSIVE PRICING MEANS VALUE + EXPERIENCES

We include just about everything you have the opportunity to do as part of your expedition aboard ship and ashore. The only things not included are those of a personal nature—internet usage, wellness treatments and other specialized arrangements.

## MAKE THE MOST OF YOUR TIME IN THE REGION AND SAVE 10%

When you combine your Upper Amazon voyage with Galápagos or Machu Picchu & Peru's Land of the Inca.

## TRAVELING AS A GROUP

Book a group of six or more on select departures of our Wild Peru Escape and save 10%. Take advantage of this great savings, while enjoying traveling with your friends and family. This savings is applicable to voyage fares only and is not valid on extensions or airfare and may not be combinable with other discounts. Deposit, final payments, and cancellation policies for group travel vary from our regular policies.

### ABOARD SHIP

- ✓ All meals, and non-alcoholic beverages
- ✓ Cappuccinos, lattes & complimentary refillable water bottle
- ✓ 24-hour coffee, tea & soda
- ✓ Hors d'oeuvres & snacks during recap
- ✓ Sauna & Fitness Center
- ✓ Fully stocked library
- ✓ The guidance and company of our expedition staff

### ASHORE

- ✓ Meals on land, as indicated in itinerary
- ✓ Special access permits, park fees, port taxes
- ✓ Transfers to and from group flights
- ✓ The expertise of our expedition staff

### ACTIVITIES

- ✓ All shore activities
- ✓ Skiff and kayak explorations
- ✓ Snorkeling, including wetsuits, masks, fins
- ✓ Lectures & presentations in the lounge

Photo Credits: R. Aaron Raymond, Alamy, Andy Bardon, Alexandra Daley-Clark, Jennifer Davidson, Jose R. Calvo, Kike Calvo, David Cothran, Adam Cropp, David Doublet, Jan Butchofsky Houser, iStock, Jonathan Irish, Keenpress, Rich Kirchner, Ralph Lee Hopkins, Richard Maack, Michael Melford, Emily Mount, Photoshot Holdings Ltd/Alamy, Marco Ricca, Rodrigo Rodrich, Krista Rossow, Michael S. Nolan, Shutterstock, Jack Swenson, Vincent Truchet, David Vargas, Craig Wilson

## RESERVATION INFORMATION

**Terms & Conditions:** For complete terms and conditions please visit [www.expeditions.com/terms](http://www.expeditions.com/terms)

**Pricing:** For best pricing book early. Prices quoted in this brochure are valid as of the time of printing, are subject to modification based on select departures and availability at time of booking, and are not guaranteed until booking and required deposit is made. Under normal conditions, the total expedition price is guaranteed at the time of booking. However, our expedition pricing is determined far in advance of initial departure on the basis of then-existing projections of fuel and other costs. In the event of increases in those costs including, but not limited to, increases in the price of fuel, currency fluctuations, increases in government taxes or levies, or increased security costs, we reserve the right to adjust the price of your expedition or add a surcharge to cover such unexpected increases. We will always provide an explanation of the reason for increase in pricing. Visit [expeditions.com](http://expeditions.com) or call for the most up-to-date pricing.

**Pricing Includes:** All accommodations aboard ship or in hotels per itinerary or similar; all meals and nonalcoholic beverages aboard ship; meals on land as indicated, accompanied by nonalcoholic beverages; shore excursions; sightseeing and entrance fees; special access permits; transfers to and from group flights; use of snorkeling equipment and wetsuits (where applicable); use of kayaks and/or stand-up paddleboards (where applicable); tips (except to ship's crew); taxes and service charges; services of a ship physician and services of our expedition staff. Unused services or items included in our programs are non-refundable.

**Not Included:** Air transportation, extensions, passport, visa, immigration fees, meals not indicated, travel protection plan, items of a personal nature, such as alcoholic beverages, internet access, voyage chronicle, and laundry. Gratuities to the ship's crew are at your discretion.

**Airfare:** For all programs, airfare is an additional cost unless otherwise indicated. We will gladly assist in making your air arrangements for a \$50 per person service fee.

**Reservations:** To reserve your place, an advance payment is required at the time of reservation. Receipt of advance payment indicates your acceptance of the terms and conditions. Visit [expeditions.com/terms](http://expeditions.com/terms) for complete details.

**Final Payment:** Final payment is due in full 120 days prior to departure. Payment schedules may vary for certain longer voyages due to high demand for these voyages. We reserve the right to cancel your reservation if payment has not been received by final payment due date.

**Travel Protection Plan:** We strongly recommend that you take advantage of our Travel Protection Plan. This plan offers comprehensive coverage to protect you from cancellation fees, costs incurred due to trip delays/interruption, medical assistance, and damaged or lost baggage, and provides medical assistance and evacuation during your travels. Our Travel Protection Plan is available for U.S. residents only and may be purchased any time prior to final payment due date. If you are not satisfied for any reason, you may return your plan within 10 days after purchase. Your premium will be refunded if canceled within 10 days, provided you have not already departed on the trip or filed a claim. When so returned, the coverage under the plan is void from the original date of purchase.

**Responsibility and Other Terms & Conditions:** Certain provisions concerning, among other things, limitations of Lindblad Expeditions' and National Geographic Expeditions' (a division of National Geographic Partners, LLC) liability for loss of property, injury, illness, or death during the voyage will be provided to all guests on the ship's ticket sent prior to departure, and are also available on our website at [expeditions.com/terms](http://expeditions.com/terms), or upon request. By registering for a trip, the guest agrees to all such terms and conditions.

**Note:** Itineraries and prices listed in this brochure are as of publication date and are subject to change.

**Smoking and Vaping Policy:** Smoking and Vaping are allowed only in designated outdoor areas.

**Cancellation Policy:** Call for details or visit [expeditions.com/book-assured](http://expeditions.com/book-assured).

©2021 Lindblad Expeditions

Lindblad Expeditions and the Eye are the trademarks of Lindblad Expeditions. All rights reserved.

©2021 National Geographic Partners, LLC. All Rights Reserved.

NATIONAL GEOGRAPHIC and the Yellow Border are trademarks of National Geographic Society and used with permission.

**For Reservations: Contact your travel advisor or Lindblad Expeditions**

**1.800.EXPEDITION (1.800.397.3348)**

**Reservation Hours: Monday – Friday 9am – 9pm ET**

**Saturday & Sunday 10am – 5pm ET**

**Lindblad Expeditions, Inc., 96 Morton Street, New York, NY 10014**

**Phone: 212.261.9000 • Fax: 212.265.3770**

**For additional information and online reservations, visit us on the Web: [www.expeditions.com](http://www.expeditions.com)**



Account Number:

**1.800.EXPEDITION | WWW.EXPEDITIONS.COM**

 Printed on 10% recycled content paper with soy-based inks. We recommend that you pass this along for others to enjoy or recycle.

AMZ-021

**NEW WILD PERU ESCAPE: AMAZON & MACHU PICCHU (See page 22)**

