

# ANTARCTICA

## SOUTH GEORGIA & THE FALKLANDS

ANNOUNCING  
THE YEAR  
OF THE BIRD



ABOARD NATIONAL GEOGRAPHIC EXPLORER  
AND NATIONAL GEOGRAPHIC ORION | 2018-20



Lindblad  
Expeditions





Lindblad  
Expeditions



NATIONAL  
GEOGRAPHIC™

Lindblad Expeditions and National Geographic have joined forces to further inspire the world through expedition travel. Our collaboration in exploration, research, technology and conservation will provide extraordinary travel experiences and disseminate geographic knowledge around the globe.



▶ PLEASE FIND OUR ITINERARIES ON PAGES 30-31 & 38-41.

DEAR TRAVELER,

If you've never been to Antarctica, nothing in your experience can prepare you. It is completely without precedent, and utterly exhilarating. Everything about each day's adventures and discoveries—the penguins, the astonishing ice—is thrilling, including the self-discovery that is the most surprising, seldom-anticipated benefit of going to Antarctica.

It's the kind of place, and the kind of experience, that reminds you that the truly worthwhile things in life are, in fact, experiences. And the most valuable things we own—our memories of incredible experiences—are not material at all.

And our expedition teams, captains and officers are dedicated to ensuring that you will have the incredible experiences that make for indelible memories. Thanks to their skill and the good judgment that comes from decades of experience, the adventurous guests on our January 15th voyage got their most fervent wish and more. *National Geographic Explorer* made it to Marguerite Bay, our first time there since 2010, and then headed into the record books—being the first non-icebreaker to achieve a furthest south of 68° 41.4'S 067°56.1'W.

And, according to our team, nearly a third of the onboard contingent opted to take a polar plunge in frigid Marguerite Bay. That's memorable! And on another, earlier departure, guests and the expedition team spent two enthralled hours on *Explorer's* deck watching the gripping drama you'll learn about on page 9 unfold. And that's only two examples of how our experience can create thrilling opportunities for you.

In addition to all you'll see, feel and do in this awesome place, what you'll learn is equally impressive. Antarctica is an international continent dedicated to 'peace and science,' a continent that does not recognize any sovereign nation's claim. How refreshing an idea to spend time in such a place. And what a tonic for your spirit and your memory bank.

Seven years after the Antarctic Treaty was signed in 1959, my father, Lars-Eric Lindblad, pioneered the first layman expedition to Antarctica. And, he opened the Falkland Islands to eco-tourism, as well. The experience we bring to exploring this part of the world matters a great deal, in that you will benefit from it in many ways. I say this in the hopes that, if you choose to explore the magnificent South, you'll choose to do it with us.

On behalf of our expedition teams, I look forward to welcoming you aboard.

All the best,



Sven-Olof Lindblad



# DISCOVER THE T

Antarctica, a place of extraordinary natural beauty, is arguably one of the world's last great wild places, providing travelers with a unique opportunity to experience genuine pristine wilderness. We've been leading expeditions here since 1966, when Lars-Eric Lindblad, father of our CEO Sven Lindblad, led the first ever non-scientific expedition. And what we've learned in 50+ years is how to get out of the way: to enable each individual aboard to discover their own Antarctica—up-close and personally.

National Geographic Orion *framed by the massive ice of Antarctica.*



# THRILL OF THE ICE

Our captains and expedition teams have the kind of experience only 50+ years in the ice grants, and the kind of enthusiasm you usually only see in first-timers. Whether it's refusing to take no for an answer when ice blocks a channel, and finding another route so you can set foot on the seventh continent; or fulfilling a birder's dream of finding a rumored emperor penguin on the coast, they do whatever it takes to provide you with the experience of a lifetime. If you want active discovery and engagement with the ice, penguins and other wildlife, rely on our authentic expedition style to deliver it.

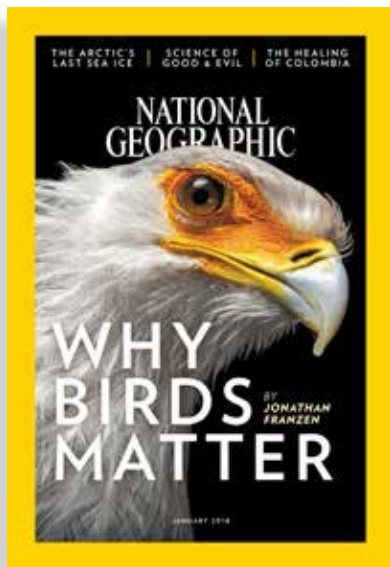
*"This form of travel isn't for spectators, it's for all of those who want to 'get in the arena'—those who are explorers in our modern world in their own right—seeking knowledge, seeking adventure. A rugged climb up an icy, snow-covered mountain, a thrilling walk across a vast trek of sea ice, and yes, a polar plunge. These are the deep and rich experiences that Lindblad Expeditions, together with National Geographic, offer."*

—JEAN CASE, CHAIRMAN OF THE BOARD OF TRUSTEES  
OF THE NATIONAL GEOGRAPHIC SOCIETY

# A VERY SPECIAL YEAR TO EXPL



## YEAR OF THE BIRD 2018



From the beginning of time, birds have captured the human imagination with their elegant beauty, the music of their songs, and their power to soar into the heavens while we watch longingly from below. Now, we pay special tribute to the birds with which we share the planet.

The year 2018 has been designated the **Year of the Bird** by National Geographic, in partnership with a broad range of conservation organizations, in celebration of the 100-year anniversary of the passage of the Migratory Bird Treaty Act in 1918. Learn more at [expeditions.com/yearofthebird](http://expeditions.com/yearofthebird).

That makes 2018 a very special year to explore Antarctica. And we invite you to celebrate the Year of the Bird with us by taking advantage of these exclusive opportunities.



## EXCLUSIVE YEAR OF THE BIRD OPPORTUNITY



Choose the October 22, 2018 **South Georgia & the Falklands** expedition, and you will enjoy the birding experience of a lifetime—to share the adventure with renowned international bird expert, David Allen Sibley. The author and illustrator of one of the world's most popular series nature guides, including the definitive *The Sibley Guide to Birds*, David has appreciated the species of these Southern Ocean islands, but has not yet encountered them in person. He will share his excitement at the prospect of exploring the spectacular bird colonies with you.

*To learn more about David Sibley and other Global Perspective Guest Speakers, see pages 18-19.*

# EXPLORE THE ANTARCTIC

## Year of the Bird Ambassadors

In 2018, select Antarctic departures will be enriched by the presence of Year of the Bird Ambassadors, veteran naturalists from the Lindblad staff who can answer questions, provide guidance, and illuminate your experiences with insight gained from their scientific training and years of experience encountering Antarctic species.

## An Antarctic Bird Species Checklist

When you see the checklist of bird species that we provide, you may be surprised at the great variety of species that you can observe in Antarctica. Most people think only of penguins when they think of Antarctica, but when you include South Georgia and the Falklands, there are over 75 bird species that live in the Southern Ocean.



[EXPEDITIONS.COM/PIPITLOVE](https://www.expeditions.com/pipitlove)



[EXPEDITIONS.COM/PENGUINTHIEF](https://www.expeditions.com/penguinthief)



*King penguins, South Georgia.*

## The Opportunity to Participate in Citizen Science

Since you will be one of the few people in the world who will be able to observe the birds of the Antarctic up-close, you'll have the option to participate in citizen science. In future, researchers might use citizen science observations to study migratory patterns of birds or how populations respond to climate change.

And it couldn't be easier. Simply spot birds, and take photos or keep track on a list. Then, upload to [iNaturalist.org](https://www.inaturalist.org) or [eBird.org](https://www.ebird.org) (you may want to download the apps before leaving home.) And you can rely on your onboard certified photo instructor for help in taking the best photos possible, and on your Year of the Bird Ambassador for instruction on using [iNaturalist](https://www.inaturalist.org) and [eBird](https://www.ebird.org), too.

*iNaturalist will bring you closer to nature and many fellow naturalists. Both a citizen science project and an online social network of naturalists, citizen scientists, and biologists, iNaturalist is built on the concept of mapping and sharing observations of biodiversity across the globe.*





# PENGUINS: ICONIC, REMARKABLE & DOWNRIGHT FUN

Seeing the penguins of Antarctica and observing their antics—their squabbles; their young; their combination of ungainliness and grace; and the surprising evidence of individuality within a sea of sameness—will inevitably delight and entertain you. And spending time with your naturalists, learning about them and their unique adaptation to their hostile environment, will likely inspire in you a respect for these remarkable birds.



*Penguins' unique coloring is called countershading. To predators looking down from above, the penguins' black backs help them blend into the dark ocean. To predators looking up from underwater, the penguin's white belly blends in against the light sky and snow.*

▶ SEE THE HUMOROUS HABITS OF PENGUINS AT [EXPEDITIONS.COM/PENGUINHABITS](https://www.expeditions.com/penguinhabits)



*Clockwise from far left: Chinstrap penguins are one of the most easily identifiable of all of the penguin species, mainly due to the marking on their chins. Female chinstraps will lay two eggs in a nest made out of stones, and both the male chinstrap penguin and the female take turns keeping the eggs warm, with the eggs hatching after about a month.*

*Penguins swim so fast that they can propel themselves over seven feet above water. The technique they use to cut through waves like dolphins or porpoises is called "porpoising."*

*Penguins often slide on their tummies over ice and snow. Researchers believe they do this for fun and as an efficient way to travel. The technique is called "tobogganing."*



*In 2012, scientists discovered that a primary reason penguins can swim so fast is that they have a special "bubble boost." When penguins fluff their feathers, they release bubbles that reduce the density of the water around them. The bubbles act as lubrication that decreases water viscosity, similar to competitive swimsuits.*

# PERFECT PLATFORMS FOR EXPLORATION

*National Geographic Explorer* and *National Geographic Orion* are genuine expedition ships, not cruise ships masquerading as one. Therefore, they are uniquely equipped to facilitate our brand of keen seeing and experiencing—with state-of-the-art tools for exploration. Unparalleled bases for discovery, they each enable the fullest expression of our expedition style: an intimate, authentic, learning-oriented environment. Both ships have virtually identical features and abilities, and provide equal safety features and an equally excellent Antarctic experience. Which ship to choose depends on the polar itinerary and departure you favor—find our three itineraries on pages 30-31 and 38-41.



*Only the early season enables this unique thrill! During November-early December, conditions permitting, our ice masters may “park” our ships in the ice. Guests can then disembark onto a frozen sea—to hike, cross-country ski, or snowshoe.*







*Our expedition team is in unanimous accord: this was one of the most incredible phenomenon ever observed on our Antarctic expeditions. You have to watch this video! See what guests aboard National Geographic Explorer witnessed on January 3, 2018 as a pack of killer whales stalked a lone crab-eater seal on an ice floe. And we promise: no “nature red in tooth and claw” ending—this “film” rivals Rocky for fist-pumping spirit!*

 [VIEW THE VIDEO AT EXPEDITIONS.COM/WHALE\\_HUNT](https://www.expeditions.com/whale_hunt)

# WELCOME TO THE BRIDGE



*Our captains are also vital, engaged members of the expedition community. Here Captain Oliver Kreuss welcomes guests onto the Bridge to watch the officers navigate.*



*Our captains' spotting skills rival our top naturalists. Often, they are the first to see, and are as excited as any guest about, a spectacular whale encounter, penguins on a bobbing berg, or a gorgeous golden hour photo op.*

Captains who have attained the necessary experience navigating polar waters are called ice masters. An ice master is familiar with the unique wind, weather, and current dynamics in polar waters. He or she is also intimately familiar with all the forms of ice and the unique challenges each form presents.

Leif Skog, Lindblad VP of Marine Operations and Master of the *National Geographic Explorer*, is a perfect example of the caliber of our captains. He began his career working for polar expedition ships in the late 70s. On one of his earliest Antarctic assignments, he was appointed Ice Master and Project Leader for the shipping and landing of all the heavy equipment to build the largest airstrip in Antarctica at the Rothera Base for the British Antarctic Survey. He has navigated 150 expeditions to the Antarctic and 50 to the Arctic, with nearly 450 expeditions worldwide.

Lindblad Expeditions is a member of International Association of Antarctic Tour Operators (IAATO), and Captain Skog served as chairman of the Marine Committee, and was the architect for the IAATO-wide Emergency Contingency Plan for all passenger ships cruising in Antarctica. The plan focused on how ships in the vicinity of the peninsula would communicate, coordinate, and respond in the unlikely event of an emergency.

Another important distinction of our expeditions is this: on a cruise, the captain and the cruise director operate independent of each other and follow the same routine each week. However, our captains and expedition leaders collaborate, working together around weather, ice conditions, or other challenges to get you out on exploring adventures. They make the unique, up-close Antarctica experience we provide possible.

[▶ FIND DETAILS ON OUR IMPRESSIVE POLAR CAPTAINS AT  
EXPEDITIONS.COM/CAPTAINS](https://www.lindblad.com/expeditions.com/captains)





*Not something you see every day: Lindblad Vice President of Marine Operations, Captain Leif Skog (a legend in the expedition industry—for his vast experience; his ice mastery; his status as a founding member of IAATO and primary architect of the IAATO Emergency Contingency Plan for all vessels operating in Antarctica) uses a sextant on the bridge of the National Geographic Explorer. He was measuring the height of an iceberg, one of the few navigation tasks not digitized and computerized on the bridge.*



# ACTIVELY EXPLORE EVERY DAY, IN MANY WAYS



*National Geographic Explorer* and *National Geographic Orion* Antarctic itineraries are crafted by explorers, and every itinerary point features opportunities to head out and discover, in one dynamic way or another. You can begin each day with a morning stretch class, or a pre-breakfast coffee at the 24/7 coffee/tea stations on each ship. And you can look forward to going ashore to explore a penguin colony, Zodiac tours

in icy fjords, and opportunities to kayak, cross-country ski or snowshoe depending on the season, location and conditions. Our fleet of Zodiacs and kayaks, plus our teams' swiftness in deploying, ensures that you will spend no time wistfully awaiting a turn. For those whose fitness requirements demand it—the Fitness Centers are open at any time of day or night, particularly useful in Antarctica, where the midnight sun blurs distinction!

## CROSS-COUNTRY SKI & SNOWSHOE THE SEVENTH CONTINENT IN NOVEMBER

Join your ski guide on a snowshoe hike or cross-country ski outing across the frozen sea ice—or use them to blaze your own trail. Weather permitting, available only on November voyages. It's a thrilling way to experience this vast landscape.





*Clockwise from top: Exploring amid the bergs via Zodiac with narration by a naturalist; hikers head up for spectacular views of the polar wilderness; a fleet of stable kayaks allow for personal exploration; explorers cross-country ski out on the frozen sea in November. Inset: an exuberant guest takes the polar plunge challenge.*







# EXPLORE THE ANTARCTIC UNDERSEA

Inspired by Jacques Cousteau, Sylvia Earle, Enric Sala and other National Geographic explorers, *National Geographic Explorer* and *National Geographic Orion* are the only expedition ships that travel with a dedicated undersea program and full-time undersea specialists who dive with a video camera and bring back footage for all to watch in vivid HD, in the dry warmth and comfort of the ships' Lounges—perhaps with a cocktail in hand and hors d'oeuvres at the ready. Always interesting, it can also be pioneering. In Antarctica, the footage you see may be of marine life few scientists, or human eyes for that matter, have ever seen.

▶ SEE AN AMAZING UP-CLOSE UNDERSEA ENCOUNTER AT [EXPEDITIONS.COM/SEAL](https://www.nationalgeographic.com/expeditions/seal)

*A crabeater seal peeks from beneath the ice.*





*The Antarctic undersea is surprisingly colorful, shown here a group of sea stars feeding together. Our undersea specialists will reveal the marine world to you aboard National Geographic Explorer and National Geographic Orion. Both are equipped with an ROV (Remotely Operated Vehicle) capable of exploring depths up to 1,000 feet, well beyond the limits of our human divers. Naturalist/Expedition Diver Robert Alexander surrounded by brash ice after a dive in Port Lockroy, Antarctica.*

# A+ EXPEDITION TEAMS

Our Expedition Leaders, known as ELs to staff and guests alike, are outstanding leaders who attract and inspire the naturalists, biologists, marine biologists, zoologists, and undersea specialists who return each year, like migratory creatures, to the Southern Ocean aboard *National Geographic Explorer* and *National Geographic Orion*—to share the Antarctic ice with you and your fellow guests. Collectively, these specialists have hundreds of years of experience guiding travelers to the most interesting places in the world.

Passionate about the geographies they explore, our naturalists illuminate each facet of the Antarctic through their enthusiasm and knowledge. Our guests consistently cite the expertise and engaging company of our staff as key reasons to repeatedly travel with us. More than guides, they are engaging companions, joining you at meals as well as on walks, Zodiac, and kayak forays. Our industry-leading ratio of 1 expedition staff to 10 guests on *Explorer* and *Orion* ensures that you'll have a variety of interests and personalities to choose from on daily activities. You are never herded into large groups, you can gravitate naturally to the staff member you're most interested in.

▶ PLEASE VISIT [EXPEDITIONS.COM/EXPERTBIOS](https://www.nationalgeographic.com/expeditions/expertbios) AND SELECT YOUR ITINERARY TO LEARN WHICH STAFF IS TRAVELING ON YOUR DEPARTURE



*Here is a partial list of staff during our Antarctic season: clockwise from left: Expedition leader Russell Evans, Lindblad-National Geographic certified photo instructor Michael S. Nolan, naturalist and birder Brent Stephenson, naturalist Elise Lockton, undersea specialist Paul North, veteran polar naturalist Tom Ritchie.*





# BENEFIT FROM NATIONAL GEOGRAPHIC ABOARD



*National Geographic Explorer* and *National Geographic Orion* are the only expedition ships exploring the Antarctic with a National Geographic Photographer aboard every departure. These photographers have inspired countless professional and amateur photographers, and accompany our ships to inspire and assist you.

And, they are flanked by Lindblad-National Geographic certified photo instructors, all talented naturalists, trained to assist you with your camera settings, the basics of composition, observation, and more to equip you with skills. Now, every guest—from iPhone camera users to semi-pro shooters—can stand side-by-side with top photographers, pick up tips in the field, and take great photos. And you'll want to—Antarctica provides a photo op a minute and a once-in-a-lifetime experience to capture. And you don't have to consider yourself a photographer to participate in the fun and rewards of "aim & create." You'll return home with your best photos ever, and a lifelong skill.



*Here is a partial list of National Geographic photographers traveling with us. Clockwise: Tim Laman, Maria Stenzel, Phil Schermeister, Ken Garrett, Jonathan Irish, Ralph Lee Hopkins, Annie Griffiths.*

▶ LEARN MORE AT [WWW.EXPEDITIONS.COM/PHOTO](http://WWW.EXPEDITIONS.COM/PHOTO) AND FIND INTERESTING BIOS FOR ALL PHOTOGRAPHERS AT [WWW.EXPEDITIONS.COM/NGPS](http://WWW.EXPEDITIONS.COM/NGPS)



# SHARE THE ADVENTURE WITH ENGAGING GLOBAL PERSPECTIVES

Our Global Perspectives guest speaker program aboard *National Geographic Explorer* pairs engaging and knowledgeable experts with our expedition team's expertise to enrich your experience, and add extra levels of relevant insight. Join us aboard *National Geographic Explorer*, and you'll share adventures, drinks, dinner, and deck time with these intriguing individuals.



## DAVID ALLEN SIBLEY

David is the author and illustrator of the series of successful guides to nature that bear his name, including *The New York Times* best seller *The Sibley Guide to Birds*. He has contributed art and articles to *Smithsonian*, *Science*, *The Wilson Journal of Ornithology*, *Birding*, *BirdWatching*, and *North American Birds*, and wrote and illustrated a syndicated column for *The New York Times*. He is the recipient of the Roger Tory Peterson Award for Lifetime Achievement from the American Birding Association and the



Linnaean Society of New York's Eisenmann Medal.

**South Georgia & the Falklands, Oct. 22, 2018**

## ROBERT LEE HOTZ

The science columnist for *The Wall Street Journal*, Robert writes about cutting-edge research on climate change, cosmology, molecular medicine, the human brain and much more. He has traveled three times to the South Pole, and twice to the Greenland ice cap under the auspices of the National Science Foundation. A Pulitzer Prize finalist, he is among America's most respected science journalists. **Antarctica, Jan. 5, 2019**



## WILL STEGER

The fourth person ever to reach both Poles, Will is known by many titles—educator, activist, photographer, and explorer. This former Explorer-In-Residence for National Geographic is a pioneer in his field, with a series of firsts in polar exploration to his credit.

**Antarctica, Dec. 16, 2018**



## ZARIA FORMAN

Zaria is an artist who draws inspiration from the natural world, especially icebergs, and depicts them in pristine and meticulously detailed, large-scale drawings. Traveling to far-flung corners of the globe, Zaria creates drawings conveying the urgency of climate change by connecting people to the beauty of remote landscapes.

**Antarctica, S. Georgia & the Falklands, Nov. 6, 2018**



## CAROL DEVINE

Carol is a humanitarian, social scientist, and a member of the Society of Women Geographers. She led the first civilian clean-up expedition to the Antarctic in collaboration with the Russian Antarctic Expedition, and co-wrote *The Antarctic Book of Cooking and Cleaning*.

**Antarctica, Dec. 6, 2018**



# TIVES GUEST SPEAKERS

## ROBERT BINDSCHADLER

After a 30-year career at NASA, Dr. Bindschadler retired in 2010 as the Chief Scientist of NASA's Hydrospheric and Biospheric Sciences Laboratory and a Senior Fellow of the Goddard Space Flight Center. He is a Fellow of the American Geophysical Union, a past President of the International Glaciological Society and is currently both a NASA Emeritus Scientist and a Senior Research Scientist at Morgan State University. He maintains an active interest in glaciers and ice sheets, and has led 16 Antarctic field expeditions to study the dynamics of the West Antarctic ice sheet. He has testified before Congress, briefed the U.S. Vice President and published over 140 scientific papers.



**Antarctica, Nov. 26, 2018**

## JON BOWERMASTER

A noted oceans expert, award-winning journalist, author, filmmaker and adventurer, Jon is a six-time grantee of the National Geographic Expeditions Council. One of the Society's 'Ocean Heroes,' his first assignment for *National Geographic* magazine in 1989 was to document a dog-sled expedition that crossed Antarctica taking 221 days. He is the founder of Oceans 8 Films and One Ocean Media Foundation.



**Antarctica, Feb. 4, 2019**

## PETER HILLARY & JAMLING TENZING NORGAY



Peter Hillary (below) and Jamling Tenzing Norgay (left) joined us in 2016 in South Georgia to celebrate our 50th Anniversary and the finale of the Shackleton

Centennial by recreating Shackleton's legendary traverse from Fortuna Bay to the Stromness whaling station to find rescue for his stranded men. Born into mountaineering royalty, Peter is the son of Sir Edmund Hillary, and Jamling is the son of Hillary's Everest partner, Tenzing Norgay.

**Journey to Antarctica, Jan. 15 & 25, 2019** (Jamling will join)  
**Antarctica, S. Georgia, Falklands, Nov. 6, 2018** (Peter will join)



## SUSAN GOLDBERG

Susan is Editorial Director of National Geographic Partners and Editor In Chief of *National Geographic* magazine. As Editorial Director, she is in charge of all publishing ventures, including digital journalism, magazines, books, maps, children and family, and travel and adventure. She is the 10th editor of the magazine since it was first published in October 1888. Most recently, she has been named one of Washington's most powerful women in the October 2017 issue of *Washingtonian*.



**Antarctica, Dec. 26, 2018**

▶ LEARN MORE ABOUT OUR GUEST SPEAKERS AT [EXPEDITIONS.COM/POLAR\\_SPEAKERS](https://www.expeditions.com/polar_speakers)



*Hotel Manager Patrik Svärdmyr welcomes you aboard National Geographic Explorer.*

## EXCEPTIONAL HOTEL STAFF



*Stocking for our Antarctic voyages is a joy for our wine steward, since we provision the ships in Argentina and Chile, producers of world-class wines. Prepare to taste the best of the Southern Hemisphere.*

*National Geographic Explorer and National Geographic Orion share matching appetites for adventure and dining excellence. Serge Dansereau, the head chef and owner of the iconic Bathers' Pavilion Café in Sydney, Australia, is a*



*multi-award winning chef, renowned internationally, and considered 'the father of the fresh food movement.' He designs the menus and trains the staff aboard both ships. His menu concepts are brought to life daily by each ship's Executive Chef. Count on them to keep your expeditionary spirit fed, so to speak, and for daily diversity and regional flavors.*





*Dining rooms on both ships, like Orion's shown here, are inviting and informal. No assigned seating makes for easy mingling with congenial fellow guests, expedition staffers, and special guests. Breakfast and lunches are often buffet-style; dinners are artfully plated and served. Save room for dessert—extraordinary daily!*

*“Discovering sustainable local growers and fisheries on our itineraries to ensure that our guests ‘taste’ the regions they’re exploring is rewarding work. We provision for Antarctica in Argentina with fresh produce and sustainably produced meat and poultry. Unlike cruise companies which mandate a food program across the fleet, our chefs have the freedom to execute Serge’s smartly conceived dishes while taking advantage of what’s at hand. When a local fishing boat hails our ship with line-caught fish, for example, the chef can say yes! And when our ship is in the Falklands, we can obtain fresh vegetables from a hydroponic grower we know, and fresh lamb from an island rancher we’ve known for years. Our goal is for our guests to experience the geography through the food served aboard wherever possible. And to always dine extraordinarily well.”*

—Ana Esteves, Manager Hotel Operations, Lindblad Expeditions



# AN AUTHENTIC EXPEDITION EXPERIENCE STARTS HERE



Every individual who joins our expeditions is there for his or her own reasons: to learn about the region, to see how others live, to have personal encounters and experiences, and to see and observe wildlife. But what proves most satisfying ultimately is the *esprit du corps* of our expedition community. It's a deeply rewarding phenomenon. And *National Geographic Explorer* and *National Geographic Orion* enhance this experience-sharing. Our ships' lounges feature 'the circle of truth,' where talks, presentations, and the daily ritual of cocktail hour "Recap," a hallmark of our expeditions, take place.

In addition, both ships offer fully-stocked libraries, genial spaces where guests can look up any topic or creature that interests them, or just hole up with a good book. Observation lounges on both ships are lavishly windowed, for a constant connection to the world outside. And on both ships, guests have an open invitation to visit the bridge—to watch the captain and his officers navigate, and to spend time with the naturalists, endlessly on alert for marine animal and bird sightings while we're underway. Every inch of each ship presents a fresh vantage point for observation, for capturing an image, or for a quiet talk with a new-found friend. You will remember the satisfactions of life aboard long after you leave.



Far left: Explorer's Observation Lounge is flooded with light and non-stop views; the Library (left) is stocked with all manner of reference, geography-relevant and other books, plus cards, games, and an ever-ready stock of binoculars.





*Clockwise from top: Expedition leader Russell Evans conducts a presentation from the 'circle of truth,' a hallmark of our expeditions and the design of our ships' lounges; expansive decks invite you outdoors to relax, read and observe the vistas; guests are drawn to the Bridge to watch the calm, quiet work of navigation unfold, open to all during the voyage; Explorer's Bistro Bar is a lively alternative to the main dining room for meals and socializing.*







*Orion's observation lounge and library provide a welcome to readers, card players, and sailors who love to review the nautical charts on display. At right, Orion's main lounge is the center of shared life aboard; expansive windows invite in scenic views, and the reflective ceiling mirrors the ocean in a sublimely relaxing way.*







*From left: Explorer's fitness center offers a panoramic view instead of the usual gym TV screens. A classic Swedish sauna makes the Wellness Spa at the top of the ship a perfect place to end an active day. Massages and body treatments are the ideal counterpoint to walking, hiking, kayaking or a good workout—and a perfect way to take advantage of transit time at sea.*







# PERFECT ENDING TO ACTIVE DAYS

*National Geographic Explorer* and *National Geographic Orion* offer private spaces as inviting as their public ones. *Explorer's* 81 outside cabins, including 4 suites with balconies, 9 cabins with balconies, and 14 solo cabins, are decorated in a contemporary palette of relaxing earth tones. *Orion's* 53 outside cabins, including 9 suites with balconies, and 4 solo cabins, are traditional in style with rich jewel-toned fabrics and furniture. Both ships provide deluxe bedding—our signature feather duvet—and thick terry robes. All cabins feature flat screen TVs with news and movie programming, as well as channels broadcasting the live feed from our remote-controlled crow's nest camera, and our electronic chart system. And all cabins are equipped with ethernet and wifi connections, and USB ports for mobile devices.



▶ LEARN MORE ABOUT OUR SHIPS AT: [EXPEDITIONS.COM/NGEXPLORER](https://www.expeditions.com/ngexplorer),  
or [EXPEDITIONS.COM/NGORION](https://www.expeditions.com/ngorion)



*Clockwise from top left: Explorer Category 7 upper deck suite with balcony; every cabin has a National Geographic atlas; Category 2 cabin aboard Orion; Explorer suite bathroom; a Category 6 balcony suite aboard Orion.*



# INCLUSIVE PRICING MEANS



Travel to the Antarctic region is a major decision and, rightfully, the focus of all your thoughts and planning until the moment you embark ship. However, our expeditions offer the travel equivalent of an *amuse bouche* to anticipate and savor. If you're aboard *National Geographic Explorer*, you'll spend time before embarkation in Buenos Aires, a warm, cosmopolitan counterbalance to the icy beauty of Antarctica. From the elegant interior of your hotel, the Alvear Art Hotel, and its strollable environs, to the tawdry glamour of tango in La Boca, and the fascinating Recoleta necropolis, the time you spend here will be highly gratifying, filled with discoveries.

And if aboard *National Geographic Orion*, Santiago will welcome you to the south with sun-splashed ochre walls, waving palms

and breathtaking mountains ringing the city. Enjoy the highly walkable city, on your own or on the informative tour we provide, head out into the surrounding countryside, or opt to savor the warmth poolside in the elegant garden of your graciously appointed hotel, the Mandarin Oriental.

*King penguins, South Georgia.*



# VALUE PLUS EXPERIENCES

## FREE ROUND-TRIP AIRFARE ON SELECT DEPARTURES

See page 48 or call for details.

## FREE BAR TAB AND CREW GRATUITIES

Your bar tab and gratuities for the crew are complimentary on all departures of *National Geographic Explorer* and *National Geographic Orion*.

## COMPLIMENTARY LIMITED EDITION 50TH ANNIVERSARY ANTARCTICA PARKA

## NO EXTRA CHARGES FOR ACTIVITIES—EVER

All the daily activities—from city explorations at the beginning and end of the expedition, to Zodiac, kayaking, or hiking explorations—are included in the price.

## INCLUDED ON ALL OFFSHORE EXCURSIONS:

- ✓ Meals on land, as indicated in itinerary
- ✓ Special access permits, park fees, port taxes
- ✓ Transfers to and from group flights
- ✓ One night hotel accommodation at the Alvear Art Hotel Buenos Aires (or similar) or Hotel Santiago by Mandarin (or similar) & city overview
- ✓ Guided overview in Ushuaia and hotel VIP lounge pre-airport with refreshments

## NO CHARGE FOR EXPERTISE

The knowledgeable guidance and company of our expedition staff, plus all lectures and presentations, and our fully stocked onboard library, are open to all and included in the price.

## AND FREELY ENJOY THE FOLLOWING ONBOARD:

- ✓ All meals—from breakfast, lunch & dinner in the dining room
- ✓ All non-alcoholic beverages including unlimited cappuccinos, latte, coffee, tea & soda
- ✓ Alcoholic beverages, excepting certain super-premium brands of alcohol
- ✓ Complimentary refillable water bottle
- ✓ Hors d'oeuvres & snacks during lounge recap
- ✓ Tea time with pastries; all-day fruit, cookies
- ✓ Fitness Center with elliptical, treadmill, stationary bicycle, free weights, bands & more
- ✓ Traditional Swedish Sauna
- ✓ Daily stretching class with wellness specialist
- ✓ Mac computers for downloading your camera's memory card & Internet access
- ✓ Access to the B+H Photo locker with the latest gear to try out on loan
- ✓ Access to the ship's Bridge for optimal observation and to watch navigation
- ✓ Crew gratuities



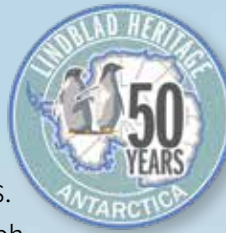


# JOURNEY TO ANTARCTICA: THE WHITE CONTINENT

## 14 DAYS/11 NIGHTS—ABOARD NATIONAL GEOGRAPHIC EXPLORER AND NATIONAL GEOGRAPHIC ORION

PRICES FROM: \$13,890 to \$30,960 (See pages 44-45 for complete *National Geographic Explorer* prices; see pages 46-47 for *National Geographic Orion* prices.)

Traveling aboard the state-of-the-art *National Geographic Explorer* or *National Geographic Orion*, encounter the spectacular Antarctic Peninsula and the surrounding islands and waterways. Glide around enormous icebergs by Zodiac, photograph the penguin colonies, and kayak in complete tranquility.



### EXPEDITION HIGHLIGHTS

- ▶ Explore the world's last great wilderness in the company of a team of top naturalists celebrating Lindblad's 50-year heritage in Antarctica.
- ▶ View magnificent mountains, and huge glaciers. On shore, observe thousands of penguins: gentoo, Adélie, and chinstrap.
- ▶ Cruise aboard sturdy Zodiac landing craft in search of wildlife.
- ▶ Kayak in protected waters, paddling as penguins swim nearby.
- ▶ November departures on both ships offer the possibility to cross-country ski and snowshoe—on the frozen sea ice.
- ▶ Two days prior in warm Buenos Aires or Santiago? Or time post-voyage at Easter Island or Iguazú Falls? Call to discuss options or visit [expeditions.com/antarcticaext](http://expeditions.com/antarcticaext)

### EXPERIENCE & EXPERTISE

**50**  
YEARS  
EXPERIENCE

Our dedicated staff is key to your experience. Representing diverse expertise, our knowledgeable expedition team allows for more activities

and interests to which you can gravitate. An expedition leader, a team of naturalists/historians, a National Geographic photographer, a Lindblad-National Geographic certified photo instructor, undersea specialist, video chronicler, and a wellness specialist all contribute to your experience of the wonders. And a Global Perspectives guest speaker adds relevant insight (*Explorer* only).

*Visit our website to read staff and guest speaker bios for this expedition.*

*A pair of gentoo penguins welcomes guests.*



**DAYS 1 AND 2: U.S./BUENOS AIRES, ARGENTINA (EXPLORER) OR SANTIAGO, CHILE (ORION)**

Depart on an overnight flight to Buenos Aires (*Explorer*) or Santiago (*Orion*). Settle into the Alvear Art Hotel (or similar) before seeing the city's Beaux-Arts palaces and the famous balcony associated with Eva Perón. Or check into the Mandarin Oriental Santiago (or similar) before our guided overview of this vibrant city backed by the inspiring Andes. (Day 2: L)

**DAY 3: FLY TO USHUAIA/EMBARK**

Fly by private charter to Ushuaia, the southernmost city in the world. Enjoy lunch on a catamaran cruise of the Beagle Channel. Embark *National Geographic Explorer* or *National Geographic Orion*. (B,L,D)

**DAY 4: AT SEA/DRAKE PASSAGE**

While crossing the legendary Drake Passage, spot albatross and other seabirds that glide alongside the ship. (B,L,D)

**DAYS 5–10: EXPLORING ANTARCTICA**

With long hours of daylight at this time of year, we have ample opportunity to explore the Antarctic Peninsula and the surrounding islands. In keeping with the nature of an expedition, the schedule is flexible so that we can take advantage of the unexpected—watching whales at play off the bow, taking an after-dinner

Zodiac cruise, or heading out on an unplanned excursion. We anticipate offering opportunities each day to hike, kayak among the ice floes, and experience close encounters with wildlife. You may have the thrill of watching our powerful ship crunch through the pack ice, or step ashore to thousands of Adélie and gentoo penguins. You'll learn how climate change affects the penguin populations, and how best to capture images of penguins from a National Geographic photographer. Back aboard, our undersea specialist may present video from that day's dive or show rare images taken up to 1,000 feet below the surface using our ROV. Our expert staff will craft an expedition where you will learn, see, and experience more. (B,L,D)

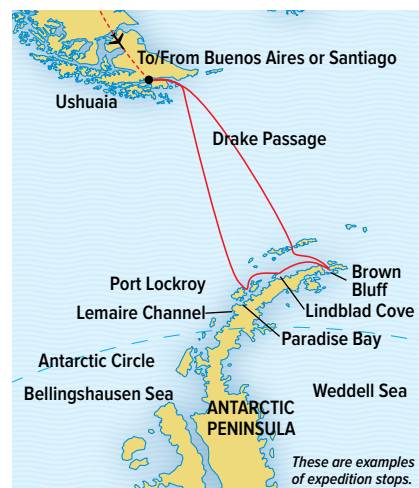
**DAYS 11 AND 12: AT SEA**

Enjoy the ship's amenities as the coast of Antarctica disappears from view. Round the southernmost tip of South America, and see the meeting of the Atlantic and Pacific Oceans. Celebrate your voyage at a farewell dinner on board. (B,L,D)

**DAYS 13 AND 14: DISEMBARK**

USHUAIA, ARGENTINA/BUENOS AIRES (*EXPLORER*) OR SANTIAGO, CHILE (*ORION*)/U.S.

Disembark in Ushuaia. Fly by charter to Buenos Aires or Santiago and connect with your overnight flight home. (Day 13: B,L)



**EXPEDITION DETAILS**

**DATES (*Explorer*):** 2018 Dec. 6, 16<sup>†</sup>, 26<sup>†</sup>; 2019 Jan. 5, 15, 25; Feb. 4; Nov. 27; Dec. 7, 17<sup>†</sup>, 27<sup>†</sup>; 2020 Jan. 6, 16, 26; Feb. 5

**DATES (*Orion*):** 2018 Nov. 25; Dec. 5, 15<sup>†</sup>; 2019 Jan. 4, 14, 24; Feb. 3; Dec. 9, 19<sup>†</sup>, 29<sup>†</sup>; 2020 Jan. 8, 28; Feb. 7

*Orion* departures route via Santiago instead of Buenos Aires. Visit our website.

<sup>†</sup>For holiday rates, see pages 44-45 and 46-47.

**SPECIAL OFFERS:**

Book by **Jul. 31, 2018** on select dates for **FREE ROUND-TRIP** economy group airfare Miami/Buenos Aires or Santiago; ask about other U.S. gateways. Plus, we will cover your bar tab and tips to the crew.

**OPTIONAL EXTENSIONS**

Prior to your voyage, add two days in **Buenos Aires (*Explorer*)** or two days in **Santiago (*Orion*)**. Add a four-day post-voyage extension to **Easter Island** (both ships), or three days post-voyage at **Iguazú Falls (*Explorer* only)**. Call for details, or see pages 42-43.

**GLOBAL PERSPECTIVES GUEST SPEAKERS**

Travel with former NASA Scientist **Robert Bindschadler**, Nov. 26, 2018; social scientist **Carol Devine**, Dec. 6, 2018; **Susan Goldberg**, Editor In Chief of *National Geographic* magazine, Dec. 26, 2018; science writer **Robert Lee Hotz**, Jan. 5, 2019; mountaineer **Jamling Tenzing Norgay**, Jan. 15 & 25, 2019; adventurer **Jon Bowermaster**, Feb. 4, 2019.

**NATIONAL GEOGRAPHIC PHOTOGRAPHERS**

Travel with **Phil Schermeister**, Nov. 26, 2018; **Andy Mann**, Dec. 6, 2018; **Max Lowe**, Dec. 15 & 25, 2018; **Tim Laman**, Dec. 26, 2018; **Jonathan Irish**, Jan. 4 & 14, 2019; **Ken Garrett**, Jan. 5 & 15, 2019.



Sunset, Lemaire Channel.



Massive king penguin colonies, as splendid a sight as this world offers, can be found in a special place: South Georgia. A remote island in the Southern Ocean some 750 nautical miles from Antarctica, South Georgia is the new frontier—where savvy travelers with a passion for wild places can experience the genuine sovereignty and majesty of a last wild kingdom.



*Second in size only to the emperor penguin, these colorful king penguins in South Georgia look so different from their fuzzy brown chicks that they were once thought to be a different species.*



And the Falkland Islands, a geography few of even the most knowledgeable travelers know, rival South Georgia in its gasp-inducing pristine beauty and wildness. While the Falklands boasts a human population (3,000 people in total; 2,500 of whom live in the capital, Stanley) the animals—specifically albatross, rockhopper penguins, fur seals and more—vastly outnumber them and constitute a major draw for wildlife enthusiasts and photographers.







In addition to the colossal king penguin colonies, South Georgia is also home to thriving fur seal populations, elephant seals, gentoo and macaroni penguins, skuas, and the tiny but mighty South Georgia pipit, the only songbird below the polar front. We have the luxury of time here—to fully absorb the wonder of it: an island that grants us a vision of the primeval world in which animals have dominion, and live their lives in full.











*The thrilling sight of tens of thousands of king penguins greeting you on a single beach in South Georgia!*



# SOUTH GEORGIA AND THE FALKLANDS

**19 DAYS/16 NIGHTS—ABOARD NATIONAL GEOGRAPHIC EXPLORER**

PRICES FROM: \$16,990 to \$34,520 (See pages 44-45 for complete *National Geographic Explorer* prices.)

Steeped in Shackleton and whaling lore, covered mostly in glaciers, South Georgia explodes with life: gentoo and king penguins, enormous elephant seals and a thriving fur seal population. Here on South Georgia you can observe one of the world's great wildlife spectacles: literally tens of thousands of stately king penguins on a single beach. The Falkland Islands are equally impressive, with colonies of nesting albatross and rockhopper penguins. This British Territory also adds a human element, with remote settlements and people living off the land.



## GLOBAL PERSPECTIVES GUEST SPEAKER

**David Allen Sibley**

David is the author and illustrator of the successful guides to nature that bear his name, including *The New York Times* best seller *The Sibley Guide to Birds*. In 2018 Lindblad Expeditions and National Geographic will celebrate the Year of the Bird. Learn about the islands' amazing birdlife with David and our naturalists, who will deliver an enhanced birding experience for guests with any level of birding affinity. David will be aboard on **Oct. 22, 2018**.



## EXPEDITION HIGHLIGHTS

- ▶ Weather permitting, hike in the footsteps of Sir Ernest Shackleton's fated Imperial Trans-Antarctica Expedition aboard *Endurance*.
- ▶ See stately king penguins—literally tens of thousands on a single beach in South Georgia.
- ▶ Observe magnificent black-browed albatross in the Falklands, and see Magellanic penguins peeking from their burrows.
- ▶ Paddle a kayak amid curious fur seals, and Zodiac cruise in South Georgia's isolated bays.
- ▶ You'll have the special opportunity to fly by private charter from the Falklands to Santiago, eliminating the sea crossing one-way.
- ▶ Two days prior in warm Buenos Aires? Or time post-voyage at Easter Island?  
Call or visit [expeditions.com/southgeorgiaext](http://expeditions.com/southgeorgiaext)

*A view of Gold Harbour and the Bertrab Glacier, South Georgia.*



## DAYS 1 AND 2: U.S./BUENOS AIRES, ARGENTINA

Depart on an overnight flight to Buenos Aires. Settle into the Alvear Art Hotel (or similar) before seeing the city's Beaux-Arts palaces and the famous balcony associated with Eva Perón. (Day 2: L)

## DAY 3: FLY TO USHUAIA/EMBARK

Fly to Ushuaia, the southernmost city in the world. Enjoy lunch on a catamaran cruise of the Beagle Channel before embarking. (B,L,D)

## DAY 4: AT SEA IN THE SOUTH ATLANTIC

Settle into shipboard life, listening to informal discussions from our naturalist staff to prepare for the wildness in the Falklands. Spend time on deck and on the bridge, scanning for petrels, penguins and albatross. (B,L,D)



*Blue-eyed shags, Falkland Islands.*

## DAYS 5 AND 6: FALKLAND ISLANDS

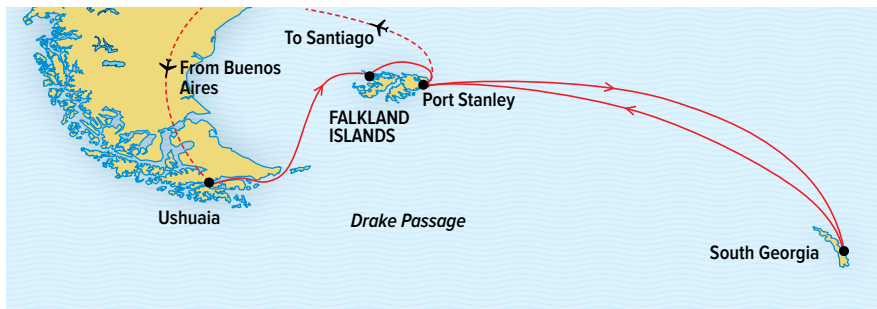
Each Falkland Island is a variation on the theme of topographical beauty with white-sand beaches, vaulting cliffs, windswept moors, and the sunlit yellows and sage greens of waving tussock grass. The Falklands boast thousands of irresistible gentoo, rockhopper and Magellanic penguins, as well as magnificent albatross and fur seals. Walk along beautiful white-sand beaches, meander through tussock grass or sit atop a cliff and ponder the views. (B,L,D)

## DAYS 7 AND 8: AT SEA

During our days at sea, we learn about the fascinating history of Antarctic exploration, as well as the flora, fauna and geology of South Georgia. Our naturalists help identify the seabirds that follow us: wandering albatross, prions and black-browed albatross. (B,L,D)

## DAYS 9–15: SOUTH GEORGIA ISLAND

Explore the spectacular coastline of South



Georgia Island. In keeping with the nature of an expedition, our schedule is flexible with opportunities for walking, hiking, kayaking and Zodiac excursions. Sailing along the coast, we plan to offer activities every day including visits to Grytviken, the final resting place of Shackleton, and Stromness Harbour, where Shackleton, Tom Crean and Frank Worsley finally reached aid at a whaling station. See huge elephant seals, and on a single beach, you will see thousands of king penguins! (B,L,D)

## DAYS 16 AND 17: AT SEA/FALKLANDS

With whales beneath and birds above, head up to the bridge, or spend these days enjoying the ship's spa, fitness center, library, and observation deck. After time at sea, our journey across the South Atlantic Ocean takes us once more to the island archipelago that teems with nature. Our afternoon visit to Port Stanley offers a chance to see the human face of the islands, to meet the hospitable locals, hoist a drink at a local pub, and stroll around this remote colonial town. (B,L,D)

## DAYS 18 AND 19: DISEMBARK

STANLEY, FALKLANDS/FLY TO SANTIAGO, CHILE/U.S.

After breakfast, disembark in the Falklands capital city of Stanley, and transfer to the

airport at Mount Pleasant for our private charter flight to Santiago to connect with your overnight flight home. (Day 18: B,L)

## EXPEDITION DETAILS

**DATES:** 2018 Oct. 22; 2019 Mar. 6; Oct. 23; 2020 Mar. 6

### SPECIAL OFFERS:

Book by **Jul. 31, 2018** to receive **FREE ROUND-TRIP AIRFARE** (Miami/Buenos Aires/Ushuaia and Falklands/Santiago/Miami). Plus, we will cover your bar tab and tips to the crew.

### OPTIONAL EXTENSIONS

Prior to your voyage, add two days in **Buenos Aires**. Add a four-day post-voyage extension to **Easter Island**. Visit our website or see pages 42-43.

### GLOBAL PERSPECTIVES GUEST SPEAKERS

Travel with renowned birder **David Allen Sibley**, Oct. 22, 2018. [Learn more at expeditions.com/experts](http://expeditions.com/experts)

### NATIONAL GEOGRAPHIC PHOTOGRAPHER

Every departure travels with a National Geographic photographer to assist you. To date: **Jasper Doest**, Oct. 22, 2018.



*Male southern elephant seal pups, South Georgia.*

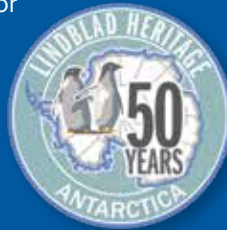


# ANTARCTICA, SOUTH GEORGIA, AND THE FALKLANDS

**24 DAYS/21 NIGHTS—ABOARD NATIONAL GEOGRAPHIC  
EXPLORER AND NATIONAL GEOGRAPHIC ORION**

PRICES FROM: \$23,990 to \$49,990 (See pages 44-45 for complete *National Geographic Explorer* prices; see pages 46-47 for *National Geographic Orion* prices.)

This voyage has it all: the impossible beauty of Antarctic ice, the vast king penguin colonies of South Georgia, and the Falkland's amazing bird colonies. Traveling aboard one of our ice-class expedition ships *National Geographic Explorer* or *National Geographic Orion*, spend five days discovering the Antarctic Peninsula. Stroll through lively crowds of penguins in stunning South Georgia, and hike the shores of the Falkland Islands. Experience boundless wildlife and captivating beauty as you venture into some of the planet's most unspoiled landscapes.



## FLY THE CROSSING!

Take advantage of a special opportunity on the Nov. 6, 2018 or Nov. 7, 2019 voyage. Fly by private charter one-way from Santiago, Chile to the Royal Air Force base in the Falklands, where you will embark *Explorer*—allowing us to convert a day at sea into a day along the Antarctic Peninsula. For itinerary details, go to: [expeditions.com/flythecrossing](http://expeditions.com/flythecrossing)

*Guests exploring Antarctica's  
big ice by Zodiac.*

## EXPEDITION HIGHLIGHTS

- ▶ Trace the story of Sir Ernest Shackleton's fateful journey aboard *Endurance*, and toast at his gravesite in South Georgia.
- ▶ See three distinct regions, and benefit from our 50 years of experience here.
- ▶ November departures on both ships offer the possibility to cross-country ski and snowshoe—on the frozen sea ice.
- ▶ Two days prior in warm Buenos Aires or Santiago? Or time post-voyage at Easter Island or Iguazu Falls? Call to discuss options or visit [expeditions.com/antarcticaext](http://expeditions.com/antarcticaext)



**DAYS 1 AND 2: U.S./BUENOS AIRES, ARGENTINA (EXPLORER) OR SANTIAGO, CHILE (ORION)**

Depart on an overnight flight to Buenos Aires (*Explorer*) or Santiago (*Orion*). Settle into the Alvear Art Hotel (or similar) before seeing the city's Beaux-Arts palaces and the famous balcony associated with Eva Perón. Or check into the Mandarin Oriental Santiago (or similar) before our guided overview of this vibrant city backed by the inspiring Andes. (Day 2: L)

**DAY 3: FLY TO USHUAIA/EMBARK**

Fly to Ushuaia, the southernmost city in the world. Enjoy lunch on a catamaran cruise of the Beagle Channel before embarking. (B,L,D)

**DAY 4: AT SEA**

Settle in to shipboard life as we sail to Antarctica. Keep a lookout for albatross that glide alongside the ship. (B,L,D)



*Cross-country ski on the frozen sea in November (conditions permitting).*

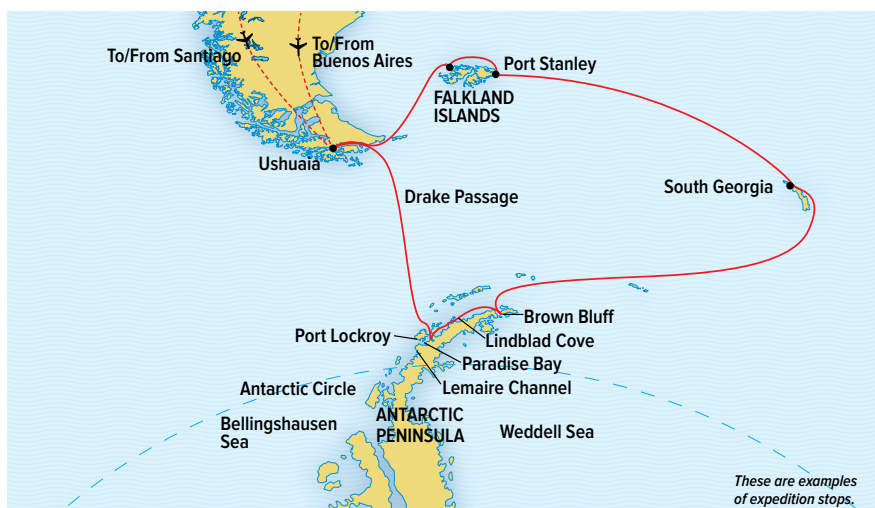
**DAYS 5–10: ANTARCTICA**

With long hours of daylight, we make the most of our days exploring the Antarctic Peninsula and surrounding islands. Our schedule is flexible, allowing us to take advantage of the unexpected. We'll sail through the incomparable Lemaire Channel (conditions permitting) and spend these days on the "White Continent," exploring via Zodiac, kayak and on foot, and using our arsenal of tools for exploration. (B,L,D)

**DAYS 11 AND 12: AT SEA (B,L,D)**

**DAYS 13–17: SOUTH GEORGIA ISLAND**

This is the final resting place for explorer Sir Ernest Shackleton and we'll hoist a toast at his gravesite. Teeming wildlife and breathtaking scenery greet our ship. And at a vast



*These are examples of expedition stops.*

penguin colony you'll see tens of thousands of king penguins! (B,L,D)

**DAYS 18 AND 19: AT SEA (B,L,D)**

**DAYS 20 AND 21: FALKLAND ISLANDS**

The Falklands boast albatross, king cormorants, nesting rockhopper penguins, and Magellanic penguins in their green tussock grass burrows. Stroll the photogenic colonial town of Stanley and visit the evocative Anglican Cathedral with its archway of whalebones. (B,L,D)

**DAY 22: AT SEA**

On our final day at sea, enjoy one last chance to view the marine life of these southern waters. Toast our epic voyage at a festive farewell dinner. (B,L,D)

**DAYS 23 AND 24: DISEMBARK**

USHUAIA, ARGENTINA/BUENOS AIRES (*EXPLORER*) OR SANTIAGO, CHILE (*ORION*)/U.S.

Disembark in Ushuaia. Fly by charter to Buenos Aires or Santiago and connect with your overnight flight home. (Day 23: B,L)



*King penguins.*

**EXPEDITION DETAILS**

**DATES (*Explorer*):** 2018 Nov. 6\*\*; 2019 Feb 14; Nov. 7\*\*; 2020 Feb. 15

**DATES (*Orion*):** 2018 Nov. 5\*; 2019 Feb. 13; 2020 Feb. 17

\*These voyages travel in reverse.

\*\*The Nov. 6, 2018 & Nov. 7, 2019 voyages aboard *Explorer* travel in reverse, and fly direct to the Falklands for embarkation (Miami/Santiago/Falklands, returning Ushuaia/Buenos Aires/Miami). Visit our website for itinerary details.

**Note:** *Orion* departures route via Santiago instead of Buenos Aires. Visit our website.

**SPECIAL OFFERS:**

Book select departures by **Jul. 31, 2018** for **FREE ROUND-TRIP** economy group airfare Miami/Buenos Aires (or Santiago). Plus, we will cover your bar tab and tips to the crew.

**OPTIONAL EXTENSIONS**

Prior to your voyage, add two days in **Buenos Aires (*Explorer*)** or two days in **Santiago (*Orion*)**. Add a four-day post-voyage extension to **Easter Island** (both ships), or three days post-voyage at **Iguazú Falls (*Explorer* only)**. See pages 42-43 or call for details.

**GLOBAL PERSPECTIVES GUEST SPEAKERS**

Travel with mountaineer and adventurer **Peter Hillary**, Nov. 6, 2018.

**NATIONAL GEOGRAPHIC PHOTOGRAPHERS**

Travel with award-winning photographers **Ralph Lee Hopkins**, Nov. 5, 2018; **Phil Schermeister**, Nov. 6, 2018; **Maria Stenzel** Feb. 13, 2019; **Annie Griffiths**, Feb. 14, 2019.



# MAKE THE MOST OF YOUR TIME IN TH



## ADD BUENOS AIRES

### PRE-VOYAGE/2 DAYS/2 NIGHTS

2018/19\*: \$1,890 per person, double occupancy.

Explore vibrant Buenos Aires on a curated two-day extension that showcases the city's beguiling personality. See its famous Beau-Arts architecture, and the brightly painted bohemian communities of La Boca and San Telmo, with their cafes, galleries, and street art. Visit top museums, and take in an authentic tango performance. Add it before *National Geographic Explorer* voyages only on **Antarctica; Antarctica, South Georgia & the Falklands; South Georgia & the Falklands.**

## ADD SANTIAGO CITY, WINE AND CULINARY HIGHLIGHTS

### PRE-VOYAGE/2 DAYS/2 NIGHTS

2018/19\*: \$1,990 per person, double occupancy.

Get a taste for Santiago's world-famous cuisine at premier restaurants, and venture into wine country for tastings at Chile's top wineries. Visit Santiago's charming neighborhoods, backed by the spectacular Andes, and then head outside the city for private tours of historic wineries, meeting the winemakers, and sampling their wares in scenic settings. Available for *National Geographic Orion* voyages only on **Antarctica; Antarctica, South Georgia & the Falklands.**



# E REGION—EXTEND & EXPLORE MORE

## ADD IGUAZÚ FALLS

### POST-VOYAGE/3 DAYS/3 NIGHTS

2018/19\*: \$2,790 per person, double occupancy.

Taller than Niagara, Iguazú Falls' monumental Devil's Throat thunders 350 feet down into a river canyon—an incredible display of power. Get close on catwalks to experience the raw force and noise of the cascades. Stay at the only hotel within Iguazú National Park, a rainforest teeming with unique flora and fauna. Available for *National Geographic Explorer* voyages only on **Antarctica; Antarctica, South Georgia & the Falklands.**



## ADD EASTER ISLAND

### POST-VOYAGE/4 DAYS/4 NIGHTS

2018/19\*: \$4,390 per person, double occupancy.

Take advantage of proximity to one of the most remote and mysterious places on earth—Easter Island. Home to more than 600 giant *moai*, or stone statues, carved by the ancient Rapa Nui, this tiny island is almost 1,200 miles from its nearest island neighbor. Learn from key archaeologists about the ancient Rapa Nui culture that grew up in isolation. Add it after select departures on **Antarctica; Antarctica, South Georgia & the Falklands; South Georgia & the Falklands.**

*\*Note: Due to airline schedules, on select departures the extension spends an additional night in Buenos Aires (Explorer) or Santiago (Orion); additional cost applies.*



*\*Note: On all extensions airfare is not included; additional cost applies.*

▶ FOR DETAILS, VISIT [WWW.EXPEDITIONS.ANTARCTICAEXT](http://WWW.EXPEDITIONS.ANTARCTICAEXT)





## NATIONAL GEOGRAPHIC EXPLORER

**CAPACITY:** 148 guests in 81 outside cabins.

**REGISTRY:** Bahamas. **OVERALL LENGTH:** 367 feet.

*National Geographic Explorer* is a state-of-the-art expedition ship, and the flagship of the Lindblad-National Geographic fleet. It is a fully stabilized, ice-class vessel, with an Ice-1A Super on the forward hull, enabling it to navigate polar passages while providing exceptional comfort. It carries kayaks and a fleet of Zodiac landing craft. An undersea specialist operates a remotely operated vehicle (ROV) and sophisticated video equipment, extending access to the underwater world.

**PUBLIC AREAS:** Bistro bar; chart room; restaurant; global gallery; library, lounge with full service bar and state-of-the-art facilities for films, slideshows and presentations; mudroom with lockers for expedition gear, and observation lounge. Our “open bridge” provides guests an opportunity to meet our officers and captain and learn about navigation.

**CATEGORY 1:** Main Deck with one or two portholes #301-308

**CATEGORY 2:** Main Deck with window #317-320, 335-336

**CATEGORY 3:** Main Deck with window #313-316, 321-328, 337-340, 342, 344, 346, 348, 350

**CATEGORY 4:** Upper and Veranda Decks with window #103-104, 107-108, 201-202, 204-207, 210, 212, 217, 226, 228

**CATEGORY 5:** Upper Deck with balcony #209, 211, 214, 216, 218, 220-222, 224

**CATEGORY 6:** Veranda Deck–Suite #101-102; Upper Deck–Suite with balcony #213

**CATEGORY 7:** Upper Deck–Suite with balcony #215, 219, 230

**CATEGORY A SOLO:** Main Deck with window #309-312, 329-334

**MEALS:** Served in single seatings with unassigned tables for an informal atmosphere and easy mingling. Menu is international cuisine with local flair.

**CABINS:** All cabins face outside with windows or portholes, private facilities and climate controls. Some cabins have balconies. Equipped with ethernet and wifi connections and USB ports for mobile devices.

**EXPEDITION EQUIPMENT:** Zodiac landing craft, a fleet of 36 double kayaks, Remotely Operated Vehicle (ROV), hydrophone, splashcam, underwater video camera, crow’s nest remote controlled camera and video microscope.

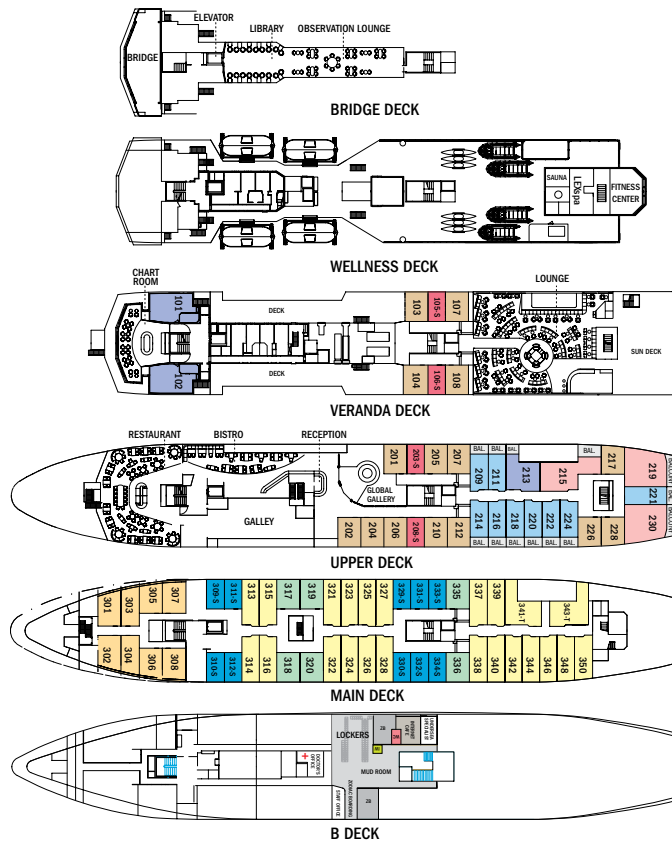
**SPECIAL FEATURES:** A full-time doctor, undersea specialist, Global Perspectives guest speaker, National Geographic photographer, Lindblad-National Geographic certified photo instructor and video chronicler, internet café and laundry.

**WELLNESS:** The vessel is staffed by a wellness specialist and features a glass-enclosed fitness center, outdoor stretching area, LEXspa treatment room and sauna.

**CATEGORY B SOLO:** Upper and Veranda Decks with window #105-106, 203, 208

**CATEGORY 3 TRIPLE:** Main Deck with window #341, 343

**SHARED ACCOMMODATIONS:** Available in Categories 1 and 2. **NOTE:** Cabins #209, 211, 214, 216-218, 220, 222, 224, 226, 228, 303-306—These cabins have one queen-sized bed. All other double cabins have two lower single beds; some can convert to a queen-sized bed. Note: Sole occupancy cabins available in Categories A and B. Third person rates are available in the designated triple occupancy cabins at one-half the double occupancy rate. Cabins #341, 343, 101, 102, 215, 219, and 230 can accommodate a third person.



From top: Category 5 cabin with balcony; a standard bathroom; example of a spacious solo cabin with window.

▶ TAKE A VIRTUAL VIDEO TOUR OF OUR FLAGSHIP AT [WWW.EXPEDITIONS.COM/NGEXPLORER](http://WWW.EXPEDITIONS.COM/NGEXPLORER)

Prices are per person, double occupancy unless indicated as solo.

**WITH COMPLIMENTS, YOUR BAR TAB & ALL CREW GRATUITIES ARE INCLUDED**

ITINERARY	YEAR	CAT. 1	CAT. 2	CAT. 3	CAT. 4	CAT. 5	CAT. 6	CAT. 7	CAT. A SOLO	CAT. B SOLO	ADVANCE PAYMENT	NOTE
Journey to Antarctica – Page 30	2018/19	\$13,890	\$14,940	\$15,380	\$16,550	\$19,990	\$22,800	\$26,600	\$18,680	\$19,220	\$1,500	Includes one hotel night. Immigration fees are not included. Sample Airfares: round-trip Miami/Buenos Aires: Economy from \$1,100; Business from \$3,100. Charter airfare from \$890-\$960 (round-trip Buenos Aires/Ushuaia).
	2019/20	\$14,580	\$15,690	\$16,150	\$17,380	\$20,990	\$23,940	\$27,930	\$19,600	\$20,190		
Journey to Antarctica – Holiday departures – Page 30	2018	\$14,990	\$16,120	\$16,610	\$17,850	\$21,550	\$24,590	\$28,650	\$20,150	\$20,760	\$1,500	Includes one hotel night. Immigration fees are not included. Sample Airfares: round-trip Miami/Buenos Aires: Economy from \$1,100; Business from \$3,100. Charter airfare from \$890-\$960 (round-trip Buenos Aires/Ushuaia).
	2019	\$15,740	\$16,930	\$17,440	\$18,740	\$22,630	\$25,820	\$29,990	\$21,170	\$21,800		
South Georgia and the Falklands – Page 38	2018/19	\$16,990	\$18,130	\$19,130	\$20,350	\$24,580	\$28,350	\$32,880	\$22,660	\$23,910	\$2,500	Includes one hotel night. Immigration fees are not included. Sample Airfares: round-trip Miami/Buenos Aires, return Santiago/Miami: Economy from \$1,100; Business from \$3,100. Charter airfare from \$890-\$960 (Buenos Aires/Ushuaia, return Falklands/Santiago).
	2019/20	\$17,840	\$18,990	\$19,990	\$21,350	\$25,800	\$29,770	\$34,520	\$23,740	\$24,990		
Antarctica, South Georgia & Falklands – Page 40	2018/19	\$23,990	\$25,740	\$26,950	\$28,220	\$34,750	\$39,990	\$46,450	\$32,180	\$33,690	\$3,000	Includes one hotel night. Immigration fees are not included. Sample Airfares: round-trip Miami/Buenos Aires: Economy from \$1,100; Business from \$3,100. Charter airfare from \$890-\$960 (round-trip Buenos Aires/Ushuaia).
	2019/20	\$25,120	\$26,990	\$28,290	\$29,630	\$36,490	\$41,990	\$48,770	\$33,730	\$35,360		





## NATIONAL GEOGRAPHIC ORION

**CAPACITY:** 102 guests in 53 outside cabins.

**REGISTRY:** Bahamas. **OVERALL LENGTH:** 338 feet.

The state-of-the-art *National Geographic Orion* is a fully stabilized, ice-class vessel, with an Ice-1A steel reinforced forward hull, which enables us to navigate polar passages in exceptional comfort.

**PUBLIC AREAS:** Outdoor café, lounge with bar and state-of-the-art facilities for presentations, restaurant, sundeck, reception desk, observation lounge and library, global gallery, and marina platform. Our “open bridge” allows guests to meet our captain and officers and learn about navigation.

**MEALS:** All meals are served in a single seating with unassigned tables for an informal atmosphere and easy mingling. The cuisine is international with local flair, featuring tastes of the regions we explore.

**CATEGORY 1:** Main Deck with oval window  
#316, 318, 319-321

**CATEGORY 2:** Main Deck with oval window  
#302-312, 314, 315, 317

**CATEGORY 3:** Upper Deck—Suite with window  
#401-412, 414-419

**CATEGORY 4:** Bridge Deck—Deluxe suite with window  
#511, 515

**CATEGORY 5:** Bridge Deck—Suite with French balcony  
#501, 503-506, 508

**CABINS:** All cabins feature ocean views, private facilities, climate controls, and a flat-screen TV with DVD/CD player. Equipped with ethernet and wifi connections and USB ports for mobile devices. Some cabins have French balconies. Single cabins in Category 1 and Category 3 include #301, 322, 323, and 512.

**EXPEDITION EQUIPMENT:** Zodiac landing craft, a hydrophone, underwater video cameras, a fleet of 24 double kayaks, crow’s nest camera, and a Remotely Operated Vehicle (ROV).

**SPECIAL FEATURES:** Laundry, a full-time doctor, video chronicler, National Geographic photographer and Lindblad-National Geographic certified photo instructor, plus an undersea specialist and video chronicler.

**WELLNESS:** A wellness specialist, fitness center, LEXspa treatment room and sauna are on board.

**CATEGORY 6:** Bridge Deck—Owner’s suite with French balcony  
#502, 507, 509\*, 510

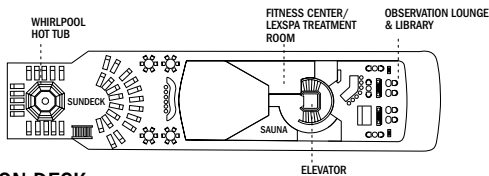
\*Cabin 509 has two windows in lieu of a French balcony.

**CATEGORY 1 SOLO:** Main Deck with oval window or two portholes #301, 322, 323

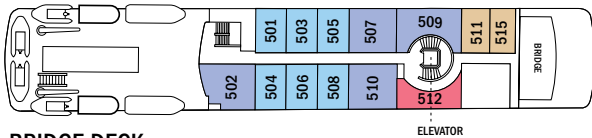
**CATEGORY 3 SOLO:** Bridge Deck—Suite with two windows #512

NOTE: Sole occupancy cabins available in Categories 1 and 3. Shared accommodations available in Categories 1 and 2.

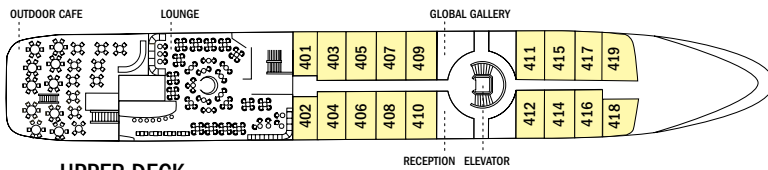
NOTE: Third person rates available at one-half the double occupancy rate in designated triple occupancy cabins.



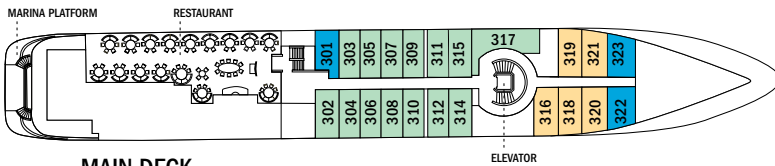
OBSERVATION DECK



BRIDGE DECK



UPPER DECK



MAIN DECK



Nautical chart table in the observation lounge and library; main lounge and bar; Category 3 suite.

▶ TAKE A VIRTUAL VIDEO TOUR OF THE SHIP AT [WWW.EXPEDITIONS.COM/NGORION](http://WWW.EXPEDITIONS.COM/NGORION)

Prices are per person, double occupancy unless indicated as solo.

**WITH COMPLIMENTS, YOUR BAR TAB & ALL CREW GRATUITIES ARE INCLUDED**

ITINERARY	YEAR	CAT. 1	CAT. 2	CAT. 3	CAT. 4	CAT. 5	CAT. 6	CAT. 1 SOLO	CAT. 3 SOLO	ADVANCE PAYMENT	NOTE
Journey to Antarctica – Page 30	2018/19	\$14,170	\$15,230	\$16,960	\$20,500	\$23,440	\$27,290	\$21,250	\$25,440	\$1,500	Includes one hotel night in Santiago. Immigration fees are not included. Sample Airfares: round-trip Miami/Santiago: Economy from \$1,000; Business from \$3,500. Charter Airfare from \$960-\$1,240 (round-trip Santiago/Ushuaia).
	2019/20	\$14,880	\$15,990	\$17,810	\$21,520	\$24,610	\$28,650	\$22,310	\$26,710		
Journey to Antarctica – Holiday departures – Page 30	2018	\$15,380	16,520	\$18,300	\$22,130	\$25,320	\$29,490	\$23,070	\$27,420	\$1,500	Includes one hotel night in Santiago. Immigration fees are not included. Sample Airfares: round-trip Miami/Santiago: Economy from \$1,000; Business from \$3,500. Charter Airfare from \$960-\$1,240 (round-trip Santiago/Ushuaia).
	2019	\$16,150	\$17,350	\$19,220	\$23,240	\$26,590	\$30,960	\$24,220	\$28,830		
Antarctica, South Georgia & Falklands – Page 40	2018/19	\$24,620	\$26,380	\$28,450	\$35,660	\$41,150	\$47,720	\$36,930	\$42,670	\$3,000	Includes one hotel night in Santiago. Immigration fees are not included. Sample Airfares: round-trip Miami/Santiago: Economy from \$1,000; Business from \$3,500. Charter Airfare from \$960-\$1,240 (round-trip Santiago/Ushuaia).
	2020	\$25,850	\$27,700	\$29,870	\$37,440	\$43,200	\$49,990	\$38,780	\$44,790		



## TAKE ADVANTAGE OF OUR SPECIAL OFFERS

**FREE AIRFARE—BOOK BY JUL. 31, 2018:** On select departures with free airfare offers, airfare is based on economy group flights, and must be ticketed by Lindblad Expeditions. In the case that Lindblad's group or charter flights are no longer available at time of booking, we reserve the right to issue a credit. All offers are valid for new bookings only, subject to availability at the time of booking, and may not be combined with other offers and pre- and post-extensions. Call for details.

**COMPLIMENTARY BAR TAB & CREW GRATUITIES:** On all *National Geographic Explorer* and *National Geographic Orion* voyages, we will cover your crew gratuities and bar tab (excepting certain super-premium brands of alcohol).

**BACK-TO-BACK SAVINGS:** Save 10% on any consecutive journeys taken aboard *National Geographic Explorer* and *National Geographic Orion*. This saving is applicable on voyage fares only, and is not valid on extensions or airfare.

**TRAVELING AS A GROUP:** Save 5% when traveling as a group of 8 or more people. Take advantage of these great savings, while enjoying traveling with your friends and family. This saving is applicable to voyage fares only, and is not valid on extensions or airfare. Deposit, final payments, and cancellation policies for group travel vary from our regular policies.

**BRINGING THE KIDS:** We believe sharing an expedition with your kids or grandkids is a life-enhancing experience. So, take \$500 off for each child under the age of 18.

**COMBINING OFFERS:** Certain offers may be combinable, up to two savings opportunities except where noted otherwise. For example, travel with a group of 8 or more on back-to-back expeditions, and take advantage of both savings!



### LOG ON TO EXPEDITIONS.COM

Find everything you need to dream, research or plan travel to 40+ destinations worldwide.

**Be part of our expedition community—Join in! Here's how:**

- ▶ Check our daily blog: [expeditions.com/blog](http://expeditions.com/blog)
- ▶ Like us on Facebook: get inspired and chime in: [facebook.com/LindbladExpeditions](https://facebook.com/LindbladExpeditions)
- ▶ Subscribe to our videos on [youtube.com/lindbladexpeditions](https://youtube.com/lindbladexpeditions)
- ▶ Follow [@LindbladEXP](https://instagram.com/LindbladEXP) on Instagram and Twitter, and find Sven Lindblad on Instagram at [@solindblad](https://instagram.com/solindblad).



## CONSIDERING ANTARCTICA?

There are 6 important questions to ask before you decide with whom to book your Antarctic adventure. This guide answers them all:

1. What kind of ship is best?
2. What safety features are vital?
3. What is the travel operator's experience?
4. How active will your Antarctic experience be?
5. What does the travel operator offer in terms of staff and onboard experts?
6. What is their environmental record & commitment to conservation?

Antarctica is the wildest, most remote and least predictable geography on earth. However, because many cruise lines, sensing a business opportunity, have begun to offer voyages to Antarctica, many travelers may be lulled into a false sense that Antarctica is now somehow "tame."

This guidebook was designed to give travelers information they can use to sort out the options. It will help you make the choice that will best ensure your safety and the quality of your experience.



▶ TO REQUEST A COMPLIMENTARY COPY, VISIT [EXPEDITIONS.COM/ANTARCTICAGUIDE](http://EXPEDITIONS.COM/ANTARCTICAGUIDE)

## RESERVATION INFORMATION

**Costs Include:** All accommodations aboard ships or in hotels per itinerary or similar, all meals and alcoholic beverages (except certain super-premium brands of alcohol) aboard ship, meals on land as indicated, air transportation where indicated as included, shore excursions, sightseeing and entrance fees, special access permits, transfers to and from group flights, use of kayaks, use of cross-country skis and snowshoes (where applicable on Nov. departures), tips (including to ship's crew), taxes and service charges, services of a ship physician, and services of our expedition staff.

**Not Included:** Air transportation (except where shown as included), extensions, passport, visa, immigration fees, meals not indicated, travel protection plan, items of a personal nature, such as e-mail, voyage DVD, laundry.

**Airfare:** For all programs, airfare is an additional cost unless otherwise indicated. Sample airfares are subject to change. We will gladly assist in making your air arrangements for a \$50 per person service fee.

### TERMS & CONDITIONS

**Reservations:** To reserve your place, an advance payment is required at the time of reservation, and is outlined on pages 45 and 47. Payment is accepted by Visa, MasterCard, American Express, Discover, or by check.

Receipt of your initial payment indicates your acceptance of our complete Terms and Conditions. We require written notice at the time of reservation for any physical condition, diet, or treatment requiring special attention.

Once your reservation is confirmed, we urge you to use your personalized online account for important information to help you prepare for your voyage. Managing your documents online will facilitate fast and accurate communication, and allow you to provide us with pertinent details we require, in order to complete your reservation. Your online account gives you access to your Expedition Guide, which includes valuable information specific to your voyage. You can also use your online account to make easy payments, view recommended flights and reading material, packing list, and more.

**Final Payment:** Final payment is due 120 days prior to departure. Payment schedules may vary for certain holiday voyages, due to high demand for these voyages. We reserve the right to cancel your reservation if payment has not been received by final payment due date.

**Travel Protection Plan:** We strongly recommend that you take advantage of our Travel Protection Plan. This plan offers comprehensive coverage to protect you from cancellation fees, costs incurred due to trip delays/interruption, medical assistance, and damaged or lost baggage, and provides medical assistance and evacuation during your travels. Our Travel Protection Plan is available for U.S. and Canadian residents only, and may be purchased any time prior to final payment due date. Travel Protection premiums are non-refundable once plan is purchased.

**Smoking Policy:** Smoking is allowed only in designated outdoor areas.

**Responsibility and Other Terms & Conditions:** Certain other provisions concerning, among other things, limitations of Lindblad Expeditions' and the National Geographic Society's liability for loss of property, injury, illness or death during the voyage will be provided to all guests on the ship's ticket sent prior to departure, and are also available on our website at [www.expeditions.com/terms](http://www.expeditions.com/terms), or upon request. By registering for a trip, the guest agrees to all such terms and conditions.

**Note:** Itineraries and prices listed in this brochure are valid as of publication date, and are subject to change. Under normal conditions, the total expedition cost is guaranteed at the time of booking. However, the published price is determined far in advance of initial departure on the basis of then-existing projections of fuel and other costs. In the event we determine that current costs create an unsustainable financial model, including but not limited to increases in the price of fuel, currency fluctuations, increases in government taxes or levies, or increased security costs, we reserve the right to pass on these costs to you, to cover such unexpected increases. We will always provide a transparent accounting of the reason for such an increase in costs.

### CANCELLATION POLICY

Number of Days Prior to Expedition Start	Per Person Cancellation Fee
180 or more days	\$750*
179–120 days	Advance payment cost
119–90 days	25% of trip cost
89–60 days	50% of trip cost
59–0 days	No refund

\*\$750 will be rewarded in the form of a Lindblad Expeditions Travel Certificate.

This cancellation policy applies to expeditions as well as all other additional services.

The effective date of a cancellation will be the date on which your cancellation notice is received. Note: Airline cancellation policies vary by carrier, as well as the type of fare used to issue your ticket.

Any revisions you make within the cancellation penalty period, such as departure date or choice of voyage, are subject to cancellation fees.

Cancellation policy for certain longer voyages and Holiday departures may vary due to high demand for these voyages. Our Group cancellation policies are listed in the Terms and Conditions section of our website, or you may call us for details. We stress the importance of purchasing a travel protection plan to protect yourself from fees in the event you need to cancel your reservation.

### United States Tour Operators Association \$1 Million Travelers Assistance Program



Lindblad Expeditions, as an Active Member of USTOA, is required to post \$1 Million with USTOA to be used to reimburse, in accordance with the terms and conditions of the USTOA \$1 Million Travelers Assistance Program, the advance payments of Lindblad Expeditions customers in the unlikely event of Lindblad Expeditions bankruptcy, insolvency or cessation of business. Further, you should understand that the \$1 Million posted by Lindblad Expeditions may be sufficient to provide only a partial recovery of the advance payments received by Lindblad Expeditions. More details of the USTOA Travelers Assistance Program may be obtained by writing to USTOA at 345 Seventh Avenue, Suite 1801, New York, New York 10001, or by email to [information@ustoa.com](mailto:information@ustoa.com) or by visiting their website at [www.USTOA.com](http://www.USTOA.com).

We are proud to be a Founding Member of Adventure Collection—a family of the world's most trusted and experienced active travel companies. Each member company of Adventure Collection is dedicated to enriching the lives of its guests and to giving back to the areas in which it travels. For more information visit [www.AdventureCollection.com](http://www.AdventureCollection.com).



©2018 Lindblad Expeditions

Lindblad Expeditions and the Eye are the trademarks of Lindblad Expeditions. All rights reserved.

NATIONAL GEOGRAPHIC and the Yellow Border are the trademarks of the National Geographic Society. All rights reserved.

Photo Credits: Alamy, Alyssa Adler, El Viejo Almacén, Sisse Brimberg & Cotton Coulson, Stewart Cohen, David Cothran, Jonathan Dee, Douglas Gould, Eric Guth, Jennifer Davidson, Erinn Hartman, Ralph Lee Hopkins, Sven-Olof Lindblad, Michael Luppino, Jeff Mauritzen, Michael Melford, Michael S. Nolan, Richard Pasley, Marco Ricca, Rich Reid, Kevin Schafer, Shutterstock, Bruce Tschampel, Mark Thiessen, Caitlyn Webster.

For a list of Lindblad Expeditions' selected honors and awards, go to [www.expeditions.com/awards](http://www.expeditions.com/awards)

### For Reservations:

Contact your travel advisor or Lindblad Expeditions

**1.800.EXPEDITION** (1.800.397.3348)

Reservation Hours: Monday – Friday 9am – 10pm ET

Saturday & Sunday 10am – 5pm ET

Lindblad Expeditions, Inc., 96 Morton Street, New York, NY 10014

Phone: 212.261.9000 • Fax: 212.265.3770

email: [explore@expeditions.com](mailto:explore@expeditions.com) For additional information and online reservations, visit us on the Web: [www.expeditions.com](http://www.expeditions.com)





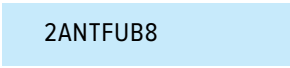
96 Morton Street  
New York, NY 10014

PRSR STD  
U.S. POSTAGE  
PAID  
LINDBLAD  
EXPEDITIONS

Account Number:



Expedition Code:



**1.800.EXPEDITION | WWW.EXPEDITIONS.COM**

♻️ Printed on 10% recycled content paper with soy-based inks. We recommend that you pass this along for others to enjoy or recycle.

ANT-028

**ENJOY COMPLIMENTARY INTERNATIONAL AIRFARE ON SELECT DEPARTURES.** *See page 48 for details.*

## OUR SIGNATURE ANTARCTICA PARKA

It's a functional blend of vintage expedition style and modern high-tech fabrication. It features a separate interior 'café jacket' for optional layering and extra warmth. Collectible and covetable, our parka comes with our 50th Anniversary commemorative embroidered patch. Find additional embroidered patches featuring Antarctic wildlife in the onboard Global Gallery—and turn your parka into a personal memento of an extraordinary experience.

