

# DISCOVER THE ARCTIC & MAKE YOUR MAP

*Learn how as you explore  
the unGoogle-able Arctic*

ABOARD NATIONAL GEOGRAPHIC EXPLORER | 2017-18



Lindblad  
Expeditions



NATIONAL  
GEOGRAPHIC™

## THE ARCTIC DRAWS ADVENTUROUS TRAVELERS LIKE MOTHS TO LIGHT

—perhaps because it's dazzlingly white, and tantalizingly blank. It's one of the last regions to have eluded the Google Earth cartographers: it remains a geography that insists on being discovered in person. Allow yourself to be drawn there—to the Arctic's vivid blankness. Join us to explore the planet's most inspiring geography, and feel your own capacity for wonder expand beyond all known borders.



*Guests have a water-level view of a huge iceberg in Ilulissat.*

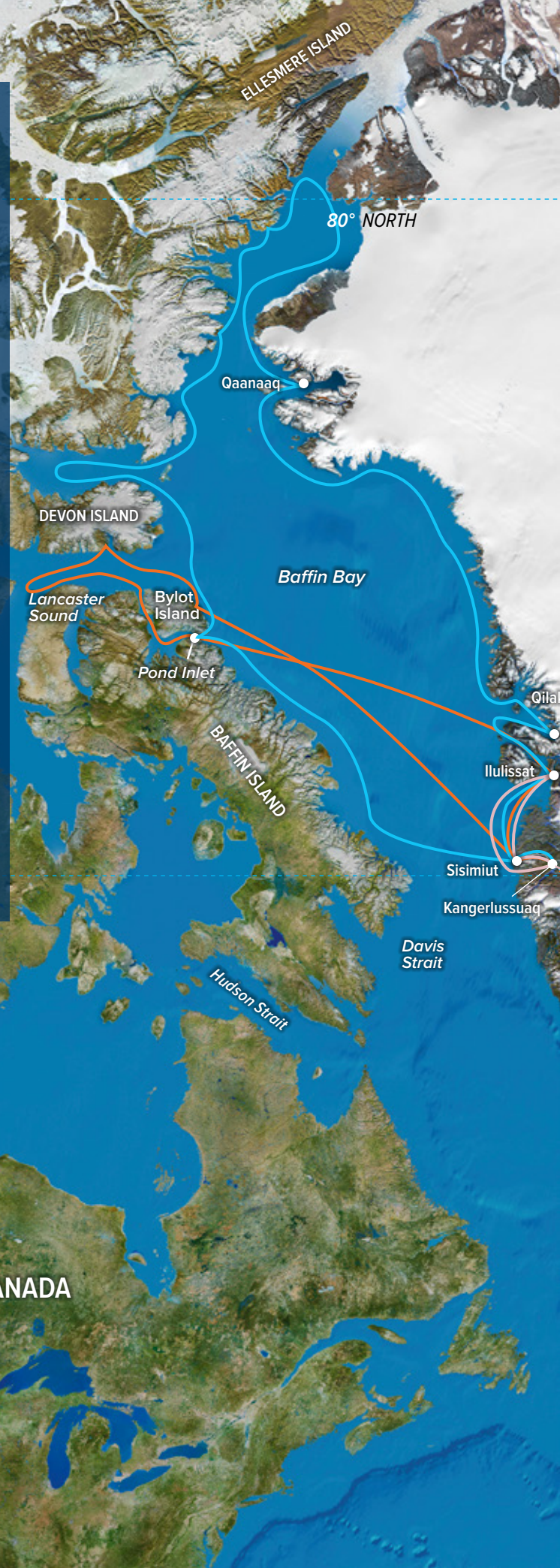
# JUST ADDED!

## THE ART OF MAPMAKING WITH NATIONAL GEOGRAPHIC EXPERTS

For cartographers, a map is a lens through which to view the natural and human world. As we venture into the most remote and little-known regions of the Arctic, we'll be joined by a stellar pair of experts: **geographer, Stephen Cunha**, and his wife, **Mary Beth Cunha, a master cartographer**. Adding extra insight to our team's expertise—they will illuminate the history and challenges of mapping the Arctic. Delve into the evolution of cartography, from the carved bones of the Inuit to the GIS technology of today. Learn mapmaking techniques and create physical and digital maps you can bring home. Or take a more personal route—to create an emotional map of the Arctic you discover.

Stephen Cunha and Mary Beth Cunha join us on the *Exploring Greenland and the Canadian High Arctic* (pg. 8) and *Epic 80°N* (pg. 10) voyages. For their bios, please see page 16.

-  HOT SPRINGS AND ICEBERGS: ICELAND TO WEST GREENLAND-PAGE 4
-  EXPLORING GREENLAND AND THE CANADIAN HIGH ARCTIC-PAGE 8
-  EPIC 80°N: EXPLORING GREENLAND, BAFFIN & ELLESMERE ISLANDS-PAGE 10
-  LAND OF THE ICE BEARS: AN IN-DEPTH EXPLORATION OF ARCTIC SVALBARD-PAGE 12





**GREENLAND  
(KALAALLIT NUNAAT)**

*Greenland Sea*

*Denmark Strait*

**ICELAND**

Reykjavik

*Atlantic Ocean*

**NORWAY**

Oslo

**Svalbard**

Spitsbergen

Nordaustlandet

kitsoq

The Arctic has beckoned explorers from the 10th-century Vikings to countless Northwest Passage seekers, and more. Now 21st-century voyagers seeking exhilarating blanks in our already-all-mapped world can join us to explore, discover, encounter, and feel themselves the first to see and be there.



DEAR TRAVELER,

Back in the early days of our company, I worked on our brochures myself. They were relatively simple affairs, and what I enjoyed the most was the maps that illustrated our offerings. We didn't have the wealth of photography we now have to communicate the potential experience, so the maps were key. I hired a variety of different map artists, and I mean artists—map makers in my mind are—and together we would pore over the drawings to find ways to illustrate them that would depict the possibilities for our prospective guests, and of course, fire their imaginations—because I believe maps do. Maps are not flatly factual; they're as mysterious, in some ways, as they are revealing.

And of course, our prospective guests pored over them too, using them as a preview of the geography and the experience it promised.

I love the Arctic because, while it's been mapped to a great degree, we're thankfully pretty far still from exploring Ellesmere Island on Google Street View. So, I'm delighted that we were able to create the opportunity for you to explore the wilder reaches of the Arctic with us—and with an all-star couple Stephen and Mary Beth Cunha: a master cartographer and a geographer. And, you will also share the expedition with our field correspondent Jennifer Kingsley, who in some respects, paved the way for the uniquely rich experience we have prepared for you.

When you join us on the voyages featured here, you will see extraordinary things. You will learn about change—dramatic change—that is important and compelling to understand. And you will have the privilege, in my view, of learning about some of the four million people who live in the Arctic. And, of viewing your experience through the lens of map-making—getting to learn the art from masters.

In essence, you will be rewarded on a multitude of levels. And you likely will never look at the world the same way again.

So, please explore the pages that follow. Then, join us to explore the high Arctic the way it deserves to be explored—in person.

All the best,



Sven-Olof Lindblad

# THE ARCTIC: NOT JUST WHAT

The second time Sven Lindblad met Jennifer Kingsley, was three years ago, high in Canada, where he and fellow guests were waiting for the weather to clear—to fly to *National Geographic Explorer* and embark a Northwest Passage expedition. By then Jennifer, previously a young naturalist aboard *Explorer's* 2008 inaugural voyages, had several canoeing expeditions behind her, had authored a well-regarded book, *Paddlenorth*, and was asking a transformative question: who is here? She wanted to learn about some of the four million people who live way up north by asking for recommendations that would lead her from one person to the next. Sven, impressed by her credentials, knowledge, and project idea, volunteered to sponsor her as Lindblad's first-ever Field Correspondent.



The result is **Meet the North**, with a mission to explore life in the Arctic, one introduction at a time, and to tell personal stories of modern culture at the top of the world. Jennifer has explored the social web of Longyearbyen, the world's northernmost city; an Iceland beyond tourism; and remote communities of the Canadian Arctic and Greenland. In fact, our 2017 *Hot Springs & Icebergs* itinerary was influenced by her reconnaissance; and it welcomes aboard members of the National School for Greenlandic Clothing, whom Jennifer met during her assignment. Choose any of the following itineraries, and Jennifer's experiences will enhance yours—as she will be aboard the *Explorer* sharing stories and offering a deeper, richer and more personal dimension to your understanding. This people-centric element, together with our expedition team's geographic, cartographic, and wildlife knowledge, plus the perspectives of our guest speakers, will give you the best possible insight into this bellwether region.

*Colorful houses perched on rocks in Sisimiut, Greenland.*



# IT IS, BUT WHO



*Clockwise: Timon Brüggemann with a sled dog in Svalbard, Arctic Norway; Hafsteinn Guðmundsson a farmer who modeled for two figures in the murals of Flatey Island's church, Iceland; the Stanley Cup visits fans on Baffin Island.*

▶ LEARN MORE ABOUT LINDBLAD'S UNIQUE SPONSORSHIP AT [MEETTHENORTH.ORG](https://MEETTHENORTH.ORG)

*“One of the great things about Meet The North is that it is, essentially, an advance guard bringing the good will of Lindblad to the communities...and a conduit for Lindblad-National Geographic to all these communities...Part of the mission is to learn about the North. And the stories that she will bring back from these other communities [will inform] the journeys that we do.”*

*—Wade Davis, Professor of Anthropology, UBC,  
about Jennifer Kingsley's project*

# HOT SPRINGS AND ICEBERGS: ICELAND TO WEST GREENLAND

**9 DAYS/7 NIGHTS—ABOARD NATIONAL GEOGRAPHIC EXPLORER**

PRICES FROM \$6,990 TO \$13,950 (See pages 18-19 for complete prices.)

*Book by June 1, 2017 to guarantee 2017 prices for 2018 departures.*

Discover the true natures of fiery Iceland and icy Greenland on a wide-ranging adventure in a compact timeframe. Over just a week, you'll soak in the heat of Iceland's thermal baths, feel the spray of its thunderous falls, and explore the cool urban capital of Reykjavík. By air, see Greenland's epic ice cap that covers 80% of the country, then sail along its ice edge with glaciers that can stretch over 100 miles and calve some of the largest icebergs on Earth. Venture into Greenland's long fjords choked with massive bergs and call at small communities to meet the hardy inhabitants. And it's all timed to see the legendary Northern Lights and their cascades of color.

## EXPEDITION HIGHLIGHTS

- ▶ Feel the extreme contrasts of fire and ice from the warmth of the Blue Lagoon's outdoor thermal baths to kayaking amid shimmering glacial ice.
- ▶ See the towering ice edge of Greenland up close and sail among massive icebergs.
- ▶ Actively explore: hike, kayak, swim, horseback ride, and Zodiac cruise.
- ▶ Enjoy an exclusive, private dinner on Viðey Island accompanied by acclaimed local musicians.
- ▶ Take in opportunities to view the Northern Lights in both Iceland and Greenland.

## GLOBAL PERSPECTIVES GUEST SPEAKER

**Aleqa Hammond**

Former Prime Minister of Greenland, she is the first female to hold the position. She has extensive tourism experience and was the commissioner of the Inuit Circumpolar Council. She is aboard in 2017.



*Visit our website to read staff and guest speaker bios for these expeditions.*

*Northern lights, Iceland.*



**DAYS 1 AND 2: U.S./ KEFLAVÍK, ICELAND/REYKJAVÍK**

Fly overnight to Reykjavík, the world's northernmost capital. Choose an excursion to swim in the thermal baths of the Blue Lagoon or learn about the hot springs and volcanic activity at the Geothermal Power Plant and experience an Icelandic horse show at the Eldhestar Farm and Riding Centre. (Day 2: L)

**DAY 3: REYKJAVÍK**

Today you may choose from several active options. Go hiking across the rolling scrublands just outside the city, ride an Icelandic horse through the Hafnarfjörður lava field, or join a cooking class at the Salt Kitchen. Or take a full day's excursion around the Golden Circle. Tonight, a special treat: ride a ferry to scenic Viðey Island, where an exclusive dinner and musical performance await. (B,L,D)



Guests kayaking in Greenland.

**DAY 4: REYKJAVÍK/KANGERLUSSUAQ, GREENLAND/EMBARK**

Choose a walking or biking tour of Reykjavík in the morning followed by a chartered flight to Greenland and take in stunning views over the Greenland ice cap. Embark *National Geographic Explorer*. (B,L,D)

**DAY 5: GREENLAND'S WEST COAST & SISIMIUT**

Dozens of deep fjords carve into Greenland's west coast, many with glaciers fed by the ice cap that covers 80% of the country. Trace this ragged coastline, and search for humpback and minke whales. At Sisimiut, a former whaling port, visit the museum, wander amid a jumble of wooden 18th-century buildings, and welcome aboard students (*at right*) studying the arts of making Greenlandic national clothing—a cornerstone of the traditional culture. (B,L,D)



**DAY 6: DISKO BAY & ILULISSAT**

Sail into Disko Bay and set out to explore a tongue of the Greenland ice cap. Take an extraordinary cruise among towering icebergs. Explore the archaeological site at Sermermiut. Then, see dramatic icebergs choking the 50km-long Ilulissat Icefjord, at the head of which sits the immense, calving Jakobshavn Glacier. (B,L,D)

**DAY 7: EXPLORING GREENLAND'S WEST COAST**

This is our final day in the scenic fjords to Zodiac cruise, kayak, and hike across the tundra. (B,L,D)

**DAY 8: KANGERLUSSUAQ/DISEMBARK/REYKJAVÍK, ICELAND**

Disembark in Kangerlussuaq, fly by charter for the second time over the Greenland ice cap to Reykjavík and settle into your hotel. (B,L,D)

**DAY 9: REYKJAVÍK/KEFLAVÍK/U.S.**

Have a guided tour of Reykjanes Peninsula, learn first-hand about the country's innovative approach to geothermal energy, or if you haven't yet experienced the Blue Lagoon, now's your chance! Transfer to Keflavík for flights home. (B,L)

**EXPEDITION DETAILS**

**DATE:** 2017 Aug. 22, 26; 2018 Sep. 5, 9

**SPECIAL OFFERS:**

Book now and receive complimentary round-trip **international economy air** between New York and Keflavík as well as **charter airfare** between Reykjavík and Kangerlussuaq on the 2017 departures. Or book a 2018 departure and receive complimentary charter airfare only. We will also cover your bar tab and tips for the crew on all departures. Call for details.

**NATIONAL GEOGRAPHIC PHOTOGRAPHER**

Join award-winning National Geographic photographer **Michael Melford** on the 2017 departures.

[Learn more at expeditions.com/photo](http://expeditions.com/photo)



Reykjavík.



Students at the National School for Greenlandic Clothing.



# BEARS, BIG ICE & MO HIG

*Polar bear jumping between ice floes.*



# RE: HIGHLIGHTS OF THE WILD ARCTIC

In the High Arctic, we concentrate in three distinct areas, which have significant populations of polar bears: Svalbard, the Norwegian Arctic, and the east coasts of Baffin and Ellesmere Islands in Canada. These are stunningly beautiful wild places with awe-inspiring mountains, glaciers, icebergs, and a great variety of wildlife. An odd consequence of diminishing sea ice is that the polar bears are more concentrated on the sea ice that remains, and upon which they depend for hunting seals—which tends to add significantly to the bear “count” we tally on every voyage. Sven has noted that during his formative years in Africa, he learned it’s best to go in the dry season when all animals congregate at fewer water holes, making finding and observing them easier.

Forty years ago, when we began exploring the the Arctic, one bear was an achievement, because the ice was so impenetrable and covered so much of our route. Now, we have technology that provides daily ice movement reports. We’ve gained exponential knowledge about the Arctic over our years exploring here which greatly contributes to our proven ability to deliver the #1 thrill travelers come to the Arctic for: seeing polar bears in their natural habitat, the sea ice. It’s an experience you should have, and will, if you join us. Not only will you see many polar bears, but you will become intimately aware of the Arctic, and return home with a clear understanding of the paraphrase: “*What happens in the Arctic doesn’t stay in the Arctic.*”

# EXPLORING GREENLAND AND THE CANADIAN HIGH ARCTIC

**15 DAYS/13 NIGHTS—ABOARD NATIONAL GEOGRAPHIC EXPLORER**

PRICES FROM: \$13,990 to \$27,000 (See pages 18-19 for complete prices.)

**Book by June 1, 2017 to guarantee 2017 prices for 2018 departures.**

Venture deep into the far reaches of the Arctic, a land where polar bears roam, walrus loll, and hardy Inuit communities maintain their traditional way of life. Aboard *National Geographic Explorer*, trace the rugged fjords of Greenland and navigate the mouth of Canada's legendary Northwest Passage. Spot polar bears on the pack ice, watch for a wide variety of whales—from minke and bowhead whales to the rare narwhal. Get up close to massive glaciers, and hike the wild islands that dot Canada's northern shores.

## EXPEDITION HIGHLIGHTS

- ▶ Glide between soaring icebergs at the mouth of the Ilulissat Icefjord, a UNESCO site.
- ▶ Discover the incredible wildlife and landscapes of the Canadian High Arctic.
- ▶ Observe polar bears, walrus, ringed seals and, with luck, narwhals in their natural habitat.

*An inquisitive polar bear.*

## GLOBAL PERSPECTIVES GUEST SPEAKER

**Dr. Robert Bindschadler**

Dr. Bindschadler's career spanned more than 30 years at NASA where he retired in 2010 as the Chief Scientist of NASA's Hydrospheric and Biospheric Sciences Laboratory and a Senior Fellow of the Goddard Space Flight Center. He is aboard in 2017.



*Visit our website to read staff and guest speaker bios for this expedition.*



**DAYS 1 AND 2: U.S./KEFLAVÍK, ICELAND/REYKJAVÍK**

Fly overnight to Keflavík. Transfer to Reykjavík and take a guided overview of the old town, including Hallgrímskirkja Cathedral. Or choose to explore the Blue Lagoon and soak in the geothermal waters. After lunch, check-in to our hotel. (Day 2: L,D)



Bethel church in Sisimiut.

**DAY 3: REYKJAVÍK/KANGERLUSSUAQ, GREENLAND/EMBARK**

Fly by chartered aircraft to Greenland. Embark *National Geographic Explorer*. (B,L,D)

**DAY 4: GREENLAND'S WEST COAST & SISIMIUT**

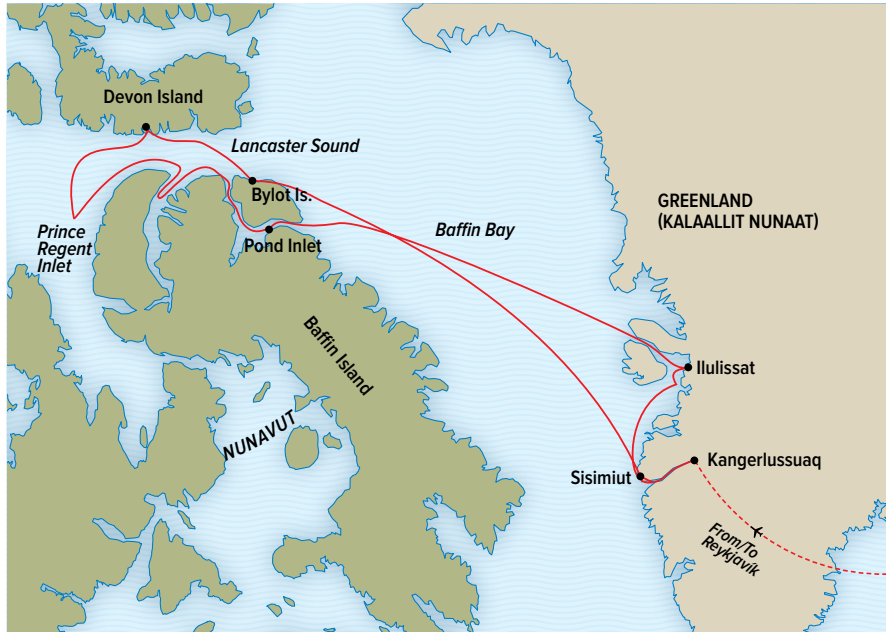
Dozens of deep fjords carve into Greenland's west coast, many with glaciers fed by the ice cap that covers 80% of the country. Trace this ragged coastline, and search for humpback and minke whales. At Sisimiut, a former whaling port, visit the museum and wander amid a jumble of wooden 18th-century buildings. There are several walking options to explore in and around town. (B,L,D)

**DAY 5: DISKO BAY & ILULISSAT**

Sail into Disko Bay and set out to explore a tongue of the Greenland ice cap. Take an extraordinary cruise among towering icebergs. Take a hike to the UNESCO archaeological site at Sermermiut, and view the Ilulissat Icefjord. (B,L,D)

**DAY 6: AT SEA IN BAFFIN BAY**

A relaxing day at sea allows for time to hear talks from our staff about the fascinating history of polar exploration. Go up to the bridge to watch for whales. Head up to the library. Enjoy the sauna or have a rigorous workout in the fitness center, with its "million dollar views." Or simply relax in the Observation Lounge. (B,L,D)



**DAYS 7-10: EXPLORING THE CANADIAN HIGH ARCTIC**

Carved by Ice Age glaciers, Lancaster Sound is the eastern gateway to the Arctic Archipelago. European explorers like William Baffin first ventured here in the 15th century to search for the Northwest Passage. The sound has been a favorite Inuit hunting and fishing location for hundreds of years. Our days here will be spent searching for ringed seals, arctic foxes, walrus, and polar bears, as well as beluga and bowhead whales. We may even see the elusive narwhal, an arctic whale known for the long, spiraling tooth that projects up to ten feet from its upper jaw. (B,L,D)

**DAYS 11-13: EASTERN BAFFIN ISLAND**

Using our years of experience in judging ice conditions, we make the most of the eastern Baffin shores. Hike the tundra in search of caribou and arctic foxes, or follow our botanist to learn more about the hardy arctic plants. We'll cruise the coastline in search of walrus and other icons of the Canadian North. (B,L,D)

**DAYS 14 AND 15: KANGERLUSSUAQ/ DISEMBARK/REYKJAVÍK/KEFLAVÍK/U.S.**

Disembark in Kangerlussuaq and take a charter flight to Reykjavík and overnight in our hotel. The next day transfer to the airport in Keflavík for flights home. (Day 14: B,L,D; Day 15: B,L)

**EXPEDITION DETAILS**

**DATES:** 2017 Jul. 23; 2018 Aug. 8\*

\* This departure is one day less, flies direct from Newark to Kangerlussuaq and ends in Reykjavík for two full days and nights including a Golden Circle tour. Call for details.

**SPECIAL OFFERS:**

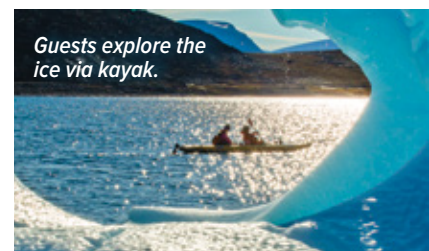
Book now to receive **complimentary international economy airfare** for the 2017 departure (New York/Keflavík). Also, we will cover your bar tab and tips for the crew. Call for details.

**OPTIONAL EXTENSION**

Take a 1-day pre-voyage extension to **Reykjavík's Golden Circle & Blue Lagoon** (2017 only). See website for details.

**NATIONAL GEOGRAPHIC PHOTOGRAPHER**

Join award-winning National Geographic photographer **Michael Melford** in 2017. **Learn more at [expeditions.com/photo](http://expeditions.com/photo)**



# EPIC 80°N: EXPLORING GREENLAND, BAFFIN & ELLESMERE ISLANDS

24 DAYS/22 NIGHTS—ABOARD NATIONAL GEOGRAPHIC EXPLORER

PRICES FROM: \$25,990 TO \$49,640 (See pages 18-19 for complete prices.)

Book by June 1, 2017 to guarantee 2017 prices for 2018 departures.

Adventure and the unexpected star on this epic voyage to vast and wild shores. Our recent extraordinary experiences aboard *Explorer* at remote Ellesmere Island made us excited to return. We'll explore familiar and new parts of Baffin Island and Lancaster Sound, then make our way up the beautiful coast of Ellesmere Island, which reaches farther north than any other land, except for Greenland, and we allow time to go as far north as the ice allows. We then trace the rarely explored coast of northwest Greenland, going places we've never been—where tidewater glaciers of extreme beauty dominate.

## EXPEDITION HIGHLIGHTS

- ▶ Experience unbridled 21st-century exploration, as we venture deep into the far reaches of the ice to Zodiac cruise, kayak, and hike the tundra.
- ▶ Encounter hardy Inuit communities, and learn the legacy of the ancient Thule and Dorset at remote archaeological sites, some marvelously preserved.
- ▶ Observe polar bears, musk oxen, and perhaps elusive narwhals.

## GLOBAL PERSPECTIVES GUEST SPEAKERS

**Eva Ariak**

Premier Eva Qamaniq Ariak is the second Premier of Nunavut. She is returning to *Explorer* for the second year, and her background as Languages Commissioner in Nunavut provides connection and great insight into the local language and culture. She is aboard in 2017.



**Patricia Sutherland**

She has explored the Aboriginal occupations of Arctic Canada, the art of the Dorset Palaeo-Eskimos, and the archaeology of 19th-century British Arctic exploration over more than three decades of archaeological research and fieldwork. She is aboard in 2017.



Visit our website to read staff and guest speaker bios for this expedition.

*A Zodiac ride amid the big ice of Philpots Island.*

**DAYS 1 AND 2: U.S./KEFLAVÍK, ICELAND/ REYKJAVÍK**

Overnight flight to Keflavik. Transfer to Reykjavik and take a guided overview of the old town, including Hallgrímskirkja Cathedral. Or choose to explore the Blue Lagoon and soak in the geothermal waters. After lunch, check in to our hotel. (Day 2: L,D)

**DAY 3: REYKJAVÍK/KANGERLUSSUAQ, GREENLAND/EMBARK**

Fly by chartered aircraft to Greenland. Embark *National Geographic Explorer*. (B,L,D)



Brightly painted houses, Greenland.

**DAY 4: GREENLAND'S WEST COAST & SISIMIUT**

Dozens of deep fjords carve into Greenland's west coast, many with glaciers fed by the ice cap that covers much of the country. We search for humpback and minke whales, and at Sisimiut, a former whaling port, visit the museum and wander amid a jumble of wooden 18th-century buildings. (B,L,D)

**DAYS 5-10: THE CANADIAN HIGH ARCTIC**

We begin our exploration of the Canadian High Arctic with a visit to the small Inuit community of Pond Inlet, Nunavut. We will explore some of the beautiful bays and inlets along Baffin Island's northern coast and Lancaster Sound. We search for ringed seals, arctic foxes, and polar bears, as well as beluga and bowhead whales. Perhaps even see the elusive narwhal, known for the long, spiraling tooth that projects up to ten feet. Possible stops to explore Beechey Island and the remains of the Franklin expedition's winter quarters and Lancaster Sound for polar bears on ice. (B,L,D)

**DAY 11: DEVON ISLAND**

At the entrance to the Northwest Passage, we encounter Devon Island. Walk with our ship's archaeologist to learn about the Thule people

that once inhabited this region and were the ancestors of all modern Inuit. At Philpots Island we hike the tundra and search for wildlife, and perhaps musk oxen. (B,L,D)

**DAYS 12 AND 13: ELLESMERE ISLAND**

Depending on ice and weather, head north up the beautiful and remote east coast of Ellesmere Island, where *Explorer* first ventured in 2014. Cruise along scenic Smith Bay bordered by steep mountains and tumbling glacial ice. Search for polar bears from the ship or hike and kayak in picturesque surroundings. Our flexible itinerary stops may include Skraeling Island, an archaeological find that shows the Norse once traded with the native Inuit here at Ellesmere, or we might go for a Zodiac cruise in Makinson Inlet, where tidewater glaciers tumble down to the sea. (B,L,D)

**DAYS 14 AND 15: FARTHER NORTH**

Explore to 80°N and hopefully beyond, if the ice allows. Our experienced captain and expedition team as well as our technological resources chart where the ice is penetrable. (B,L,D)

**DAYS 16-19: NORTHWEST GREENLAND**

The remote coast of Northwest Greenland is terra incognita with a history of expeditions: Peary, Hall and more. *Explorer* will be in true expedition mode as we search this vast uninhabited region for prolific wildlife. Walk on land where humans have never set foot. Encounter glaciers and fjords. Visit the small community of Etah to learn about the people of the Far North. (B,L,D)



Inuit family "selfie."

**DAY 20: QILAKITSOQ**

Today we are back in familiar waters, stopping at Qilakitsoq, where a collection of mummies dating back to 1475 was discovered in 1972 and featured on the cover of *National Geographic* magazine. (B,L,D)

**DAY 21: DISKO BAY & ILULISSAT**

Sail into Disko Bay and set out to explore a



tongue of the Greenland ice cap. Take an extraordinary cruise among towering icebergs. Take a hike to the UNESCO archaeological site at Sermermiut, and view the Ilulissat Icefjord. (B,L,D)

**DAY 22: GREENLAND'S WEST COAST**

Our final day in the scenic fjords. Zodiac cruise, kayak, or hike across the tundra. (B,L,D)

**DAY 23: KANGERLUSSUAQ/DISEMBARK/ REYKJAVÍK, ICELAND**

Disembark in Kangerlussuaq, and after a tour of the city, fly by charter to Reykjavik for stunning views over the Greenland icecap. Check in to our hotel. (B,L,D)

**DAY 24: REYKJAVÍK/KEFLAVÍK/U.S.**

Have a guided tour of Reykjanes Peninsula. Transfer to Keflavik for flights home. (B,L)

**EXPEDITION DETAILS**

DATE: 2017 Aug. 3; 2018 Aug. 17

**SPECIAL OFFER:**

Travel on this voyage and we will cover your bar tab and tips for the crew.

**OPTIONAL EXTENSIONS**

Take a 3-day post-voyage extension to [Iceland](#), or a 1-day post-voyage extension to [Reykjavik's Golden Circle & Blue Lagoon](#). See website for details.

**NATIONAL GEOGRAPHIC PHOTOGRAPHER**

National Geographic photographer **Keith Ladzinski** joins in 2017. [Learn more at \*\*expeditions.com/photo\*\*](#)



# LAND OF THE ICE BEARS: AN IN-DEPTH EXPLORATION OF ARCTIC SVALBARD

**11 DAYS/9 NIGHTS—ABOARD NATIONAL GEOGRAPHIC EXPLORER**

PRICES FROM: \$10,220 to \$18,890 (See pages 18-19 for complete prices.)

**Book by June 1, 2017 to guarantee 2017 prices for 2018 departures.**

A high Arctic archipelago situated between Norway and the North Pole, Svalbard is a place of deep fjords, snowcapped mountains, massive sheets of ice, and magnificent polar bears. Travel under the midnight sun aboard *National Geographic Explorer*, and experience nature in its purest form.

## EXPEDITION HIGHLIGHTS

- ▶ Search for the very symbol of the Arctic—polar bears—and observe these majestic creatures in their natural habitat, on the sea ice.
- ▶ Take naturalist-led walks, and cruise among beautiful icebergs in a Zodiac or a kayak.
- ▶ Experience the legendary midnight sun: the ethereal light of the northern summer, when the sun never sets.
- ▶ Watch for walrus, bearded and ringed seals, arctic foxes, and reindeer.

## GLOBAL PERSPECTIVES GUEST SPEAKERS

**Frances A. Ulmer**

The Chair of the US Arctic Research Commission and a Special Advisor on Arctic Science and Policy. She is aboard May 29, 2017.



**Dr. Joe McConnell**

The Director of the Ultra-Trace Ice Core Chemistry Laboratory who studies ancient air trapped in ice to map human climate impact. He is aboard Jun. 19, 2017.



**Peter Hillary**

He has summited the highest mountain on each of the seven continents, and established a new overland route to the South Pole. He is aboard Jun. 5 and 12, 2017.



*A mother polar bear with her two cubs.*



**DAYS 1 AND 2: U.S./OSLO, NORWAY**  
 Depart on an overnight flight to Oslo. Upon arrival, check into the Thon Hotel Bristol (or similar). Explore this charming city, stroll among the famed Vigeland sculptures—hundreds of life-size human figures set in terraced parkland. Visit the Fram Museum, dedicated to the wooden ship sailed by Norwegian explorers Nansen and Amundsen. (Day 2: B)

**DAY 3: OSLO/LONGYEARBYEN/ EMBARK**  
 Depart Oslo on a charter flight, and enjoy breathtaking vistas en route to Longyearbyen. Embark *National Geographic Explorer*, your base for the next six days. (B,L,D)

**DAYS 4–9: EXPLORING SVALBARD**  
 This voyage is undertaken in the spirit of discovery, and our travel in the archipelago is exploratory by design. In a region ruled not by humans but by polar bears, we let nature guide our course. Svalbard lies north of the Arctic Circle, where the summer midnight sun never sets. With our fully stabilized ice-class expedition ship, we are able to probe the ice in search of wildlife; our exact day-to-day itinerary remains flexible, depending on local ice and weather conditions. Zodiacs and kayaks take us closer to experience the region’s geologic features and the wildlife that flourishes during the summer months. With our National Geographic photographer and a seasoned naturalist staff, venture to the foot of vast tidewater glaciers,

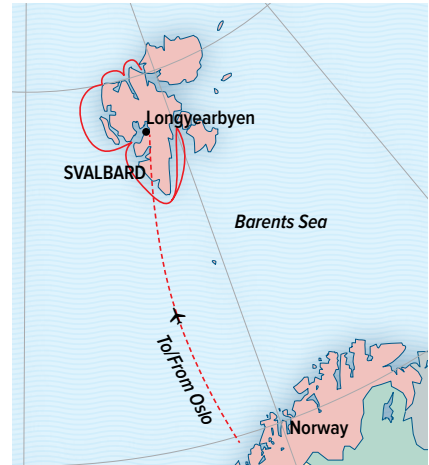
kayak among sparkling icebergs, and explore fjords that split the coastline. Hike through miniature gardens blooming on the tundra; and search the edge of the pack ice for polar bears, walrus, seals, reindeer, and arctic foxes. Svalbard is one of the best places on the planet to observe majestic polar bears in their natural habitat. (B,L,D)



*A reindeer lopes along the tundra.*

**DAY 10: LONGYEARBYEN/ DISEMBARK/OSLO**  
 In Longyearbyen, the largest settlement in Svalbard, disembark and enjoy time to explore. Founded by an American coal executive in 1906, this is one of the northernmost human settlements on Earth. Fly back to Oslo and overnight at the SAS Radisson Blu Airport Hotel. (B,L)

**DAY 11: OSLO/U.S. (B)**



**EXPEDITION DETAILS**

**DATES:** 2017 May 29; Jun. 5, 12, 19  
 2018 May 16, 23, 30

**SPECIAL OFFER:**

Travel on any of these voyages and we will cover your bar tab and tips for the crew.

**OPTIONAL EXTENSIONS**

Add a five-day pre-voyage extension to [Norway’s Fjords](#), or a four-day post-voyage extension to [Iceland’s Natural Wonders](#). See website for details.

**NATIONAL GEOGRAPHIC PHOTOGRAPHERS**

Join **Massimo Bassano** Jun. 5 & 12, 2017. Massimo has photographed for *National Geographic Traveler* and taught numerous photography workshops.



Travel with National Geographic Photographer **Becky Hale**, May 29, 2017 and climbing legend **Tommy Heinrich**, Jun. 19, 2017.

Learn more at [expeditions.com/photo](http://expeditions.com/photo)



*Walrus close-up.*



*Kayakers off Svalbard’s pristine coast.*



*Zodiac cruise through basalt rock formations, Greenland.*



*Upper left: Guests enjoy kayaking, Spitsbergen Island. At right: An undersea specialist accompanies each voyage on the National Geographic Explorer. These marine experts go on regular dives, taking video footage of their discoveries that you can watch in vivid HD from the comfort of the ship. The Explorer is also equipped with an ROV capable of exploring depths of up to 1,000 feet.*



# PERFECT PLATFORM FOR EXPLORATION

*National Geographic Explorer* is a genuine expedition ship, not a cruise ship masquerading as one. Therefore, it's uniquely equipped to facilitate our brand of keen seeing and experiencing—with state-of-the-art tools for exploration. An unparalleled base for discovery, *Explorer* enables the fullest expression of our expedition style: an intimate, authentic, learning-oriented environment.

## COOL TOOLS ABOARD NATIONAL GEOGRAPHIC EXPLORER

- ✓ **Remotely Operated Vehicle (ROV)** that can explore down to 1,000 feet to reveal the fascinating depths of the polar ocean
- ✓ **Remote-controlled crow's nest camera** with real-time footage broadcast on high definition LCD video screens in each cabin
- ✓ **Electronic chart system** broadcasting as a channel in the cabins
- ✓ **Professional video chronicler** who captures every facet of your unique adventure, creating an edited DVD that will be available for purchase
- ✓ **Chart room** with nautical maps and a coffee, tea, and hot cocoa station
- ✓ **Open invitation to visit the ship's bridge** and observe navigation firsthand
- ✓ **Observation lounge** that provides panoramic vistas
- ✓ **Large fleet of MK-5 Zodiacs**, the finest expedition landing craft in the world
- ✓ **Fleet of double kayaks** (36 on the *Explorer*) and a specially designed kayak launch platform that enables kayak deployment from icy areas

# A+ EXPEDITION TEAMS

## OUR GLOBAL PERSPECTIVES GUEST SPEAKERS ADD EXTRA INSIGHT TO OUR EXPEDITION TEAM'S EXPERTISE



### MARY BETH CUNHA

Now a lecturer in Geospatial Science at Humboldt State University, her cartographic career includes positions with the National Park Service, USGS Earth Resources Observation & Science Alaska

Field Office, UC Davis, Allan Cartography, private consulting and more. She is aboard **Exploring Greenland and the Canadian High Arctic, Jul. 23, 2017** and **Epic 80°N, Aug. 3, 2017**.



### STEPHEN F. CUNHA

Currently a geography professor at California's Humboldt State University, he spent four years developing the Pamir National Park in eastern Tajikistan, named a UNESCO World Heritage Site in 2013, and much more. He is the author of National Geographic books including *Our Fifty States*. He is aboard **Exploring Greenland and the Canadian High Arctic, Jul. 23, 2017** and **Epic 80°N, Aug. 3, 2017**.

and much more. He is the author of National Geographic books including *Our Fifty States*. He is aboard **Exploring Greenland and the Canadian High Arctic, Jul. 23, 2017** and **Epic 80°N, Aug. 3, 2017**.



### FRANCES ULMER

Frances A. Ulmer is the Chair of the U.S. Arctic Research Commission, appointed by President Obama in 2011. In 2014, Secretary Kerry asked Ms. Ulmer to serve as a Special Advisor on Arctic Science

and Policy. She has served as Chancellor of the University of Alaska Anchorage and mayor of Juneau. She is aboard **Land of the Ice Bears, May 29, 2017**.



### DR. ROBERT BINDSCHADLER

Dr. Robert Bindschadler's career spanned more than 30 years at NASA. He is a Fellow of the American Geophysical Union and comments on glaciological impacts of the climate

on the world's ice sheets and glaciers. He is aboard **Exploring Greenland and the Canadian High Arctic, Jul. 23, 2017**.



### PATRICIA SUTHERLAND

Patricia Sutherland has explored the Aboriginal occupations of Arctic Canada, the art of the Dorset Palaeo-Eskimos, and the archaeology of 19th-century British Arctic exploration over more than three

decades of archaeological research and fieldwork. She is aboard **Epic 80°N, Aug. 3, 2017**.



### DR. JOE MCCONNELL

Dr. Joe McConnell is an environmental and climate researcher at Nevada's Desert Research Institute where he is Director of the Ultra-Trace Ice Core Chemistry Laboratory. He studies ancient air trapped

in ice to map human climate impact. He is aboard **Land of the Ice Bears, Jun. 19, 2017**.



### PETER HILLARY

Born into mountaineering royalty, the son of Sir Edmund Hillary, Peter Hillary has summited the highest mountain on each of the seven continents. In 2016 he recreated Ernest Shackleton's trek across South

Georgia on a Lindblad-National Geographic expedition. He is aboard **Land of the Ice Bears, Jun. 5 and 12, 2017**.



### PREMIER EVA AARIAK

Premier Eva Qamaniq Aariak is a Canadian politician and was the second Premier of Nunavut. Her background as Languages Commissioner in Nunavut provides connection and insight into the local language

and culture. She is aboard **Epic 80°N, Aug. 3, 2017**.



## NATIONAL GEOGRAPHIC PHOTOGRAPHERS ABOARD

Head into your Arctic adventure in the company of top **National Geographic photographers**, assured of capturing the key moments of your experience. And, they're flanked by **Lindblad-National Geographic certified photo instructors**—naturalists trained by National Geographic photographers, to assist you with your camera settings, the basics of composition, wildlife observation, and more. You don't have to consider yourself a photographer to participate in the fun and rewards of "aim & create." You'll return home with your best photos ever, and a lifelong skill.

Joining us this season are **National Geographic photographers Tommy Heinrich, Massimo Bassano, Becky Hale, Keith Ladzinski, and Michael Melford.**



We've teamed up with renowned retailer B&H Photo Video for our Expedition Photography program. That means you have access to the B&H Locker aboard *National Geographic Explorer*, stocked with new, top quality photo gear—to try out with our compliments. View teaching videos from our 4-day photography event with B&H at [www.optic2016.com](http://www.optic2016.com) and access special Arctic-oriented gear recommendations, packages and booked-guest discounts. Call an expedition specialist for more details.

▶ LEARN MORE AT [WWW.EXPEDITIONS.COM](http://WWW.EXPEDITIONS.COM) PHOTO AND FIND INTERESTING BIOS FOR ALL PHOTOGRAPHERS AT [WWW.EXPEDITIONS.COM/NGPS](http://WWW.EXPEDITIONS.COM/NGPS)



*Curious polar bear greeting guests aboard the National Geographic Explorer, Canadian High Arctic.*



## NATIONAL GEOGRAPHIC EXPLORER

**CAPACITY:** 148 guests in 81 outside cabins.  
**REGISTRY:** Bahamas. **OVERALL LENGTH:** 367 feet.

*National Geographic Explorer* is a state-of-the-art expedition ship, and the flagship of the Lindblad fleet. It is a fully stabilized, ice-class vessel, with an ice-reinforced hull, enabling it to navigate polar passages while providing exceptional comfort. It carries kayaks and a fleet of Zodiac landing craft. An undersea specialist operates a remotely operated vehicle (ROV) and sophisticated video equipment, extending access to the underwater world.

**PUBLIC AREAS:** Bistro bar; chart room; restaurant; global gallery; library, lounge with full service bar and state-of-the-art facilities for films, slideshows and presentations; mudroom with lockers for expedition gear, and observation lounge. Our “open bridge” provides guests an opportunity to meet our officers and captain and learn about navigation.

**CATEGORY 1:** Main Deck with one or two portholes  
#301-308

**CATEGORY 2:** Main Deck with window #317-320, 335-336

**CATEGORY 3:** Main Deck with window #313-316, 321-328, 337-340, 342, 344, 346, 348, 350

**CATEGORY 4:** Upper and Veranda Decks with window #103-104, 107-108, 201-202, 204-207, 210, 212, 217, 226, 228

**CATEGORY 5:** Upper Deck with balcony #209, 211, 214, 216, 218, 220-222, 224

**CATEGORY 6:** Veranda Deck–Suite #101-102;  
Upper Deck–Suite with balcony #213

**CATEGORY 7:** Upper Deck–Suite with balcony #215, 219, 230

**MEALS:** Served in single seatings with unassigned tables for an informal atmosphere and easy mingling. Menu is international with local flair.

**CABINS:** All cabins face outside with windows or portholes, private facilities and climate controls. Some cabins have balconies. Equipped with Ethernet and Wi-Fi connections and USB ports for mobile devices.

**EXPEDITION EQUIPMENT:** Zodiac landing craft, kayaks, Remotely Operated Vehicle (ROV), hydrophone, splashcam, underwater video camera, crow’s nest remote controlled camera, video microscope, snorkeling gear.

**SPECIAL FEATURES:** A full-time doctor, undersea specialist, National Geographic photographer, Lindblad-National Geographic certified photo instructor and video chronicler, internet café and laundry.

**WELLNESS:** The vessel is staffed by a wellness specialist and features a glass-enclosed fitness center, outdoor stretching area, two LEXspa treatment rooms and sauna.

**CATEGORY A SOLO:** Main Deck with window #309-312, 329-334

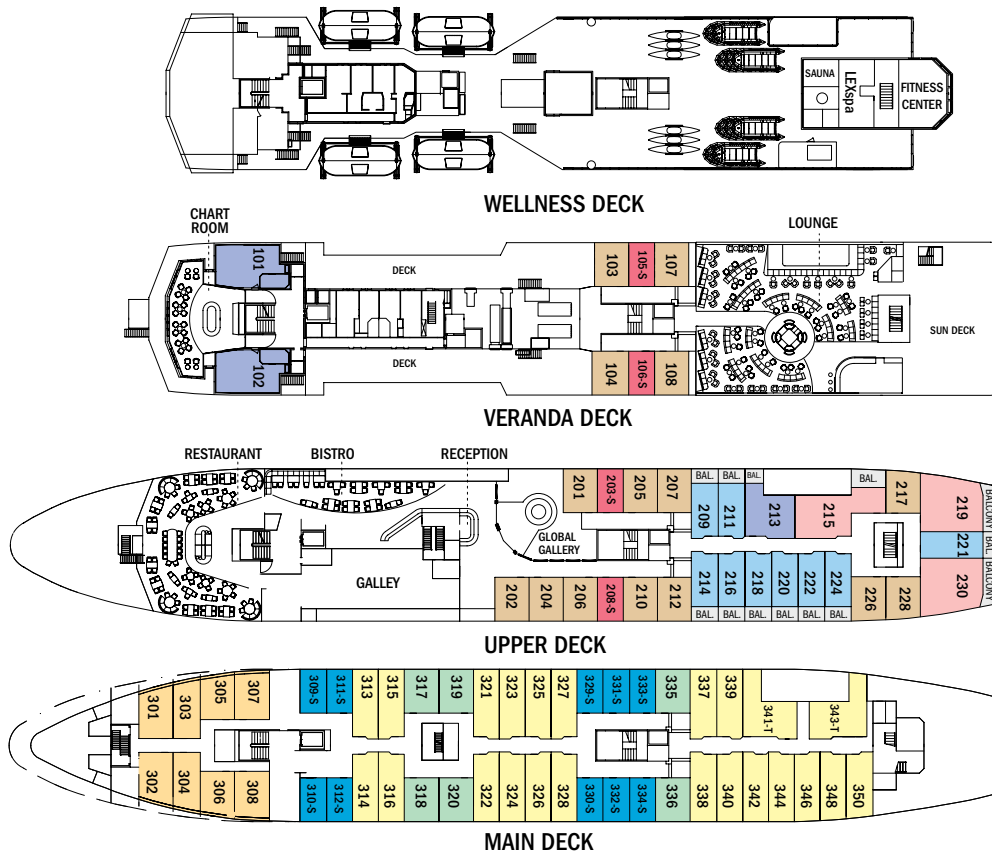
**CATEGORY B SOLO:** Upper and Veranda Decks with window #105-106, 203, 208

**CATEGORY 3 TRIPLE:** Main Deck with window #341, 343

**SHARED ACCOMMODATIONS:** Available in Categories 1 and 2.

**SOLE OCCUPANCY:** Cabins available in Categories A and B.

**NOTE:** Cabins #209, 211, 214, 216-218, 220, 222, 224, 226, 228, 303-306—These cabins have one queen-sized bed. All other double cabins have two lower single beds; some can convert to a queen-sized bed. Third person rates are available in the designated triple occupancy cabins at one-half the double occupancy rate. Cabins #341, 343, 101, 102, 215, 219 and 230 can accommodate a third person.



» TAKE A VIRTUAL VIDEO TOUR AT [WWW.EXPEDITIONS.COM/NGEXPLORER](http://WWW.EXPEDITIONS.COM/NGEXPLORER)

From top-right: Upper deck cabin with balcony, suite bathroom, chart room set for dinner aboard National Geographic Explorer.

**BAR TAB AND CREW TIPS INCLUDED ON VOYAGES LISTED BELOW. BOOK BY JUNE 1, 2017 TO RECEIVE THE PRICING BELOW FOR 2018.**

Prices are per person, double occupancy unless indicated as solo.

ITINERARY	YEAR	CAT. 1	CAT. 2	CAT. 3	CAT. 4	CAT. 5	CAT. 6	CAT. 7	CAT. A SOLO	CAT. B SOLO	ADVANCE PAYMENT	NOTE
Hot Springs and Icebergs: Iceland to West Greenland – Page 4	2017-18	\$6,990	\$7,590	\$7,870	\$8,540	\$10,090	\$12,110	\$13,950	\$9,490	\$9,840	\$750	Includes three hotel nights Reykjavik. Sample Airfares: Round trip Newark/Keflavik: Economy from \$600; Business from \$2,300; Round trip charter airfare: \$1,450 (Reykjavik/Kangerlussuaq)
Exploring Greenland and the Canadian High Arctic – Page 8	2017-18	\$13,990	\$14,990	\$15,600	\$16,750	\$20,200	\$23,290	\$27,000	\$18,740	\$19,500	\$1,500	Includes two hotel nights Reykjavik. Sample Airfares: Round trip Newark/Keflavik: Economy from \$600; Business from \$2,300; Round trip charter airfare: \$1,450 (Reykjavik/Kangerlussuaq). Call for 2018 details.
Epic 80°N: Greenland, Baffin and Ellesmere Islands – Page 10	2017-18	\$25,990	\$27,990	\$28,970	\$30,990	\$37,470	\$42,710	\$49,640	\$34,990	\$36,210	\$3,000	Includes two hotel nights Reykjavik. Sample Airfares: Round trip Newark/Keflavik: Economy from \$600; Business airfare from \$2,300; Round trip charter airfare: \$1,450 (Reykjavik/Kangerlussuaq).
Land of the Ice Bears – Page 12	2017-18	\$10,220	\$10,880	\$11,320	\$11,990	\$14,150	\$16,530	\$18,890	\$13,600	\$14,150	\$1,500	Includes two hotel nights. Sample Airfares: round-trip Newark/Oslo. Economy from: \$800; Business from \$3,590. Charter Airfare: \$725 (roundtrip Oslo/Longyearbyen)

# INCLUSIVE PRICING MEANS VALUE PLUS EXPERIENCES

## EARLY BOOKING SAVINGS—BOOK BY JUNE 1, 2017

2017 prices are guaranteed for all 2018 departures if booked by June 1, 2017. After June 1, 2017, call or visit [expeditions.com](http://expeditions.com) for new 2018 prices.

## FREE AIRFARE ON SELECT DEPARTURES

On voyages with complimentary air offers, airfare must be ticketed by Lindblad Expeditions. All offers are valid for new bookings only, subject to availability at the time of booking, and may not be combined with other offers, and pre/post extensions. Call for details.

## FREE BAR TAB AND CREW TIPS

Bar tab and tips for the crew are complimentary on all departures of *National Geographic Explorer* listed in this brochure. Call for details.

## NO CHARGE FOR IN-DEPTH ARCTIC EXPERTISE

The knowledgeable guidance and company of our expedition staff, our Global Perspectives guest speakers, plus all lectures and presentations, and our fully stocked onboard library, are open to all and included in the price.

## NO EXTRA CHARGES FOR ACTIVITIES

All the daily activities—from city explorations to Zodiac rides, kayaking, or hiking—are included in the price.

- ✓ Meals on land, as indicated in the itineraries
- ✓ Special access permits, park fees, port taxes
- ✓ Transfers to and from group flights
- ✓ Hotel accommodations where relevant, as indicated in the itineraries.
- ✓ Guided overviews pre- and/or post expedition as indicated in the itinerary

## YOURS FREE, THE BEST BOOK ON THE ARCTIC



Book any 2017 Arctic adventure, and receive a complimentary copy of *THE ARCTIC*, our beautifully designed new book by Sven Lindblad. Published by

Rizzoli, it features photos from many of the world's finest nature photographers. And to maximize your expedition anticipation, we'll ship your copy to you prior to departure.

## AND FREELY ENJOY THE FOLLOWING ABOARD SHIP:

- ✓ All meals—from breakfast, lunch & dinner in the dining room
- ✓ All beverages including unlimited cappuccinos, latte, coffee, tea & soda
- ✓ Plus beer, wine & cocktails
- ✓ Crew gratuities
- ✓ Hors d'oeuvres & snacks during lounge recap
- ✓ Tea time with pastries; all-day fruit, cookies
- ✓ Fitness Center with elliptical, treadmill, stationary bicycle, free weights, bands & more
- ✓ Traditional Swedish Sauna
- ✓ Daily stretching class with wellness specialist
- ✓ Mac computers for downloading your camera's memory card & Internet access
- ✓ Access to the ship's Bridge for optimal observation and to watch navigation
- ✓ Complimentary refillable water bottle



## LOG ON TO EXPEDITIONS.COM

Find everything you need to dream, research or plan travel to 40+ destinations worldwide.

**Be part of our expedition community—Join in! Here's how:**

- ▶ Check our daily blog: [expeditions.com/blog](http://expeditions.com/blog)
- ▶ Like us on Facebook: get inspired and chime in: [facebook.com/LindbladExpeditions](https://facebook.com/LindbladExpeditions)
- ▶ Subscribe to our videos on [youtube.com/lindbladexpeditions](https://youtube.com/lindbladexpeditions)
- ▶ Follow @LindbladEXP on Instagram and Twitter, and find Sven Lindblad on Instagram at @solindblad.





## RESERVATION INFORMATION

**Costs Include:** All accommodations aboard ships or in hotels per itinerary or similar, all meals and beverages aboard ship, meals on land as indicated, air transportation where indicated as included, shore excursions, sightseeing and entrance fees, special access permits, transfers to and from group flights, use of kayaks, tips, taxes and service charges, services of a ship physician on most voyages, and services of our expedition staff.

**Not Included:** Air transportation (except where shown as included), extensions, passport, visa, immigration fees, meals not indicated, travel protection plan, items of a personal nature, such as e-mail, voyage DVD, laundry and premium alcoholic beverages.

**Airfare:** For all programs, airfare is an additional cost unless otherwise indicated. Sample airfares are subject to change. We will gladly assist in making your air arrangements for a \$50 per person service fee.

### TERMS & CONDITIONS

**Reservations:** To reserve your place, an advance payment is required at the time of reservation. The per person advance payment amount varies by program, and is outlined on page 19, as well as on our website. Certain longer voyages may carry additional advance deposit requirements due to high demand for these voyages. Payment is accepted by Visa, MasterCard, American Express, Discover, or by check.

Receipt of your initial payment indicates your acceptance of our complete Terms and Conditions. We require written notice at the time of reservation for any physical condition, diet, or treatment requiring special attention.

Once your reservation is confirmed, we urge you to use your personalized online account for important information to help you prepare for your voyage. Managing your documents online will facilitate fast and accurate communication, and allow you to provide us with pertinent details we require, in order to complete your reservation. Your online account gives you access to your Expedition Guide, which includes valuable information specific to your voyage. You can also use your online account to make easy payments, view recommended flights and reading material, packing list, and more.

**Final Payment:** Final payment is due 120 days prior to departure. Payment schedules may vary for certain longer voyages, due to high demand for these voyages. We reserve the right to cancel your reservation if payment has not been received by final payment due date.

**Travel Protection Plan:** We strongly recommend that you take advantage of our Travel Protection Plan. This plan offers comprehensive coverage to protect you from cancellation fees, costs incurred due to trip delays/interruption, medical assistance, and damaged or lost baggage, and provides medical assistance and evacuation during your travels. Our Travel Protection Plan is available for U.S. and Canadian residents only, and may be purchased any time prior to final payment due date. Travel Protection premiums are non-refundable once plan is purchased.

**Smoking Policy:** Smoking is allowed only in designated outdoor areas.

**Responsibility and Other Terms & Conditions:** Certain other provisions concerning, among other things, limitations of Lindblad Expeditions' and the National Geographic Society's liability for loss of property, injury, illness or death during the voyage will be provided to all guests on the ship's ticket sent prior to departure, and are also available on our website at [www.expeditions.com/terms](http://www.expeditions.com/terms), or upon request. By registering for a trip, the guest agrees to all such terms and conditions.

**Note:** Itineraries and prices listed in this brochure are valid as of publication date, and are subject to change. Under normal conditions, the total expedition cost is guaranteed at the time of booking. However, the published price is determined far in advance of initial departure on the basis of then-existing projections of fuel and other costs. In the event we determine that current costs create an unsustainable financial model, including but not limited to increases in the price of fuel, currency fluctuations, increases in government taxes or levies, or increased security costs, we reserve the right to pass on these costs to you, to cover such unexpected increases. We will always provide a transparent accounting of the reason for such an increase in costs.

CANCELLATION POLICY	
Number of Days Prior to Expedition Start	Per Person Cancellation Fee
180 or more days	\$750*
179–120 days	Advance payment cost
119–90 days	25% of trip cost
89–60 days	50% of trip cost
59–0 days	No refund

\*\$750 will be rewarded in the form of a Lindblad Expeditions Travel Certificate.

This cancellation policy applies to expeditions as well as pre- or post- extensions, as well as all other additional services.


The effective date of a cancellation will be the date on which your cancellation notice is received. Note: Airline cancellation policies vary by carrier, as well as the type of fare used to issue your ticket.

Any revisions you make within the cancellation penalty period, such as departure date or choice of voyage, are subject to cancellation fees.


Cancellation policy for certain longer voyages and Holiday departures may vary due to high demand for these voyages. Our Group cancellation policies are listed in the Terms and Conditions section of our website, or you may call us for details. We stress the importance of purchasing a travel protection plan to protect yourself from fees in the event you need to cancel your reservation.

**United States Tour Operators Association**  
**\$1 Million Travelers Assistance Program**

Lindblad Expeditions, as an Active Member of USTOA, is required to post \$1 Million with USTOA to be used to reimburse, in accordance with the terms and conditions of the USTOA \$1 Million Travelers Assistance Program, the advance payments of Lindblad Expeditions customers in the unlikely event of Lindblad Expeditions bankruptcy, insolvency or cessation of business. Further, you should understand that the \$1 Million posted by Lindblad Expeditions may be sufficient to provide only a partial recovery of the advance payments received by Lindblad Expeditions. More details of the USTOA Travelers Assistance Program may be obtained by writing to USTOA at 345 Seventh Avenue, Suite 1801, New York, New York 10001, or by email to [information@ustoa.com](mailto:information@ustoa.com) or by visiting their website at [www.USTOA.com](http://www.USTOA.com).



We are proud to be a Founding Member of Adventure Collection—a family of the world's most trusted and experienced active travel companies. Each member company of Adventure Collection is dedicated to enriching the lives of its guests and to giving back to the areas in which it travels. For more information visit [www.AdventureCollection.com](http://www.AdventureCollection.com).



©2017 Lindblad Expeditions

Lindblad Expeditions and the Eye are the trademarks of Lindblad Expeditions. All rights reserved. NATIONAL GEOGRAPHIC and the Yellow Border are the trademarks of the National Geographic Society. All rights reserved.

Photo Credits: Sisse Brimberg & Cotton Coulson, Stewart Cohen, David Cothran, Adam Cropp, Eric Guth, Justin Hofman, Ralph Lee Hopkins, Sonia Jukam, Carl Erik Kilander, Sven-Olof Lindblad, Jeff Litton, Michael Luppino, Michael Melford, Michael S. Nolan, Marco Ricca, Stefan Rosengren/Alamy, Ian Strachan, Rikki Swenson, Suranga Weeratuna/Alamy.

**For Reservations:**  
**Contact your travel advisor or Lindblad Expeditions**  
**1.800.EXPEDITION (1.800.397.3348)**  
**Reservation Hours: Monday – Friday 9am – 8pm ET**  
**Saturday & Sunday 10am – 5pm ET**

**Lindblad Expeditions, Inc., 96 Morton Street, New York, NY 10014**  
**Phone: 212.261.9000 • Fax: 212.265.3770**

**email: [explore@expeditions.com](mailto:explore@expeditions.com) For additional information and online reservations, visit us on the Web: [www.expeditions.com](http://www.expeditions.com)**



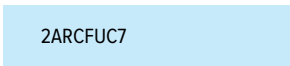
96 Morton Street  
New York, NY 10014

PRSR STD  
U.S. POSTAGE  
PAID  
LINDBLAD  
EXPEDITIONS

Account Number:



Expedition Code:



**1.800.EXPEDITION | WWW.EXPEDITIONS.COM**

♻️ Printed on 10% recycled content paper with soy-based inks. We recommend that you pass this along for others to enjoy or recycle.

ARC-047



**SPECIAL OFFERS INSIDE.** See page 20 for details.

## SELECTED HONORS & AWARDS

- » Condé Nast Traveler’s Readers’ Choice Award—Top Small Ship Cruise Lines, 2016, 2015, 2014
- » Virtuoso “Best VAST Partner” Award, 2016
- » Cruise Critic Editor’s Pick Awards “Best for Adventure,” 2016, 2013, 2012, 2011, 2010
- » 2016 World Tourism Award
- » Andrew Harper’s Reader Choice Awards: Best Cruise Lines, 2016
- » Town & Country Cruise Awards: Best for Families and Onboard Activities, Expedition Cruises, 2016
- » Porthole Cruise Magazine Readers’ Choice Awards: Best Expedition Cruise Line, 2015
- » Tourism Cares Travel Philanthropy Awards: Legacy in Travel Philanthropy, 2015
- » Condé Nast Traveler’s “Gold List,” 2013, 2009, 2008, 2007, 2006, 2005
- » Virtuoso “Sustainable Tourism Leadership-Supplier” Award, 2013
- » Travel + Leisure “World’s Best” Award for Small-Ship Cruise Lines, 2013, 2012, 2011, 2010, 2009, 2008
- » Travel + Leisure “World’s Best for Families” Award for Small-Ship Cruise Lines, 2012, 2011, 2010, 2009
- » Climate Champion Award to Sven Lindblad by Clean Air-Cool Planet, 2009

▶ **GO TO [WWW.EXPEDITIONS.COM/AWARDS](http://WWW.EXPEDITIONS.COM/AWARDS) FOR AN EXTENDED LIST.**

