



ARCTIC & ICELAND 2018

ABOARD NATIONAL GEOGRAPHIC EXPLORER | 2018



Lindblad
Expeditions



NATIONAL
GEOGRAPHIC™



Lindblad
Expeditions



NATIONAL
GEOGRAPHIC™

Lindblad Expeditions and National Geographic have joined forces to further inspire the world through expedition travel. Our collaboration in exploration, research, technology and conservation will provide extraordinary travel experiences and disseminate geographic knowledge around the globe.



DEAR EXPLORER,

In my opinion the most interesting places in the world from May through August are in the northern latitudes. The Arctic and the subarctic explode with summer life, shaking off the harshness of winter for a time of renewal. The birds, the bears, the flowers and the people are all in full bloom, so to speak, taking advantage of this brief, intense time of bounty.

Quite a few citizen explorers, apparently, are inclined to agree: the Arctic is on the radar of an ever-increasing number of savvy travelers with a variety, or a blend, of motives. Many want to see wild, unhabituated polar bears in their natural habitat: on the pack ice, hunting for seals. Still others are drawn for the spectacular Arctic landscapes as much as for the wildlife—to see glaciers, the ice cap, fjords, and geologic and geothermal wonders.

Our ship, *National Geographic Explorer* moves with the season, navigating her way from the south through Norway up to Svalbard, the Norwegian Arctic. Then, on to Iceland and Greenland. There is nothing random about this migration; it's purposeful and mindful of the elements and the myriad opportunities for discovery that come from being in the right place at the right time.

And discoveries are what you shall make. We have been in the expedition travel business for a long time; we're celebrating dual 50-year anniversaries in Antarctica and Galápagos, and have been exploring the Arctic and subarctic for nearly as long. We understand the region, what it takes to safely operate there, and equally important, what constitutes the richest, most engaging and rewarding travel experience for you. Our Arctic itineraries, refined over decades, are designed to deliver adventurous experiences that will exceed your expectations. And our Iceland, and Iceland and Greenland itineraries go beyond—to take you deeper into the wildness and cultures of both. In 2018, we can take you even further: our ambitious recon team has scouted and designed a most excellent heli-hiking adventure to extend your voyage, as you'll see on page 32.

So, for the wildlife enthusiast, the photographer, the lover of serenity and wild landscapes, even the anthropologist, in you, there is much to consider in the North. I hope we will have the pleasure of bringing you to this grand part of our world.

All the best,



Sven-Olof Lindblad



ELLSMERE ISLAND

80° NORTH

Qaanaaq

DEVON ISLAND

Baffin Bay

Lancaster Sound

Bylot Island

Pond Inlet

BAFFIN ISLAND

Qilakit

Ilulissat

Sisimiut

Kangerlussuaq

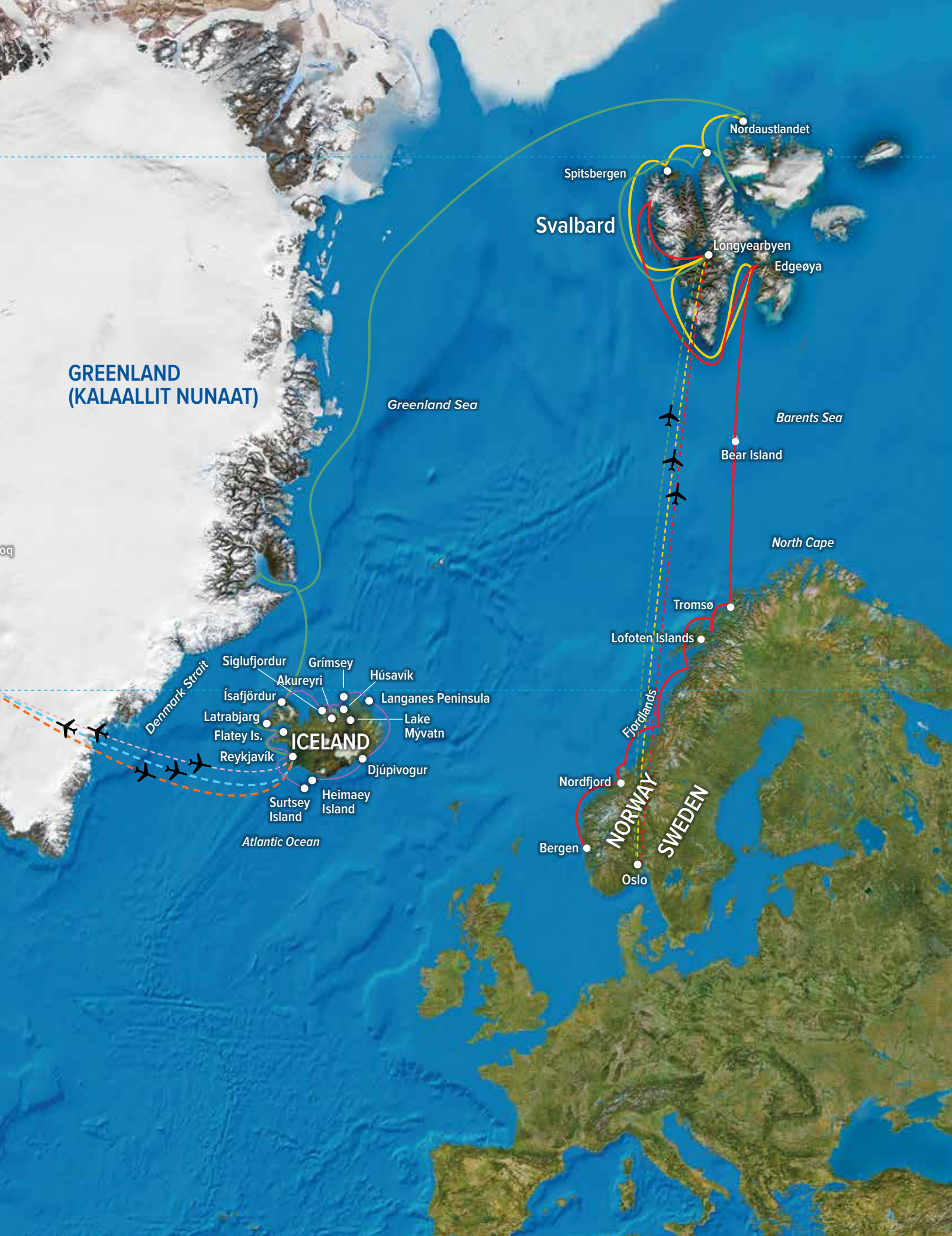
Davis Strait

Hudson Strait

CANADA

Newark

- LAND OF THE ICE BEARS: AN IN-DEPTH EXPLORATION OF ARCTIC SVALBARD-PAGE 14
- NORWAY'S FJORDS AND ARCTIC SVALBARD-PAGE 16
- SVALBARD, ICELAND & GREENLAND'S EAST COAST-PAGE 18
- EXPLORING GREENLAND AND THE CANADIAN HIGH ARCTIC-PAGE 22
- EPIC 80°N: EXPLORING GREENLAND, BAFFIN & ELLSMERE ISLANDS-PAGE 24
- A CIRCUMNAVIGATION OF ICELAND-PAGE 28
- HOT SPRINGS AND ICEBERGS: ICELAND TO WEST GREENLAND-PAGE 30



GREENLAND
(KALAALLIT NUNAAT)

Svalbard

Spitsbergen

Nordaustlandet

Longyearbyen

Edgeøya

Greenland Sea

Barents Sea

Bear Island

North Cape

Tromsø

Lofoten Islands

Siglufjörður
Akureyri
Grimsey
Húsavík
Ísafjörður
Langanes Peninsula
Lake Mývatn
Latrabjarg
Flatey Is.
Reykjavík
Djúpivogur

ICELAND

Surtsey Island
Heimaey Island

Atlantic Ocean

Denmark Strait

Fjordlands

Nordfjord

Bergen

Oslo

NORWAY

SWEDEN

UNLOCKING THE UNCHARTED FOR THREE DECADES

Like the bold adventurers who came before—the early Vikings, countless Northwest Passage seekers, and North Pole explorers—our connection and contribution to the Arctic runs deep. Not only have we been bringing citizen explorers up north since the 80s, but we have been instrumental in working to uncover the tantalizingly blank spots of this vast geography. When you go with us you go with the best and most knowledgeable expedition team in the region, exemplified by people like Captain Leif Skog, Lindblad VP of Marine Operations and Master of *National Geographic Explorer* since 2008. He has been creating detailed mud maps of the sea floor for more than 35 years, using sonar to identify safe, new passageways throughout the Arctic. This pioneering work eventually led Captain Skog, along with longtime Lindblad expedition leader and naturalist Bud Lehnhausen, to help co-found AECO (Assn. of Arctic Expedition Cruise Operators), a governing body which sets the standards for responsible,



Captain Leif Skog.



Bud Lehnhausen.

environmentally friendly and, above all, safe travel in Arctic waters. There is still much to be mapped—from the east coast of Svalbard up into the ice-choked waters of the Canadian High Arctic and beyond—and today twenty vessels now crowdsource this critical work, adding their ‘soundings’ to a growing collection. Our expert teams keep us on the forefront of polar exploration, creating unequalled opportunities for you to venture safely into the Arctic’s wildest reaches.





WELCOME TO THE BRIDGE

The teamwork between our expedition leaders and captains plays a vital role in the flexibility and spontaneity that is a hallmark of our expeditions. Our captains are nearly as keenly interested in spotting wildlife and stopping for observations as our naturalists. And our captains and officers take great pleasure in our guests' fascination with their navigation work, and welcome you to the Bridge most any time to observe the calm, steady business of guiding the ship through the ice.





Zodiac cruise through basalt rock formations, Greenland.



Clockwise from above: Guests prepare to embark on kayaks at Spitsbergen Island. An undersea specialist deploys an ROV from a Zodiac. These marine experts who accompany each voyage on the National Geographic Explorer also go on regular dives, taking video footage of their discoveries that you can watch in vivid HD from the comfort of the ship.



PERFECT PLATFORM FOR EXPLORATION

National Geographic Explorer is a genuine expedition ship, not a cruise ship masquerading as one. Therefore, it's uniquely equipped to facilitate our brand of keen seeing and experiencing—with state-of-the-art tools for exploration. An unparalleled base for discovery, *Explorer* enables the fullest expression of our expedition style: an intimate, authentic, learning-oriented environment.

COOL TOOLS ABOARD *NATIONAL GEOGRAPHIC EXPLORER*

✓ **Remotely Operated Vehicle (ROV)** that can explore down to 1,000 feet to reveal the fascinating depths of the polar ocean

✓ **Remote-controlled crow's nest camera** with real-time footage broadcast on high definition LCD video screens in each cabin

✓ **Electronic chart system** broadcasting as a channel in the cabins

✓ **Professional video chronicler** who captures every facet of your unique adventure, creating an edited DVD that will be available for purchase

✓ **Chart room** with nautical maps and a coffee, tea, and hot cocoa station

✓ **Open invitation to visit the ship's bridge** and observe navigation firsthand

✓ **Observation lounge** that provides panoramic vistas

✓ **Large fleet of MK-5 Zodiacs**, the finest expedition landing craft in the world

✓ **Fleet of 36 double kayaks** and a specially designed kayak launch platform that enables easy kayak deployment



TAKING EXPLORATION TO NEW HEIGHTS

Beginning 2018 we're launching a new extension into Iceland's interior featuring heli-hiking, lava caves, and ice tunnels (pg. 32). Thanks to the top-notch reconnaissance work of expedition leader Alizé Carrère and naturalist/native Icelander Dagný Ívarsdóttir, the itinerary we have crafted will be nothing short of exhilarating. They scouted out locations and activities starting with our base camp, Hotel Husafell, a luxurious countryside retreat located two hours from Reykjavík. As they discovered, it



beckons "intrepid travelers who also appreciate a first-rate dinner of fresh lamb and fine wine overlooking snow-capped peaks!" They have ensured the adventures you'll enjoy in the surrounding area will be extraordinary—from descending into Iceland's largest lava tube to donning crampons and exploring the ethereal blue interior of a glacier. And the highlight: helicopter rides up to two different glaciers—to hike in otherworldly surroundings. Deploying recon teams enables us to create brand new experiences, and add elements of surprise and delight to our tried-and-true itineraries.

Clockwise from top left: Alizé Carrère stops for a spectacular photo op on top of Langjökull glacier, Iceland's second largest glacier; we've teamed up with Nordurflug Tours, Iceland's premier helicopter company—you'll be picked up directly outside your hotel before taking off for an incomparable day of heli-hiking around southwestern Iceland; prepare for epic aerial views like this ethereal braided river; explore ice caves down inside a glacier.

MEET THE NORTH, ONE INTRODUCTION AT A TIME



We are the only expedition company to sponsor a Field Correspondent—writer and radio producer Jenny Kingsley—and her project, Meet The North, which aims to explore life in the Arctic, and tell personal stories of modern culture at the top of the world. Through this sponsorship we are able to create fascinating, people-to-people connections that deeply enhance our itineraries, giving you richer insight into this bellwether region.

One such opportunity has added new dimension to our *Hot Springs & Icebergs* itinerary (pg. 30). Travel on this voyage and you'll meet students of the remarkable *Kalaallisuuliornermik Ilinniarfik* (the School of National Clothing Education) which teaches the craft of Greenlandic traditional clothing for men and women. Just added last year it returns for our 2018 season—the students are eager to come back on board to share their work and demonstrate traditional techniques such as how to prepare sealskin.

» [LEARN MORE ABOUT LINDBLAD'S UNIQUE SPONSORSHIP AT MEETTHENORTH.ORG](http://MEETTHENORTH.ORG)



Top left: Jenny Kingsley. Bottom left and above: Students displaying their work and preparing skins by hand—a technique in danger of being lost until a few Greenlanders committed to making the traditions strong again.





A PANOPLY OF WILDLIFE, ABOVE & BELOW THE ICE

Arctic wildlife is as vast and diverse as the region itself. Come for the polar bears but prepare to check so much more off your must-see life list. When you visit during the brief explosions of spring and summer as we do, you'll witness an ecstatic celebration of Arctic life in all its fascinating forms. Massive marine mammals, a glory of birdlife, intriguing land creatures—all exquisitely adapted to inhabiting this icy wilderness. Our itineraries cover a wide array of this far-reaching geography, each one offering unique wildlife sighting opportunities like these:

- ✓ Discover massive populations of seabirds: thick-billed guillemots, black-legged kittiwakes, Atlantic puffins, little auks, Arctic terns, tiny snow buntings plus many more
- ✓ Spot Atlantic walrus hauled-out among breathtaking blue icebergs
- ✓ Keep watch for whales—humpback, bowhead, beluga, fin, blue and the elusive narwhal
- ✓ Spot curious bearded, harp and ringed seals gliding through the water and lying on sea ice
- ✓ Walk on Arctic tundra and see Svalbard reindeer, arctic fox, and musk oxen all grazing or hunting



HEAD TO THE PLANET'S POLAR BEAR HQ

The Norwegian archipelago of Svalbard, with its deep fjords, snowy mountains and vast tidewater glaciers, is one of the best places on Earth to see polar bears—wild, majestic and charismatic creatures with expressive eyes, massive bodies and improbably graceful movements among ice sheets and floes.



Spotting a polar bear in the wild, a life-list item for many, is a chance for guests of all ages to experience, on a visceral level, the magnitude and singularity of the Arctic. To see frolicking cubs, or an adult stalking a seal or eyeing our ship with its trademark curiosity, makes an

indelible impression, and provides an emotional context to the real fact that Arctic sea ice, the polar bear's vital habitat, is diminishing at an alarming rate. Over our three decades of Arctic exploration, we have learned an enormous amount about where to best find polar bears (as well as walruses, seals, reindeer and arctic foxes). Our ace spotters know how to approach the animals for optimum sightings, while maintaining both their comfort and our guests' safety. On [Land of the Ice Bears](#) go deep into their frozen territory and see for yourself.

Our [Norway's Fjords and Arctic Svalbard](#) itinerary adds the green fjord-carved coast to the ice for the perfect balance between the charmingly scenic and the spectacularly wild. Or if you're eager to venture beyond to explore three quintessential Arctic locations opt for [Svalbard, Iceland & Greenland's East Coast](#). Prepare to see iconic wildlife, along with stunning geography, and a bit of enduring Arctic culture. Hike, kayak and Zodiac cruise along Iceland's dramatic west coast. And travel confidently along the ice shelf of Greenland's epic east coast aboard *National Geographic Explorer*, the ultimate ice ship. We'll follow in the wake of 10th-century Viking explorers, as we watch for creatures of the ice, including gyrfalcons and some other 60 species of birds. All three itineraries provide unparalleled experiences of the authentic Arctic.





*This page: A curious polar bear approaches our ship.
Inset: Mother with cubs out on the ice.*

LAND OF THE ICE BEARS: AN IN-DEPTH EXPLORATION OF ARCTIC SVALBARD

11 DAYS/9 NIGHTS—ABOARD NATIONAL GEOGRAPHIC EXPLORER

PRICES FROM: \$10,430 to \$19,520 (See page 43 for complete prices.)

A High Arctic archipelago situated between Norway and the North Pole, Svalbard is a place of deep fjords, snowcapped mountains, massive sheets of ice, and magnificent polar bears. Travel under the midnight sun aboard *National Geographic Explorer*, and experience nature in its purest form.

EXPEDITION HIGHLIGHTS

- ▶ Search for the very symbol of the Arctic—polar bears—and observe these majestic creatures in their natural habitat, on the sea ice.
- ▶ Take naturalist-led walks, and cruise among beautiful icebergs in a Zodiac or a kayak.
- ▶ Experience the legendary midnight sun: the ethereal light of the northern summer, when the sun never sets.
- ▶ Watch for walruses, bearded and ringed seals, arctic foxes, and reindeer.

GLOBAL PERSPECTIVES GUEST SPEAKER

DR. IAN STIRLING

A Research Scientist Emeritus with Environment Canada and an Adjunct Professor in the Department of Biological Sciences at University of Alberta, Edmonton, he has done research on polar bears and polar seals for 50 years. He has won several awards including the Norris Award for Lifetime Achievement from the Society for Marine Mammalogy, and is the author of five books on bears and their ecology. He is aboard May 30, 2018.

Visit our website to read staff and guest speaker bios for this expedition.



A mother polar bear with her two cubs.

DAYS 1 AND 2: U.S./OSLO, NORWAY
Depart on an overnight flight to Oslo. Upon arrival, check into your hotel and then explore this charming city. Stroll among the famed Vigeland sculptures—hundreds of life-size human figures set in terraced parkland. Visit the Fram Museum, dedicated to the wooden ship sailed by Norwegian explorers Nansen and Amundsen. (Day 2: B)

DAY 3: OSLO/LONGYEARBYEN/ EMBARK
Depart Oslo on a charter flight, and enjoy breathtaking vistas en route to Longyearbyen. On arrival, we will visit the Museum and Art Gallery and then embark *National Geographic Explorer*, your base for the next six days. (B,L,D)

DAYS 4–9: EXPLORING SVALBARD
This voyage is undertaken in the spirit of discovery, and our travel in the archipelago is exploratory by design. In a region ruled not by humans but by polar bears, we let nature guide our course. Svalbard lies north of the Arctic Circle, where the summer midnight sun never sets. With our fully stabilized ice-class expedition ship, we are able to probe the ice in search of wildlife; our exact day-to-day itinerary remains flexible, depending on local ice and weather conditions. Zodiacs and kayaks take us closer to experience the region's geologic features and the wildlife that flourishes during the summer months. With our National Geographic photographer and a seasoned naturalist staff, venture to the foot of vast tidewater glaciers, kayak among sparkling icebergs, and explore fjords that split the coastline. Hike through miniature gardens blooming on the tundra;

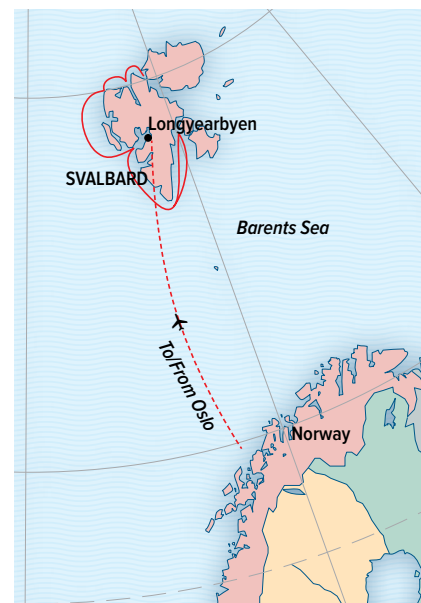
search the edge of the pack ice for polar bears, walrus and seals; and spot reindeer and arctic foxes on land. Svalbard is one of the best places on the planet to observe majestic polar bears in their natural habitat. (B,L,D)



A reindeer lopes along the tundra.

DAY 10: LONGYEARBYEN/DISEMBARK/ OSLO
Disembark in Longyearbyen, the largest settlement in Svalbard and one of the northernmost human settlements on Earth. Meet up with a local guide and take a short bus ride to Camp Barentz in the nearby Advent Valley for a taste of Arctic culture. Here, you'll discover a unique collection of buildings including an authentic *gamme*, a traditional round building with an open fire in the center, and a *lavvo*, the traditional tent of the Sami people. Enjoy refreshments and an expert presentation on the polar bear before meeting some of the friendly, sled dog huskies that reside at camp. Return to Longyearbyen, then fly back to Oslo and overnight at the SAS Radisson Blue Airport Hotel. (B,L)

DAY 11: OSLO/U.S. (B)



EXPEDITION DETAILS

DATES: 2018 May 16, 23, 30

OPTIONAL EXTENSIONS

Add a five-day pre-voyage extension to [Norway's Fjords](#), or a four-day post-voyage extension to [Iceland's Natural Wonders](#). See page 33 or our website for details.

NATIONAL GEOGRAPHIC PHOTOGRAPHER

Join [Erika Larsen](#) on May 23 and 30. [Learn more at **expeditions.com/photo**](#)



Scenic Svalbard.

NORWAY'S FJORDS AND ARCTIC SVALBARD

17 DAYS/15 NIGHTS—ABOARD *NATIONAL GEOGRAPHIC EXPLORER*
PRICES FROM: \$16,990 to \$31,820 (See page 43 for complete pricing.)

Meander along Norway's glacially carved coast, from the Hanseatic town of Bergen, north of the North Cape to the ice and wildlife of the Svalbard Archipelago, only 600 miles from the North Pole. Visit tiny fishing hamlets, kayak narrow inlets between towering peaks, and hike wildflower-strewn islands. Then search for the polar bears of Svalbard and other Arctic wildlife.

EXPEDITION HIGHLIGHTS

- ▶ Visit remote islets and experience island communities along this stunning glacially-carved coast.
- ▶ Explore the High Arctic of Svalbard, and watch for polar bears, walrus, reindeer, whales and rich birdlife.
- ▶ Actively explore: hike, walk, Zodiac-cruise and kayak amid stunning fjord scenery and soaring icebergs.

GLOBAL PERSPECTIVES GUEST SPEAKERS

Our Global Perspectives guest speaker program aboard *National Geographic Explorer* pairs engaging and renowned experts with our expedition team's expertise to further enrich your experience.



Lofoten, Norway.

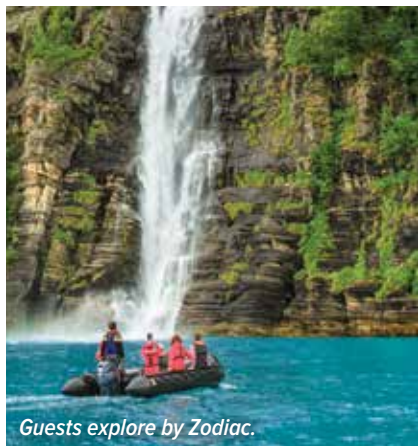


DAYS 1 AND 2: U.S./BERGEN, NORWAY/EMBARK

Fly overnight to Bergen and, following lunch, have a walking or panoramic tour of the city. Board our ship and set sail in the late afternoon. (Day 2: D)

DAY 3: NORDFJORD

Today we enter the “gateway to the glaciers,” Nordfjord where we explore the Loen Valley’s jagged mountains and turquoise-colored lake. (B,L,D)



Guests explore by Zodiac.

DAYS 4 AND 5: EXPLORING THE FJORDS OF NORWAY

Amid the rugged, mountainous islands and steep-walled fjords we explore a variety of landings: Zodiac along vertical rock faces, paddle a kayak in a deep fjord surrounded by cascading waterfalls, or hike with our naturalists. Over the years, we’ve discovered special places, including Melfjord, a narrow channel surrounded by high granite cliffs. (B,L,D)

DAY 6: LOFOTEN ISLANDS

The Lofoten Archipelago is an enchanting area of picturesque villages by the sea, backed with jagged peaks. By Zodiac, view Atlantic puffins, razorbills and guillemots. Go ashore at the island of Værøy, and be on deck as we cruise into dramatic Trollfjord, one of Norway’s most famous fjords. (B,L,D)

DAY 7: TYSFJORDEN

Enter the long Tysfjorden, where only a few small villages cling to rocky shores. Explore the U-shaped valley of Hellemobotn by Zodiac, kayak or on foot. (B,L,D)

DAY 8: TROMSØ

Tromsø is known as the “gateway to the

Arctic” because so many Arctic expeditions originated here. Visit the Polar Museum and the Arctic Cathedral, where the unique architecture evokes icebergs. (B,L,D)

DAY 9: EXPLORING NORTHERN NORWAY

A day of exploration for hiking, kayaking or using Zodiacs amid stunning scenery. (B,L,D)

DAY 10: BEAR ISLAND

Zodiac around mist-shrouded Bear Island, populated by thousands of fulmars, kittiwakes, guillemots and gulls. (B,L,D)

DAYS 11-15: EXPLORING SVALBARD

Arctic Svalbard is a place of deep fjords, snow-capped mountains, and massive ice sheets. Our focus is the search for walruses, seals, reindeer, arctic foxes and polar bears. Svalbard is one of the best places on the planet to observe majestic polar bears in their natural habitat. With our stabilized, ice-class ship, a flexible itinerary, and years of experience here, we are able to venture to the foot of vast tidewater glaciers, kayak among sparkling icebergs, hike the tundra, and explore fjords that split the coastline. (B,L,D)

DAY 16: LONGYEARBYEN/ DISEMBARK/OSLO

Disembark in Longyearbyen and visit the Svalbard Art Gallery and Museum before boarding our charter flight to Oslo. Check-in to the SAS Radisson Blu Airport Hotel. (B,L)

DAY 17: OSLO/U.S. (B)



Polar bear.



EXPEDITION DETAILS

DATE: 2018 May 3

NATIONAL GEOGRAPHIC PHOTOGRAPHER

Join Dan Westergren on May 3. [Learn more at expeditions.com/photo](http://www.expeditions.com/photo)



OPTIONAL EXTENSION

Add a four-day post-voyage extension to [Iceland’s Natural Wonders](#). See page 33.



Blue Lagoon.

SVALBARD, ICELAND & GREENLAND'S EAST COAST

17 DAYS/15 NIGHTS—ABOARD NATIONAL GEOGRAPHIC EXPLORER
PRICES FROM: \$15,650 to \$28,750 (See page 43 for complete prices.)

Explore three iconic and stunningly beautiful Arctic regions: the Svalbard Archipelago of Norway, and the island nations of Iceland and Greenland. Go aboard the world's ultimate expedition ship, and rely on the planet's best ice team as you probe the ice edge to search for wildlife, including polar bears and walrus and explore the Arctic tundra to find reindeer and Arctic foxes. This is an authentic expedition aboard *National Geographic Explorer*, a ship perfectly suited to the ever-changing ice. Like the brave sailors of the golden age of exploration who set out with no set itinerary—seeking adventure, knowledge, and the unknown—we are completely dependent on ice, wildlife, and weather conditions, allowing nature to guide us to her wonderful surprises.

EXPEDITION HIGHLIGHTS

- ▶ Explore Arctic Svalbard, one of the best places on the planet to observe majestic polar bears in their natural habitat, on the sea ice.
- ▶ Navigate the Arctic wilderness of the Greenland Sea to Iceland's wild western coast, with expert naturalists and a fully equipped expedition ship—making multiple stops en route completely dependent on ice, wildlife, and weather conditions.
- ▶ Watch for huge walrus, whales, and reindeer, and spot rich birdlife.
- ▶ Glide between icebergs, exploring via ship, Zodiac, and kayak.

GLOBAL PERSPECTIVES GUEST SPEAKER

Dr. Robert Bindschadler

Dr. Bindschadler's career spanned more than 30 years at NASA where he retired in 2010 as the Chief Scientist of NASA's Hydrospheric and Biospheric Sciences Laboratory and a Senior Fellow of the Goddard Space Flight Center. He is aboard in 2018.



Visit our website to read staff and guest speaker bios for this expedition.

Guests Zodiac among the big ice of Scoresbysund.



DAYS 1 AND 2: U.S./OSLO, NORWAY

Fly overnight to Oslo. On arrival, check into your hotel and explore this charming city. Stroll amid Oslo's famed Vigeland sculptures—hundreds of life-size human figures set in the parkland. Visit the Fram Museum, dedicated to the wooden ship sailed by Norwegian polar explorers Nansen and Amundsen.

DAY 3: OSLO/LONGYEARBYEN/ EMBARK

Depart Oslo on a charter flight, and enjoy breathtaking vistas en route to Longyearbyen. On arrival, we will visit the Museum and Art Gallery and then embark *National Geographic Explorer*. (B,L,D)

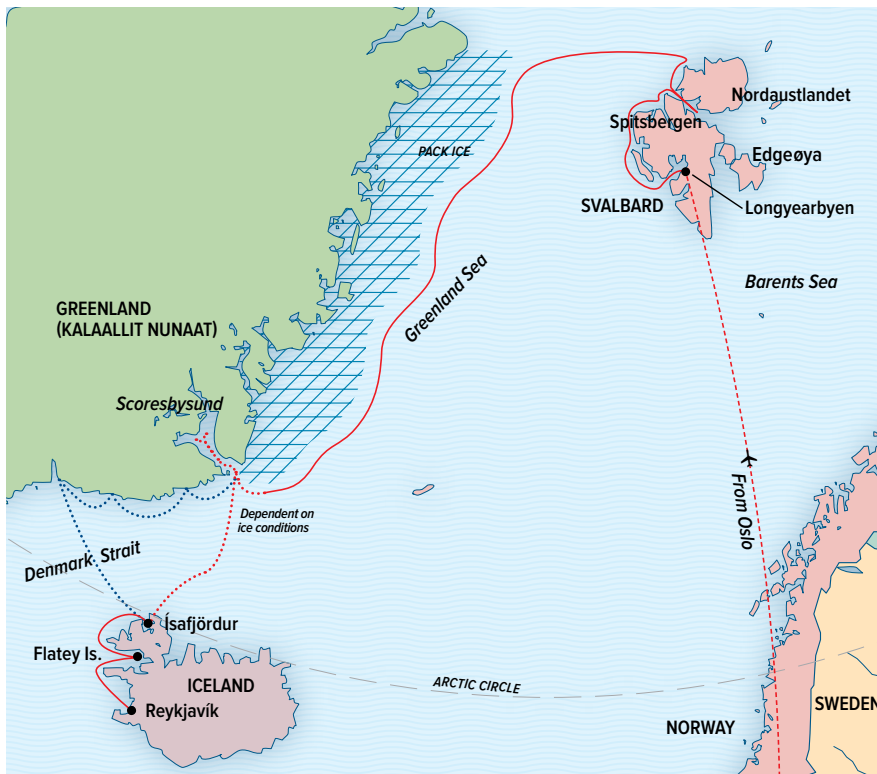
DAYS 4-16: EXPLORING SVALBARD, GREENLAND & ICELAND

Our itinerary, in keeping with the nature of an expedition, will be a thoughtfully considered framework based on our experience in this dynamic Arctic region. We'll take advantage of our 'human resources'—our experienced captain, expedition leader and naturalists—as well as our technological resources. Armed with the latest satellite imagery, we'll chart where the ice is impenetrable, and where there are leads guiding us to exciting discoveries. We have an ice-strengthened hull and forward-searching sonar, plus agile Zodiacs and kayaks, allowing us to make forays among the ice.



Polar bear and cub.

The undersea specialist will deploy the ROV, bringing back imagery few, if any, have ever seen. And with unforgettable days in the ice, and two professional photographers on board, you'll get your best photos ever. Svalbard is a place of deep fjords, snowcapped mountains, massive ice sheets, and one of the best



places on the planet to observe majestic polar bears in their natural habitat. Venture to the foot of vast tidewater glaciers, kayak among sparkling icebergs, hike the tundra, and explore fjords that split the coastline.

Svalbard's wonders are a prelude to discoveries on unknown shores, following the ice's edge. Our quest is to discover the Arctic's grand wilderness. Be on deck as our captain navigates between icebergs that drift from the calving glaciers. And if the ice yields, we'll aim for Scoresbysund, on the east coast of Greenland, awakening from winter's icy grip. If the ice is unrelenting, we'll explore a bit further south, where there are spectacular fjords generally ice-free at this time of year. And if the ice is completely unrelenting, we will head to Iceland.

Our journey ends on the west coast of Iceland: Ísafjörður, a picture postcard of Icelandic life; the immense Látrabjarg cliffs, home to a huge population of razorbills; and Flatey Island, a former trading post. (B,L,D daily)

DAY 17: REYKJAVÍK/DISEMBARK/U.S.

We'll see Iceland's capital, Reykjavik, for a guided overview of the old town, visit the famous Blue Lagoon thermal baths, and have lunch prior to our flight home. (B,L)

EXPEDITION DETAILS

DATE: 2018 Jun. 13

SPECIAL OFFER:

Book now to receive complimentary charter airfare (one-way Oslo/ Longyearbyen).

OPTIONAL EXTENSIONS

Take a five-day pre-voyage extension to the **Norwegian Fjords**, a four-day post-voyage extension to **Iceland**, a one-day post-voyage extension to **Reykjavik's Golden Circle & Blue Lagoon**, or a new three-day post-voyage extension **Glacier Heli-Hiking in Iceland**. See pages 32-33 or our website for details.

NATIONAL GEOGRAPHIC PHOTOGRAPHER

Travel with **Dan Westergren** on the June 13 departure. [Learn more at expeditions.com/photo](http://expeditions.com/photo)



Walrus close-up.





HIGH IN THE ARCTIC, HIGH ON THE THRILL OF EXPLORING THE ICE



For a fascinating holistic view of this vital region we head far north into mythic meridians where extraordinary wildlife, local encounters, glaciology, epic geology, and more all factor into each day's discoveries. Here, furry, finned, and feathered

Arctic denizens co-exist alongside human communities who for generations have thrived in the extreme conditions. Not only will we meet them but we'll delve deep into the culture, history, and customs that connect them to this land. And given that much of this geography is yet to be mapped there's also rare opportunity to roam into uncharted territory as we search for new passageways and landings.

On our *Exploring Greenland & the Canadian High Arctic* expedition, we'll venture deep into the land where polar bears roam, walrus loll, and the Inuit maintain their traditional lifestyles—to navigate the mouth of the fabled Northwest Passage. On *Epic 80°N* we'll go beyond—to trace the gorgeous coast of Ellesmere Island, heading as far north as the ice allows. This is expedition adventure at its finest, filled with spontaneity and flexibility—watching wind, wave, ice and weather, and “braking” for all the marvels that occur along the way.



Clockwise from left: Zodiac cruising near big ice near Nunavut; over four million people live in the Arctic, meet some and learn their stories; our best chances for spotting the elusive narwhal are here in the High Arctic.

EXPLORING GREENLAND AND THE CANADIAN HIGH ARCTIC

14 DAYS/13 NIGHTS—ABOARD NATIONAL GEOGRAPHIC EXPLORER

PRICES FROM: \$13,990 to \$27,000 (See page 43 for complete prices.)

Venture deep into the far reaches of the Arctic, a land where polar bears roam, whales congregate, and hardy Inuit communities maintain their traditional way of life. Aboard *National Geographic Explorer*, trace the rugged fjords of Greenland and navigate the mouth of Canada's legendary Northwest Passage. Spot polar bears on the pack ice, watch for a wide variety of whales—from minke and fin whales to the rare narwhal. Get up close to massive glaciers, and hike the wild islands that dot Canada's northern shores.

EXPEDITION HIGHLIGHTS

- ▶ Glide between soaring icebergs at the mouth of the Ilulissat Icefjord, a UNESCO site.
- ▶ Discover the incredible wildlife and landscapes of the Canadian High Arctic.
- ▶ Observe polar bears, whales, ringed seals and, with much luck, narwhal in their natural habitat.

An inquisitive polar bear.

GLOBAL PERSPECTIVES GUEST SPEAKERS

Our Global Perspectives guest speaker program aboard *National Geographic Explorer* pairs engaging and renowned experts with our expedition team's expertise to further enrich your experience.



DAY 1: NEWARK/KANGERLUSSUAQ, GREENLAND/EMBARK

Fly direct from Newark airport to Kangerlussuaq on a charter flight and embark *National Geographic Explorer*. (B,L,D)

DAY 2: SISIMIUT, GREENLAND'S WEST COAST

Cruise down the length of Kangerlussuaq Fjord en route to Sisimiut. Dozens of deep fjords carve into Greenland's west coast, many with glaciers fed by the ice cap that covers 80% of the country. At Sisimiut, a former whaling port, visit the museum and wander amid a jumble of wooden 18th-century buildings. There are several walking options to explore in and around town. (B,L,D)



Bethel church in Sisimiut.

DAY 3: DISKO BAY & ILULISSAT

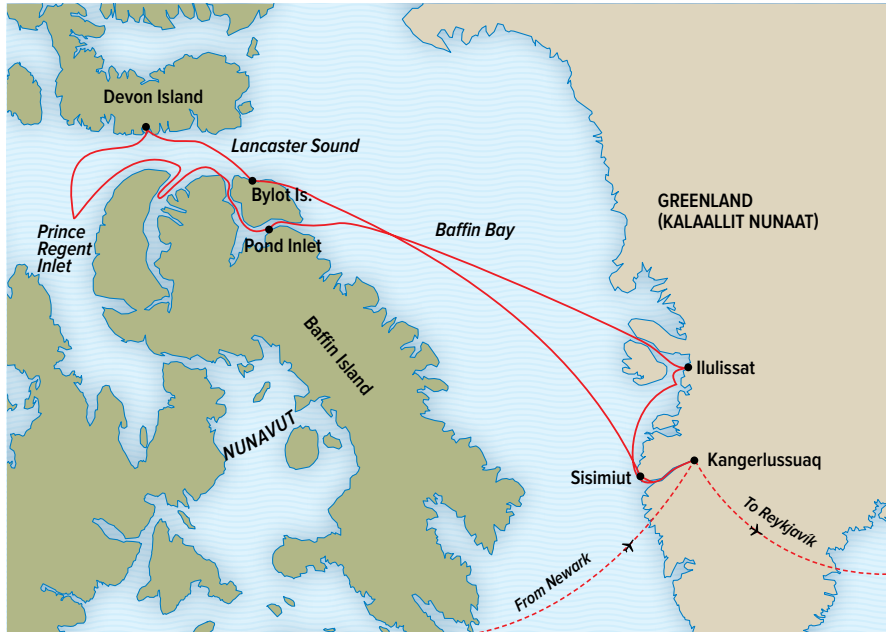
Sail into Disko Bay and set out to explore a tongue of the Greenland ice cap. Take an extraordinary cruise among the towering icebergs of the UNESCO World Heritage-designated Ilulissat Icefjord. Visit the town of Ilulissat and take a hike to the archaeological site at Sermermuit Valley. (B,L,D)

DAY 4: AT SEA IN BAFFIN BAY

A relaxing day at sea allows for time to hear talks from our staff about the wildlife and geology of the region. Go up to the bridge to watch for whales. Head up to the library. Enjoy the sauna or have a rigorous workout in the fitness center, with its "million dollar views." Or simply relax in the Observation Lounge. (B,L,D)

DAYS 5-9: EXPLORING THE CANADIAN HIGH ARCTIC

We begin our exploration of the Canadian High Arctic with a visit to the small Inuit community of Pond Inlet, Nunavut. We will explore some of the beautiful bays and inlets along Baffin Island's northern coast and Lancaster Sound. Carved by Ice Age glaciers, Lancaster Sound is



the eastern gateway to the Arctic Archipelago. European explorers like William Baffin first ventured here in the 15th century to search for the Northwest Passage. The sound has been a favorite Inuit hunting and fishing location for hundreds of years. Our days here will be spent searching for ringed seals, arctic foxes, walrus, and polar bears, as well as beluga whales and narwhal. Visit Devon Island and walk with our ship's archaeologist to learn about the Thule people that once inhabited this region and were the ancestors of all modern Inuit. Go ashore on rocky Philpots Island for a chance to hike on the tundra and search for interesting flora and fauna, including extensive moss beds with interspersed flowering vascular plants, various bird species, Arctic hares, and perhaps even musk oxen. (B,L,D)

DAYS 10 & 11: AT SEA IN BAFFIN BAY/ GREENLAND'S WEST COAST

We make our way back across Baffin Bay towards the coast of West Greenland. A relaxing day at sea allows for time to hear talks from our staff about the fascinating history of polar exploration and to look for wildlife from the Bridge. Our final day exploring will be spent in Greenland's beautiful, scenic fjords. Take a Zodiac cruise or kayak some of the picturesque waterways. Our undersea specialist may launch the ROV to see the marine life inhabiting the fjord floor. (B,L,D)

DAYS 12-14: KANGERLUSSUAQ/ DISEMBARK/REYKJAVÍK/KEFLAVÍK/U.S.

Disembark in Kangerlussuaq and take a charter flight to Reykjavik where we will stay two nights at our fine hotel. The next day features either a full-day tour of the Golden Circle or choose a walking or city-by-bike tour of Reykjavik. Our final day in Reykjavik you have your choice of options: a soak in the Blue Lagoon; a tour of the Reykjanes Peninsula; or a visit to the hot springs, geothermal power plant and horse farm. After lunch, transfer to the airport in Keflavik for flights home. (Days 12-13: B,L,D; Day 14: B,L)

EXPEDITION DETAILS

DATE: 2018 Aug. 8

NATIONAL GEOGRAPHIC PHOTOGRAPHER

Join National Geographic photographer **Phil Schermeister** in 2018. [Learn more at expeditions.com/photo](http://www.nationalgeographic.com/photo)



De Dødes Fjord.

EPIC 80°N: EXPLORING GREENLAND, BAFFIN & ELLESMERE ISLANDS

24 DAYS/22 NIGHTS—ABOARD *NATIONAL GEOGRAPHIC EXPLORER*

PRICES FROM: \$25,990 to \$49,640 (See page 43 for complete prices.)

Adventure and the unexpected star on this epic voyage to vast and wild shores. Our recent extraordinary experiences aboard *Explorer* at remote Ellesmere Island made us excited to return. We'll explore familiar and new parts of Baffin Island and Lancaster Sound, then make our way up the beautiful coast of Ellesmere Island, which reaches farther north than any other land, except for Greenland. Here, we allow time to go as far north as the ice permits—a bold exploration of this area very few ships even attempt. We then trace the rarely explored coast of northwest Greenland, going places we've never been—where tidewater glaciers of extreme beauty dominate.

EXPEDITION HIGHLIGHTS

- ▶ Experience unbridled 21st-century exploration, as we venture deep into the far reaches of the ice to Zodiac cruise, kayak, and hike the tundra.
- ▶ Encounter hardy Inuit communities, and learn the legacy of the ancient Thule and Dorset at remote archaeological sites, some marvelously preserved.
- ▶ Observe polar bears, musk oxen, and perhaps elusive narwhals.

GLOBAL PERSPECTIVES GUEST SPEAKER

DR. IAN STIRLING

A Research Scientist Emeritus with Environment Canada and an Adjunct Professor in the Department of Biological Sciences at University of Alberta, Edmonton, he has done research on polar bears and polar seals for 50 years. He has won several awards including the Norris Award for Lifetime Achievement from the Society for Marine Mammalogy, and authored five books on bears and their ecology.

Visit our website to read staff and guest speaker bios for this expedition.



A Zodiac ride amid the big ice of Philpots Island.

DAYS 1 AND 2: U.S./KEFLAVÍK, ICELAND/REYKJAVÍK

Overnight flight to Keflavik. Upon arrival, choose to explore the Blue Lagoon and soak in the geothermal waters or visit the hot springs, the geothermal power plant and a horse farm. After lunch, check-in to our hotel. (Day 2: L,D)

DAY 3: REYKJAVÍK/KANGERLUSSUAQ, GREENLAND/EMBARK

This morning take a guided tour of the old town, including Hallgrímskirkja Church and the Museum. After lunch, fly by chartered aircraft to Greenland. Embark *National Geographic Explorer* at the head of Kangerlussuaq Fjord, a picturesque waterway that stretches 100 miles. Dozens of deep fjords carve into Greenland's west coast, many with glaciers fed by the ice cap that covers much of the country. (B,L,D)



Brightly painted houses, Greenland.

DAY 4: SISIMIUT, GREENLAND'S WEST COAST

At Sisimiut, a former whaling port, visit the museum and wander amid a jumble of wooden 18th-century buildings. (B,L,D)

DAYS 5-10: THE CANADIAN HIGH ARCTIC

We begin our exploration of the Canadian High Arctic with a visit to the small Inuit community of Pond Inlet, Nunavut. We will explore some of the beautiful bays and inlets along Baffin Island's northern coast and Lancaster Sound. We search for ringed seals, arctic foxes, and polar bears, as well as beluga. Perhaps even see the elusive narwhal, known for the long, spiraling tooth that projects up to ten feet. Possible stops to explore Beechey Island and the remains of the Franklin expedition's winter quarters and Lancaster Sound for polar bears on ice. (B,L,D)

DAY 11: DEVON ISLAND

At the entrance to the Northwest Passage, we

encounter Devon Island. Walk with our ship's archaeologist to learn about the Thule people that once inhabited this region and were the ancestors of all modern Inuit. At Philpots Island we hike the tundra and search for wildlife, including perhaps musk oxen. (B,L,D)

DAYS 12 AND 13: ELLESMERE ISLAND

Depending on ice and weather, head north up the beautiful and remote east coast of Ellesmere Island, where *Explorer* first ventured in 2014. Cruise along scenic Smith Bay bordered by steep mountains and tumbling glacial ice. Search for polar bears from the ship or hike and kayak in picturesque surroundings. Our flexible itinerary stops may include Skraeling Island, an archaeological find that shows the Norse once traded with the native Inuit here at Ellesmere, or we might go for a Zodiac cruise in Makinson Inlet, where tidewater glaciers tumble down to the sea. (B,L,D)

DAYS 14 AND 15: FARTHER NORTH

Explore to 80°N and hopefully beyond, if the ice allows. Our experienced captain and expedition team as well as our technological resources chart where the ice is penetrable. (B,L,D)

DAYS 16-19: NORTHWEST GREENLAND

The remote coast of Northwest Greenland is terra incognita with a history of expeditions: Peary, Hall and more. *Explorer* will be in true expedition mode as we search this vast uninhabited region for wildlife. Walk on land where humans have never set foot. Encounter glaciers and fjords. Visit the small community of Etah to learn about the people of the Far North. (B,L,D)



Inuit family "selfie."

DAY 20: QILAKITSOQ

Today we are back in familiar waters, stopping at Qilakitsoq, where a collection of mummies dating back to 1475 was discovered in 1972 and featured on the cover of *National Geographic* magazine. (B,L,D)



DAY 21: DISKO BAY & ILULISSAT

Sail into Disko Bay and set out to explore a tongue of the Greenland ice cap. Take an extraordinary cruise among the towering icebergs of the UNESCO World Heritage-designated Ilulissat Icefjord. Visit the town of Ilulissat and walk to the archaeological site at Sermermuit Valley. (B,L,D)

DAY 22: GREENLAND'S WEST COAST

Our final day in the scenic fjords. Zodiac cruise or kayak some of the picturesque waterways. (B,L,D)

DAY 23: KANGERLUSSUAQ/DISEMBARK/REYKJAVÍK, ICELAND

Disembark in Kangerlussuaq, and after a tour of the city, fly by charter to Reykjavik for stunning views over the Greenland icecap. Check-in to our hotel. (B,L,D)

DAY 24: REYKJAVÍK/KEFLAVÍK/U.S.

Have a guided tour of Reykjanes Peninsula. Transfer to Keflavik for flights home. (B,L)

EXPEDITION DETAILS

DATE: 2018 Aug. 17

OPTIONAL EXTENSIONS

Take a 3-day post-voyage extension to [Iceland](#) or a 1-day post-voyage extension to [Reykjavik's Golden Circle & Blue Lagoon](#). See pages 32-33 or visit our website for details.

NATIONAL GEOGRAPHIC PHOTOGRAPHERS

David Doubilet and Jennifer Hayes join in 2018. [Learn more at expeditions.com/photo](#)



ICELAND ILLUMINATED



With her unearthly beauty, world-class national character and some of the most awe-inspiring geology on the planet (it's home to more than 100 volcanoes and more extreme geothermal activity than any other country!), the far-flung land of fire and

ice is beckoning seasoned and novice travelers alike. Choose either our circumnavigation or our land, sea and air expedition to encounter this subarctic wonder as an explorer, not a tourist—for a fresh perspective and deeper understanding of its exhilarating allure.

On our *Circumnavigation of Iceland*, wind your way along shores and surrounding isles to witness the region's geology in all its manifestations—glaciers, thundering waterfalls, immense cliffs, boiling mud pits and stark lavascapes. Experience the highlights and travel off-the-beaten path to discover the unexpected. Plus, meet Iceland's people, get insight into their unique cultural heritage, the island's geography and its birdlife. Seeing it all in one 360° expedition is an irresistible idea.

Or discover a thrilling introduction to Iceland and West Greenland on our *Hot Springs and Icebergs* itinerary. Feel the extreme contrasts of fire and ice, from Iceland's thermal baths to the icy edge of Greenland's glaciers. Get a spectacular view of this massive landscape on our charter flights over Greenland's ice cap. Actively explore the deep fjords via Zodiac and kayak, opt to ride Icelandic horses, and revel in several opportunities to see the legendary Northern Lights and their beautiful cascades of color. This shorter trip is long on adventure and euphoria.





This page: Explore the ethereal Jökulsárlón glacier lagoon.

Opposite, top to bottom: We'll have several chances to experience the aurora borealis in both Iceland and Greenland; enjoy encounters with locals like the "Herring Ladies" of Siglufjörður.

A CIRCUMNAVIGATION OF ICELAND

11 DAYS/9 NIGHTS—ABOARD NATIONAL GEOGRAPHIC EXPLORER

PRICES FROM: \$10,270 to \$21,350 (See page 43 for complete pricing.)

Experience an enchanting land of geological extremes on a circumnavigation of Iceland. Encounter vast volcanic landscapes and one of the world's youngest islands, walk on lava fields and ice sheets, and feel the power of gushing hot springs and cascading waterfalls. Cruise among magnificent icebergs in Jökulsárlón, and spend time on the Arctic Circle spotting nesting puffins. Kayak into fjords and serene bays, and go hiking on magnificent and remote stretches of the coast. Cap off the adventure with a soak in the famous Blue Lagoon.

EXPEDITION HIGHLIGHTS

- ▶ Explore Europe's second largest ice cap, Vatnajökull, by snowmobile or super jeep.
- ▶ Sail into dramatic fjords; see a volcanic island that formed in 1963; marvel at the thundering Goðafoss Waterfall and the bubbling mud pools at Mývatn.
- ▶ Experience traditional Icelandic life from the herring industry to eiderdown production.
- ▶ Spot birdlife on the shores of Iceland and its surrounding isles.

SPECIAL MUSIC EXPERIENCES

Each departure will travel with a special on-board musicologist, who has arranged entertaining performances, on and off-ship, by leading Icelandic musicians.



Visit our website to read staff bios for these expeditions.

Above: Local musician performing at a private dinner on Viðey Island.

Below: Guests take in the power and beauty of Goðafoss waterfall.



DAYS 1 AND 2: U.S./REYKJAVÍK, ICELAND/EMBARK

Fly overnight to Reykjavík, the world's northernmost capital. Have a guided overview of the Old Town, including Hallgrímskirkja Cathedral with its 210-foot tower, and visit the National Museum, home to Viking treasures and artifacts, and unusual whalebone carvings. Embark *National Geographic Explorer*. (Day 2: L,D)

DAY 3: LÁTRABJARG/FLATEY ISLAND

Explore Iceland's western frontier, sailing past the immense Látrabjarg cliffs, the westernmost point of Iceland and home to a huge population of razorbills. The cliffs are an area once famous for egg collecting; the men were tied to ropes and lowered like spiders down onto the ledges. Continue to Flatey Island, a trading post for many centuries, for walks around the charming little hamlet that grew here, and take a Zodiac cruise along the coast. (B,L,D)

DAY 4: EXPLORING NORTHWESTERN ICELAND

Explore the beautiful and peaceful Westfjords region of Iceland. Perhaps take a hike to a remote waterfall or a Zodiac cruise alongside bird-covered cliffs. Enter Ísafjarðardjúp and land at Vigur Island to visit the Eider Farm and view the down cleaning process. (B,L,D)

DAY 5: ÍSAFJÖRDUR

Located in the Westfjords, Ísafjörður is surrounded by water on three sides, sculpted by glaciers. Explore Hornstrandir, Iceland's northernmost peninsula by Zodiac and watch for seabirds such as puffins, guillemots, razorbills, and kittiwakes, and bask in nearly 24 hours of daylight. (B,L,D)



Guests snowmobile on the Vatnajökull ice cap.

DAY 6: SIGLUFJÖRDUR AND AKUREYRI

At Siglufjörður, once the center of Iceland's once-thriving herring industry, visit the Herring Museum for a re-enactment and a tasting. At picturesque Akureyri explore the old town, with its beautifully maintained period houses, or visit the botanical garden. (B,L,D)

DAY 7: LAKE MÝVATN AND HÚSAVÍK

Drive to Mývatn, the most geologically active area in Iceland. See the boiling mud pools at Hverarönd, and at the Krafla geothermal area see the explosion crater at Viti. Continue to an unforgettable sight: Goðafoss, the waterfall of the gods. Meet the ship in Húsavík, and watch for whales as we sail north to the land of the midnight sun. Take Zodiacs ashore to the tiny island of Grimsey on the Arctic Circle and celebrate your official arrival to the Arctic. (B,L,D)

DAY 8: EXPLORING NORTHEAST ICELAND

Today explore Iceland's rugged east coast. Join naturalists for a hike or a Zodiac cruise and a view of the stacks at the end of the Langanes Peninsula. (B,L,D)



DAY 9: DJÚPIVOGUR

Dock in Djúpivogur to explore the vast Vatnajökull ice cap by snowmobile or super jeep. Via small boat, get up close and personal with the deep blue icebergs of the large ice lagoon of Jökulsárlón. (B,L,D)

DAY 10: ISLANDS OF HEIMAËY & SURTSEY, WESTMAN ISLANDS

In 1963, the world witnessed the birth of a new island, Surtsey, whose volcanic eruption was caught on film. Now a UNESCO World Heritage site, we will cruise past its shores. Heimaey was threatened by lava flows that nearly closed off its harbor. Visit the crater, where the earth is still hot, and have amazing views of areas that had been engulfed by lava. (B,L,D)

DAY 11: REYKJAVÍK/DISEMBARK/U.S.

Today we disembark in Reykjavík with options to visit either the famous Blue Lagoon thermal baths or the hot springs, geothermal power plant and a horse farm, prior to our flight home. (B,L)



Jökulsárlón glacier lagoon.

EXPEDITION DETAILS

DATES: 2018 Jun. 28; Jul. 7, 16

OPTIONAL EXTENSION

Add a one-day pre-voyage extension to see [Reykjavík's Golden Circle & Blue Lagoon](#), or a new three-day post-voyage extension [Glacier Heli-Hiking in Iceland](#). See pages 32-33, or visit our website.

NATIONAL GEOGRAPHIC PHOTOGRAPHER

Join Tyrone Turner June 28 and July 7. [Learn more at expeditions.com/photo](http://expeditions.com/photo)



HOT SPRINGS AND ICEBERGS: ICELAND TO WEST GREENLAND

9 DAYS/7 NIGHTS—ABOARD NATIONAL GEOGRAPHIC EXPLORER

PRICES FROM \$6,990 to \$13,950 (See page 43 for complete prices.)

Discover the true natures of fiery Iceland and icy Greenland on a wide-ranging adventure in a compact timeframe. Over just a week, you'll soak in the heat of Iceland's thermal baths, feel the spray of its thunderous falls, and explore the cool urban capital of Reykjavík. By air, see Greenland's epic ice cap that covers 80% of the country, then sail along its ice edge with glaciers that can stretch over 100 miles and calve some of the largest icebergs on Earth. Venture into Greenland's long fjords choked with massive bergs and call at small communities to meet the hardy inhabitants. And it's all timed to see the legendary Northern Lights and their cascades of color.

EXPEDITION HIGHLIGHTS

- ▶ Feel the extreme contrasts of fire and ice from the warmth of the Blue Lagoon's outdoor thermal baths to kayaking amid shimmering glacial ice.
- ▶ See the towering ice edge of Greenland up close and sail among massive icebergs.
- ▶ Actively explore: hike, kayak, swim, horseback ride, and Zodiac cruise.
- ▶ Enjoy an exclusive, private dinner on Viðey Island accompanied by acclaimed local musicians.
- ▶ Take in opportunities to view the Northern Lights in both Iceland and Greenland.

GLOBAL PERSPECTIVES GUEST SPEAKERS

Our Global Perspectives guest speaker program aboard *National Geographic Explorer* pairs engaging and renowned experts with our expedition team's expertise to further enrich your experience.



Northern Lights, Iceland.

DAYS 1 AND 2: U.S./ KEFLAVÍK, ICELAND/REYKJAVÍK

Fly overnight to Reykjavík, the world's northernmost capital. Choose an excursion to swim in the thermal baths of the Blue Lagoon or learn about the hot springs and volcanic activity at the geothermal power plant and experience an Icelandic horse show at the Eldhestar Farm and Riding Centre. (Day 2: L)

DAY 3: REYKJAVÍK

Today you may choose from several active options. Go hiking across the rolling scrublands just outside the city, ride an Icelandic horse through the Hafnarfjörður lava field, or join a cooking class at the Salt Kitchen. Or take a full day's excursion around the Golden Circle. Tonight, a special treat: ride a ferry to scenic Viðey Island, where an exclusive dinner and musical performance await. (B,L,D)



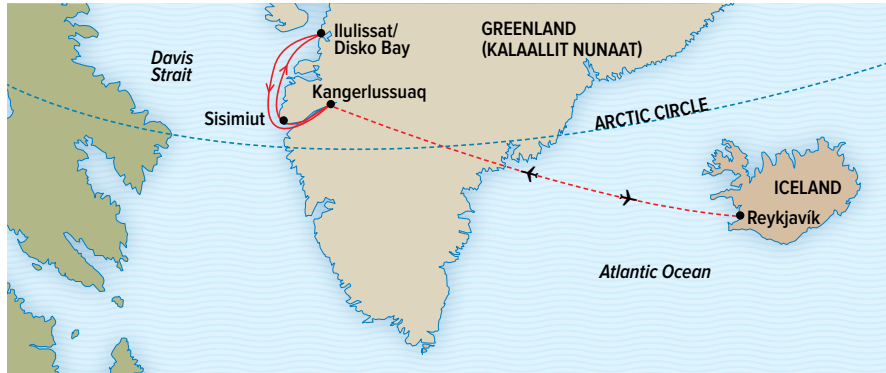
Guests kayaking in Greenland.

DAY 4: REYKJAVÍK/KANGERLUSSUAQ, GREENLAND/EMBARK

Choose a walking or biking tour of Reykjavík in the morning followed by a chartered flight to Greenland and take in stunning views over the Greenland ice cap. Embark *National Geographic Explorer*. (B,L,D)

DAY 5: GREENLAND'S WEST COAST & SISIMIUT

Dozens of deep fjords carve into Greenland's west coast, many with glaciers fed by the ice cap that covers 80% of the country. Trace this ragged coastline, and search for humpback and minke whales. At Sisimiut, a former whaling port, visit the museum, wander amid a jumble of wooden 18th-century buildings, and welcome aboard students (*at right*) studying the arts of making Greenlandic national clothing—a cornerstone of the traditional culture. (B,L,D)



DAY 6: DISKO BAY & ILULISSAT

Sail into Disko Bay and set out to explore a tongue of the Greenland ice cap. Take an extraordinary cruise among the towering icebergs of the UNESCO World Heritage designated Ilulissat Icefjord. Visit the town of Ilulissat and walk to the archaeological site at Sermermiut Valley. (B,L,D)

DAY 7: EXPLORING GREENLAND'S WEST COAST

This is our final day in the scenic fjords to Zodiac cruise, kayak, and hike across the tundra. (B,L,D)

DAY 8: KANGERLUSSUAQ/DISEMBARK/REYKJAVÍK, ICELAND

Disembark in Kangerlussuaq, fly by charter for the second time over the Greenland ice cap to Reykjavík and settle into your hotel. (B,L,D)

DAY 9: REYKJAVÍK/KEFLAVÍK/U.S.

Have a guided tour of Reykjanes Peninsula, learn first-hand about the country's innovative approach to geothermal energy, or if you haven't yet experienced the Blue Lagoon, now's your chance! Transfer to Keflavík for flights home. (B,L)

EXPEDITION DETAILS

DATE: 2018 Sep. 5, 9

SPECIAL OFFER:

Book now and receive complimentary round-trip **charter airfare** between Reykjavík and Kangerlussuaq. Call for details.

NATIONAL GEOGRAPHIC PHOTOGRAPHER

Join **Ronan Donovan** in 2018.

Learn more at expeditions.com/photo



Students at the National School for Greenlandic Clothing.

OPTIONAL EXPEDITION EXTENSIONS



Hiking on Mýrdalsjökull glacier.

NEW! ADD GLACIER HELI-HIKING

POST-VOYAGE/3 DAYS/2 NIGHTS

\$6,950* Per Person, Double Occupancy

Experience Iceland's magnificent landscapes from a unique viewpoint. Take a scenic helicopter tour to two different glaciers where you'll have the rare opportunity to go on a glacier hike. Plus, explore the world's only man-made ice cave and go deep underground to see the brilliant-blue ice that's been forming over centuries. Add it after **Circumnavigation of Iceland** or **Svalbard, Iceland and Greenland's East Coast**.



Blue Lagoon hot spring spa in Reykjavik, Iceland.

ADD REYKJAVÍK'S GOLDEN CIRCLE

POST-VOYAGE/1 DAY/1 NIGHT

*Please call for 2018 pricing.

Extend your stay in Reykjavik, the world's northernmost capital. Enjoy the surreal Blue Lagoon, and have a guided in-depth experience along the famed Golden Circle with its boiling pools, geysers and waterfalls. Add it after **Epic 80°N**.

» SEE OUR WEBSITE FOR COMPLETE ITINERARY DETAILS.



Sognefjord, Norway.

ADD NORWAY'S FJORDS

PRE-VOYAGE/5 DAYS/5 NIGHTS

\$4,390* Per Person, Double Occupancy

The rich landscapes of southern Norway, including Sognefjord—the longest and deepest fjord in Norway—are the ideal addition to your adventures. Thundering waterfalls and snowy peaks offer wonderful photo ops. Add it before **Land of the Ice Bears** and **Svalbard, Iceland & Greenland's East Coast**.



Geysir, Golden Circle.

ADD ICELAND

Enhance your Arctic travels with an in-depth exploration of the land of fire and ice. Enjoy many of the must-see sights, from the famous Blue Lagoon hot springs to the Golden Circle with its spouting geysers and bubbling mud pools. Then go further afield to less traveled territory. See Goðafoss waterfall in the north of Iceland, one of the most impressive falls in Europe and explore Thingvellir National Park, a remarkable geological site and the country's most historic site. You'll also get to know the intimate yet cosmopolitan city of Reykjavík and get a taste of Icelandic fare at renowned local restaurants.

POST-VOYAGE/4 DAYS/4 NIGHTS

Add it after **Land of the Ice Bears, Norway's Fjords and Arctic Svalbard** and **Svalbard, Iceland & Greenland's East Coast**.

*Please call for 2018 pricing.

POST-VOYAGE/3 DAYS/3 NIGHTS

Add it after **Epic 80°N**.

*Please call for 2018 pricing.

* Airfare is not included on all extensions.

TRAVEL WITH AN A+ EXPEDITION TEAM

The comment cards we receive from guests after every voyage consistently express the same sentiments: “Outstanding expedition staff.” Discover the Arctic with a veteran expedition leader, an assistant expedition leader, and a team of seven naturalists/cultural specialists well-versed in the region’s flora, fauna, and human history. An underwater specialist will share their expertise and passion for the incredible undersea, while a National Geographic photographer, a Lindblad-National Geographic certified photo instructor, and a video chronicler aboard will ensure you go home with amazing shots and a DVD that captures the story of your voyage. Plus, a wellness specialist will help enhance the relaxing and revitalizing benefits of life aboard.

▶ LEARN MORE AT [EXPEDITIONS.COM/EXPERTBIOS](https://www.nationalgeographic.com/expeditions/expertbios)
FOR FULL BIOS ON OUR STAFF



Below, from left to right: Some expedition team members aboard National Geographic Explorer include expedition leader Lucho Verdesoto, naturalist Carl Erik Kilander, Lindblad-National Geographic certified photo instructor/naturalist Michael S. Nolan, undersea specialist Alyssa Adler.





Staff leading guests ashore on Zodiac.

Global Perspectives Guest Speakers

Our Global Perspectives guest speaker program aboard *National Geographic Explorer* pairs engaging and renowned experts with our expedition team's expertise to further enrich your experience. Depending on your select itinerary, you might travel with a scientist doing polar research, a documentary filmmaker, a foreign dignitary, or a policymaker affecting change in the region we're exploring. You'll have the opportunity to hear them in the context of their talks, but also mingle with them over drinks, dinner and deck time—adding a layer of insight and interest to the Arctic no other company can offer.



Dr. Ian Stirling aboard in 2018.

CAPTURE THE ADVENTURE— TAKE GREAT PHOTOS

NATIONAL GEOGRAPHIC

National Geographic Explorer is the only expedition ship exploring the Arctic with National Geographic photographers aboard every departure. These photographers, many with significant careers to their credit, have inspired countless professional and amateur photographers, and accompany our ships to inspire and assist you. And, they are flanked by Lindblad-National Geographic certified photo instructors, naturalists trained by National Geographic photographers, to assist you with your camera settings, the basics of composition, observation, and more to equip you with skills.

Now, every guest—from smartphone camera users to semi-pro shooters—can stand side-by-side with top photographers, pick up tips in the field, and take great photos. And you'll want to—the Arctic is so diverse and a once-in-a-lifetime experience to capture. So no worries, you don't have to consider yourself a photographer to participate in the fun and rewards of "aim & create." You'll return home with your best photos ever, and a lifelong skill.



DAVID DOUBILET & JEN HAYES

Acclaimed underwater photographer David Doubilet and his wife and underwater partner, photojournalist Jennifer Hayes have been collaborating on projects since 1999. Together their work is creating a visual voice for the world's oceans and their assignments for *National Geographic* magazine have taken them from the icy waters of Antarctica to Cuba's pristine reefs and beyond. Share the adventure with them on the **August 17, 2018 departure**.



ERIKA LARSEN

Erika Larsen has photographed more than 25 stories for *National Geographic* magazine over the last three decades. Join her on the **May 23 or 30, 2018 departures**.



DAN WESTERGRE

Dan Westergren has spent three decades producing award-winning images as a National Geographic Society photographer and the former Director of Photography at *National Geographic Traveler*. Travel with him on the **May 3 or June 13, 2018** departures.



TYRONE TURNER

Tyrone Turner is an award-winning photojournalist with several *National Geographic* magazine articles whose assignments have taken him from Brazil to Baghdad. Travel with him on the **June 28 or July 7, 2018** departures.



PHIL SCHERMEISTER

Phil Schermeister has completed more than 40 major assignments for the National Geographic Book Division, *National Geographic* magazine and other National Geographic publications. Travel with him on the **August 8, 2018** departure.



RONAN DONOVAN

A biologist turned photographer and filmmaker, Ronan Donovan's work has been featured in *National Geographic* magazine, the Smithsonian National Museum of Natural History and on PBS Nature. Travel with him on the **September 5 or 9, 2018** departures.

ONBOARD GEAR LOCKER

Another unique component to our Expedition Photography program is *Explorer's* gear locker, stocked with the latest by B&H Photo Video, and yours to try with our compliments. Field test new glass, camera bodies and more during your expedition. And to get you ready you'll have access to special gear recommendations and packages, plus booked guest discounts. And check out teaching videos from our annual photography event with B&H at www.optic2017.com. Ask your expedition specialist for details.





EXCEPTIONAL HOTEL STAFF



The Arctic and sub-Arctic can be challenging for our wine steward, since there's little agriculture and no vineyards. So on these voyages we stock fine European wines to pair with regional flavors.

National Geographic Explorer has an appetite for dining excellence as well as adventure. Serge Dansereau, the head chef and owner of the Sydney, Australia iconic Bathers' Pavilion Café, is a multi-award winning chef, renowned internationally, and considered 'the father of the fresh food movement.' He designs the menus and trains the staff aboard ship and his menu concepts are brought to life daily by *Explorer's* Executive Chef. Count on them to keep your expeditionary spirit fed, so to speak, and for daily diversity and regional flavors.

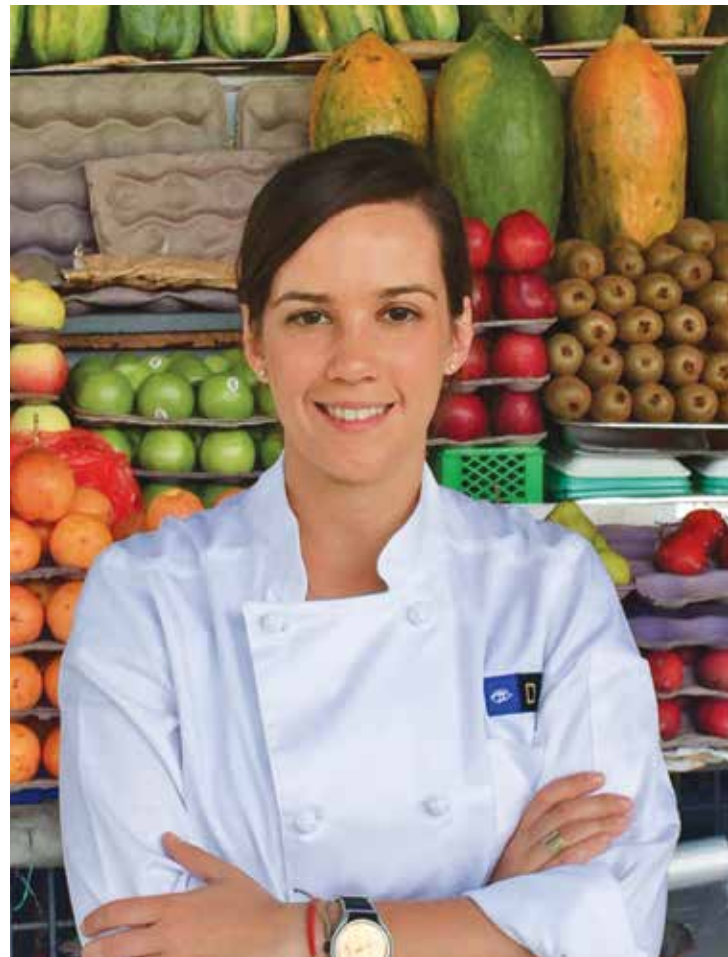




The dining room is inviting and informal. No assigned seating makes for easy mingling with congenial fellow guests, expedition staffers, and special guests. Breakfast and lunches are often buffet-style; dinners are artfully plated and served. Save room for dessert—extraordinary daily!

“Discovering sustainable local growers and fisheries on our itineraries to ensure that our guests “taste” the regions they’re exploring is rewarding work. Unlike cruise companies which provide a food program across the fleet, our chefs have the freedom to execute Serge’s smartly conceived dishes while taking advantage of what’s at hand. When a local boat hails Explorer with line-caught fish, the chef can say yes—and offer Gravlax-style Arctic Char with mustard, Greenlandic honey, and dark rye toast. Our goal is for our guests to experience the geography through the food served aboard wherever possible. And to always dine extraordinarily well.”

—Ana Esteves, Manager Hotel Operations, Lindblad Expeditions





THE LUXURY OF COMFORT

National Geographic Explorer provides a welcoming home in faraway lands. Decorated in relaxing earth tones, her 81 cabins, including four suites with balconies, nine cabins with balconies, and 14 solo cabins are inviting and rewarding—with deluxe bedding, our signature feather duvets and thick terry robes. All cabins feature flat screen TVs with movie programming, as well as channels broadcasting the live feed from our remote-controlled crow's nest camera, and our electronic chart system. And all cabins are equipped with Ethernet connections and plugs for laptops, phone or camera chargers.

▶ TO LEARN MORE ABOUT NATIONAL GEOGRAPHIC EXPLORER, VISIT [EXPEDITIONS.COM/NGEXPLORER](https://www.expeditions.com/ngexplorer)



This page, right: Brimming with definitive guides, reference books and gorgeously illustrated coffee table books, the ship's library is an ideal place to read or study a topic. Opposite, top to bottom: Suites and cabins with balconies provide a constant connection with the Arctic's stunning vistas. Enjoy panoramic views in the onboard fitness center. A classic Swedish sauna is the perfect place to end an active day.



Expansive decks invite you outdoors to relax, enjoy a morning coffee, or watch for wildlife.



NATIONAL GEOGRAPHIC EXPLORER

CAPACITY: 148 guests in 81 outside cabins.
REGISTRY: Bahamas. **OVERALL LENGTH:** 367 feet.

National Geographic Explorer is a state-of-the-art expedition ship, and the flagship of the Lindblad fleet. It is a fully stabilized, ice-class vessel, with an ice-reinforced hull, enabling it to navigate polar passages while providing exceptional comfort. It carries kayaks and a fleet of Zodiac landing craft. An undersea specialist operates a remotely operated vehicle (ROV) and sophisticated video equipment, extending access to the underwater world.

PUBLIC AREAS: Bistro bar; chart room; restaurant; global gallery; library, lounge with full service bar and state-of-the-art facilities for films, slideshows and presentations; mudroom with lockers for expedition gear, and observation lounge. Our “open bridge” provides guests an opportunity to meet our officers and captain and learn about navigation.

CATEGORY 1: Main Deck with one or two portholes
#301-308

CATEGORY 2: Main Deck with window #317-320, 335-336

CATEGORY 3: Main Deck with window #313-316, 321-328, 337-340, 342, 344, 346, 348, 350

CATEGORY 4: Upper and Veranda Decks with window #103-104, 107-108, 201-202, 204-207, 210, 212, 217, 226, 228

CATEGORY 5: Upper Deck with balcony #209, 211, 214, 216, 218, 220-222, 224

CATEGORY 6: Veranda Deck–Suite #101-102;
Upper Deck–Suite with balcony #213

CATEGORY 7: Upper Deck–Suite with balcony #215, 219, 230

MEALS: Served in single seatings with unassigned tables for an informal atmosphere and easy mingling. Menu is international with local flair.

CABINS: All cabins face outside with windows or portholes, private facilities and climate controls. Some cabins have balconies. Equipped with Ethernet and Wi-Fi connections and USB ports for mobile devices.

EXPEDITION EQUIPMENT: Zodiac landing craft, kayaks, Remotely Operated Vehicle (ROV), hydrophone, splashcam, underwater video camera, crow’s nest remote controlled camera, video microscope, snorkeling gear.

SPECIAL FEATURES: A full-time doctor, undersea specialist, National Geographic photographer, Lindblad-National Geographic certified photo instructor and a video chronicler, internet café and laundry.

WELLNESS: The vessel is staffed by a wellness specialist and features a glass-enclosed fitness center, outdoor stretching area, two LEXspa treatment rooms and sauna.

CATEGORY A SOLO: Main Deck with window #309-312, 329-334

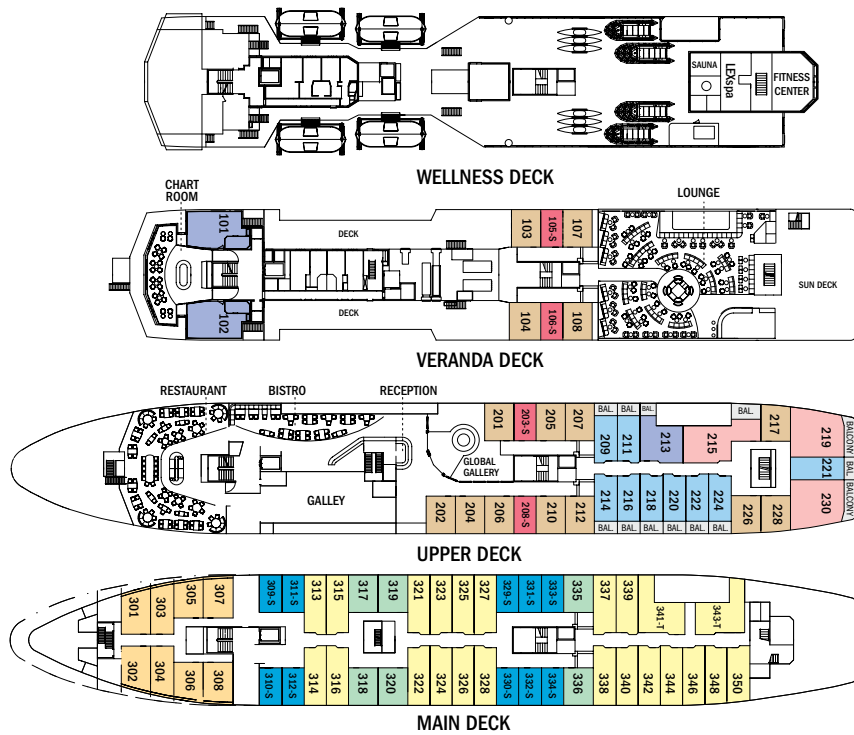
CATEGORY B SOLO: Upper and Veranda Decks with window #105-106, 203, 208

CATEGORY 3 TRIPLE: Main Deck with window #341, 343

SHARED ACCOMMODATIONS: Available in Categories 1 and 2.

SOLE OCCUPANCY: Cabins available in Categories A and B.

NOTE: Cabins #209, 211, 214, 216-218, 220, 222, 224, 226, 228, 303-306—These cabins have one queen-sized bed. All other double cabins have two lower single beds; some can convert to a queen-sized bed. Third person rates are available in the designated triple occupancy cabins at one-half the double occupancy rate. Cabins #341, 343, 101, 102, 215, 219 and 230 can accommodate a third person.



Clockwise from top: Category 6 suite; Category 5 cabins all include a balcony; spacious closet; standard bathroom.

» TAKE A VIRTUAL VIDEO TOUR AT WWW.EXPEDITIONS.COM/NGEXPLORER

Prices are per person, double occupancy unless indicated as solo.

ITINERARY	YEAR	CAT. 1	CAT. 2	CAT. 3	CAT. 4	CAT. 5	CAT. 6	CAT. 7	CAT. A SOLO	CAT. B SOLO	ADVANCE PAYMENT	NOTE
Land of the Ice Bears – Page 14	2018	\$10,430	\$11,150	\$11,630	\$12,320	\$15,620	\$17,100	\$19,520	\$13,950	\$14,540	\$1,500	Includes two hotel nights. Sample Airfares: round-trip Newark/Oslo. Economy from: \$1,180; Business from \$3,960. Charter Airfare: \$760 (roundtrip Oslo/Longyearbyen).
Norway's Fjords and Arctic Svalbard – Page 16	2018	\$16,990	\$17,980	\$18,930	\$20,350	\$23,490	\$27,690	\$31,820	\$22,470	\$23,660	\$2,500	Includes one hotel night. Sample Airfares: New York/Bergen, Oslo/Newark: Economy from: \$700; Business from \$3,800. Charter airfare: \$380 (Longyearbyen/Oslo).
Svalbard, Iceland & Greenland's East Coast – Page 18	2018	\$15,650	\$16,560	\$17,310	\$18,590	\$21,470	\$24,990	\$28,750	\$20,690	\$21,640	\$2,500	Includes one hotel night. Sample Airfares: Newark/Oslo, Reykjavik/New York. \$900; Business from \$2,800; Charter Airfare: \$380 (Oslo/Longyearbyen).
Exploring Greenland and the Canadian High Arctic – Page 22	2018	\$13,990	\$14,990	\$15,600	\$16,750	\$20,200	\$23,290	\$27,000	\$18,740	\$19,500	\$1,500	Includes two hotel nights Reykjavik. Sample Airfares: Round trip Newark/Keflavik: Economy from \$600; Business from \$2,300; Round trip charter airfare: \$1,520 (Reykjavik/Kangerlussuaq).
Epic 80°N: Greenland, Baffin and Ellesmere Islands – Page 24	2018	\$25,990	\$27,990	\$28,970	\$30,990	\$37,470	\$42,710	\$49,640	\$34,990	\$36,210	\$3,000	Includes two hotel nights Reykjavik. Sample Airfares: Round trip Newark/Keflavik: Economy from \$600; Business airfare from \$2,300; Round trip charter airfare: \$1,520 (Reykjavik/Kangerlussuaq).
Circumnavigation of Iceland – Page 28	2018	\$10,270	\$11,890	\$12,360	\$14,130	\$15,410	\$18,420	\$21,350	\$14,860	\$15,450	\$1,500	Sample Airfare: New York/Reykjavik, Reykjavik/New York: Economy from \$600; Business from \$2,000.
Hot Springs and Icebergs: Iceland to West Greenland – Page 30	2018	\$6,990	\$7,590	\$7,870	\$8,540	\$10,090	\$12,110	\$13,950	\$9,490	\$9,840	\$750	Includes three hotel nights Reykjavik. Sample Airfares: Round trip Newark/Keflavik: Economy from \$600; Business from \$2,300; Round trip charter airfare: \$1,520 (Reykjavik/Kangerlussuaq).

INCLUSIVE PRICING MEANS VALUE PLUS EXPERIENCES

FREE AIRFARE ON SELECT DEPARTURES

On voyages with complimentary air offers, airfare must be ticketed by Lindblad Expeditions. All offers are valid for new bookings only, subject to availability at the time of booking, and may not be combined with other offers, and pre/post extensions. Call for details.

WITH COMPLIMENTS

Your bar tab aboard ship and all tips for the crew will be covered.

NO CHARGE FOR IN-DEPTH ARCTIC EXPERTISE

The knowledgeable guidance and company of our expedition staff, our Global Perspectives guest speakers, plus all lectures and presentations, and our fully stocked onboard library, are open to all and included in the price.


NO EXTRA CHARGES FOR ACTIVITIES

All the daily activities—from city explorations to Zodiac rides, kayaking, or hiking—are included in the price.

- ✓ Meals on land, as indicated in the itineraries
- ✓ Special access permits, park fees, port taxes
- ✓ Transfers to and from group flights
- ✓ Hotel accommodations where relevant, as indicated in the itineraries.
- ✓ Guided overviews pre- and/or post-expedition as indicated in the itinerary

AND FREELY ENJOY THE FOLLOWING ABOARD SHIP:


- ✓ All meals—from breakfast, lunch & dinner in the dining room
- ✓ All beverages including unlimited cappuccinos, latte, coffee, tea & soda
- ✓ Plus beer, wine & cocktails
- ✓ Crew gratuities
- ✓ Hors d'oeuvres & snacks during lounge recap
- ✓ Tea time with pastries; all-day fruit, cookies
- ✓ Fitness Center with elliptical, treadmill, stationary bicycle, free weights, bands & more
- ✓ Traditional Swedish Sauna
- ✓ Daily stretching class with wellness specialist
- ✓ Mac computers for downloading your camera's memory card & Internet access
- ✓ Access to the ship's Bridge for optimal observation and to watch navigation
- ✓ Complimentary refillable water bottle



LOG ON TO EXPEDITIONS.COM
Find everything you need to dream, research or plan travel to 40+ destinations worldwide.

**Be part of our expedition community—
Join in! Here's how:**

- ▶ Check our daily blog: expeditions.com/blog
- ▶ Like us on Facebook: get inspired and chime in at: facebook.com/LindbladExpeditions
- ▶ Subscribe to our videos on youtube.com/lindbladexpeditions
- ▶ Follow [@LindbladEXP](https://instagram.com/LindbladEXP) on Instagram and Twitter, and find Sven Lindblad on Instagram at [@solindblad](https://instagram.com/solindblad).



RESERVATION INFORMATION

Costs Include: All accommodations aboard ships or in hotels per itinerary or similar, all meals and beverages aboard ship, meals on land as indicated, air transportation where indicated as included, shore excursions, sightseeing and entrance fees, special access permits, transfers to and from group flights, use of kayaks, tips, taxes and service charges, services of a ship physician on most voyages, and services of our expedition staff.

Not Included: Air transportation (except where shown as included), extensions, passport, visa, immigration fees, meals not indicated, travel protection plan, items of a personal nature, such as e-mail, voyage DVD, laundry and premium alcoholic beverages.

Airfare: For all programs, airfare is an additional cost unless otherwise indicated. Sample airfares are subject to change. We will gladly assist in making your air arrangements for a \$50 per person service fee.

TERMS & CONDITIONS

Reservations: To reserve your place, an advance payment is required at the time of reservation. The per person advance payment amount varies by program, and is outlined on page 19, as well as on our website. Certain longer voyages may carry additional advance deposit requirements due to high demand for these voyages. Payment is accepted by Visa, MasterCard, American Express, Discover, or by check.

Receipt of your initial payment indicates your acceptance of our complete Terms and Conditions. We require written notice at the time of reservation for any physical condition, diet, or treatment requiring special attention.

Once your reservation is confirmed, we urge you to use your personalized online account for important information to help you prepare for your voyage. Managing your documents online will facilitate fast and accurate communication, and allow you to provide us with pertinent details we require, in order to complete your reservation. Your online account gives you access to your Expedition Guide, which includes valuable information specific to your voyage. You can also use your online account to make easy payments, view recommended flights and reading material, packing list, and more.

Final Payment: Final payment is due 120 days prior to departure. Payment schedules may vary for certain longer voyages, due to high demand for these voyages. We reserve the right to cancel your reservation if payment has not been received by final payment due date.

Travel Protection Plan: We strongly recommend that you take advantage of our Travel Protection Plan. This plan offers comprehensive coverage to protect you from cancellation fees, costs incurred due to trip delays/interruption, medical assistance, and damaged or lost baggage, and provides medical assistance and evacuation during your travels. Our Travel Protection Plan is available for U.S. and Canadian residents only, and may be purchased any time prior to final payment due date. Travel Protection premiums are non-refundable once plan is purchased.

Smoking Policy: Smoking is allowed only in designated outdoor areas.

Responsibility and Other Terms & Conditions: Certain other provisions concerning, among other things, limitations of Lindblad Expeditions' and the National Geographic Society's liability for loss of property, injury, illness or death during the voyage will be provided to all guests on the ship's ticket sent prior to departure, and are also available on our website at www.expeditions.com/terms, or upon request. By registering for a trip, the guest agrees to all such terms and conditions.

Note: Itineraries and prices listed in this brochure are valid as of publication date, and are subject to change. Under normal conditions, the total expedition cost is guaranteed at the time of booking. However, the published price is determined far in advance of initial departure on the basis of then-existing projections of fuel and other costs. In the event we determine that current costs create an unsustainable financial model, including but not limited to increases in the price of fuel, currency fluctuations, increases in government taxes or levies, or increased security costs, we reserve the right to pass on these costs to you, to cover such unexpected increases. We will always provide a transparent accounting of the reason for such an increase in costs.

CANCELLATION POLICY	
Number of Days Prior to Expedition Start	Per Person Cancellation Fee
180 or more days	\$750*
179–120 days	Advance payment cost
119–90 days	25% of trip cost
89–60 days	50% of trip cost
59–0 days	No refund

*\$750 will be rewarded in the form of a Lindblad Expeditions Travel Certificate.

This cancellation policy applies to expeditions as well as pre- or post- extensions, as well as all other additional services.


The effective date of a cancellation will be the date on which your cancellation notice is received. Note: Airline cancellation policies vary by carrier, as well as the type of fare used to issue your ticket.

Any revisions you make within the cancellation penalty period, such as departure date or choice of voyage, are subject to cancellation fees.


Cancellation policy for certain longer voyages and Holiday departures may vary due to high demand for these voyages. Our Group cancellation policies are listed in the Terms and Conditions section of our website, or you may call us for details. We stress the importance of purchasing a travel protection plan to protect yourself from fees in the event you need to cancel your reservation.

United States Tour Operators Association
\$1 Million Travelers Assistance Program

Lindblad Expeditions, as an Active Member of USTOA, is required to post \$1 Million with USTOA to be used to reimburse, in accordance with the terms and conditions of the USTOA \$1 Million Travelers Assistance Program, the advance payments of Lindblad Expeditions customers in the unlikely event of Lindblad Expeditions bankruptcy, insolvency or cessation of business. Further, you should understand that the \$1 Million posted by Lindblad Expeditions may be sufficient to provide only a partial recovery of the advance payments received by Lindblad Expeditions. More details of the USTOA Travelers Assistance Program may be obtained by writing to USTOA at 345 Seventh Avenue, Suite 1801, New York, New York 10001, or by email to information@ustoa.com or by visiting their website at www.USTOA.com.



We are proud to be a Founding Member of Adventure Collection—a family of the world's most trusted and experienced active travel companies. Each member company of Adventure Collection is dedicated to enriching the lives of its guests and to giving back to the areas in which it travels. For more information visit www.AdventureCollection.com.



©2017 Lindblad Expeditions

Lindblad Expeditions and the Eye are the trademarks of Lindblad Expeditions. All rights reserved. NATIONAL GEOGRAPHIC and the Yellow Border are the trademarks of the National Geographic Society. All rights reserved.

Photo Credits: Sisse Brimberg & Cotton Coulson, Stewart Cohen, David Cothran, Jay Dickman, Eric Guth, Orsolya Haarberg/Minden, Ralph Lee Hopkins, Dagný Ívardsdóttir, Jennifer Labrecque, Sven-Olof Lindblad, Raymond Loewe, Michael Melford, Paul Nicklen, Michael S Nolan, Vadim Petrakov/Shutterstock, Marco Ricca, Kevin Schafer, Gerhard Zwerger-Schon, Susan Seubert, Kelly Stemmel, Ian Strachan, Mark Thiessen, Tyrone Turner, Jan Vermeer/Minden, Suranga Weeratuna/Alamy.

For Reservations:

Contact your travel advisor or Lindblad Expeditions

1.800.EXPEDITION (1.800.397.3348)

Reservation Hours: Monday – Friday 9am – 10pm ET

Saturday & Sunday 10am – 5pm ET

Lindblad Expeditions, Inc., 96 Morton Street, New York, NY 10014

Phone: 212.261.9000 • Fax: 212.265.3770

email: explore@expeditions.com For additional information and online reservations, visit us on the Web: www.expeditions.com



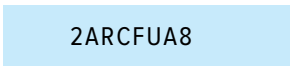
96 Morton Street
New York, NY 10014

PRSR STD
U.S. POSTAGE
PAID
LINDBLAD
EXPEDITIONS

Account Number:



Expedition Code:



1.800.EXPEDITION | WWW.EXPEDITIONS.COM

♻️ Printed on 10% recycled content paper with soy-based inks. We recommend that you pass this along for others to enjoy or recycle.

ARC-077

SELECTED HONORS & AWARDS

- » Condé Nast Traveler’s Readers’ Choice Award—Top Small Ship Cruise Lines, 2016, 2015, 2014
- » Virtuoso “Best VAST Partner” Award, 2016
- » Cruise Critic Editor’s Pick Awards “Best for Adventure,” 2016, 2013, 2012, 2011, 2010
- » 2016 World Tourism Award
- » Andrew Harper’s Reader Choice Awards: Best Cruise Lines, 2016
- » Town & Country Cruise Awards: Best for Families and Onboard Activities, Expedition Cruises, 2016
- » Porthole Cruise Magazine Readers’ Choice Awards: Best Expedition Cruise Line, 2015
- » Tourism Cares Travel Philanthropy Awards: Legacy in Travel Philanthropy, 2015
- » Condé Nast Traveler’s “Gold List,” 2013, 2009, 2008, 2007, 2006, 2005
- » Virtuoso “Sustainable Tourism Leadership-Supplier” Award, 2013

- » Travel + Leisure “World’s Best” Award for Small-Ship Cruise Lines, 2013, 2012, 2011, 2010, 2009, 2008
- » Travel + Leisure “World’s Best for Families” Award for Small-Ship Cruise Lines, 2012, 2011, 2010, 2009
- » Climate Champion Award to Sven Lindblad by Clean Air-Cool Planet, 2009

▶ [GO TO WWW.EXPEDITIONS.COM/AWARDS](http://WWW.EXPEDITIONS.COM/AWARDS) FOR AN EXTENDED LIST.

