

ARCTIC

EXPERIENCE
THE ARCTIC
WITH ALL
YOUR SENSES

20 ITINERARIES
4 WILD REGIONS
3 EXPEDITION SHIPS

**INTRODUCING
CHANGE**
A PERMANENT
POLAR ART EXHIBIT
OPENING ABOARD
*NATIONAL GEOGRAPHIC
ENDURANCE*, APRIL 2020

Nordfjord, NORWAY

61.90° N, 5.99° E

WHEN THE PROMISE THAT OUR EXPEDITION SHIPS WILL GET YOU IN CLOSE PAYS OFF PERSONALLY

You know the charge you get when you come upon something wild and unexpected, something rare and beautiful? We live for those moments. We sail to the ends of the Earth to find them, to discover them anew, and conjure them for our guests.

THAT'S THE **EXHILARATION OF DISCOVERY**

Cover photo: Humpback whales, Illulissat, Greenland. © Arvind Jayashankar

This page: National Geographic Orion noses into waterfall. Nordfjord, Norway. © Ralph Lee Hopkins

TABLE OF CONTENTS

- 2 Feeling the Arctic
- 4 Where Awesome Is
- 6 All About Teamwork
- 8 The Perfect Platform
- 10 National Geographic Photography
- 12 Art of Expedition Travel

SVALBARD & NORWAY

- 18 Land of the Ice Bears: An In-Depth Exploration of Arctic Svalbard
- 19 Svalbard in the Spring: Polar Bears, Arctic Light & Epic Ice
- 20 Norway's Fjords & Arctic Svalbard
- 21 Norwegian Discovery: Svalbard & the Northern Fjords
- 23 Norwegian Fjords & Scottish Isles

ICELAND & FAROES

- 28 A Circumnavigation of Iceland
- 29 Wild Iceland Escape
- 30 Legendary Northern Isles: Scotland, Faroes & Iceland
- 31 Coastal Wonders of Norway, the Faroe Islands & Iceland

GREENLAND & CANADA

- 36 Exploring Greenland and the Canadian High Arctic
- 37 Fabled Lands of the North: Greenland to Newfoundland
- 38 The Canadian Maritimes & Newfoundland
- 39 Arctic Exploration: A Voyage to Iceland, East Greenland & Norway
- 40 East Greenland: Wild Shores of the High Arctic
- 41 Iceland's Wild West Coast to East Greenland

ARCTIC & RUSSIAN FAR EAST

- 46 Northeast Passage: An Unforgettable Voyage from Norway to Alaska
- 47 Across the Bering Sea: From Katmai to Kamchatka
- 48 Exploring Russia's Far East & Wrangel Island
- 49 Bering Sea Wilderness: Pribilofs, Katmai & Kodiak
- 51 NEW Exploring the Russian Arctic: Franz Josef Land and the Kara Sea
- 52 Global Perspective Guest Speakers
- 54 Life Aboard
- 56 Dining Aboard
- 58 *National Geographic Explorer*
- 60 *National Geographic Endurance*
- 62 *National Geographic Orion*
- 65 Extensions & Reservation Information

THE ARCTIC: BEST EXPERIENCED UP CLOSE & PERSONALLY

DURING THE 2014 UN CLIMATE CHANGE CONFERENCE, DANISH-ICELANDIC artist Olafur Eliasson and Greenlandic Professor of Geology Minik Rosing (Guest Speaker aboard our 2020 Greenland expedition; details on page 36) presented *Ice Watch*, a glacier ice installation on the famous Place du Panthéon. The artwork displayed 80 tons of ice from a fjord outside of Nuuk, Greenland, aimed to inspire public action against climate change.

The ice blocks were arranged in a clock-shaped circle on the Place, the idea being that they would melt in a short amount of time—offering the audience a tangible image and vivid sense of the impact of climate change on our planet. And the ice did melt—as the diplomats inside negotiated the UN’s historic agreement at the Paris Climate Conference, and *Ice Watch*’s visitors were moved by its beauty and ephemerality. Existing in time and space, *Ice Watch* demonstrated how art enables the translation of abstract emotions into tactile sensations.

We believe that expedition travel can do the same. Choose to explore the Arctic with us this season and you’ll journey through time into the vast and moving spaces of the Arctic, perhaps to see the glaciers from which the bergs of *Ice Watch* were spawned. Certainly to see the pour of water off the ice caps, the moraine veins and deep blues of glacier termini, the pack ice, the welter of floes, and stately drift of the bergs, plus the spectacle of Arctic wildlife—the polar bears, walrus, reindeer, seals, whales from belugas to humpback, even narwhals—and feel yourself inspired if not to hug, then to take back memories and perhaps, even a desire for action.





“ Obviously we all know that ice is cold, and yet holding ice in your hand is a different activity in your brain compared to knowing that ice is cold. So there is a lovely connection, neurologically speaking, between the hand turning cold from touching the ice and knowing that it is cold. You could say there is an embodiment of the knowledge... the guy here [referring to the photo] clearly goes on to say ‘I cannot get enough of connecting my head to my body, I have to hug it.’”

— OLAFUR ELIASSON,
Arctic Imagination,
Royal Danish Library



THE ARCTIC HAS THE MONOPOLY ON MYTHIC AND MYSTERIOUS

ITS KEYWORD IS SUBTLETY, WHICH MAKES EXPLORING THERE SUCH A JOY.

Unlike Antarctica with its vast penguin colonies that require nothing of the explorer but a beach landing, the Arctic rewards a hunter-like patience and persistence. Standing on deck, warm in your layers, eyes trained on the distance as an infinity of pack ice slips by like time, the jubilation you feel when you, or the keenest spotter aboard, ultimately cries “bear!” is exponential. Or you’re hiking across the spare expanse of tundra on Spitsbergen’s coast, thrilled by a simple close encounter with some curious reindeer, expecting nothing more than the sight of seabirds circling overhead—and suddenly a surprise party of beluga whales cruises the beach.

Itineraries, route-lined maps—nature acknowledges neither. Heading out on any of the expeditions detailed on the following pages, as our 50+ years of polar experience has taught us, means always being willing to accept those moments when the Arctic veils or unveils its breathtaking beauty. We may find the opening to a destination fjord blocked by ice. Or a felt-thick fog might settle and slow the ship’s pace to a cautious crawl. And suddenly, like a cape-clad magician, the Arctic will—voilà!—open a lead bristling with narwhal tusks, or send the sun burning through to reveal floes studded with harp seals, as far as the eye can see—a moment of such solemn splendor no one on the entire ship can speak.



THE SKILL AND PASSIONATE
COMMITMENT OF OUR EXPEDITION
TEAM IS ROCK SOLID





THE ARCTIC MAY BE UNPREDICTABLE, ELUSIVE, OR JUST plain capricious, but the skill and passionate commitment of our expedition team is rock solid. Exploring the Arctic requires abilities our outstanding Captains and expeditions leaders (ELs) have in spades: expertise, geographic knowledge, a trove of ice charts and ‘secret’ maps from prior expedition seasons, creativity and sophisticated onboard ice-scanning technology. They’re devoted to getting us in close for extraordinary encounters with beauty, wildness, and the seldom-seen. They will defy the odds, navigating wind, wave, weather, and the vagaries of changing ice patterns to deliver exceptional experiences. And should the Arctic deny us access to a point on an itinerary, they will conjure an opportunity for you that amply rewards your intelligence and curiosity. Our expedition naturalists will do whatever it takes to ensure you unforgettable experiences: manning the spotting scopes 24 hours a day to deliver thrilling wildlife sightings, or standing waist-deep in Arctic water managing a bucking Zodiac to ensure a beach landing. They’re engaging companions, joining you at meals, as well as on walks and Zodiac and kayak forays. And the size and diversity of our expedition team ensures you a variety of specialties and personalities.

“**We had been fogged in for several days and were wondering if we’d ever get to Zodiac cruise or make a landing. Then our EL Peter Wilson informed us that we would be landing on Jan Mayen. I’d never heard of it, but was intrigued by my friends’ excitement. It proved to be an incredible experience. A stunning approach, black sand beach, with brilliant green plants and lichens over rocks. And an amazing history as a Norwegian weather station. Unexpected and very interesting.**”

— MARY MACLELLAN
Guest, Greenland, 2019

- ▶ Find an account of landing at remote Jan Mayen at [expeditions.com/JanMayen](https://www.expeditions.com/JanMayen)

ULTIMATE POLAR EXPEDITION SHIPS & PERFECT PLATFORMS

EXPLORING THE ARCTIC SHOULD BE A PINNACLE EVENT IN

a traveler's life. Our team is committed to doing whatever it takes—and our expedition ships are key, as well, to your unforgettable experience. Each is a top-tier Ice Class vessel, purpose-designed and built, incorporating 50+ years of polar experience for exploring the ice in comfort and safety. They are unparalleled bases for exploration—with acres of glass keeping you constantly connected to the world outside the ship; plus, ample decks and a welcoming Bridge for observing the passing scene and capturing every photo op the Arctic presents. Each ship is equipped with cool tools: a fleet of Zodiacs and kayaks to enable personal, water-level explorations, as well as a Remotely Operated Vehicle to bring back the vibrant undersea life.

Tools for Exploration Travel

In addition to a fleet of expedition landing craft and kayaks, our ships are outfitted with hydrophones to listen to whales and sea lions underwater and a crow's nest camera that offers a bird's eye view of the ship and its surroundings, streamed live to the ship's lounge.





CAPTURE THE MOMENTS AT THE
HEART OF YOUR ARCTIC EXPEDITION



OUR EXPEDITION SHIPS ARE THE ONLY ONES EXPLORING THIS incomparable region with National Geographic photographers aboard every departure. These photographers, many with significant careers to their credit, have enabled countless photographers of all skill levels to take their best photos ever—but more importantly, to advance their storytelling skills to effectively tell their personal expedition story. And these pros are flanked by a Lindblad-National Geographic certified photo instructor, skilled naturalists trained to assist you with camera settings, the basics of composition, the how-tos of wildlife observation, and more, to equip beginners with new skills.



NATIONAL GEOGRAPHIC PHOTOGRAPHERS

This is a hunt, and it requires the eyes, hands, and quick reflexes of a hunter to score photos. Luckily, there's a National Geographic photographer at your side and at your service to help you develop your skills. And since our certified photo instructors are naturalists as well, you'll learn about wildlife behavior as you stalk every photo op.

Some of the National Geographic photographers joining us in 2020 include: Ralph Lee Hopkins, David Wright, Erika Larsen, Sisse Brimberg, Nick Cobbing, Dan Westergren, Alison Wright, Erika Skogg, Jim Richardson, Killii Yuyan, Jeff Kerby, Jay Dickman, Chris Rainier, Matthias Breiter, JJ Kelly, Evgenia Arbugaeva, and Corey Arnold.



EXCLUSIVE ONBOARD GEAR LOCKER

Our partnership with acclaimed retailer B&H Photo Video enables us to offer our guests the opportunity to field test the best new lenses from Sigma, camera bodies from Canon, mirrorless cameras from Olympus and Sony and more during their expedition. Yearning to try some big glass? Looking to research a new camera purchase? Excited to aim binoculars with Swarovski optics on Arctic subjects? Once aboard, listen for announcements that B&H Gear Locker is opening—and dive in with our compliments. Take advantage of our exclusive booked guest B&H discounts pre-trip, too. Ask an Expedition Specialist, or visit expeditions.com/BHPHOTO.



THE ART OF EXPEDITION TRAVEL

SINCE THE BEGINNING OF POLAR EXPLORATION by Western explorers, artists—cartographers, photographers, and painters—have documented expeditions: the icescapes, landscapes, and wonders they discovered. Our Arctic expeditions are no exception. Photographers—guests and pros alike—always accompany our expeditions. And in 2015, Sven Lindblad invited acclaimed young artist **Zaria Forman** to travel to Antarctica aboard *National Geographic Explorer* as the expedition's Artist-in-Residence. Now, Zaria has accepted a new, pioneering role as Curator of *National Geographic Endurance*.

And she has assembled an incredible exhibit called **Change**, featuring 300 works by 40 artists, working in every medium from drawing to video installation, dedicated exclusively to examining and expressing responses to vulnerable polar geographies. Guests aboard the *National Geographic Endurance* inaugural season will be the first to experience this groundbreaking show. Count on having illuminating background material on the artists and their work on your in-suite or cabin tablet, and on being able to take a ship-wide, self-guided tour of the **Change** exhibit.



“MUSIC, LIKE WINE, HAS A TERROIR, REFLECTING THE ENVIRONMENT IN WHICH IT WAS CULTIVATED.”

Locals in Iceland and the northern isles hold fast to tradition and you'll find it infused in many different facets of their culture—from



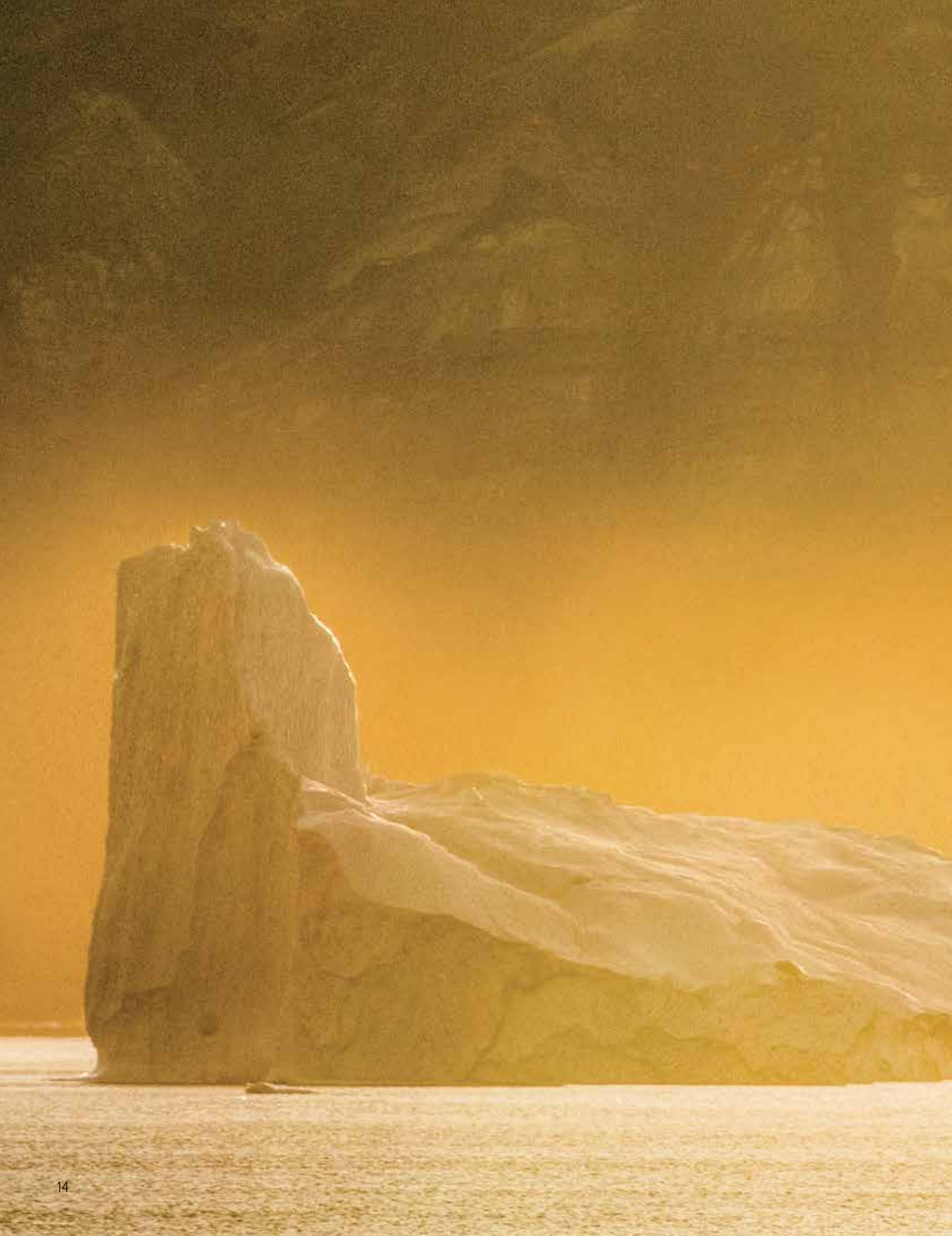
music and dance to daily life. Our ethnomusicologist, **Jacob Edgar** has curated an exceptional line-up of musicians and songwriters whose work will fill your soul with a sense of place,

whether we're visiting tiny hamlets or bustling cities. In the Faroe Islands, you'll observe traditional Faroese chain dancing—animated, theatrical, and medieval in origin—that blends movement, rhythm, storytelling, and song.

BLAZING TRAILS TO CREATE EXTRAORDINARY OPPORTUNITIES FOR OUR GUESTS

Our itineraries are replete with opportunities to meet fascinating people and discover a deeper understanding of both their history and present lives. **Jennifer Kingsley** is a National Geographic Explorer and the Field Correspondent for Lindblad Expeditions. The trails she has blazed in Sisimut and at Pond Inlet—visited on our *Canadian High Arctic* (page 36) and *Fabled Lands* (page 37) itineraries respectively, and subsequently on story missions to the Russian Arctic which we explore in 2020-2021—have created extraordinary opportunities for heartwarming personal encounters for our guests.





SVALBARD & NORWAY

“But from the first to the last the history of polar exploration is a single mighty manifestation of the power of the unknown over the mind of man...nowhere else have we won our way more slowly...and certainly nowhere have the resulting discoveries promised fewer material advantages—and nevertheless, new forces have always been found ready to carry the attack farther, to stretch the limits of the world.”

— FRIDTJOF NANSEN, IN NORTHERN MISTS





Spitsbergen
Longyearbyen
SVALBARD
Edgeøya

Bear Island
Barents Sea

North Cape
Sørøya

Tromsø
Senja

Lofoten Islands

ARCTIC CIRCLE

Fjordlands

Nordfjord
NORWAY
Hardangerfjord
SWEDEN
Hidra

Shetland Islands
Unst
Orkney Islands
Kirkwall
SCOTLAND
Edinburgh

THE SVALBARD-NORWAY REGION JUXTAPOSES SOVEREIGN NATURE & PICTURESQUE CHARM



LAND OF THE ICE BEARS: AN IN-DEPTH EXPLORATION OF ARCTIC SVALBARD

2021: Apr. 26, May 3, 10, 17 | 11 Days/9 Nights
Aboard *National Geographic Endurance*. Page 18

Venture to Arctic Svalbard when there is the greatest potential to see wildlife at its most active. Search for bears hunting in the pack ice; see walrus, reindeer, Arctic fox, and whales. Kayak under the midnight sun, and explore this archipelago's deep fjords and snow-capped mountains over 11 days.



SVAlBARD IN SPRING: POLAR BEARS, ARCTIC LIGHT & EPIC ICE

2020: Apr. 2, 9, 16, 23 | 11 Days/9 Nights
Aboard *National Geographic Endurance*. Page 19

This new 11-day expedition is the inaugural aboard *National Geographic Endurance*. It explores Arctic Svalbard, but timed earlier in the season when bears begin to emerge from their dens to a pristine landscape blanketed in snow and the light is a soft hue perfect for photography.



NORWAY'S FJORDS & ARCTIC SVAlBARD

2020: Apr. 30, May 29; 2021: May 24, Jun. 8 | 17 Days/15 Nights
Aboard *National Geographic Endurance*. Page 20

This 17-day expedition, honed over decades, combines the best of Arctic Svalbard where we search for polar bears, reindeer, and walrus with traveling the length of the iconic coast of Norway where we venture deep into the most picturesque fjords.



NORWEGIAN DISCOVERY: SVAlBARD & THE NORTHERN FJORDS

2021: Jun. 21 | 11 Days/9 Nights
Aboard *National Geographic Endurance*. Page 21

If you don't have the luxury of time for our [Norway's Fjords and Arctic Svalbard](#) expedition, this thrilling 11-day itinerary offers the highlights of Arctic Svalbard's wildlife, and stunning fjords of northern Norway, plus Bear Island, where we Zodiac cruise along cliffs teeming with birds.



NORWEGIAN FJORDS & SCOTTISH ISLES

2020: May 15, 22 | 9 Days/7 Nights
Aboard *National Geographic Endurance*. Page 23

On this compact, 9-day expedition sail across the North Sea in the wake of legendary explorers from Norway's breathtaking southern fjords and snow-dusted mountains to Scotland's rolling green hills, the evocative Shetland Islands, and Orkney's Stone Age sites.



Kayaking is a great way to explore.

LAND OF THE ICE BEARS: AN IN-DEPTH EXPLORATION OF ARCTIC SVALBARD

11 DAYS, 9 NIGHTS | DATES: 2021 APR. 26, MAY 3, 10, 17—ABOARD *NATIONAL GEOGRAPHIC ENDURANCE* CAT. 1 FROM \$11,750 (FOR CURRENT RATES VISIT [EXPEDITIONS.COM/BEAR-RATES](https://www.expeditions.com/bear-rates))



Leaping polar bear.



Reindeer on the Arctic tundra.

EXPEDITION HIGHLIGHTS

Svalbard is a place of deep fjords, snowcapped mountains, **massive sheets of ice, and magnificent polar bears**. Experience the dramatic landscape via naturalist-led walks, and cruise among beautiful icebergs in a Zodiac or a kayak. Be on the lookout for a variety of arctic wildlife from **walrus and reindeer, to arctic fox, whales, and myriad birds**. Take advantage of the legendary midnight sun side-by-side with a National Geographic photographer.

ITINERARY AT A GLANCE

Days 1-2: U.S./Oslo, Norway
Day 3: Oslo/Longyearbyen/Embark
Days 4-8: Exploring Svalbard
Day 9: Longyearbyen/Disembark/Oslo
Days 10-11: Oslo/U.S.



Polar bears walking across the tundra in early spring on Svalbard.

SVALBARD IN SPRING: POLAR BEARS, ARCTIC LIGHT & EPIC ICE

11 DAYS, 9 NIGHTS | DATES: 2020 APR. 2, 9, 16, 23—ABOARD *NATIONAL GEOGRAPHIC ENDURANCE*
CAT. 1 FROM \$11,600 (FOR CURRENT RATES VISIT [EXPEDITIONS.COM/SPRING-RATES](https://www.expeditions.com/spring-rates))



Eric Lindblad standing on the sea ice off the coast of Svalbard.



Svalbard is one of the best places on the planet to see walrus.

EXPEDITION HIGHLIGHTS

Voyage deep into and around the Svalbard Archipelago where Sven Lindblad and his team went on reconnaissance in March 2018. See what they discovered: **Svalbard the way few have**. A true Arctic refuge—**covered in snow, surrounded by sea ice**, where polar bears freed from their winter sleep stalk seals on the ice. Be stunned by the astonishing light, as the **spring sun** mounts ever higher in the Arctic sky each day. And capture it all with ace photographers.

ITINERARY AT A GLANCE

Days 1-2: U.S./Oslo, Norway
Day 3: Oslo/Longyearbyen/Embark
Days 4-9: Svalbard
Day 10: Longyearbyen/Disembark/Oslo
Day 11: Oslo/U.S.



Lofoten archipelago, Norway.

NORWAY'S FJORDS & ARCTIC SVALBARD

17 DAYS, 15 NIGHTS | DATES: 2020 APR. 30*; MAY 29; 2021 MAY 24*; JUN. 8

ABOARD NATIONAL GEOGRAPHIC ENDURANCE

CAT. 1 FROM \$19,420 (FOR CURRENT RATES VISIT [EXPEDITIONS.COM/CAPE-RATES](https://www.expeditions.com/cape-rates)) *These voyages travel in reverse



Polar bear.



Bear Island.

EXPEDITION HIGHLIGHTS

Follow Norway's fjord-carved coast, from the charming town of Bergen, past the North Cape to the ice and wildness of the Svalbard archipelago, for a perfect balance between the charmingly scenic and the spectacularly wild. Explore Tromsø and Bear Island on the way to Svalbard in the high Arctic, where polar bears prowl and walrus haul out on rocky shores. Explore the rare northern fjords, threading the ice-carved narrows and standing on the bow as the captain noses up to glacier termini. Actively explore: hike, walk, and kayak through stunning scenery. Follow the bucket-list-worthy glacially-carved coast.

ITINERARY AT A GLANCE

- Days 1-2: U.S./Bergen, Norway/Embark
- Days 3-6: Exploring the Fjords of Norway
- Days 7-8: Lofoten Islands/Tysfjorden
- Days 9-10: Tromsø/Bear Island
- Days 11-15: Exploring Svalbard
- Days 16-17: Longyearbyen/Disembark/Oslo/U.S.



Guests Zodiac cruising among the immense bird cliffs of Bear Island.

NORWEGIAN DISCOVERY: SVALBARD & THE NORTHERN FJORDS

11 DAYS, 9 NIGHTS | DATE: 2021 JUN. 21—ABOARD *NATIONAL GEOGRAPHIC ENDURANCE*
CAT. 1 FROM \$10,990 (FOR CURRENT RATES VISIT [EXPEDITIONS.COM/NORDISCOVERY-RATES](https://www.expeditions.com/nordiscovery-rates))



Fishing boats, Senja island.



Hiking the beautiful landscapes in Svalbard.

EXPEDITION HIGHLIGHTS

Discover the remote islands and fjords of northern Norway, including the high Arctic archipelago of Svalbard. Spend several remarkable days amid the ice floes of Svalbard and follow nature's rhythms in search of walrus, seals, and polar bears. Continue to **Bear Island** to encounter towering cliffs populated with thousands of seabirds. Then head further south to the spectacular isles of **Sørøya and Senja**, where nature flourishes amid vibrant coastal cultures.

ITINERARY AT A GLANCE

Jun. 21-22:	U.S./Oslo, Norway	Jun. 28:	Sørøya Island
Jun. 23:	Oslo/Longyearbyen	Jun. 29:	Senja Island
Jun. 24-26:	Exploring Svalbard	Jun. 30:	Tromsø/Disembark/Oslo
Jun. 27:	Bjørnøya (Bear Island)	Jul. 1:	Oslo/U.S.





Discover the ancient and mysterious UNESCO World Heritage Site, Ring of Brodgar.

NORWEGIAN FJORDS & SCOTTISH ISLES

9 DAYS, 7 NIGHTS | DATES: 2020 MAY 15, 22*—ABOARD *NATIONAL GEOGRAPHIC ENDURANCE*

*This departure travels in reverse.

CAT. 1 FROM \$7,970 (FOR CURRENT RATES VISIT [EXPEDITIONS.COM/ISLES-RATES](https://www.nationalgeographic.com/expeditions/isles-rates))



Hardangerfjorden.



Skara Brae, Orkney.

EXPEDITION HIGHLIGHTS

National Geographic Endurance follows in the wake of Vikings—traversing a legendary route across the North Sea that takes you past **Norway's** staggering ice-carved fjords and snow-dusted mountains to the dramatic landscapes of the Scottish Isles. Along the way explore an array of remote, ancient sites—Bronze Age ruins on the rugged **Shetland Islands**, the Viking tombs of **Orkney**, the 5,000-year-old settlement of Skara Brae—all juxtaposed against the dynamic, bustling cities of **Bergen** and **Edinburgh**.

ITINERARY AT A GLANCE

Days 1-2	U.S./Bergen, Norway/Embark
Day 3	Hardangerfjorden
Day 4	Hidra/At Sea
Day 5	Shetland Islands, Scotland/Isle Of Noss/Lerwick
Day 6	Unst
Days 7-8	Orkney Islands
Day 9	Disembark/Edinburgh/U.S.





ICELAND & FAROES

Long before the word Viking entered modern English evoking images of pillaging barbarians, in Old Norse, Viking (pronounced Vee-king) simply meant ‘an expedition overseas.’ To ‘Fara I Viking’ (Go a-Viking) was to leave home for an extended period in search of ‘fehu’ or wealth, which for Norsemen was more than just money—‘fehu’ meant adventure, knowledge, and luck.



Grímsey
 Látrabjarg
 Flatey Is.
 Djúpavík
 Dynjandi
 Akureyri
 Húsavík
 Lake Mývatn
 Djúpvogur
 Reykjavík
 Jökulsárlón
 Surtsey Island
 Heimaey Island

Langanes Peninsula ARCTIC CIRCLE

Faroe Islands
 Tórshavn

Shetland Islands

Lerwick
 Orkney

NORWAY
 Bergen

Vega
 Nordfjord
 Lofoten Islands
 Tromsø

Atlantic Ocean

SCOTLAND

SEE LIFE LIVED FAR FROM THE MAIN-STREAM IN ICELAND & THE FAROES



A CIRCUMNAVIGATION OF ICELAND

2020: Jun. 20; Jul. 3, 16, 25; 2021: Jul. 11, 24; Aug. 2
11 Days/9 Nights—Aboard *National Geographic Explorer*.
Page 28

This comprehensive 11-day voyage explores Iceland's geology in all its manifestations—glaciers, thundering waterfalls, immense cliffs, geothermal springs, rock and lava-scapes of unearthly beauty, and its unique cultural heritage and contemporary character.



WILD ICELAND ESCAPE

2020: Jun. 29; Jul. 12; 2021: Jul. 7, 20 | 6 Days/5 Nights
Aboard *National Geographic Explorer*. Page 29

Discover why Iceland is known as the “land of fire and ice” on this 6-day escape to the remote fjords and volcanic isles along the country's western coast. Then customize your adventure by choosing from five inland extensions including heli-hiking, the Blue Lagoon, the Troll Peninsula, and more.



LEGENDARY NORTHERN ISLES: SCOTLAND, FAROES & ICELAND

2020: Jun. 8; 2021: Jun. 26 | 14 Days/12 Nights
Aboard *National Geographic Explorer*. Page 30

Explore Iceland's geological wonders on a near circumnavigation, experience the welcoming culture of the scenic Faroes, discover the verdant landscapes of Scotland with ancient settlements and captivating history over 14 days aboard *National Geographic Explorer*.



COASTAL WONDERS OF NORWAY, THE FAROE ISLANDS & ICELAND

2020: Jun. 18 | 17 Days/15 Nights
Aboard *National Geographic Endurance*. Page 31

Explore all the same sites as our [Legendary Northern Isles](#) expedition, but go aboard the new *National Geographic Endurance*, plus enjoy more time to linger in the breathtaking fjords of Norway on this 17-day expedition.



A couple stand together viewing Godafoss waterfall.

A CIRCUMNAVIGATION OF ICELAND

11 DAYS, 9 NIGHTS | DATES: 2020 JUN. 20; JUL. 3, 16, 25; 2021 JUL. 11, 24; AUG. 2

ABOARD NATIONAL GEOGRAPHIC EXPLORER

CAT. 1 FROM \$11,320 (FOR CURRENT RATES VISIT EXPEDITIONS.COM/ICELAND-RATES)



Zodiac ride by basalt columns at Raudanes.



Blue Lagoon.

EXPEDITION HIGHLIGHTS

Experience an enchanting land of geological extremes on a **circumnavigation of Iceland**. Encounter vast volcanic landscapes on one of the world's youngest islands, walk on lava fields and ice sheets, and feel the power of gushing hot springs and cascading waterfalls. **Cruise into the beautiful, remote Westfjords**, and spend time on the Arctic Circle spotting nesting seabirds. Zodiac cruise into fjords and serene bays, and go hiking on magnificent and remote stretches of the coast. Cap off the adventure with a soak in the famous Blue Lagoon. **Along the voyage, Icelandic experts and musicians will provide local insight and energy to the expedition.**

ITINERARY AT A GLANCE

Day 1:	U.S./Reykjavík, Iceland	Day 7:	Lake Mývatn & Húsavík
Day 2:	Reykjavík/Embark	Day 8:	Exploring Northeast Iceland
Day 3:	Flatey Island/Látrabjarg	Day 9:	Djúpivogur
Day 4:	Exploring Northwestern Iceland	Day 10:	Islands of Heimaey & Surtsey, Westman Islands
Day 5:	Ísafjörður	Day 11:	Reykjavík/Disembark/U.S.
Day 6:	Siglufjörður & Akureyri		



Panoramic of the Strandir Coast; Djúpavík, Westfjords, Iceland.

WILD ICELAND ESCAPE

6 DAYS, 5 NIGHTS | DATES: 2020 JUN. 29; JUL. 12; 2021 JUL. 7, 20

ABOARD NATIONAL GEOGRAPHIC EXPLORER

CAT. 1 FROM \$5,030 (FOR CURRENT RATES VISIT [EXPEDITIONS.COM/ICEESCAPE-RATES](https://www.nationalgeographic.com/expeditions/iceescape-rates))



Puffins.



Djúpavík waterfall.

EXPEDITION HIGHLIGHTS

Discover why Iceland is known as the “land of fire and ice” on an **active voyage** to the remote fjords and volcanic isles along the country’s western coast. Venture across the stark landscape of an island formed by volcanic eruptions, where the ground is still warmed by geothermal activity. Set out by Zodiac to view towering cliffs teeming with nesting seabirds and snow-capped plateaus rising into the clouds. Explore the legacy of Viking explorers and intrepid fishermen as you visit historic villages and navigate dramatic shorelines from the **wild Westfjords region** to the volcanic Westman Islands. **Customize the adventure further by choosing from five optional land extensions.**

ITINERARY AT A GLANCE

Days 1-2: U.S./Reykjavík, Iceland/Embark
Day 3: Djúpavík
Day 4: Arnafjörður & Látrabjarg Cliffs
Day 5: Islands of Surtsey & Heimaey, Westman Islands
Day 6: Reykjavík/Disembark/U.S.



Traditional Faroese turf-roofed homes, Saksun, Faroe Islands.

LEGENDARY NORTHERN ISLES: SCOTLAND, FAROES & ICELAND

14 DAYS, 12 NIGHTS | DATES: 2020 JUN. 8; 2021 JUN. 26—ABOARD *NATIONAL GEOGRAPHIC EXPLORER*
CAT. 1 FROM \$12,970 (FOR CURRENT RATES VISIT EXPEDITIONS.COM/LEGEND-RATES)



Shetland ponies.



Lake Mývatn.

EXPEDITION HIGHLIGHTS

Encounter Shetland ponies roaming verdant landscapes. Go back in time at **Skara Brae**, a 5,000-year-old stone-slab village on Orkney and see the mysterious standing stones of the **Ring of Brodgar**. Walk with a historian through **Jarlishof** archaeological site, a complex of ancient settlements spanning 4,000 years of human history. Meet the welcoming islanders who call the scenic **Faroe Islands** home. Observe incredible birdlife—massive puffin colonies in the Faroes and Grimsey, and on the Cliffs of Noss, thousands of murres and kittiwakes. Experience a **near circumnavigation of the geologic wonders of Iceland**.

ITINERARY AT A GLANCE

Days 1-2:	U.S./Bergen, Norway/ Embark	Day 9:	At Sea/Grimsey
Day 3:	Orkney, Scotland	Day 10:	Lake Mývatn/Akureyri
Day 4:	Shetland	Day 11:	Ísafjörður
Days 5-7:	Exploring the Faroe Islands	Day 12:	Látrabjarg/Flatey Island
Day 8:	Djúpivogur, Iceland	Day 13:	Surtsey & Heimaey, Westman Islands
		Day 14:	Reykjavík/Disembark/U.S.



Cruise through Hardangerfjord, with granite mountain backdrop and glacial falls.

COASTAL WONDERS OF NORWAY, THE FAROE ISLANDS & ICELAND

17 DAYS, 15 NIGHTS | DATE: 2020 JUN. 18—ABOARD *NATIONAL GEOGRAPHIC ENDURANCE*
CAT. 1 FROM \$17,160 (FOR CURRENT RATES VISIT [EXPEDITIONS.COM/FAROES-RATES](https://www.expeditions.com/faroes-rates))



Faroe Islands.



Church on Langanes Peninsula.

EXPEDITION HIGHLIGHTS

Follow the Viking trail on a voyage from Norway to the far-flung islands and archipelagos of the North Atlantic. **Cruise the famed Norwegian fjord lands and the magical Lofoten islands**, explore Stone Age sites in Scotland's Shetland Islands, and come face-to-face with the legacy of the Vikings amid the turf-roofed cottages and ancient sites of the **Faroes**. Then **trace Iceland's most remote shorelines**, witnessing geological wonders from volcanoes to thundering waterfalls.

ITINERARY AT A GLANCE

- Jun. 18-20: U.S./Oslo, Norway/Tromsø/Embark
- Jun. 21-24: Exploring the Norwegian Fjords
- Jun. 25: At Sea/Shetland, Scotland
- Jun. 26: Lerwick/Foula
- Jun. 27-28: Exploring the Faroe Islands
- Jun. 29-30: At Sea/Raudanes or Langanes Peninsulas, Iceland/Grímsey
- Jul. 1-2: Ísafjörður/Flatey Island/Látrabjarg
- Jul. 3: Westman Islands
- Jul. 4: Reykjavík/Disembark/U.S.



GREENLAND & CANADA

In *Ultima Thule*, author Jean Malaurie describes the day, recorded by Captain John Ross, leader of 1818 polar expedition aboard the *Isabella* and *Alexander*, the Inuit entered history:

“On 9 August, the *Isabella* sighted some men through the early morning mists. The ships were in the north-northeast of Melville Bay at latitude 75° 55' north and longitude 65° 32' west, north of Bushnan Island between Savissivik and the headland that Captain Ross would name Cape York, south of Baffin's Cape Dudley Digges. They were on a floe at a distance of seven or eight miles. Could it be the crew of a shipwrecked whaler? It was inconceivable that Polar Eskimos could live at such high latitudes. The ship advanced toward them...as the sun rose higher, visibility improved. Dozens of sailors were posted in the rigging like birds, their eyes trained on the ice. Sacheuse called out to the strange men...they stared intently at the two ships...then gave a simultaneous shout...”



80° NORTH

GREENLAND
(KALAALLIT NUNAAT)

Northeast
Greenland
National Park

PACK ICE
Route dependent
on ice conditions

Scoresbysund
Ittoqqortoormiit

Jan Mayen

Tysfjord
Lofoten Islands
Tromsø

ARCTIC CIRCLE

Saltfjellet-
Svartisen
National Park

Latrabjarg
Flatey Is.

ICELAND
Reykjavik
Westman Islands

NORWAY

Atlantic Ocean

Ellesmere Island

Devon Island

Lancaster Sound

Pond Inlet

Baffin Bay

Baffin Island

Ilulissat

Sisimiut

Kangerlussuaq

Kekerton

Pangnirtung

Davis Strait

Hall Peninsula

Lady Franklin Is.

Lower Savage Is.

Button Is.

Hebron

Indian Harbour

Battle Harbour

L'Anse Aux Meadows

Havre-Saint-Pierre

Îles de la Madeleine

Gros Morne N.P.

St. Johns

Nova Scotia

Baddeck

St.-Pierre & Miquelon (Fr.)
Louisbourg

CANADA

Newfoundland & Labrador

DISCOVERING GREENLAND/CANADA PUTS YOU IN A FABLED LINEAGE OF EXPLORERS



EXPLORING GREENLAND AND THE CANADIAN HIGH ARCTIC

2020: Aug. 6; 2021: Aug. 14
18 Days/16 Nights—Aboard *National Geographic Explorer*. Page 36

Choose this expedition to explore entirely above the Arctic Circle, venturing all the way north to Ellesmere Island where we'll search for polar bears and the elusive narwhal, plus learn about modern Inuit culture and history over 18 days.



FABLED LANDS OF THE NORTH: GREENLAND TO NEWFOUNDLAND

2020: Aug. 20; 2021: Aug. 28
17 Days/15 Nights—Aboard *National Geographic Explorer*. Page 37

Discover the epic ice of the far north, search for a great variety of active wildlife including polar and black bears, muskoxen, and walrus. Be welcomed into Inuit communities, explore Thule archeological sites, and possibly see the Northern Lights over 17 days.



THE CANADIAN MARITIMES & NEWFOUNDLAND

2020: Sep. 5, 13; 2021: Sep. 13
9 Days/8 Nights—Aboard *National Geographic Explorer*. Page 38

Island hop among the oldest settlements of North America for 9 days, including the Viking outpost of L'Anse Aux Meadows and the last French territory in the North Atlantic, plus discover a wild red landscape where the Earth's mantle is laid bare.



ARCTIC EXPLORATION: A VOYAGE TO ICELAND, EAST GREENLAND & NORWAY

2020: Jul. 3 | 17 Days/15 Nights
Aboard *National Geographic Endurance*. Page 39

Explore Norway's fjords, sail high above the Arctic Circle to the seldom-visited Jan Mayen island, and then cut into the pack ice for an in-depth exploration of East Greenland, including the big ice of Scoresbysund, and explore Iceland's wild west coast over 17 days.



EAST GREENLAND: WILD SHORES OF THE HIGH ARCTIC

2021: Sep. 2 | 20 Days/18 Nights
Aboard *National Geographic Endurance*. Page 40

Using the ice-breaking capability of *National Geographic Endurance*, explore the vast Arctic paradise of East Greenland for 20 days, the world's largest national park, an uninhabited region has been only the domain of Inuit hunters before us. Plus, see Norway's fjords and West Iceland.



ICELAND'S WILD WEST COAST TO EAST GREENLAND

2021: Sep. 20 | 13 Days/11 Nights
Aboard *National Geographic Endurance*. Page 41

In 13 days, balance your exploration of West Iceland's modern culture and rolling geothermal marvels with East Greenland's incredible icy landscapes at a time when it may be possible to see the Northern Lights. Search for bears, muskoxen, and more.



Icebergs in the fog at the mouth of the Icefjord near Ilulissat, Greenland.

EXPLORING GREENLAND AND THE CANADIAN HIGH ARCTIC

18 DAYS, 16 NIGHTS | DATES: 2020 AUG. 6; 2021 AUG. 14—ABOARD *NATIONAL GEOGRAPHIC EXPLORER* CAT. 1 FROM \$17,290 (FOR CURRENT RATES VISIT [EXPEDITIONS.COM/HIGHARCTIC-RATES](https://www.expeditions.com/higharctic-rates))



Inuk guide at Thule site just outside Pond Inlet, Mittimatalik, Nunavut, Canada.



Polar bear cubs off Baffin Island.

EXPEDITION HIGHLIGHTS

Venture deep into the far reaches of the Arctic, a land where polar bears roam, whales congregate, and hardy **Inuit communities** maintain their traditional way of life. Aboard *National Geographic Explorer*, trace the rugged fjords of west Greenland and **navigate the mouth of Canada’s legendary Northwest Passage at southern Ellesmere Island**. Spot polar bears on the pack ice, watch for a variety of whales—from minke and fin whales to the **rare narwhal**. Get up close to massive glaciers, and hike the wild islands that dot Canada’s northern shores.

ITINERARY AT A GLANCE

- Days 1-3: U.S./Keflavík, Iceland/Reykjavík/Kangerlussuaq, Greenland/Embark
- Day 4: Sisimiut
- Day 5: At Sea in Baffin Bay
- Days 6-13: Exploring The Canadian High Arctic
- Day 14: At Sea In Baffin Bay
- Day 15: Disko Bay & Ilulissat
- Day 16: Exploring West Greenland
- Days 17-18: Kangerlussuaq/Disembark/Reykjavík/Keflavík/U.S.



Norstead Viking Village, L'Anse aux Meadows.

FABLED LANDS OF THE NORTH: GREENLAND TO NEWFOUNDLAND

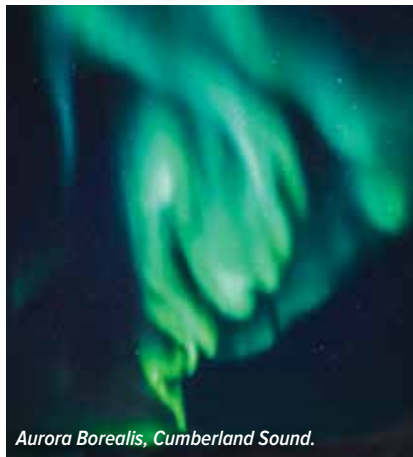
17 DAYS, 15 NIGHTS | DATES: 2020 AUG. 20; 2021 AUG. 28—ABOARD **NATIONAL GEOGRAPHIC EXPLORER**
CAT. 1 FROM \$16,210 (FOR CURRENT RATES VISIT EXPEDITIONS.COM/FABLED-RATES)

SPECIAL OFFER:

Book now and receive **FREE ONE-WAY CHARTER AIR** from Reykjavik to Kangerlussuaq—a \$835 value.



Puppy bred for dogsledding, Sisimiut.



Aurora Borealis, Cumberland Sound.

EXPEDITION HIGHLIGHTS

On this north-to-south expedition, we begin with the spectacular, 100-mile-long Kangerlussuaq Fjord. We'll sail through ice-thronged waters to confront the wondrous **Ilulissat Icefjord** and navigate the Davis Strait to **Baffin Island**. We'll encounter **Inuit culture through artisans** and their traditional crafts and hike the tundra, eyes peeled for **caribou** and Arctic fox. Ranging through the Hudson Strait, we make our way, like the Vikings before us, further south to **Newfoundland and Labrador**, navigating magnificent icebergs.

ITINERARY AT A GLANCE

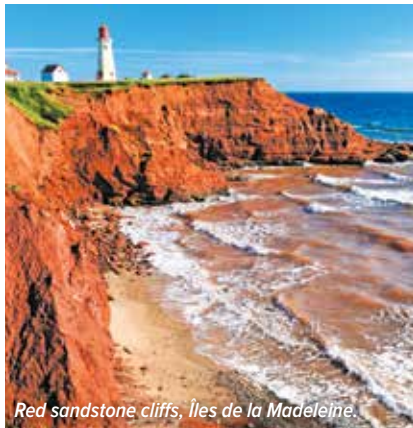
Days 1-3:	U.S./Keflavík, Iceland/ Reykjavík/Kangerlussuaq, Greenland/Embark	Day 8:	Hall Peninsula, Baffin Island
Day 4:	Sisimiut	Day 9:	South Baffin Island
Day 5:	Disko Bay & Ilulissat	Day 10:	Button Islands, Nunavut
Day 6:	At Sea/Davis Strait	Days 11-14:	Exploring The Labrador Coast
Day 7:	Cumberland Peninsula, Baffin Island, Canada	Day 15:	L'Anse aux Meadows
		Day 16:	Northern Newfoundland
		Day 17:	St. John's/Disembark/U.S.



Explore Gros Morne National Park, Newfoundland, a UNESCO World Heritage site.

THE CANADIAN MARITIMES & NEWFOUNDLAND

9 DAYS, 8 NIGHTS | DATES: 2020 SEP. 5, 13; 2021 SEP. 13—ABOARD **NATIONAL GEOGRAPHIC EXPLORER** CAT. 1 FROM \$9,810 (FOR CURRENT RATES VISIT EXPEDITIONS.COM/MARITIMES-RATES)



Red sandstone cliffs, Îles de la Madeleine.



Fishing village outside St. John's, Newfoundland, Canada.

EXPEDITION HIGHLIGHTS

This expedition **circumnavigates Newfoundland** and **visits coastal Québec**, the islands of Cape Breton, St. Pierre (France), and Îles de la Madeleine. We'll sail through The Narrows of St. John's, Newfoundland—along rugged coastlines, the isles of the Gulf of St. Lawrence and Cape Breton Island, **Nova Scotia**. Special highlights include hiking on the nature trails of **Gros Morne National Park**, known for its unique geological features; learning the saga of the Vikings at L'Anse aux Meadows; and visiting the Bell Museum at Baddeck.

ITINERARY AT A GLANCE

- Day 1: U.S./St. John's, Newfoundland & Labrador, Canada/Embark
- Day 2: St. Pierre, France
- Day 3: Louisbourg & Baddeck, Cape Breton Island, Nova Scotia
- Day 4: Îles de la Madeleine, Quebec
- Day 5: Havre-Saint-Pierre, Quebec
- Day 6: Gros Morne National Park
- Day 7: L'Anse aux Meadows
- Day 8: Exploring Eastern Newfoundland
- Day 9: St. John's/Disembark/U.S.



Discover colorful Lofoten, Norway.

ARCTIC EXPLORATION: A VOYAGE TO ICELAND, EAST GREENLAND & NORWAY

17 DAYS, 15 NIGHTS | DATES: 2020 JUL. 3—ABOARD *NATIONAL GEOGRAPHIC ENDURANCE*
CAT. 1 FROM \$17,160 (FOR CURRENT RATES VISIT EXPEDITIONS.COM/ARCTICEX-RATES)



Kayaking in Greenland.



Jan Mayen.

EXPEDITION HIGHLIGHTS

Join us at the height of midsummer in the Arctic, for an **epic journey** from the remote reaches of **Iceland** to the rugged, ice-sculpted shores of **Greenland** and the spectacular fjords of Norway. See incredible nesting sea birds and a myriad of wildflowers in Iceland and **Norway**. Go ashore in the volcanic Westman Islands, then trace the route of legendary Viking explorer Erik the Red to **Greenland’s ice-etched eastern coast, home to the world’s largest fjord system.**

ITINERARY AT A GLANCE

- Jul. 3-4: U.S./Reykjavík, Iceland/Embark
- Jul. 5: Westman Islands
- Jul. 6: Flatey Island/Látrabjarg
- Jul. 7: Exploring Northwestern Iceland
- Jul. 8-12: At Sea/Exploring East Greenland
- Jul. 13-14: Jan Mayen Norway/At Sea
- Jul. 15-17: Exploring the Norwegian Fjords
- Jul. 18-19: Tromsø/Disembark/Oslo/U.S.



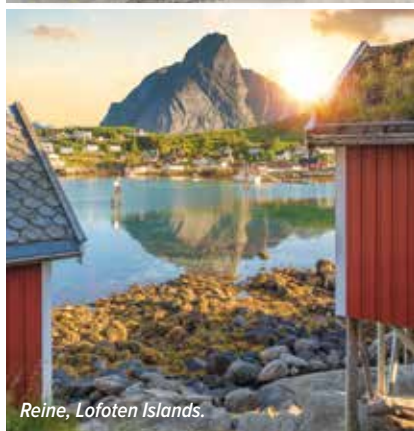
Guests exploring by Zodiac.

EAST GREENLAND: WILD SHORES OF THE HIGH ARCTIC

20 DAYS, 18 NIGHTS | DATE: 2021 SEP. 2—ABOARD *NATIONAL GEOGRAPHIC ENDURANCE*
CAT. 1 FROM \$24,750 (FOR CURRENT RATES VISIT [EXPEDITIONS.COM/GREENLAND-RATES](https://www.expeditions.com/greenland-rates))



Hiking on volcanic ash, Jan Mayen.



Reine, Lofoten Islands.

EXPEDITION HIGHLIGHTS

Immerse yourself in the iconic fjords and islets of the stunning Norwegian coast at **Tysfjord**. Zodiac cruise or kayak along the shores of the Saltfjellet-Svartisen National Park. Cross the sea to go ashore at **seldom-visited Jan Mayen**, a remote island situated partway between Greenland and Norway. Our late summer voyage allows us to dive deep into Greenland's eastern coast to the largest national park in the world—**Northeast Greenland National Park** to spot polar bears, muskoxen, and more. In this remote Arctic paradise where animals outnumber humans, take in dramatic mountain views at every turn.

ITINERARY AT A GLANCE

Sep. 2-3:	U.S./Oslo, Norway	Sep. 11-15:	Exploring Northeast Greenland National Park
Sep. 4:	Oslo/Tromsø/Embark	Sep. 16-18:	East Greenland, Scoresbysund/Exploring
Sep. 5:	Tysfjorden	Sep. 19:	Northwest Iceland
Sep. 6:	Nordfjord/Svartisen	Sep. 20:	Flatey Island/Látrabjarg
Sep. 7:	Lofoten Islands	Sep. 21:	Reykjavík/Disembark/U.S.
Sep. 8-10:	At Sea/Jan Mayen, Norway/At Sea		



Aurora borealis.

ICELAND’S WILD WEST COAST TO EAST GREENLAND

13 DAYS, 11 NIGHTS | DATE: 2021 SEP. 20—ABOARD *NATIONAL GEOGRAPHIC ENDURANCE* CAT. 1 FROM \$13,350 (FOR CURRENT RATES VISIT [EXPEDITIONS.COM/GREENICE-RATES](https://www.expeditions.com/greenice-rates))



Exploring icebergs, Scoresbysund.



Flatey Island.

EXPEDITION HIGHLIGHTS

Discover the wild west coast of Iceland with its dramatic fjords, remote communities, and majestic waterfalls. Explore the largest national park in the world—**Northeast Greenland National Park**—and search for polar bears, muskoxen, whales, and more. Sail into **Scoresbysund**, ice permitting, the world’s largest and longest fjord system and home to a remote Inuit community. Learn how to capture **Northern Lights** displays, conditions permitting, with our National Geographic photographer by your side.

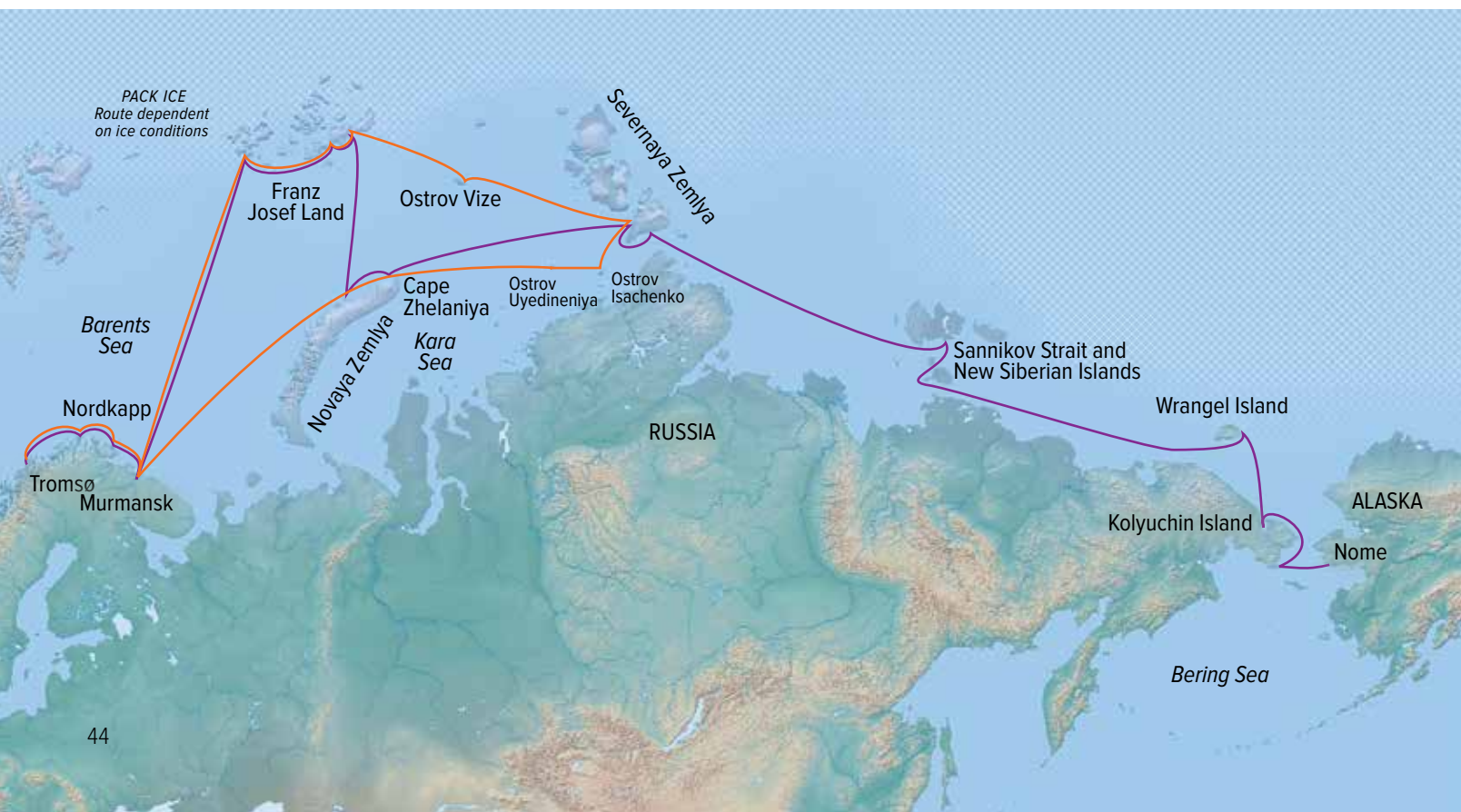
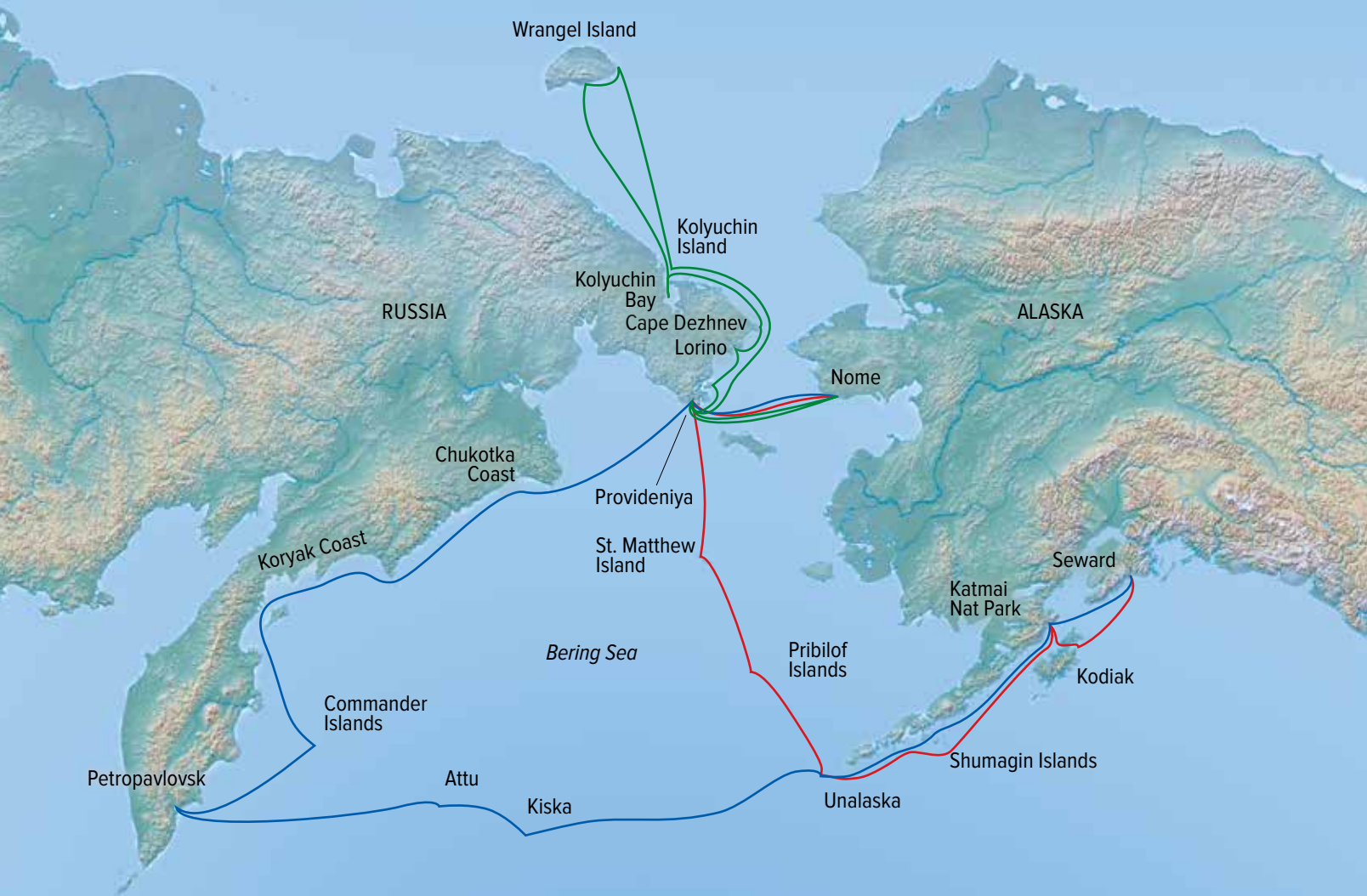
ITINERARY AT A GLANCE

- Sep. 20-21: U.S./Reykjavík, Iceland/Embark
- Sep. 22: Latrabjarg & Flatey Island, Iceland
- Sep. 23: Crossing the Denmark Strait
- Sep. 24-29: Exploring Scoresbysund and NE Greenland
- Sep. 30-Oct. 1: Crossing the Denmark Strait/Exploring the Westfjords, Iceland
- Oct. 2: Reykjavík/Disembark/U.S.



ARCTIC & RUSSIAN FAR EAST

Vitus Johann Bering's sea voyage from Kamchatka to North America precipitated the rush of Russian fur traders to both the Commander and Aleutian islands and eventually to south-central Alaska and northern California—leading to the monopoly in 1779 of the Russian-America company and its rule of Russian America (Alaska) until the sale in 1879 to the U.S. The reported presence of Russia in North America galvanized Spain to extend its settlements from San Diego to San Francisco in California. If expeditions are judged by the extent of the territory and seas explored, and by the subsequent outcomes, Bering's two expeditions—First Kamchatka Expedition 1725-30 and the Great Northern Expedition 1733-43—have rarely been matched in magnitude and consequence in modern world history.



DISCOVER SPLENDID NATURE & INTRIGUING HUMAN HISTORY IN THE RUSSIAN ARCTIC



ACROSS THE BERING SEA: FROM KATMAI TO KAMCHATKA

2020: Jun. 14; Jul. 17; 2021: Jun. 10;
Jul 13 | 22 Days/21 Nights—Aboard
National Geographic Orion. Page 47

Over 22 days explore deep into the Russian Far East's tundra, bays, and volcanic mountains. Learn about a reindeer-herding culture, sail into remote pristine rivers, visit vast and raucous bird colonies, and explore one coast that's home to walrus and three species of seals.



EXPLORING RUSSIA'S FAR EAST & WRANGEL ISLAND

2020: Aug. 7, 19, 31; 2021: Aug. 3,
15, 27 | 13 Days/12 Nights—Aboard
National Geographic Orion. Page 48

Choose this 13-day expedition to focus on the remote Siberian coast and wild Wrangel Island, home to the highest density to ancestral polar bear dens and the world's largest population of Pacific walrus. Hike the tundra of Kolyuchin Island and visit Cape Dezhnev, the furthest point east in Russia.



BERING SEA WILDERNESS: PRIBILOFS, KATMAI & KODIAK

2020: Jul. 5; 2021: Jul. 1
13 Days/12 Nights—Aboard
National Geographic Orion. Page 49

Over 13 days, explore the Pribilof Islands, where fur seals battle. Go south to the Shumagin Islands to hike tundra draped in green and see the scattered remains of a petrified forest. Explore the beautiful Katmai Coast, where you'll see bears digging for clams and wrestling in the beach grass.



NORTHEAST PASSAGE: AN UNFORGETTABLE VOYAGE FROM NORWAY TO ALASKA

2021: Jul. 18; Aug. 11 | 26 Days/25 Nights
Aboard *National Geographic Endurance*. Page 46

This incredibly popular expedition offers the chance to do something so few have—visit the remote and stunning island archipelagos of the Russian High Arctic. Sail in the wake of history's boldest explorer, Adolf Nordenskiöld, and marvel at the abundance of Arctic wildlife.



NEW

EXPLORING THE RUSSIAN ARCTIC: FRANZ JOSEF LAND AND THE KARA SEA

2021: Jun. 28 | 24 Days/23 Nights
Aboard *National Geographic Endurance*. Pages 50-51

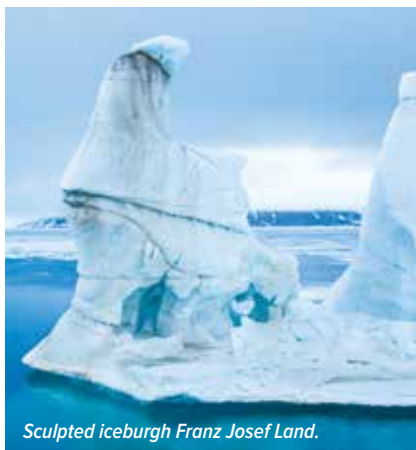
Discover a high Arctic paradise over 24 days in a sea that's frozen most of the year and only navigable aboard our new *National Geographic Endurance*. Explore pristine, remote archipelagos seen by few visitors and home to polar bears, whales, walruses, and seabird colonies.



Polar bears, Wrangel Island.

NORTHEAST PASSAGE: AN UNFORGETTABLE VOYAGE FROM NORWAY TO ALASKA

26 DAYS, 24 NIGHTS | DATES: 2021 JUL. 18; AUG. 11*—ABOARD **NATIONAL GEOGRAPHIC ENDURANCE** CAT. 1 FROM \$36,990 (FOR CURRENT RATES VISIT [EXPEDITIONS.COM/NEPASSAGE-RATES](https://www.expeditions.com/nepassage-rates)) *This departure travels in reverse.



Sculpted icebergh Franz Josef Land.



A curious walrus.

EXPEDITION HIGHLIGHTS

Thrill at remote Siberian shores and far northern archipelagos—including **Franz Josef Land**, **Severnaya Zemlya**, the vast and barely explored **New Siberian Islands**, and **Wrangel Island**—little changed since the days of Nordenskiöld, Amundsen, and intrepid explorers of the last century. Join us as we navigate wind, wave, and weather, slaloming the lines of longitude in search of the wildlife and wonders hidden within this little-known passage.

ITINERARY AT A GLANCE

- | | |
|------------|---|
| Days 1-2: | U.S./Oslo, Norway |
| Day 3: | Oslo/Tromsø/Embark |
| Day 4: | Norway's Fjords |
| Day 5: | Murmansk |
| Days 6-25: | Exploring the Russian High Arctic, Siberian coast, and Russian Far East |
| Day 26: | Disembark/Nome, Alaska/Anchorage/U.S. |



Child in traditional costume, Kamchatka, Russia.

ACROSS THE BERING SEA: FROM KATMAI TO KAMCHATKA

22 DAYS, 21 NIGHTS | DATES: 2020 JUN. 14; JUL. 17; 2021 JUN. 10; JUL. 13

ABOARD NATIONAL GEOGRAPHIC ORION

CAT. 1 FROM \$27,440 (FOR CURRENT RATES VISIT [EXPEDITIONS.COM/KAMCHATKA-RATES](https://www.nationalgeographic.com/expeditions/kamchatka-rates))



Petropavlovsk-Kamchatsky and volcano.



Brown bear, Katmai National Park.

EXPEDITION HIGHLIGHTS

Covering more than 3,800 nautical miles, and **nearly circumnavigating the Bering Sea**, this wide-ranging voyage explores one of the most rugged and wildlife-rich regions of the planet. Spot coastal brown bears in **Katmai National Park** and the **Kamchatka Peninsula**, search for Steller's sea eagles along the scenically stunning **Zhupanova River**, and be awed by the abundance and variety of marine mammals and seabirds from the **Aleutians to the Commander Islands**.

ITINERARY AT A GLANCE

Day 1:	Anchorage, U.S./ Seward/Embark	Days 13-14:	Commander Islands
Days 2-3:	Katmai National Park	Days 15-19:	Exploring the Koryak and Chukotka Coasts
Days 4-5:	At Sea/Unalaska Island	Day 20:	Provideniya
Days 6-10:	Exploring the Aleutian Islands	Day 21:	At Sea, Crossing the Bering Strait
Day 11:	Petropavlovsk Kamchatsky, Russian Federation	Day 22:	Nome, U.S./Disembark/ Anchorage/Home
Day 12:	Zhupanova River		



Polar bears, Wrangel Island.

EXPLORING RUSSIA'S FAR EAST & WRANGEL ISLAND

13 DAYS, 12 NIGHTS | DATES: 2020 AUG. 7, 19, 31; 2021 AUG. 3, 15, 27

ABOARD NATIONAL GEOGRAPHIC ORION

CAT. 1 FROM \$17,500 (FOR CURRENT RATES VISIT EXPEDITIONS.COM/WRANGEL-RATES)



Muskoxen.



Provideniya.

EXPEDITION HIGHLIGHTS

This fascinating exploration of the remote Russian Far East promises **rich culture** and an **astounding wealth of wildlife**. Hike the tundra of **Kolyuchin Island**, a protected region that boasts tremendous wildlife and an abundance of polar bears, and visit Cape Dezhnev, the furthest point east in Russia. Then forge farther north, well above the Arctic Circle to **Wrangel Island Reserve**. Spend several days in this pristine landscape that's **home to a high density of polar bear dens**, the **world's largest population of Pacific walrus**, and a unique variety of plant life.

ITINERARY AT A GLANCE

Day 1:	Anchorage, U.S./ Nome/Embark	Days 5-8:	Wrangel Island
Day 2:	Provideniya, Russian Federation	Days 9-10:	At Sea/Lorino Village
Day 3:	Cape Dezhnev	Day 11:	Provideniya
Day 4:	Kolyuchin Island & Kolyuchin Bay	Day 12:	At Sea/Crossing the Bering Strait
		Day 13:	Nome, U.S./Disembark/ Anchorage/Home



Fur seal rookery, Pribilof Islands.

BERING SEA WILDERNESS: PRIBILOFS, KATMAI & KODIAK

13 DAYS, 12 NIGHTS | DATES: 2020 JUL. 5; 2021 JUL. 1—ABOARD **NATIONAL GEOGRAPHIC ORION**
CAT. 1 FROM \$17,340 (FOR CURRENT RATES VISIT EXPEDITIONS.COM/BERINGSEA-RATES)



Brown bears, Katmai National Park.



Red-legged kittiwakes.

EXPEDITION HIGHLIGHTS

Traverse the depth and breadth of the iconic Bering Sea and venture deep into the two distinct worlds it joins. Encounter the Soviet-era history of Provideniya, “the Gateway to the Arctic,” before exploring the **Pribilof Islands**, a naturalist’s paradise sometimes referred to as “the **Galápagos of the North**.” From those lively breeding grounds continue on to explore the dynamic history, culture, and natural wonders of the remote islands along Alaska’s rugged coast. A visit to **Katmai National Park**, one of the premier brown bear viewing areas in the world and the scattered remains of a unique petrified forest, round out this immersive expedition.

ITINERARY AT A GLANCE

Day 1:	Anchorage, U.S./Nome Embark	Day 9:	Shumagin Islands
Day 2:	At Sea/Crossing the Bering Strait	Day 10:	Katmai National Park
Day 3:	Provideniya, Russian Federation	Day 11:	Kodiak Island
Days 4-6:	At Sea/Pribilof Islands, U.S.	Day 12:	Exploring the Kenai Peninsula
Days 7-8:	Unalaska/Alaska Peninsula	Day 13:	Seward/Disembark/Anchorage/Home





Walrus hauled out, Franz Josef Land.

NEW

EXPLORING THE RUSSIAN ARCTIC: FRANZ JOSEF LAND AND THE KARA SEA

24 DAYS/23 NIGHTS | DATE: 2021 JUN. 28—ABOARD *NATIONAL GEOGRAPHIC ENDURANCE*
CAT. 1 FROM \$26,680 (FOR CURRENT RATES VISIT EXPEDITIONS.COM/FRANZ-RATES)



Russian Orthodox church, Murmansk.



Franz Josef Land.

EXPEDITION HIGHLIGHTS

Sail the icy waters of the Kara Sea, only navigable for a few months of the year. Set foot on the **world's northernmost archipelago, Franz Josef Land**, following in the path of a 2013 expedition by National Geographic's Pristine Seas team. Seek out thriving wildlife—including polar bears, whales, walrus, and seabird colonies—and experience a pristine wilderness reached by few visitors. Explore along the sandy shores of **Ostrov Isachenko, part of Russia's Great Arctic State Nature Reserve**, and search for polar bears. Learn about indigenous culture in Murmansk, Russia, and tour the world's first nuclear-powered icebreaker.

ITINERARY AT A GLANCE

Days 1-3:	U.S./Oslo, Norway/ Tromsø/Embark	Days 13-15:	Severnaya Zemlya
Day 4:	Norway's Fjords	Days 16-19:	Franz Josef Land
Day 5:	Murmansk, Russia	Day 20:	At Sea
Days 6-7:	At Sea	Day 21:	Murmansk
Days 8-10:	Novaya Zemlya	Day 22:	Norway's Fjords
Days 11-12:	Exploring the Kara Sea	Days 23-24:	Tromsø/Disembark/ Oslo/U.S.

ENJOY EXTRAORDINARY EXPERIENCES— WITH EXTRAORDINARY PEOPLE

NOT ONLY WILL YOU BENEFIT FROM INFORMATIVE TALKS AND PRESENTATIONS BY our expedition team and Global Perspectives Guest Speakers, but you'll also share daily adventures, and spend time together over dinner and drinks. The company of these individuals, from the top tiers of science, exploration, and journalism, will immeasurably enrich your Arctic experience. See who's on the voyages that interest you, and find more details at expeditions.com/perspectives.



PETER HILLARY

Peter Hillary landed an aircraft at the North Pole with Buzz Aldrin and established a new route to the South Pole. Like his father, the late Sir Edmund Hillary, he has climbed Mount Everest and many other peaks.

[Coastal Wonders of Norway, The Faroe Islands & Iceland](#), June 18, *National Geographic Endurance*

[Arctic Exploration: A Voyage to Iceland, East Greenland & Norway](#), July 3, *National Geographic Endurance*



PATRICK WALLACE

An archeologist and expert on Viking history, Dr. Patrick Wallace served as director of the National Museum of Ireland for 23 years. In Dublin, he oversaw the largest Viking age urban excavation in Europe.

[Norwegian Fjords & Scottish Isles](#), May 15 & 22, *National Geographic Endurance*



KATHRYN SULLIVAN

Geologist, NOAA scientist, and NASA astronaut, Dr. Kathryn Sullivan has had a storied career that has taken her from the far reaches of outer space to the bottom of the world's oceans.

[Arctic Exploration: A Voyage to Iceland, East Greenland & Norway](#), August 31, *National Geographic Endurance*



TIM SEVERIN

Explorer, historian, and writer, Tim Severin has recreated many of history's most daring voyages to test their feasibility including sailing a leather boat across the Atlantic and an Arab ship from Muscat to China.

[Legendary Northern Isles: Scotland, Faroes & Iceland](#), June 8, *National Geographic Explorer*



MINIK ROSING

Geology professor Minik Rosing has united science and art in reading history in rocks and ice. In the early 2000s Minik Rosing discovered evidence of photosynthesis occurring 3.7 billion years ago, refocusing the narrative of the earliest lifeforms.

[Exploring Greenland and the Canadian High Arctic](#), August 6, *National Geographic Explorer*



CARL SAFINA

Conservationist and writer Carl Safina spent a decade working to ban high-seas drift nets and to overhaul U.S. fishing policy. Recipient of a MacArthur "Genius Grant," he now writes mainly about the human relationship with the natural world.

[Fabled Lands of the North: Greenland to Newfoundland](#), August 20, *National Geographic Explorer*



LUXURY OF COMFORT IN RUGGED WILDNESS

OUR THREE POLAR SHIPS, THE FINEST BASECAMPS AN explorer could want, are equipped for up-close and personal explorations—and for living well. The lounge, dining room, and other public spaces on our ships provide space for individuals, families and friends, and the entire community—contributing to the esprit de corps that is a hallmark of our expeditions. A library serves those who want to learn more about the region or curl up with a best seller. The observation lounge is a fine spot to gather for a light meal or to watch petrels soar overhead as we sail. And a fully-stocked bar is a place to relax or engage with fellow travelers. The wellness center, gym, sauna, and stretching or yoga sessions with our wellness specialist boost the tonic of wildness nature provides. And cossetting cabins and suites, outfitted with our signature linens and feather duvets, provide the perfect ending to active days.

“ I have no complaints about being out on a Zodiac foray in a light mist and low temps—that’s what I signed up for, and I was loving the photos ops. But I have to say, when that Zodiac full of Viking-helmeted hotel staff rounded the bend with hot chocolate, Aquavit and schnapps, I said ‘hallelujah.’ The service aboard is outstanding; having that service follow you into the field—that’s priceless.”

— KEITH CALANDRO
Guest, Greenland 2018





TRUE TASTES OF THE ARCTIC





THE APPROACH TO DINING ON OUR FLEET OF ships is innovative and adventurous. Immerse yourself in your voyage by way of taste and gastronomic experiences. In keeping with the spirit of sustainability and self-reliance that dominates the region, meals feature extraordinary examples of Arctic cuisine.

Imagine a traditional breakfast of Brunost, a dense caramelized goat's milk cheese, thinly sliced over rye toast, or Filmjök, a Nordic fermented dairy product much like Greek yogurt, served with crisp waffles and preserved

cloudberries or sea buckthorn, hand-picked from the high Arctic mountains. Dinner features local specialties—think reindeer casserole or stew, flavored with juniper berries and rosemary, and filled with hearty root vegetables, mushrooms, and cream. “At dinner, it’s served with potato purée and lingonberry,” explains Sara Henstam, chef of the *National Geographic Explorer*, “but for afternoon tea, I serve it in soft flat, thin bread. The guests really love it.” All are paired with our wine steward’s choice of European wines, or beer, including local selections.



NATIONAL GEOGRAPHIC EXPLORER

CAPACITY: 148 guests in 81 outside cabins.

REGISTRY: Bahamas. Overall Length: 367 feet.

National Geographic Explorer is a state-of-the-art expedition ship, fully stabilized, ice-class vessel, with an ice-reinforced hull, enabling it to navigate polar passages while providing exceptional comfort. It carries kayaks and a fleet of Zodiac landing craft. An undersea specialist operates a Remotely Operated Vehicle (ROV) and sophisticated video equipment, extending access to the underwater world.

PUBLIC AREAS: Bistro bar; chart room; restaurant; global gallery; library, lounge with full service bar and state-of-the-art facilities for films, slideshows and presentations; mudroom with lockers for expedition gear, and observation lounge. Our “open bridge” provides guests an opportunity to meet our officers and captain and learn about navigation.

MEALS: Served in single seatings with unassigned tables for an informal atmosphere and easy mingling. Menu is international with local flair.

CABINS: All cabins face outside with windows or portholes, private facilities and climate controls. Some cabins have balconies. Cabins are equipped with Ethernet and Wi-Fi connections and USB ports for mobile devices.

EXPEDITION EQUIPMENT: Zodiac landing craft, kayaks, Remotely Operated Vehicle (ROV), hydrophone, splash-cam, underwater video camera, aerial remote controlled camera and video microscope.

SPECIAL FEATURES: A full-time doctor, undersea specialist, National Geographic photographer, Lindblad-National Geographic certified photo instructor and video chronicler, internet café and laundry.

WELLNESS: The vessel is staffed by a wellness specialist and features a glass-enclosed fitness center, outdoor stretching area, a LEXspa treatment room and sauna.

CATEGORY 1: Main Deck with one or two portholes #301-308

CATEGORY 2: Main Deck with window #317-320, 335-336

CATEGORY 3: Main Deck with window #313-316, 321-328, 337-340, 342, 344, 346, 348, 350

CATEGORY 4: Upper and Veranda Decks with window #103-104, 107-108, 201-202, 204-207, 210, 212, 217, 226, 228

CATEGORY 5: Upper Deck with balcony #209, 211, 214, 216, 218, 220-222, 224

CATEGORY 6: Veranda Deck–Suite #101-102; Upper Deck–Suite with balcony #213

CATEGORY 7: Upper Deck–Suite with balcony #215, 219, 230

CATEGORY A SOLO: Main Deck with window #309-312, 329-334

CATEGORY B SOLO: Upper and Veranda Decks with window #105-106, 203, 208

CATEGORY 3 TRIPLE: Main Deck with window #341, 343

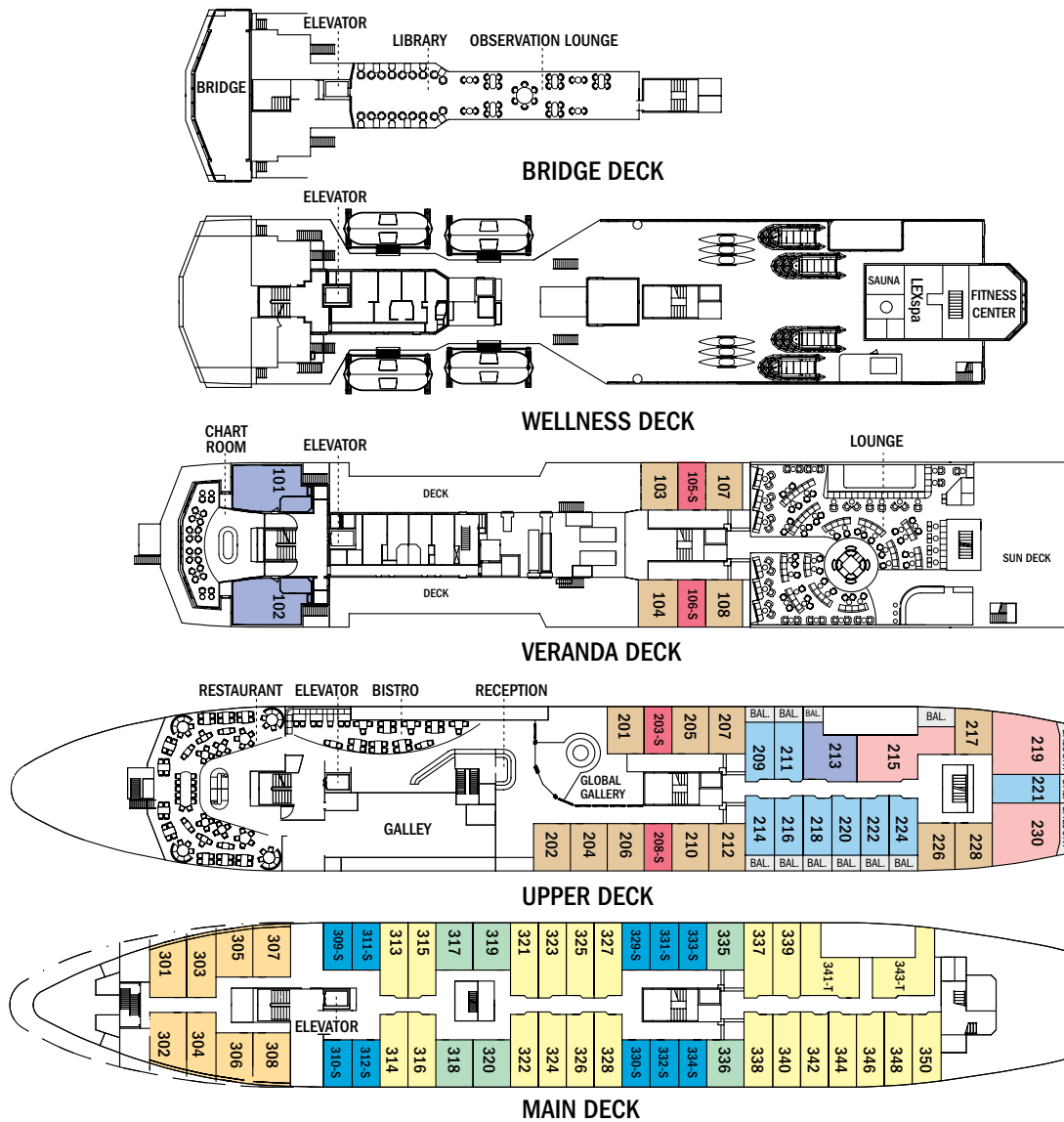
Shared accommodations: Available in Categories 1 and 2.

SOLE OCCUPANCY: Cabins available in Categories A and B.

Note: Cabins #209, 211, 214, 216-218, 220, 222, 224, 226, 228, 303-306—These cabins have one queen-sized bed. All other double cabins have two lower single beds; some can convert to a queen-sized bed. Third person rates are available in the designated triple occupancy cabins at one-half the double occupancy rate. Cabins #341, 343, 101, 102, 215, 219 and 230 can accommodate a third person.



Left to right: Dining is completely casual with no assigned seating; National Geographic Explorer; relax in the spa; Category 7 suite; Upper Deck cabin with balcony; standard bathroom.





NATIONAL GEOGRAPHIC ENDURANCE

CAPACITY: 126 guests in 69 outside cabins.

REGISTRY: Bahamas. Overall Length: 406 feet.

National Geographic Endurance is a next-generation expedition ship, purpose-built for polar navigation. A fully stabilized, highly strengthened, iceclass Polar Code PC5 (Category A) vessel, it is designed to navigate polar passages year-round, and safely explore uncharted waters, while providing exceptional comfort. Its patented X-Bow® is key to its design; its powerful wave-slicing action provides an extremely smooth ride in even adverse conditions, and even reduces spray on deck, for superior observation. She carries a full suite of expedition tools (below), and offers a variety of experience enhancing amenities.

PUBLIC AREAS: Two restaurants, a Chef's Table for small group dining, Observation Lounge with bar, yoga studio, gym, Wellness area, infinity-style outdoor hot tubs, library with fireplace, main lounge with full service bar, 24-hour beverage station, state-of-the-art facilities for films, slide-shows and presentations, and a photo workshop area; plus, an expedition base with lockers for expedition gear, and an "open bridge" for access to our captain, officers and the art of navigation.

MEALS: Two restaurants, featuring local, sustainable choices and unassigned seating for flexible, inclusive dining; plus a Chef's Table for intimate, small group dining.

Main restaurant has 270° views, and C. Green's restaurant features lighter, grilled and healthy choices.

CABINS: All cabins face outside with large windows, private facilities and climate controls. 53 cabins have balconies. Cabins are equipped with expedition command centers with tablets and USB/mobile device docking, TVs, Wi-Fi connections, and hair dryers.

EXPEDITION TOOLS: Zodiac landing craft, kayaks, snowshoes, cross-country skis, undersea specialist operating a Remotely Operated Vehicle (ROV) and underwater video camera for unique access to polar marine world, hydrophone, aerial remote-controlled camera and video microscope.

SPECIAL FEATURES: A full-time doctor, undersea specialist, National Geographic photographer, Lindblad-National Geographic certified photo instructor and video chronicler, and laundry.

WELLNESS: The vessel is staffed by our wellness specialists and features a glass-enclosed yoga studio, gym, treatment rooms and spa relax area, and high- and low-heat saunas with ocean views.



Left to right (artist's renderings): the Ice Lounge is the expedition community hub for recap, presentations and sociability; National Geographic Endurance; twin saunas, one for adepts at a classic temperature, the other less hot for cooler types, boast glass walls for soaking in million-dollar views; Suite with balcony; standard cabin; standard bath.

CATEGORY 1: Fore Deck—Standard cabin with two large windows, alcove seating, relax chair 183 square ft. #406, 408, 411, 413, 415

CATEGORY 2: Fore Deck—Standard cabin with two large windows, Alcove seating, Relax chair 205 square ft. #410, 412, 414, 416-419, 421-427

CATEGORY 3: Main Deck—Standard Balcony cabin with balcony and sofa 205 square ft. #512-524

CATEGORY 4: Lounge Deck—Standard Balcony cabin with balcony and sofa 205 square ft. #608, 610, 612, 613-623

CATEGORY 5: Bridge Deck—Standard Balcony cabin with balcony and sofa 205 square ft. #708, 709, 711, 713

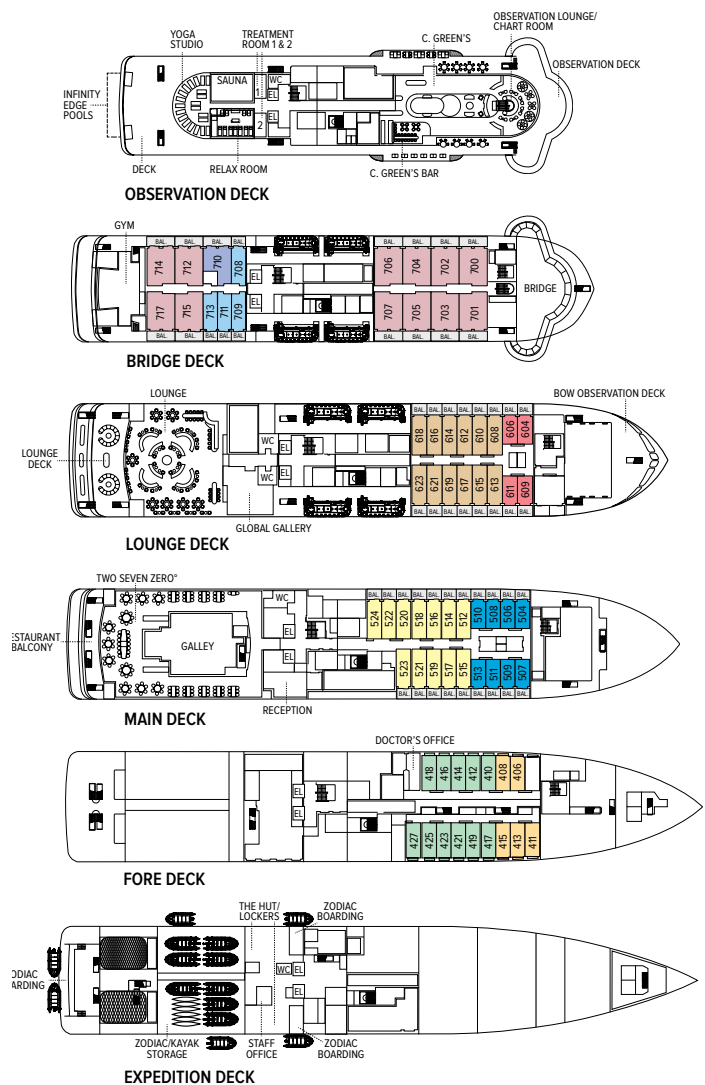
CATEGORY 6: Bridge Deck—Junior Balcony Suite with large balcony, sofa bed 344 square ft. #710

CATEGORY 7: Bridge Deck—Large Balcony Suite with large balcony, sofa bed, bathtub, walk-in closet 430 square ft. #700-707, 712, 714-717

CATEGORY A SOLO: Main Deck—Standard Balcony cabin with balcony and sofa 140 square ft. #504-510, 513

CATEGORY B SOLO: Lounge Deck—Standard Balcony cabin with balcony and sofa 140 square ft. #604, 606, 609, 611

All cabins have: Ability to set up as Queen or two Twins, Command Center with docking for multiple devices, atlas, clock, barometer, TV, phone, digital tablet for onboard info, hair dryer, safe, refrigerator.





NATIONAL GEOGRAPHIC ORION

CAPACITY: 102 guests in 53 outside cabins.
REGISTRY: Bahamas. **OVERALL LENGTH:** 338 feet.

The state-of-the-art *National Geographic Orion* is a fully stabilized, ice-class vessel with an ice reinforced hull. *National Geographic Orion* is at home navigating polar ice, as well as island harbors in the South Pacific.

PUBLIC AREAS: Outdoor café, lounge with bar and state-of-the-art facilities, restaurant, sundeck, reception desk, observation lounge and library, global gallery, and marina platform. The whirlpool hot tub doubles as a plunge pool in warm climates. Our “open bridge” allows guests to meet our captain and officers and learn about navigation.

MEALS: All meals are served in a single seating with unassigned tables for an informal atmosphere and easy mingling. The cuisine is international with local flair, featuring tastes of the regions we explore.

CABINS: All cabins feature ocean views, private facilities, climate controls, and a flat-screen TV. Equipped with Ethernet and Wi-Fi connections and USB ports for mobile devices. Some cabins have French balconies. Single cabins in Category 1 and Category 3 include #301, 322, 323, and 512.

EXPEDITION EQUIPMENT: Zodiac landing craft, a fleet of 24 double kayaks, a crow’s nest camera, a hydrophone, underwater video cameras, video microscope, and a Remotely Operated Vehicle (ROV).

SPECIAL FEATURES: Laundry, a full-time doctor, National Geographic photographer and Lindblad-National Geographic certified photo instructor, plus an undersea specialist and video chronicler.

WELLNESS: A wellness specialist, fitness center, LEXspa treatment room and sauna are on board.

CATEGORY 1: Main Deck with oval window #316, 318, 319-321

CATEGORY 2: Main Deck with oval window #302-312, 314, 315, 317

CATEGORY 3: Upper Deck—Suite with window #401-412, 414-419

CATEGORY 4: Bridge Deck—Deluxe suite with window #511, 515

CATEGORY 5: Bridge Deck—Suite with French balcony #501, 503-506, 508

CATEGORY 6: Bridge Deck—Owner’s suite with French balcony #502, 507, 509*, 510

*Cabin 509 has two windows in lieu of a French balcony.

CATEGORY 1 SOLO: Main Deck with oval window or two portholes #301, 322, 323

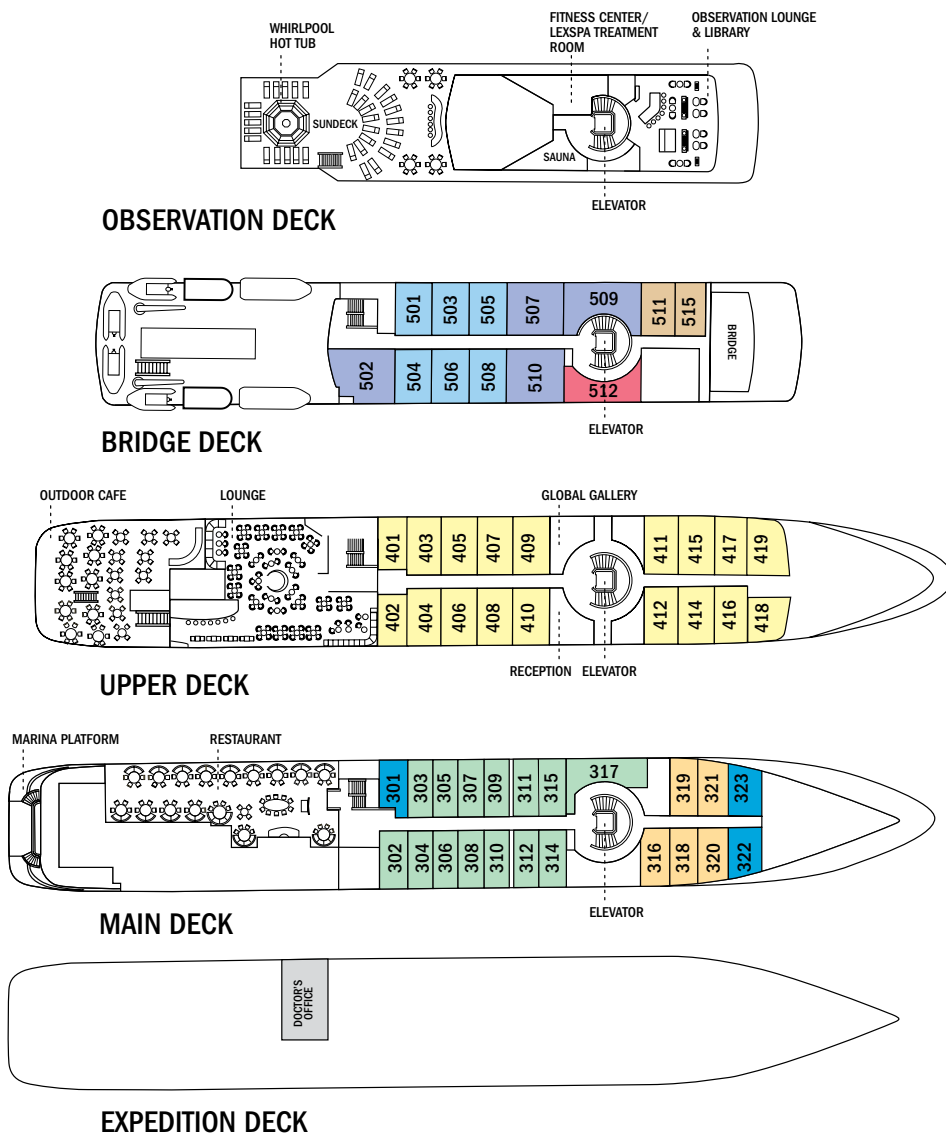
CATEGORY 3 SOLO: Bridge Deck—Suite with two windows #512

Note: Sole occupancy cabins available in Categories 1 and 3. Shared accommodations available in Categories 1 and 2.

Note: Third person rates available at one-half the double occupancy rate in designated triple occupancy cabins.



Left to right: Main lounge; National Geographic Orion; our hotel staff will do whatever it takes to ensure your comfort and satisfaction aboard; National Geographic Orion dining room features no assigned seating for casual, easy mingling; Category 3 suite with window; Category 6 Owner's suite with French balcony.



NEW! ARCTIC PARKA INAUGURAL EDITION

In honor of the *National Geographic Endurance* Inaugural we will offer our first-ever Arctic parka. Based on our coveted Antarctica parka, a combination of vintage design and contemporary hi-tech manufacture for maximum polar functionality, our 2020 Arctic parka will be blue, incorporate design updates, and feature a Limited Edition Inaugural embroidered patch on the sleeve.



Based on the design of our orange Antarctica parka, with its separate café jacket for as-desired layering, our new blue Arctic parka offers warmth and the convenience of onboard delivery. The 2020 design features a Limited Edition patch commemorating the National Geographic Endurance launch.

INCLUSIVE PRICING

We include just about everything you have the opportunity to do as part of your expedition aboard ship and ashore—plus, we cover tips for the crew. The only things not included are those of a personal nature—internet usage, wellness treatments, and other specialized arrangements.

ABOARD SHIP

- ✓ Tips for the crew
- ✓ All meals and beverages*
- ✓ Cappuccinos, lattes & complimentary refillable water bottle
- ✓ 24-hour coffee, tea, and soda on demand
- ✓ Hors d'oeuvres and snacks during lounge recap
- ✓ Sauna
- ✓ Fitness center
- ✓ Fully stocked library
- ✓ The guidance and company of our expedition staff

ASHORE

- ✓ Meals on land, as indicated in itinerary
- ✓ Special access permits, park fees, and port taxes
- ✓ Transfers to and from group flights
- ✓ The expertise of our expedition staff

ACTIVITIES

- ✓ All excursions
- ✓ Zodiac and kayak explorations
- ✓ Paddleboarding (where indicated)
- ✓ Lectures and presentations in the lounge

Note: Note: Amenities vary across fleet, and are provided where applicable.

**All departures aboard National Geographic Endurance, National Geographic Explorer, and National Geographic Orion include alcoholic beverages aboard ship excepting certain super-premium brands of alcohol.*

Photo Credits: Stewart Cohen, David Cothran, Sisse Brimberg & Cotton Coulson, Adam Cropp, Simon Dannhauer, Danita Delimont/Alamy, Ryan Gemmola/Alamy, Bennett Goldberg, Mike Greenfeder, Eric Guth, Ralph Lee Hopkins, Johner Images/Alamy, Istock, Arvind Jayashankar, Ivan Kmit/Alamy, Albert Knapp/Alamy, Sven-Olof Lindblad, Michael Luppino, Olga Miltsova/Alamy, Emily Mount, Joanne Moyes/Alamy, Louise Murray/Alamy, Michael S. Nolan, Andrew Peacock, Marco Ricca, Vipula Samarakoon/Alamy, Kevin Schafer, Susan Seubert, Shutterstock, Erika Skogg, Michel & Gabrielle Therin-Weise/Alamy, Paul Williams/Alamy, David Vargas, Barbara Vasquez, Craig Wilson.

BE PART OF OUR EXPEDITION COMMUNITY

Join in! Here's how:

- Check our daily blog for interesting posts, video clips and Photos of The Week: expeditions.com/blog
- Like us on Facebook: hear what our travelers have to say, get inspired and chime in: facebook.com/LindbladExpeditions
- Preview an expedition before you go or subscribe to our videos on youtube.com/lindbladexpeditions
- Follow us [@LindbladExp](https://twitter.com/LindbladExp) and our founder, Sven Lindblad [@SvenLEX](https://twitter.com/SvenLEX), on Twitter; and on Instagram [@SOLindblad](https://instagram.com/SOLindblad) for his interesting view of the world.
- Check out Expedition Snapshots from guests—and upload your own on the expeditions.com homepage.





MAKE THE MOST OF YOUR TIME IN THE REGION—EXPLORE MORE, IT'S SEAMLESS

From Glacier Heli-hiking in Iceland, allowing time to soak in the Blue Lagoon, to an unforgettable stay on Newfoundland at the five-star Fogo Island Inn, every itinerary in this brochure offers you interesting ways to make the most of your travel by extending your adventure.

▶ To learn more, visit expeditions.com, find the itinerary that interests you & click on Extensions.

RESERVATION INFORMATION

Terms & Conditions: For complete terms and conditions please visit expeditions.com/terms

Pricing: For best pricing book early. Prices quoted in this brochure are valid as of the time of printing, are subject to modification, and are not guaranteed until booking and required deposit is made. Visit expeditions.com or call for the most up-to-date pricing.

Pricing Includes: All accommodations aboard ship or in hotels per itinerary or similar; all meals and beverages* aboard ship; meals on land as indicated accompanied by nonalcoholic beverages; air transportation where indicated as included; shore excursions; sightseeing and entrance fees; special access permits; transfers to and from group flights; use of kayaks (where available); use of cross-country skis or snowshoes (where available); tips (including to ship's crew); taxes and service charges; services of a ship physician and services of our expedition staff. Unused services or items included in our programs are non-refundable. *All departures aboard *National Geographic Endurance*, *National Geographic Explorer*, and *National Geographic Orion* include alcoholic beverages aboard ship, excepting certain super-premium brands.

Not Included: Air transportation (except where shown as included), extensions, passport, visa, immigration fees, meals not indicated, travel protection plan, items of a personal nature, such as internet access, voyage chronicle, laundry.

Airfare: For all programs, airfare is an additional cost unless otherwise indicated. We will gladly assist in making your air arrangements for a \$50 per person service fee.

Reservations: To reserve your place, an advance payment is required at the time of reservation.

Final Payment: For expeditions aboard *National Geographic Endurance*, *National Geographic Explorer*, and *National Geographic Orion*, payment is due 120 days prior to departure.

Payment schedules may vary for certain longer voyages, due to high demand for these voyages. We reserve the right to cancel your reservation if payment has not been received by final payment due date.

Travel Protection Plan: We strongly recommend that you take advantage of our Travel Protection Plan. This plan offers comprehensive coverage to protect you from cancellation fees, costs incurred due to trip delays/interruption, medical assistance, and damaged or lost baggage, and provides medical assistance and evacuation during your travels. Our Travel Protection Plan is available for U.S. and Canadian residents only, and may be purchased any time prior to final payment due date. If you are not satisfied for any reason, you may return your plan within 10 days after purchase. Your premium will be refunded if canceled within 10 days, provided you have not already departed on the

trip or filed a claim. When so returned, the coverage under the plan is void from the original date of purchase.

Responsibility and Other Terms & Conditions: Certain provisions concerning, among other things, limitations of Lindblad Expeditions' and the National Geographic Society's liability for loss of property, injury, illness or death during the voyage will be provided to all guests on the ship's ticket sent prior to departure, and are also available on our website at expeditions.com/terms, or upon request. By registering for a trip, the guest agrees to all such terms and conditions.

Note: Itineraries and prices listed in this brochure are as of publication date and are subject to change. Under normal conditions the total expedition price is guaranteed at the time of booking. However, our expedition pricing is determined far in advance of initial departure on the basis of then-existing projections of fuel and other costs. In the event of increases in those costs, including but not limited to increases in the price of fuel, currency fluctuations, increases in government taxes or levies, or increased security costs, we reserve the right to adjust the price of your expedition or add a surcharge to cover such unexpected increases. We will always provide an explanation of the reason for increase in pricing.

Cancellation Policy: Cancellation penalties may apply after payment is received. Please visit expeditions.com/terms for complete cancellation policies.

©2019 Lindblad Expeditions

Lindblad Expeditions and the Eye are the trademarks of Lindblad Expeditions. All rights reserved.

NATIONAL GEOGRAPHIC and the Yellow Border are the trademarks of the National Geographic Society. All rights reserved.

For Reservations:

Contact your travel advisor or Lindblad Expeditions
1.800.EXPEDITION (1.800.397.3348)

Reservation Hours: Monday – Friday 9am – 9pm ET

Saturday & Sunday 10am – 5pm ET

Lindblad Expeditions, Inc., 96 Morton Street, New York, NY 10014

Phone: 212.261.9000 • Fax: 212.265.3770

For additional information and online reservations,
visit us at: expeditions.com

Account Number:



1.800.EXPEDITION | WWW.EXPEDITIONS.COM

 Printed on 10% recycled content paper with soy-based inks. We recommend that you pass this along for others to enjoy or recycle.

ARC-119

NEW FOR 2021!

FRANZ JOSEF LAND AND THE KARA SEA

See page 51 for details.

