

# THE SEA OF CORTEZ

NORTH AMERICA'S  
BEST-KEPT SECRET

WILD ENCOUNTERS  
WITH FRIENDLY  
GRAY WHALES

**PLUS**  
SPECIAL  
OFFERS



ABOARD THE NATIONAL GEOGRAPHIC SEA BIRD & SEA LION | 2017-18



Lindblad  
Expeditions



NATIONAL  
GEOGRAPHIC™



1



2



3

- 1. Exploring the island of Isla Santa Catalina.
- 2. Watching a breaching humpback whale from the National Geographic Sea Lion.
- 3. A new, vibrant frigatebird colony, only a couple of years old.
- 4. Fellow guests spotting whales from the ship.
- 5. Giant barrel cactus on Isla Santa Catalina.
- 6. Guests enjoying an expedition landing craft cruise around Isla San Jose.
- 7. A leaping dolphin. Hundreds can sometimes be seen at a time.



7



6



DEAR TRAVELER,

It had been over 20 years since I last visited Baja California with my father, so when I got a chance to join our guests aboard *National Geographic Sea Bird* this past New Year's holiday, I jumped at it. For a long time I vividly remembered the colors, smells, and sights from the Sea of Cortez, but they had been slowly fading as each year passed. It was time to get back and get a shot of the tonic of wildness that Baja California and the incredible Sea of Cortez provide in spades.



Over the course of our seven-night expedition, I had the opportunity to do all of the things that I remembered loving so much. Swimming with the most playful sea lions in the world at Los Islotes made an impression on me when I was a kid, and it was just as much fun now. I remember experiencing the cactus forests with wonder back then, and finding them even more fantastical as an adult. Running up the dry and boulder-filled arroyos by day; being cupped by wind-carved sandstone cliffs at a beach barbecue at night. Spotting Humpback whales, watching with all the other guests out on the ship's bow, seeing them breaching, so obviously enjoying the warm sea before resuming their long migration to colder waters. And, devouring the most delicious Mexican ice-cream in La Paz.

Maybe it was simply because I was no longer a kid, but I was cognizant of the fact that I may have to wait another long period of time to return, that vacation time is limited, precious, and that I needed to make the most of it. Whatever it was, this time I opened my eyes wider, listened to our naturalists more closely, and truly savored every minute. With that came a whole new love for this geography, that has held such a special place in my heart from my first visit years ago.

I hope you'll create the chance to go for yourself. Don't wait—get there as soon as you can. And when you do, make the most of it. Nature and the tonic of wildness she provides is about the most vital ingredient there is for the human diet. And Baja is about as vitalizing to the human spirit as it gets.

All the best,

Jeremy Lindblad

Cover: Bottle-nose dolphin, Sea of Cortez. © Ralph Lee Hopkins

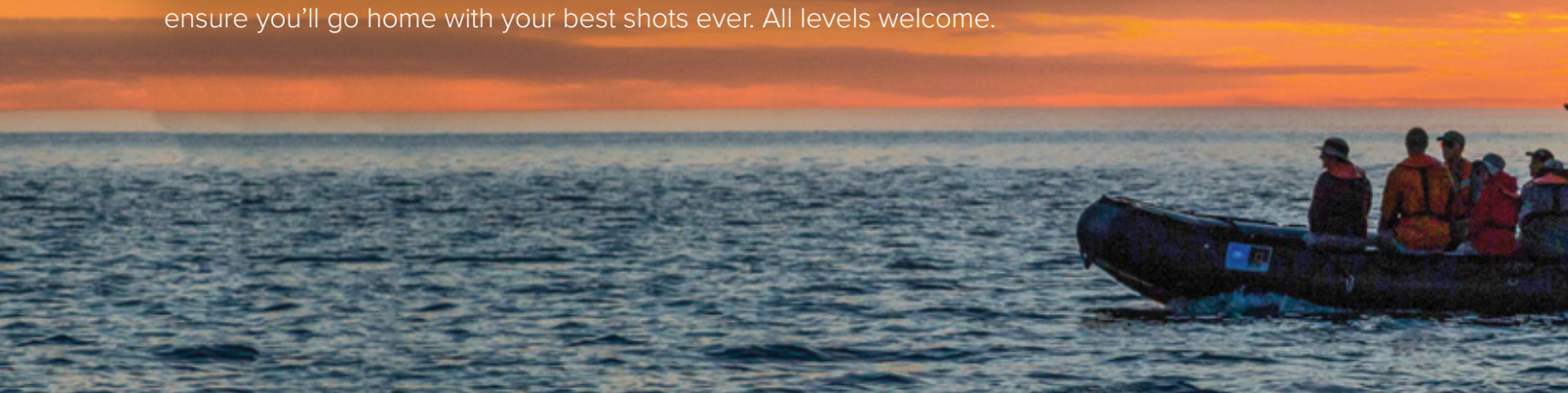
Ships' registry: United States



# CHOOSE FROM THREE EXTRAORDIN

## Baja California: A Remarkable Journey

What is definitely an established thing is the splendor of the light in Baja—something top nature photographers keep to themselves. On our 15-day photo-centric voyage you will have the opportunity to capture everything Baja provides from gray whales to the untracked sands of idyllic island beaches, with marine life, bird life and glorious light, too. The National Geographic photographer and photo instructors aboard ensure you'll go home with your best shots ever. All levels welcome.



## Whales & Wildness: Spring in the Sea of Cortez

Extraordinary performers get audiences. Brilliant chefs seldom remain a secret. That's why it's mystifying to us that *spring in the Sea of Cortez* isn't already 'a thing.' It's one of the hidden wonders of the planet. And on our expedition you'll have the whole sunlit expanse to yourself (& your fellow guests) at the absolute peak of wildlife activity. A rare and incredible gathering of life occurs each year in early April—exuberant pods of dolphins, leaping mobula rays, and a jaw-dropping number of different whale species.



# ARY EXPERIENCES



## Among the Great Whales

You can *whale-watch* in a number of places; only here can you *whale encounter*. Enjoy moving and meaningful up-close experiences with grey whale mothers and their calves in Pacific nursery lagoons. The only other route to this experience is a day trip— on our expedition, however, you'll spend two days among these gentle giants. You'll also explore the other side of the Baja Peninsula—to snorkel with sea lions, hike forests of cacti, and leave tracks on pristine desert islands.





*Clockwise from left: Magnificent Magdalena Bay sand dunes; Red-billed tropicbird; Endemic hedgehog cactus; Gray whale, San Ignacio Lagoon; guests kayaking in the Sea of Cortez.*

# THE PERFECT ROVING BASE CAMP

The renovated 62-guest twin ships, *National Geographic Sea Bird* & *Sea Lion*, are purpose-built to explore regions like the Sea of Cortez. A nimble design allows us to venture into shallow lagoons where whales give birth, and a fleet of expedition landing craft let us land on islands unmarred by tourist infrastructure. Share the thrill of spotting whales and pods of dolphins from the open bow—and use onboard tools for deeper exploration. Listen to whale communications via hydrophone, and observe undersea life via a bow-mounted camera. A fleet of kayaks lets you head off to explore windswept shores and water-level caves. Snorkeling gear for all aboard enables you to experience the thriving undersea and swim with sea lions. And the new renovations—including updated cabins, a new lounge, bar, and dining room—ensure it is more than comfortable as our base for exploration.







*Main image: Kayaking, Isla Danzante, Loreto Bay National Park; Clockwise from top: Photo opportunities abound in Baja; the ships decks provide excellent views; a relatively new born gray whale approaches an expedition landing craft.*

# ENHANCE YOUR EXPEDITION WITH A TOP TEAM

Learn, see, and do more by exploring with experts who know the region best. Share the adventure with an expedition leader, four naturalists, including a photo instructor, an undersea specialist, and a wellness specialist to lead morning stretching and aerobic hikes, plus a video chronicler who records your unique adventure.



**Linda Burback**

*Photo Instructor*

A former naturalist at Saguaro National Park, Linda is an extraordinary photographer and teacher.



**Carlos Navarro**

*Undersea Specialist*

A biochemist and marine biologist, Carlos has spent most of the last 30 years studying the Sea of Cortez.



**Alberto Montaudon**

*Naturalist*

A biologist born and raised in Tampico, Tamaulipas, Mexico he spent most of his childhood exploring the Charilel Lagoon and the Tamesi River.



**Jim Kelley**

*Expedition Leader*

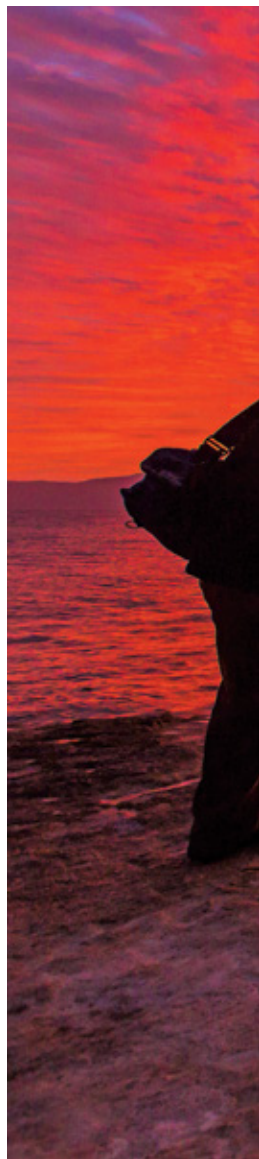
A former Fulbright Professor in Athens and professor of oceanography at the University of Washington, Jim has led expeditions since 1985.



**Larry Prussin**

*Expedition Leader*

A former National Park Ranger and director for the Yosemite Institute, Larry has led expeditions since 1990.





*Photographers at sunrise in the Sea of Cortez.*

## NATIONAL GEOGRAPHIC

### IN A LAND WITH PERFECT LIGHT, BENEFIT FROM EXPEDITION PHOTOGRAPHY

Make the most of the unrivaled photo ops of Baja California's wild islands, whales, dolphins, pelicans, and sea birds with our Expedition Photography program. Every expedition features a Lindblad Expeditions-National Geographic certified photo instructor who offers assistance, instructions and shooting tips in the field. Their expertise will inspire you and help you improve your skills—no matter your current skill or interest level—and ensure you return home with incredible photos.



Lindblad Expeditions and National Geographic have joined forces to further inspire the world through expedition travel. Our collaboration in exploration, research, technology and conservation will provide extraordinary travel experiences and disseminate geographic knowledge around the globe.



*Sunset over the Sea of Cortez.*



# ABSOLUTELY UNFORGETTABLE EXPERIENCE

Ever been approached by a curious bounding calf while its mother, the size of a greyhound bus, slowly swims protectively under your boat? Or been close enough to a gray whale that you can touch it, and see the intelligence in its eyes? On this itinerary you can have that consciousness-expanding, perhaps even life-altering experience, and more. Around the bend of the Baja Peninsula there's a whole lot more—marine mammals, sea birds, fairy tale forests of cacti and desert islands.



*Guests reach out from an expedition landing craft to greet a gray whale.*

# BAJA CALIFORNIA AND THE SEA OF CORTEZ: AMONG THE GREAT WHALES

**8 DAYS/7 NIGHTS—ABOARD NATIONAL GEOGRAPHIC SEA BIRD AND NATIONAL GEOGRAPHIC SEA LION**

PRICES FROM: \$6,590 to \$11,390 (See page 23 for complete prices.)

Seeing gray whales in their natural habitat is one of the great delights of this voyage. In Bahía Magdalena, venture out in expedition landing craft among these magnificent creatures. In the Sea of Cortez, search for a variety of whales, plus dolphins, blue-footed boobies, pelicans, cormorants and magnificent frigatebirds. You'll also snorkel among sea lions, join naturalists on hikes amid barrel cacti and sculpted sand dunes, and see a variety of desert flora and fauna.

## EXPEDITION HIGHLIGHTS

- ▶ Get an up-close view of gigantic gray whale mothers and their calves in the breeding grounds of Bahía Magdalena.
- ▶ Go snorkeling amid sea lions, brilliant blue damselfish, and schools of king angelfish.
- ▶ Kayak clear blue waters on the lookout for a variety of bird species including magnificent frigatebirds.
- ▶ Explore diverse landscapes, including sand dunes, a cactus forest and deserted islands.

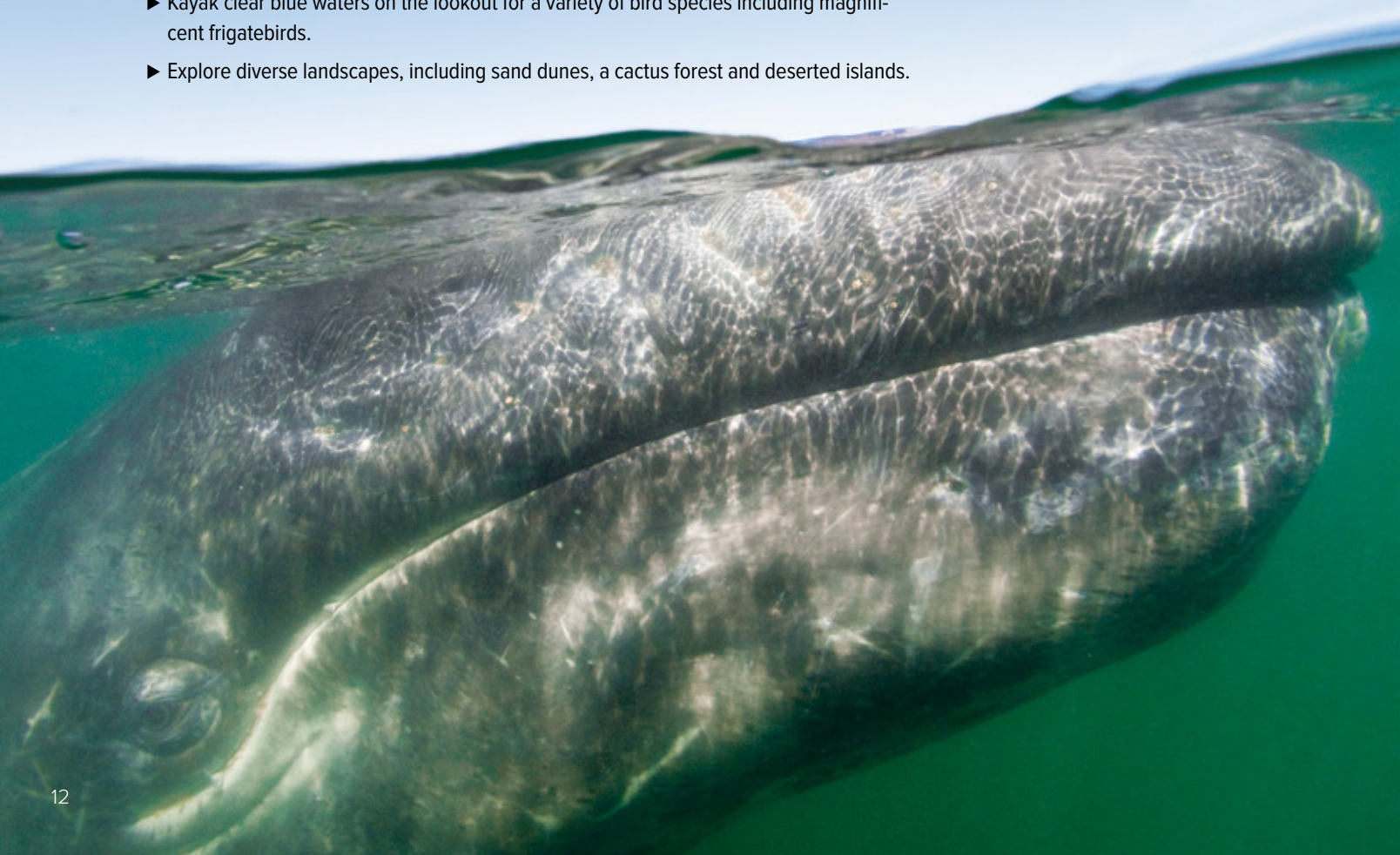
## EXPERIENCE & EXPERTISE



Our expert 6-person expedition team will illuminate the wonders of the Sea of Cortez from every possible angle. Your expedition leader, undersea specialist, Lindblad-National Geographic certified photo instructor and naturalists, plus a wellness specialist and video chronicler, are dedicated to ensuring an incredible voyage. Certain departures feature a National Geographic photographer.

*Visit our website to read staff bios for this expedition.*

*California gray whale photographed half above and half below the water in San Ignacio Lagoon.*



**DAY 1: LOS ANGELES/LA PAZ/SAN CARLOS/EMBARK**

Upon arrival in La Paz, transfer to San Carlos where we embark. (D)

**DAYS 2-4: BAHÍA MAGDALENA**

Navigate through an immense system of protected coves and channels, surrounded by a fringe of mangrove channels at one edge of a vast, windswept plain. Each winter, during their long migration, gray whales travel south from their Arctic feeding grounds to breed and raise their calves in these sheltered waters. Observe migrating whales from the ship and up close from our expedition landing craft. Watch for magnificent frigatebirds, pelicans, cormorants, terns, great blue herons, ibis and willets. (B,L,D daily)



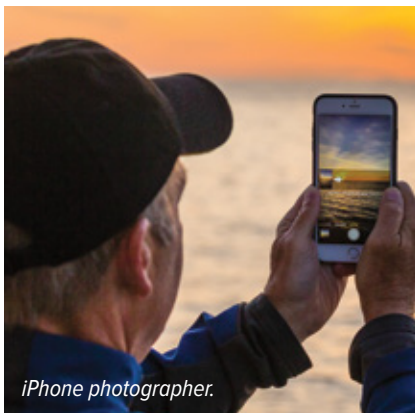
*Inquisitive California sea lions.*

**DAY 5: LOS CABOS AND GORDA BANKS**

This morning cruise past Friars Rocks at Land's End. For those who wish, we will visit the historic town center of San José del Cabo. The afternoon is spent at the Gorda Banks seamount or La Fortuna, gathering places for whales, especially humpbacks, dolphins and other sea life. (B,L,D)

**DAY 6: LOS ISLOTES AND ISLA ESPÍRITU SANTO**

At Los Islotes, don flippers, a mask and snorkel (which we'll gladly provide) and swim with curious sea lions. We have a leisurely afternoon to swim, kayak or hike at Isla Espíritu Santo. Brown pelicans, gulls and boobies are all part of the landscape. Finish the day with a relaxing beach barbecue complete with a bonfire and a star-filled sky. (B,L,D)



*iPhone photographer.*

**DAY 7: EXPLORING THE SEA OF CORTEZ**

Search for whales among the islands of the southern Sea of Cortez, an area that has proven to be one of the best for finding blue whales, and often common and bottlenose dolphins. Explore the many uninhabited islands such as Isla San José or Isla Santa Catalina to walk among huge cacti and observe the diverse bird life. Swim or snorkel with king angelfish, butterfly fish, damselfish and the beautiful parrotfish. (B,L,D)

**DAY 8: LA PAZ/DISEMBARK/HOME**

Disembark in La Paz after breakfast and drive to the airport for flights home. (B)



**EXPEDITION DETAILS**

**DATES:** 2018 Jan. 13\*, 20, 27\*; Feb. 3, 10\*, 17, 24\*; Mar. 3, 10\* (*Sea Bird*) Jan. 27, Feb. 3\*, 10, 17\*, 24\* (*Sea Lion*)

*\*These departures travel in reverse from La Paz to San Carlos, making all the same stops.*

**NATIONAL GEOGRAPHIC EXPERT**

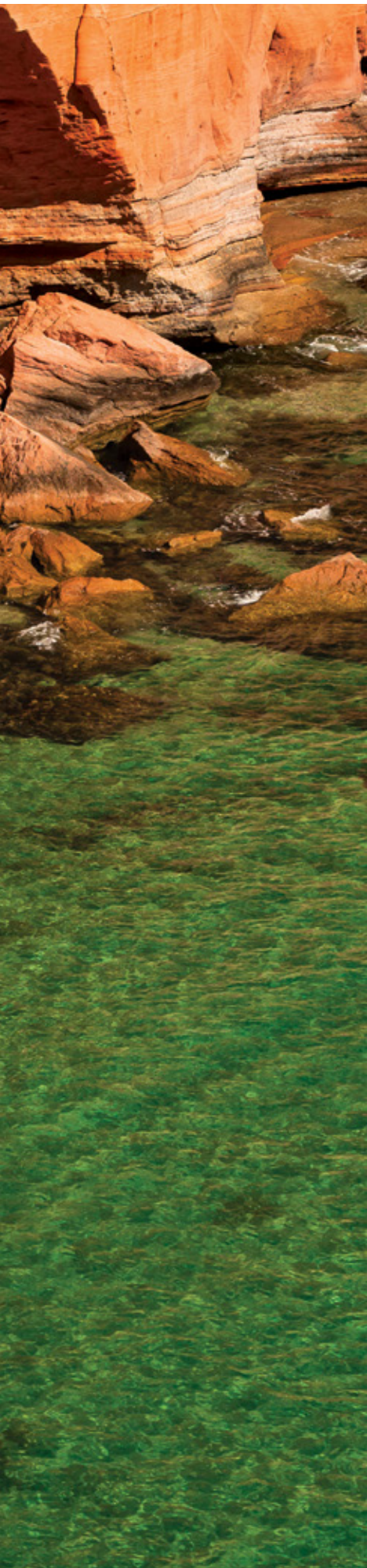
**Greg Marshall** is a scientist, inventor, and filmmaker who has dedicated the last 25 years to studying, exploring, and documenting life in the oceans. He is the inventor of Crittercam, a research tool used to record data from an animal's perspective. Join Greg on the Jan. 13 & 20, 2018 voyages.



*After a beach barbecue, guests gather around a bonfire.*







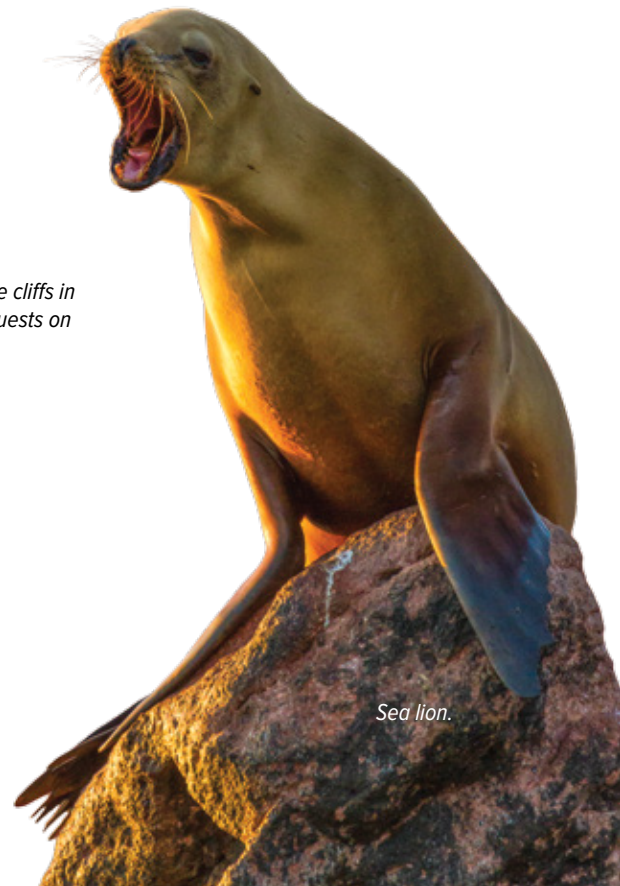
# RAREST THINGS ON EARTH: A PRISTINE PLACE, NO OTHER PEOPLE



Whether you need an escape or simply want a different vista, seek the Sea of Cortez. It's a tonic for what ails you, a pick-me-up for the spirit, or simply the most enlivening several days away you could spend.

Nature works her miracles here, presenting a daily spectacle that can range from a dolphin ship escort (often numbering in the hundreds), to a passing blue whale, the largest animal on the planet. Snorkeling, kayaking, paddle boarding. Sea caves, sand dunes, nights under stars. And the joy of feeling you're on a private planet.

*Main Image: A guest kayaks near the sandstone cliffs in Isla San Jose. Above: A gray whale entertains guests on an expedition landing craft cruise.*



*Sea lion.*

# BAJA CALIFORNIA: A REMARKABLE JOURNEY

15 DAYS/14 NIGHTS—ABOARD *NATIONAL GEOGRAPHIC SEA BIRD*  
AND *NATIONAL GEOGRAPHIC SEA LION*

PRICES FROM: \$11,290 to \$19,340 (See page 23 for complete prices.)

Embark on a comprehensive photo expedition that explores both the Pacific side of Baja California and the islands in the Sea of Cortez. Venture into the gray whale lagoons for up close encounters, and then spend ample time exploring the Sea of Cortez and all its marine mammals. See scores of blue-footed boobies and pelicans, kayak into quiet grottos, and visit charming seaside towns.

## EXPEDITION HIGHLIGHTS

- ▶ Get up-close views of gray whale mothers and their growing calves as they prepare for their journey back to arctic feeding grounds.
- ▶ Kayak clear blue waters to search for wildlife, including magnificent frigatebirds, and possibly explore water-level caves by kayak.
- ▶ Snorkel the living sea: Observe large schools of vibrantly colored fish, swim among playful sea lions, and much more.
- ▶ With more time for adventure, rely on your expedition leader to take you where wildlife will be at its best—including a possible exploration of a rare island covered in hundreds of thousands of elegant terns or shorelines where whales and dolphins congregate in great numbers.

## EXPERIENCE & EXPERTISE

**35+**  
YEARS  
EXPERIENCE

Our expert 6-person expedition team will illuminate the wonders of Baja & the Sea of Cortez from every possible angle. Your expedition leader, undersea specialist, three Lindblad-National Geographic certified photo instructors and naturalists, plus a wellness specialist and video chronicler, are dedicated to ensuring an incredible voyage. A National Geographic photographer is on board and at your service.

Visit our website to read staff bios for this expedition.

*Bottlenose dolphins.*

**DAY 1: LOS ANGELES/LA PAZ/  
SAN CARLOS, MEXICO/EMBARK**  
Fly to La Paz and transfer to San Carlos to  
embark. (D)



*Giant barrel cactus,  
Isla Santa Catalina.*

**DAY 2: BAHÍA MAGDALENA**  
Explore the ever-shifting sand dunes of Isla Magdalena, on a cross-island walk to one of the most pristine beaches in the Pacific. Bird watching here can be excellent — magnificent frigatebirds, pelicans, cormorants, terns and great blue herons, ibis, whimbrels and willets are among the species we might see. It's not unusual to see forty species of birds in just one day along these fertile shorelines where they refuel for their destinations ahead. (B,L,D)

**DAY 3 AND 4: LAGUNA SAN IGNACIO**  
Laguna San Ignacio is a large bay and favored haunt of the gray whales in Baja. The ship will linger in this remote and important locale, while we observe the mother and calf pairs — from the ship, and from water level in our expedition landing craft and local pangas. For some reason, the whales here seem to be friendlier than they are elsewhere. It's not unusual for mothers and calves to approach our boats, the calves often playing hide and seek — sometimes even wanting to be petted and scratched. (B,L,D)

**DAY 5: AT SEA**  
As we travel south along the Pacific coast of the peninsula, there is a chance of seeing a wide variety of marine life, including the largest animal on Earth, the blue whale. (B,L,D)

**DAY 6-14: ISLANDS OF THE SEA OF CORTEZ**  
Cruise past the spectacular Friars Rocks at Land's End. For those who wish, we will arrange a visit to the historic town center of San Jose del Cabo. Espiritu Santo. Los Islotes. Santa Catalina. These are some of the melodious names of these islands scattered throughout this beautiful sea. After over 20 years of exploration here, we are still discovering new places and experiencing exciting events: bowriding bottlenose dolphins, or sperm whales near our ship; a pod of fin whales feeding around a convergence zone; the vision of hundreds of Humboldt squid illuminated in the ship's bow lights. The best areas for whale watching remain consistent — the waters south of Isla Carmen, Canal de Ballenas up north, and near the mouth of Bahia Concepción. Whether on the bridge of the ship, on expedition landing craft or kayaks, we will be in prime position to observe them all. (B,L,D)

**DAY 15: LA PAZ/DISEMBARK/  
RETURN U.S.**  
After a visit of La Paz, transfer to the airport for your flight to the U.S. (B)



**EXPEDITION DETAILS**  
**DATES:** 2018 Mar. 4 📷, 17 📷, 18 📷  
📷 Photo Expedition

**NATIONAL GEOGRAPHIC PHOTOGRAPHER**  
Enjoy a unique experience and travel with award winning photographer and filmmaker **Rich Reid** on the Mar. 4, 2018 voyage.



*Sunset over La Giganta mountains.*



*Guests shoot from expedition landing craft.*





# TAKE YOUR CAMERA WHERE IT WANTS TO GO



Give your eye the light it deserves—Baja's. This photo 'safari,' led by an ace photo team, including a top National Geographic photographer and three Lindblad-National Geographic certified photo instructors, delivers all

the major Baja sites & experiences on one sweeping two-week expedition: gray whales, and a plethora of passing whale species, to racing, leaping dolphins and an island teeming with birds, with island hopping among pristine desert isles, charming peninsula towns, and snorkeling with playful sea lions, as well. You'll have the luxury of time and perfect vantage points— on shore, on the ship's bow or aboard an expedition landing craft— to get your best shots. Our photo team's skill and attention will help you step up your game—whether you're using an iPhone, point & shoot, or big glass. Have the time of your life and return home a better, more confident photographer.

*Main Image: Director of Expedition Photography, Ralph Lee Hopkins, shoots on Magdalena Bay with National Geographic Sea Bird in the distance. Above: Lone Hiker, Giant Barrel Cactus, Santa Catalina Island, Loreto Bay National Park, Sea of Cortez, Baja California, Mexico*



# WHALES & WILDNESS: SPRING IN THE SEA OF CORTEZ

**8 DAYS/7 NIGHTS—ABOARD NATIONAL GEOGRAPHIC SEA BIRD  
AND NATIONAL GEOGRAPHIC SEA LION**

PRICES FROM: \$6,190 to \$10,790 (See page 23 for complete prices.)

Watch whales and dolphins from the deck of one of our intimate, 62-guest expedition ships and at water level from nimble expedition landing craft. Spring in the Sea of Cortez can be a great time to see pods of dolphins and various species of whales—blue, sperm, pilot or fin—all in the same week. Hike uninhabited beaches and desert landscapes. Observe myriad seabirds. Kayak in pristine waters, snorkel among reef fish and enjoy the serenity of a sunset beach barbecue under a starry sky. This unique journey is designed with a flexible itinerary, with our staff choosing sites based on conditions and to maximize wildlife sightings, adding a stimulating sense of adventure to each day.

## EXPEDITION HIGHLIGHTS

- ▶ Search for pods of dolphins and various species of whales: blue, fin, sperm, humpback, pilot or Bryde's.
- ▶ Kayak, swim and snorkel with sea lions in pristine waters, and hike diverse desert landscapes.
- ▶ Visit the old mining town of Santa Rosalia, with its wooden homes and a steel church designed by Gustave Eiffel.

## EXPERIENCE & EXPERTISE

**35+**  
YEARS  
EXPERIENCE

Our expert 6-person expedition team will illuminate the wonders of Baja & the Sea of Cortez from every possible angle. Your expedition leader, undersea specialist, Lindblad-National Geographic certified photo instructor and naturalists, plus a wellness specialist and video chronicler, are dedicated to ensuring an incredible voyage. A National Geographic photographer is on board and at your service.

*Visit our website to read staff bios for this expedition.*

*California sea lions basking in the sun.*

**DAY 1: HOME/LOS CABOS, MEXICO/  
EMBARK LA PAZ**

Fly into Los Cabos and transfer to La Paz to set sail on the Sea of Cortez. (D)

**DAY 2-7: EXPLORING THE SEA OF  
CORTEZ**

Our routing is designed with flexibility in mind, to maximize opportunities for wildlife sightings. It will most likely include the islands and activities listed below, although the order may vary. (B,L,D daily)

**ISLAS SAN ESTEBAN AND SAN  
PEDRO MÁRTIR:**

Walk up a desert wash, to search for desert birds and the endemic pinto chuckwalla—a fat, harmless desert lizard. Later visit Isla San Pedro Mártir, a 1,000-foot-high guano-covered island that is home to thousands of seabirds. Blue-footed boobies, red-billed tropicbirds, pelicans and frigatebirds are all found here.

**ISLA SAN MARCOS:**

At Isla San Marcos there is a beautiful cove for swimming, snorkeling, and kayaking. In the afternoon we are again in rich whale waters, near the mouth of Bahía Concepción where we stand a good chance of sighting several species of whales, particularly fin or sperm.

**ISLA SAN JOSE:**

One of the larger islands in the Sea of Cortez, San Jose offers several landing possibilities

depending on conditions and the whim of the moment. Photograph the ochre cliffs of the island's eastern shore, hike an "enchanted" arroyo, or visit the abandoned salt works to the west.

**ISLA SANTA CATALINA:**

This morning we'll search for whales in the waters south of Isla Carmen, an area that has proven to be one of the best for finding blue whales, and often bottlenose and common dolphins. In the afternoon we visit Isla Santa Catalina, famous for its giant barrel cactus and lovely cardon cactus forest. The protected bay of our anchorage is also an excellent site for snorkeling. With a full afternoon here, there is time for swimming, snorkeling and hiking.

**LOS ISLOTES AND ISLA ESPÍRITU  
SANTO:**

At Los Islotes, snorkelers have one of life's great opportunities—swimming with graceful and curious sea lions. With a deeply indented shoreline and dramatically eroded cliff faces, Isla Espíritu Santo is perhaps the most beautiful island in the Sea of Cortez. We have a leisurely afternoon for swimming, snorkeling, kayaking, and in the evening, a beach barbecue under the desert sky.

**DAY 8: DISEMBARK LA PAZ, MEXICO/  
LOS CABOS**

Disembark in La Paz and transfer to the airport in Los Cabos for flights home. (B)



**EXPEDITION DETAILS**

**DATES:** 2018 Mar. 31 📷, Apr. 2 📷, 7, 9, 14  
📷 Photo Expedition





## NATIONAL GEOGRAPHIC SEA BIRD & SEA LION

**CAPACITY:** 62 guests in 31 outside cabins.

**REGISTRY:** United States.

**OVERALL LENGTH:** 152 feet.

**PUBLIC AREAS:** Our ships feature a library; global market; lounge with full-service bar and facilities for films, slide shows and presentations; Observation Deck; partially covered sundeck with chairs and tables, and LEXspa. Our “open bridge” provides guests an opportunity to meet our officers and captain and learn about navigation.

**MEALS:** Served in single seatings with unassigned tables for an informal atmosphere and easy mingling. Breakfast is a wide selection buffet and lunch is often served family style.

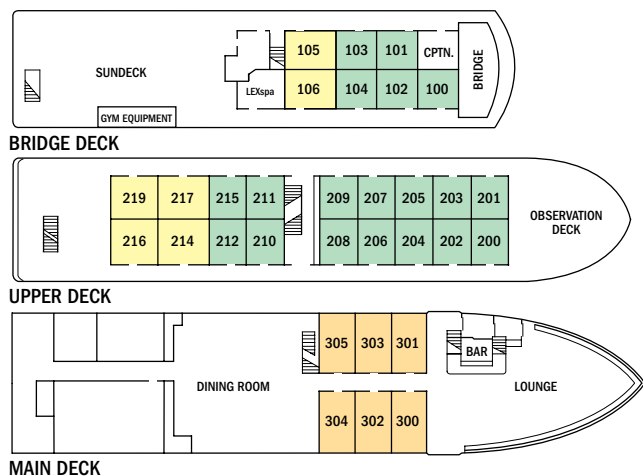
Menu emphasizes local fare.

**CABINS:** All face outside with windows, private facilities and climate controls.

**EXPEDITION EQUIPMENT:** Bow camera, hydrophone, kayaks, snorkeling gear, paddle boards, wetsuits, Splash-Cam, underwater video camera, video microscope, and expedition landing craft.

**SPECIAL FEATURES:** Guest Internet access. A video chronicler, undersea specialist and ship's doctor are on board all voyages.

**WELLNESS:** The vessel is staffed by a wellness specialist and features exercise equipment, LEXspa and outdoor stretching area.



**CATEGORY 1:** Main Deck #300-305 — Conveniently positioned between the dining room & lounge, these cabins feature two single lower beds, a writing desk and a large view window.

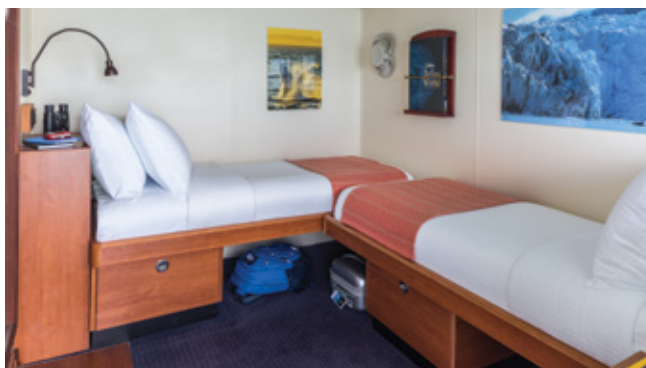
**CATEGORY 2:** Bridge Deck #100-104; Upper Deck #200-212, 215 — These well-located cabins include two lower single beds & a view window.

**CATEGORY 3:** Bridge Deck #105, 106; Upper Deck #214, 216, 217, 219 — These cabins feature a seating unit with table and two large view windows. Upper Deck cabins include two lower single beds which can convert to a double bed and a pull-out single bed for a third person; Bridge Deck cabins include two lower single beds only.

Note: Sole Occupancy cabins are available in Categories 1 and 2 only. Third person rates are available in certain categories at one half the double occupancy rate.

Shared Accommodations: Shares can be arranged at the double occupancy rate in Categories 1 and 2 only.





Photos (clockwise): Expedition ship National Geographic Sea Bird can access hard to reach locations; twin beds can be pushed together to form a double bed in Category 3 cabins on the Upper Deck; Dinner is served in single seatings with unassigned tables for easy mingling; a comfortable Category 2 cabin freshly redesigned.

## 2017 PRICES HELD FOR 2018 DEPARTURES IF BOOKED BY JUNE 1, 2017.

After June 1, 2017, call or visit [expeditions.com](http://expeditions.com) for new 2018 prices.

Prices are per person, double occupancy unless indicated as solo.

ITINERARY	YEAR	CAT. 1	CAT. 2	CAT. 3	CAT. 1 SOLO	CAT. 2 SOLO	ADVANCE PAYMENT	NOTE
<b>Baja California and the Sea of Cortez: Among the Great Whales – Page 12</b>	2018 <sup>†</sup>	\$6,590	\$7,590	\$8,590	\$9,890	\$11,390	\$1,000	We have arranged a dedicated, direct flight round-trip La Paz for this voyage. Due to the voyage ports there are no other direct flights available. Please contact our air department to book. Sample Airfare: Round-trip Los Angeles/La Paz/Los Angeles: Economy \$800, Business \$1,450.
<b>Baja California: A Remarkable Journey – Page 16</b>	2018 <sup>†</sup>	\$11,290	\$12,890	\$14,990	\$16,940	\$19,340	\$1,500	We have arranged a dedicated, direct flight round-trip La Paz for this voyage. Due to the voyage ports there are no other direct U.S. flights available. Please contact our air department to book. Sample Airfare: Round-trip Los Angeles/La Paz/Los Angeles: Economy \$800, Business \$1,450
<b>Whales &amp; Wildness: Spring in the Sea of Cortez – Page 20</b>	2018 <sup>†</sup>	\$6,190	\$7,190	\$7,990	\$9,290	\$10,790	\$750	Sample Airfare: Round-trip Los Angeles/Los Cabos/ Los Angeles: Economy from \$450.

<sup>†</sup>2017 prices for 2018 departures guaranteed if booked by June 1, 2017.

# TAKE ADVANTAGE OF OUR SPECIAL OFFERS

**SPECIAL SAVINGS:** Book Early & Save! 2017 prices are guaranteed for all 2018 departures if booked by June 1, 2017.

**TRAVELING AS A GROUP:** Save 5% when traveling as a group of 8 or more people. Take advantage of these great savings, while enjoying traveling with your friends and family. This savings is applicable on voyage fares only, and not on extensions or airfare. Deposit, final payment, and cancellation policies for group travel vary from our regular policies.

## INCLUSIVE PRICING

We include just about everything you have the opportunity to do as part of your expedition aboard ship and ashore. The only things not included are those of a personal nature—internet usage, wellness treatments and other specialized arrangements.

### ABOARD SHIP

- ✓ All meals and non-alcoholic beverages
- ✓ Accommodations
- ✓ 24-hour coffee, tea & soda on demand
- ✓ Hors d'oeuvres & snacks during Recap
- ✓ Fully stocked library
- ✓ The guidance and company of our expedition staff
- ✓ Environmentally friendly refillable water bottle

### ASHORE

- ✓ Meals on land, as indicated in itinerary

- ✓ Special access permits, park fees, port taxes
- ✓ Transfers to and from group flights
- ✓ The expertise of our expedition staff

### ACTIVITIES

- ✓ All shore activities
- ✓ Expedition landing craft explorations
- ✓ Kayaking
- ✓ Snorkeling
- ✓ Stand up paddle boarding
- ✓ Lectures & presentations in the lounge
- ✓ Morning stretch classes with wellness specialist



## LOG ON TO EXPEDITIONS.COM

Find everything you need to dream, research or plan travel to 40+ destinations worldwide.

### Be part of our expedition community

#### Join in! Here's how:

- ▶ Check out Expedition Snapshots from guests - and upload your own on the expeditions.com homepage
- ▶ Check our daily blog: [expeditions.com/blog](http://expeditions.com/blog)
- ▶ Like us on Facebook: get inspired and chime in: [facebook.com/LindbladExpeditions](https://facebook.com/LindbladExpeditions)
- ▶ Subscribe to our videos on [youtube.com/lindbladexpeditions](https://youtube.com/lindbladexpeditions)
- ▶ Follow @LindbladExp on Twitter and find Sven Lindblad on Instagram [solindblad](https://instagram.com/solindblad).



## RESERVATION INFORMATION

**Costs Include:** All accommodations aboard ship or in hotels per itinerary or similar, all meals and nonalcoholic beverages aboard ship, meals on land as indicated, air transportation where indicated as included, shore excursions, sightseeing and entrance fees, special access permits, transfers to and from group flights, use of snorkeling equipment and use of kayaks (where available), tips (except to ship's crew), taxes and service charges, services of a ship physician, and services of our expedition staff.

**Not Included:** Air transportation (except where shown as included), extensions, passport, visa, immigration fees, meals not indicated, travel protection plan, items of a personal nature such as alcoholic beverages, e-mail, voyage DVD, scuba diving (where available), laundry. Gratuities to ship's crew are at your discretion.

**Airfare:** For all programs, airfare is an additional cost unless otherwise indicated. Sample airfares are subject to change. We will gladly assist in making your air arrangements for a \$50 per person service fee.

### TERMS & CONDITIONS

**Reservations:** To reserve your place, an advance payment is required at the time of reservation. The per person advance payment amount varies by program, and is outlined in our brochures, as well as on our website. Payment is accepted by Visa, MasterCard, American Express, Discover, or by check. Receipt of your initial payment indicates your acceptance of our complete Terms and Conditions. We require written notice at the time of reservation for any physical condition, diet, or treatment requiring special attention. Once your reservation is confirmed, we urge you to use your personalized online account for important information to help you prepare for your voyage. Managing your documents online will facilitate fast and accurate communication, and allow you to provide us with pertinent details we require, in order to complete your reservation. Your online account gives you access to your Expedition Guide, which includes valuable information specific to your voyage. You can also use your online account to make easy payments, view recommended flights and reading material, packing list, and so much more.

**Final Payment:** Due no later than 90 days prior to departures, depending on the expedition.

**Travel Protection Plan:** We strongly recommend that you take advantage of our Travel Protection Plan. This plan offers comprehensive coverage to protect you from cancellation fees, costs incurred due to trip delays/interruption, and damaged or lost baggage, and provides medical assistance and evacuation during your travels. Our Travel Protection Plan is available for U.S. and Canadian residents only, and may be purchased any time prior to final payment due date. Travel Protection premiums are non-refundable once plan is purchased.

**Smoking Policy:** Smoking is allowed only in designated outdoor areas.

**Responsibility and Other Terms & Conditions:** Among other things, limitations of Lindblad Expeditions' and the National Geographic Society's liability for loss of property, injury, illness or death during the voyage will be provided to all guests on the ship's ticket sent prior to departure, and are also available on our website at [www.expeditions.com/terms](http://www.expeditions.com/terms), or upon request. By registering for a trip, the guest agrees to all such terms and conditions.

**Note:** Itineraries and prices listed in this brochure are valid as of publication date, and are subject to change. Under normal conditions, the total expedition cost is guaranteed at the time of booking. However, the

published price is determined far in advance of initial departure on the basis of then-existing projections of fuel and other costs. In the event we determine that current costs create an unsustainable financial model, including but not limited to increases in the price of fuel, currency fluctuations, increases in government taxes or levies, or increased security costs, we reserve the right to pass on these costs to you, to cover such unexpected increases. We will always provide a transparent accounting of the reason for such an increase in costs.

A State Department travel warning for Mexico is currently in effect (<http://travel.state.gov>). The area of concern noted in the warning is not near the region we visit on this itinerary. We expect to operate these expeditions as planned, but will continue to closely monitor events in the country.

### CANCELLATION POLICY

Number of Days Prior to Expedition Start	Per Person Cancellation Fee
120 or more days	\$350
119–90 days	Advance payment cost
89–60 days	25% of total fare
59–45 days	50% of total fare
44–0 days	No refund

\$350 will be rewarded in the form of a Lindblad Expeditions Travel Certificate. This cancellation policy applies to expeditions as well as extensions and other additional services. The effective date of a cancellation will be the date on which your notice is received. Note: Airline cancellation policies vary by carrier, as well as the type of fare used to issue your ticket. Any revisions you make within the cancellation penalty period, such as departure date or choice of voyage, are subject to cancellation fees. Additional Terms and Conditions may apply. For complete terms, please visit our website at [www.expeditions.com/terms](http://www.expeditions.com/terms).

### United States Tour Operators Association \$1 Million Travelers Assistance Program



Lindblad Expeditions, as an Active Member of USTOA, is required to post \$1 Million with USTOA to be used to reimburse, in accordance with the terms and conditions of the USTOA \$1 Million Travelers Assistance Program, the advance payments of Lindblad Expeditions customers in the unlikely event of Lindblad Expeditions bankruptcy, insolvency or cessation of business. Further, you should understand that the \$1 Million posted by Lindblad Expeditions may be sufficient to provide only a partial recovery of the advance payments received by Lindblad Expeditions. More details of the USTOA Travelers Assistance Program may be obtained by writing to USTOA at 345 Seventh Avenue, Suite 1801, New York, New York 10001, or by email to [information@ustoa.com](mailto:information@ustoa.com) or by visiting their website at [www.USTOA.com](http://www.USTOA.com).

We are proud to be a Founding Member of



Adventure Collection—a family of the world's most trusted and experienced active travel companies. Each member company of Adventure Collection is dedicated to enriching the lives of its guests and to giving back to the areas in which it travels. For more information visit [www.AdventureCollection.com](http://www.AdventureCollection.com).

Photo Credits: Corbis, Rab Cummings, Ralph Lee Hopkins, Sven-Olof Lindblad, Flip Nicklin, Michael S. Nolan, Gary D. Paige, Marco Ricca, Jack Swenson, Rikki Swenson, Mark Thiessen, David Vargas.



## TRAVEL PLANNING WITH A DIFFERENCE

Half of travel planning is learning what you don't know and generating questions. The other half is getting answers.

When you call **1.800.EXPEDITION**, you can ask for any one of our Expedition Specialists who have been on our Baja expeditions. They are full members of the Lindblad Expeditions team—students of the natural world and born explorers, not trained call center telemarketers.

**SO WHY NOT TAKE ADVANTAGE OF THEIR EXPERTISE?** Don't hesitate to call with your questions—they're equipped to provide answers based on their knowledge and personal experience.

Ask them about Baja California, how we explore there, our ships, our itineraries, and more. We think you'll find the conversation rewarding.

©2016 Lindblad Expeditions. Lindblad Expeditions and the Eye are the trademarks of Lindblad Expeditions. All rights reserved. NATIONAL GEOGRAPHIC and the Yellow Border are the trademarks of the National Geographic Society. All rights reserved.

**For Reservations: Contact your travel advisor or Lindblad Expeditions**

**1.800.EXPEDITION**  
(1.800.397.3348)

**Reservation Hours:**

**Mon. - Fri. 9am-8pm ET,**

**Sat. & Sun. 10am-5pm ET**

**Lindblad Expeditions, Inc.,**

**96 Morton Street, New York, NY 10014**

**Phone: 212.261.9000**

**Email: [explore@expeditions.com](mailto:explore@expeditions.com)**

**For additional information and online**

**reservations, visit us on the Web:**

**[www.expeditions.com](http://www.expeditions.com)**



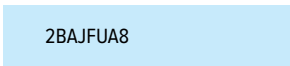
96 Morton Street  
New York, NY 10014

PRSR STD  
U.S. POSTAGE  
PAID  
LINDBLAD  
EXPEDITIONS

Account Number:



Expedition Code:



**1.800.EXPEDITION | WWW.EXPEDITIONS.COM**

♻️ Printed on 10% recycled content paper with soy-based inks. We recommend that you pass this along for others to enjoy or recycle.

BAJ-037

STAY CLOSE, GET FAR AWAY | SPECIAL SAVINGS OFFER GETS YOU THERE

### SELECTED HONORS & AWARDS

- » Condé Nast Traveler’s Readers’ Choice Award—Top Small Ship Cruise Lines, 2015, 2014
- » Porthole Cruise Magazine Readers’ Choice Awards: Best Expedition Cruise Line, 2015
- » The Tourism Cares Travel Philanthropy Awards: Legacy in Travel Philanthropy, 2015
- » World Travel Awards: World’s Leading Green Cruise Line, 2015
- » Condé Nast Traveler’s 2014 Readers’ Poll—Top 20 Small Cruise Ships in the World, 2014
- » Condé Nast Traveler World Savers “Doing it All” Award, 2013
- » Condé Nast Traveler Readers’ Choice Award—Top 25 Cruise Lines, 2013
- » Condé Nast Traveler “Gold List”, 2013, 2009, 2008, 2007, 2006, 2005
- » Virtuoso “Sustainable Tourism Leadership-Supplier” Award, 2013
- » Travel + Leisure “World’s Best” Award for Small-Ship Cruise Lines, 2013, 2012, 2011, 2010, 2009, 2008
- » Travel + Leisure “World’s Best for Families” Award for Small-Ship Cruise Lines, 2012, 2011, 2010, 2009
- » Cruise Critic Editor’s Pick Awards “Best for Adventure,” 2013, 2012, 2011, 2010
- » Climate Champion Award to Sven Lindblad by Clean Air-Cool Planet, 2009
- » Tourism for Tomorrow “Global Tourism Business Award,” 2007

▶ GO TO [WWW.EXPEDITIONS.COM/AWARDS](http://WWW.EXPEDITIONS.COM/AWARDS) FOR AN EXTENDED LIST

