

BAJA

& THE SEA OF CORTEZ

A UNIQUE BLEND OF THRILL & CHILL



ABOARD NATIONAL GEOGRAPHIC VENTURE | 2019



Lindblad
Expeditions



NATIONAL
GEOGRAPHIC™



Lindblad
Expeditions



NATIONAL
GEOGRAPHIC™

Lindblad Expeditions and National Geographic have joined forces to further inspire the world through expedition travel. Our collaboration in exploration, research, technology and conservation will provide extraordinary travel experiences and disseminate geographic knowledge around the globe.



DEAR TRAVELER,

Baja California is a remarkable geography—remote, wild, and untrammled. And beginning this December our brand-new expedition ship *National Geographic Venture* will spend her inaugural season roaming freely in the vibrant Sea of Cortez.



She is the ideal platform for exploring here, designed with a sprawling observation deck, generous windows, and a unique bow that offers unobstructed views of the abundant wildlife and passing desert isles. Plus, she is equipped with a suite of cool tools for exploring, from Zodiacs to stand-up paddleboards. *Venture* will get you closer than ever to these pristine wilds—letting you experience Baja in a powerful, new way.

Our four distinct itineraries create exhilarating opportunities to revel in the kind of moments only nature can provide. On our *Among the Great Whales* itinerary (pages 12-13) we have extraordinary encounters with friendly gray whale mothers and calves in the nursery lagoons. On *Whales and Wildness* (page 20-21) prepare to witness a living sea. There are dolphins by the score, often approaching us to playfully bow ride, “surfing” the pressure wave pushed ahead of the ship, speeding along with us in an exuberant leaping, racing display. Watch for mobula rays—soaring out of the water in a mesmerizing display of acrobatics. We sight diverse whales, including rare blue whales to deep-diving sperm whales. And we snorkel with playful sea lions amid schools of bright reef fish.

For photography enthusiasts, there is *A Remarkable Journey* (pages 16-17). This comprehensive, photo-centric voyage offers everything the peninsula provides—plus, a team of National Geographic photographers and certified photo instructors to help you capture it all. And for those craving a “wildness and wellness” break, we have designed our compact *Base Camp Baja* itinerary (pages 24-25). Take a mindfulness hike into cactus forests of surreal strangeness and beauty, practice yoga or boot camp workouts on the silken sands of desert islands, and relax at a beach BBQ as dusk shades into evening.

Baja is one of our planet’s places that supply the human spirit with big doses of the tonic of wildness. So, whether you need it for yourself, or are seeking an experience for your family to share, I hope you will join us when *Venture* sets sail this year. Few experiences are as rewarding, I promise.

All the best,

A handwritten signature in blue ink, appearing to read 'Sverri-Olof Lindblad'. The signature is fluid and cursive, with a large initial 'S'.

Sverri-Olof Lindblad

BRING THE KIDS:

SAVE \$500 for each child under the age of 18.

GET THE GROUP ON BOARD:

Gather 6 or more under one booking and SAVE 10%. See page 28 for details.

BAJA: 4 UNIQUE WAYS

Discover a miraculous sea, teeming with life, ringed by desert islands alive with wildness—Baja is like no other place and we offer peerless ways to experience the peninsula.

YOU CAN WHALE WATCH OTHER PLACES, ONLY HERE CAN YOU WHALE ENCOUNTER

And you'll have plenty of chances to get up-close to these gentle giants—the gray whale mothers and calves that migrate annually to these nursery lagoons. We'll spend time among them, observing them at water level aboard our Zodiacs, with expert spotters and knowledgeable naturalists ensuring and enhancing your experience among these marvelous “friendlies.” See

[Among the Gray Whales](#) on pp 12-13.

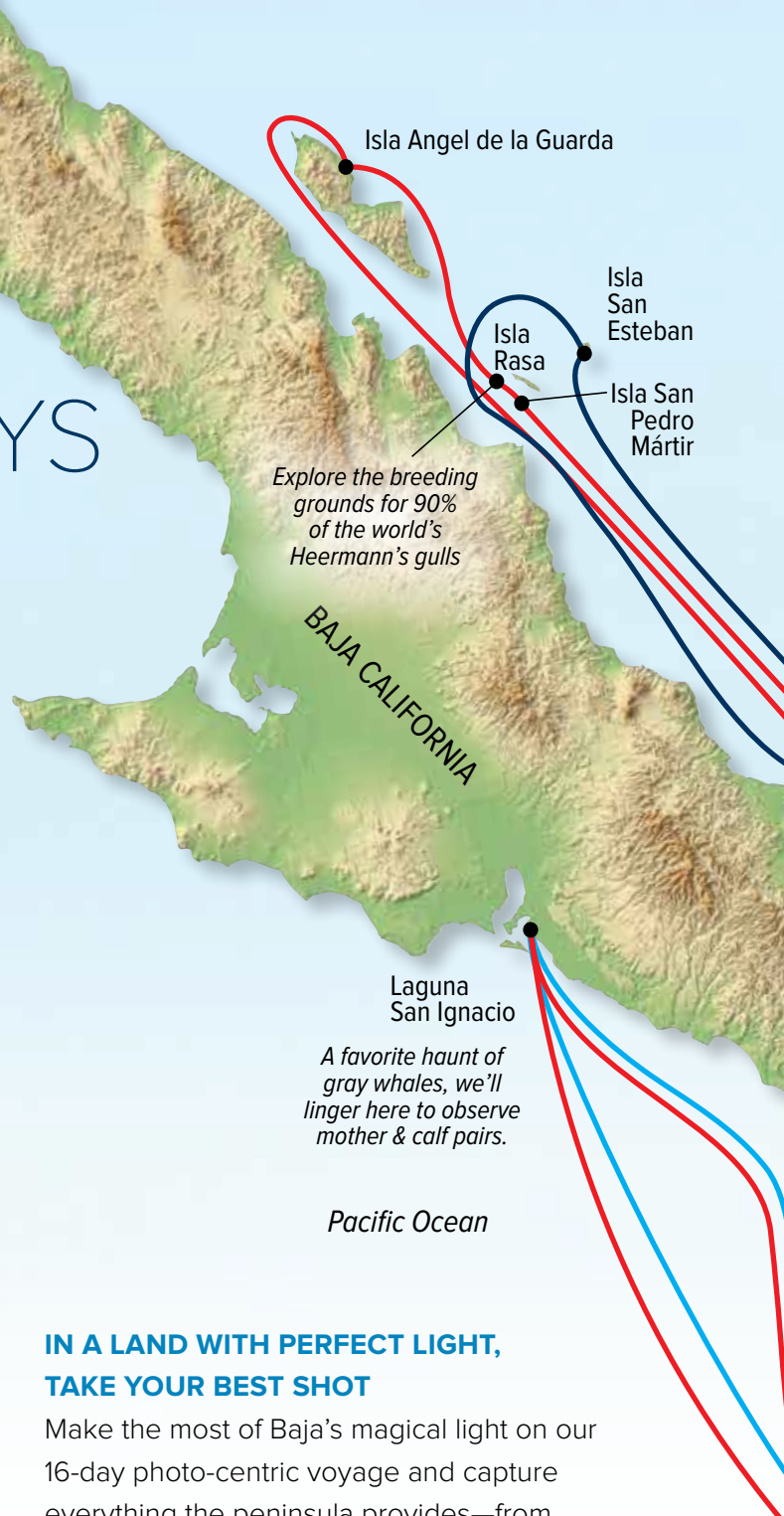


**BAJA CALIFORNIA AND THE SEA OF CORTEZ:
AMONG THE GREAT WHALES | 10 DAYS**

**BAJA CALIFORNIA:
A REMARKABLE JOURNEY | 16 DAYS**

**WHALES & WILDNESS:
SPRING IN THE SEA OF CORTEZ | 8 DAYS**

BASE CAMP BAJA | 5 DAYS



IN A LAND WITH PERFECT LIGHT, TAKE YOUR BEST SHOT

Make the most of Baja's magical light on our 16-day photo-centric voyage and capture everything the peninsula provides—from majestic gray whales and other amazing marine life to idyllic, sun-drenched island beaches. A National Geographic photographer and certified photo instructors aboard ensure you'll go home with incredible photos, no matter your skill level. See [A Remarkable](#)

[Journey](#) on pp 16-17.

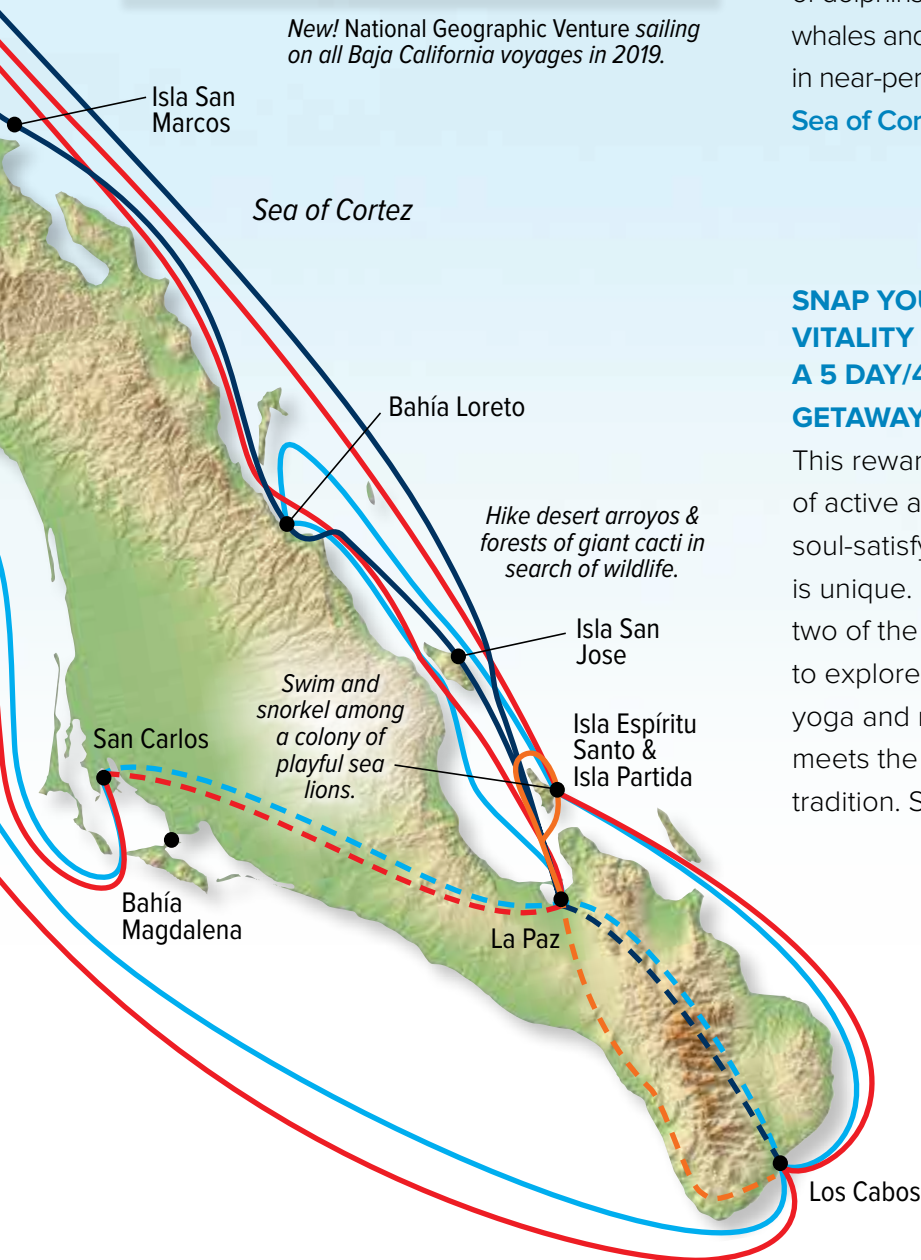




New! National Geographic Venture sailing on all Baja California voyages in 2019.

MARVEL AT A PARADE OF MARINE LIFE

One of the hidden wonders of the world, the Sea of Cortez explodes with life come spring. You'll have the whole sunlit expanse to yourself (and your fellow guests) at the peak of activity, when seabirds fill the sky and pods of dolphins, groups of whales and leaping mobula rays are found—often in near-perfect sea conditions. See [Spring in the Sea of Cortez](#) on pp 20-21.

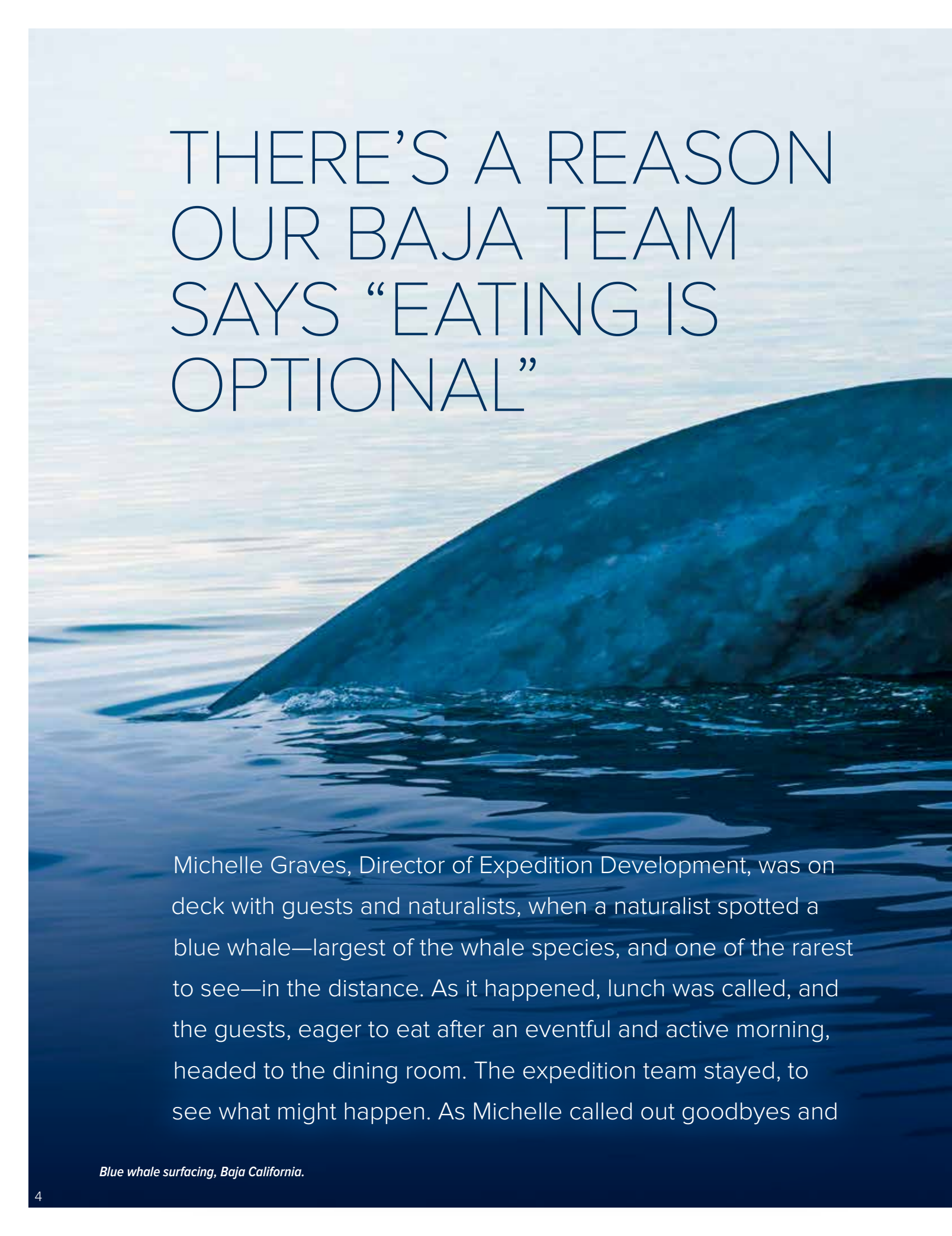


SNAP YOUR VITALITY BACK ON A 5 DAY/4 NIGHT GETAWAY

This rewarding blend of active adventure and soul-satisfying relaxation is unique. Head to Espiritu Santo and Isla Partida, two of the loveliest islands in the Sea of Cortez—to explore unsullied landscapes, enjoy open-air yoga and more. Put yourself where the desert meets the sea to restore, or create a new holiday tradition. See [Base Camp Baja](#) on pp 24-25.



Cruise past the spectacular arch at Lands End, then visit the historic town center of San Jose del Cabo.



THERE'S A REASON OUR BAJA TEAM SAYS “EATING IS OPTIONAL”

Michelle Graves, Director of Expedition Development, was on deck with guests and naturalists, when a naturalist spotted a blue whale—largest of the whale species, and one of the rarest to see—in the distance. As it happened, lunch was called, and the guests, eager to eat after an eventful and active morning, headed to the dining room. The expedition team stayed, to see what might happen. As Michelle called out goodbyes and



turned back to the deck rail, she gasped, as a blue whale, nearly the length of the ship, surfaced right under her. The team raced to the dining room to alert guests, not wanting anyone to miss out, and everyone came surging back for their thrilling, first-ever blue whale sighting.

Welcome to Baja California, where the desert meets the sea, the sea brims with exuberant life—and lunch waits for you!

THE PERFECT MOBILE BASE

With generous decks that take full advantage of the sun and ocean breezes, and create front row seats on the remarkable spectacle of marine life in Baja, our brand-new expedition ship *National Geographic Venture* is uniquely designed to make the most of being in this remote, soul-satisfying geography. Because there is much to discover here—cactus forests, desert islands, beautifully indented shores, a calm sea with vivid life beneath the surface, and more, *Venture* is equipped so you can explore—a fleet of Zodiacs,



kayaks, paddleboards, plus snorkeling gear for all, even hydrophones for whale listening and a bow camera for capturing bow riding dolphins. In addition, an undersea specialist/videographer captures video for you to enjoy in the comfort of the ship's lounge. And a Lindblad-National Geographic certified photo instructor is aboard to help you capture the moments at the heart of your experience.



CAMP FOR EXPLORING



National Geographic Venture out on expedition, launching Zodiacs ready to explore.

DOING WHAT EVER IT TAKES TO MAKE YOUR EXPERIENCE EXTRAORDINARY

Whether it means staying up until the wee hours to scan for passing whales of uncommon species so you won't miss out on rare sightings, taking advantage of an opportunity to race the ship amid a pod of leaping dolphins, or holding an impromptu star-gazing on a night beach, our team is dedicated to revealing Baja and making sure your experience is exceptional. Benefit from the personalities and knowledge of an expedition leader, naturalists, an undersea specialist, a Lindblad-National Geographic certified photo instructor and a video chronicler, plus a wellness specialist to enhance the revitalizing effects of life in the Sea of Cortez.

▶ LEARN MORE AT [EXPEDITIONS.COM/EXPERTBIOS](https://www.expeditions.com/expertbios)
FOR FULL BIOS ON OUR STAFF



Representing our expert team for the 2019 season, clockwise from left: Carlos Navarro, undersea specialist; Larry Prussin, expedition leader; Jim Kelley, expedition leader; Alberto Montaudon, naturalist; Linda Burback, naturalist and photo instructor.





NATIONAL GEOGRAPHIC

IN A LAND WITH PERFECT LIGHT, BENEFIT FROM EXPEDITION PHOTOGRAPHY

Make the most of the unrivaled photo ops of Baja California's wild islands, whales, dolphins, pelicans, and sea birds with our Expedition Photography program. Every expedition features a Lindblad Expeditions-National Geographic certified photo instructor who offers assistance, instructions and shooting tips in the field. Their expertise will inspire you and help you improve your skills—no matter your current skill or interest level—and ensure you return home with incredible photos.



NEW— ONBOARD GEAR LOCKER!

The inaugural season of *National Geographic Venture* will feature the debut

of the B&H Photo Video gear locker. Field test new glass, camera bodies and more during your expedition. And to get you ready you'll have access to special gear recommendations, packing tips and photography webinar. And check out teaching videos from our

annual photography event with B&H at www.optic2018.com.

Ask your expedition specialist for details.





Gray whale mother and calf surfaces close to guests.

*“THE BABY IS PUSHING US!
THE BABY IS LITERALLY PUSHING
THE BOAT RIGHT NOW!”*

DAILY EXPEDITION REPORT, 3.21.2017, BAJA:

So here we are in San Ignacio Lagoon, the middle of the three California gray calving lagoons. It's the smallest of the three lagoons, but it also has the most friendly whales. And what's happening here in the lagoons in Baja, is a very rare event indeed...about 200 whales are left in the lagoon in the latter part of March. Now the males have left and the whole goal of moms, at this point, is to get those babies ready for a huge swim. They're going to swim up the west coast of North America.



California gray whale.

[As we're watching from the deck, we feel the boat drift...] The baby is pushing us! The baby is literally pushing the boat right now! When you think about a California gray whale mother, bringing her calf and literally putting it on her body and lifting it up to be touched, to be rubbed along the side of the boat. We aren't just watching whales, we are interacting with them. And they are just as curious about us as we are with them.

What in the world is going on? We took these whales to the brink of extinction twice in the last two centuries. These are very sentient beings, these are very intelligent animals, they're mammals after all. They have very large, well developed brains. Why in the world would these whales now



approach the very shaped boats that were hunting them in times past? It's hard to say if they've forgiven or forgotten? ...There are a lot of theories about it, but no one really knows.

—MICHAEL NOLAN, LINDBLAD-NATIONAL GEOGRAPHIC
CERTIFIED PHOTO INSTRUCTOR

▶ SEE THE EXHILARATING VIDEO OF THIS ENCOUNTER AT [EXPEDITIONS.COM/BABYGRAY](https://www.expeditions.com/babygray)

Our expedition teams file Daily Expedition Reports (DERs) from the ship. Archived on our website, they're a great source for what it's like to be in that place, at that time of the year, and what to expect. Travel with us, and your friends and family can follow your adventure.

BAJA CALIFORNIA AND THE SEA OF CORTEZ: AMONG THE GREAT WHALES

10 DAYS/9 NIGHTS—ABOARD NATIONAL GEOGRAPHIC VENTURE
PRICES FROM: \$7,530 to \$12,490 (See page 27 for complete prices.)

Seeing gray whales in their natural habitat is one of the great delights of this voyage. In Laguna San Ignacio, venture out in small boats among these magnificent creatures. In the Sea of Cortez, search for a variety of whales, plus dolphins, blue-footed boobies, pelicans, cormorants and magnificent frigatebirds. You'll also snorkel among sea lions, join naturalists on hikes amid barrel cacti and sculpted sand dunes, and see a variety of desert flora and fauna.

EXPEDITION HIGHLIGHTS

- ▶ Explore the entrance of Bahía Magdalena as well as the breeding grounds of Laguna San Ignacio, and observe gray whales and their calves with our naturalists.
- ▶ Go snorkeling amid sea lions, brilliant blue damselfish, and schools of king angelfish.
- ▶ Kayak clear blue waters on the lookout for a variety of bird species including magnificent frigatebirds.
- ▶ Explore diverse landscapes, including sand dunes, a cactus forest and deserted islands.

EXPERIENCE & EXPERTISE



Our expert 10-person expedition team will illuminate the wonders of the Sea of Cortez from every possible angle. Your expedition leader, undersea specialist, Lindblad-National Geographic certified photo instructor and naturalists, plus a wellness specialist and video chronicler, are dedicated to ensuring an incredible voyage. Certain departures feature a National Geographic photographer or expert.

Visit our website to read staff bios for this expedition.

Gray whale, San Ignacio Lagoon.



DAY 1: DEPART US/SAN JOSE DEL CABO/LA PAZ

Upon arrival in San Jose del Cabo, transfer to La Paz and check in to the CostaBaja Resort & Spa, located on the shore of the Sea of Cortez, just south of Espíritu Island. (D)

DAY 2: LA PAZ/SAN CARLOS/EMBARK

This morning is on your own to relax and take advantage of the resort and spa amenities. Check-out in the late morning and depart for lunch at a local restaurant in La Paz. After lunch, transfer to San Carlos and embark the *National Geographic Venture*. (B,L,D)

DAY 3: BAHIA MAGDALENA

Explore the ever-shifting sand dunes of Isla Magdalena, on a cross-island walk to one of the most pristine beaches in the Pacific. Bird watching here can be excellent—magnificent frigatebirds, pelicans, cormorants, terns and great blue herons, ibis, whimbrels and willets are among the species we might see. It's not unusual to see forty species of birds in just one day along these fertile shorelines where they refuel for their destinations ahead. (B,L,D)

DAYS 4 & 5: LAGUNA SAN IGNACIO

Protected since 1993 as part of UNESCO's Whale Sanctuary of El Vizcaino, Laguna San Ignacio is one of the world's most important breeding sites for California gray whales. Each winter, during their long migration, gray whales travel south from their Arctic feeding

grounds to breed and raise their calves in these sheltered waters. Observe migrating whales from the ship and up close from local pangas and our Zodiacs. Watch for osprey, Brant geese and countless other breeding and migratory bird species, as well as bottlenose dolphins, during our explorations. (B,L,D)

DAY 6: AT SEA

As we travel south along the Pacific coast of the peninsula, there is a chance of seeing a wide variety of marine life, including the largest animal on Earth, the blue whale. Hear naturalist talks, and learn photography basics during a day at sea. (B,L,D)

DAY 7: LOS CABOS AND GORDA BANKS

This morning cruise past Friars Rocks at Land's End. Choose to visit the historic town center of San José del Cabo, or join a birdwatching walk along the local estero. The afternoon is spent aboard ship in the area of Gorda Banks seamount or La Fortuna, gathering places for whales, especially humpbacks, dolphins and other sea life. (B,L,D)

DAY 8: LOS ISLOTES AND ISLA ESPIRITU SANTO

At Los Islotes, don flippers, a mask and snorkel (which we'll gladly provide) and swim with curious sea lions. We have a leisurely afternoon to swim, kayak or hike at Isla Espíritu Santo. Brown pelicans, gulls and boobies are all part



of the landscape. Finish the day with a relaxing beach barbecue complete with a bonfire and a star-filled sky. (B,L,D)

DAY 9: EXPLORING THE SEA OF CORTEZ

Our plan is flexible today, as we explore some of the Sea's many uninhabited islands. Go ashore at Isla San Francisco, where a sweeping arc of white sand beach beckons you to try out our fleet of kayaks and standup paddleboards. Hike to the nearby ridge for unparalleled views, or explore nearby tide pools with your Naturalists. One of the larger islands in the Sea of Cortez, San Jose offers several landing possibilities depending on conditions and the whim of the moment. Photograph the ochre cliffs of the island's eastern shore, hike an "enchanted" arroyo, or visit the abandoned salt works to the west. Search for whales, dolphins and other marine life this afternoon among the islands of the southern Sea of Cortez. (B,L,D)

DAY 10: LA PAZ/DISEMBARK/SAN JOSE DEL CABO/HOME

Disembark in La Paz after breakfast and transfer to Los Cabos airport for flights home. (B)

EXPEDITION DETAILS

DATES: 2019 Jan. 12*, 19, 28*; Feb. 4, 13*, 20; Mar. 1*, 8

*These departures travel in the reverse order, from La Paz to San Carlos, making all the same stops.

NATIONAL GEOGRAPHIC EXPERT

Inventor of the Crittercam, biologist, conservationist, and Emmy Award-winning filmmaker **Greg Marshall** will join the Jan. 19 & 28, 2019 departures.



Guests kayaking, Espíritu Santo.



Beautiful desert night sky, highlighting the red sandstone formations of the Baja peninsula, Puerto Gato.



“THE BEST THING ABOUT AN EXPEDITION IS THE ELEMENT OF SURPRISE.”

DISPATCH POSTED ON RALPH HOPKINS' BLOG, BAJA:

Around midnight, Erasmo, our Hotel Manager, and Chef Eric were out looking at the moon on the ship's fantail, the lowest deck at the stern where we load Zodiacs. The sea was flat calm, reflecting the moon, the stars and several planets. Then, as if in a dream, a large male killer whale leaped from the water and looked them in the eye, its six-foot tall dorsal fin towering above them and reflecting in the moon light. “It was the most amazing thing ever,” Erasmo said, “I could have touched it, but instead I instinctively pulled Eric back from the rail. The animal was that close!”



They reported it to the bridge, and Expedition Leader, Sue Perin, gently woke the guests. There were five very curious killer whales, rolling on their sides to look up at us, swimming alongside for more than an hour. Although a third of the world's cetaceans are known to visit the Sea of Cortez, sightings of killer whales are relatively rare. For everyone, seeing killer whales in the moonlight was a dream come true. Even today's modern digital cameras have trouble handling dim moon light from a moving ship—so it was challenging. All the guests were shooting, trying tips and techniques. I shot a few frames with the ISO cranked up to 25,000 at a shutter speed of 1/4 second, good enough to make a couple of images of whale watching under the full moon! And hours later, after a highly eventful day, a few of us stayed up or woke up—for a total lunar eclipse.



—RALPH LEE HOPKINS, NATIONAL GEOGRAPHIC PHOTOGRAPHER AND LINDBLAD DIRECTOR OF EXPEDITION PHOTOGRAPHY

This photo expedition provides a 360° of the Sea of Cortez vistas and marine wildlife, while also offering an unrivalled immersion in nature photography, under the guidance of top National Geographic photographers and certified photo instructors.

BAJA CALIFORNIA: A REMARKABLE JOURNEY

16 DAYS/15 NIGHTS—ABOARD NATIONAL GEOGRAPHIC VENTURE
PRICES FROM: \$11,990 to \$19,890 (See page 27 for complete prices.)

Embark on a comprehensive photo expedition that explores both the Pacific side of Baja California and the islands in the Sea of Cortez. Venture into the gray whale lagoons for up close encounters, and then spend ample time exploring the Sea of Cortez and all its marine mammals. See scores of blue-footed boobies and pelicans, kayak into quiet grottos, and visit charming seaside towns.

EXPEDITION HIGHLIGHTS

- ▶ Get up-close views of gray whale mothers and their growing calves as they prepare for their journey back to Arctic feeding grounds.
- ▶ Kayak clear blue waters to search for wildlife, including magnificent frigatebirds, and possibly explore water-level caves by kayak.
- ▶ Snorkel the living sea: Observe large schools of vibrantly colored fish, swim among playful sea lions, and much more.
- ▶ With more time for adventure, rely on your expedition leader to take you where wildlife will be at its best—including the remote oceanic island of San Pedro Mártir with clouds of nesting seabirds and crowds of sea lions onshore, and expanses of sea where huge pods of dolphins gather.

EXPERIENCE & EXPERTISE

35+
YEARS
EXPERIENCE

Our expert 10-person expedition team will illuminate the wonders of Baja & the Sea of Cortez from every possible angle. Your expedition leader, undersea specialist, three Lindblad-National Geographic certified photo instructors and naturalists, plus a wellness specialist and video chronicler, are dedicated to ensuring an incredible voyage. A National Geographic photographer is on board to provide guidance and instruction throughout your voyage.

Visit our website to read staff bios for this expedition.

Kayaking the calm water in the Sea of Cortez.

DAY 1: DEPART U.S./SAN JOSÉ DEL CABO/LA PAZ

Upon arrival in San José del Cabo, transfer to La Paz and check in to the CostaBaja Resort & Spa. (D)

DAY 2: LA PAZ/SAN CARLOS/EMBARK

This morning is on your own, to relax and take advantage of the resort and spa amenities. Check-out in the late morning, and depart for lunch at a local restaurant in La Paz. After lunch, transfer to San Carlos and embark the *National Geographic Venture*. (B,L,D)



Elegant terns, Isla Rasa.

DAY 3: BAHÍA MAGDALENA

Explore the ever-shifting sand dunes of Isla Magdalena, on a cross-island walk to one of the most pristine beaches in the Pacific. Bird watching here can be excellent—magnificent frigatebirds, pelicans, cormorants, terns and great blue herons, ibis, whimbrels and willets are among the species we might see. It's not unusual to see forty species of birds in just one day along these fertile shorelines where they refuel for their destinations ahead. (B,L,D)

DAYS 4 AND 5: LAGUNA SAN IGNACIO

Laguna San Ignacio is a large bay and favored haunt of the gray whales in Baja. The ship will linger in this remote and important locale, while we observe the mother and calf pairs—from the ship, and from water level in our expedition landing craft and local pangas. For some reason, the whales here seem to be friendlier than they are elsewhere. It's not unusual for mothers and calves to approach our boats, the calves often playing hide and seek—sometimes even wanting to be petted and scratched. (B,L,D)



Common dolphin.

DAY 6: AT SEA

As we travel south along the Pacific coast of the peninsula, there is a chance of seeing a wide variety of marine life, including the largest animal on Earth, the blue whale. (B,L,D)

DAYS 7–15: ISLANDS OF THE SEA OF CORTEZ

Cruise past the spectacular Friars Rocks at Land's End. For those who wish, we will arrange a visit to the historic town center of San José del Cabo. Espíritu Santo, Los Islotes, San Pedro Mártir—these are some of the melodious names of these islands scattered throughout this beautiful sea. After over 20 years of exploration here, we are still discovering new places and experiencing exciting events: bowriding bottlenose dolphins, or sperm whales near our ship; a pod of fin whales feeding around a convergence zone. The best areas for whale watching remain consistent—the waters south of Isla Carmen, Canal de Ballenas up north, and near the mouth of Bahía Concepción. Whether



on the bridge of the ship, on expedition landing craft or kayaks, we will be in prime position to observe them all. (B,L,D)

DAY 16: LA PAZ/DISEMBARK/SAN JOSÉ DEL CABO/HOME

Disembark in La Paz after breakfast and transfer to Los Cabos airport for flights home. (B)

EXPEDITION DETAILS

DATES: 2019 Mar. 17 📷 30* 📷

📷 Photo Expedition

*This departure travels in the reverse order, from La Paz to San Carlos, making all the same stops.

NATIONAL GEOGRAPHIC PHOTOGRAPHERS



National Geographic photographer **Ralph Lee Hopkins** joins the March 17, 2019 departure, and National Geographic photographer and Marine

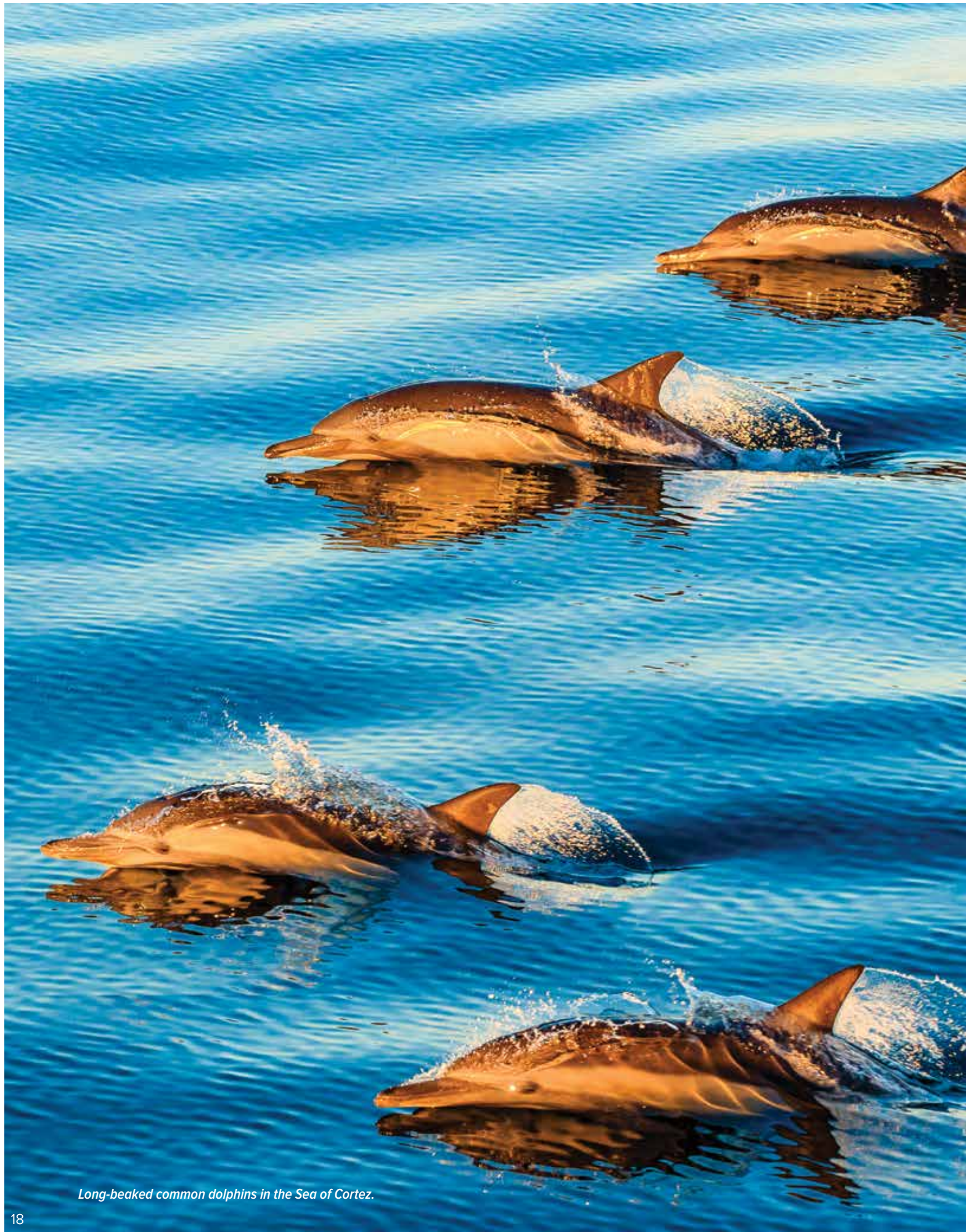
Biologist **Flip Nicklin** will join the March 30, 2019 departure.

Read their bios and find more experts on our website.

Learn more at
[expeditions.com/photo](https://www.expeditions.com/photo)



Guest photographing sand dunes, Bahía Magdalena.



Long-beaked common dolphins in the Sea of Cortez.



*“IT’S CALLED THE RICHEST
SEA IN THE WORLD, AND
IT DESERVES THE TITLE!”*

—SVEN LINDBLAD NARRATION, MARCH 2012, SEA OF CORTEZ

So, we wake up in the morning. I had asked the Captain to be about an hour off this island called Esteban. And then for the next two hours, we were (out in Zodiacs) in and among huge numbers of leaping dolphins... It was like a tornado had come through, the water was churned up so much. Then, the activity would end and the sea would be flat calm. We’d head the Zodiacs and lead the dolphins out in to the flat water so we could see their reflections. It was incredible. Sometimes you’d be literally looking up at a dolphin, the leaps were so high. People were getting amazing images. The dolphins were racing from one Zodiac to another—it was clear that they were enjoying this—and the faster you went, the more of them would come. It was the most incredible experience you could possibly imagine.

Then, all of a sudden, we spot some sperm whales—the whales species that figured prominently in Moby Dick, with the largest brain of any mammal, a rare sighting. We were patient and sure enough, they came to us, surfacing right near our Zodiacs. The naturalists asked us to lower our voices, and



then the only sounds you could hear, were softly murmured OMGs and whirring camera drives. Our naturalist repeated softly, “it is a privilege, a privilege” and the hushed spell over everyone indicated we agreed. I don’t think I’ll ever stop talking about this day for the rest of my life.

—SVEN LINDBLAD, FOUNDER & CEO, LINDBLAD EXPEDITIONS

▶ SEE THE VIDEO OF THIS DRAMATIC DAY IN BAJA AT [EXPEDITIONS.COM/SVEN_BAJA](https://www.expeditions.com/sven_baja)

WHALES & WILDNESS: SPRING IN THE SEA OF CORTEZ

8 DAYS/7 NIGHTS—ABOARD NATIONAL GEOGRAPHIC VENTURE

PRICES FROM: \$6,380 to \$10,500 (See page 27 for complete prices.)

Watch whales and dolphins from the deck of one of our intimate, 100-guest expedition ship and at water level from nimble expedition landing craft. Spring in the Sea of Cortez can be a great time to see pods of dolphins and various species of whales—blue, sperm, pilot or fin—all in the same week. Hike uninhabited beaches and desert landscapes. Observe myriad seabirds. Kayak in pristine waters, snorkel among reef fish and enjoy the serenity of a sunset beach barbecue under a starry sky. This unique journey is designed with a flexible itinerary, with our staff choosing sites based on conditions and to maximize wildlife sightings, adding a stimulating sense of adventure to each day.

EXPEDITION HIGHLIGHTS

- ▶ Search for pods of dolphins and various species of whales: blue, fin, sperm, humpback, pilot or Bryde's.
- ▶ Kayak, swim and snorkel with sea lions in pristine waters, and hike diverse desert landscapes.

EXPERIENCE & EXPERTISE



Our expert 6-person expedition team aboard *National Geographic Venture* and our 10-person team aboard *Venture* will illuminate the wonders of Baja California & the Sea of Cortez from every possible angle. Your expedition leader, undersea specialist, Lindblad-National Geographic certified photo instructor and naturalists, plus a wellness specialist and video chronicler, are dedicated to ensuring an incredible voyage.

Visit our website to read staff bios for this expedition.



California sea lions basking in the sun.

**DAY 1: HOME/LOS CABOS, MEXICO/
EMBARK LA PAZ**

Fly into Los Cabos and transfer to La Paz to set sail on the Sea of Cortez. (D)

**DAYS 2–7: EXPLORING THE SEA OF
CORTEZ**

Our routing is designed with flexibility in mind, to maximize opportunities for wildlife sightings. It will most likely include the islands and activities listed below, although the order may vary. (B,L,D daily)

**ISLAS SAN ESTEBAN AND SAN
PEDRO MÁRTIR:**

Walk up a desert wash, to search for desert birds and the endemic pinto chuckwalla—a fat, harmless desert lizard. Later visit Isla San Pedro Mártir, a 1,000-foot-high guano-covered island that is home to thousands of seabirds. Blue-footed boobies, red-billed tropicbirds, pelicans and frigatebirds are all found here.

ISLA SAN MARCOS:

At Isla San Marcos there is a beautiful cove for swimming, snorkeling, and kayaking. In the afternoon we are again in rich whale waters, near the mouth of Bahía Concepción where we stand a good chance of sighting several species of whales, particularly fin or sperm.

ISLA SAN JOSÉ:

One of the larger islands in the Sea of Cortez, San José offers several landing possibilities depending on conditions and the whim of the moment. Photograph the ochre cliffs of the

island’s eastern shore, hike an “enchanted” arroyo, or visit the abandoned salt works to the west.



Guests kayaking at Isla Espiritu Santo.

BAHÍA LORETO MARINE PARK:

This morning we’ll search for whales in the waters south of Isla Carmen, an area that has proven to be one of the best for finding blue whales, and often bottlenose and common dolphins. In the afternoon we visit one of the islands of Bahía Loreto Marine Park, with ample time for kayaking, snorkeling, stand-up paddleboarding and possibly hiking.



**LOS ISLOTES AND ISLA ESPÍRITU
SANTO:**

At Los Islotes, snorkelers have one of life’s great opportunities—swimming with graceful and curious sea lions. With a deeply indented shoreline and dramatically eroded cliff faces, Isla Espiritu Santo is perhaps the most beautiful island in the Sea of Cortez. We have a leisurely afternoon for swimming, snorkeling, kayaking, and in the evening, a beach barbecue under the desert sky.

**DAY 8: DISEMBARK LA PAZ, MEXICO/
LOS CABOS**

Disembark in La Paz and transfer to the airport in Los Cabos for flights home. (B)

EXPEDITION DETAILS

DATES: 2019 Apr. 14

**NATIONAL GEOGRAPHIC
PHOTOGRAPHER**

Travel with **Kirsten Luce** on the April 14 departure.



Humpback whale.



Views of Isla Danzante with kayaks and paddleboards on the beach ready for guests to use, enjoy and explore.



“BEST WAY I’VE EVER RUNG IN THE NEW YEAR—FEELING ALIVE IN WILDNESS!”

DAILY EXPEDITION REPORT, 12.31.2017, BASE CAMP BAJA

Perfect place name for the general feeling, as we begin the last day of the year in Bonanza Bay, a beautiful beach at the southeastern end of Espiritu Santo Island. The day was bright and sunny, with a light breeze and calm sea, and everybody celebrated in the most natural of ways. Some guests and naturalists explored the land, taking a long hike that culminated in a thrilling panoramic view from a cliff high above the Gulf of California. Meanwhile down on the beach, our wellness specialists conducted yoga classes—on the pristine white sand beach, and for the balance-confident, on paddleboards. Others choose to kayak the indented shoreline; while another contingent snorkeled, discovering the Bay’s creatures, from octopus to diverse fish. The lure of ice cold drinks and delicious snacks called everyone back to the ship.



And later, while the over-21 crowd enjoyed adult beverages of choice, compliments of the house, the under 21-year olds attacked a piñata with mucho gusto—sending a shower of treats onto the deck. And if a drone



were circling high above, this New Year’s Eve picture would be perfect: a small ship, glowing with light and festivity, alone in the deepening twilight of a magic place, where the desert meets the sea, and nature restores the human soul.

—ADRIAN CERDA, LINDBLAD EXPEDITIONS NATURALIST

▶ SEE WHAT OUR BASE CAMP BAJA OFFERS YOU AT [EXPEDITIONS.COM/BASECAMP](https://www.expeditions.com/basecamp)

BASE CAMP BAJA: ESPIRITU SANTO

5 DAYS/4 NIGHTS—ABOARD NATIONAL GEOGRAPHIC VENTURE

PRICES FROM: \$2,650 to \$5,090 (See page 27 for complete prices.)

A genuinely innovative hybrid—a 4-night getaway that feels like an authentic escape from the everyday. Use it to exult in sun and pristine nature; to de-stress or detox. Or to simply play or workout in the uninhabited wilds of Espiritu Santo and Isla Partida in the beautiful Sea of Cortez. With the brand-new *National Geographic Venture* as your mobile base camp, go where the wild things—and few others—are. Breathe deep, push hard, and chill at a BBQ under stars.

EXPEDITION HIGHLIGHTS

- ▶ Paddle Espiritu Santo's pristine coves and inlets on kayaks and standup paddleboards.
- ▶ Snorkel with sea lions, beachcomb desert shores, or explore by Zodiac.
- ▶ Zen out with Beach Yoga, or do Boot Camp workouts with a wellness instructor; or geek out on trail walks with naturalists.
- ▶ Hike high into hills for exhilarating panoramas of the Sea of Cortez; take your best photos ever.
- ▶ Choose from a menu of optional treatments and massages.

▶ **VIEW THE EXHILARATING WELLNESS EXPERIENCE ON A BASE CAMP BAJA ADVENTURE: [EXPEDITIONS.COM/BAJAWELLNESS](https://www.nationalgeographic.com/expeditions/bajawellness)**

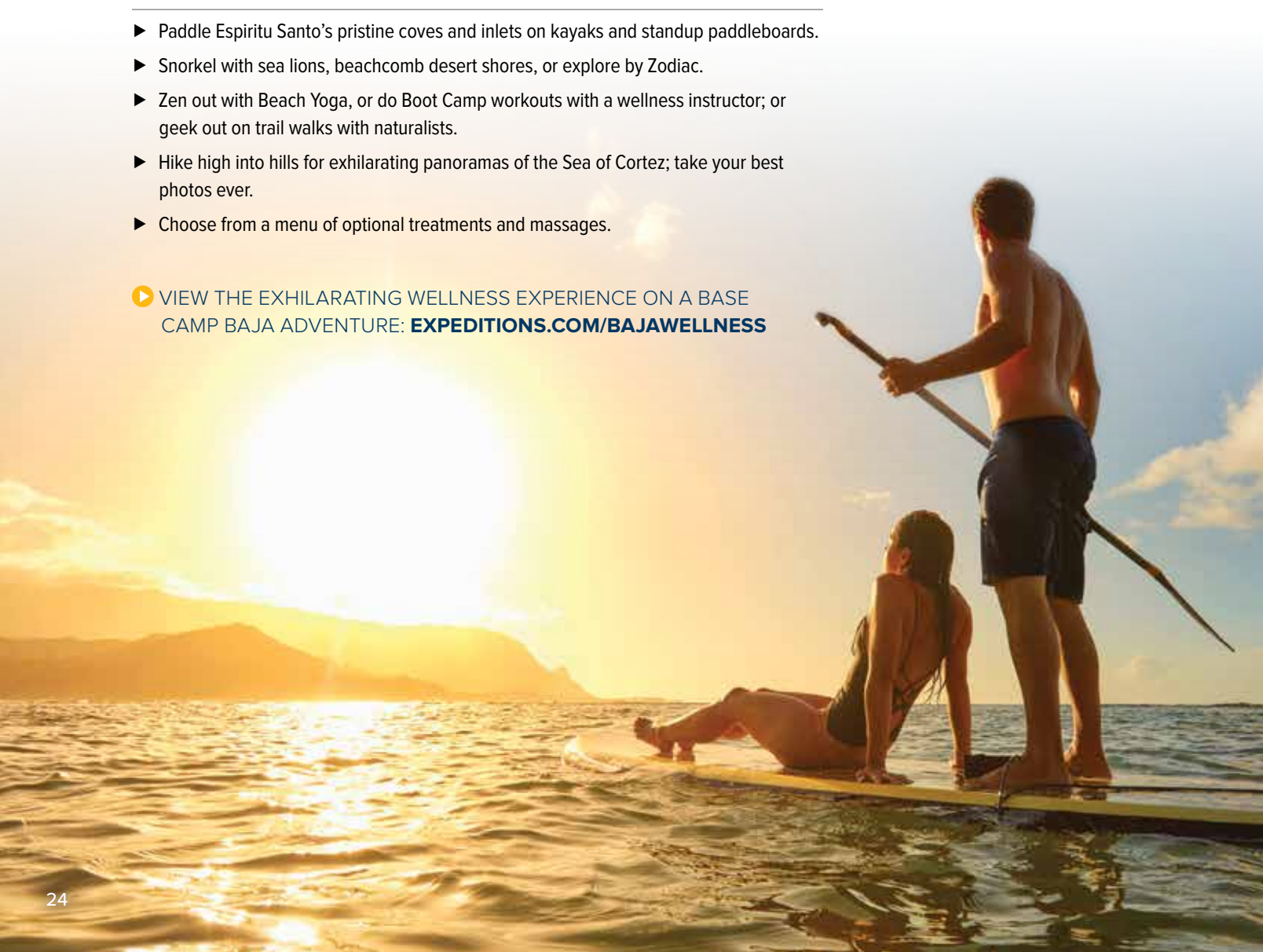
EXPERIENCE & EXPERTISE

30+
YEARS
EXPERIENCE

We've been exploring the Sea of Cortez for decades, and love the islands here.

Our team of naturalists is uniquely able to help you discover this stunning wild region. And to make the most of your time and energy, we'll be adding workout classes and relaxing treatments to the mix—a unique and rewarding combination.

Visit our website to read staff and guest speaker bios for this expedition.



**DAY 1: U.S./SAN JOSE DEL CABO/
LA PAZ/EMBARK**

Embark the *National Geographic Venture* in downtown La Paz. If you are flying in this day we have arranged transportation from the airport in San Jose Del Cabo. Set sail on arrival, for a sunset cruise of Bahía La Paz en route to Isla Espiritu Santo. (D)

DAYS 2-4: ISLA ESPIRITU SANTO

Wake up anchored in one of Isla Espiritu Santo's beautiful bays and watch the cliffs light up as your Wellness Specialist leads a morning yoga or qi gong class, on deck, or on shore.

For three full days, you'll have the luxury to explore as much or as little as you like, with the ship as your mobile base camp. Explore the dramatically eroded shoreline on a one-way kayak journey, or join a challenging

hike up a rocky arroyo to the crest of the island. Meander a different arroyo with your naturalists to learn details of the region's geology and natural history, then learn to standup paddleboard, or hone skills you already have. Spend a morning snorkeling with playful and curious sea lions, or photograph their antics from expedition landing craft. Relax with an afternoon massage, then go ashore for a beach barbecue dinner followed by a bonfire under the stars. However you choose to spend these days, you'll be rewarded with a sense of well-being that comes only from spending quality time in nature. (B,L,D)

**DAY 5: LA PAZ/DISEMBARK/
SAN JOSE DEL CABO**

Disembark in downtown La Paz this morning. Transportation is provided to Los Cabos airport for those departing Baja. (B)

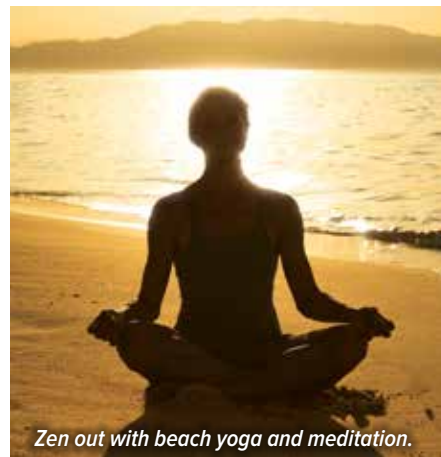


EXPEDITION DETAILS

DATES: 2018 Dec. 22, 26, 30; 2019 Jan. 3, 7



Mobula rays, Sea of Cortez.



Zen out with beach yoga and meditation.



Beach barbecue and bonfire under the stars.



Espiritu Santo, Baja, is where the desert meets the sea.



NATIONAL GEOGRAPHIC QUEST & NATIONAL GEOGRAPHIC VENTURE

CAPACITY: 50 cabins accommodating 100 guests
REGISTRY: United States. **OVERALL LENGTH:** 238 feet.

Sister ships *National Geographic Quest* and *National Geographic Venture* (launching in 2018) will be the latest additions to our fleet. Designed with over 50 years of expedition heritage and built in the U.S.A., both ships will set a new standard in exploration and comfort.

PUBLIC AREAS: Global gallery; fitness center; LEXspa; lounge with full service bar and facilities for films and presentations; observation deck; mudroom with lockers for expedition gear, and a partially covered sundeck with chairs and tables. Our “open bridge” provides guests an opportunity to meet our officers and captain and learn about navigation.

MEALS: Served in single seatings with unassigned tables for an informal atmosphere and easy mingling. Breakfast and lunch are wide selection buffets with chef action stations, while dinners are primarily served plated. Menu emphasizes local fare.

CABINS: All cabins face outside with windows or portholes, private facilities and climate controls. Category 4 cabins have step-out balconies.

EXPEDITION EQUIPMENT: A fleet of 8 Zodiacs and 24 kayaks, Remotely Operated Vehicle (ROV), hydrophone, splash-cam, underwater video camera, video microscope, paddleboards, snorkeling gear for all guests (where applicable).

SPECIAL FEATURES: Guest internet access, elevator, Lindblad-National Geographic certified photo instructor, a video chronicler, undersea specialist and ship physician.

WELLNESS: The vessel is staffed by a Wellness Specialist and features a gym with an elliptical machine, treadmill, exercycles, handweights and resistance bands. Treatments in the LEXspa are available by appointment.



Insets clockwise from top: The lounge, with 270° views, is the hub of the expedition community; Enjoy big views and the regional fare in the inviting and informal dining room.



Left to right: Category 5 cabin is our most spacious; Category 4 cabin with lower single beds (which can be converted to a Queen) and a private step-out balcony. Select cabins connect via an inside doorway.

CATEGORY 1: Main Deck #301-306 Cabins feature two lower single beds that can convert to a Queen, a writing desk and two portholes.

CATEGORY 2: Main Deck #307-315 Cabins feature two lower single beds that can convert to a Queen, a writing desk and two portholes.

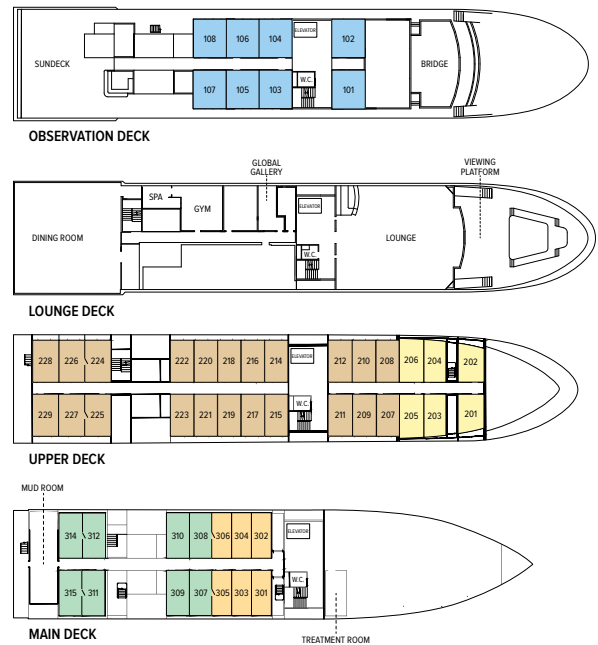
CATEGORY 3: Upper Deck #201-206 Cabins feature two lower single beds that can convert to a Queen, a writing desk and two large view windows.

CATEGORY 4: Upper Deck #207-229 Cabins feature two lower single beds that can convert to a Queen, a writing desk, sliding glass door, and small, private balcony.

CATEGORY 5 (SUITE): Observation Deck #101-108 Cabins feature two lower single beds that can convert to a Queen, large view windows, an expanded bathroom, writing desk, ample storage space, and a convertible sofa bed to accommodate a third person.

NOTE: Sole Occupancy cabins are available in Categories 1 and 2 only. Third person rates are available in Category 5 cabins at one half the double occupancy rate.

Connecting Cabins via internal doorway access: Main Deck: #312-314, #311-315, #306-308, #305-307; Upper Deck: #224-226, #225-227



Prices are per person, double occupancy unless indicated as solo.

ITINERARY	YEAR	CAT. 1	CAT. 2	CAT. 3	CAT. 4	CAT. 5 SUITE	CAT. 1 SOLO	CAT. 2 SOLO	ADVANCE PAYMENT	NOTE
Baja California and the Sea of Cortez: Among The Great Whales – Page 13	2019	\$7,530	\$8,330	\$8,900	\$9,930	\$10,960	\$11,290	\$12,490	\$1,000	Sample Airfares: Round-trip Los Angeles/Los Cabos/Los Angeles: Economy from \$370. Business from \$1,100.
Baja California: A Remarkable Journey – Page 17	2019	\$11,990	\$13,260	\$14,160	\$15,790	\$17,420	\$17,990	\$19,890	\$1,500	Sample Airfares: Round-trip Los Angeles/Los Cabos/Los Angeles: Economy from \$370. Business from \$1,100.
Whales & Wildness: Spring in the Sea of Cortez – Page 21	2019	\$6,380	\$6,990	\$7,480	\$8,340	\$9,170	\$9,570	\$10,500	\$750	Sample Airfares: Round-trip Los Angeles/Los Cabos/Los Angeles: Economy from \$370. Business from \$1,100.
Base Camp Baja – Page 25	2018/19	\$2,650	\$3,390	\$3,990	\$4,490	\$4,950	\$3,980	\$5,090	\$750	Sample Airfares: Round-trip Los Angeles/Los Cabos/Los Angeles: Economy from \$370. Business from \$1,098.

TAKE ADVANTAGE OF OUR SPECIAL OFFERS

BRINGING THE KIDS: We believe sharing an expedition with your kids or grandkids is a life-enhancing experience. So take \$500 off for each child under the age of 18.

GET THE GROUP ON BOARD: **SAVE 10%** on all Base Camp Baja departures when you gather a group of 6 or more under one booking. See page 24-25. **OR SAVE 5%** when traveling as a group of 8 or more people on all other departures. Take advantage of these great savings, while enjoying traveling with your friends and family. This savings is applicable on voyage fares only, and not on extensions or airfare. Deposit, final payment, and cancellation policies for group travel vary from our regular policies.



INCLUSIVE PRICING

We include just about everything you have the opportunity to do as part of your expedition aboard ship and ashore. The only things not included are those of a personal nature—alcohol, internet usage, tips to the crew, wellness treatments and other specialized arrangements.

ABOARD SHIP

- ✓ All meals and non-alcoholic beverages
- ✓ Cappuccinos, lattes & complimentary environmentally friendly refillable water bottle
- ✓ 24-hour coffee, tea & soda on demand
- ✓ Hors d'oeuvres & snacks during lounge recap
- ✓ Fitness center
- ✓ Fully stocked library
- ✓ The guidance and company of our expedition staff

ASHORE

- ✓ Meals on land, as indicated in itinerary
- ✓ Special access permits, park fees, port taxes
- ✓ Transfers to and from group flights
- ✓ The expertise of our expedition staff

ACTIVITIES

- ✓ All excursions
- ✓ Zodiac & kayak explorations
- ✓ Snorkeling and paddleboarding
- ✓ Lectures & presentations in the lounge
- ✓ Morning stretch classes with wellness specialist



BE PART OF OUR EXPEDITION COMMUNITY

Join in! Here's how:

- ✓ Check our daily blog for interesting posts, video clips and Photos of The Week: expeditions.com/blog
- ✓ Like us on Facebook: hear what our travelers have to say, get inspired and chime in: [facebook.com/LindbladExpeditions](https://www.facebook.com/LindbladExpeditions)
- ✓ Preview an expedition before you go or subscribe to our videos on [youtube.com/lindbladexpeditions](https://www.youtube.com/lindbladexpeditions)
- ✓ Follow us [@LindbladExp](https://twitter.com/LindbladExp) and our founder, Sven Lindblad [@SvenLEX](https://twitter.com/SvenLEX), on Twitter; and on Instagram [@SOLindblad](https://www.instagram.com/SOLindblad) for his interesting view of the world.
- ✓ Check out Expedition Snapshots from guests—and upload your own on the expeditions.com homepage.



NEW! BASE CAMP CHANNEL ISLANDS

A 5-DAY WILDNESS & WELLNESS GETAWAY

5 DAYS/4 NIGHTS STARTING AT \$2,490

ABOARD NATIONAL GEOGRAPHIC SEA LION

DATES: 2018 Oct. 17, 24



Joining our Base Camp Baja adventure this fall, our newest Base Camp getaway offers another revitalizing way to experience wildness and wellness. Board the *National Geographic Sea Lion* in Los Angeles, and leave the clang of contemporary life behind for the alluring remoteness of the Channel Islands. We'll actively explore three of the five wildlife-rich islands which make up Channel Islands National Park, plus beautiful Catalina Island. Kayak and hike unmarred landscapes, revel in pure nature, and rejuvenate mind, body, and soul with exhale's award-winning well-being programs.

▶ LEARN MORE ABOUT THIS EXHILARATING GETAWAY AT WWW.EXPEDITIONS.COM/CHANNEL



Clockwise: Catalina Island; fallen scrub oak skeleton; rare succulent, Greene's Liveforever, endemic to the Channel Islands; western gull chick.

RESERVATION INFORMATION

Terms & Conditions: For complete terms and conditions please visit www.expeditions.com/terms

Costs Include: All accommodations aboard ship or in hotels per itinerary or similar, all meals and non-alcoholic beverages aboard ship, meals on land as indicated accompanied by non-alcoholic beverages, air transportation where indicated as included, shore excursions, sightseeing and entrance fees, special access permits, transfers to and from group flights, use of kayaks, tips (including gratuities to ship's crew), taxes and service charges, services of a ship physician and services of our expedition staff. Unused services or items included in our programs are non-refundable.

Not Included: Air transportation (except where shown as included), extensions, passport, visa, immigration fees, meals not indicated, alcoholic beverages, travel protection plan, items of a personal nature, such as e-mail, voyage DVD, laundry.

Airfare: For all programs, airfare is an additional cost unless otherwise indicated. Sample airfares are subject to change. We will gladly assist in making your air arrangements for a \$50 per person service fee.

Reservations: To reserve your place, an advance payment is required at the time of reservation. The per-person advance payment amount is: \$2,500 for the 20-day voyage.

Travel Protection Plan: We strongly recommend that you take advantage of our Travel Protection Plan. This plan offers comprehensive coverage to protect you from cancellation fees, costs incurred due to trip delays/interruption, medical assistance, and damaged or lost baggage, and provides medical assistance and evacuation during your travels. Our Travel Protection Plan is available for U.S. and Canadian residents only, and may be purchased any time prior to final payment due date. Travel Protection premiums are non-refundable once plan is purchased.

Responsibility and Other Terms & Conditions: Certain provisions concerning, among other things, limitations of Lindblad Expeditions' and the National Geographic Society's liability for loss of property, injury, illness or death during the voyage will be provided to all guests on the ship's ticket sent prior to departure, and are also available on our website at www.expeditions.com/terms, or upon request. By registering for a trip, the guest agrees to all such terms and conditions.

Note: Itineraries and prices listed in this brochure are valid as of publication date, and are subject to change. Under normal conditions, the total expedition cost is guaranteed at the time of booking. However, the published price is determined far in advance of initial departure on the basis of then-existing projections of fuel and other costs. In the event we determine that current costs create an unsustainable financial model, including but not limited to increases in the price of fuel, currency fluctuations, increases in government taxes or levies, or increased security costs, we reserve the right to pass on these costs to you, to cover such unexpected increases. We will always provide a transparent accounting of the reason for such an increase in costs.

Cancellation Policy: Cancellation penalties may apply after payment is received. Please visit www.expeditions.com/terms for complete cancellation policies.

©2018 Lindblad Expeditions

Lindblad Expeditions and the Eye are the trademarks of Lindblad Expeditions. All rights reserved. NATIONAL GEOGRAPHIC and the Yellow Border are the trademarks of the National Geographic Society. All rights reserved.

Photo Credits: Terry Allen/Alamy, Blend Images/Alamy, Marc Cappelletti, Ken Carlson, Stewart Cohen, David Cothran, Eric Guth, George H. H. Huey, Ralph Lee Hopkins, Sven-Olof Lindblad, Jeff Litton, Michael Melford, Alberto Montaudon, Marc Muench, Carlos Navarro, Michael S. Nolan, Gary D. Paige, Rich Reid, Max Seigal, Shutterstock, SIME/eStock, Ian Strachan, Rikki Swenson, David Vargas.

For Reservations:

Contact your travel advisor or Lindblad Expeditions

1.800.EXPEDITION (1.800.397.3348)

Reservation Hours: Monday – Friday 9am – 8pm ET

Saturday & Sunday 10am – 5pm ET

Lindblad Expeditions, Inc., 96 Morton Street, New York, NY 10014

Phone: 212.261.9000 • Fax: 212.265.3770

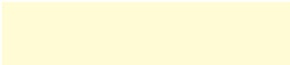
email: explore@expeditions.com For additional information and online reservations, visit us on the Web: www.expeditions.com



96 Morton Street
New York, NY 10014

PRSR STD
U.S. POSTAGE
PAID
LINDBLAD
EXPEDITIONS

Account Number:



1.800.EXPEDITION | WWW.EXPEDITIONS.COM

♻️ Printed on 10% recycled content paper with soy-based inks. We recommend that you pass this along for others to enjoy or recycle.

BAJ-068

BE THE FIRST ABOARD IN BAJA

Join us for the inaugural season of the brand-new *National Geographic Venture*. Departures begin December 2018 in the shimmering Sea of Cortez. See details on page 26-27.

