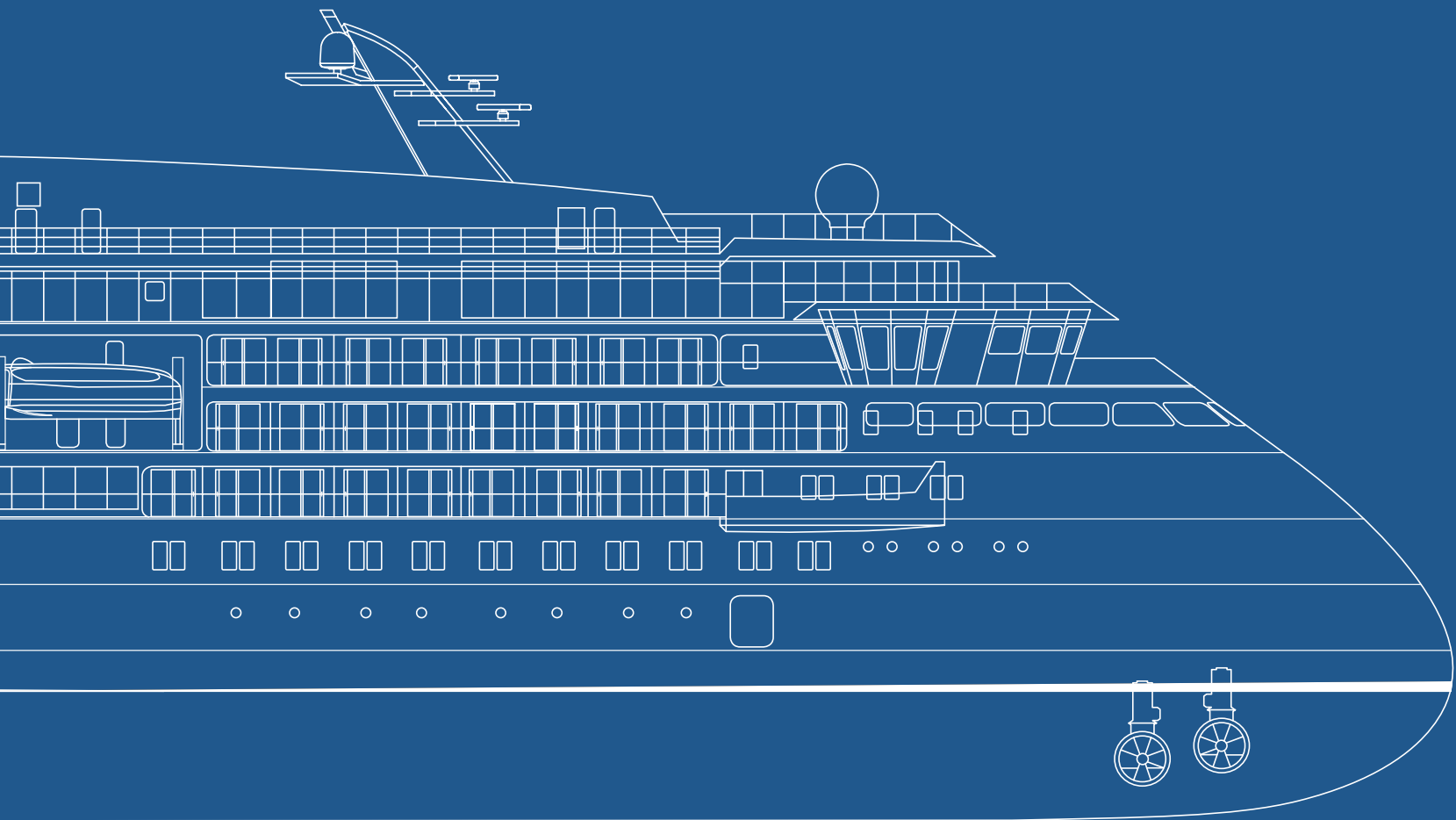


# NATIONAL GEOGRAPHIC ENDURANCE



INAUGURAL EXPEDITIONS | 2020/2021

# INTRODUCING NATIONAL GEOGRAPHIC

*This ship will be the most remarkable polar expedition ship ever built on a multitude of levels, including a commitment to expedition excellence over scale, carrying just 126 guests.*

—SVEN LINDBLAD, CEO & PRESIDENT, LINDBLAD EXPEDITIONS



## HIGHEST ICE CLASS

*The first new polar build in our 50-year history, National Geographic Endurance, named to honor legendary explorer, Ernest Shackleton, is a beast, with the highest ice class (PC5, Category A) of any purpose-built passenger ship. She will provide unprecedented access in polar environments.*



# ENDURANCE



## CARBON NEUTRAL

*We have been committed to sustainability and responsible tourism for decades. In 2018 we eliminated single use plastic aboard our fleet. And in 2019, we've become a carbon neutral company—offsetting the carbon footprint of our fleet, offices, employee travel worldwide, and beyond.*



## A+ SIGHTLINES

*The design of National Geographic Endurance significantly increases the joy of observing wildlife. Unobstructed downward sight lines, multiple walk-out areas from the Bridge and Observation Lounge, plus glass rails on the top deck create superb viewing conditions.*



## X-BOW® DESIGN

*The most striking feature of this new ship is her distinctive profile: the X-Bow®, designed to provide the smoothest, most comfortable ride imaginable, in all conditions. And the smoother ride results in greater fuel efficiency and fewer emissions for reduced environmental impact, as well.*



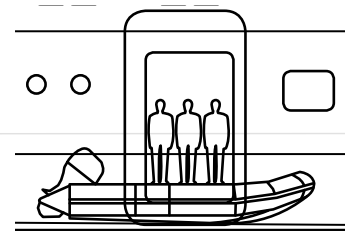


Our new loading bays will allow us to deploy our fleet of Zodiacs quickly to put our guests right into nature.



*“This ship embodies every innovation and validates every concept we’ve developed in over 50+ years of pioneering expedition travel. Our expedition teams will be able to use every aspect of National Geographic Endurance’s design and capabilities to create undreamed of opportunities for guests.”*

—SHAUN POWELL, FIELD STAFF & EXPEDITION OPERATIONS MANAGER





# NEXT-GENERATION EXPLORATION

Key features and more make *National Geographic Endurance* the world's most extraordinary platform for expedition adventure

- ✓ The highest ice class of any purpose-built passenger ship
- ✓ Omni-directional WESMAR HD860 sonar for scanning the sea floor in order to navigate poorly-charted waters
- ✓ Patented X-Bow® design for smoothest, most comfortable ride
- ✓ Advanced sustainability engineering: larger fuel tanks, a more fuel-efficient engine with cleanest exhaust gases, plus large water tanks make *National Geographic Endurance* more eco-friendly and able to range far beyond ordinary limits
- ✓ Optimal viewing and photography opportunities from unprecedented forward and down-the-sides sightlines, plus multiple observation decks and new observation wings
- ✓ Heated outdoor dining, observation and rejuvenation areas offer innovative opportunities to stay comfortably connected to the stellar polar outdoors and wildlife sighting opportunities
- ✓ A suite of expedition tools: Fleet of Zodiacs, kayaks, snowshoes, cross-country skis, an ROV, hydrophones, video microscope, underwater video technology, plus more expedition enhancements to be announced soon
- ✓ Hyper-efficient Zodiac loading for 'getting out there' more swiftly and safely



# A NEW DIMENSION IN EXPEDITION TRAVEL: CURATOR, ZARIA FORMAN

We are thrilled to announce this pioneering new expedition team role. Previously invited by Sven Lindblad to serve as artist-in-residence aboard *National Geographic Explorer*, acclaimed artist Zaria Forman now assumes a ground-breaking curatorship. Her mission is to mount a definitive polar art exhibition aboard the world's ultimate polar expedition ship, *National Geographic Endurance*. She has assembled *Change*, the first-ever, permanent ship-based installation of drawings, paintings, video, photography, and sculpture by a wide range of artists, including herself, dedicated exclusively to examining and expressing responses to vulnerable polar geographies. Using each area of the ship, deck by deck, from personal spaces to public, Zaria will display works and explore key themes—from polar light and the intimate geometries of vast geographies, to human history in polar regions and more—to give our guests the richest polar experience possible. See the following pages for a glimpse.





*Discover more at [expeditions.com/change](https://www.expeditions.com/change). Zaria is represented by Winston Wachter Fine Art in New York, NY and Seattle, WA.*

# GAIN A BROADER, RICHER UNDERS

*“Every piece of art is proof of the profound impact this environment can have on an individual. The exhibit will be a shared experience, enabling our guests to feel part of something much larger than their own individual observations.”*

—ZARIA FORMAN, ARTIST & CURATOR OF *CHANGE*

Imagine an image of a columnar ice core, extracted by a scientist from the Antarctic ice cap, running true height—the span of a four-story staircase. Imagine a resin and glass sculpture that invites you to enter an iceberg. These are the experiences *Change* will offer. The artists Zaria has chosen for the exhibit all have a deep connection with the polar regions. Whether their work is a romantic rendering, or a direct examination of the changes occurring, it's the magnificence of these frozen frontiers that inspired each artist.

Each piece will include artist statements and quotes—to give each viewer a deeper understanding of how and why these environments have changed the artist and their work. In addition, guided and self-guided ship-wide tours of the show will be offered to guests, and a catalogue will be available to spark memories long after the voyage.





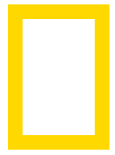
# TANDING OF POLAR PLACES



## DEEP POLAR CONNECTION

A thrilling section of the *National Geographic Endurance* art exhibit will illuminate National Geographic's deep connection to the polar regions—from rare archival films and photographs depicting the earliest polar expeditions funded by the Society, to contemporary stories evolving our awareness of climate change. *National Geographic* magazine was a pioneering force in early polar exploration; and played a major role in educating the world on geographies that were virtually unknown in the early 20th century. Helping to shape people's first impressions and perceptions of these places, the magazine changed its readers, as it broadened their understanding. In 1966, inspired by *National Geographic* magazine, Lars Eric Lindblad pioneered polar expeditions for citizen explorers. Now, *National Geographic Endurance* is the 21st-century embodiment of our joint commitment to explore and understand the world.

*Above: The show will include rare material such as the oldest film in the National Geographic archive. Twenty-three minutes of footage documents the 1903 Ziegler expedition sponsored by the National Geographic Society. It failed, but the film is a fascinating record.*



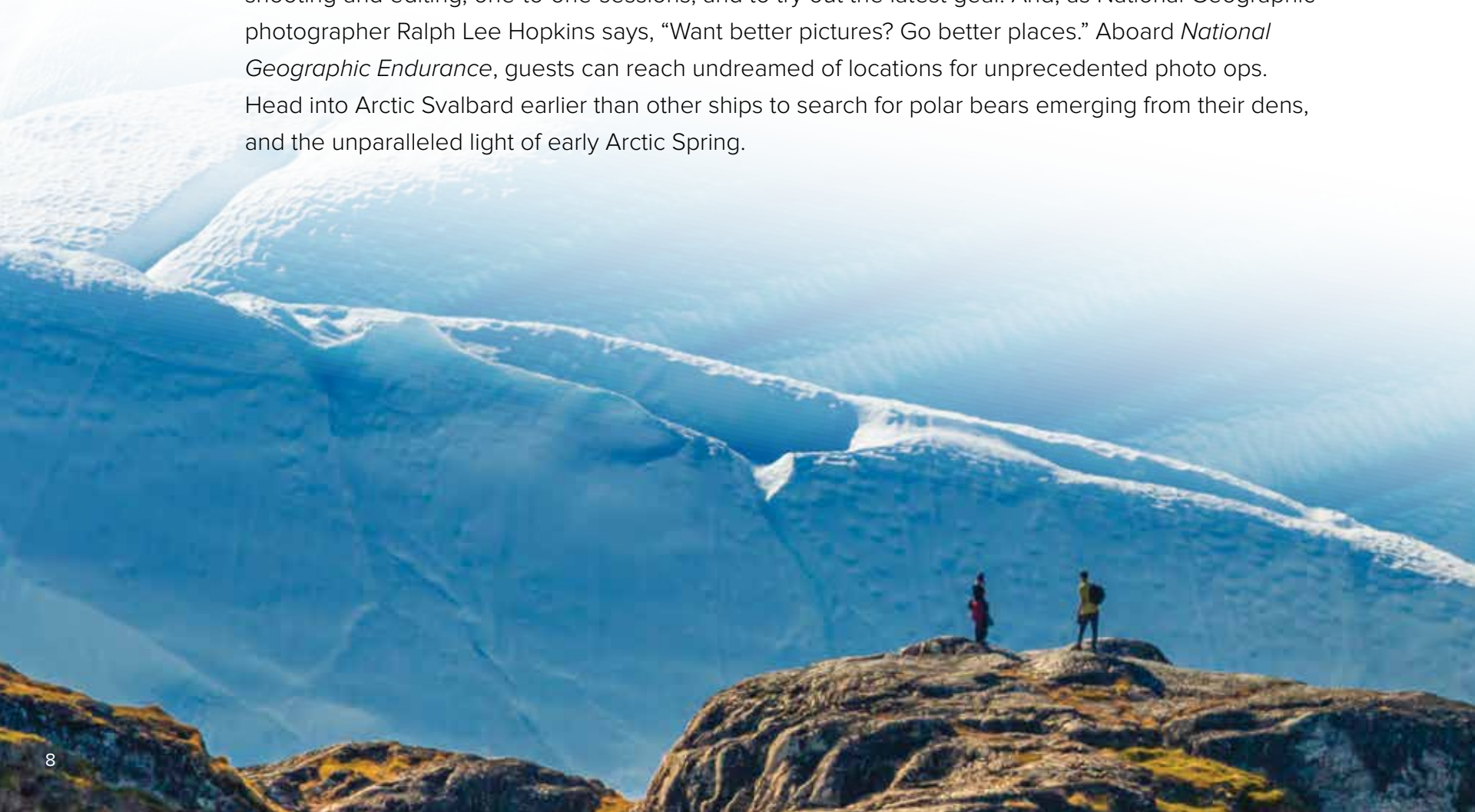
# THE LINDBLAD-NATIONAL GEOGRAPHIC ALLIANCE: VITAL TO YOUR EXPERIENCE

## EXPEDITION PHOTOGRAPHY

Since the Lindblad-National Geographic alliance was formed in 2004, top National Geographic photographers have accompanied guests on expeditions worldwide, to inspire and assist them. The program grew to include specially trained Lindblad-National Geographic certified photo instructors, invaluable for help with cameras, settings, tips in the field and more to help our guests take their photographs to the next level. Now, *National Geographic Endurance* enables more benefits for photo enthusiasts. The **Photo Studio**, a section of the Ice Lounge designed specifically for them, invites National Geographic photographers, certified photo instructors, and guests to gather for tips on shooting and editing, one-to-one-sessions, and to try out the latest gear. And, as National Geographic photographer Ralph Lee Hopkins says, “Want better pictures? Go better places.” Aboard *National Geographic Endurance*, guests can reach undreamed of locations for unprecedented photo ops. Head into Arctic Svalbard earlier than other ships to search for polar bears emerging from their dens, and the unparalleled light of early Arctic Spring.



**NATIONAL  
GEOGRAPHIC**



## MAKING A POSITIVE IMPACT

Lindblad-National Geographic travelers in the British Isles, Arctic Svalbard, Iceland, Greenland, and Canadian Maritimes have made donations to the Lindblad Expeditions-National Geographic Fund to support three global initiatives. Starting in April 2020, guests aboard *National Geographic Endurance* will be able to participate in the following projects, as well.

### ■ Pristine Seas

Following a 2013 Pristine Seas expedition to Franz Josef Land, in 2016 Russian Prime Minister Dmitry Medvedev announced the expansion of the Russian Arctic National Park by 74,000 square kilometers to include the Franz Josef Land archipelago, creating the largest marine reserve in the Arctic, at a total of 88,000 square kilometers. In 2015, Pristine Seas filmed Arctic wildlife and the traditional way of life of the Inuit—depicting ways in which Inuit culture is connected to the extraordinary local wildlife, and evaluating how the disappearance of ice will impact these populations and their relationships with one another.

### ■ Early Career Grants (ECGs)

ECGs support individuals leading their first field-based project, and fund bold and innovative projects spanning the fields of conservation, education, research, storytelling, and technology. Typically \$5,000-\$10,000, these grants enable the next generation to become tomorrow's leaders in marine and coastal conservation. In 2018, the LEX-NG Fund supported 44 Early Career Grantees, such as Edda Elísabet Magnúsdóttir, who studied the reproductive habits and foraging strategy of humpback whales overwintering in Iceland and Lindblad-National Geographic Cultural Specialist Hunter Snyder, who studied the unintended consequences of fisheries management decisions on individual fishers in Greenland. The LEX-NG Fund aims to award up to 40 ECGs annually.

### ■ Grosvenor Teacher Fellowship (GTF)

The GTF program is a professional development opportunity for pre-K–12 and informal educators from North America. An annual competitive application process is used to select educators and host them aboard our ships for a life-changing, field-based experience. Now in its 13th year, the GTF program has welcomed 265 Fellows from 49 states plus the District of Columbia, 6 Canadian provinces, and new this year, a teacher from a U.S. Department of Defense school. In 2019, the GTF program is sending 45 educators aboard Lindblad Expeditions-National Geographic ships worldwide.



*Above, from the top: Bull walrus undersea, Spitsbergen, Norway; Inuit hunter line fishing at the floe edge for Arctic cod, sculpin and halibut, Greenland; Grosvenor Teacher Fellows in Svalbard, Norway.*



*“Our hotel team provides superlative personalized service and care on all of our ships, but to be able to operate in this caliber of physical space, to offer a new level of dining and amenities is incredibly exciting for us. We have involved our hotel teams across the fleet and solicited valuable input from our guests to create incredibly comfortable and considered spaces for the places we explore. We can truly meet and exceed every expectation on National Geographic Endurance.”*

—BRUCE TSCHAMPEL, VICE PRESIDENT, HOTEL OPERATIONS





Clockwise from left: C. Green's, one of three dining options, features custom-grilled and lighter fare for breakfast, lunch or dinner; a pair of elevators makes it easy to navigate the decks and grander reaches of National Geographic Endurance; the conveniently-located Reception offers a peaceful place for personal transactions during the voyage.



# A NEW LEVEL OF GRACIOUS HOSPITALITY

Sleek and powerful on the outside, *National Geographic Endurance* is quietly luxe in the Scandinavian design tradition on the inside. From the streamlined modernism of her welcoming Reception and the distinctive style of her elevators and staircase, to the cossetting comfort of her public and private spaces, *National Geographic Endurance's* demeanor is a gracious dedication to your ease. With a total of six guest decks, *National Geographic Endurance* has over 10,000 square feet of glass to frame the spectacular polar scenery she transits—keeping you constantly connected to the view, while her considered décor and amenities, as you'll see, keep you, and just 125 fellow passengers, spaciouly and contentedly contained.





*“Unabashedly beautiful and luxuriously appointed, National Geographic Endurance’s interiors are superlative from a design and hospitality perspective. They uphold our traditions: making community (the Lounge) and insight (the ‘Circle of Truth’ podium) the center of expedition life.”*

—SVEN LINDBLAD, CEO & PRESIDENT, LINDBLAD EXPEDITIONS



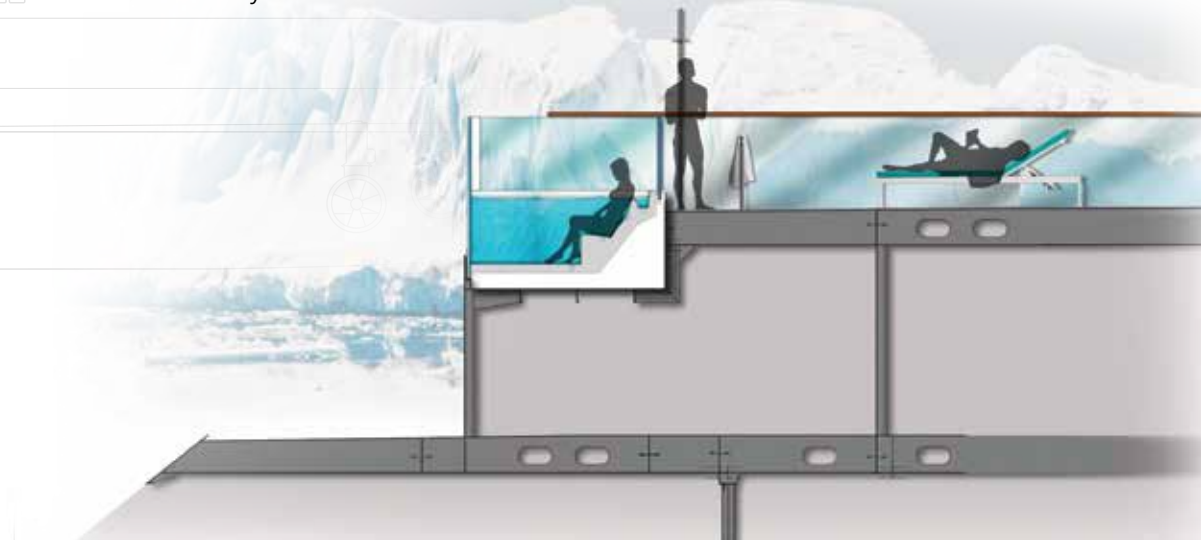


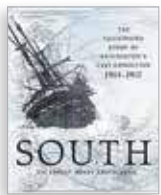
Clockwise from top left: The Ice Lounge is the expedition community hub for recap, presentations and sociability; photographers have a new share-and-learn space, with a B&H Photo Gear Locker for trying new tech; few hot tubs can offer a more thrilling backdrop than these aboard *Endurance*; and *The Den* provides the warm heart of the Observation Deck.



# FIRE & ICE ARE AT THE HEART OF OUR NEW SHIP

When you're in remote polar regions, it's nice to have your mother ship, library, restaurant, café, favorite bar, haven for intellectual stimulation, and comfortable bed at hand. Especially when every detail is designed for your enjoyment. Fire and ice are twin themes throughout *National Geographic Endurance*, in the color schemes and the feelings engendered by her spaces—from the 'chill' cool of the *Ice Lounge*, to the conversation-kindling warmth of *The Den*. Photographers will love their purpose-designed zone, created expressly for critiques and laptop gallery sessions, anchored by handsome cabinetry to house the B&H Photo Gear Locker, where we house exciting new gear for you to try out on loan. A thrilling 'habitat' is located on the outside aft deck where twin infinity hot tubs defy the ice with radiant warmth.





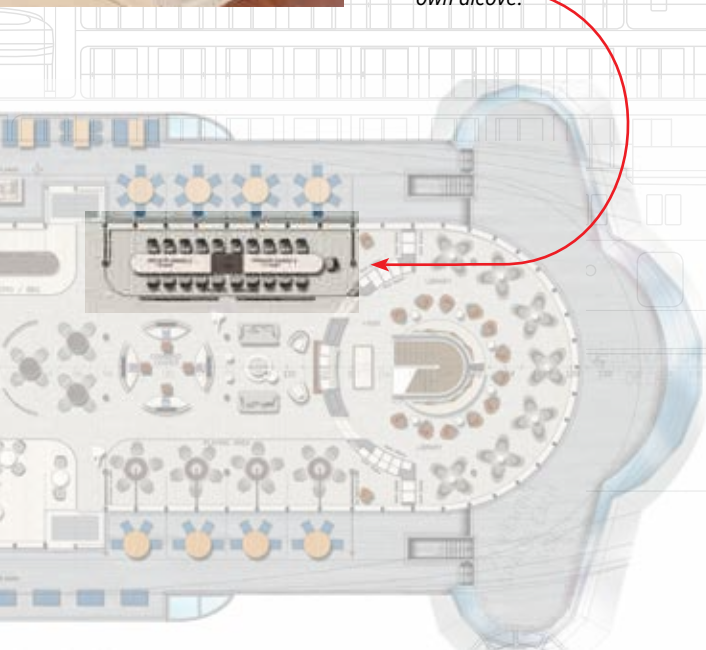
*“Breakfast at 8 a.m. consisted of a pannikin of hot hoosh made from Bovril sledging ration, two biscuits and some lumps of sugar. Lunch came at 1 p.m. and comprised Bovril sledging ration, eaten raw, and a pannikin of hot milk... Tea, at 5 p.m. had the same menu...The meals were the bright beacon...The glow of warmth and comfort produced by the food and drink made optimists of us all.”*

—ERNEST SHACKLETON, *SOUTH: THE LAST EXPEDITION OF SHACKLETON AND THE ENDURANCE*





Left: Rendering of main restaurant Two Seven Zero°, elegant in style but invitingly informal. Inset far right: C. Green's (larger rendering on pg 8), located within The Den, offers breakfast, lunch and dinner fare on the light side. Center: Floor plan of The Den showing the Chef's Table for chef-hosted small group dining tucked into its own alcove.



# TASTE: ANOTHER WINDOW ON THE WORLD

Dining aboard *National Geographic Endurance* in polar regions will be a far cry from what Shackleton experienced. Menus and choices will make “optimists of us all,” every day. Restaurant *Two Seven Zero*° surrounds superb dining with stellar views, and provides a window on vital expedition team members—our galley staff.

*C. Green's*, named for Shackleton's cook, offers an early riser breakfast, fresh salads and lighter fare, plus custom grilled selections at lunch and dinner.

The *Chef's Table* is an innovative approach to private dining. Over the course of each voyage, all guests aboard will be hosted by our Chef.

Intimate and interactive, each dinner features ‘polar theater’ in the form

of regionally inspired, sustainable, and inventive food.

In addition, daily high tea, hors d'oeuvres at recap, and BBQs in the *Winter Garden* (not shown) for *al fresco* dining in complete comfort, promise ‘anything but deprivation’ during our *National Geographic Endurance* expeditions.





# YOUR POLAR SANCTUARY

Polar exploration history is fraught with stories of hardship, deprivation and struggle. In juxtaposition to what's gone before, *National Geographic Endurance* offers a bastion of wellness. *The Sanctuary* takes a page out of Roald Amundsen's playbook (the sole explorer who made the race to the South Pole look athletic, graceful, more exhilarating than debilitating). It offers you the self-care options, and inspiration, to take yours to the next level. Discover spa treatments and therapies. Saunas, from high heat to milder to entertain you with stunning views. A panoply of training options in the gym. And a gorgeous yoga studio in which to greet each everlasting polar day.



*“To the extent our company has a mantra, it’s the ‘tonic of wildness.’ We believe, as Henry David Thoreau did, in the healing power of wild places for the human spirit.”*

—SVEN LINDBLAD, CEO & PRESIDENT, LINDBLAD EXPEDITIONS

*Above left: Spa welcome area. Above: an expansive serene place for yoga and stretch sessions. At right, top: the gym is fully equipped for fitness with weights, cardio and mobility equipment plus vitalizing views. At lower right: twin saunas, one for adepts at a classic temperature, the other less hot for cooler types, boast glass walls for soaking in million-dollar views; soothing treatment rooms are havens of personal renewal.*





Above: Each of the 12 grandly proportioned suites is named for an iconic polar explorer, complete with a plaque and a capsule bio to acquaint you with your individual hero. A slender privacy wall, with TVs on each side, divides the space for privacy yet admits gorgeous light. The roomy balcony is furnished with seating and a hammock for balmy days. At left: Sleek stone-clad bathroom features tub, rain shower; heated towel rack; Command Center features a National Geographic Atlas, a barometer, analog clock, digital tablet with daily programming and a generous array of USB and universal electrical ports for cameras and devices, plus a retractable lighted vanity mirror. Inset lower right: Shows large walk-in closet.



## THE LUXURY OF COMFORT

Elegantly imagined, with a sense of limitless space effortlessly incorporated into the design, the 13 cosseting, extra large balcony suites (featured in this rendering) impart a feeling of serenity. Warm creams, oatmeal and coral, soft textures, round corners, art that invites the eye to linger and our signature feather duvets, plus a walk-in closet and roomy stone-clad baths make each suite a haven (and a refuge from the midnight sun, thanks to dark-out shades). Full-height windows and furnished balconies bring the scenery to you. In the 56 standard cabins, azure accents meet polar vistas at the windows for a feeling of expansive yet cozy space (see page 42). Of the 56 standard cabins, 40 feature a balcony (including the 12 solo cabins). All of the 69 total cabins feature a Command Center, and either a comfortable sofa or reading chair.

*“Our authentic expedition heritage inspired the designers to create a Command Center, not simply a desk. Unique and useful.”*

—TREY BYUS, CHIEF EXPEDITION OFFICER

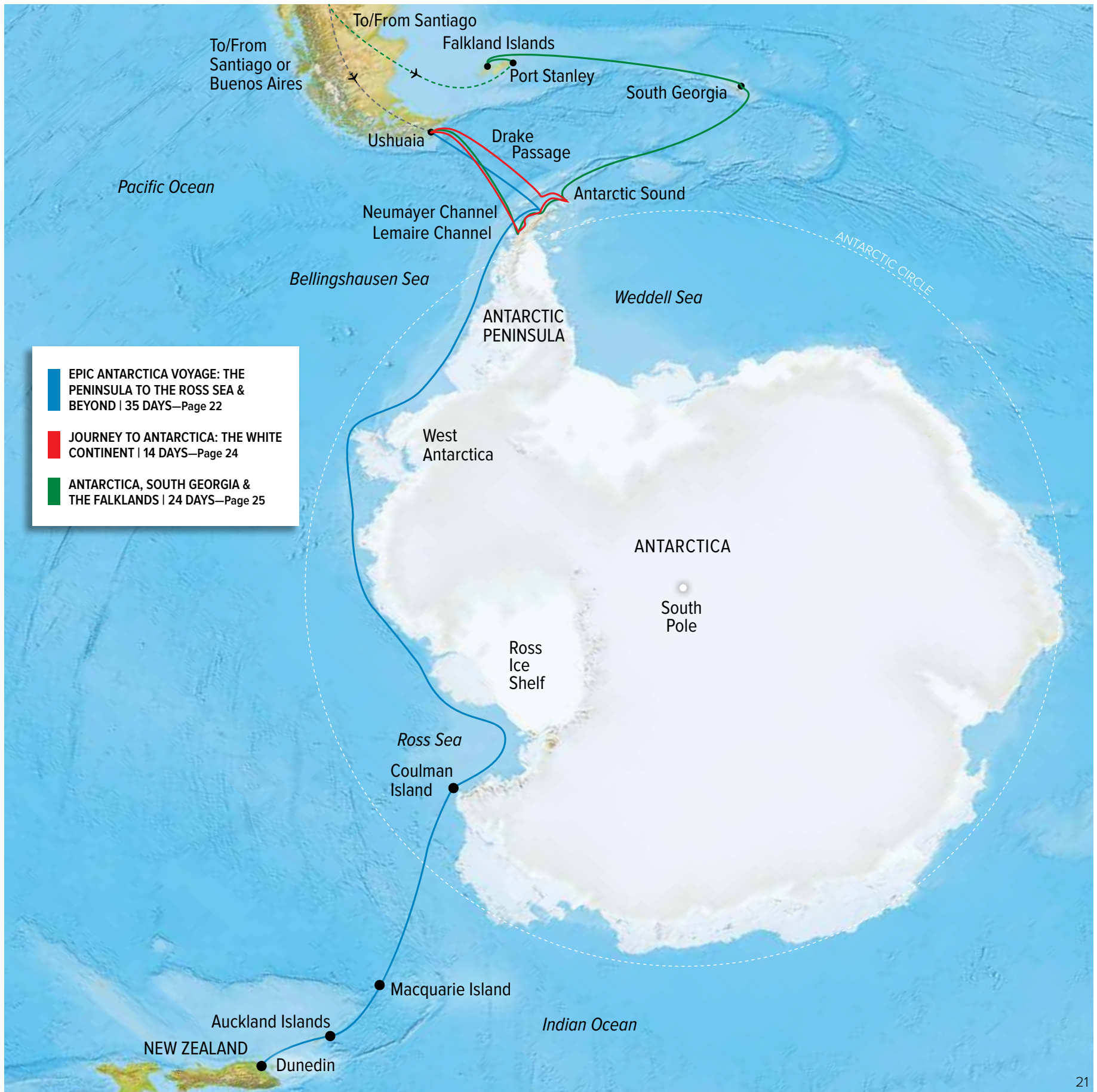


# ANTARCTICA ITINERARIES

National Geographic Endurance opens the vast untrammelled wildness of Antarctica to thrilling avenues of exploration on our new **Epic Antarctica** expedition. Able to range further and venture deeper into the ice, we'll trace a route line across the map that few humans will ever take. Her smooth-riding X-bow design offers peace of mind as we cross the Drake Passage on our classic **Journey to Antarctica** expedition, and her swift Zodiac loading platform means we'll spend more time among the vast penguin and seabird colonies of **Antarctica, South Georgia & the Falklands**. Discover the Seventh Continent safely and in unparalleled comfort and style.



*Humpback whale displays its fluke for Zodiac-cruising guests, Antarctic Peninsula.*



- EPIC ANTARCTICA VOYAGE: THE PENINSULA TO THE ROSS SEA & BEYOND | 35 DAYS—Page 22
- JOURNEY TO ANTARCTICA: THE WHITE CONTINENT | 14 DAYS—Page 24
- ANTARCTICA, SOUTH GEORGIA & THE FALKLANDS | 24 DAYS—Page 25

## A LINDBLAD EXPEDITIONS—NATIONAL GEOGRAPHIC FIRST



Discover more remarkable facts about the Ross Sea at [expeditions.com/ross](https://expeditions.com/ross).

With the highest ice class of any purpose-built passenger vessel, *National Geographic Endurance* provides unprecedented access to the wonders of an untrammled, and often ice-choked, polar region. Explore dramatic places rarely visited as we glide past the iridescent tabular icebergs of the Antarctic Peninsula, set foot on the frozen wilderness of West Antarctica, and discover pristine bays by kayak and Zodiac. Cruise past the formidable Ross Ice Shelf and encounter a flurry of rare wildlife—including huge colonies of king penguins and seals—in the rugged subantarctic islands. Our veteran Antarctic team will do whatever it takes—including manning the spotting scopes round the clock—to ensure you the most exhilarating discoveries possible.

*“The Ross Sea is probably the largest ocean wilderness left on our planet. It’s one of these rare places where humans are only visitors and large animals rule.”*

—ENRIC SALA, MARINE BIOLOGIST & LEADER OF THE PRISTINE SEAS PROJECT





## EPIC ANTARCTICA: FROM THE PENINSULA TO THE ROSS SEA & BEYOND

**35 DAYS, 32 NIGHTS | DATES: 2020 DEC. 27; 2021 JAN. 26\***  
 PRICING FROM \$48,800 (See page 43 for complete prices.)

Following in the footsteps of Scott, Ross, Amundsen and Shackleton, perhaps only a few thousand people in the history of the planet have ever made this voyage. See the big tabular icebergs of the Antarctic Peninsula, remote West Antarctica, and the spectacular Ross Ice Shelf. Explore the seldom-visited sub-Antarctic islands of New Zealand and Australia, UNESCO sites that are havens for wildlife. Paddle a kayak in pristine bays, and Zodiac cruise amid the bergs. Observe endemic royal penguins, gentoo and southern rockhopper penguins, and 100,000 pairs of king penguins on a single beach.

**DAYS 1 & 2:** U.S./Buenos Aires, Argentina

**DAY 3:** Fly to Ushuaia/Embark

**DAY 4:** At Sea/Drake Passage

**DAYS 5-9:** Exploring Antarctica

**DAYS 10-17:** West Antarctica

**DAYS 18-25:** Exploring the Ross Sea & Ross Ice Shelf

**DAYS 26 & 27:** At Sea

**DAYS 28-30:** Macquarie Island, Australia/At Sea

**DAYS 31-33:** New Zealand's Subantarctic Islands

**DAYS 34-35:** Dunedin, N.Z./Disembark/Auckland/U.S.

*\*This voyage travels in reverse.*



*Above: Royal penguins on Macquarie Island, sub-Antarctic Australia.*



## JOURNEY TO ANTARCTICA: THE WHITE CONTINENT

**14 DAYS/11 NIGHTS | DATES: 2020 NOV. 27, DEC. 7, 17\***

PRICING FROM \$16,290 (See page 43 for complete prices and holiday\* rates.)

Explore the world's last great wilderness in the company of a team of top naturalists celebrating Lindblad's 50+-year heritage in Antarctica. View magnificent mountains and huge glaciers. On shore, observe thousands of penguins: gentoo, Adélie, and chinstrap. Cruise aboard sturdy Zodiac landing craft in search of wildlife. Kayak in protected waters, paddling as penguins swim nearby.

**DAYS 1 & 2:** U.S./Buenos Aires, Argentina

**DAY 3:** Fly To Ushuaia/Embark

**DAY 4:** At Sea/Drake Passage

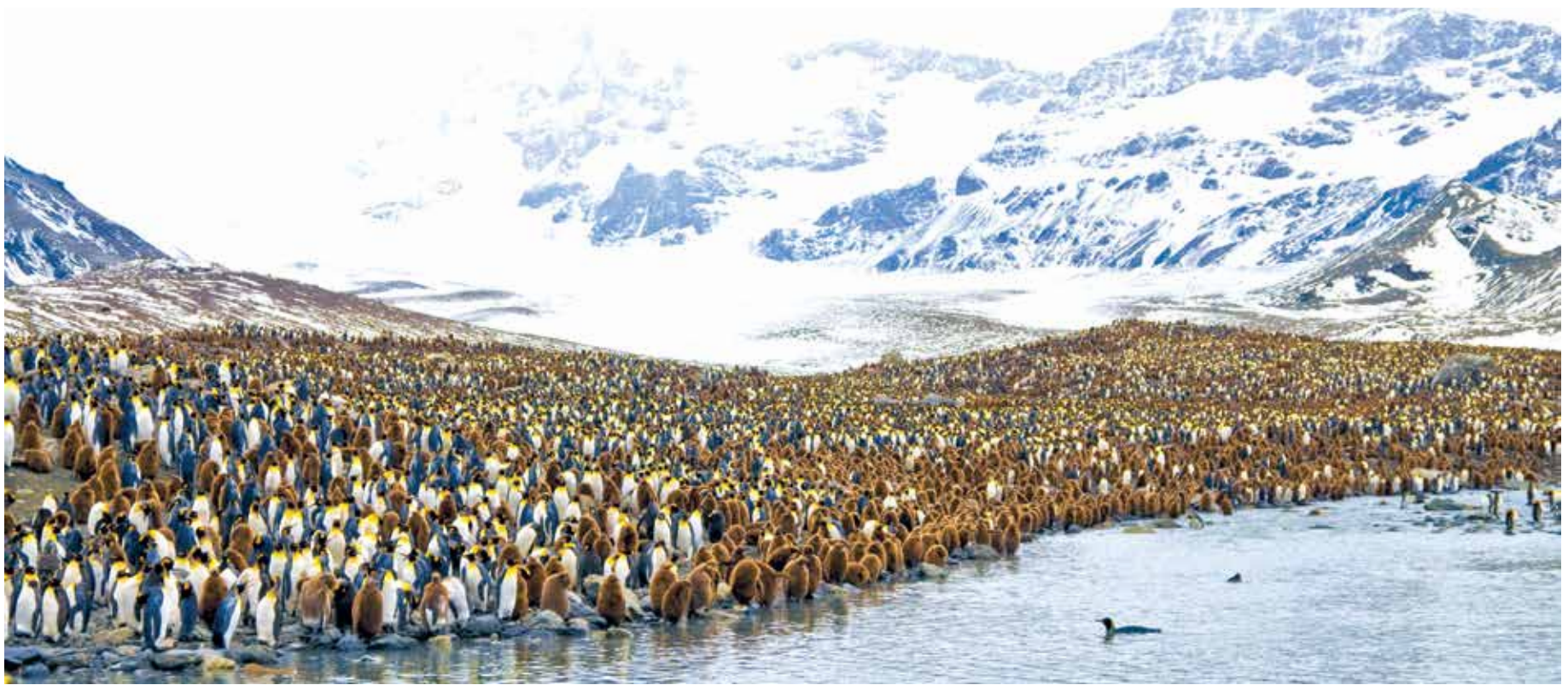
**DAYS 5-10:** Exploring Antarctica

**DAYS 11 AND 12:** At Sea

**DAYS 13 AND 14:** Disembark Ushuaia,  
Argentina/Buenos Aires/U.S.



*Above: Humpback whale in Wilhelmina Bay, Antarctica.  
Right: Guests enjoy a Zodiac cruise along icebergs off  
the Antarctic peninsula.*



## ANTARCTICA, SOUTH GEORGIA & THE FALKLANDS

**24 DAYS/21 NIGHTS | DATES: 2020 OCT. 18; NOV. 7\***

PRICING FROM \$28,580 (See pages 43 for details.)

This voyage has it all: the impossible beauty of Antarctic ice, the vast king penguin colonies of South Georgia, and the Falkland's amazing albatrosses. Spend five days discovering the Antarctic Peninsula. Stroll through lively crowds of penguins in stunning South Georgia, and hike the tundra of the Falkland Islands. Experience boundless wildlife and captivating beauty in the far South.

**DAYS 1 AND 2:** U.S./Santiago, Chile/Overnight

**DAY 3:** Fly to the Falklands/Embark

**DAY 4:** Exploring the Falklands

**DAYS 5 & 6:** At Sea

**DAYS 11 & 12:** At Sea

**DAYS 7-12:** South Georgia Island

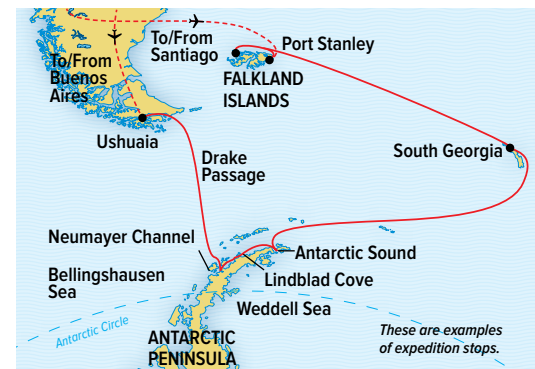
**DAYS 13 & 14:** At Sea

**DAYS 15-20:** Antarctica

**DAYS 21 & 22:** At Sea

**DAYS 23 & 24:** Disembark Ushuaia, Argentina/  
Fly to Buenos Aires/U.S.

\*This voyage travels in reverse.

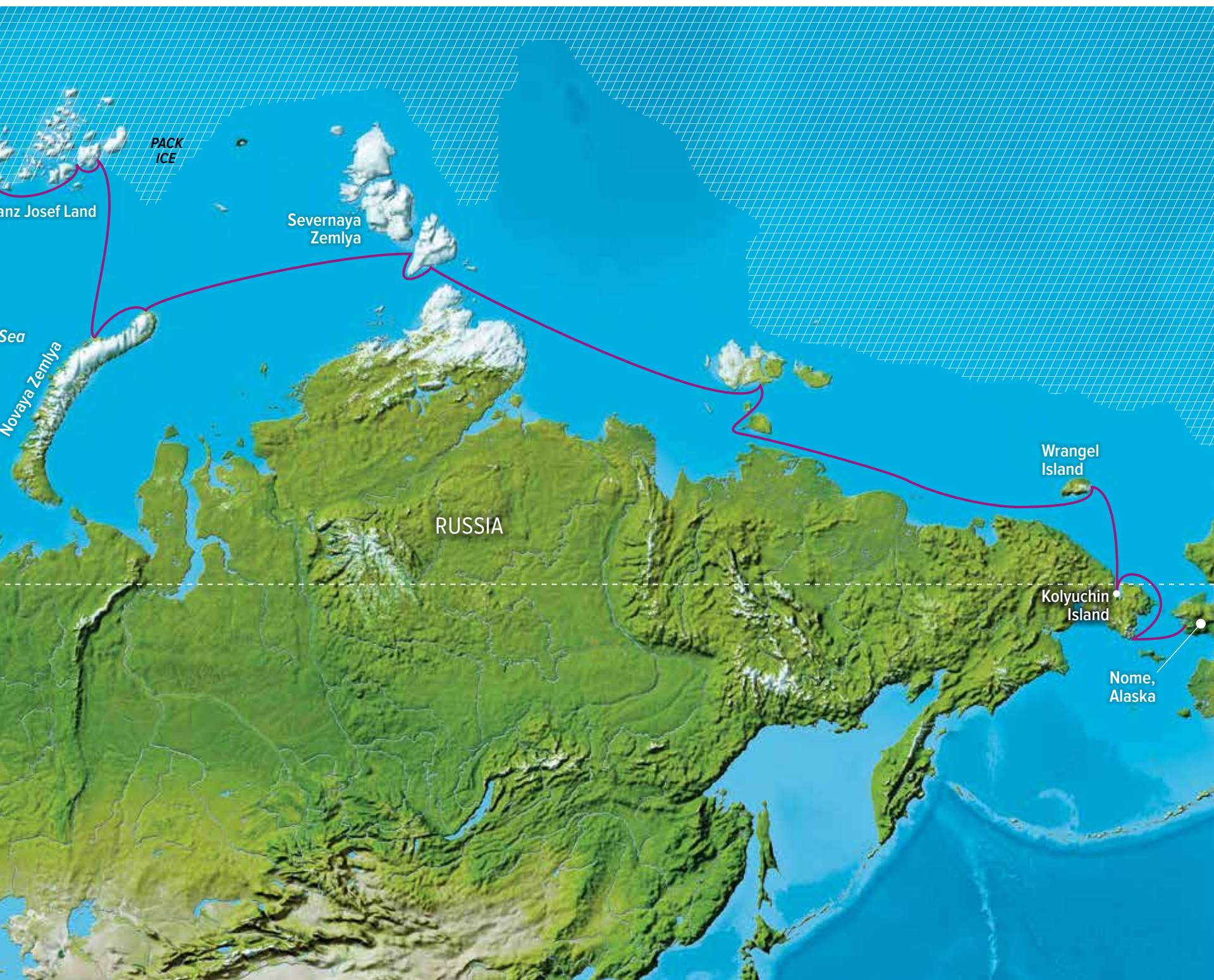


*Top: The incomparably vast colonies of king penguins on South Georgia, perched on the ocean, backed by stunning glaciers; Above: elephant seal 'weaners'.*

To go where few have gone, see what few have seen and experience what few can. That's what National Geographic Endurance is designed to do. By venturing earlier and penetrating farther into the world's most remote regions, we'll be able to more deeply understand and care for our planet. Choose your inaugural Arctic adventure.

- SVALBARD IN SPRING**  
11 DAYS—Page 28
- NORWAY'S FJORDS AND ARCTIC SVALBARD**  
17 DAYS—Page 30
- NORWEGIAN FJORDS & SCOTTISH ISLES**  
9 DAYS—Page 32
- NORWEGIAN DISCOVERY: SVALBARD & THE NORTHERN FJORDS** | 11 DAYS—Page 31
- COASTAL WONDERS OF NORWAY, THE FAROE ISLANDS, & ICELAND** | 17 DAYS—Page 34
- ARCTIC EXPLORATION: A VOYAGE TO ICELAND, EAST GREENLAND, & NORWAY**  
17 DAYS—Page 38
- NORTHEAST PASSAGE: AN UNFORGETTABLE VOYAGE FROM NORWAY TO ALASKA**  
26 DAYS—Page 36
- EAST GREENLAND: WILD SHORES OF THE HIGH ARCTIC** | 20 DAYS—Page 40
- ICELAND'S WILD WEST COAST TO EAST GREENLAND** | 13 DAYS—Page 41





## EXCERPT FROM SVEN LINDBLAD'S RECONNAISSANCE REPORT



*“We’ll take National Geographic Endurance to Svalbard in April 2020. She’s being built for exactly this kind of opportunity.”*

—SVEN LINDBLAD, CEO & PRESIDENT, LINDBLAD EXPEDITIONS

I first visited Svalbard in July 1973. An earlier visit was impossible due to impenetrable sea ice. Now, 45 years later, the Arctic presents a very different challenge: Where, and when, can sea ice still be found?

I explored Svalbard aboard an icebreaker from March 18 to 25, 2018—two months earlier than anyone aboard had ventured this far north. On our second day, we reached 80° north latitude, 600 miles from the North Pole. Alone in this vast, beautiful wilderness, we were mesmerized. Arctic light played on the ice, on the sea. We were overjoyed by the pure air. Navigating the ice edges, we encountered walrus and ringed seals. One day, we spotted seven bears but didn’t approach, to avoid carving up the ice they’d need for as long as it remained.

As our team disembarked, we knew we’d witnessed dramatic change. Arctic sea ice is no longer a given when it should be. It’s clear that it will continue to diminish with relentless, perhaps accelerating, speed. But while we profoundly lament this march toward ice extinction, being here when we were—a time unthinkable a decade ago—was a wondrous and precious opportunity.



## SVALBARD IN SPRING: POLAR BEARS, ARCTIC LIGHT & EPIC ICE

**11 DAYS, 9 NIGHTS | DATES: 2020 APR. 2, 9, 16, 23**

PRICING FROM \$11,600 (See page 43 for details.)

Voyage deep into and around the Svalbard Archipelago where Sven Lindblad and his team went on reconnaissance in March 2018. See what they discovered: Svalbard the way few have. A true Arctic refuge—covered in snow, surrounded by sea ice, where polar bears freed from their winter sleep stalk seals on the ice. Be stunned by the astonishing light, as the spring sun mounts ever higher in the Arctic sky each day. And capture it all with ace photographers.

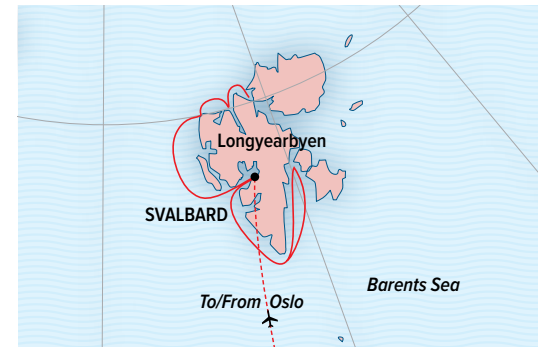
**DAYS 1 & 2:** U.S./Oslo, Norway

**DAY 3:** Oslo/Longyearbyen/Embark

**DAYS 4-8:** Svalbard

**DAY 9:** Longyearbyen/Disembark/Oslo

**DAYS 10 & 11:** Oslo/U.S.



*Above: Photographers—prepare to be in awe of the ever-changing light and icescapes you will encounter during spring in Svalbard. If conditions permit, walk on the frozen sea in the Arctic. Right: Spring is the time that bears are emerging from their dens and adult males are out hunting.*



## NORWAY'S FJORDS & ARCTIC SVALBARD

**17 DAYS, 15 NIGHTS | DATES: 2020 APR. 30\*, MAY 29**

PRICING FROM \$19,420 (See page 43 for details.)

On a carefully-crafted itinerary that we've perfected over time, set out to explore some of the most stunning landscapes of the north. Follow Norway's fjord-carved coast from charming Bergen to Tromsø and Bear Island, arriving at the icy shores of Svalbard. Be among the first travelers to enjoy the *National Geographic Endurance's* splendid spaces and utilize its exploration tools, kayaking deep into narrow inlets, hiking windswept islands, and searching for iconic wildlife—including the majestic polar bear.

*This expedition brings together a unique view of Norway from the Svalbard archipelago where polar bears, Arctic fox, and reindeer are found to the fjord-carved, scenic fishing villages of the mainland.*



**DAYS 1 & 2:** U.S./Bergen, Norway/Embark

**DAY 3:** Nordfjord

**DAYS 4-6:** Exploring the Fjords of Norway

**DAY 7:** Lofoten Islands

**DAY 8:** Tysfjorden

**DAY 9:** Tromsø

**DAY 10:** Bear Island

**DAYS 11-15:** Exploring Svalbard

**DAYS 16 & 17:** Longyearbyen/Disembark/  
Oslo/U.S.

*\*This departure travels in reverse.*







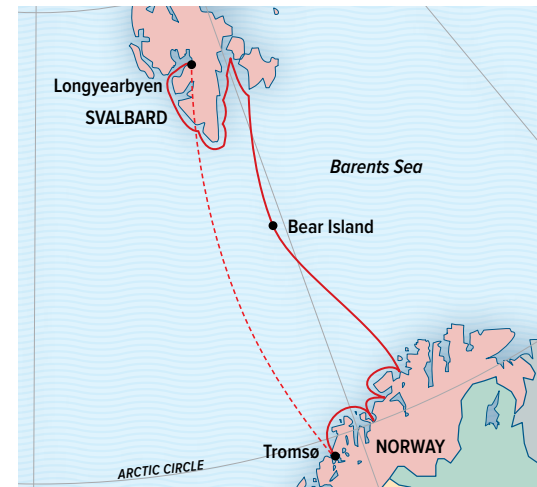
## NORWEGIAN DISCOVERY: SVALBARD & THE NORTHERN FJORDS

**11 DAYS, 9 NIGHTS | DATE: 2020 JUN. 11**

PRICING FROM \$10,290 (See page 43 for details.)

On this compact version of our Norway's Fjords and Arctic Svalbard itinerary, discover the very best of this exhilarating region, including seldom-seen Bear Island. Here, you'll experience one of the world's top-rated Zodiac rides as you soak up the majesty of some of the largest bird cliffs in all of the Northern Hemisphere. Add in the jaw-dropping scenic beauty of Norway's fjord-carved coastline, Svalbard's iconic wildlife and breathtaking icy vistas—plus the thrill of being first aboard a brand-new ship—and you've got the makings of an unforgettable adventure.

- JUN. 11 & 12:** U.S./Oslo, Norway
- JUN. 13:** Oslo/Longyearbyen/Embark
- JUN. 14-16:** Svalbard
- JUN. 17:** Bear Island
- JUN. 18:** Sandefjord/Sørøya
- JUN. 19:** Senja Island
- JUN. 20 & 21:** Tromsø/Disembark/Oslo/U.S.



*Above: This expedition provides unique opportunities from some of the best Zodiac rides among the mist-shrouded bird cliffs of Bear Island and Spitsbergen (featured). Right: Svalbard is one of the most reliable places on the planet to see polar bears in their natural habitat—the sea ice.*

## ACTIVELY EXPLORING CULTURE & HISTORY



Above: Gannets nesting colony, Isle of Unst, Shetlands, Scotland. Below right: Skara Brae, Orkney.

If you love history and culture and prefer your explorations far-ranging and active, this itinerary will transport you on an all-five-senses adventure. Hike or bike against a backdrop of snow-dusted mountains, emerald valleys, and fruit orchards as we explore the second longest Norwegian fjord; cruise below the towering Cliffs of Noss amid thousands of puffins, guillemots and kittiwakes. Paddle quiet bays and inlets. Cruise past the U.K.'s northern-most lighthouse at Unst and explore the prehistoric settlement of Jarlshof to examine Bronze Age ruins and Viking longhouses or go birdwatching on Lerwick.

*“On Orkney, we visit the remains of Europe’s oldest prehistoric village, the Stone Age Skara Brae, and the megalithic stone circle, the Ring of Brodgar. These sites speak to us of that momentous transformation, the Neolithic revolution, that saw the beginning of settled agricultural communities replace hunter-gatherers.”*

—DAVID BARNES, HISTORIAN





## NORWEGIAN FJORDS & SCOTTISH ISLES

**9 DAYS, 7 NIGHTS | DATES: 2020 MAY 15, 22\***  
 PRICING FROM \$7,970 (See page 43 for details.)

*National Geographic Endurance* follows in the wake of Vikings—traversing a legendary route across the North Sea that takes you past Norway’s staggering ice-carved fjords and snow-dusted mountains to the dramatic landscapes of the Scottish Isles. Along the way explore an array of remote, ancient-day sites—Bronze Age ruins on the rugged Shetland Islands, the Viking tombs of Orkney, the 5,000-year-old settlement of Skara Brae—all juxtaposed against the dynamic, bustling cities of Bergen and Edinburgh.

- DAYS 1 & 2:** U.S./Bergen, Norway/Embark
- DAY 3:** Hardangerfjord
- DAY 4:** Hidra/At Sea
- DAY 5:** Isle Of Noss and Lerwick, Shetland Islands, Scotland
- DAY 6:** Unst
- DAYS 7 & 8:** Orkney
- DAY 9:** Edinburgh/Disembark/U.S.

*\*This departure travels in reverse.*

*Above: Discover the ancient and mysterious UNESCO World Heritage Site, Ring of Brodgar and other archaeological sites in the Shetlands and Orkney. Right: Walk, kayak or Zodiac through ice-carved fjords and verdant villages.*



## ACTIVELY EXPLORING CULTURE & HISTORY



*Gásadalur, on the west-side of Vágar in the Faroe Islands.*

Music. Food. Culture. The ties that bind become bridges on this voyage, taking us inside the lives of the inhabitants of thrillingly remote islands. Look forward to extraordinary music, dining and people-to-people experiences, as we explore them. And, expect the unexpected, as Jen Martin, our Expedition Development Director learned on her recent recon. “I expected the Faroes to resemble Shetland, Orkney, or even Iceland. I was completely wrong. And I was completely blown away. The Faroese are friendly, with great senses of humor. Everyone I met was interested in knowing what brought me there.” Each island group we visit has its own distinct culture, language, and traditional foods. Meet individuals, and discover all the intriguing variations within a common Viking ancestry.



*Special musical guests, Ylija, performing for our guests.*

*“I have curated our Iceland trips for some time now, introducing guests to singers and songwriters incorporating rich folk traditions into hip new contexts. Now, I’m delighted to broaden the mission—to create exclusive musical experiences in the diverse regions we explore on this voyage.”*

—JACOB EDGAR, ETHNOMUSICOLOGIST



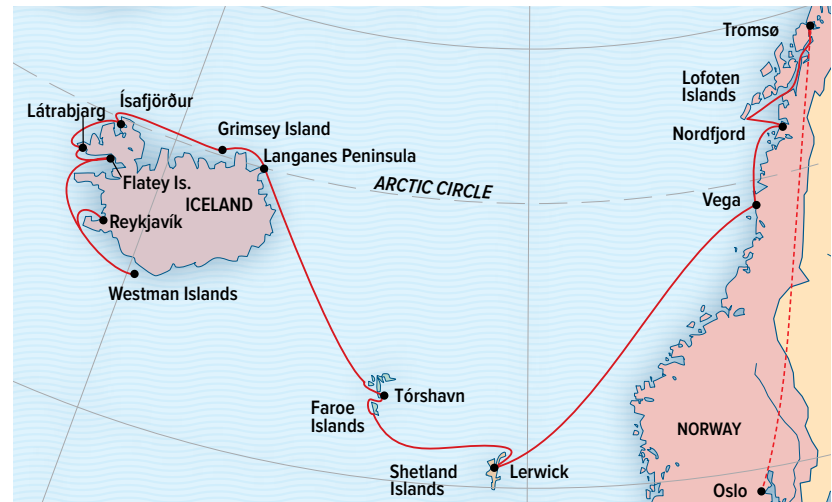
## COASTAL WONDERS OF NORWAY, THE FAROE ISLANDS, & ICELAND

**17 DAYS, 15 NIGHTS | DATE: 2020 JUN. 18**

PRICING FROM \$17,160 (See page 43 for details.)

Follow the Viking trail aboard the *National Geographic Endurance* on a voyage from Norway to the far-flung islands and archipelagos of the North Atlantic. Cruise the famed Norwegian fjord lands and the magical Lofoten Islands, explore Stone Age sites in Scotland's Shetland Islands, and come face-to-face with the legacy of the Vikings amid the turf-roofed cottages and ancient sites in the mysterious and stunningly beautiful Faroe Islands. Then trace Iceland's most remote shorelines, witnessing geological wonders from volcanoes to thundering waterfalls.

*Above: Cruise through Hardangerfjord, with granite mountain backdrop and glacial falls at the edge of Svartisen National Park.*



**JUN. 18 & 19:** U.S./Oslo, Norway

**JUN. 20:** Oslo/Tromsø/Embark

**JUN. 21:** Tysfjorden

**JUN. 22:** Lofoten Islands

**JUN. 23-24:** Exploring the Norwegian Fjords

**JUN. 25:** At Sea/Noss/Lerwick, Shetland Islands

**JUN. 26:** Lerwick/Foula

**JUN. 27-29:** Exploring the Faroe Islands archipelago

**JUN. 30:** Langanes Peninsula/Grimsey, Iceland

**JUL. 1:** Ísafjörður

**JUL. 2:** Flatey Island/Látrabjarg

**JUL. 3:** Islands Of Heimaey & Surtsey, Westman Islands

**JUL. 4:** Reykjavik/Disembark/U.S.

*“The first person to make it through the Northeast Passage...was Baron Nils Adolf Erik Nordenskiöld... He was reputedly more interested in opening up a trade route along the Siberian coast as an outlet for fur and other goods from the hinterland than the glory of setting a record. ‘The romantic and incredible and heroic do not lard the log of the Vega (his ship).’ Jeannette Mirsky wrote in her book TO THE ARCTIC! ‘There are no crises, no hairbreadth escapes.’ There was, however, ice.”*

—MARIANA GODSELL, *ICE*, THE UNIVERSITY OF CHICAGO PRESS, 2005



We’re not in it for trade. And we’d like our log to be devoid of crises and hairbreadth escapes, too. But we are in it for glory—the glorious exhilaration of discovery. And we’re certain to find thrilling opportunities along the ice edges—the whole way through. *National Geographic*

*Endurance* will roam free at the top of the world, navigating one of the most untrammelled, adventurous routes in the high Arctic. Explore remote shores—making for some of the most indelibly romantic names in Arctic adventure—as we seek out spectacular wildlife and witness seldom-seen wonders on an epic voyage.

#### FRANZ JOSEF LAND

The world’s northernmost archipelago, part of the largest Arctic marine reserve—a region of pack ice, towering volcanic mountains, icebergs and glaciers. And a sanctuary for emblematic species: Atlantic walrus, bowhead whale, polar bear, narwhal, and the rare ivory gull.

#### KARA SEA / NOVAYA ZEMLYA

Depending on our captain’s route, we may approach the heavily glaciated coast of the Novaya Zemlya archipelago, northernmost of the islands of the Kara Sea.

#### LAPTEV SEA / SEVERNAYA ZEMLYA

With 24-hour light, our spotters stand by ready to announce the sighting of beluga whales or other marine mammals that frequent the shallow coastal waters off Cape Chelyuskin, most northerly point of the Eurasian continent.

#### NEW SIBERIAN ISLANDS

Often surrounded by heavy pack ice, the 500-foot-high volcanic spires, cliffs and buttresses of these rocky outposts are a magnificent backdrop for abundant wildlife.

#### WRANGEL ISLAND

A nature reserve since 1974 and World Heritage site, Wrangel has the largest concentration of denning polar bears and Pacific walrus in the world, as well as musk oxen and reindeer. We hope to visit the village and research center on the south coast.

#### CHUKCHI SEA

Sailing south from Wrangel, we’ll call at Kolyuchin Island, where cormorants, murres, puffins auklets, and other Pacific seabirds nest on steep cliffs, then cross the International Date Line to Alaska as a finale.

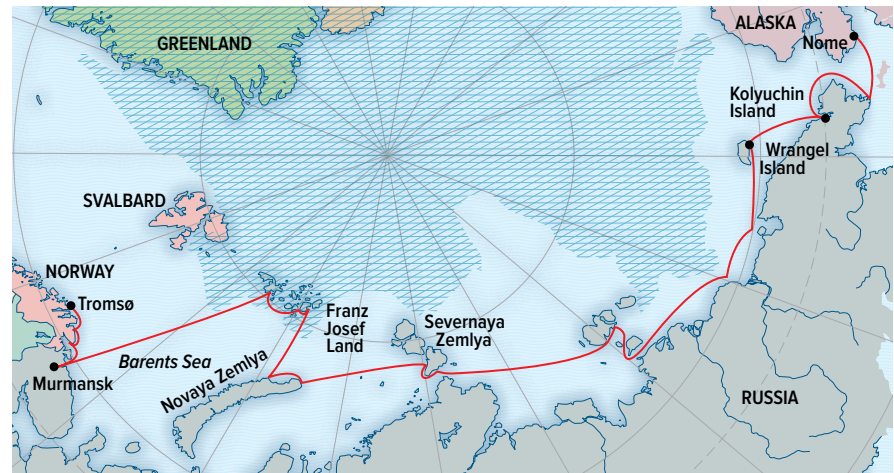


## NORTHEAST PASSAGE: AN UNFORGETTABLE VOYAGE FROM NORWAY TO ALASKA

**26 DAYS, 24 NIGHTS | DATES: 2021 JULY 21**  
PRICING FROM \$34,750 (See page 43 for details.)

Thrill at remote Siberian shores and far northern archipelagos—including Franz Josef Land, Severnaya Zemlya, the vast and barely explored New Siberian Islands and Wrangel Island—little changed since the days of Nordenskjöld, Amundsen and intrepid explorers of the last century. Be aboard as we partner with wind, wave and weather, slaloming the lines of longitude in search of the wildlife and wonders hidden within this little-known Passage.

*Above: Wrangel Island is one of the best places on the planet to see great concentrations of polar bears congregated. Right: Franz Josef Land offers a plethora of wild and marine life sightings such as groups of walrus. Far left: Bird cliffs on Kolyuchin Island, Russia.*



**JUL. 20 & 21:** U.S./Oslo, Norway

**JUL. 22:** Oslo/Tromsø/Embark

**JUL. 23 & 24:** Exploring Northern Norway

**JUL. 25-AUG. 13\*:** Exploring the Russian High Arctic, Siberian coast and Russian Far East

**AUG. 13\*:** Disembark/Nome, Alaska/  
Anchorage/U.S.

*\*Due to crossing the International Date Line, there will be two days that fall on Aug. 13.*



*Superlatives. Inconceivable scale. Imagination-defying scope. That's what lies ahead on this pioneering expedition. Greenland is the largest island in the world, and Cape Morris Jesup, its northernmost point, is a mere 460 miles from the North Pole. Within it lies the world's largest park, Northeast Greenland National Park. Created in 1974, Kalaallit Nunaanni nuna eqqissisimatitaaq (in Greenlandic,) is 100 times larger than Yellowstone National Park. The same size as France and Spain combined, it covers more territory than all but 29 entire countries on the planet.*



*Above: Humpback whale surfacing and blowing, Greenland Sea; musk oxen on a cliff, Greenland.*

The huge interior of the Northeast Greenland National Park is part of the Greenland Ice Sheet. Large ice-free tracts of its coast contain 40 percent of the world's population of musk oxen. Other land mammals in the Park include walrus, polar bear, reindeer, mountain hare, and arctic fox. And the bordering ocean contains an abundance of humpback, minke, beluga, and fin whales, plus ringed seal, bearded seal, harp seal and hooded seal. Many bird species breed in the Park, including common loon, barnacle goose, pink-footed goose, common eider, gyrfalcon, snowy owl, ptarmigan and raven, among others. The impressive variety of wildlife is backed by scenery so stunning, official descriptions consistently acclaim it an "Arctic paradise." And that's not all, there's Scoresbysund in the south east region. Every expedition ship yearns to forge through the epic ice barrier that has long prevented contact with the tiny human communities perched on this knife-edge, and to capture the splendid landscapes that lie beyond the ice wall. Now, 'awesome' is attainable: the strength and ice class of *National Geographic Endurance* will prove to be game-changing on her inaugural season contest with the ice.





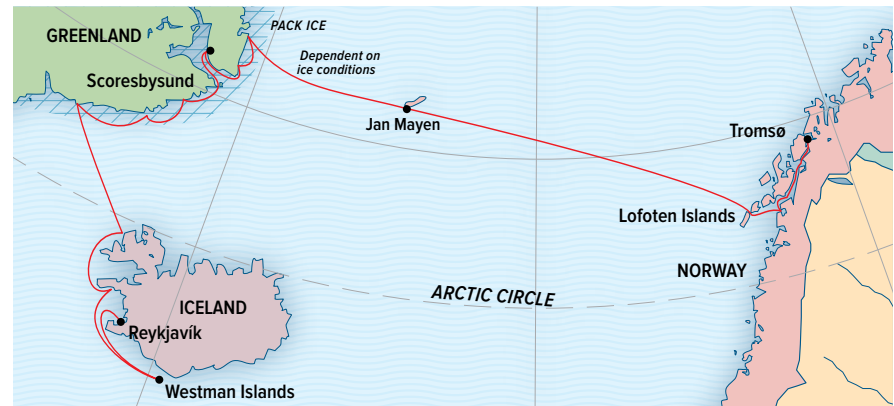
## ARCTIC EXPLORATION: A VOYAGE TO ICELAND, EAST GREENLAND, & NORWAY

**17 DAYS, 15 NIGHTS | DATE: 2020 JUL. 3**

PRICING FROM \$17,160 (See page 43 for details.)

This voyage of true exploration anchors in seldom-visited locales like research outpost Jan Mayen and along East Greenland on the way from Iceland, ensuring a thrilling blend of geological wonders, Arctic wildlife, and cultural encounters. Aboard *National Geographic Endurance*, we'll venture where few ever get to go—including Scoresbysund, the largest fjord system in the world where hardy Inuit communities thrive. If weather and water allow, the ship will search even farther for new, uncharted areas in this vast geography.

*Above: Guests Zodiac cruise near the base of a waterfall, Scoresbysund, Greenland. Right: Location sign, Jan Mayen.*



**JUL. 3 & 4:** U.S./Reykjavik, Iceland/Embark

**JUL. 5:** Islands of Heimaey & Surtsey, Westman Islands

**JUL. 6:** Látrabjarg/Flatey Island

**JUL. 7:** NW Iceland

**JUL. 8-12:** East Greenland

**JUL. 13 & 14:** Jan Mayen, Norway/At Sea

**JUL. 15:** Lofoten Islands

**JUL. 16:** Nordfjord/Svartisen

**JUL. 17:** Tysfjorden

**JUL. 18 & 19:** Tromsø/Disembark/Oslo/U.S.





## EAST GREENLAND: WILD SHORES OF THE HIGH ARCTIC

**20 DAYS, 18 NIGHTS | DATE: 2020 AUG. 31**

PRICING FROM \$23,870 (See page 43 for details.)

As fiercely guarded as any kingdom, Greenland's eastern coast is flanked by thousands of bergs calved from its massive ice sheet. It's where we'll enter the coastline of the largest national park in the world—Northeast Greenland National Park—to find polar bears, seals, walrus, Arctic terns and more. And also see, from your *National Geographic Endurance* vantage point, crevasse-laced glaciers; mountains made from some of the oldest rock on earth, stretching inland as far as the eye can see; and coastal villages where descendants of some of the greatest hunters our species has ever known dwell. Come thrill to *National Geographic Endurance's* ice power, and discover wonders of the Arctic.

**AUG. 31 & SEP. 1:** U.S./Oslo, Norway

**SEP. 2:** Oslo/Tromsø/Embark

**SEP. 3:** Tysfjorden

**SEP. 4:** Nordfjord/Svartisen

**SEP. 5:** Lofoten Islands

**SEP. 6-8:** At Sea/Jan Mayen, Norway/  
At Sea

**SEP. 9-13:** Exploring Northeast  
Greenland National Park

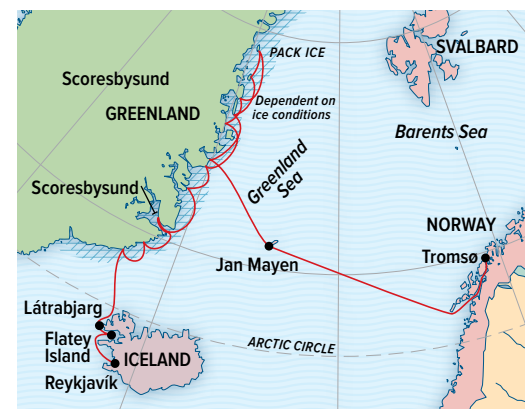
**SEP. 14 AND 15:** Scoresbysund,  
East Greenland

**SEP. 16:** East Greenland

**SEP. 17:** At Sea/Vigur, Iceland

**SEP. 18:** Flatey Island/Látrabjarg

**SEP. 19:** Reykjavík/Disembark/U.S.



*Main image: Guests will explore the massive blue ice of East Greenland up close. Above: Our staff will be on the lookout for spectacular opportunities to view and capture the northern lights at this time of year.*



## ICELAND'S WILD WEST COAST TO EAST GREENLAND

**13 DAYS, 11 NIGHTS | DATE: 2020 SEP. 18**

PRICING FROM \$12,520 (See page 43 for details.)

Discover the wild west coast of Iceland with its towering bird cliffs, meadows carpeted in wildflowers, quiet coves, and majestic waterfalls. Explore the largest national park in the world—Northeast Greenland National Park—and search for polar bears, musk oxen, whales and more. Sail into Scoresbysund, ice permitting, the world's largest and longest fjord system and home to remote Inuit communities. Learn how to capture Northern Lights displays, conditions permitting, with a National Geographic photographer by your side.

**SEP. 18 AND 19:** U.S./Reykjavík, Iceland/  
Embark

**SEP. 20:** Látrabjarg & Flatey Island

**SEP. 21:** Exploring the Westfjords

**SEP. 22:** Crossing the Denmark Strait

**SEP. 23-29:** Exploring Scoresbysund &  
Northeast Greenland

**SEP. 30:** Reykjavík, Iceland/Disembark/U.S.



*Above: Northern Lights, Greenland. Right: Guests exploring by Zodiac.*



From left (artist's renderings): Suite with balcony; standard cabin and standard bath.

## NATIONAL GEOGRAPHIC ENDURANCE

**CAPACITY:** 126 guests in 69 outside cabins.

**REGISTRY:** Bahamas. **OVERALL LENGTH:** 406 feet.

*National Geographic Endurance* is a next-generation expedition ship, purpose-built for polar navigation. A fully stabilized, highly strengthened, ice-class Polar Code PC5 (Category A) vessel, it is designed to navigate polar passages year-round, and safely explore uncharted waters, while providing exceptional comfort. Its patented X-Bow® is key to its design; its powerful wave-slicing action provides an extremely smooth ride in even adverse conditions, and even reduces spray on deck, for superior observation. She carries a full suite of expedition tools (below), and offers a variety of experience enhancing amenities.

**PUBLIC AREAS:** Two restaurants, a Chef's Table for small group dining, Observation Lounge with bar, yoga studio, gym, Wellness area, infinity-style outdoor hot tubs, library with fireplace, main lounge with full service bar, 24-hour beverage station, state-of-the-art facilities for films, slideshows and presentations, and a photo workshop area; plus, an expedition base with lockers for expedition gear, and an "open bridge" for access to our captain, officers and the art of navigation.

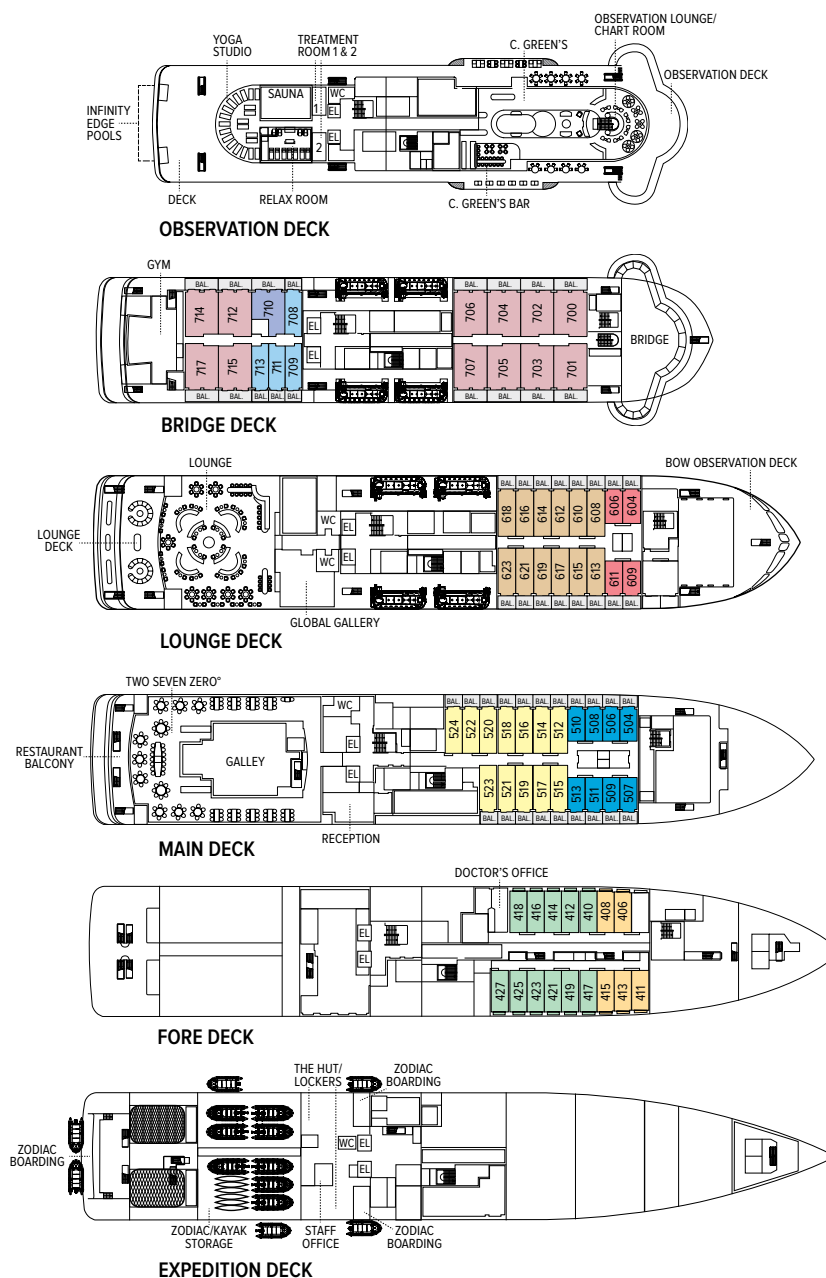
**MEALS:** Two restaurants, featuring local, sustainable choices and unassigned seating for flexible, inclusive dining; plus a Chef's Table for intimate, small group dining. Main restaurant has 270° views, and C. Green's restaurant features lighter, grilled and healthy choices.

**CABINS:** All cabins face outside with large windows, private facilities and climate controls. 53 cabins have balconies. Cabins are equipped with expedition command centers with tablets and USB/mobile device docking, TVs, Wi-Fi connections, and hair dryers.

**EXPEDITION TOOLS:** Zodiac landing craft, kayaks, snowshoes, cross-country skis, undersea specialist operating a Remotely Operated Vehicle (ROV) and underwater video camera for unique access to polar marine world, hydrophone, aerial remote-controlled camera and video microscope.

**SPECIAL FEATURES:** A full-time doctor, undersea specialist, National Geographic photographer, Lindblad-National Geographic certified photo instructor and video chronicler, and laundry.

**WELLNESS:** The vessel is staffed by our wellness specialists and features a glass-enclosed yoga studio, gym, treatment rooms and spa relax area, and high- and low-heat saunas with ocean views.



**CATEGORY 1:** Fore Deck—Standard cabin with two large windows, alcove seating, relax chair 183 square ft. #406, 408, 411, 413, 415

**CATEGORY 2:** Fore Deck—Standard cabin with two large windows, Alcove seating, Relax chair 205 square ft. #410, 412, 414, 416-419, 421-427

**CATEGORY 3:** Main Deck—Standard Balcony cabin with balcony and sofa 205 square ft. #512-524

**CATEGORY 4:** Lounge Deck—Standard Balcony cabin with balcony and sofa 205 square ft. #608, 610, 612, 613-623

**CATEGORY 5:** Bridge Deck—Standard Balcony cabin with balcony and sofa 205 square ft. #708, 709, 711, 713

**CATEGORY 6:** Bridge Deck—Junior Balcony Suite with large balcony, sofa bed 344 square ft. #710

**CATEGORY 7:** Bridge Deck—Large Balcony Suite with large balcony, sofa bed, bathtub, walk-in closet 430 square ft. #700-707, 712, 714-717

**CATEGORY A SOLO:** Main Deck—Standard Balcony cabin with balcony and sofa 140 square ft. #504-510, 513

**CATEGORY B SOLO:** Lounge Deck—Standard Balcony cabin with balcony and sofa 140 square ft. #604, 606, 609, 611

**All cabins have:** Ability to set up as Queen or two Twins, Command Center with docking for multiple devices, atlas, clock, barometer, TV, phone, digital tablet for onboard info, hair dryer, safe, refrigerator.

### WITH COMPLIMENTS, YOUR BAR TAB & ALL CREW GRATUITIES ARE INCLUDED.

Prices are per person, double occupancy unless indicated as solo.

ITINERARY	YEAR	CAT. 1	CAT. 2	CAT. 3	CAT. 4	CAT. 5	CAT. 6	CAT. 7	CAT. A SOLO	CAT. B SOLO	ADVANCE PAYMENT	NOTE
Epic Antarctica Voyage – Page 22	2020/2021	\$48,800	\$50,240	\$58,500	\$65,540	\$75,360	\$86,660	\$96,190	\$73,130	\$81,930	\$3,000	Includes two hotel nights. Immigration fees are not included. Sample Airfares: Miami/Buenos Aires, Auckland/Los Angeles (or vice versa) Economy from \$1,600, Business from \$7,300. Charter airfare from \$1,000 (Buenos Aires/Ushuaia, Dunedin, N.Z./Auckland, or vice versa).
Journey to Antarctica – Page 24	2020	\$16,290	\$16,790	\$19,560	\$21,900	\$25,190	\$28,970	\$32,150	\$24,450	\$27,380	\$2,500	Includes one hotel night. Immigration fees are not included. Sample Airfares: Round-trip Miami/Buenos Aires: Economy from \$1,100; Business from \$3,100. Charter airfare from \$1,100 (round-trip Buenos Aires/Ushuaia).
Journey to Antarctica Holiday – Page 24	2020	\$17,910	\$18,450	\$21,490	\$24,070	\$27,680	\$31,830	\$35,330	\$26,860	\$30,090		
Antarctica, South Georgia & The Falklands – Page 25	2020	\$28,580	\$29,440	\$34,300	\$38,410	\$44,170	\$50,790	\$56,380	\$42,880	\$48,000	\$3,000	Includes one hotel night. Immigration fees are not included. Sample Airfares: Round-trip Miami/Santiago, Buenos Aires/ Miami (or vice versa). Economy from \$1,300, Business from \$2,500. Charter airfare from \$1,260 (round-trip Santiago/ Falklands, Ushuaia/Buenos Aires, or vice versa).
Svalbard in Spring: Polar Bears, Arctic Light & Epic Ice – Page 28	2020	\$11,600	\$11,970	\$14,600	\$16,200	\$17,990	\$20,700	\$22,990	\$18,250	\$20,250	\$1,500	Includes two hotel nights. Sample Airfares: Round-trip New York/Oslo. Economy from: \$930; Business from \$3,500. Charter airfare from \$890 (round-trip Oslo/Longyearbyen).
Norway's Fjords & Arctic Svalbard – Page 30	2020	\$19,420	\$19,990	\$24,440	\$27,130	\$30,110	\$34,630	\$38,440	\$30,550	\$33,910	\$2,500	Includes one hotel night. Sample Airfares: New York/Bergen and Oslo/New York (or vice versa): Economy from: \$900; Business from \$2,300. Charter airfare from \$490 (Longyearbyen/Oslo).
Norwegian Discovery: Svalbard & the Northern Fjords – Page 31	2020	\$10,290	\$10,590	\$12,920	\$14,340	\$15,920	\$18,310	\$20,320	\$16,150	\$17,930	\$1,500	Includes two hotel nights. Sample Airfares: Round-trip New York/Oslo. Economy from: \$970; Business from \$2,000. Charter airfare from \$850 (Oslo/Longyearbyen and Tromsø/Oslo).
Norwegian Fjords & Scottish Isles – Page 32	2020	\$7,970	\$8,200	\$9,990	\$10,990	\$12,200	\$13,990	\$15,530	\$12,490	\$13,740	\$1,500	Sample Airfares: New York/Bergen and Edinburgh/New York (or vice versa): Economy from: \$1,150; Business from \$4,500.
Coastal Wonders of Norway, the Faroe Islands, & Iceland – Page 34	2020	\$17,160	\$17,670	\$21,560	\$23,930	\$26,560	\$30,540	\$33,900	\$26,950	\$29,910	\$2,500	Includes one hotel night. Sample Airfares: New York/Oslo and Reykjavik/New York: Economy from: \$600; Business from \$3,200. Charter airfare from \$490 (Oslo/Tromsø).
Northeast Passage: An Unforgettable Voyage from Norway to Alaska – Page 36	2021*	\$34,750	\$35,780	\$43,660	\$48,460	\$53,780	\$61,850	\$68,780	\$54,580	\$60,580	\$3,000	Includes one hotel night. Sample Airfares: Seattle/Oslo and Anchorage/Seattle (or vice versa): Economy from: \$1,190; Business from \$4,800. Charter airfare from \$490 (Oslo/Tromsø) and from \$350 (Nome/Anchorage) or vice versa.
Arctic Exploration: A Voyage to Iceland, East Greenland, & Norway – Page 38	2020	\$17,160	\$17,670	\$21,560	\$23,930	\$26,560	\$30,540	\$33,900	\$26,950	\$29,910	\$2,500	Includes one hotel night. Sample Airfares: New York/Reykjavik and, Oslo/Newark: Economy from: \$600; Business from \$3,200. Charter airfare from \$490 (Oslo/Tromsø).
East Greenland: Wild Shores of the High Arctic-Page 40	2020	\$23,870	\$24,590	\$29,990	\$33,290	\$36,950	\$42,490	\$47,160	\$37,490	\$41,610	\$3,000	Includes one hotel night. Sample Airfares: New York/Oslo, and Reykjavik/New York: Economy from: \$700; Business from \$1,800. Charter airfare from \$490 (Oslo/Tromsø).
Iceland's Wild West Coast to East Greenland – Page 41	2020	\$12,520	\$12,880	\$15,690	\$17,270	\$19,170	\$21,980	\$24,400	\$19,610	\$21,590	\$3,000	Includes one hotel night. Sample Airfares: New York/Oslo, and Reykjavik/New York: Economy from: \$700; Business from \$1,800. Charter airfare from \$490 (Oslo/Tromsø).

Prices quoted in this brochure are valid as of the time of printing, are subject to modification, and are not guaranteed until booking and required deposit is made. See our website at [www.expeditions.com](http://www.expeditions.com) for the most up-to-date pricing.

\*Rates apply if booked before Sep. 30, 2019



*Rock Arch, Jan Mayen.*



# NEW! ARCTIC PARKA INAUGURAL EDITION

In honor of the *National Geographic Endurance* Inaugural we will offer our first-ever Arctic parka. Based on our coveted Antarctica parka, a combination of vintage design and contemporary hi-tech manufacture for maximum polar functionality, our 2020 Arctic parka will be blue, incorporate design updates, and feature a Limited Edition Inaugural embroidered patch on the sleeve.

*Based on the design of our orange Antarctica parka, with its separate café jacket for as-desired layering, our new blue Arctic parka offers warmth and the convenience of onboard delivery. The 2020 design features a Limited Edition patch commemorating the National Geographic Endurance launch.*

## RESERVATION INFORMATION:

**Terms & Conditions:** For complete terms and conditions please visit [www.expeditions.com/terms](http://www.expeditions.com/terms)

**Costs Include:** All accommodations aboard ship or in hotels per itinerary or similar, all meals and beverages aboard ship (excepting certain super-premium brands of alcohol), meals on land as indicated accompanied by non-alcoholic beverages, air transportation where indicated as included, shore excursions, sightseeing and entrance fees, special access permits, transfers to and from group flights, use of kayaks, tips (including gratuities to ship's crew), taxes and service charges, services of a ship physician and services of our expedition staff. Unused services or items included in our programs are non-refundable.

**Not Included:** Air transportation (except where shown as included), extensions, passport, visa, immigration fees, meals not indicated, travel protection plan, items of a personal nature, such as e-mail, voyage DVD, laundry and certain super-premium brands of alcohol.

**Airfare:** For all programs, airfare is an additional cost unless otherwise indicated. Sample airfares are subject to change. We will gladly assist in making your air arrangements for a \$50 per person service fee.

**Reservations:** To reserve your place, an advance payment is required at the time of reservation. See page 43 for individual itinerary details.

**Final Payment:** For expeditions aboard *Endurance*, payment is due 120 days prior to departure. Payment schedules may vary for Holiday departures and certain longer voyages, due to high demand for these voyages. We reserve the right to cancel your reservation if payment has not been received by final payment due date.

**Travel Protection Plan:** We recommend that you take advantage of our Travel Protection Plan. This plan offers comprehensive coverage to protect you from cancellation fees, costs incurred due to trip delays/interruption, damaged or lost luggage, medical assistance, and evacuation during your travels. Our Travel Protection Plan is available for U.S. and Canadian residents only, and may be purchased any time prior to final payment due date. If you are not satisfied for any reason, you may return your plan within 10 days after purchase. Your premium will be refunded if canceled within 10 days, provided you have not already departed on the trip or filed a claim. When so returned, the coverage under the plan is void from the original date of purchase.

**Responsibility and Other Terms & Conditions:** Certain provisions concerning, among other things, limitations of Lindblad Expeditions' and the National Geographic Society's liability for loss of property, injury, illness or death during the voyage will be provided to all guests on the ship's ticket sent prior

to departure, and are also available on our website at [www.expeditions.com/terms](http://www.expeditions.com/terms), or upon request. By registering for a trip, the guest agrees to all such terms and conditions.

**Note:** Itineraries and prices listed in this brochure are valid as of publication date, and are subject to change. Under normal conditions, the total expedition cost is guaranteed at the time of booking. However, the published price is determined far in advance of initial departure on the basis of then-existing projections of fuel and other costs. In the event we determine that current costs create an unsustainable financial model, including but not limited to increases in the price of fuel, currency fluctuations, increases in government taxes or levies, or increased security costs, we reserve the right to pass on these costs to you, to cover such unexpected increases. We will always provide a transparent accounting of the reason for such an increase in costs.

**Cancellation Policy:** Cancellation penalties may apply after payment is received. Please visit [www.expeditions.com/terms](http://www.expeditions.com/terms) for complete cancellation policies.

©2019 Lindblad Expeditions

Lindblad Expeditions and the Eye are the trademarks of Lindblad Expeditions. All rights reserved.

NATIONAL GEOGRAPHIC and the Yellow Border are the trademarks of the National Geographic Society. All rights reserved.

Photo Credits: Alamy Stock Photo, Eric Guth, Sergey Gorshkov / NPL / Minden Pictures, Ralph Lee Hopkins, Albert Knapp, Sven-Olof Lindblad, Naturfokus/Ole J. Liodden, Michael S. Nolan, Michael Schmeling, Ragnar Th. Sigurdsson, Shutterstock, Keren Su, Susan Seubert, Jack Stephens, Utterstrom Photography, Barbara Vasquez, Paul Williams.

**For Reservations: Contact your travel advisor or Lindblad Expeditions**

**1.800.EXPEDITION (1.800.397.3348)**

**Reservation Hours: Monday – Friday 9am – 9pm ET**

**Saturday & Sunday 10am – 5pm ET**

**Lindblad Expeditions, Inc., 96 Morton Street, New York, NY 10014**

**Phone: 212.261.9000 • Fax: 212.265.3770**

**For additional information and online reservations, visit us on the Web:  
[www.expeditions.com](http://www.expeditions.com)**



96 MORTON STREET, NEW YORK, NY 10014

PRSR STD  
U.S. POSTAGE  
PAID  
LINDBLAD  
EXPEDITIONS

Account Number:



**1.800.EXPEDITION | WWW.EXPEDITIONS.COM**

♻️ Printed on 10% recycled content paper with soy-based inks. We recommend that you pass this along for others to enjoy or recycle.

EDC-069

