

GALÁPAGOS

REMARKABLE
EXPEDITIONS
+ EXPLORE
MORE OPTIONS

EXPERT AT MAKING
THE MOST OF YOUR
EVERY MINUTE

100% CARBON
NEUTRAL & MORE
REASONS TO FEEL
GOOD ABOUT
CHOOSING US

PLUS
FREE AIR

Isabela Island, GALÁPAGOS

0.12° S, 91.51° W

A MULTI-TON WHALE CALMLY SURFACING RIGHT IN FRONT OF YOUR ZODIAC & LENS

You know the charge you get when you come upon something wild and unexpected, something rare and beautiful? We live for those moments. We sail to the ends of the Earth to find them, to discover them anew, and conjure them for our guests.

THAT'S THE EXHILARATION OF DISCOVERY



- 2** Sustainability
- 4** Your Ships
- 6** Active & Engaging
- 8** See 100%: On Land and Sea
- 10** A Day In The Life
- 12** Dedicated Team
- 14** Interesting Individuals
- 16** Local Flavors
- 18** Where Families Connect
- 20** National Geographic Photography
- 22** Exploring Galápagos & Peru
- 24** Galápagos 10-Day
- 26** Galápagos + Machu Picchu & Peru's Land of the Inca
- 28** Wild Escape Options
- 30** Wild Galápagos Escape
- 32** Wild Galápagos & Peru Escape
- 34** Beyond Galápagos
- 36** *National Geographic Endeavour II*
- 38** *National Geographic Islander*
- 40** Offers and Terms



DEEPENING OUR COMMITMENT
IN GALÁPAGOS SINCE 1967





YOU'RE CONSIDERING A TRIP TO GALÁPAGOS—HOW EXCITING!

As you continue your research, you'll find much that differentiates us from the other companies operating in Galápagos. And discover reasons to feel good about traveling with us. Together with our guests, we've contributed more than \$9 million to important conservation, education, and research projects in the islands. Since the Lindblad Expeditions-National Geographic Fund carries the administration costs, 100% of guest donations stay in the region. And you can experience the results of our work! You might have dinner with a young Galápagos researcher traveling to a field project. Or you might opt to visit Tomás de Berlanga, an open-air school on Santa Cruz that immerses the 'future stewards' of Galápagos in nature. When you walk through town as a Lindblad Expeditions guest, those genuine smiles are for you, and all that guests like you have helped us do. And on a more global level, as of 2019, we're 100% carbon neutral, offsetting emissions from all our ships, offices and employee travel. And we've eliminated single-use plastic fleetwide.

Quick look at some accomplishments

- In 1967, Lars-Eric Lindblad, father of CEO Sven Lindblad, was instrumental in the creation of the Galápagos National Park Service and paid the salaries of the first two park rangers
- Since then, we've provided key funding, via our local partners-in-conservation, for the ecological restoration of Santiago, Isabela, Rábida, Pinzon, North Seymour, Floreana and other island ecosystems
- Supported vital efforts to protect the Galápagos Marine Reserve
- Our pioneering farm-to-table program has provisioned almost 70 tons of organic, local produce since October 2017
- We also provision sustainably harvested fish from local fishermen
- Maintained a firm, ongoing commitment to sustainability in every region we explore
- Launched Galápagos Island Relief Fund in 2020 with Island Conservation

▶ Learn more at expeditions.com/galalegacy

OUR SHIPS: THE KEY TO YOUR GREAT EXPERIENCE

THE EXPEDITIONS WE OFFER, ABOARD THE 48-GUEST *NATIONAL Geographic Islander*, and the 96-guest *National Geographic Endeavour II*, are for those who want a 100% engaged, exploratory Galápagos experience. Our two ships are base camps, with two different personalities, and the same ability to thrill. Well equipped for adventures off ship, both are equally well equipped for living well. Supremely gracious with all the comforts and amenities, our ships feel like home immediately. Gathering places like the open decks, lounge and dining room contribute to the *esprit de corps* that is a hallmark of our expeditions. Fully stocked libraries serve those who want to learn more or want to settle in with a best-seller. Our wellness centers, fitness rooms, and on-deck stretching sessions add the mind-body connection to Galápagos' "tonic of wildness." And cosseting cabins, outfitted with our signature linens and feather duvets, provide the perfect ending to active days.

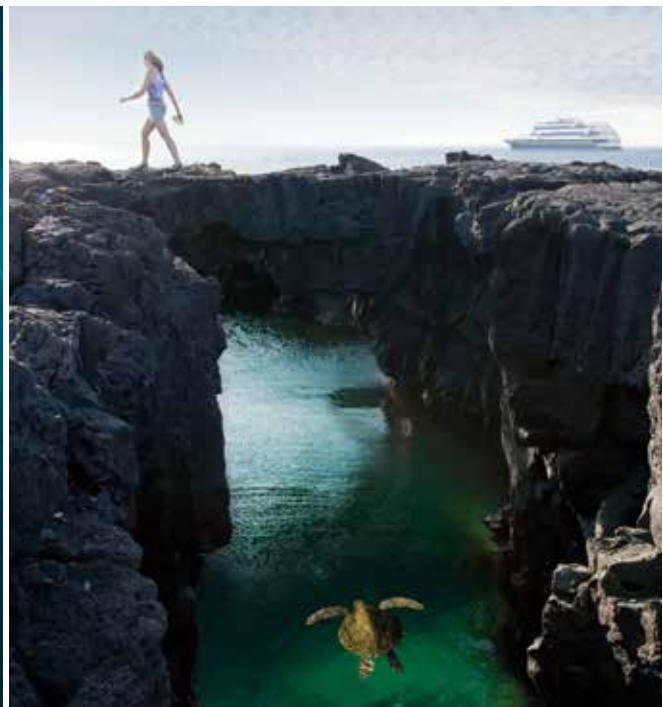
The inviting onboard feeling comes from our expedition team's passion for the place, the warmth and hospitality of our hotel team, and the willingness of our captains and officers to share the Bridge with you. And it also has a lot to do with how swiftly a community forms around the idea of being in this together—of not just passively experiencing Galápagos, but actively creating our own exhilarating adventures daily, with and for each other.

Cool Tools For Exploring

Both of our ships are equipped with a fleet of Zodiacs, kayaks and stand-up paddle boards to enable you to explore. Both ships also carry full snorkel gear, including shorty wetsuits, for all ages and sizes. There are plankton nets and a video microscope. And undersea specialists bring back videos of the day's snorkeling to present to everyone.







ACTIVELY MAKING THE MOST OF IT— THAT'S HOW WE DO GALÁPAGOS

WE ARE ACUTELY AWARE THAT VISITING THE GALÁPAGOS IS

a dream come true and the day will come when you'll have to tear yourself away. So, our entire operation is geared to making the most of every minute you get to spend here. Our days are highly active, there's no standing around idly, waiting. Each day you'll choose what you want to do—and head off! Hike, paddleboard, kayak. Snorkel, hang out with your photo instructor. Whether you want to work up a sweat on a long hike, take a long swim or just meander on a walk with a naturalist, you can choose your activities and your activity level. Snorkel every time it's offered or relax and breathe it all in—it's your adventure. Our generous staff-to-guest ratio means you can always find a naturalist whose interests and approach you share. You're free to explore the ship, hit the gym, or find your nook and cranny. And always welcome to come up to the Bridge and shoot the breeze with the captain and officers.

“We have learned that pace, emphasis, and a diversity of opportunity matters a great deal to people. Some want to move more slowly on land, some with greater pace. Some want to focus on photography, some want to spend as much time as possible snorkeling. Others want to kayak or use our paddleboards. And some want to do it all. What will appear seamless to most is actually quite complicated, requiring a robust staff to support the activity, including naturalists, Lindblad Expeditions-National Geographic photo instructors, an expedition leader, someone who films the undersea and presents what's down there, and a video chronicler to document the time.”

— SVEN LINDBLAD
CEO & Founder





GALÁPAGOS IS A LAND & SEA EXPERIENCE
SEE, LEARN & DO MORE





GALÁPAGOS IS ONE OF THE WORLD'S LARGEST BIOSPHERE reserves, covering hundreds of square miles of ocean. The Galápagos undersea is vibrant, as full of interesting creatures as the land. It's half the experience, vital to your understanding. So, we devote time and attention to enabling you to explore the fascinating world beneath our ships. During your voyage you will have many opportunities to snorkel, sometimes twice a day. You'll see acrobatic sea lions, Pacific green sea turtles, and passing penguins. You might swim amid white-tipped reef sharks, a cloud of colorful fish or see a blue-footed booby plunge in to spear dinner. And because we have complete snorkeling gear aboard, exclusively yours for the duration, there's no need to pack or tote. And in addition to, or instead of, experiencing the amazing undersea yourself, you'll have the option to view video footage, presented by our naturalists on the Lounge's TV screens to guide you into the deep and enrich your understanding.

We enable Scuba divers to experience Galápagos' diverse marine life, by arrangement with a local dive operation. Available to intermediate and advanced divers with recent experience, diving is available on select *National Geographic Endeavour II* departures, at an additional cost. Speak with an Expedition Specialist for dates and details.





A DAY IN THE LIFE OF OUR EXP

No two days are alike on our Galápagos expeditions. Some days we snorkel two times in one day, or change course to observe a passing whale or giant sunfish. This is a look at the shape a given day might take.

6:00 AM | WHALE WATCH & WELLNESS

Early-risers join naturalists for sunrise coffee, fruit and fresh-baked pastries, served on the Bridge Deck forward, where we keep watch for whales and wildlife against a backdrop of one of the world's most active volcanoes. Yoga class (and a green smoothie) with Juliana at 0700 on the Observation Deck.

8:00 AM | AWAY WE GO!

After breakfast guests disembark in smoothly orchestrated waves: with some opting for a long lava walk, shorter wildlife stroll along the coast, or a Zodiac cruise.

11:00 AM | PHOTO FUN

Join Lindblad-National Geographic certified photo instructor (and author of *Galápagos: Life in Motion*) Walter Perez for an engaging session photographing animal behavior.

12:30 PM | LUNCHING LOCAL

Lunch today is a typical Ecuadorian buffet, exclusively sourced from Galápagos. Meet our chefs, who will be carving a roast pig from Floreana, and introducing other local specialties.

1:30 PM | GET TOGETHER, TAKE A TIME OUT

Kids participating in the National Geographic Global Explorers program can get together with Paula to Fashion-A-Fish—creating and naming a new aquatic species with adaptations you invent. The teen group meets José in the Library to finish their trailer for the 'Darwin comes to Galápagos' movie. And all ages learn about tomorrow's Zodiac driving lessons at the Reception Hub.

EDITION

2:30 PM | SNORKELING OR GLASS-BOTTOM BOAT

Zodiacs depart for snorkeling along the coast of Isabela Island—a great place to encounter green turtles, marine iguanas and more in these rich waters. Keep a close lookout for Galápagos penguins, flying through the waters after schools of fish.

4:00 PM | ZODIAC SAFARI

Prepare for an exhilarating Zodiac cruise along the coast—a showcase for volcanic features, nesting penguins and flightless cormorants and nocturnal Galápagos fur seals hauled out to rest. Help your naturalists search for the endangered Galápagos martin to report its presence and behavior to scientists at the Charles Darwin Foundation.

**5:45 PM | EXACTLY ON THE EQUATOR:
VOLCAN ECUADOR**

Join us on the Observation Deck for wine tasting and some fun as we navigate north crossing the Equator at sunset. King Neptune may make an appearance— and bragging rights swag will be given out!

6:45 PM | READY FOR RECAP

Everyone meets in the Lounge for tonight's Recap and a preview of tomorrow. Naturalist Jonathan and National Geographic Global Explorer volunteers Elissa and David have a live demonstration planned of their haul from this afternoon's plankton tow. Don't be late!

9:00 PM | SEEING STARS

Night sky stargazing, if conditions allow. The Southern Cross is at its highest point in the sky after dinner tonight. Bring your binoculars for this show-and-tell with Carlos.



FROM THE CAPTAIN ON THE BRIDGE TO YOUR CABIN STEWARD, IT'S ONE TEAM WITH ONE MISSION

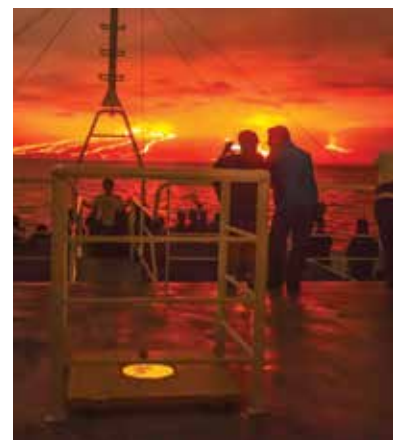
MAKING GALÁPAGOS EXCEPTIONALLY REWARDING FOR YOU

is our goal, and our team is integral and united. Our naturalists have the knowledge and passion for Galápagos that will kindle yours. They will do whatever it takes, from maintaining a constant lookout so you don't miss a passing whale; to offering an extra snorkel when sea turtles are nearby; or pausing on a walk, as has happened, to witness the birth of a sea lion pup. They'll help you see, do, and absorb all the extraordinary experiences. Our hotel team will know what you like and how you like it from Day One. Regardless of how often you're in your cabin, it will be immaculate when you return. If you're traveling with children or grandchildren, their special way with kids will warm your heart. And the captain and officers welcome you to the Bridge anytime—to scan for wildlife or simply enjoy the calm skill of navigation.

Since our team is made up mostly of Galapagueños and from all four inhabited islands, you'll enjoy an authentic connection to the people and the culture of the region. Discover what it was like to have been a child in these islands, or to have Galápagos as your cultural heritage.

“It's absolutely amazing to me what the staff is willing and able to do to make each day extraordinary. We didn't just change course to witness Sierra Negro volcano erupting, that was amazing enough. We had a “LAVA BBQ” on deck, so everyone could enjoy the spectacle and have an incredible dinner too. Then the captain arranged with the naturalists and hotel staff to stay in the area, so that we could see and photograph the spectacle again at dawn. It was so exciting on every level. Impressive!”

— JAKE W
Guest



DEDICATED TEAM



ALWAYS SOMEONE INTERESTING TO MEET

OUR CONNECTION TO GALÁPAGOS THROUGH

conservation and personal relationships has deep roots. For many guests that's a compelling reason to choose to experience Galápagos with us. But there's more: things are often extra interesting aboard our ships. We've recently signed an agreement with the National Park, formalizing Lindblad-National Geographic ships as platforms of opportunity for science in Galápagos, facilitating research and advancing the training of young local scientists. We've been doing this informally for decades—helping researchers and scientists from the Charles Darwin Research Station, Galápagos National Park wardens, National Geographic Explorers and other fascinating individuals with 'rides' to field sites. We've transported delicate eggs for the Mangrove Finch Project; hosted scientists working on Marine Invasive Species; fleetwide. and through a National Park program called Explora Galápagos, local teachers and other community members who have never visited their home islands are invited aboard to explore them with us. Then, there are those individuals (listed at right) who come aboard to share their knowledge and perspectives, as well as the adventure, with our guests. This is a real boon for guests—the prospect of not only exploring Galápagos but also of meeting genuinely interesting people engaged in interesting activities aboard our ships!

DIEGO BERMEO

Galápagos Young Photographers Photographer and environmental communicator, Diego founded the Young Photographers of Galápagos project, using photography as a tool for conservation and to enrich cultural identity with youth in protected areas. He has recently received a Scalesia Foundation grant, with support from the Lindblad Expeditions-National Geographic Fund, and will bring his best students aboard.

GROSVENOR TEACHER FELLOWS

Joining **select 2022** expeditions will be Grosvenor Teacher Fellows. These exemplary educators come from a wide range of backgrounds and geographies to gain field experience on a life-changing expedition. At home and on board they work to further students' understanding of the planet and empower them to generate solutions for a healthier and more sustainable future.

INTERESTING INDIVIDUALS



A large, rustic wooden mortar and pestle are the central focus, filled with dark coffee beans. To the right, a wooden tray is filled with vibrant red coffee cherries. The scene is set on a dirt floor, with several palm fronds leaning against the mortar. The overall atmosphere is one of traditional craftsmanship and natural ingredients.

GALÁPAGOS IS A COMPLETE
MIND & BODY EXPERIENCE



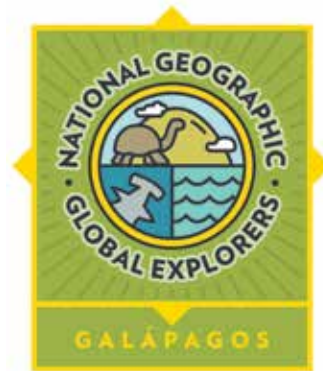
EACH DAY YOU'LL WAKE TO A FRESH ISLAND

vista, and head to the dining room to be greeted by a beautifully arrayed savory, nutritious breakfast buffet, featuring 100% Galápagos coffee (grown and roasted), fresh local juices, smoothies, Andean super-grains, plus every other classic breakfast staple, including bespoke omelets. Lunch buffets feature salads, meats, sustainable seafood, vegetables, wonderful desserts and fresh fruit. Daily dinner choices include fresh produce, sustainably sourced lobster in season, chicken, beef; and wines from the top Chilean

and Argentinean providers. All the food served aboard, plus barbecues on deck and our traditional Ecuadorian feast is locally inflected—highlighting local flavors and giving you another window on the nature and culture of the region. Equally important, our farm-to-table approach to food is focused on supporting and protecting the islands and its people. We're accomplishing good things—improving the local economy and reducing the risk of accidentally importing invasive species. But most importantly, our chef prepares fresh, delicious fare for you daily!

THE MOST EXHILARATING DISCOVERIES ARE THE ONES YOU MAKE TOGETHER

WHETHER IT'S KAYAKING ALONG A SHORE STUDDED WITH flightless cormorants, or observing blue-footed boobies performing a courtship dance, we believe shared activities in a wild and exciting environment can bring a family together. Kids and teens thrive in the safe, comfortable space of the ship where they can exercise a measure of autonomy. Teens are so engaged by the program's activities, they even drop their devices. Our naturalists and National Geographic certified field educators are excellent role models who ably embed learning into every activity. And since we believe in the value of sharing Galápagos with your kids and grandkids for fun and learning, we invite you to take \$500 off the double occupancy rate for each child under 18.



National Geographic Global Explorers Program

Our exclusive program for kids and teens is the only one of its kind in Galápagos travel. Developed in conjunction with National Geographic Education, it's designed to help kids and teens under 18 develop the attitudes, skills, and knowledge of an explorer. Families discover a unique way to explore and connect with each other and the natural world. And kids engage in a variety of cool optional activities from earning a Zodiac "driver's license" to recording wildlife sightings in their Field Notebook—all guided by a National Geographic certified field educator.

▶ Visit expeditions.com/family for program details.





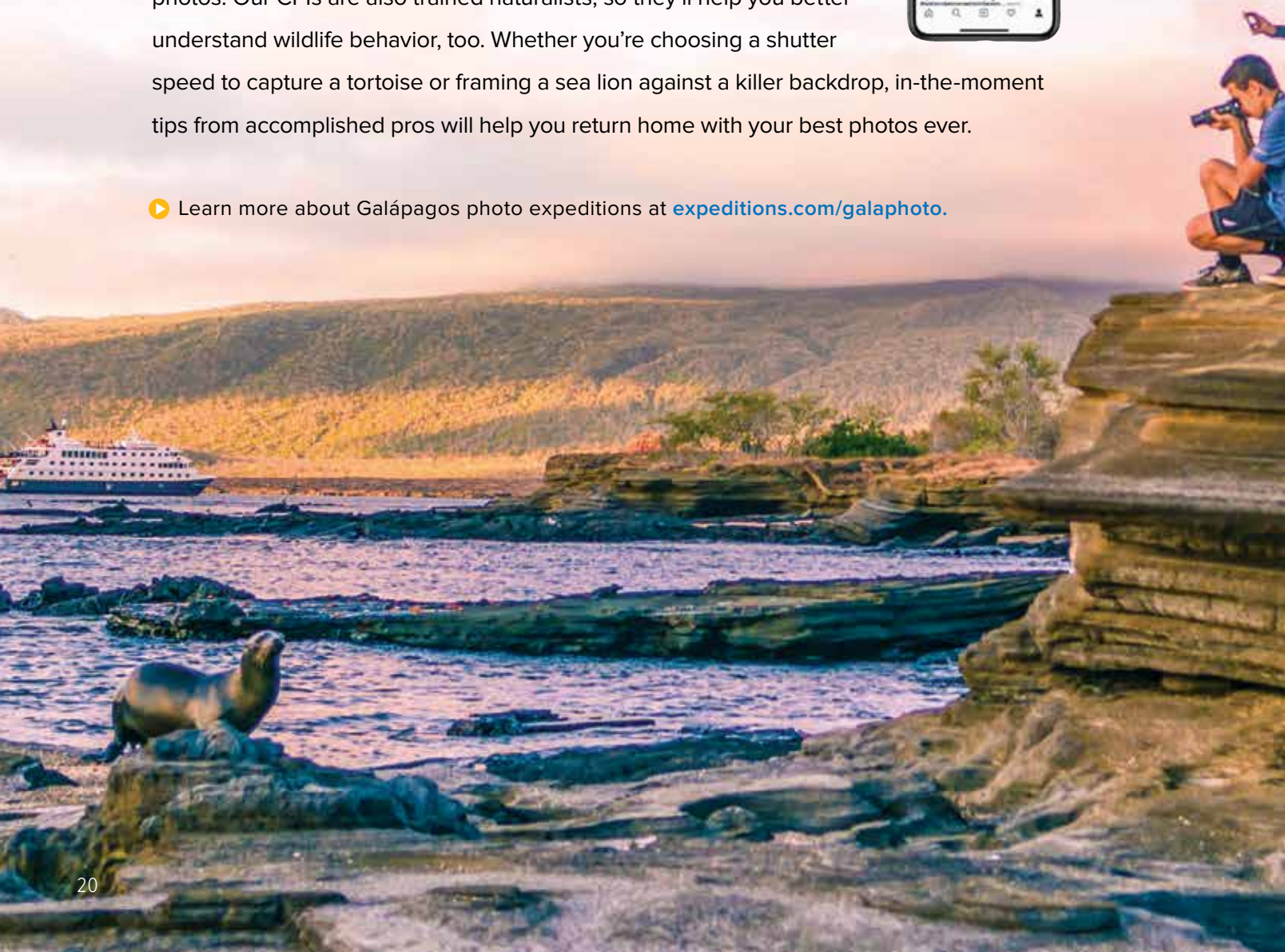
WHAT WILL YOU CREATE WITH LINDBLAD-NATIONAL GEOGRAPHIC CERTIFIED PHOTO INSTRUCTORS TO GUIDE YOU?

WHILE YOU'RE DISCOVERING GALÁPAGOS, YOU'LL HAVE THE BENEFIT OF

a Lindblad-National Geographic certified photo instructor (CPI) at your side and at your service. He or she can help you with anything from camera settings to the basics of composition. Now, every guest—from iPhone camera users to advanced hobbyists—can stand side-by-side with skilled photographers, pick up tips in the field, and take great photos. Our CPIs are also trained naturalists, so they'll help you better understand wildlife behavior, too. Whether you're choosing a shutter speed to capture a tortoise or framing a sea lion against a killer backdrop, in-the-moment tips from accomplished pros will help you return home with your best photos ever.



▶ Learn more about Galápagos photo expeditions at expeditions.com/galaphoto.





NEW

ECUADOR'S AMAZON: YASUNÍ WILDLIFE PHOTO EXTENSION

GALÁPAGOS PRE-VOYAGE EXTENSION
6 DAYS/5 NIGHTS | FROM \$2,895

Visit expeditions.com for all categories, current rates, and details.

NATIONAL GEOGRAPHIC PHOTOGRAPHERS:

Sep 20, 2021: Jonathan Kingston
Jan. 24, 2022: Jonathan Kingston
Sep. 29, 2022: Rich Reid
Dec. 5, 2022: Jonathan Kingston

- Led by a National Geographic photographer and Lucas Bustamante, Ecuadorian photographic director of Tropical Herping.
- Two full days immersed in the jungle and rivers of Yasuni National Park, one of the most biodiverse places on Earth.
- Stay in the middle of it all at Napo Wildlife Center, just 20 cabins with all the amenities set on the banks of a black-water lagoon, created, operated and handled by the local community.
- With 10 species of monkey, resident giant river otters, a nearby clay lick attracting macaws and parakeets, observation towers and access to the wild, photographic opportunities are extraordinary.
- Paddle through the jungle with an expert local naturalist and a professional photographer
- Just a short flight from UNESCO-designated historic Quito, largest, best preserved colonial center in the Americas.
- Limited to 16 guests

▶ Learn more at expeditions.com/napo

EXPLORING GALÁPAGOS &
GALÁPAGOS + PERU—SO MUCH
TO SEE, DO, AND LEARN



REFINED OVER 50+ YEARS IN THE REGION, OUR CLASSIC 10-day expedition gives you time to revel in the wildness of Galápagos. Our itinerary provides an optimal balance of islands, terrain and wildlife, and a thoroughly rewarding immersion in the archipelago's magic—as well as the vibrant life of Galápagos' ocean, an integral part of our explorations. Take the time to disconnect from the rhythms and demands of daily life and experience the recharging effects of the tonic of wildness, as you discover the islands and the undersea.

And to make the most of your time and curiosity, take advantage of your proximity to add Machu Picchu & Peru's Land of the Inca to your expedition. Our well-curated and paced 16-day itinerary includes a thorough exploration of the Galápagos islands, plus a seamless transition to Machu Picchu, one of the world's premier archaeological sites. You'll lodge on the grounds in the spectacularly sited Belmond to see daybreak over the ruins. In addition, you'll explore the Sacred Valley of the Inca, the massive stone fortress of Ollantaytambo, experience the pervasive vitality of Inca culture in contemporary Lima and more.

EXPEDITION HIGHLIGHTS

- Visit a new island daily
- Walk among wildlife unfazed by your presence
- Snorkel, sometimes twice a day, with sea lions, sea turtles and abundant fish, or explore in a glass-bottom boat
- Head into the highlands to observe giant Galápagos tortoises in the wild
- See daybreak over the ruins at Machu Picchu from the fabled Sun Gate
- Discover Cusco's varied influences and visit the Sacred Valley of the Inca

▶ Visit [expeditions.com/galapagos](https://www.expeditions.com/galapagos) for itineraries.



ISABELA

Toast crossing the Equator at Volcán Ecuador, the northernmost of the island's six great shield volcanoes. Keep an eye open for whales and dolphins as you ply these rich waters, once the haunt of whalers and pirates.

GENOVESA

Sail to the remote northern realm of the Galápagos, a seabird paradise bathed in warm tropical waters.

SANTIAGO

Explore tide pools and search for fur seals in quiet grottos on this island where lava walks, a coastal forest, and kayaking along lava flows are high points.

BARTOLOMÉ

Climb to the summit of this volcanic wonderland, then snorkel and swim from a golden beach.

NORTH SEYMOUR

Encounter nesting frigatebirds, plus land and marine iguanas, and enjoy a beautiful coastal walk.

FERNANDINA

One of the most active oceanic volcanoes in the world, it's the youngest, most pristine island in Galápagos—and home to the strange flightless cormorant and the largest population of marine iguanas.

RÁBIDA

Snorkel along the rocky coastline among schools of tropical fish and curious sea lions, before landing on a brilliant red beach to look for both land and sea birds.

SANTA CRUZ

Call at Puerto Ayora, the largest town and headquarters of both the Charles Darwin Research Station and Galápagos National Park. Head to the lush, green highlands to see giant tortoises roaming in the wild.

FLOREANA

Follow a trail along a rose-pink lagoon across Punta Cormorant. Visit Post Office Bay, founded by 18th-century whalers, on this mysterious island adorned with green, rolling hills and freshwater springs.

**Please Note: Our in-depth expeditions sail between Isla San Cristóbal and Isla Baltra, and include Isla Santa Cruz and a careful selection of islands and visitor sites. All ship itineraries are subject to Galápagos National Park regulations.*

ITINERARY: GALÁPAGOS

10 DAYS/9 NIGHTS ABOARD
NATIONAL GEOGRAPHIC ENDEAVOUR II

FROM: \$7,560

Visit expeditions.com for all categories, current rates, and details.

EXPEDITION DETAILS

DATES: 2021-2022: Ten-day expeditions, departing Fridays

SPECIAL OFFERS:

- Book now and receive **FREE AIRFARE** between Miami and Galápagos OR fly from select home cities from \$249 or \$349 per person. Upgrade to business class starting at \$750. Offer available on on select 2021 and 2022 departures.
- **SAVE 10%** when you combine your Galápagos expedition with an Upper Amazon voyage.

For additional offer details, see page 40 or call.

SOUTH PLAZA

Sea lions greet us at South Plaza, an uplifted volcanic block carpeted in salt-loving succulents and teeming with wildlife.

SAN CRISTÓBAL

Search for red-footed boobies and the endemic mockingbird and lava lizard—found only on this easternmost island. Explore Baquerizo Moreno, where sea lion colonies thrive in the middle of town.



ESPAÑOLA

Home to swallow-tailed gulls, Española mockingbirds, Nazca boobies and, seasonally, the world's only population of waved albatross at Punta Suarez.



ITINERARY AT A GLANCE

Day 1	U.S. / Guayaquil, Ecuador
Day 2	Guayaquil / Galápagos / Embark
Days 3-8	Galápagos Islands aboard <i>National Geographic Endeavour II</i>
Day 9	Galápagos / Disembark / Guayaquil
Day 10	Guayaquil / U.S.

▶ Visit expeditions.com/galaet for a complete day-by-day itinerary. Or call to speak with an Expedition Specialist.

OPTIONAL EXTENSIONS

Make the most of your travel by exploring more on a pre-voyage extension to [Mashpi and Quito](#), or by continuing your adventure at iconic [Machu Picchu](#) or the [Amazon](#). See page 34-35 for more information.





**GUAYAQUIL, ECUADOR
DAY 1**

Upon arrival, Hotel Oro Verde.
Ask about extra nights and
extension options.

ECUADOR



**YOUR EXPEDITION BEGINS
IN THE GALÁPAGOS
DAYS 2-8**

Spend 7 immersive days
exploring diverse islands
and habitats. Enjoy up-close
encounters with remarkable
wildlife. Then, continue to
Peru and focus on human
achievement. See map and
island details on pages 24-25.

“If your time allows, take advantage of the incredible opportunities that abound in the region. Machu Picchu is simply awesome; and the deep steep in Inca culture our itinerary provides is great on its own, and an intriguing counterbalance to the wildness of Galápagos.”

— SVEN-OLOF LINDBLAD, CEO & Founder

ITINERARY: GALÁPAGOS + MACHU PICCHU & PERU'S LAND OF THE INCA

16 DAYS/15 NIGHTS ABOARD

NATIONAL GEOGRAPHIC ENDEAVOUR II + LAND EXCURSION

FROM: \$13,760

Visit expeditions.com for all categories, current rates, and details.

EXPEDITION DETAILS

DATES: 2021-2022: Year-round, weekly departures following Galápagos aboard *National Geographic Endeavour II*.

SPECIAL OFFER:

- Book now and receive **FREE ROUND-TRIP** economy group airfare from Miami to Galápagos / Lima to Cusco; ask about other U.S. gateways. Upgrade to business class to Guayaquil starting at \$750 on select dates. Offer available on select 2021 and 2022 departures.

For additional offer details, see page 40 or call.

ITINERARY AT A GLANCE

Day 1	U.S. / Guayaquil, Ecuador
Day 2	Guayaquil / Galápagos / Embark Ship
Days 3-8	Exploring the Galápagos Islands aboard <i>National Geographic Endeavour II</i>
Day 9	Galápagos / Guayaquil / Lima, Peru
Day 10	Lima / Cusco / Sacred Valley of the Inca
Day 11	Sacred Valley of the Inca
Day 12	Sacred Valley / Machu Picchu
Day 13	Machu Picchu / Cusco
Day 14	Cusco
Day 15	Cusco / Lima
Day 16	Lima / U.S.

- ▶ New for Peru 2022, stay two nights (Days 10-11) at Belmond Miraflores Park Lima. Visit expeditions.com/galapero for day-by-day itineraries. Or call to speak with an Expedition Specialist.

NATIONAL GEOGRAPHIC GUEST SPEAKER

Gain insight from National Geographic grantee, Peter Frost, or a colleague on our departures.

PERU

LIMA

DAY 9 / DAY 16

Arrive in Lima, Peru's thriving capital. Upon your return, celebrate with a private farewell lunch and discover the pre-Columbian treasures at the Larco Museum.

SACRED VALLEY & MACHU PICCHU DAYS 10-14

Spend two nights in the Sacred Valley. Watch twilight descend on Machu Picchu after the crowds have disappeared and overnight at the historic Belmond Sanctuary Lodge.

CUSCO

DAYS 14-15

Explore the rich culture and heritage of Cusco and surroundings from our base in the colonial center of this Inca imperial city.

ALL THE MAGIC OF GALÁPAGOS
& MACHU PICCHU—IN LESS TIME





DON'T HAVE THE TIME OR THE INCLINATION TO SPEND

10 days exploring Galápagos? Then, take advantage of our compact 7-day itinerary. Visit key islands, wander among iconic wildlife like blue-footed boobies, marine iguanas, giant tortoises, playful sea lions, and much more, all aboard the yacht-scaled 48-guest *National Geographic Islander*. Your more compact voyage will be as eventful and enriching as the longer voyage—but in less time.

Or choose the *Wild Galápagos & Peru Escape* and experience two iconic destinations, starting in Lima, in just 10 fast-paced days. Take the first-class Inca rail between Ollantaytambo and Machu Picchu to explore the legendary mountain retreat of Inca royalty. Remain late in the day to experience the sunset over the fabled sacred site. Then head for Galápagos to hike, kayak, paddleboard and Zodiac cruise among iconic wildlife and otherworldly escapes.

EXPEDITION HIGHLIGHTS

- Soak in the scenery and culture of the Sacred Valley of the Inca
- Journey between Ollantaytambo and Machu Picchu by Inca Rail
- Remain into the late afternoon at fabled Machu Picchu
- Overnight in Cusco, imperial capital of the Inca
- Experience all Galápagos offers in just one week
- Snorkel and kayak in rich waters among shimmering fish, sea turtles, penguins, and playful sea lions
- Walk among colonies of wildlife and seabirds unfazed by your presence
- Maximize your time in the islands with options every day
- Arrive early in Lima or stay on in Ecuador after—with a 2-night Quito extension.



**Please note: Our expeditions begin and end at Baltra, and include visits to Isla Santa Cruz and a careful selection of diverse islands. Each of our itineraries offers an optimal balance of wildlife, landscapes and experiences. All ship itineraries are subject to Galapagos National Park regulations.*

ITINERARY: WILD GALÁPAGOS ESCAPE

7 DAYS/6 NIGHTS ABOARD

NATIONAL GEOGRAPHIC ISLANDER

FROM: \$5,900

Visit expeditions.com for all categories, current rates, and details.

EXPEDITION DETAILS

DATES: 2021-2022: Seven-day expeditions depart Thursdays and Saturdays on *National Geographic Islander*.

SPECIAL OFFERS:

- Book now and receive **FREE AIRFARE** between Ecuador and Galápagos on select 2021-2022 departures.
- **SAVE 10%** when traveling with a group of 6 or more on select departures.

For additional details see page 40, or call.

ITINERARY AT A GLANCE

Day 1	U.S. / Guayaquil, Ecuador
Day 2	Guayaquil / Galápagos / Embark
Days 3-6	Galápagos aboard <i>National Geographic Islander</i> (See map on pages 24-25 for details.)
Day 7	Disembark / Baltra / Guayaquil / Depart

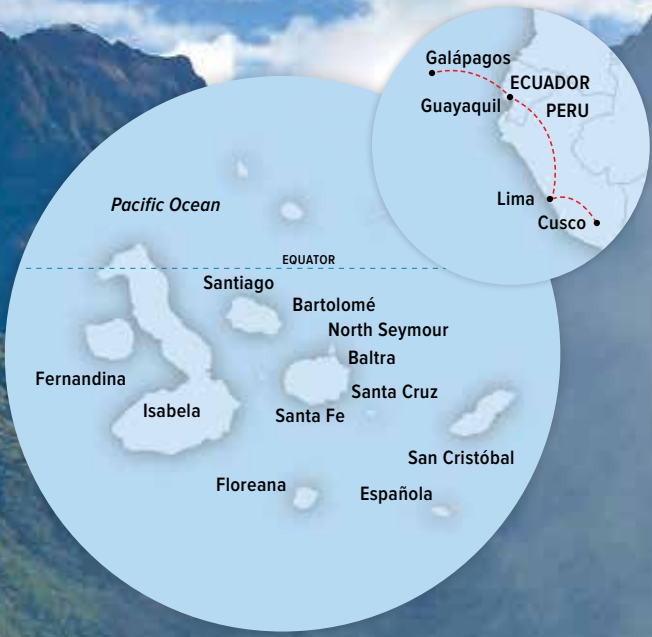
▶ Visit expeditions.com/wildgala for a complete day-by-day itinerary. Or call to speak with an Expedition Specialist.

NATIONAL GEOGRAPHIC EXPERT

National Geographic grantee, writer, and marine biologist **Greg Stone** will join the Dec. 4, 2021 departure. National Geographic educator, marine biologist, biologist, and filmmaker **Tierney Thys** will join the Feb. 26, 2022 departure.

OPTIONAL EXTENSION

Add a two-day post-voyage extension to UNESCO-designated Quito & famous Otavalo market. See pages 34-35 or visit expeditions.com/quito for details.



**Please note: Our expeditions begin and end at Baltra, and include visits to Isla Santa Cruz and a careful selection of diverse islands. Each of our itineraries offers an optimal balance of wildlife, landscapes and experiences. All ship itineraries are subject to Galápagos National Park regulations.*

ITINERARY: WILD GALÁPAGOS & PERU ESCAPE

10 DAYS/9 NIGHTS ABOARD

NATIONAL GEOGRAPHIC ISLANDER + MACHU PICCHU

FROM: \$7,190

Visit expeditions.com for all categories, current rates, and details.

EXPEDITION DETAILS

DATES: 2021-2022: Nine-day expeditions depart Saturdays on *National Geographic Islander*.

SPECIAL OFFERS:

- Book now and receive **FREE AIRFARE** between Ecuador and Galápagos on select 2021-2022 departures.
- **SAVE 10%** when traveling with a group of 6 or more on select departures.

For additional details see page 40, or call.

ITINERARY AT A GLANCE

Day 1	U.S. / Lima, Peru
Day 2	Lima / Cusco / Sacred Valley
Day 3	Machu Picchu
Day 4	Sacred Valley / Cusco
Day 5:	Cusco / Lima / Guayaquil
Days 6-9:	Guayaquil / Baltra / Galápagos aboard <i>National Geographic Islander</i>
Day 10:	Disembark / Baltra / Guayaquil / U.S.

- ▶ Visit expeditions.com/wildgalaperu for a day-by-day itinerary. Or call to speak with an Expedition Specialist.

OPTIONAL EXTENSIONS

Add a two-day pre-voyage extension in vibrant, cosmopolitan Lima. Visit expeditions.com/lima for details.

Add a two-day post-voyage extension to UNESCO-designated Quito & famous Otavalo market. See pages 34-35 or visit expeditions.com/quito for details.



BEYOND GALÁPAGOS

GOING TO GALÁPAGOS IS ONE OF THE BEST DECISIONS a traveler can make. It's not that far, and the rewards are immediately thrilling. And so are the possibilities that surround, even amplify, the extraordinary Galápagos experience. We've arrayed a set of choices that complement your adventure in the Enchanted Isles, and make the most of your time in this region—rich as it is in natural and cultural treasures. And, you can plan to explore further knowing that our Expedition Specialists can help with all the arrangements, including your flights. We are pleased to present Lindblad Air service for your greater convenience. Please contact an Expedition Specialist for air details.

We offer convenient Lindblad Air service whether you're simply flying roundtrip to and from Galápagos or choosing to add one of the featured extensions. Whether you're connecting to the group flight in Miami or traveling on your own from your gateway city, our air team will make getting to Galápagos seamless for you. Call for assistance.

SEE AND DO MORE: EXTEND YOUR JOURNEY



ADD TROPICAL ANDES & COLONIAL QUITO

Pre-Voyage **Galápagos** aboard *National Geographic Endeavour II*— 6 Days/5 Nights From \$2,690*

Explore Quito, a UNESCO World Heritage Site, with its dazzling colonial churches and bustling traditional markets. Then, immerse yourself in the Ecuadorian Chocó, one of the world top biodiversity hotspots, at Mashpi Lodge, set in a private reserve.



ADD UPPER AMAZON

Post-Voyage **Galápagos** aboard *National Geographic Endeavour II*— 10 days/9 Nights From \$7,550*

Fall under the spell of the Amazon and discover the pulse and flow of the world's mightiest river by seamlessly linking your Galápagos voyage to an Upper Amazon expedition aboard the lovely *Delfin II*. **Save 10%** when combining these expeditions.



ADD PERU: LAND OF THE INCA

Post-Voyage **Galápagos** aboard *National Geographic Endeavour II*— 8 Days/7 Nights From \$6,200*

Explore fabled Machu Picchu over two days, awakening at the only lodge on the mountain. Experience Cusco, ancient capital of the Inca and see Lima, the city of kings.



ADD QUITO & OTAVALO

Post-Voyage **Wild Galápagos Escape** and **Wild Galápagos & Peru Escape** aboard *National Geographic Islander*— 3 Days/2 Nights From \$585*

Explore Ecuador's beautifully preserved colonial capital and Otavalo in the Andean Highlands on this post-voyage taste of the cultural riches of Ecuador. Take the day to explore the celebrated handicraft markets, visit a nearby weaving village and relax over lunch at a historic hacienda.



ADD TASTE OF LIMA

Pre-Voyage **Wild Galápagos & Peru Escape** aboard *National Geographic Islander*—3 Days/2 Nights From \$440*

Relax and explore vibrant, cosmopolitan Lima on this pre-voyage extension, featuring two nights at the classic Lima Country Club Hotel in fashionable San Isidro. See the heart of colonial Lima, explore archaeological treasure at Museo Larco and linger over lunch in the serene museum garden.



ADD A NIGHT: CHOOSE GUAYAQUIL OR QUITO

Pre-Voyage **Galápagos** options

Arrive before your Galápagos voyage to relax and explore, taking advantage of the additional day to extend your adventure in Ecuador. Choose to explore tropical Guayaquil, or instead elect two nights in Quito and the Andes. One night in Guayaquil is already included before your expedition (which you can swap for Quito). Call for hotel and excursion options.

*Rates are per person based on double occupancy and are subject to change.



NATIONAL GEOGRAPHIC ENDEAVOUR II

CAPACITY: 96 guests in 52 outside cabins.

REGISTRY: Ecuador. **OVERALL LENGTH:** 236 feet.

PUBLIC AREAS: Forward lounge and bar accommodating all guests for presentations and gatherings, restaurant, large library with Mac kiosks, open-air observation deck, underwater gear area and dual Zodiac boarding platform, and “open Bridge,” where guests can meet the Captain and officers and learn about navigation.

MEALS: Served in a single, unassigned seating in a sociable, informal atmosphere with Ecuadorian flair.

CABINS: All face outside with large windows, and feature twin beds that convert to a queen. With private facilities and climate control, nightstands, desk, and storage. Seven sets of cabins with a connecting door.

EXPEDITION EQUIPMENT: Zodiacs, glass-bottom boat, kayaks and paddleboards, snorkel gear and wetsuits for both adults and children, video microscope and underwater video camera.

SPECIAL FEATURES: Lindblad-National Geographic certified photo instructor, shipboard doctor, video chronicler, National Geographic Global Explorers family program, snorkel instruction, Wi-Fi access, laundry service, Global Gallery.

WELLNESS: LEXSpa and fitness center, exercise classes, and wellness specialist.

SELF-DISINFECTING SHIPS: Lindblad Expeditions became the first self-disinfecting fleet with the rollout of the ACT CleanCoat™ system in 2019. This photocatalytic cleaning process activates when illuminated, continuously breaking down unwanted microbes such as bacteria, viruses, mold, and airborne allergens. The positive environmental impacts of this non-toxic, chemical-free system are many: less plastic in the supply chain and waste stream, and more than one million gallons of water saved annually. The system lowers our carbon footprint and creates a cleaner, healthier shipboard environment for guests and crew alike.



From top: Relaxing in the library; onboard gym with million-dollar views.



Clockwise from above: Full-service dining with unassigned seating; a twin-bed cabin; Suite C, the largest on the ship.

CATEGORY 1: Upper Deck, Forward #201, 202

CATEGORY 2: Upper Deck #211, 213-219, 221, 222, 224-229

CATEGORY 3: Lounge Deck #311, 313-319, 321, 322, 324, 326, 328, 330

CATEGORY 4: Bridge Deck #409, 411-414, 416, 418

SUITE A: Lounge Deck, Mid-Ship #320—with two windows, larger bath, arm chair. Connecting door to #322.

SUITE B: Bridge Deck, Mid-Ship #420, 422—with two floor-to-ceiling windows, larger bath, convertible sofa for a third person.

SUITE C: Bridge Deck, Mid-Ship #415—with two large windows, larger bath, separate sitting area with convertible sofa for a third person and arm chairs, largest cabin on ship.

CATEGORY 2 SOLO: Upper Deck #203-209

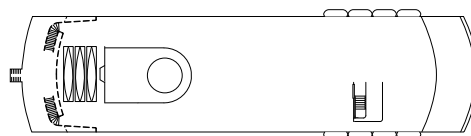
CATEGORY 3 SOLO: Lounge Deck #325, 327

NOTE: All cabins feature the option of two twins or a queen bed, plus large window(s), desk, chair, and closet.

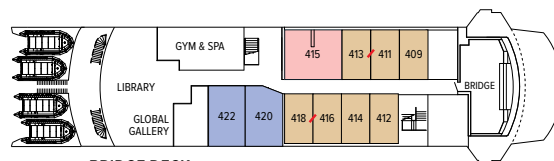
CONNECTING CABINS: #226/228, 227/229, 315/317, 316/318, 320/322, 411/413, 416/418

TRIPLE OCCUPANCY: #224, 225, 326, 328 with fold-down upper third bunk, Suites B and C with convertible sofa bed. Third person rates are one-half per person double occupancy rate.

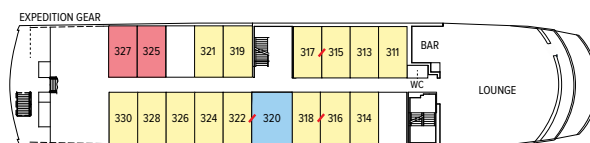
SHARED ACCOMMODATIONS: Shares can be arranged at the double occupancy rate in Categories 1 and 2.



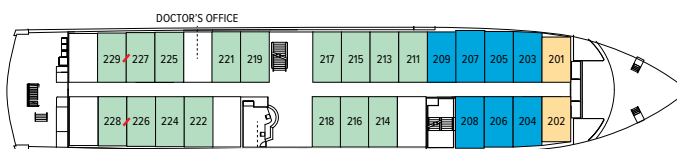
OBSERVATION DECK



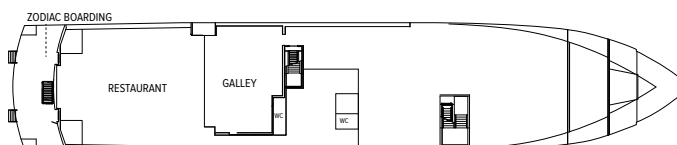
BRIDGE DECK



LOUNGE DECK



UPPER DECK



MAIN DECK

↗ indicates adjoining cabins

SEE MORE ONLINE: Learn more about *National Geographic Endeavour II* at expeditions.com/endeavourii



NATIONAL GEOGRAPHIC ISLANDER

CAPACITY: 48 guests in 24 outside cabins.

REGISTRY: Ecuador. **OVERALL LENGTH:** 164 feet.

PUBLIC AREAS: Open-air observation deck, second covered outside deck with hammocks, tables and chairs. Lounge and bar accommodating all guests for presentations and gatherings, dining room, library, Mac kiosks and Internet. The Captain and officers welcome guests to visit the open Bridge.

MEALS: Served in a single, unassigned seating in a sociable, informal atmosphere with Ecuadorian flair.

CABINS: All have a window with an outside view, private facilities, ample storage and climate controls. Bed can be configured as two twins or as a single queen.

EXPEDITION EQUIPMENT: Zodiacs, a fleet of kayaks and paddleboards, snorkel gear and wetsuits for both adults and children, video microscope and underwater video camera.

SPECIAL FEATURES: Shipboard doctor, Lindblad-National Geographic certified photo instructor, video chronicler, snorkel instruction, Wi-Fi access, laundry service, National Geographic Global Explorers family program, Global Gallery.

WELLNESS: LEXSpa and fitness center, exercise classes, and wellness specialist.

SELF-DISINFECTING SHIPS: Lindblad Expeditions became the first self-disinfecting fleet with the rollout of the ACT CleanCoat™ system in 2019. This photocatalytic cleaning process activates when illuminated, continuously breaking down unwanted microbes such as bacteria, viruses, mold, and airborne allergens. The positive environmental impacts of this non-toxic, chemical-free system are many: less plastic in the supply chain and waste stream, and more than one million gallons of water saved annually. The system lowers our carbon footprint and creates a cleaner, healthier shipboard environment for guests and crew alike.



From top: Enjoy fine dining aboard; have a quiet moment in the ship's library;



Clockwise from above: Relax in a hammock on National Geographic Islander's covered deck; a category 4 cabin and a category 5 cabin offer spacious accommodation.

CATEGORY 1: Main Deck, Forward #201-206

CATEGORY 2: Main Deck #207-210, Bridge Deck #301, 302

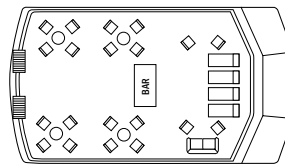
CATEGORY 3: Bridge Deck #303-306. Cabins 305 and 306 can accommodate a third person with sofa bed.

CATEGORY 4: Upper Deck #403-408—with outside, glassed-in terraces with windowed door and seating.

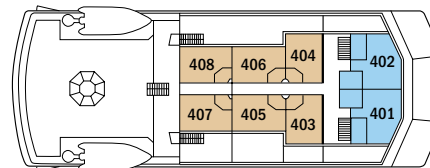
CATEGORY 5: Upper Deck, #401 and 402—forward facing with additional seating, desk, wrap-around windows, glassed-in terrace with seating. Largest cabins aboard.

NOTE: All cabins offer two twin beds that can be converted to a queen. Solo occupancy in categories 1 and 2 only. Third person rates for cabins 305 and 306 are one-half per person double occupancy rate.

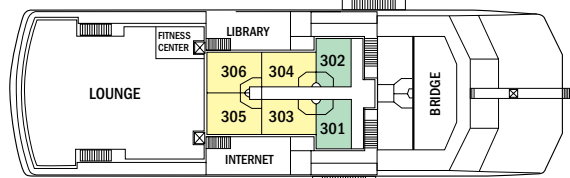
SHARED ACCOMMODATIONS: Shares can be arranged at the double occupancy rate in Categories 1 and 2 only.



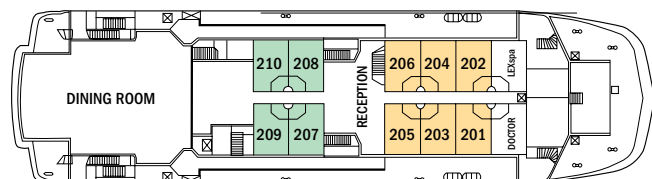
SUN DECK



UPPER DECK



BRIDGE DECK



MAIN DECK

SEE MORE ONLINE: Learn more about National Geographic Endeavour II at expeditions.com/islander

LINDBLAD AIR TAKES YOU THERE

SELECT DEPARTURES: FROM FREE
TO LOW AIRFARE*—YOUR CHOICE

ROUND-TRIP GALÁPAGOS:

From Miami

Free

From New York, Philadelphia, Washington D.C.

From \$249

From Chicago, Phoenix, Dallas, Los Angeles, San Francisco

From \$349

Other gateway cities available. Call for details.

Business class upgrades available starting at \$750. Call for details.

Use our convenient air service whether you're simply flying round-trip to and from Galápagos or extending your time in the region (see pages 34-35 for intriguing options). We'll handle your flights whether you're connecting to the group flight in Miami or traveling on your own from your gateway city. Our dedicated air team will make getting to Galápagos seamless for you.

*All offers are valid on select departures and for new bookings only. Must be ticketed by Lindblad Expeditions and are subject to availability at time of booking. Offer on American Airlines only, economy class. In the case that offered Miami flights are no longer available, Lindblad reserves the right to issue a credit.



TAKE ADVANTAGE OF OUR SPECIAL OFFERS

MAKE THE MOST OF YOUR TIME IN THE REGION AND SAVE 10% when you stay aboard for back-to-back voyages in Galápagos or combine your Galápagos expedition with the Upper Amazon.

TAKE THE KIDS & SAVE \$500 Share the wonder of Galápagos with children under 18 and take \$500 off the double occupancy rate per child. Our connecting cabins, triples and suites book quickly, so act fast.

WILD ESCAPES INTRODUCTORY OFFER: TRAVEL WITH 6 OR MORE & SAVE 10% Traveling with family or sharing an adventure with friends often doubles the pleasure. So, we're doubling the incentive on select departures—save 10% when traveling as a group of 6 or more.

On Galápagos and Peru departure dates not included in this introductory offer, save 5% when traveling as a group of 8

or more. These savings are applicable to voyage fares only, and are not valid on extensions or airfare. Deposit, final payments, and cancellation policies for group travel vary from our regular policy.

BAR TAB AND WI-FI INCLUDED Travel aboard any *National Geographic Islander* or *National Geographic Endeavour II* voyage and we will cover your bar tab. Complimentary bar offer excludes certain premium brands of alcohol. Free Wi-Fi, up to one hour a day per person aboard any *National Geographic Islander* and *National Geographic Endeavour II* departure. Visit our website or call for details.

COMBINE OFFERS Certain offers may be combinable, up to two savings opportunities except where noted otherwise. For example, travel with a group of 8 or more on back-to-back expeditions, and take advantage of both savings!

Photo Credits: Jonathan Aguas, John Bodner, Lucas Bustamante, Charles O. Cecil/Alamy, Alexandra Daley-Clark, Stewart Cohen, Jennifer Davidson, Ana Esteves, Bennett Goldberg, Cristie Guevara, Robert Harding/Alamy, Kristin Hettermann, Ralph Lee Hopkins, imageBROKER/Alamy, istock, Alex Krowiak, Liza Díaz Lálava, Nature Picture Library, Jeff Litton, Sven-Olof Lindblad, Cindy Manning, Mehdi33300/Alamy, Michael S. Nolan, Harald von Radebrecht/Alamy, R. Aaron Raymond, Marco Ricca, Carlos Romero, Shutterstock, David Spiegel, Socrates Tomala, David Vargas.

GALÁPAGOS + UPPER AMAZON | 18 DAYS/17 NIGHTS ABOARD NATIONAL GEOGRAPHIC ENDEAVOUR II AND DELFIN II FROM: \$15,110

EXPEDITION DETAILS: Post-voyage extension for Galápagos aboard *National Geographic Endeavour II* or Machu Picchu & Peru's Land of the Inca on select dates.

ITINERARY AT A GLANCE

Days 1-8:	Per Galápagos itinerary on pages 24-25.
Day 9:	Galápagos / Disembark / Guayaquil / Lima, Peru
Day 10:	Lima / Iquitos / Nauta / Embark
Days 11-16:	Pacaya-Samiria National Reserve
Day 17:	Nauta / Disembark / Iquitos / Lima
Day 18:	Lima / U.S.

▶ Visit expeditions.com/amazon for a day-by-day itinerary. Or call to speak with an Expedition Specialist.

SPECIAL OFFER:

Save 10% when you combine Upper Amazon with Galápagos. Or, save 10% when you combine Upper Amazon with Peru. Subject to availability.



RESERVATION INFORMATION

Terms & Conditions: Terms & Conditions: For complete terms and conditions please visit expeditions.com/terms

Pricing: For best pricing book early. Prices quoted in this brochure are valid as of the time of printing, are subject to modification based on select departures and availability at time of booking, and are not guaranteed until booking and required deposit is made. Under normal conditions, the total expedition price is guaranteed at the time of booking. However, our expedition pricing is determined far in advance of initial departure on the basis of then-existing projections of fuel and other costs. In the event of increases in those costs including, but not limited to, increases in the price of fuel, currency fluctuations, increases in government taxes or levies, or increased security costs, we reserve the right to adjust the price of your expedition or add a surcharge to cover such unexpected increases. We will always provide an explanation of the reason for increase in pricing. Visit expeditions.com or call for the most up-to-date pricing.

Pricing Includes: All accommodations aboard ship or in hotels per itinerary or similar; all meals and beverages aboard ship (excluding certain premium brands of alcohol); meals on land as indicated, accompanied by nonalcoholic beverages; Wi-Fi up to one hour a day per person; air transportation where indicated as included; shore excursions; sightseeing and entrance fees; special access permits; transfers to and from group flights; use of snorkeling equipment and wetsuits (where applicable); use of kayaks and/or stand-up paddleboards (where applicable); tips (except to ship's crew); taxes and service charges; services of a ship physician and services of our expedition staff. Unused services or items included in our programs are non-refundable.

Not Included: Air transportation (except where specified as included), extensions, passport, visa, immigration fees, meals not indicated, travel protection plan, tips to ship's crew; items of a personal nature, such as internet access, voyage chronicle, and laundry.

Airfare: For all programs, airfare is an additional cost unless otherwise indicated. We will gladly assist in making your air arrangements for a \$50 per person service fee.

Reservations: To reserve your place, an advance payment is required at the time of reservation. Receipt of advance payment indicates your acceptance of the terms and conditions. Visit expeditions.com/terms for complete details.

Final Payment: Final payment is due in full 90 days prior to departure. Payment schedules may vary for certain longer voyages due to high demand for these voyages. We reserve the right to cancel your reservation if payment has not been received by final payment due date.

Travel Protection Plan: We strongly recommend that you take advantage of

our Travel Protection Plan. This plan offers comprehensive coverage to protect you from cancellation fees, costs incurred due to trip delays/interruption, medical assistance, and damaged or lost baggage, and provides medical assistance and evacuation during your travels. Our Travel Protection Plan is available for U.S. residents only and may be purchased any time prior to final payment due date. If you are not satisfied for any reason, you may return your plan within 10 days after purchase. Your premium will be refunded if canceled within 10 days, provided you have not already departed on the trip or filed a claim. When so returned, the coverage under the plan is void from the original date of purchase.

Responsibility and Other Terms & Conditions: Certain provisions concerning, among other things, limitations of Lindblad Expeditions' and National Geographic Expeditions' (a division of National Geographic Partners, LLC) liability for loss of property, injury, illness, or death during the voyage will be provided to all guests on the ship's ticket sent prior to departure, and are also available on our website at expeditions.com/terms, or upon request. By registering for a trip, the guest agrees to all such terms and conditions.

Note: Itineraries and prices listed in this brochure are as of publication date and are subject to change.

Smoking and Vaping Policy: Smoking and Vaping are allowed only in designated outdoor areas.

Cancellation Policy: Call for details or visit expeditions.com/book-assured.

©2021 Lindblad Expeditions

Lindblad Expeditions and the Eye are the trademarks of Lindblad Expeditions.

All rights reserved.

©2021 National Geographic Partners, LLC. All Rights Reserved.

NATIONAL GEOGRAPHIC and the Yellow Border are trademarks of National Geographic Society and used with permission.

For Reservations:

Contact your travel advisor or Lindblad Expeditions

1.800.EXPEDITION (1.800.397.3348)

Reservation Hours: Monday – Friday 9am – 9pm ET

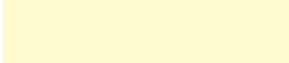
Saturday & Sunday 10am – 5pm ET

Lindblad Expeditions, Inc., 96 Morton Street, New York, NY 10014

Phone: 212.261.9000 • Fax: 212.265.3770

For additional information and online reservations, visit us at: expeditions.com

Account Number:



1.800.EXPEDITION | WWW.EXPEDITIONS.COM

♻️ Printed on 10% recycled content paper with soy-based inks. We recommend that you pass this along for others to enjoy or recycle.

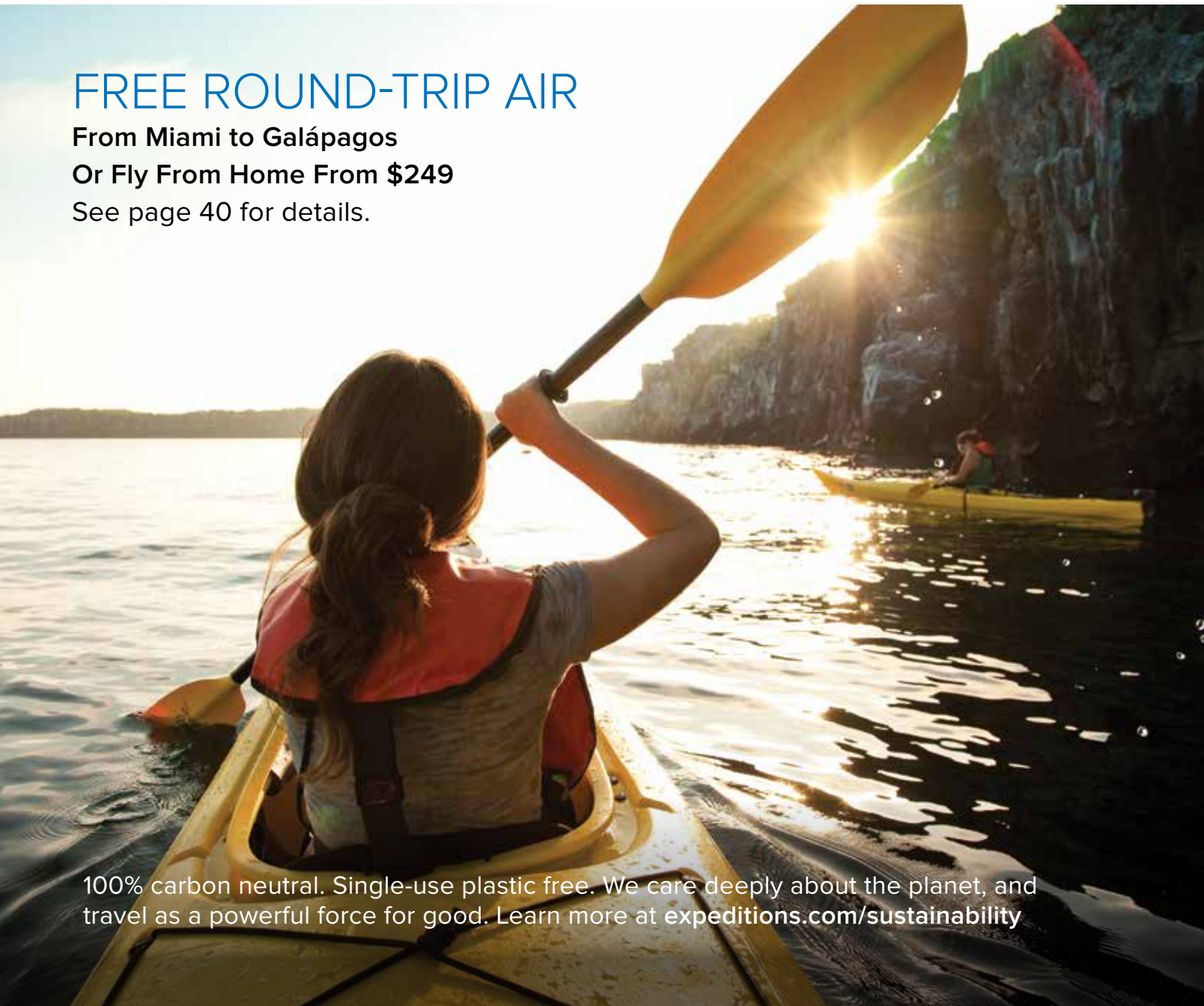
GAL-021

FREE ROUND-TRIP AIR

From Miami to Galápagos

Or Fly From Home From \$249

See page 40 for details.



100% carbon neutral. Single-use plastic free. We care deeply about the planet, and travel as a powerful force for good. Learn more at [expeditions.com/sustainability](https://www.lindblad.com/expeditions.com/sustainability)