

GALÁPAGOS

THE MOST
ENTERTAINING
ISLANDS IN
THE WORLD

REMARKABLE
WILDLIFE, SO
MUCH TO SEE
DO AND LEARN

PLUS
FREE AIR
ON SELECT
DATES

Floreana Island, Galápagos

1.22°S, 90.42°W

WHEN IT DAWNS ON YOU THAT GROUP TRAVEL DOESN'T MEAN BEING HERDED IN A GROUP

Each day you choose which activities interest you, which members of the expedition team you want to join, and which other guests you'd enjoy hanging out with. You may all be on the same ship but you aren't in the same boat. It's your vacation.

THAT'S THE EXHILARATION OF DISCOVERY



TABLE OF CONTENTS

- 2** Where Awesome Is
- 4** Serendipity, Naturally
- 6** All About Teamwork
- 8** Go Your Own Way
- 10** National Geographic Experts
- 12** Where Families Connect
- 14** Our Ships
- 16** Exploring Galápagos & Peru
- 18** Galápagos
- 20** Wild Galápagos Escape
- 22** Galápagos + Machu Picchu & Peru's Land of the Inca
- 24** Wild Galápagos & Peru Escape
- 26** Explore More
- 28** *National Geographic Islander*
- 30** *National Geographic Endeavour II*
- 32** Special Offers
- 33** Reservation Information

Cover: Red footed booby. © David Jaffe.

Above: Flamingos, Floreana Island. ©Ralph Lee Hopkins.



DISCOVER THE JOY OF WILD
ANIMALS SIMPLY LIVING THEIR
LIVES IN FRONT OF YOU





ON AN AFRICAN SAFARI, YOUR GUIDES HAVE TO WORK HARD to ensure you'll spot one of the often-elusive 'big five' species. In Galápagos, no binoculars required. Chances are, your naturalists will have to route you around the charismatic endemic species that cross your path, graze beside you, take a break, or take a nap pretty much anywhere they want. There's always fascinating behavior to observe and learn about—courtship, nesting, raising young, feeding, defending territory and more. And because Galápagos' animals don't fear humans, you'll have a rare experience of closeness—literally and figuratively. You could visit Galápagos 50 times, as Sven Lindblad has, and see something new each time, any time of the year.

Travel with us, and our 50+ years of experience guarantees you exciting opportunities every day. As do our two ships. Choose the yacht-scaled 48-guest *National Geographic Islander*, or the 96-guest *National Geographic Endeavour II*. With different personalities to suit a range of different travel tastes, both are equally well-equipped for getting you out on thrilling, personal explorations, and rewarding you with comfort and amenities.

“Galápagos National Park and Charles Darwin Foundation were established 60 years ago this year—on the centennial of the publication of Darwin’s *Origin of Species*. And since the beginning, we have been an active partner in conservation. Lindblad Expeditions-National Geographic guests have donated more than \$8.7 million to important conservation, education, and research priorities in Galápagos. When my father came to Galápagos in 1967, he was astounded that the animals showed no fear of humans. The fact that you can have the exact same experience today is no accident—it’s thanks to these enlightened organizations.”

— SVEN-OLOF LINDBLAD
CEO & Founder

COME TO GALÁPAGOS ASSURED
YOU'LL SEE WHAT'S PROMISED
& RELY ON US TO SEE EVEN MORE



HOW DO YOU GET TO HAVE THE MOST FUN NATURE PROVIDES?

It happens because your entire crew is dead-set on creating unforgettable experiences for you. It happens because your captain, your expedition leader and the naturalists are joined at the hip when it comes to capitalizing on the opportunities that nature might present. It happens because your entire team is committed to doing what it takes so you can have spontaneous experiences, in addition to all the planned ones. And it happens because your entire expedition team is in love with Galápagos, knows what the best experiences are, and makes sure you have them. After all, you didn't come all this way to miss one moment of natural wonder: you came to get as close as possible. And catching the attention of balletic and playful sea lions while snorkeling in Galápagos waters is about as good as it gets. Can you laugh with a snorkel firmly cupped in your mouth? Yes, it happens every day here! It's a comedy, alright. And you're front row for the show.

Legendary expedition leader Lynn Fowler is retiring. A Galápagos naturalist since 1978, Lynn has made her home aboard National Geographic Islander since 2004. Deeply connected to Galápagos, Lynn is being honored in the same year we celebrate the 60th Anniversary of the Charles Darwin Foundation and the Galápagos National Park. And please plan to join Lynn in her last year!



“We just had an off-the-charts experience: snorkeling with bottlenose dolphins in the channel between Santiago and the Bainbridge islets! I had a small group of experienced snorkelers, including Kathryn & Anneka M. at Sombrero Chino. We were just getting out of the water, my panguero spotted the dolphins and off we went! We were able to jump in among them multiple times. Fantastic. We called the ship, and two more Zodiacs came out, so some of the others also had a look. But, by luck, those in my boat had an incredible half hour swim with dolphins! There was even a mother with a tiny, curious baby!”

— LYNN FOWLER



YOUR EXPEDITION TEAM IS ACE
AT DOING WHATEVER IT TAKES





IN MANY RESPECTS, GALÁPAGOS DOESN'T EXIST UNTIL YOU discover it. When you step off our ship, it's as if it's 1835 and you're Charles Darwin, disembarking the *Beagle* to explore the unexplored. But sometimes even the most intrepid of adventurers need a guide—and that's where we come in. Our team has the knowledge and the passion for Galápagos that will kindle yours. And our generous staff-to-guest ratio means you can gravitate to the naturalists whose personalities and interests match yours. They will do whatever it takes, from maintaining a lookout so you don't miss a passing whale; offering an extra snorkel when sea turtles are congregating nearby; or pausing on a walk, as it happens, to witness the birth of a sea lion pup. They'll help you to see, do, and absorb all the extraordinary experiences—in comfort, with inspiration, great conversations, and excellent dining included.

“It's absolutely amazing to me what the staff is willing and able to do to make each day extraordinary. We didn't just get to see Sierra Negro volcano erupting, that was amazing enough. We had a “LAVA BBQ” on deck, so everyone could enjoy the spectacle and have an incredible dinner too. Then the captain arranged with the naturalists and hotel staff to stay in the area, so that we could see and photograph the spectacle again at dawn. It was so exciting on every level. Impressive!”

— JAKE W. GUEST

YOU'RE EXPLORING GALÁPAGOS WITH THE FREEDOM TO ENJOY IT YOUR WAY

EACH DAY, WE PROVIDE A FRESH DESTINATION PLUS

all kinds of choices of what to do. Hike, paddleboard, kayak. Snorkel, arrange to dive, hang out with your photo instructor. But should you decide to sleep in, have a slow breakfast, and get a massage, nobody will look at you funny. You're on vacation. Your vacation. Our schedules are flexible and our itineraries more a function of what's to see than where we need to be. So, if you want to work up a sweat on your walk, snorkel every time it's offered, (often two times a day) or sit and breathe it all in—do it. It's your adventure. Our generous staff-to-guest ratio means you can always find a naturalist whose interests and approach you share. You're free to explore the ship, find your nook or cranny. And always welcome to come up to the Bridge and shoot the breeze with the captain and officers.

We enable Scuba divers to experience Galápagos' diverse marine life, by arrangement with a local dive operation. Available to intermediate and advanced divers with recent experience, diving is available on select *National Geographic Endeavour II* departures, at an additional cost. Speak with an Expedition Specialist for dates and details.





A woman in a khaki uniform is taking a photograph of a large tortoise in a grassy field. The tortoise is in the foreground, and the woman is in the background, slightly out of focus. The text is overlaid on the image.

WHAT WILL YOU CREATE WITH
LINDBLAD-NATIONAL GEOGRAPHIC
CERTIFIED PHOTO INSTRUCTORS TO
GUIDE YOU?



WHILE YOU'RE DISCOVERING GALÁPAGOS, YOU'LL HAVE the benefit of a Lindblad-National Geographic certified photo instructor (CPI) at your side and at your service. He or she can help you with anything from camera settings to the basics of composition. Now, every guest—from iPhone camera users to advanced hobbyists—can stand side-by-side with skilled photographers, pick up tips in the field, and take great photos.

AND TRAVEL WITH NATIONAL GEOGRAPHIC EXPERTS ON SELECT DEPARTURES



DONALD JOHANSON

The perfect companion for the 60th anniversary of the Charles Darwin Foundation and the Galápagos National Park, Dr. Johanson is the discoverer of the 3.2 million-year-old skeleton, Lucy, and a frequent contributor to *National Geographic* magazine: Oct. 4 & 11, 2019 on *National Geographic Endeavour II*.

**GALÁPAGOS
PHOTO EXPEDITIONS**

Travel with a National Geographic photographer on specific departures. Share the adventure to benefit from inspiration, tips, and superb storytelling techniques.

National Geographic photographers:

2019:

THOMAS PESCHAK

Nov. 29 & Dec. 6

@thomaspeschak

National Geographic Endeavour II

2020:

RICH REID

Jan. 11 & 18

@richreidphoto

ANNIE GRIFFITHS

Aug. 15 & 22

@anniegriffithsphotography

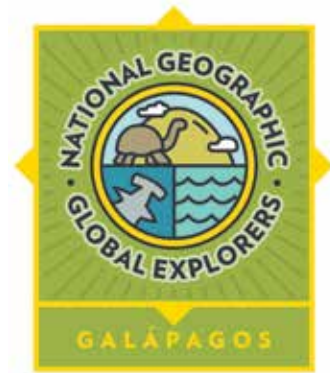
National Geographic Islander

▶ Visit expeditions.com/ngps to learn more about these National Geographic photographers.



THE MOST EXHILARATING DISCOVERIES ARE THE ONES YOU MAKE TOGETHER

WHETHER IT'S KAYAKING ALONG A LAVA WALL, EYED BY rare Galápagos penguins, laughing at blue-footed booby antics, or observing grazing tortoises in the highlands, we believe shared activities in a wild and unfamiliar environment can bring a family together. Our expeditions ensure seamless family getaways where everything is taken care of. Kids thrive in the safe, comfortable space of the ship where they can exercise a measure of autonomy. Our naturalists and National Geographic certified field educators are excellent role models who ably embed learning into every activity. And since we believe in the value of sharing Galápagos with your kids and grandkids for fun and learning, we're offering **\$1,000 savings on select 2019 departures for each child under 18.**



National Geographic Global Explorers Program

Our exclusive program for kids and teens is the only one of its kind in Galápagos travel. Developed in conjunction with National Geographic Education, it's designed to help kids and teens under 18 develop the attitudes, skills, and knowledge of an explorer. Families discover a unique way to explore and connect with each other and the natural world. And kids engage in a variety of cool optional activities, guided by a National Geographic certified field educator. Visit expeditions.com/family for program details.







TWO SHIPS, DIFFERENT PERSONALITIES WITH THE SAME ABILITY TO THRILL

WELL EQUIPPED FOR ADVENTURES OFF SHIP, *NATIONAL Geographic Islander* and *National Geographic Endeavour II* are equally well equipped for living well. Gathering places like the open decks, lounge and dining room contribute to the esprit de corps that is a hallmark of our expeditions. Fully stocked libraries serve those who want to learn more and those who want to settle in with a best-seller. Our wellness centers, fitness rooms, and on-deck stretching sessions with our wellness specialists add the mind-body connection to Galápagos' "tonic of wildness." And cossetting cabins, outfitted with our signature linens and feather duvets, provide the perfect ending to active days.

▶ See more ship details at expeditions.com/galaships

“My wife and I took the one week Galápagos excursion on the Lindblad *National Geographic Islander* in mid-February. It was a fantastic experience, exceeded our admittedly high expectations and... we can recommend highly...”

— CRUISE CRITIC MEMBER
ALERION28
Sailed February 2017.

OUR SHIPS



EXPLORE THE ENCHANTED
ISLANDS WITH THE COMPANY
BEST ADAPTED TO REVEAL THEM





ON THE FOLLOWING PAGES YOU WILL FIND FOUR WAYS TO experience Galápagos. Our classic 10-day itinerary (pg. 19) provides an optimal balance of terrain and wildlife, and a thoroughly rewarding immersion in the islands' magic. If you wish to see all the sites, you could join for two weeks, but be assured: you will see key islands and wonders whether you opt for a 10-day expedition or stay longer. Best of all, there is no 'better' week in Galápagos—just nuances from one week to the other. And for the most fascinating experience of the region's natural and cultural treasures, you can choose our *Galápagos + Peru* itinerary, a 16-day adventure (pg. 23). We've learned that a shorter timeframe is very important for some travelers. So, we designed our *Wild Galápagos Escape* (pg. 21) to provide the same experience, just in less time. Or pair a compact Galápagos expedition with a visit to Machu Picchu in just 9 days on our *Wild Galápagos & Peru Escape* (pg. 25).

And there's more: see the other experiences you can add on, before or after your Galápagos expedition. See pages 26-27 for details.

EXPEDITION HIGHLIGHTS

- Visit a new island daily • Walk among wildlife unfazed by your presence • Snorkel, sometimes twice a day, with sea lions, sea turtles and abundant fish, or explore in a glass-bottom boat (*National Geographic Endeavour II*) • Head into the highlands to observe giant Galápagos tortoises in the wild • Enjoy our daily cocktail hour Recap with engaging presentations, including the undersea, by naturalists and photographers

▶ Visit [expeditions.com/Galapagos](https://www.expeditions.com/Galapagos) for itineraries.

ISABELA

Toast crossing the Equator at Volcán Ecuador, the northernmost of the island's six great shield volcanoes. Keep an eye open for whales and dolphin as you ply these rich waters, once the haunt of whalers and pirates.

GENOVESA

Sail to the remote northern realm of the Galápagos, a seabird paradise bathed in warm tropical waters.

SANTIAGO

Explore tide pools and search for fur seals in quiet grottos on this island where lava walks, a coastal forest, and kayaking along lava flows are high points.

BARTOLOMÉ

Climb to the summit of this volcanic wonderland, then snorkel and swim from a golden beach.

NORTH SEYMOUR

Encounter nesting frigatebirds, plus land and marine iguanas, and enjoy a beautiful coastal walk.

FERNANDINA

One of the most active oceanic volcanoes in the world, it's the youngest, most pristine island in Galápagos—and home to the strange flightless cormorant and the largest population of marine iguanas.

RÁBIDA

Snorkel along the rocky coastline among schools of tropical fish and curious sea lions, before landing on a brilliant red beach to look for both land and sea birds.

SANTA CRUZ

Call at Puerto Ayora, the largest town and headquarters of both the Charles Darwin Research Station and Galápagos National Park. Head to the lush, green highlands to see giant tortoises roaming in the wild.

FLOREANA

Follow a trail along a rose-pink lagoon across Punta Cormorant. Visit Post Office Bay, founded by 18th-century whalers, on this mysterious island adorned with green, rolling hills and freshwater springs.

**Please Note: Our in-depth expeditions sail between Isla San Cristóbal and Isla Baltra, and include Isla Santa Cruz and a careful selection of islands and visitor sites. All ship itineraries are subject to Galápagos National Park regulations.*

ITINERARY: GALÁPAGOS

10 DAYS/9 NIGHTS ABOARD

*NATIONAL GEOGRAPHIC ENDEAVOUR II
AND NATIONAL GEOGRAPHIC ISLANDER*

FROM: \$7,290 (SEE PAGES 28-31 FOR DETAILS)

EXPEDITION DETAILS

2019-2020 Dates:

Ten-day expeditions, departing Fridays on *National Geographic Endeavour II* and Saturdays on *National Geographic Islander*.

SOUTH PLAZA

Sea lions greet us at South Plaza, an uplifted volcanic block carpeted in salt-loving succulents and teeming with wildlife.

SAN CRISTÓBAL

Search for red-footed boobies and the endemic mockingbird and lava lizard—found only on this easternmost island. Explore Baquerizo Moreno, where sea lion colonies thrive in the middle of town.



ESPAÑOLA

Home to swallow-tailed gulls, Española mockingbirds, Nazca boobies and, seasonally, the world's only population of waved albatross at Punta Suarez.



SPECIAL OFFERS:

- Book by Jul. 31, 2019 on select 2019 and 2020 departures for FREE AIRFARE between Miami and Galápagos OR fly from select home cities for \$199-\$299 per person. Upgrade to business class starting from \$500.
- Book by Jul. 31, 2019 and waive the solo traveler premium on solo cabins on select 2019 departures.
- Book by Jul. 31, 2019 on select 2019 Galápagos departures and take \$1,000 OFF KIDS UNDER 18.
- Your bar tab and Wi-Fi are complimentary on all departures. For additional offer details, see page 32 or call.

ITINERARY AT A GLANCE

Day 1	U.S./Guayaquil, Ecuador
Day 2	Guayaquil / Galápagos / Embark
Day 3-8	Galápagos Islands aboard <i>National Geographic Islander</i> or <i>National Geographic Endeavour II</i>
Day 9	Galápagos / Disembark / Guayaquil
Day 10	Guayaquil / Home

- ▶ Visit expeditions.com/galapagos for a complete day-by-day itinerary. Or call to speak with an Expedition Specialist.

OPTIONAL EXTENSIONS

Make the most of your travel by exploring more on a pre-voyage extension to Mashpi and Quito, or by continuing your adventure at iconic Machu Picchu. See page 26-27 for more information.





DON'T HAVE THE TIME OR THE INCLINATION TO SPEND 10 DAYS

exploring Galápagos? Then, take advantage of our compact 7-day itinerary. This is where our deep knowledge and experience in the islands comes in handy: we can ensure you will miss none of the highlights. Your more compact voyage will be as eventful and enriching as the longer voyage—but in less time.

ITINERARY: WILD GALÁPAGOS ESCAPE

7 DAYS/6 NIGHTS ABOARD**NATIONAL GEOGRAPHIC ISLANDER****FROM: \$5,730** (SEE PAGES 28-29 FOR DETAILS)**EXPEDITION DETAILS**

2019 Dates:

Aug. 31; Sep. 5, 14, 19; Oct. 31

Limited availability.

2020 Dates:

Feb. 1, 6; May 9, 14, 23, 28;

Jul. 4, 9, 18, 23; Aug. 1, 6, 29;

Sep. 3; Nov. 7, 12, 21, 26

SPECIAL OFFERS:

- Book by Jul. 31, 2019 for FREE AIRFARE between Ecuador and Galápagos on select 2019 and 2020 departures.
- Save 10% when traveling with a group of 6 or more on select departures.
- Your bar tab and Wi-Fi are complimentary on all departures.

For additional details see page 32, or call.

ITINERARY AT A GLANCE

Day 1	U.S. / Guayaquil, Ecuador
Day 2	Guayaquil / Galápagos / Embark
Day 3-6	Galápagos aboard <i>National Geographic Islander</i> (See map on pages 18-19 for details.)
Day 7	Disembark / Baltra / Guayaquil / Depart

- ▶ Visit [expeditions.com/wildgala](https://www.expeditions.com/wildgala) for a complete day-by-day itinerary. Or call to speak with an Expedition Specialist.

NATIONAL GEOGRAPHIC EXPERT

National Geographic grantee, writer, and marine biologist Greg Stone will join the Nov. 7 & 12, 2020 departures.

OPTIONAL EXTENSION

Add a two-day post-voyage extension to UNESCO-designated Quito & famous Otavalo market. See pages 26-27 or visit [expeditions.com/Quito](https://www.expeditions.com/Quito) for details.



**YOUR EXPEDITION BEGINS
IN THE GALÁPAGOS**

DAYS 2-8

Spend 7 immersive days exploring diverse islands and habits. Enjoy up-close encounters with remarkable wildlife. Then, transfer to Peru and a focus on human achievement. See map and island detail on pages 18-19.

GUAYAQUIL, ECUADOR

DAY 1

Upon arrival, transfer to the Hotel del Parque (*National Geographic Islander*) or Hotel Hilton Colón (*National Geographic Endeavour II*). Ask about extra nights.

ECUADOR

“If your time allows, take advantage of the incredible opportunities that abound in the region. Machu Picchu is simply awesome; and the deep steep in Inca culture our itinerary provides is great on its own, and as an intriguing counterbalance to the wildness of Galápagos.”

— SVEN-OLOF LINDBLAD, CEO & Founder



YOU CAN EASILY MAKE THE MOST OF YOUR TRAVEL TIME BY combining an exploration of Machu Picchu and Inca Peru with your Galápagos voyage. All you need is the time and curiosity, your Expedition Specialist will make all the arrangements—for a seamless transition from your ship to your accommodation at the stunning properties we stay at in Peru. See this overview for a sense of where you'll go and what you'll do.

ITINERARY: GALÁPAGOS + MACHU PICCHU & PERU'S LAND OF THE INCA

16 DAYS/15 NIGHTS ABOARD

NATIONAL GEOGRAPHIC ENDEAVOUR II

AND NATIONAL GEOGRAPHIC ISLANDER + LAND EXCURSION

FROM: \$13,080 (SEE PAGES 28-31 FOR DETAILS)

EXPEDITION DETAILS

Dates: Year-round, weekly departures following Galápagos aboard *National Geographic Islander* and *National Geographic Endeavour II*.

ITINERARY AT A GLANCE

- Day 1 U.S. / Guayaquil, Ecuador
- Day 2 Guayaquil / Galápagos / Embark Ship
- Day 3-8 Exploring the Galápagos Islands aboard *National Geographic Endeavour II* and *National Geographic Islander*
- Day 9 Galápagos / Guayaquil / Lima, Peru
- Day 10 Lima / Cusco / Sacred Valley of the Inca
- Day 11 Sacred Valley of the Inca
- Day 12 Sacred Valley / Machu Picchu
- Day 13 Machu Picchu / Cusco
- Day 14 Cusco
- Day 15 Cusco / Lima
- Day 16 Lima / U.S.

▶ Visit expeditions.com/wildgalaperu for a day-by-day itinerary. Or call to speak with an Expedition Specialist.

NATIONAL GEOGRAPHIC GUEST SPEAKER

Gain insight from National Geographic grantee, Peter Frost, or a colleague on our departures.

PERU

LIMA

DAY 9 / DAY 16

Arrive in Lima, Peru's thriving capital. Upon your return, celebrate with a private farewell lunch and discover the pre-Columbian treasures at the Larco Museum.

SACRED VALLEY & MACHU PICCHU

DAYS 10-14

Spend two nights in the Sacred Valley. Watch twilight descend on Machu Picchu after the crowds have disappeared and overnight at the historic Belmond Sanctuary Lodge.

CUSCO

DAYS 14-15

Explore the rich culture and heritage of Cusco and surroundings from our base in the colonial center of this Inca imperial city.



DISCOVER TWO ICONIC WONDERS IN 9 DAYS. BEGIN IN PERU

where you'll journey on the first-class Inca Rail between Ollantaytambo and Machu Picchu. Remain late in the day to experience sunset at the fabled sacred site. Then head for Galápagos to hike, kayak, paddleboard, and Zodiac cruise among iconic wildlife and otherworldly landscapes.

ITINERARY: WILD GALÁPAGOS & PERU ESCAPE

9 DAYS/8 NIGHTS ABOARD

NATIONAL GEOGRAPHIC ISLANDER + MACHU PICCHU

FROM: \$6,570 (SEE PAGES 28-29 FOR DETAILS)

EXPEDITION DETAILS

2019 Dates:

Sep. 7, 21; Nov. 2

Limited availability.

2020 Dates:

Feb. 8; May 16, 30; Jul 11, 25;

Aug. 8; Sep. 5; Nov. 14, 28

SPECIAL OFFERS:

- Book by Jul. 31, 2019 for FREE AIRFARE between Ecuador and Galápagos on select 2019 and 2020 departures.
- Save 10% when traveling with a group of 6 or more on select departures.
- Your bar tab and Wi-Fi are complimentary aboard *National Geographic Islander*.

For additional details see page 32, or call.

ITINERARY AT A GLANCE

Day 1	U.S. / Lima, Peru
Day 2	Lima / Cusco / Sacred Valley
Day 3	Machu Picchu
Day 4	Sacred Valley / Guayaquil
Day 5-8	Guayaquil / Galápagos aboard <i>National Geographic Islander</i>
Day 9	Disembark / Baltra / Guayaquil

- ▶ Visit expeditions.com/wildgalaperu for a day-by-day itinerary. Or call to speak with an Expedition Specialist.

OPTIONAL EXTENSION

Add a two-day post-voyage extension to UNESCO-designated Quito & famous Otavalo market. Visit expeditions.com/quito for details.



NOT SURPRISING: GALÁPAGOS IS NEAR OTHER NATURAL & CULTURAL TREASURES

GOING TO GALÁPAGOS IS ONE OF THE BEST DECISIONS

a traveler can make. It's not that far, and the rewards are immediately thrilling. And so are the possibilities that surround, even amplify, the extraordinary Galápagos experience. We've arrayed a set of choices that complement your adventure in the Enchanted Isles, and make the most of your time in this region—rich as it is in natural and cultural treasures. And, you can plan to explore further knowing that our Expedition Specialists will help make all your transitions seamless—including your flights. We are pleased to introduce you to Lindblad Air service for your greater convenience. Please contact an Expedition Specialist for air details.

We offer convenient Lindblad

Air service whether you're simply flying roundtrip to and from Galápagos or choosing to add one of the featured extensions. Whether you're connecting to the group flight in Miami or traveling on your own from your gateway city, our air team will make getting to Galápagos seamless for you. See page 32 for pricing.

TROPICAL ANDES & COLONIAL QUITO

Before your Galápagos adventure, explore Quito, a UNESCO World Heritage site, with its dazzling colonial churches and bustling traditional markets. Then immerse yourself in the Ecuadorian Chocó, one of the world's top biodiversity hotspots, at Mashpi Lodge, a National Geographic Unique Lodge of the World, set in a private reserve.

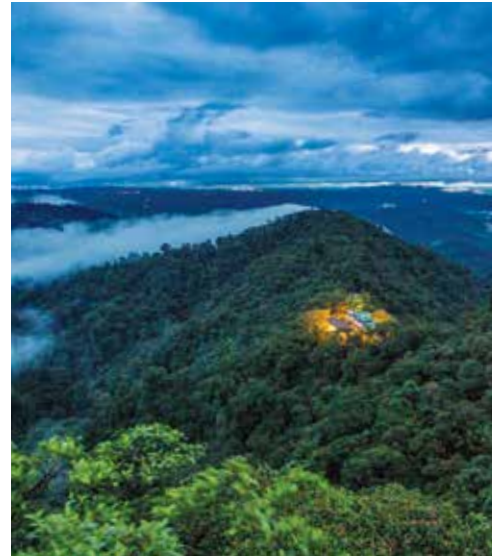
PRE-VOYAGE EXTENSION

6 DAYS/5 NIGHTS LAND EXCURSION / FROM: \$2,390

ITINERARY AT A GLANCE

DAY 1	Home/Quito, Ecuador	DAY 4	Mashpi Lodge
DAY 2	Quito	DAY 5	Mashpi Lodge/Quito
DAY 3	The Andes/Mashpi Lodge	DAY 6	Quito/Guayaquil/Galápagos

▶ Visit expeditions.com/mashpi for details.



GUAYAQUIL & HISTORIC HACIENDAS

Soak in the vibrant, coastal energy of Guayaquil, a port city situated on the Guayas River. Stroll the Malecón 2000, a riverside boardwalk and park; take in the tropical elegance of the Parque Histórico and spend the day at a traditional dairy, teak, and cacao farm in cowboy country outside the city. Arrive before Galápagos to relax and explore or linger after.

GUAYAQUIL HOTEL STAY

Hotel Hilton Colón Guayaquil (*National Geographic Endeavour II*)

Hotel Del Parque (*National Geographic Islander*)

▶ Visit expeditions.com/ecuador for details.



COLONIAL QUITO & OTAVALO

Find yourself a part of history in Quito, a bustling city with origins dating from the time of the Incas that is today the largest and best-preserved colonial center in all Latin America. Tour historic plazas and churches, spend the day at celebrated Otavalo market, and visit a gracious hacienda and family-owned rose farm. With most Galápagos flights beginning and ending in this Andean capital, it's simple to add a night or two in Quito with your choice of excursions.

QUITO HOTEL STAY

Hotel Hilton Colón Quito

Hotel Casa Gangotena

▶ Visit expeditions.com/ecuador for details.





NATIONAL GEOGRAPHIC ISLANDER

YACHT-SCALED AND TRIM, OFFERING EXPEDITION AMENITIES FOR JUST 48 GUESTS

CAPACITY: 48 guests in 24 outside cabins.

REGISTRY: Ecuador. **OVERALL LENGTH:** 164 feet.

PUBLIC AREAS: Open-air observation deck, second covered outside deck with hammocks, tables and chairs. Lounge and bar accommodating all guests for presentations and gatherings, dining room, library, Mac kiosks and Internet. The captain and officers welcome guests to visit the open bridge.

MEALS: Served in a single, unassigned seating in a sociable, informal atmosphere with Ecuadorian flair.

CABINS: All have a window with an outside view, private facilities, ample storage and climate controls. Bed can be configured as two twins or as a single queen.

CATEGORY 1: Main Deck, Forward #201-206

CATEGORY 2: Main Deck #207-210, Bridge Deck #301, 302

CATEGORY 3: Bridge Deck #303-306. Cabins 305 and 306 can accommodate a third person with sofa bed.

CATEGORY 4: Upper Deck #403-408—with outside, glassed-in terraces with windowed door and seating.

CATEGORY 5: Upper Deck, #401 and 402—forward facing with additional seating, desk, wrap-around windows, glassed-in terrace with seating. Largest cabins aboard.

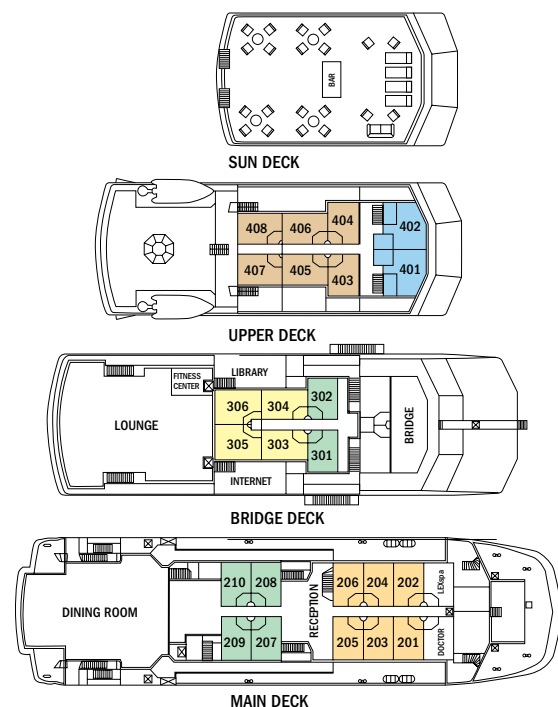
NOTE: All cabins offer two twin beds that can be converted to a queen. Sole occupancy in categories 1 and 2 only. Third person rates for cabins 305 and 306 are one-half per person double occupancy rate.

SHARED ACCOMMODATIONS: Shares can be arranged at the double occupancy rate in Categories 1 and 2 only.

EXPEDITION EQUIPMENT: Zodiacs, a fleet of kayaks and paddleboards, snorkel gear and wetsuits for both adults and children, video microscope and underwater video camera.

SPECIAL FEATURES: Shipboard doctor, Lindblad-National Geographic certified photo instructor, video chronicler, snorkel instruction, Wi-Fi access, laundry service, National Geographic Global Explorers family program, Global Gallery.

WELLNESS: LEXSpa and fitness center, exercise classes, and wellness specialist.





Above photos, from left: relax in a hammock on *National Geographic Islander's* covered deck; the ship anchored close to shore; enjoy fine dining aboard; have a quiet moment in the ship's library; a category 4 cabin and a category 5 cabin offer spacious accommodation.

Prices are per person, double occupancy unless indicated as solo.

ITINERARY		CAT. 1	CAT. 2	CAT. 3	CAT. 4	CAT. 5	CAT. 1 SOLO	CAT. 2 SOLO	ADVANCE PAYMENT	NOTE	
Galápagos: Aboard <i>National Geographic Islander</i> – 10 days/9 nights – Pages 18-19											
Departing Saturdays throughout the year	2019	\$7,650	\$8,760	\$9,730	\$10,350	\$12,620	\$11,490	\$13,140	\$1,000	International and internal Ecuador tickets must be issued separately for all Galápagos voyages. Sample International Airfares: Round-trip Miami/ Guayaquil: Economy from \$500; Business from \$1,050. Sample Internal Airfares: Guayaquil/Galápagos: Adult from \$520 Children (Under 12) from \$260. Call for sample Peru airfare.	
	2020	\$7,780	\$8,910	\$9,880	\$10,450	\$12,720	\$11,730	\$13,380	\$1,000		
Holiday	Dec. 21 & 28, 2019	\$8,790	\$9,990	\$11,230	\$11,890	\$14,510	\$13,230	\$15,110	\$1,000		
	Dec. 19 & 26, 2020	\$9,230	\$10,560	\$11,710	\$12,400	\$15,080	\$13,910	\$15,850	\$1,000		
New! Wild Galápagos Escape – 7 days/6 nights – Pages 20-21											
Aug. 31; Sep 5, 14, 19; Oct. 31	2019	\$5,730	\$6,530	\$7,220	\$7,690	\$9,350	\$8,490	\$9,720	\$750		International tickets must be issued separately. Sample international airfares: Round-trip Miami/Guayaquil: Economy \$500. Sample Internal Airfares: Guayaquil/Galápagos: Adult from \$520; Children (Under 12) from \$260.
Feb. 1, 6; May 9, 14, 23, 28; Jul. 4, 9, 18, 23; Aug. 1, 6, 29; Sep. 3; Nov. 7, 12, 21, 26	2020	\$5,800	\$6,610	\$7,300	\$7,710	\$9,330	\$8,620	\$9,810	\$750		
Galápagos + Machu Picchu & The Land of the Inca – 16 days/15 nights – Pages 22-23											
Departing Saturdays throughout the year	2019	\$13,540	\$14,650	\$15,620	\$16,240	\$18,510	\$18,780	\$20,430	\$1,500	International and internal Peru tickets must be issued separately. Sample international airfares: Round-trip Miami/ Lima/Guayaquil Economy \$500. Sample Lima/Cusco/Lima plus Lima/Guayaquil from \$935. Sample Internal Airfares: Guayaquil/Galápagos: Adult from \$520; Children (Under 12) from \$260.	
	2020	\$13,850	\$14,980	\$15,950	\$16,520	\$18,790	\$19,240	\$20,890	\$1,500		
Holiday	Dec. 14, 2019	\$14,270	\$15,380	\$16,350	\$16,970	\$19,240	\$19,510	\$21,160	\$1,500		
	Dec. 28, 2019	\$14,680	\$15,880	\$17,120	\$17,780	\$20,400	\$20,520	\$22,400	\$1,500		
	Dec. 19, 2020	\$16,050	\$17,380	\$18,530	\$19,220	\$21,900	\$22,180	\$24,120	\$1,500		
New! Wild Galápagos & Peru Escape – 9 days/8 nights – Pages 24-25											
Sep. 7, 21; Nov 2	2019	\$6,570	\$7,210	\$7,750	\$8,150	\$9,430	\$9,220	\$10,230	\$750	International and internal Ecuador tickets must be issued separately for all Galápagos voyages. Sample International Airfares: Round-trip Miami/ Guayaquil: Economy from \$500; Business from \$1,050. Sample Internal Airfares: Guayaquil/Galápagos: Adult from \$520 Children (Under 12) from \$260. Call for sample Peru airfare.	
Feb. 8; May. 16, 30; Jul. 11, 25; Aug. 8; Sep. 5; Nov. 14, 28	2020	\$6,660	\$7,310	\$7,860	\$8,190	\$9,490	\$9,380	\$10,330	\$750		

Prices quoted in this brochure are valid as of the time of printing, are subject to modification, and are not guaranteed until booking and required deposit is made. See our website at expeditions.com for the most up-to-date pricing.



NATIONAL GEOGRAPHIC ENDEAVOUR II

OUR NEWEST SHIP IN GALÁPAGOS, OFFERING EXPEDITION AMENITIES FOR 96 GUESTS

CAPACITY: 96 guests in 52 outside cabins.
REGISTRY: Ecuador. **OVERALL LENGTH:** 236 feet.

PUBLIC AREAS: Forward lounge and bar accommodating all guests for presentations and gatherings, restaurant, large library with Mac kiosks, open-air observation deck, underwater gear area and dual Zodiac boarding platform, and open bridge, where guests can meet the captain and officers and learn about navigation.

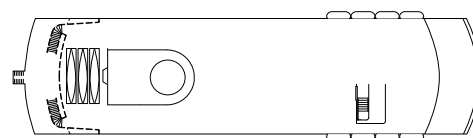
MEALS: Served in a single, unassigned seating in a social, informal atmosphere with Ecuadorian flair.

CABINS: All face outside with large windows, and feature twin beds that convert to a queen. With private facilities and climate control, nightstands, desk, and storage. Seven sets of cabins with a connecting door.

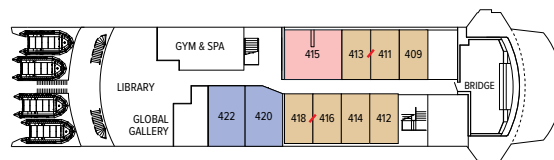
EXPEDITION EQUIPMENT: Zodiacs, glass-bottom boat, kayaks and paddleboards, snorkel gear and wetsuits for both adults and children, video microscope and underwater video camera.

SPECIAL FEATURES: Lindblad-National Geographic certified photo instructor, shipboard doctor, video chronicler, National Geographic Global Explorers family program, snorkel instruction, Wi-Fi access, laundry service, Global Gallery.

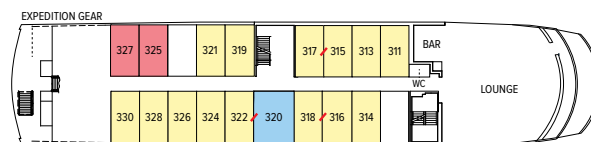
WELLNESS: LEXSpa and fitness center, exercise classes, and wellness specialist.



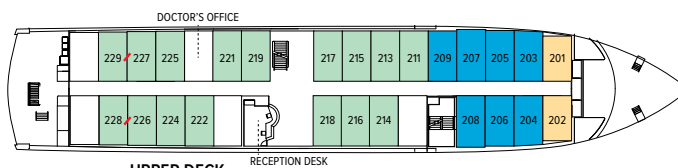
OBSERVATION DECK



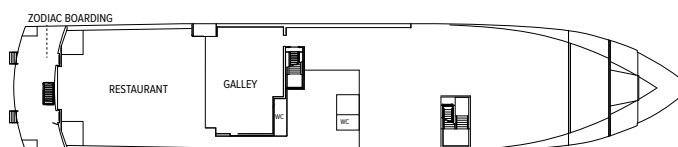
BRIDGE DECK



LOUNGE DECK



UPPER DECK



MAIN DECK

↗ indicates adjoining cabins



Above photos, from left: Relaxing in the library; the ship anchored close to shore; full-service dining with unassigned seating; onboard gym with million-dollar views; a twin-bed cabin; Suite C, the largest on the ship.

CATEGORY 1: Upper Deck, Forward #201, 202

CATEGORY 2: Upper Deck #211, 213-219, 221, 222, 224-229

CATEGORY 3: Lounge Deck #311, 313-319, 321, 322, 324, 326, 328, 330

CATEGORY 4: Bridge Deck #409, 411-414, 416, 418

SUITE A: Lounge Deck, Mid-Ship #320—with two windows, larger bath, arm chair. Connecting door to #322.

SUITE B: Bridge Deck, Mid-Ship #420, 422—with two floor-to-ceiling windows, larger bath, convertible sofa for a third person.

SUITE C: Bridge Deck, Mid-Ship #415—with two large windows, larger bath, separate sitting area with convertible sofa for a third person and arm chairs, largest cabin on ship.

CATEGORY 2 SOLO: Upper Deck #203-209.

CATEGORY 3 SOLO: Lounge Deck #325, 327.

NOTE: All cabins feature the option of two twins or a queen bed, plus large window(s), desk, chair, and closet.

CONNECTING CABINS: #226/228, 227/229, 315/317, 316/318, 320/322, 411/413, 416/418

TRIPLE OCCUPANCY: #224, 225, 326, 328 with fold-down upper third bunk, Suites B and C with convertible sofa bed. Third person rates are one-half per person double occupancy rate.

SHARED ACCOMMODATIONS: Shares can be arranged at the double occupancy rate in Categories 1 and 2.

Prices are per person, double occupancy unless indicated as solo.

ITINERARY		CAT. 1	CAT. 2	CAT. 3	CAT. 4	SUITE A	SUITE B	SUITE C	CAT. 2 SOLO	CAT. 3 SOLO	ADVANCE PAYMENT	NOTE	
Galápagos: Aboard <i>National Geographic Endeavour II</i> – 10 days/9 nights – Pages 18-19													
Departing Fridays throughout the year	2019	\$7,290	\$8,550	\$9,590	\$10,760	\$12,890	\$13,990	\$14,790	\$10,890	\$11,990	\$750	International and internal Ecuador tickets must be issued separately for all Galápagos voyages. Sample International Airfares: Round-trip Miami/Guayaquil: Economy from \$500; Business from \$1,050. Sample Internal Airfares: Guayaquil/Galápagos: Adult from \$520; children under 12 from \$260. Call for sample Peru airfare.	
	2020	\$7,410	\$8,700	\$9,730	\$10,910	\$13,070	\$14,100	\$14,920	\$11,010	\$12,240	\$750		
Holiday	Dec. 20 & 27, 2019	\$8,370	\$9,820	\$10,990	\$12,360	\$14,800	\$15,960	\$16,970	\$12,650	\$13,990	\$1,000		
	Dec. 18 & 25, 2020	\$8,520	\$10,010	\$11,200	\$12,550	\$15,040	\$16,220	\$17,170	\$12,670	\$14,080	\$1,000		
Galápagos + Machu Picchu & The Land of the Inca – 16 days/15 nights – Pages 22-23													
Departing Fridays throughout the year	2019	\$13,180	\$14,440	\$15,480	\$16,650	\$18,780	\$19,880	\$20,680	\$18,180	\$19,280	\$1,500		
	2020	\$13,480	\$14,770	\$15,800	\$16,980	\$19,140	\$20,170	\$20,990	\$18,520	\$19,750	\$1,500		
Holiday	Dec. 20, 2019	\$14,990	\$16,440	\$17,610	\$18,980	\$21,420	\$22,580	\$23,590	\$20,670	\$22,010	\$1,500		
	Dec. 11, 2020	\$14,230	\$15,520	\$16,550	\$17,730	\$19,890	\$20,920	\$21,740	\$19,280	\$20,510	\$1,500		
	Dec. 25, 2020	\$15,340	\$16,830	\$18,020	\$19,370	\$21,860	\$23,040	\$23,990	\$20,940	\$22,350	\$1,500		
Galápagos + Upper Amazon - 18 days/17 nights - Page 33 (Please call for dates and rates)													

Prices quoted in this brochure are valid as of the time of printing, are subject to modification, and are not guaranteed until booking and required deposit is made. See our website at expeditions.com for the most up-to-date pricing.

LINDBLAD AIR TAKES YOU THERE

NEW! FROM FREE TO LOW AIRFARE*—YOUR CHOICE

ROUNDRIP GALÁPAGOS:

From Miami	Free
From New York, Philadelphia, Washington D.C.	\$199
From Chicago, Phoenix, Dallas, Los Angeles, San Francisco	\$299

Business class upgrades available starting at \$500. Call for details.

Use our convenient air service whether you're simply flying roundtrip to and from Galápagos or extending your time in the region (see pages 26-27 for intriguing options). We'll handle your flights whether you're connecting to the group flight in Miami or traveling on your own from your gateway city. Our dedicated air team will make getting to Galápagos seamless for you.

JUST ANNOUNCED— HOME TOWN AIR!

Starting July 2019, enjoy savings from key gateway cities on American Airlines.

* On select departures. All offers are valid on select departures and for new bookings only. Must be ticketed by Lindblad Expeditions and are subject to availability at time of booking. Offer on American Airlines only, economy class. In the case that offered Miami flights are no longer available, Lindblad reserves the right to issue a credit.

TAKE ADVANTAGE OF OUR SPECIAL OFFERS

MAKE THE MOST OF YOUR TIME IN THE REGION AND SAVE 10% when you combine your Galápagos voyage or Peru expedition with an Upper Amazon voyage.

TAKE THE KIDS & SAVE \$500 Share the wonder of Galápagos with children under 18 and take \$500 off the double occupancy rate per child. Our connecting cabins, triples and suites book quickly, so act fast. Book by July 31, 2019 to double the offer, \$1,000 savings on select 2019 Galápagos departures.

WILD ESCAPES INTRODUCTORY OFFER: TRAVEL WITH 6 OR MORE & SAVE 10% Traveling with family or sharing an adventure with friends often doubles the pleasure. So, we're doubling the incentive on select departures— save 10% when traveling as a group of 6 or more. Simply book by July 31, 2019.

On Galápagos and Peru departure dates not included in this introductory offer, save 5% when traveling as a group of 8 or more. These savings are applicable to voyage fares only, and are not valid on extensions or airfare. Deposit, final payments, and cancellation policies for group travel vary from our regular policy.

BAR TAB AND WI-FI INCLUDED Travel aboard any *National Geographic Islander* or *National Geographic Endeavour II* voyage and we will cover your bar tab. Complimentary bar offer excludes certain premium brands of alcohol. Free Wi-Fi, up to one hour a day per person aboard any *National Geographic Islander* and *National Geographic Endeavour II* departure. Visit our website or call for details.

COMBINE OFFERS: Certain offers may be combinable, up to two savings opportunities except where noted otherwise. For example, travel with a group of 8 or more on back-to-back expeditions, and take advantage of both savings!

SOLO PREMIUM OFFER WAIVED FOR SOLO EXPLORERS Book by July 31, 2019 and waive the solo traveler premium on solo cabins on select 2019 departures aboard *National Geographic Islander* and *National Geographic Endeavour II*. Solo travelers will pay double occupancy rates for Solo occupancy in designated cabins/categories. On *Islander* the solo supplement is waived in categories 1 and 2 only. Valid for new bookings only. Subject to availability and may not be combined with other offers. Please call for details.

GALÁPAGOS + UPPER AMAZON | 18 DAYS/17 NIGHTS ABOARD NATIONAL GEOGRAPHIC ENDEAVOUR II AND DELFIN II FROM: \$14,580

EXPEDITION DETAILS: Post-voyage extension for *National Geographic Endeavour II* or Machu Picchu and Peru's Land of the Inca on select dates, at a 10% savings.

ITINERARY AT A GLANCE

Days 1-8: Per Galápagos itinerary on pages 18-19.
Day 9: Galápagos / Disembark / Guayaquil / Lima, Peru
Day 10: Lima / Iquitos / Nauta / Embark
Days 11-16: Pacaya-Samiria National Reserve
Day 17: Nauta / Disembark / Iquitos / Lima
Day 18: Lima / U.S.

▶ Visit expeditions.com/amazon for a day-by-day itinerary. Or call to speak with an Expedition Specialist.

SPECIAL OFFER:

- Save 10% when you combine Upper Amazon with Galápagos and/or Peru.
Subject to availability.



RESERVATION INFORMATION

Terms & Conditions: For complete terms and conditions please visit www.expeditions.com/terms

Costs Include: All accommodations aboard ships or in hotels per itinerary or similar, all meals and nonalcoholic beverages aboard ship, alcoholic beverages excluding certain premium brands, meals on land as indicated, Wi-Fi up to one hour a day per person, air transportation where indicated as included, shore excursions, sightseeing and entrance fees, special access permits, transfers to and from group flights, use of snorkeling equipment and wet suits, use of kayaks and stand-up paddleboards, tips (except to ship's crew), taxes and service charges, services of a ship physician and services of our expedition staff.

Not Included: Air transportation (except where shown as included), extensions, optional Scuba excursions, passport, visa, immigration fees, meals not indicated, travel protection plan, items of personal nature, such as select premium alcoholic beverages, voyage DVD, laundry. Gratuities to ship's crew are at your discretion.

Airfare: For all programs, airfare is an additional cost unless otherwise noted. We will gladly assist in making your air arrangements for a \$50 per person service fee.

Reservations: To reserve your place, an advance payment is required at the time of reservation. The per-person advance payment amount is: \$750 or \$1,000 for select holiday departures.

Final Payment: Final payment is due 90 days prior to departure. We reserve the right to cancel your reservation if payment has not been received by final payment due date.

Travel Protection Plan: We strongly recommend that you take advantage of our Travel Protection Plan. This plan offers comprehensive coverage to protect you from cancellation fees, costs incurred due to trip delays/interruption, medical assistance, and damaged or lost baggage, and provides medical assistance and evacuation during your travels. Our Travel Protection Plan is available for U.S. and Canadian residents only, and may be purchased any time prior to final payment due date. Travel Protection premiums are non-refundable once plan is purchased. If you are not satisfied for any reason, you may return your plan within 10 days after purchase. Your premium will be refunded if canceled within 10 days, provided you have not already departed on the trip or filed a claim. When so returned, the coverage under the plan is void from the original date of purchase.

Responsibility and Other Terms & Conditions: Certain provisions concerning, among other things, limitations of Lindblad Expeditions' and the National Geographic Society's liability for loss of property, injury, illness or death during the voyage

will be provided to all guests on the ship's ticket sent prior to departure, and are also available on our website at www.expeditions.com/terms, or upon request. By registering for a trip, the guest agrees to all such terms and conditions.

Note: Itineraries and prices listed in this brochure are as of publication date and are subject to change. Under normal conditions the total expedition price is guaranteed at the time of booking. However, our expedition pricing is determined far in advance of initial departure on the basis of then-existing projections of fuel and other costs. In the event of increases in those costs including, but not limited to, increases in the price of fuel, currency fluctuations, increases in government taxes or levies, or increased security costs, we reserve the right to adjust the price of your expedition or add a surcharge to cover such unexpected increases. We will always provide an explanation of the reason.

Cancellation Policy: Cancellation penalties may apply after payment is received. Please visit www.expeditions.com/terms for complete cancellation policies.

Unused services or items included in our programs are non-refundable.

©2019 Lindblad Expeditions

Lindblad Expeditions and the Eye are the trademarks of Lindblad Expeditions. All rights reserved. NATIONAL GEOGRAPHIC and the Yellow Border are the trademarks of the National Geographic Society. All rights reserved.

Photo Credits: Jonathan Aguas, Florian Blumm/Alamy, Stewart Cohen, Jennifer Davidson, Bennett Goldberg, Ralph Lee Hopkins, David Jaffe, Burt Johnson/Alamy, Sven-Olof Lindblad, Jeff Litton, Emily Mount, Michael S Nolan, Asbjorn M. Olsen/Alamy, Marco Ricca, Krista Rossow, Darrel Schoeling, David Spiegel, Jack Swenson, David Vargas.

For Reservations: Contact your travel advisor or Lindblad Expeditions

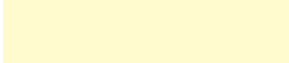
1.800.EXPEDITION (1.800.397.3348)

**Reservation Hours: Monday – Friday 9am – 9pm ET
Saturday & Sunday 10am – 5pm ET**


**Lindblad Expeditions, Inc., 96 Morton Street, New York, NY 10014
Phone: 212.261.9000 • Fax: 212.265.3770**

**For additional information and online reservations,
visit us on the Web: www.expeditions.com**

Account Number:



1.800.EXPEDITION | WWW.EXPEDITIONS.COM

 Printed on 10% recycled content paper with soy-based inks. We recommend that you pass this along for others to enjoy or recycle.

GAL-059

FREE ROUND-TRIP AIR

NEW! FROM FREE TO LOW AIRFARE

SEE PAGE 32 FOR DETAILS.

