

GALÁPAGOS

EXPLORE
THE MOST
INTERESTING
ISLANDS
ON EARTH

FREE AIR
ON SELECT
DATES

ABOARD NATIONAL GEOGRAPHIC ISLANDER AND
NATIONAL GEOGRAPHIC ENDEAVOUR II | 2018-2020







DEAR TRAVELER,

Galápagos straddles the equator, is mercifully absent of hurricanes and cyclones, and fluctuates little weather-wise throughout the year. The animals are always there for us to observe up-close and personally. It is a geography that's infinitely compelling, something you already know from countless magazine articles, nature programs, documentaries and more.

But what you might not know is that it is the preeminent, guaranteed, slam-dunk vacation option for families. It offers something for everyone. And even better, it offers so much for families to share—it's where meaningful memories get made together.

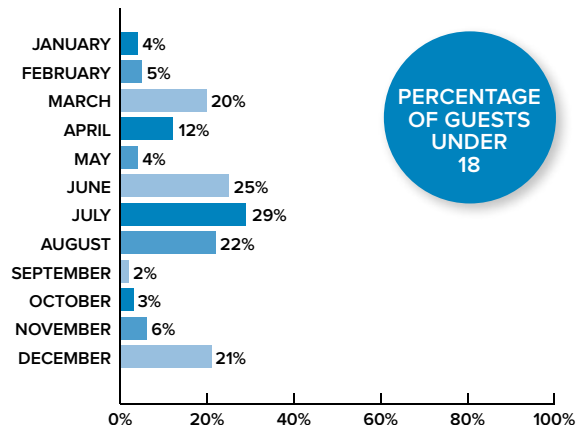
Galápagos attracts, at least with us, a very diverse audience, driven largely by times when families travel and don't. (See the chart at bottom right.) So, while Galápagos is always in season as far as wildlife and wonder are concerned, there are very distinct times to be there based on your preference in travel companions. If you don't like the pitter patter of children's feet, you can plan to visit when they're absent. And if you are planning to explore as a family, and want other kids around, you can rely on the fact that we understand how to meet needs and create opportunities for kids of all ages.

We've been at this for a very long time, ever since my father pioneered travel here in 1966.

Galápagos is a very special place, and we are totally committed to ensuring that our guests get the most out of their time here. As a consequence, if you choose to experience it with us, you will have stories to share for a lifetime and, at the same time, might very well become an ambassador for this remarkable wild place.

All the best,

Sven-Olof Lindblad



Cover photo: Galápagos Sea Lion, mother and pup, San Cristóbal Island © Rich Reid.

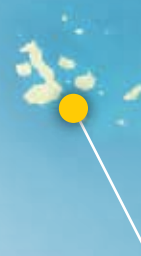
Left: East Pacific green turtles feeding on sea lettuce off Fernandina Island. © Michael S. Nolan.

Ships' registry: Bahamas

GALÁPAGOS:

THE JEWEL IN A REGIONAL CROWN

Going to Galápagos is one of the best decisions a traveler can make. It's not that far, and the rewards are immediately thrilling. Thrilling enough to make some travelers overlook the possibilities that surround, even amplify, the extraordinary Galápagos experience. So, we've arrayed them here for you—a set of choices that complement your experience of the Enchanted Isles, and make the most of your time in this region—rich as it is in natural and cultural treasures. And, you can plan to explore further knowing that our Expedition Specialists will help make all your transitions seamless—including your flights. We are pleased to introduce you to Lindblad Air service for your greater convenience. Please see page 29 for benefits and details.



One of the most important natural history destinations on Earth, the first UNESCO World Heritage site, and Darwin's laboratory, these islands are the magnet that draws all.





QUITO

Before or after Galápagos: explore Quito's Centro Histórico, a living neighborhood at the heart of the city. Or head into the volcanic highlands north of the city for an in-depth experience of the hand-crafts and music of the people of the Sierra. Page 17.



UPPER AMAZON

Heed your inner Darwin: stay on the natural history theme and spend 10 days exploring this lush, riverine habitat, comparing and contrasting it with what you discovered in Galápagos. Page 19.



MASHPI: A NATIONAL GEOGRAPHIC UNIQUE LODGE OF THE WORLD

Before your Galápagos adventure, discover mainland Ecuador on a six-day Tropical Andes & Colonial Quito extension. Explore Quito, a UNESCO World Heritage site, with dazzling colonial churches, markets and more. Then immerse yourself in a 2,600-acre biodiversity reserve in the Andes at Mashpi, a National Geographic Unique Lodge of The World. Page 17.



GUAYAQUIL

Take a fascinating one-day tour outside the city. See the lush natural scenery of Ecuador's tropical lowlands, passing the local scene along country roads, to a historic dairy farm and cacao plantation, where we are welcomed by the third-generation owners at Hacienda La Danesa. Page 17.



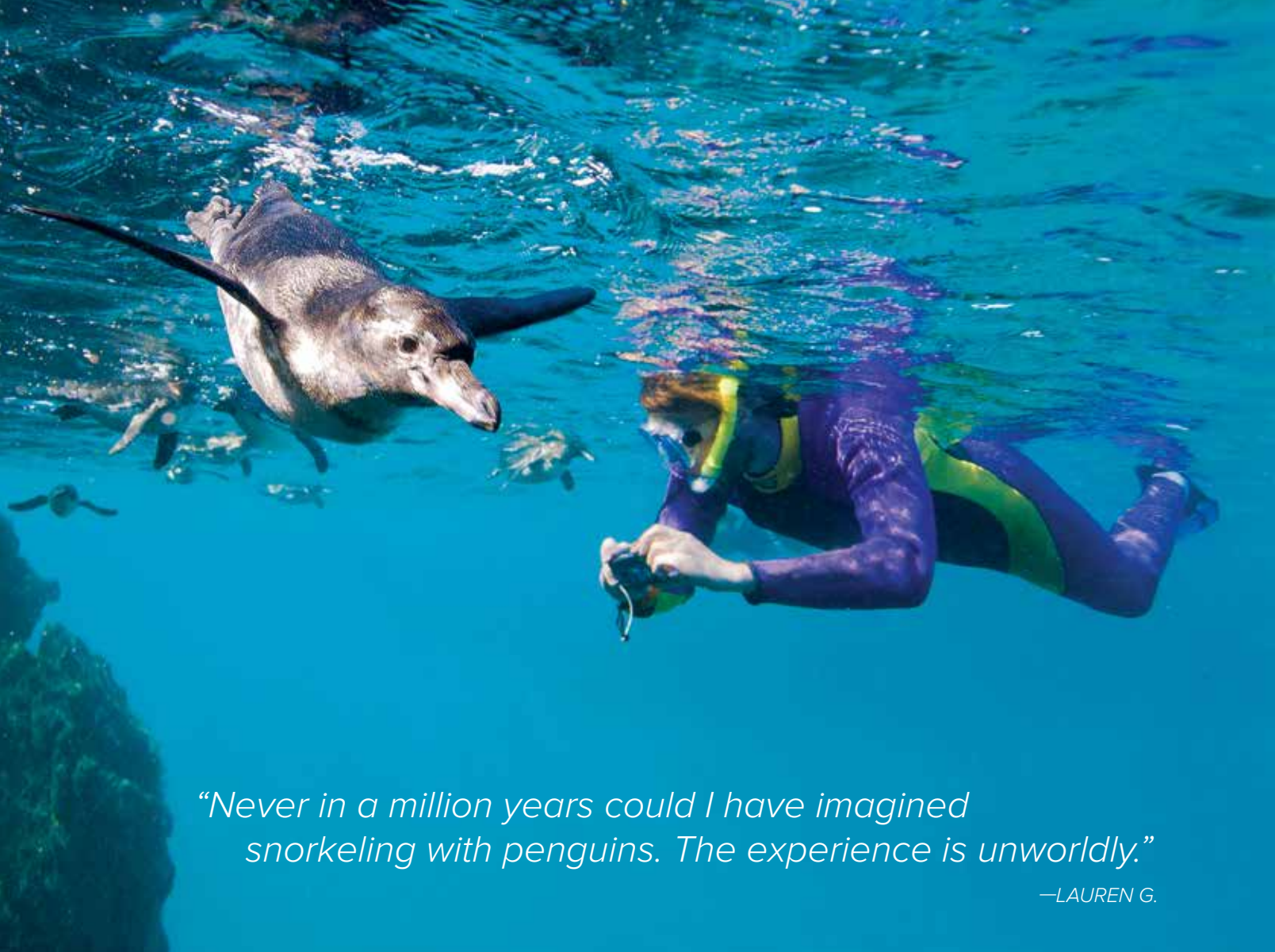
PERU: MACHU PICCHU, CUSCO, LIMA

After Galápagos, why not flip the script and head for a totally cultural, jungle-framed experience and an encounter with the vibrant living cultural lineage. Page 18.

GALÁPAGOS: THE JOY OF CHOICE

There are many aspects to Galápagos and we offer as many ways to enjoy the diversity of its land and undersea environments. Walks, at a photographer's pace or faster. Hikes. Kayaking or paddleboarding. Snorkeling and scuba diving; swimming from a gorgeous wild beach animated by sea lions; or a slow scenic cruise in our glass-bottom boat (on *National Geographic Endeavour II*). Or a hammock and a good book on a canopied deck. You learn about each day's opportunities in advance, so you can plan your day, or be spontaneous. And you'll experience the pleasures of our hallmark 'Recap'—where reliving the day's events is almost as much fun as doing them.





“Never in a million years could I have imagined snorkeling with penguins. The experience is unworldly.”

—LAUREN G.



A multi-facted experience of Galápagos (clockwise from upper left): From versatile Zodiac boats; on the beach with sea lions; greeting the sunrise on deck; snorkeling with penguins; landing ashore on a new island every day; and exploring on your own kayak and standup paddleboard.



EXCLUSIVELY OURS: NATIONAL GEOGRAPHIC GLOBAL EXPLORERS



Our program for kids and teens is the only program of its kind in Galápagos travel, giving families a unique way to explore and connect with each other and the natural world. Developed in conjunction with National Geographic Education, it's designed to help kids and teens 18 and younger to develop the attitudes, skills, and knowledge of an explorer. They're invited to engage in a variety of cool activities, guided by a National Geographic certified field educator:

- ✓ **Develop their observation skills** by watching out for specific wildlife, and recording observations in their Field Notebook
- ✓ **Have fun with cool activities** like earning their Zodiac driving 'license'
- ✓ **Connect with nature** in various ways, such as creating a plankton tow and using the Ship's video microscope with their National Geographic certified field educator
- ✓ **Use their creativity** to become good storytellers—with photos, videos, music, writing, drawing and more, to communicate all they'll see and do
- ✓ **Participate in some or all of the activities** based on their interests, and still have plenty of time to share a family adventure.



Charles Darwin kept fourteen field notebooks to record his shore excursions during the voyage of the HMS Beagle. Kids receive their own exclusively developed and designed Field Notebook at the beginning of their Galápagos expedition, to record like Darwin did! Illustrated with photos and facts, the Notebook encourages them to observe what's around them, jot down their stories, and stretch their minds—collecting “points” for activities on their way to becoming a National Geographic Global Explorer. And, it's a lasting personal keepsake of their incredible Galápagos experience.



YOUR TEAM IS ACE AT DOING WHAT IT TAKES



In many respects, Galápagos doesn't exist until you discover it. When you step off our ship, it's as if it's 1835 and you're Charles Darwin, disembarking the *Beagle* to explore the unexplored. But sometimes even the most intrepid of adventurers

need a guide—and that's where we come in. Our team will do whatever it takes to ensure you encounter the extraordinary when it comes to wildlife, history, and enlightened conservation. We'll help you to see, do, and absorb these extraordinary experiences—and we'll do it in comfort, with inspiration, learning, good conversations, and great food included.



▶ LEARN MORE AT [EXPEDITIONS.COM/PHOTO](https://www.expeditions.com/photo)

Clockwise from top: Be welcomed on the bridge whenever you like, a feature of all our expeditions. Captain Eduardo Neira has 30+ years in the islands.; Naturalist Gaby Bohorquez leads a hike on Española Island; naturalist, photographer and author Walter Perez (Galápagos: Life in Motion) examines a starfish with a National Geographic Global Explorer. Opposite: Shoot alongside National Geographic photographers and photo instructors.

EXCLUSIVELY OURS: EXPEDITION PHOTOGRAPHY

Galápagos is one of the most surprising places on the planet, and if you're like most people, you'll be reaching for your camera to capture it all. That's why we have Lindblad-National Geographic certified photo instructors on every departure. They can help you with your camera settings, composition basics, pro tips, and more. And as trained naturalists, they understand the behavior of your animal subjects.



NATIONAL GEOGRAPHIC



The June 2017 issue of National Geographic magazine features a story on Galápagos shot by Thomas Peschak. His extraordinary photographs dramatically depict many of Galápagos' strange and wonderful species—the same animals you'll

see on your expedition—as they face the peril of climate change. Thomas will be traveling aboard National Geographic Endeavour II on two consecutive departures.

Join him on back-to-back voyages, and you'll visit all the

Galápagos islands—more than Darwin did—on one epic adventure, plus save 10% on the two-voyage price.



GALÁPAGOS PHOTO EXPEDITIONS

Travel with a top National Geographic photographer on select departures. Be inspired, pick up pro tips, and practice visual storytelling techniques aboard *National Geographic Endeavour II*.



2018: Jay Dickman, Nov. 23 & 30

2019: Todd Gipstein, Jan. 18 & 25; Jonathan Irish, May 24 & 31; Thomas Peschak, Nov. 29 & Dec. 6

GALÁPAGOS

10 DAYS/9 NIGHTS—ABOARD NATIONAL GEOGRAPHIC ENDEAVOUR II AND NATIONAL GEOGRAPHIC ISLANDER

PRICES FROM: \$6,960 to \$16,670 (See pages 23 and 27 for complete prices.)

Book by Dec. 31, 2018 to guarantee 2019 prices for 2020 departures.

It's different in Galápagos, "a little world within itself," as Darwin described it, where magical encounters with animals—curious or sublimely indifferent to our presence—happen like nowhere else. Each island is different, and over 50 years of regularly visiting these islands, we've learned how to provide the optimal balance in terms of terrain and wildlife. When you explore with us, you are assured a remarkable experience.*

EXPEDITION HIGHLIGHTS

- ▶ Our classic immersive exploration, with a full week in Galápagos.
- ▶ Walk among wildlife unfazed by your presence.
- ▶ Snorkel with sea lions, turtles and abundant fish.
- ▶ Adventure by kayak, paddleboard, glass-bottom boat (*Endeavour II*) and Zodiac.
- ▶ Observe giant Galápagos tortoises in the wild.
- ▶ Add a pre-voyage extension to Mashpi and Quito, or continue to iconic Machu Picchu or the Amazon for even more. Visit expeditions.com.

EXPERIENCE & EXPERTISE



We're celebrating 50 years of exploring Galápagos. We've introduced generations of travelers to its magic and mystery. We're committed to Galápagos; and have raised millions, along with our guests, for its conservation. And we're fully invested, too; we operate two ships based there year round. An expedition leader, our team of naturalists, a Lindblad-National Geographic certified photo instructor, undersea specialist, wellness specialist, and video chronicler all contribute to your experience of the wonders of Galápagos.

Visit our website to read staff bios.



Up-close encounter with sea lions.

DAY 1: DEPART U.S./GUAYAQUIL, ECUADOR

Upon arrival in Guayaquil, transfer to the Hotel del Parque (*National Geographic Islander*) or Hotel Hilton Colón (*National Geographic Endeavour II*). Ask your Expedition Specialist about extra nights.

DAY 2: GUAYAQUIL/GALÁPAGOS

This morning, fly to the Galápagos Islands and board *Islander* or *Endeavour II*. After lunch, we begin our exploration of the islands and their remarkable wildlife. (B,L,D)

DAYS 3–8: EXPLORING THE GALÁPAGOS

Listed below is a sample of islands we may visit during our expedition.* (B,L,D Daily)

NORTH SEYMOUR: Follow coastal trails past playful Galápagos sea lions on this wildlife-rich central island. Continue inland through a silvery forest of endemic palo santo trees, where frigatebirds nest, blue-footed boobies dance, and where we may also encounter prehistoric-looking land iguanas feeding on cactus.

ISABELA: Cross the Equator at Volcán Ecuador, northernmost of Isabela’s six great shield volcanoes. Keep an eye open for whales and dolphins, sea turtles and the elusive ocean sunfish. Over two days, land in the footsteps of Darwin and Melville, and look for wildlife along the wildly eroded volcanic shore.

FERNANDINA: One of the most active oceanic volcanoes in the world, Fernandina is the youngest and most pristine island in Galápagos—and home to the strange flightless cormorant, Galápagos penguins and the largest marine iguanas. Hikes ashore lead across impressive recent lava flows.

ESPAÑOLA: See swallow-tailed gulls, Española mockingbirds, Nazca boobies and, seasonally, the world’s only population of waved albatross at this birdy paradise, also home to vividly colored marine iguanas. Watch sea lions on the wide sand beach, and snorkel offshore, at Gardner Bay.

FLOREANA: Follow a trail past a rose pink-tinted lagoon frequented by flamingos. Snorkel among sea lions and abundant fish, or cruise along Champion Islet by Zodiac. Visit the famous barrel at Post Office Bay.

SANTA CRUZ: Visit Puerto Ayora, the largest town and headquarters of both the Galápagos National Park and Charles Darwin Research Station. See the monument to Lonesome George, and tour the giant tortoise breeding corrals. See the giant tortoises roaming in the wild in the lush, green highlands.

BARTOLOMÉ: Climb the steps to the summit of this 300-foot volcanic wonderland for stunning views. Explore, swim and snorkel from the beach. You might even see Galápagos penguins, one of world’s rarest.

SANTIAGO: Explore tide pools and look for fur seals sheltered in quiet grottos of black basalt. Swim, snorkel, kayak and paddleboard along Santiago’s spectacular coast, and explore an enchanting coastal forest where Charles Darwin once walked.

GENOVESA: Sail across the Equator to the remote northern realm of the Galápagos, surrounded by warmer tropical waters.

SAN CRISTOBAL: Search for red-footed boobies and the endemic mockingbird and lava lizard—found only on this easternmost island, and dig your toes into the powdery white sand at a gorgeous beach fronted by iconic Kicker Rock. Explore Baquerizo Moreno, where sea lions thrive in the middle of town.

DAY 9: GALÁPAGOS/DISEMBARK/ GUAYAQUIL

Return this morning to Guayaquil, where we transfer to our hotel. Overnight Hotel del Parque (*Islander*) or Hotel Hilton Colón (*Endeavour II*) (B)

DAY 10: GUAYAQUIL/DEPART

Transfer to the airport for flights home. (B)

**Please Note: Our in-depth expeditions sail between Isla San Cristóbal and Isla Baltra, and include Isla Santa Cruz and a careful selection of islands and visitor sites. All ship itineraries are subject to Galápagos National Park regulations, including that no single site can be visited by the same ship more than once in a two-week period. In fact, you could join for two weeks and see all the sites. Please be assured that there is no better week to experience Galápagos—just nuances from one week to the other.*



EXPEDITION DETAILS

DATES: 2018-20: Ten-day expeditions, departing Fridays on *National Geographic Endeavour II* and Saturdays on *National Geographic Islander*.

SPECIAL OFFERS:

- Book by **Dec. 31, 2018** on select 2018 and 2019 departures for **FREE AIRFARE** between Miami and Galápagos. See page 28.
- Book by **Dec. 31, 2018** on select July and August 2019 Galápagos departures and take **\$1,000 OFF KIDS UNDER 18**. See page 28.
- Starting Jan. 2019, your bar tab and Wifi are complimentary on all departures. See page 28 or call for details.

OPTIONAL EXTENSIONS

Add a six-day pre-voyage extension, featuring **Quito** and **Mashpi Lodge**, a National Geographic Unique Lodge of the World in one of the world’s biodiversity hotspots. See page 17 for details or visit expeditions.com/Mashpi.



COMBINE YOUR ADVENTURE

With **Machu Picchu & Peru’s Land of the Inca**, the **Upper Amazon** aboard *Delfin II* or even all three, making the most of your time in the region. See pages 18-19 for details.

NATIONAL GEOGRAPHIC PHOTOGRAPHERS

Travel with **Jay Dickman** (Nov. 23 & 30, 2018), **Todd Gipstein** (Jan 18 & 25, 2019), **Jonathan Irish** (May 24 & 31, 2019), **Tom Peschak** (Nov. 29 & Dec. 6, 2019) aboard *National Geographic Endeavour II*.

NEW

WILD GALÁPAGOS ESCAPE

7 DAYS/6 NIGHTS—ABOARD NATIONAL GEOGRAPHIC ISLANDER

PRICES FROM: \$5,450 to \$9,520 (See page 23 for complete prices.)

Book by Dec. 31, 2018 to guarantee 2019 prices for 2020 departures.

Pack a ton of adventure into one action-packed week, available only aboard the 24-cabin *National Geographic Islander*.

With multiple adventures each day on land and undersea—including options for walks and hikes, kayaking, paddleboarding and snorkeling—you'll be assured of the full Lindblad-National Geographic Galápagos experience. Each voyage is crafted to offer you a diverse experience of the archipelago.

EXPEDITION HIGHLIGHTS

- ▶ Explore it all in less time.
- ▶ Maximize your experience with options every day.
- ▶ Walk among colonies of wildlife and seabirds unfazed by your presence.
- ▶ Snorkel and kayak in rich waters among shimmering fish, sea turtles, penguins, and playful sea lions.
- ▶ Add a two-night post-expedition extension to Quito and Otavalo in the Andes of Ecuador. Visit expeditions.com/quito for details.

EXPERIENCE & EXPERTISE



We're celebrating 50 years of exploring Galápagos. We've introduced generations of travelers to its magic and mystery. We're committed

to Galápagos; and have raised millions, along with our guests, for its conservation. And we're fully invested, too; we operate two ships based there year round. An expedition leader, our team of naturalists, a Lindblad-National Geographic certified photo instructor, undersea specialist, wellness specialist, and video chronicler all contribute to your experience of the wonders of Galápagos.

Visit our website to read staff bios.

Blue-footed boobies.

DAY 1: DEPART U.S./GUAYAQUIL, ECUADOR

Arrive in Guayaquil and transfer to the 44-room Hotel del Parque, a tranquil haven set in a restored 19th-century building. Call for recommended international flights, or additional nights at the hotel.

DAY 2: GUAYAQUIL/GALÁPAGOS/ EMBARK

Fly to Baltra in the center of Galápagos, a little world unto itself in the Tropical Pacific. We are welcomed by our naturalist staff and start exploring the islands. (B,L,D)

DAYS 3-6: GALÁPAGOS

Listed below is a sample of islands we may visit during our expedition.* (B,L,D Daily)



Frigatebird.

NORTH SEYMOUR: Follow coastal trails past playful Galápagos sea lions on this wildlife-rich central island. Continue inland through a silvery forest of endemic palo santo trees, where frigatebirds nest, blue-footed boobies dance, and where we may also encounter prehistoric-looking land iguanas feeding on cactus.

SANTA CRUZ: Visit Puerto Ayora, the largest town and headquarters of both the Galápagos National Park and Charles Darwin Research Station. See the monument to Lonesome George, and tour the giant tortoise breeding corral. See the giant tortoises roaming in the wild in the lush, green highlands.



Encounter sea lions up close.

ISABELA: Cross the Equator at Volcán Ecuador, northernmost of Isabela's six great shield volcanoes. Keep an eye open for whales and dolphins, sea turtles and the elusive ocean sunfish. Over two days, land in the footsteps of Darwin and Melville, and look for wildlife along the wildly eroded volcanic shore.

FERNANDINA: One of the most active oceanic volcanoes in the world, Fernandina is the youngest and most pristine island in Galápagos—and home to the strange flightless cormorant, Galápagos penguins and the largest marine iguanas. Hikes ashore lead across impressive recent lava flows.

SAN CRISTOBAL: Search for red-footed boobies and the endemic mockingbird and lava lizard—found only on this easternmost island, and dig your toes into the powdery white sand at a gorgeous beach fronted by iconic Kicker Rock. Explore Baquerizo Moreno, where sea lions thrive in the middle of town.

ESPAÑOLA: See swallow-tailed gulls, Española mockingbirds, Nazca boobies and, seasonally, the world's only population of waved albatross at this birdy paradise, also home to vividly colored marine iguanas. Watch sea lions on the wide sand beach, and snorkel offshore, at Gardner Bay.

FLOREANA: Follow a trail past a rose pink-tinted lagoon frequented by flamingos. Snorkel among sea lions and abundant fish, or cruise along Champion Islet by Zodiac. Visit the famous barrel at Post Office Bay.

DAY 7: DISEMBARK/BALTRA/ GUAYAQUIL/DEPART
Return by air to Guayaquil, where dayrooms are reserved for us at the Hotel del Parque before late flights home—or elect to spend the night at no additional cost. You may also continue to Quito for an optional two-night extension. Ask your Expedition Specialist for details. (B)

**Please note: Our expeditions begin and end at Baltra, and include visits to Isla Santa Cruz and a careful selection of diverse islands. Each of our itineraries offers an optimal balance of wildlife, landscapes and experiences. All ship itineraries are subject to Galápagos National Park regulations.*



EXPEDITION DETAILS

Departing Thursdays and Saturdays

DATES: 2018: Nov. 24, 29; **2019** Apr. 27; May 2, 11, 16; Aug. 31; Sep. 5, 14, 19; Oct. 31
2020 Feb. 1, 6; May 9, 14, 23; 28; Jul. 18, 23; Aug. 29; Sep. 3; Nov. 7, 12, 21, 26

SPECIAL OFFERS:

- Celebrate these new itineraries with **FREE AIRFARE** between Ecuador and Galápagos. Call for details.
- Starting Jan. 2019, your bar tab and Wifi are complimentary on all departures. See page 28 or call for details.

NATIONAL GEOGRAPHIC EXPERT

Join **Sylvia Earle**, hero of the ocean, marine biologist and National Geographic Explorer (Nov. 24 & 29, 2018). **Learn more at expeditions.com/experts.**



OPTIONAL EXTENSION

Add a two-day post-voyage extension to UNESCO-designated **Quito & famous Otavalo market**. Visit expeditions.com/Quito for details.



Tortoise photo op.

NEW

WILD GALÁPAGOS & PERU ESCAPE

9 DAYS/8 NIGHTS—ABOARD NATIONAL GEOGRAPHIC ISLANDER

PRICES FROM: \$6,250 to \$10,030 (See page 23 for complete prices.)

Book by Dec. 31, 2018 to guarantee 2019 prices for 2020 departures.

Experience the best of Galápagos, and Machu Picchu too, in nine unforgettable days, available only aboard the 24-cabin *National Geographic Islander*. Start in Lima, spend three days in the Sacred Valley, enjoy fabled Machu Picchu and see Cusco, imperial capital of the Inca. Then journey to Galápagos to actively explore diverse islands each day both on land and undersea.

EXPEDITION HIGHLIGHTS

- ▶ Discover two iconic wonders at once.
- ▶ Spend a quiet afternoon and sunset at fabled Machu Picchu.
- ▶ Voyage to Galápagos aboard the 48-guest *National Geographic Islander*.
- ▶ Maximize your time with options to hike, snorkel paddleboard, kayak and paddleboard.
- ▶ Arrive early in Lima or stay on in Ecuador after.

EXPERIENCE & EXPERTISE



For the 30 years we've been exploring here, we've highlighted how Inca cultural heritage influences contemporary life in Peru.

This expedition has been developed with the insight and depth we've obtained from decades in the region. You can be assured that the exhaustive attention to detail that goes into all our ship-based expeditions has gone into planning this exhilarating land journey. Your Peruvian expedition team will be of the same caliber as those on our ships. And your accommodations have been carefully chosen for their location, ambiance, and comfort.

Machu Picchu.

DAY 1: DEPART U.S./LIMA, PERU

Arrive in Lima, Peru's thriving capital, and transfer to the convenient Lima Airport Holiday Inn. You may also opt to arrive a day or two early. Please ask an expedition specialist for details.

DAY 2: LIMA/CUSCO/SACRED VALLEY

Fly to Cusco, where we have lunch in the Colonial center before continuing by coach through the fabled and fertile Urubamba Valley to Tambo del Inka, where we stay two nights. National Geographic grantee Nilda Callañaupa, founder of the Centro de Textiles Tradicionales del Cusco, joins us to demonstrate Inca weaving traditions. Dinner tonight is at the hotel. (B,L,D)

DAY 3: MACHU PICCHU

Drive to Ollantaytambo, where massive stone walls stand sentry over a thriving Inca village. Board the train to Machu Picchu—the Inca royal retreat introduced to the world by Hiram Bingham in the April 1913 issue of *National Geographic* magazine. Set at under 8,000 feet in the “eyebrow of the jungle,” the sanctuary is set in tropical forest with diverse birds and orchids. We linger into the afternoon after day-visitors are gone. Dinner is served aboard the First-Class train on our way back to our hotel. (B,L,D)

DAY 4: SACRED VALLEY/GUAYAQUIL, ECUADOR

Bid farewell to Peru and continue to Ecuador for Part Two of our expedition. Fly from Cusco via Lima to Guayaquil, Ecuador's largest city. Overnight at Hotel del Parque, set in a historic park. (B,L,D)

DAY 5: GUAYAQUIL/GALÁPAGOS

Fly to Baltra at the center of the islands, where we are met by our expert naturalist staff. Start exploring on Isla Santa Cruz with a trip over the highlands of Santa Cruz. Search for wild giant tortoises. Board *National Geographic Islander* this afternoon in Puerto Ayora, largest town and home to both the Galápagos National Park and Charles Darwin Station.

DAYS 6-8: EXPLORING THE GALÁPAGOS

Each day we join our naturalists on interpretive walks, swim, snorkel, or explore by kayak

or Zodiac—all the while witnessing incredible interactions between animals in their natural habitat.

We search for penguins on stark black lava at Sullivan Bay on **Santiago**, swim in a secluded cove on **Santa Fe**, snorkel in crystal-clear water at **Sombrero Chino**, sail across the Equator into the flooded caldera at **Genovesa**, a seabird paradise, or wander among sea lions and land iguanas on **Plaza Sur**. (B,L,D)

DAY 9: DISEMBARK/BALTRA/ GUAYAQUIL/DEPART

Fly from Baltra to Guayaquil, where we relax at dayrooms at the Hotel del Parque before a late flight. You may instead continue to Quito on a post-voyage extension, or spend the night in Guayaquil at no extra cost (returning home on Day 10). Ask your Expedition Specialist for details. (B)

**Please note: Our expeditions begin and end at Baltra, and include visits to Isla Santa Cruz and a careful selection of diverse islands. Each of our itineraries offers an optimal balance of wildlife, landscapes and experiences. All ship itineraries are subject to Galápagos National Park regulations.*



EXPEDITION DETAILS

Seven-day expeditions departing Saturday.
DATES: 2018: Dec. 1; **2019** May 4, 18; Sep 7, 21; Nov 2; **2020** Feb. 11; May 19; Jun. 2; Jul. 28; Sep. 8; Nov. 17; Dec. 1

SPECIAL OFFERS:

- Celebrate these new itineraries with **FREE AIRFARE** between Ecuador and Galápagos. Call for details.
- Starting in 2019, your bar tab and Wi-Fi are included. See page 28 for details.

OPTIONAL EXTENSION

Add a two-day post-voyage extension to UNESCO-designated **Quito & famous Otavalo market**. Visit expeditions.com/quito for details.



A sally lightfoot crab poses next to a marine iguana.

BEYOND GALÁPAGOS— SEE MORE OF ECUADOR

Discover the biodiversity, cultural richness and colonial splendors of mainland Ecuador. Choose to experience it all, before or after your Galápagos voyage, with extensions and excursions featured opposite.

Mashpi Lodge.

TROPICAL ANDES & COLONIAL QUITO

Immerse yourself in nature at its most brilliant at Mashpi Lodge, a National Geographic Unique Lodge of the World. Set on a 2,600-acre reserve in the heart of the Ecuadorian Chocó—one of the world's top biodiversity hotspots—the lodge is a stunningly contemporary base from which to explore the surrounding forest. From \$2,390. *This is a 6-day pre-voyage extension.* See expeditions.com/mashpi for details.



Mashpi Lodge.

COLONIAL QUITO & OTAVALO



San Francisco Church, Quito.

Find yourself a part of history in Quito, a bustling city with origins dating from the time of the Incas that is today the largest and best-preserved colonial center in all Latin America. Tour historic plazas and churches, spend the day at celebrated Otavalo market, and visit a gracious hacienda and family-owned rose farm. *With most Galápagos flights beginning and ending in this Andean capital, it's simple to add a night or two in Quito with your choice of excursions.* From \$250—the first night in Quito instead of Guayaquil, and the additional flight to Quito is yours, with our compliments. See expeditions.com/ecuador for details.

GUAYAQUIL & HISTORIC HACIENDAS

Soak in the vibrant, coastal energy of Guayaquil, a port city situated on the Guayas River. Stroll the Malecón 2000, a riverside boardwalk and park; take in the tropical elegance of the Parque Histórico and spend the day at a traditional dairy, teak, and cacao farm in cowboy country outside the city. *Arrive before Galápagos to relax and explore, or linger after.* Hotel nights from \$224, Full-Day Hacienda La Danesa experience from \$285. *We'll gladly arrange the extra hotel nights.* See expeditions.com/ecuador for details.



Las Peñas neighborhood, Guayaquil.

GALÁPAGOS + MACHU PICCHU & PERU'S LAND OF THE INCA

16 DAYS/15 NIGHTS—ABOARD NATIONAL GEOGRAPHIC ENDEAVOUR II AND NATIONAL GEOGRAPHIC ISLANDER

PRICES FROM: \$12,650 to \$23,290 (See pages 23 & 27 for complete prices.)

Book by Dec. 31, 2018 to guarantee 2019 prices for 2020 departures.

EXPEDITION HIGHLIGHTS

- ▶ Walk and snorkel among the abundant and fearless wildlife of Galápagos.
- ▶ See daybreak over the ruins at Machu Picchu from the fabled Sun Gate.
- ▶ Discover Cusco's varied influences and visit the Sacred Valley of the Inca.

DAYS 1-8: AS PER GALÁPAGOS ITINERARY ON PAGES 10-11.



Machu Picchu.

DAY 9: GALÁPAGOS/GUAYAQUIL/LIMA, PERU

Upon arrival this evening in Lima, check-in at the conveniently located Wyndham Costa del Sol Lima Airport Hotel.

DAY 10: LIMA/CUSCO/SACRED VALLEY

Board a short scenic flight to Cusco this morning, and continue to Moray—a visually stunning Inca site with dramatic agricultural terraces in the heart of the fabled and fertile Urubamba Valley. After lunch and an opportunity to experience a local market, check-in at Sol y Luna, our base for two nights. This serene Relais & Chateaux hotel offers individual adobe casitas set in a verdant garden. (B,L,D)

DAY 11: SACRED VALLEY

Spend the day exploring the archaeological sites and culture of the Sacred Valley in the company of National Geographic expert Peter Frost, who has lived and worked in Peru for decades. He or a colleague joins us for a talk at our hotel and a visit to the massive Inca stone fortress of Ollantaytambo, set above a thriving

Inca community. Lunch is at a working, family owned hacienda, where we are treated to a show of Peruvian Paso horses, and National Geographic grantee Nilda Callañaupa, founder of El Centro de Textiles Tradicionales de Cusco, demonstrates Inca weaving traditions. (B,L,D)

DAY 12: SACRED VALLEY/MACHU PICCHU

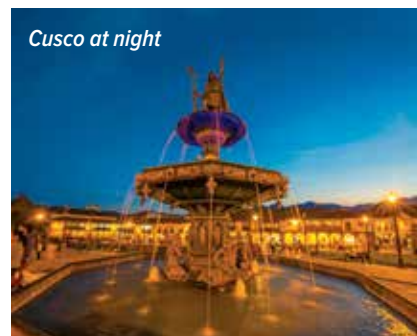
Marvel at the dramatic scenery and life along the river en route this morning by train to Machu Picchu, the Inca royal retreat famously introduced to the world by Hiram Bingham in the April 1913 issue of *National Geographic* magazine. Check-in at the historic 31-room Belmond Sanctuary Lodge, adjacent to the World Heritage site, with the leisure to explore over two days in the company of our handpicked tour director and local guides. Lunch and dinner at the hotel. (B,L,D)

DAY 13: MACHU PICCHU/CUSCO

Awaken this morning at Machu Picchu, where options include an early hike to the Sun Gate, the ancient final checkpoint to Machu Picchu on the Inca Trail. After lunch, return by train and bus to Cusco—the center of the Inca universe and a burgeoning cultural capital. Check-in at the Belmond Hotel Monasterio on Plaza Nazarenas in the heart of Cusco for two nights. Occupying a monastery founded in 1592, our hotel—like much of colonial Cusco—is built atop Inca stones. (B,L,D)

DAY 14: CUSCO

Explore the magnificently ornate 17th-century cathedral, sacred Inca Temple of the Sun,



Cusco at night

and other treasures of Cusco. Visit nearby Sacsayhuamán, where a series of imposing terrace walls, the most impressive yet, command views over the city. Relax, shop, or visit one of Cusco's many churches and museums this afternoon. Dinner is on your own tonight. (B,L)

DAY 15: CUSCO/LIMA

Return to vibrant coastal Lima this morning, where we stroll the Plaza Mayor and delight in a private farewell lunch with a special musical presentation at Casa Aliaga, one of the oldest houses in Lima. After a visit to the extraordinary Larco Museum, dedicated to pre-Columbian art, check-in at Belmond Miraflores Park, set along the fashionable seaside promenade. Dinner is on your own. (B,L)

DAY 16: LIMA/U.S.

After breakfast, transfer to the airport for flights home—or on to Iquitos and Amazon. (B)

EXPEDITION DETAILS

DATES: Year-round, weekly departures following Galápagos aboard *National Geographic Islander* and *National Geographic Endeavour II*. Learn more at expeditions.com/gala

NATIONAL GEOGRAPHIC EXPERT

Gain insight from National Geographic grantee **Peter Frost** or a colleague on our departures.

NEW: WILD GALÁPAGOS & PERU ESCAPE

Experience the best of Galápagos, and Machu Picchu too, in nine action-packed days. Find details on pages 14-15 or at expeditions.com/wildgalaperu.

GALÁPAGOS + UPPER AMAZON

18 DAYS/17 NIGHTS—ABOARD NATIONAL GEOGRAPHIC ENDEAVOUR II AND DELFIN II

PRICES FROM: \$13,950 to \$24,090 (Call for pricing.)

Book by Dec. 31, 2018 to guarantee 2019 prices for 2020 departures.

EXPEDITION HIGHLIGHTS

- ▶ Walk and snorkel among the abundant, iconic Galápagos wildlife that is unfazed by your presence.
- ▶ Hike pristine islands, kayak their peaceful shorelines, and explore the Galápagos undersea.
- ▶ In the Amazon, discover an entirely different kind of biodiversity—macaws, monkeys, sloths, and more, plus meet the *ribereños*—inhabitants of the jungle we explore.

DAYS 1-8: PER GALÁPAGOS ITINERARY ON PAGES 10-11.

DAY 9: GALÁPAGOS /DISEMBARK/ GUAYAQUIL/LIMA, PERU

Depart Galápagos this morning and fly to Lima, Peru via Guayaquil, arriving in the evening. Overnight at the conveniently located Wyndham Costa del Sol Lima Airport Hotel. (B)

DAY 10: LIMA/IQUITOS/NAUTA/ EMBARK

Fly this morning to Iquitos and continue after lunch on the river to Nauta, where Delfin II awaits. Settle into your cabin, and gather for a welcome dinner of fine Peruvian cuisine on board. Tonight, gaze at the magnificent Amazon night sky. (B,L,D)

DAYS 11-16: PACAYA-SAMIRIA NATIONAL RESERVE

Spend this week exploring the Pacaya-Samiria National Reserve, a pristine swath of

jungle—one of the largest in South America—stretching more than five million acres, and harboring some of the Amazon's most fascinating flora and fauna. Bordered by the Marañón and the Ucayali, two powerful rivers that converge to create the famed Amazon, which floods annually with nutrient-rich waters.

Set out into this remarkable wilderness on daily excursions by skiff, kayak, and, when the water level permits, hikes on terra firma. Skim past giant lily pads afloat on black-water lakes, and venture deep into the rain forest on narrow tributaries. Spot sloths and monkeys, including variably colored saddleback tamarins, noisy howlers, and shaggy-tailed monk saki monkeys. Watch for an astounding variety of birds, from tanagers and hummingbirds to parrots and endangered scarlet macaws.

Enjoy an opportunity to swim in a lake in the reserve's interior. Go on a bird-watching hike, listening for the vocal oropendola and then look for its telltale yellow tail. Watch the sun set and listen to a cacophonous symphony of nocturnal animals calling out across the treetops. Then slip through the forest in a skiff as night falls, using a spotlight to find caimans, frogs, fishing bats and other creatures of the night.

One of the unexpected joys of traveling in the upper Amazon of Peru is the interaction we have with the local *ribereños*, the traditional people who live on the riverbanks. Visit one of



A monk saki monkey, perched high in a tree.

the communities and see the projects that we support through a local non-profit, including a variety of handicrafts, women's health initiative and sustainable farming. (B,L,D)

DAY 17: NAUTA/IQUITOS/LIMA

Disembark in Nauta, stopping at the Amazon Rescue Center on the drive to Iquitos. Fly to Lima, where we visit Museo Larco and celebrate with a farewell dinner. Overnight at the Wyndham Costa del Sol Lima Airport Hotel. (B,L,D)

DAY 18: LIMA/U.S.

After breakfast, transfer to the airport for your flight home. (B)

EXPEDITION DETAILS

Year-round departures. Call for dates and pricing.

SPECIAL OFFERS:

- Book by Oct. 31, 2018 on select dates for **FREE ROUND-TRIP** economy group airfare from Miami to Galápagos/Lima to Iquitos (up to \$2,100 value); ask about other U.S. gateways. Upgrade to business class for \$500 to Guayaquil on select dates (space available). See page 28 or call for details.
- Combine a Galápagos expedition with Upper Amazon and save 10%. Call for pricing information.



Amazon rare pink dolphins.



Relaxing on the covered Upper Deck.

LIFE ABOARD NATIONAL GEOGRAPHIC ISLANDER

Our vintage mahogany-and-brass ode to the elegant maritime tradition, *Islander* is as close to a private yacht expedition as you can get, plus you get the benefits of our 50 years of expertise, the caliber of our naturalist team, the warmth of our staff, and the cool tools for exploring with which she is equipped. Accommodating just 48 guests, *National Geographic Islander* inspires a real *esprit de corps*. There's just something about *Islander's* scale, the glow of her patina, her team, and the guests she attracts that's alchemical—it creates something special every single voyage. The attentiveness and graciousness of the staff, cabin service three times daily, the relaxed informality; combined with the pleasures of convening in the Lounge, and entering the Dining Room for each day's fare creates a round of satisfying rituals that foster a real sense of being 'at home.'



Category 5 cabin.



“My wife and I took the one week Galápagos excursion on the Lindblad National Geographic Islander in mid-February. It was a fantastic experience, exceeded our admittedly high expectations and... we can recommend highly.. ”

—Cruise Critic Member Alerion28, sailed February 2017

ISLANDER GUEST EXCLUSIVE: HOTEL DEL PARQUE, GUAYAQUIL



Set in a lovingly restored 19th-century building along the Río Daule, Hotel del Parque is a serene tropical refuge, where the calls of parrots and spider monkeys replace the sounds of a busy port city. Enjoy exclusive after-hours access to the cobble streets, exhibits and lush gardens of Guayaquil's

Parque Histórico. With 44 beautifully appointed rooms, two courtyards, a 19th-century chapel, and an excellent Café facing the river, this exquisite hotel is a perfect golden-age complement to your *Islander* voyage. **New for 2018.**





NATIONAL GEOGRAPHIC ISLANDER

YACHT-SCALED AND TRIM, OFFERING EXPEDITION AMENITIES FOR JUST 48 GUESTS

CAPACITY: 48 guests in 24 outside cabins.

REGISTRY: Ecuador. **OVERALL LENGTH:** 164 feet.

PUBLIC AREAS: Open-air observation deck, second covered outside deck with hammocks, tables and chairs. Lounge and bar accommodating all guests for presentations and gatherings, dining room, library, Mac kiosks and Internet. The captain and officers welcome guests to visit the open bridge.

MEALS: Served in a single, unassigned seating in a sociable, informal atmosphere with Ecuadorian flair.

CABINS: All have a window with an outside view, private facilities, ample storage and climate controls. Bed can be configured as two twins or as a single queen.

EXPEDITION EQUIPMENT: Zodiacs, a fleet of kayaks and paddleboards, snorkel gear and wetsuits for both adults and children, video microscope and underwater video camera.

SPECIAL FEATURES: Shipboard doctor, Lindblad-National Geographic certified photo instructor, video chronicler, snorkel instruction, Wi-Fi access, laundry service, National Geographic Global Explorers family program, Global Gallery.

WELLNESS: LEXSpa and fitness center, exercise classes, and wellness specialist.

Clockwise from top: National Geographic Islander anchors close to shore; Category 1 cabin; Category 4 cabin; spacious and comfortable lounge.





Spacious Dining Room with 270-degree panorama.

CATEGORY 1: Main Deck, Forward #201-206

CATEGORY 2: Main Deck #207-210, Bridge Deck #301, 302

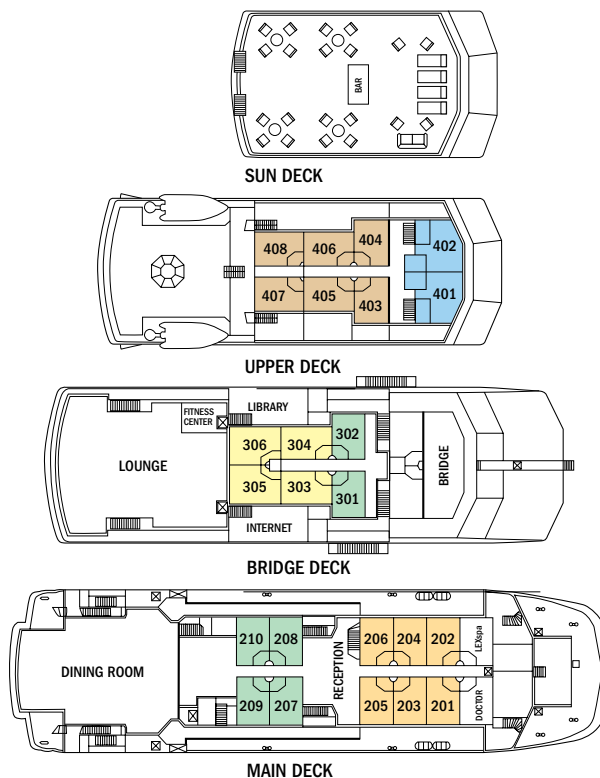
CATEGORY 3: Bridge Deck #303-306. Cabins 305 and 306 can accommodate a third person with sofa bed.

CATEGORY 4: Upper Deck #403-408—with outside, glassed-in terraces with windowed door and seating.

CATEGORY 5: Upper Deck, #401 and 402—forward facing with additional seating, desk, wrap-around windows, glassed-in terrace with seating. Largest cabins aboard.

NOTE: All cabins offer two twin beds that can be converted to a queen. Sole occupancy in categories 1 and 2 only. Third person rates for cabins 305 and 306 are one-half per person double occupancy rate.

SHARED ACCOMMODATIONS: Shares can be arranged at the double occupancy rate in Categories 1 and 2 only.



Prices are per person, double occupancy unless indicated as solo.

ITINERARY		CAT. 1	CAT. 2	CAT. 3	CAT. 4	CAT. 5	CAT. 1 SOLO	CAT. 2 SOLO	ADVANCE PAYMENT	NOTE
Galápagos: Aboard <i>National Geographic Islander</i> – 10 days/9 nights – Pages 10-11										
Departing Saturdays throughout the year	2018	\$7,330	\$8,290	\$9,170	\$9,750	\$11,860	\$10,990	\$12,440	\$750	International and internal Ecuador tickets must be issued separately for all Galápagos voyages. Sample International Airfares: Round-trip Miami/Guayaquil: Economy from \$500; Business from \$1,050. Sample Internal Airfares: Guayaquil/Galápagos: Adult from \$520 Children (Under 12) from \$260. Call for sample Peru airfare.
	2019/2020*	\$7,550	\$8,650	\$9,590	\$10,150	\$12,350	\$11,390	\$12,990	\$750	
Holiday	Dec. 21 & 28, 2019* Dec. 19 & 26, 2020*	\$8,690	\$9,950	\$11,030	\$11,680	\$14,210	\$13,100	\$14,940	\$1,000	
New! Wild Galápagos Escape – 7 days/6 nights – Pages 12-13										
Nov. 24 & 29	2018	\$5,450	\$6,140	\$6,770	\$7,180	\$8,690	\$8,070	\$9,100	\$750	Galápagos flights included. International must be issued separately. Sample international airfares: Round-trip Miami/Guayaquil: Economy \$500.
Apr. 27; May 2, 11, 16; Aug. 31; Sep 5, 14, 19; Oct. 31	2019*	\$5,630	\$6,420	\$7,090	\$7,490	\$9,060	\$8,370	\$9,520	\$750	
Feb. 1, 6; May 9, 14, 23, 28; Jul. 18, 23; Aug. 29; Sep. 3; Nov. 7, 12, 21, 26	2020*	\$5,630	\$6,420	\$7,090	\$7,490	\$9,060	\$8,370	\$9,520	\$750	
New! Wild Galápagos & Peru Escape – 9 days/8 nights – Pages 14-15										
Dec. 1	2018	\$6,250	\$6,800	\$7,300	\$7,630	\$8,840	\$8,780	\$9,600	\$750	Galápagos flights included. International and internal Peru tickets must be issued separately. Sample international airfares: Round-trip Miami/Lima/Guayaquil Economy \$500. Sample Lima/Cusco/Lima plus Lima/Guayaquil from \$935.
May 4, 18; Sep 7, 21; Nov 2	2019*	\$6,470	\$7,100	\$7,630	\$7,950	\$9,210	\$9,110	\$10,030	\$750	
Feb. 11; May 19; Jun. 2; Jul. 28; Sep. 8; Nov. 17; Dec. 1	2020*	\$6,470	\$7,100	\$7,630	\$7,950	\$9,210	\$9,110	\$10,030	\$750	
Galápagos + Machu Picchu & The Land of the Inca – 16 days/15 nights – Page 18										
Departing Saturdays throughout the year	2018	\$13,020	\$13,980	\$14,860	\$15,440	\$17,550	\$18,060	\$19,510	\$1,500	International and internal Ecuador tickets must be issued separately for all Galápagos voyages. Sample International Airfares: Round-trip Miami/Guayaquil: Economy from \$500; Business from \$1,050. Sample Internal Airfares: Guayaquil/Galápagos: Adult from \$520 Children (Under 12) from \$260. Call for sample Peru airfare.
	2019/2020*	\$13,440	\$14,540	\$15,480	\$16,040	\$18,240	\$18,680	\$20,280	\$1,500	
Holiday	Dec. 14, 2019*	\$14,170	\$15,270	\$16,210	\$16,770	\$18,970	\$19,210	\$20,810	\$1,500	
	Dec. 28, 2019*	\$14,580	\$15,840	\$16,920	\$17,570	\$20,100	\$20,390	\$22,230	\$1,500	

*Price valid through Dec. 31, 2018. After Dec. 31, 2018, call or visit expeditions.com for new 2019 and 2020 prices.



National Geographic Endeavour II, Cabin 420 Suite B.
One of two cabins with floor-to-ceiling windows.

LIFE ABOARD NATIONAL GEOGRAPHIC ENDEAVOUR II



Dining Room.

Completely refitted, christened and launched in Galápagos in 2017, the new *National Geographic Endeavour II* is a floating basecamp for exploring the islands. Originally built to carry 136 passengers, she now accommodates just 96 guests in 52 thoughtfully appointed cabins, including dedicated solo cabins, connecting cabins and suites. Designed and equipped with the benefit of our 50 years in Galápagos, she is the perfect platform for exploring these islands, with a fleet of Zodiacs, kayaks, and stand-up paddleboards for personal forays. With her spacious marina platform, she ensures

swift deployment of all guests aboard—to get you out there on daily adventures. And *Endeavour II* also carries a glass-bottom boat, granting everyone not inclined to the daily snorkeling options, a window on the undersea, with a naturalist at the helm to illuminate the vivid life there.



Heading ashore at first light.

ENDEAVOUR II EXCLUSIVE: + THE UPPER AMAZON

Fall under the spell of the Amazon and discover the pulse and flow of the world's mightiest river, by seamlessly linking your Galápagos *Endeavour II* voyage to an Upper Amazon expedition aboard the lovely *Delfin II*. Fly free round-trip from Miami on select dates; and save 10% by combining two expeditions.



Delfin II.

Squirrel monkeys in Peru's Pacaya-Samiria National Reserve, where you spend a full week.





NATIONAL GEOGRAPHIC ENDEAVOUR II

OUR NEWEST SHIP IN GALÁPAGOS,
OFFERING EXPEDITION AMENITIES FOR 96 GUESTS

CAPACITY: 96 guests in 52 outside cabins.

REGISTRY: Ecuador. **OVERALL LENGTH:** 236 feet.

PUBLIC AREAS: Forward lounge and bar accommodating all guests for presentations and gatherings, restaurant, large library with Mac kiosks, open-air observation deck, underwater gear area and dual Zodiac boarding platform, and open bridge, where guests can meet the captain and officers and learn about navigation.

MEALS: Served in a single, unassigned seating in a sociable, informal atmosphere with Ecuadorian flair.

CABINS: All face outside with large windows, and feature twin beds that convert to a queen. With private facilities and climate control, nightstands, desk, and storage. Seven sets of cabins with a connecting door.

EXPEDITION EQUIPMENT: Zodiacs, glass-bottom boat, kayaks and paddleboards, snorkel gear and wetsuits for both adults and children, video microscope and underwater video camera.

SPECIAL FEATURES: Lindblad-National Geographic certified

photo instructor, shipboard doctor, video chronicler, National Geographic Global Explorers family program, snorkel instruction, Wi-Fi access, laundry service, Global Gallery.

WELLNESS: LEXSpa and fitness center, exercise classes, and wellness specialist.

Clockwise from top: National Geographic Endeavour II, launched in December 2016, features 52 cabins accommodating 96 guests; gym; Suite C, largest on the ship; twin bed cabin.



CATEGORY 1: Upper Deck, Forward #201, 202
CATEGORY 2: Upper Deck #211, 213-219, 221, 222, 224-229
CATEGORY 3: Lounge Deck #311, 313-319, 321, 322, 324, 326, 328, 330

CATEGORY 4: Bridge Deck #409, 411-414, 416, 418

SUITE A: Lounge Deck, Mid-Ship #320—with two windows, larger bath, arm chair. Connecting door to #322.

SUITE B: Bridge Deck, Mid-Ship #420, 422—with two floor-to-ceiling windows, larger bath, convertible sofa for a third person.

SUITE C: Bridge Deck, Mid-Ship #415—with two large windows, larger bath, separate sitting area with convertible sofa for a third person and arm chairs, largest cabin on ship.

CATEGORY 2 SOLO: Upper Deck #203-209.

CATEGORY 3 SOLO: Lounge Deck #325, 327.

NOTE: All cabins feature the option of two twins or a queen bed, plus large window(s), desk, chair, and closet.

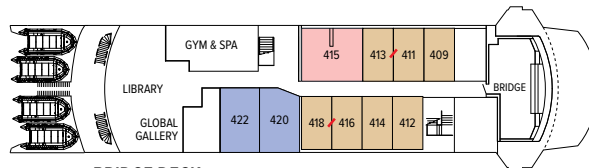
CONNECTING CABINS: #226/228, 227/229, 315/317, 316/318, 320/322, 411/413, 416/418

TRIPLE OCCUPANCY: #224, 225, 326, 328 with fold-down upper third bunk, Suites B and C with convertible sofa bed. Third person rates are one-half per person double occupancy rate.

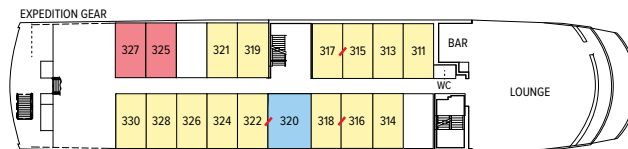
SHARED ACCOMMODATIONS: Shares can be arranged at the double occupancy rate in Categories 1 and 2.



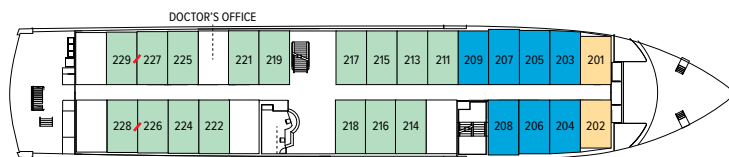
OBSERVATION DECK



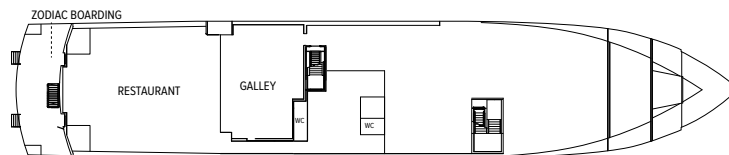
BRIDGE DECK



LOUNGE DECK



UPPER DECK



MAIN DECK

↗ indicates adjoining cabins

Prices are per person, double occupancy unless indicated as solo.

ITINERARY		CAT. 1	CAT. 2	CAT. 3	CAT. 4	SUITE A	SUITE B	SUITE C	CAT. 2 SOLO	CAT. 3 SOLO	ADVANCE PAYMENT	NOTE	
Galápagos: Aboard <i>National Geographic Endeavour II</i> – 10 days/9 nights – Pages 10-11													
Departing Fridays throughout the year	2018	\$6,960	\$8,100	\$8,990	\$9,970	\$11,950	\$12,890	\$13,660	\$10,130	\$11,240	\$750	International and internal Ecuador tickets must be issued separately for all Galápagos voyages. Sample International Airfares: Round-trip Miami/Guayaquil: Economy from \$500; Business from \$1,050. Sample Internal Airfares: Guayaquil/Galápagos: Adult from \$520; children under 12 from \$260. Call for sample Peru airfare.	
	2019/2020*	\$7,190	\$8,450	\$9,450	\$10,590	\$12,690	\$13,690	\$14,490	\$10,690	\$11,880	\$750		
Holiday	Dec. 20 & 27, 2019* Dec. 18 & 25, 2020*	\$8,270	\$9,720	\$10,870	\$12,180	\$14,600	\$15,750	\$16,670	\$12,300	\$13,670	\$1,000		
Galápagos + Machu Picchu & The Land of the Inca – 16 days/15 nights – Page 18													
Departing Fridays throughout the year	2018	\$12,650	\$13,790	\$14,680	\$15,660	\$17,640	\$18,580	\$19,350	\$17,200	\$18,310	\$1,500		
	2019/2020*	\$13,080	\$14,340	\$15,340	\$16,480	\$18,580	\$19,580	\$20,380	\$17,980	\$19,170	\$1,500		
Holiday	Dec. 20, 2019*	\$14,890	\$16,340	\$17,490	\$18,800	\$21,220	\$22,370	\$23,290	\$20,320	\$21,690	\$1,500		
Galápagos + Upper Amazon - 18 days/17 nights - Page 19 (Please call for dates and rates)													

*Price valid through Dec. 31, 2018. After Dec. 31, 2018, call or visit expeditions.com for new 2019 and 2020 prices.

TAKE ADVANTAGE OF OUR SPECIAL OFFERS

BOOK BY DECEMBER 31, 2018 FOR FREE ROUND-TRIP AIR

from Miami on select departures. Or, take advantage of new \$199 and \$299 zone fares from 8 cities on select departures, starting July 2019. Offer on American Airlines only, economy class. Upgrade to Business Class on Miami/Ecuador flights for \$500, subject to availability. Free air offer includes internal flights between mainland Ecuador and Galápagos. All offers are valid for new bookings only, must be ticketed by Lindblad Expeditions and are subject to availability at time of booking. In the case that offered Miami flights are no longer available, Lindblad reserves the right to issue a credit.

MAKE THE MOST OF YOUR TIME IN THE REGION AND SAVE

Book by Oct. 31, 2018 and combine your Galápagos expedition with either a voyage to the Upper Amazon (page 19) or a trip to Machu Picchu & Peru's Land of the Inca (page 18) and receive FREE ROUND-TRIP AIR from Miami on select departures, including domestic air in Ecuador and Peru. SAVE 10% when you combine your Galápagos voyage or Peru expedition with an Upper Amazon voyage.

TAKE THE KIDS & SAVE \$500 Share the wonder of Galápagos with kids under 18 and take \$500 off the double occupancy rate per kid. Our connecting cabins, triples and suites book quickly, so act fast. **Book by Dec. 31, 2018 to double the offer, \$1,000 savings on select July and August 2019 Galápagos departures.**

BRING FAMILY OR FRIENDS Like to explore with like-minded others, or want to bring the whole clan? SAVE 5% when traveling as a group of 8 or more—whether it's your friends, book club, member organization, or extended family. Private charters are also available. Call an Expedition Specialist for details.

BAR TAB AND WIFI INCLUDED Travel aboard any 2019/20 *National Geographic Islander* or *National Geographic Endeavour II* voyage and we will cover your bar tab. Complimentary bar offer excludes certain premium brands of alcohol. Free WiFi, up to one hour a day per person aboard any 2019/20 *National Geographic Islander* and *National Geographic Endeavour II* departure. Visit our website or call for details.

COMBINE OFFERS: Certain offers may be combinable, up to two savings opportunities except where noted otherwise. For example, travel with a group of 8 or more on back-to-back expeditions, and take advantage of both savings!

ASHORE

- ✓ Meals on land, as indicated in itinerary
- ✓ Special access permits, park fees, transit card, port taxes
- ✓ Round-trip airport to hotel transfers for group flights
- ✓ Train ticket, entrance fees, tour leader, guides, portage, tips as indicated (Wild Galápagos & Peru Escape, Machu Picchu & Peru's Land of the Inca)
- ✓ Hotel accommodations at the Hotel del Parque or the Hilton Colon as indicated
- ✓ The knowledgeable guidance and company of our ground staff

ABOARD SHIP

- ✓ All meals—from breakfast, lunch & dinner in the dining room, to outdoor BBQs, hors d'oeuvres and snacks during daily recap, tea-time cookies and all-day fruit
- ✓ All non-alcoholic beverages including unlimited cappuccinos, latte, coffee, tea & soda
- ✓ Complimentary refillable water bottle
- ✓ WiFi and alcoholic beverages (excluding certain premium brands) aboard 2019 voyages
- ✓ Access to navigational bridge
- ✓ Stretching class with wellness specialist
- ✓ Fitness Center with elliptical, treadmill, stationary bicycle, free weights, bands & more
- ✓ Services of an onboard doctor
- ✓ Mac computers for downloading your camera's memory card

ACTIVITIES

- ✓ All shore activities
- ✓ All expedition tools—including Zodiac, kayak, paddleboard, and snorkeling explorations
- ✓ Complete snorkeling gear (wetsuit, mask, snorkel, fins)
- ✓ Lectures, presentations, daily recaps and briefings in the lounge

LINDBLAD AIR TAKES YOU THERE

NEW! FROM FREE TO LOW AIRFARE—YOUR CHOICE

ROUNDTRIP GALÁPAGOS:

From Miami	Free
From New York, Philadelphia, Washington D.C.	\$199
From Chicago, Phoenix, Dallas, Los Angeles, San Francisco	\$299

Ask about Business Class upgrades from \$500.
See air offer opposite for details.

Use our convenient air service whether you simply flying roundtrip to and from Galápagos or extending your time in the region (see page 17 for intriguing options). We'll handle your flights whether you're connecting to the group flight in Miami or traveling on your own from your gateway city. Our dedicated air team will make getting to Galápagos seamless for you.

**JUST
ANNOUNCED—
HOME TOWN AIR!**

Enjoy savings from
key gateway cities on
American Airlines.



RESERVATION INFORMATION

Terms & Conditions: For complete terms and conditions please visit www.expeditions.com/terms

Costs Include: All accommodations aboard ships or in hotels per itinerary or similar, all meals and nonalcoholic beverages aboard ship, alcoholic beverages excluding certain premium brands starting in 2019, meals on land as indicated, WiFi (starting in 2019), air transportation where indicated as included, shore excursions, sightseeing and entrance fees, special access permits, transfers to and from group flights, use of snorkeling equipment and wet suits, use of kayaks and stand-up paddleboards, tips (except to ship's crew), taxes and service charges, services of a ship physician and services of our expedition staff.

Not Included: Air transportation (except where shown as included), extensions, optional Scuba excursions, passport, visa, immigration fees, meals not indicated, travel protection plan, items of personal nature, such as alcoholic beverages and WiFi (on 2018 voyages), voyage DVD, laundry. Gratuities to ship's crew are at your discretion.

Airfare: For all programs, airfare is an additional cost unless otherwise noted. We will gladly assist in making your air arrangements for a \$50 per person service fee.

Reservations: To reserve your place, an advance payment is required at the time of reservation. The per-person advance payment amount is: \$2,500 for the 20-day voyage.

Travel Protection Plan: We strongly recommend that you take advantage of our Travel Protection Plan. This plan offers comprehensive coverage to protect you from cancellation fees, costs incurred due to trip delays/interruption, medical assistance, and damaged or lost baggage, and provides medical assistance and evacuation during your travels. Our Travel Protection Plan is available for U.S. and Canadian residents only, and may be purchased any time prior to final payment due date. Travel Protection premiums are non-refundable once plan is purchased.

Responsibility and Other Terms & Conditions: Certain provisions concerning, among other things, limitations of Lindblad Expeditions' and the National Geographic Society's liability for loss of property, injury, illness or death during the voyage will be provided to all guests on the ship's ticket sent prior to departure, and are also available on our website at www.expeditions.com/terms, or upon request. By registering for a trip, the guest agrees to all such

terms and conditions.

Note: Itineraries and prices listed in this brochure are valid as of publication date, and are subject to change. Under normal conditions, the total expedition cost is guaranteed at the time of booking. However, the published price is determined far in advance of initial departure on the basis of then-existing projections of fuel and other costs. In the event we determine that current costs create an unsustainable financial model, including but not limited to increases in the price of fuel, currency fluctuations, increases in government taxes or levies, or increased security costs, we reserve the right to pass on these costs to you, to cover such unexpected increases. We will always provide a transparent accounting of the reason for such an increase in costs.

Cancellation Policy: Cancellation penalties may apply after payment is received. Please visit www.expeditions.com/terms for complete cancellation policies.

Unused services or items included in our programs are non-refundable

©2018 Lindblad Expeditions

Lindblad Expeditions and the Eye are the trademarks of Lindblad Expeditions. All rights reserved.

NATIONAL GEOGRAPHIC and the Yellow Border are the trademarks of the National Geographic Society. All rights reserved.

Photo Credits: Jonathan Aguas, Alamy, Stewart Cohen, Jennifer Davidson, Jay Dickman, Ralph Lee Hopkins, istock, Sven-Olof Lindblad, Emily Mount, Michael S. Nolan, Stefanie Payne, Alessandro Pinto/ Alamy, R. Aaron Raymond, Rich Reid, Marco Ricca, Jacob Riglin/Beautiful Destinations, Andy Rouse/ Alamy, Alex Rowbotham/Alamy, Shutterstock, Jorge Vinueza G., Matthew Williams-Ellis, David Vargas.

For Reservations:

Contact your travel advisor or Lindblad Expeditions
1.800.EXPEDITION (1.800.397.3348)

Reservation Hours: Monday – Friday 9am – 8pm ET
Saturday & Sunday 10am – 5pm ET

Lindblad Expeditions, Inc., 96 Morton Street, New York, NY 10014
Phone: 212.261.9000 • Fax: 212.265.3770

email: explore@expeditions.com For additional information and online reservations, visit us on the Web: www.expeditions.com



96 Morton Street
New York, NY 10014

PRSR STD
U.S. POSTAGE
PAID
LINDBLAD
EXPEDITIONS

Account Number:



1.800.EXPEDITION | WWW.EXPEDITIONS.COM

♻️ Printed on 10% recycled content paper with soy-based inks. We recommend that you pass this along for others to enjoy or recycle.

GAL-098



DOUBLE THE KIDS SAVINGS

Take the kids and save \$1,000
on select 2019 departures.

SEE DETAILS ON PAGE 28