

GALÁPAGOS

DISCOVER THE
MOST INTERESTING
ISLANDS ON EARTH

FREE AIR
ON SELECT DATES

Española Island, GALÁPAGOS

1.38° S, 89.67° W

WHEN YOU REALIZE THAT IT MIGHT STILL BE 1835 AND YOU MIGHT AS WELL BE CHARLES DARWIN

You know the charge you get when you come upon something wild and unexpected, something rare and beautiful? We live for those moments. We sail to the ends of the earth to find them, to discover them anew, and conjure them for our guests.

THAT'S THE EXHILARATION OF DISCOVERY

TABLE OF CONTENTS

- 2** Where Awesome Is
- 4** Serendipity, Naturally
- 6** All About Teamwork
- 8** Go Your Own Way
- 10** National Geographic Photography
- 12** Where Families Connect
- 14** Dining Aboard
- 16** Exploring Galápagos
- 18** Our Ships
- 20** Galápagos
- 22** Wild Galápagos Escape
- 24** Galápagos + Machu Picchu & Peru's Land of the Inca
- 26** Wild Galápagos & Peru Escape
- 28** *National Geographic Islander*
- 30** *National Geographic Endeavour II*
- 32** Options/Extensions



DISCOVER THE JOY OF WILD
ANIMALS SIMPLY LIVING THEIR
LIVES IN FRONT OF YOU





ON AN AFRICAN SAFARI, YOUR GUIDES HAVE TO WORK HARD to ensure you'll spot one of the often-elusive 'big five' species. In Galápagos, no binoculars required. Chances are, your naturalists will have to route you around the charismatic endemic species that cross your path, graze beside you, take a break, or take a nap pretty much anywhere they want. There's always fascinating behavior to observe and learn about—courtship, nesting, raising young, feeding, defending territory and more. And because Galápagos' animals don't fear humans, you'll have a rare experience of closeness—literally and figuratively. You could visit Galápagos 50 times, as Sven Lindblad has, and see something new each time, any time of the year.

Travel with us, and our 50 years of experience guarantees you exciting opportunities every day. As do our two ships. Choose the yacht-scaled 48-guest *National Geographic Islander*, or the 96-guest *National Geographic Endeavour II*. With different personalities to suit a range of different travel tastes, both are equally well-equipped for getting you out on thrilling, personal explorations, and rewarding you with comfort and amenities.

“Galápagos is very far from any experience most people can imagine. It's a wild and spectacular place, a destination everyone with even an ounce of interest in wildlife or natural history should visit. Choose to go with us, and I wholeheartedly believe you will have made the right choice. While geography belongs to everyone, the perspective that will enrich your experience, well that's another matter entirely.”

— SVEN-OLOF LINDBLAD
CEO & Founder

Sierra Negra, Isabela Island
0.83° S, 91.17° W

A VOLCANO DISPLAYS AS IF
ON CUE—IT'S NOT HOLLYWOOD
BUT IT'S A PRODUCTION

WIRE SERVICES WORLDWIDE ARE BEAMING THE NEWS: VOLCANO blows in Galápagos—and you're there! On the ship's bow, eyes trained on the glow ahead, (Cue the lava!) seeing the pour of molten red course down the island's flank (And, action!), hearing hiss of billowing steam hitting the water! How does this happen? How do you get to eyewitness one of nature's best spectacles? It happens because your entire crew is dead-set on creating unforgettable experiences for you.

It happens because your captain, your expedition leader and the ship's naturalists are joined at the hip when it comes to capitalizing on the opportunities that nature might present. It happens because your entire team is committed to doing what it takes so you can have this experience, in addition to all the planned ones. It happens because the kitchen staff knows that THIS is the catch of the day and, if necessary, dinner can wait. After all, you didn't come all this way to miss one moment of natural drama and spectacle: you came to get as close as possible. It's a production, alright. And you're front row for the show.

Nature offers no guarantees. Of course it's impossible to actually "cue" a volcanic display. So, rely on the skill of our team: if there's something to see, they'll ensure you will.



“What makes Lindblad's style in Galápagos unique is the collaboration. Every operator hires expert local guides, as it is mandatory. But Lindblad adds an overlay: real teamwork. The expedition leaders (ELs) and captains work daily in coordination to create opportunities. And the ELs also collaborate with the hotel managers. Everyone is united in creating the best experience for our guests.”

— LYNN FOWLER
Expedition Leader



YOUR EXPEDITION TEAM IS ACE
AT DOING WHATEVER IT TAKES





IN MANY RESPECTS, GALÁPAGOS DOESN'T EXIST UNTIL YOU discover it. When you step off our ship, it's as if it's 1790 and you're a Nantucket whaler stretching your sea legs, or it's 1835 and you're Charles Darwin, disembarking the *Beagle* to explore the unexplored. But sometimes even the most intrepid of adventurers need a guide—and that's where we come in. Our team has the knowledge and the passion for Galápagos that will kindle yours. And our generous staff-to-guest ratio means you can gravitate to the naturalists whose personalities and interests match yours. They will do whatever it takes, from maintaining a lookout so you don't miss a passing whale; offering an extra snorkel when sea turtles are congregating nearby; or pausing on a walk, as happens, to witness the birth of a sea lion pup. They'll help you to see, do, and absorb all the extraordinary experiences—in comfort, with inspiration, great conversations, and excellent dining included.

“Just as the Zodiacs approached the *National Geographic Islander* for boarding after an exhilarating snorkel, our naturalist got a radio message that killer whales had been sighted! Instead of continuing to the ship, our Zodiacs changed course and—off we went! For the next hour we followed a pod of six; the matriarch and what seemed to be a couple of young males and females (we were told they were her offspring), and even a much younger one, the baby of the family. When can stuff like this happen to you? I feel so lucky that our expedition team went with it and let us have this experience—amazing!”

— JAKE W. GUEST

YOU'RE EXPLORING GALÁPAGOS WITH THE FREEDOM TO ENJOY IT YOUR WAY

EACH DAY, WE PROVIDE A FRESH DESTINATION PLUS

all kinds of choices of what to do. Hike, paddleboard, kayak. Snorkel, arrange to dive, hang out with your photo instructor. But should you decide to sleep in, have a slow breakfast, and get a massage, nobody will look at you funny. You're on vacation. Your vacation. Our schedules are flexible and our itineraries more a function of what's to see than where we need to be. So, if you want to work up a sweat on your walk, snorkel every time it's offered, (often two times a day) or sit and breathe it all in—do it. It's your adventure. Our generous staff-to-guest ratio means you can always find a naturalist whose interests and approach you share. You're free to explore the ship, find your nook or cranny. And always welcome to come up to the bridge and shoot the breeze with the Captain and officers.

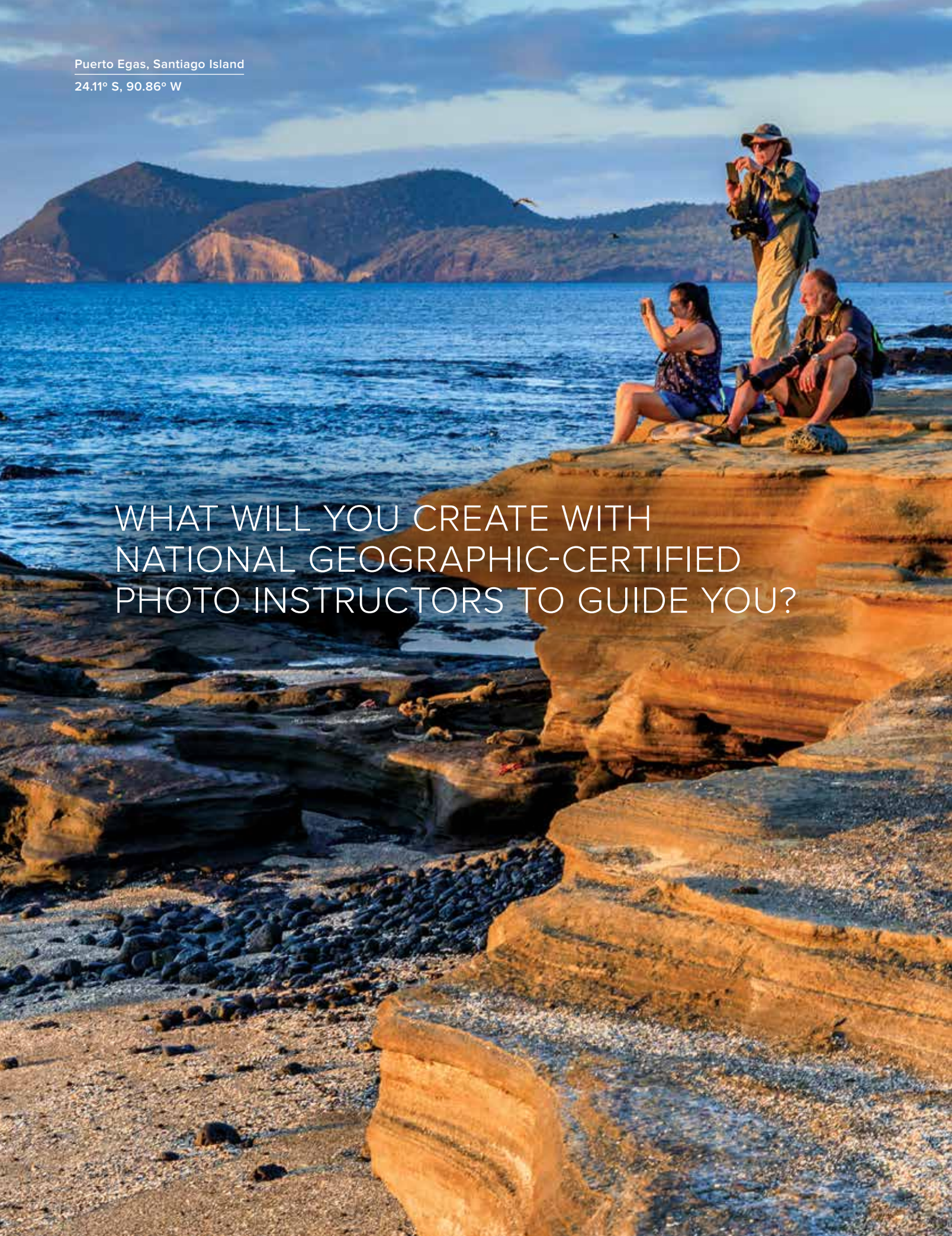
We enable Scuba divers to experience Galápagos' diverse marine life, by arrangement with a local dive operation. Requirements are certification by an internationally recognized body such as PADI or NAUI. Available to intermediate and advanced divers with recent experience, diving is available on select *National Geographic Endeavour* // departures, at an additional cost. Speak with an Expedition Specialist for dates and details.



GO YOUR OWN WAY



Puerto Egas, Santiago Island
24.11° S, 90.86° W

A scenic photograph of a rocky coastline in Puerto Egas, Santiago Island. Three people are on a large, layered rock formation in the foreground. One person stands on the right, wearing a hat and a backpack, holding a camera. Two other people are sitting on the rock to the left, also holding cameras. The ocean is a deep blue, and the background features a large, dark mountain range under a cloudy sky. The text 'WHAT WILL YOU CREATE WITH NATIONAL GEOGRAPHIC-CERTIFIED PHOTO INSTRUCTORS TO GUIDE YOU?' is overlaid in white, sans-serif font across the middle of the image.

WHAT WILL YOU CREATE WITH
NATIONAL GEOGRAPHIC-CERTIFIED
PHOTO INSTRUCTORS TO GUIDE YOU?



WHILE YOU'RE DISCOVERING GALÁPAGOS, YOU'LL HAVE THE benefit of a Lindblad-National Geographic certified photo instructor (CPI) at your side and at your service. He or she can help you with anything from camera settings to the basics of composition. Now, every guest—from iPhone camera users to advanced hobbyists—can stand side-by-side with skilled photographers, pick up tips in the field, and take great photos. Our CPIs are also trained naturalists so they'll help you better understand wildlife behavior, too. Whether you're choosing a shutter speed to capture a tortoise or framing a sea lion against a killer backdrop, in-the-moment tips from accomplished pros will help you return home with your best photos ever.

GALÁPAGOS PHOTO EXPEDITIONS

Travel with National Geographic photographers on specific departures. Share the adventure with any of them to benefit from inspiration, tips, and superb storytelling techniques.

National Geographic photographers:

2019:

JONATHAN IRISH

May 24 & 31

@jonathan_irish

THOMAS PESCHAK

Nov. 29 & Dec. 6

@thomaspeschak

National Geographic Endeavour II

2020:

RICH REID

Jan. 11 & 18

@richreidphoto

ANNIE GRIFFITHS

Aug. 15 & 22

@anniegriffithsphotography

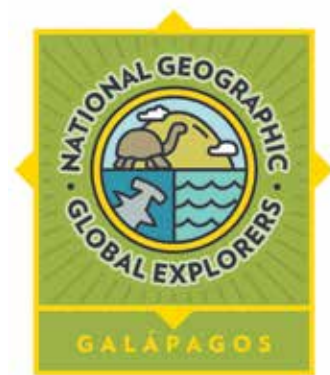
National Geographic Islander

▶ Visit expeditions.com/ngps to learn more about these National Geographic Photographers.



THE MOST EXHILARATING DISCOVERIES ARE THE ONES YOU MAKE TOGETHER

WHETHER IT'S KAYAKING ALONG A LAVA WALL, EYED BY rare Galápagos penguins, laughing at blue-footed booby antics, or observing grazing tortoises in the highlands, we believe shared activities in a wild and unfamiliar environment can bring a family together. Our expeditions ensure seamless family getaways where everything is taken care of. Kids thrive in the safe, comfortable space of the ship where they can exercise a measure of autonomy. Our naturalists and National Geographic certified field educators are excellent role models who ably embed learning into every activity. And since we believe in the value of sharing Galápagos with your kids and grandkids for fun and learning, we're offering **\$1,000 savings on select 2019 departures for each child under 18.**



National Geographic Global Explorers Program

Our exclusive program for kids and teens is the only one of its kind in Galápagos travel. Developed in conjunction with National Geographic Education, it's designed to help kids and teens under 18 develop the attitudes, skills, and knowledge of an explorer. Families discover a unique way to explore and connect with each other and the natural world. And kids engage in a variety of cool optional activities, guided by a National Geographic certified field educator. Visit expeditions.com/family for program details.





Highlands, Santa Cruz Island
69.37° S, 90.32° W

LOCAL LOVE: INTRODUCING FARM-TO-TABLE DINING IN GALÁPAGOS



LAUNCHED IN GALÁPAGOS IN 2017 BY OUR

Director of Hotel Services, Ana Esteves, our pioneering farm-to-table culinary program is rooted in our commitment to sustainability. We are proud to have already provisioned more than 20 tons of organic and local produce for our two Galápagos ships. One farm supplies specialty produce exclusively for us: chilies, flat leaf kale, heirloom cherry tomatoes, cilantro, and edible flowers.

Our collaboration with this farm has allowed them to enhance their innovative eco-agriculture and self-composting systems to use less water and turn organic waste into fertilizer. In addition to delighting our guests with fresh, delicious produce, sourcing locally limits importing and the risk of bringing potentially invasive species into the islands. Eat up!

▶ Learn more at expeditions.com/galadining

EXPLORE THE ENCHANTED
ISLANDS WITH THE COMPANY
BEST ADAPTED TO REVEAL THEM





IN THE GALÁPAGOS, NO SINGLE SITE CAN BE VISITED BY

the same ship more than once over a two-week period.

The idea was developed in 2011, and Lindblad was the first voluntary adopter of this innovative new proposal by the Galápagos National Park, which had as its purpose to spread people out to allow for a more intimate experience. We have created an optimal balance during each week in terms of terrain and wildlife. If you wish to see all the sites, you could join for two weeks, but be assured there is no better week to experience Galápagos—just nuances from one week to the other.

And now we offer in addition to our classic 10-day expedition, more compact 7-day expeditions and 9-day Galápagos + Peru. No matter which you choose, you'll visit key islands, experience all the habitats and meet the legendary Galápagos inhabitants.

EXPEDITION HIGHLIGHTS

- Visit a new island daily
- Walk among wildlife unfazed by your presence
- Snorkel, sometimes twice a day, with sea lions, sea turtles and abundant fish, or explore in a glass-bottom boat (*National Geographic Endeavour II*)
- Head into the highlands to observe giant Galápagos tortoises in the wild
- Enjoy our daily cocktail hour Recap with engaging presentations, including the undersea, by naturalists and photographers

▶ Visit [expeditions.com/Galapagos](https://www.expeditions.com/Galapagos) for itineraries.



TWO SHIPS, DIFFERENT PERSONALITIES WITH THE SAME ABILITY TO THRILL

WELL EQUIPPED FOR ADVENTURES OFF SHIP, *NATIONAL Geographic Islander* and *National Geographic Endeavour II* are equally well equipped for living well. Gathering places like the open decks, lounge and dining room contribute to the esprit de corps that is a hallmark of our expeditions. Fully stocked libraries serve those who want to learn more and those who want to settle in with a best-seller. Our wellness centers, fitness rooms, and on-deck stretching sessions with our wellness specialists add the mind-body connection to Galápagos' "tonic of wildness." And cossetting cabins, outfitted with our signature linens and feather duvets, provide the perfect ending to active days.

▶ See more ship details at expeditions.com/galaships

“My wife and I took the one week Galápagos excursion on the Lindblad *National Geographic Islander* in mid-February. It was a fantastic experience, exceeded our admittedly high expectations and... we can recommend highly...”

— CRUISE CRITIC MEMBER
ALERION28
Sailed February 2017.

OUR SHIPS



ISABELA

Toast crossing the Equator at Volcán Ecuador, the northernmost of the island's six great shield volcanoes. Keep an eye open for whales and dolphin as you ply these rich waters, once the haunt of whalers and pirates.

GENOVESA

Sail to the remote northern realm of the Galápagos, a seabird paradise bathed in warm tropical waters.

SANTIAGO

Explore tide pools and search for fur seals in quiet grottos on this island where lava walks, a coastal forest, and kayaking along lava flows are high points.

BARTOLOMÉ

Climb to the summit of this volcanic wonderland, then snorkel and swim from a golden beach.

NORTH SEYMOUR

Encounter nesting frigatebirds, plus land and marine iguanas, and enjoy a beautiful coastal walk.

FERNANDINA

One of the most active oceanic volcanoes in the world, it's the youngest, most pristine island in Galápagos—and home to the strange flightless cormorant and the largest population of marine iguanas.

RÁBIDA

SANTA CRUZ

Call at Puerto Ayora, the largest town and headquarters of both the Charles Darwin Research Station and Galápagos National Park. Head to the lush, green highlands to see giant tortoises roaming in the wild.

FLOREANA

Follow a trail along a rose-pink lagoon across Punta Cormorant. Visit Post Office Bay, founded by 18th-century whalers, on this mysterious island adorned with green, rolling hills and freshwater springs.

**Please Note: Our in-depth expeditions sail between Isla San Cristóbal and Isla Baltra, and include Isla Santa Cruz and a careful selection of islands and visitor sites. All ship itineraries are subject to Galápagos National Park regulations.*

10 DAYS / 9 NIGHTS ABOARD NATIONAL GEOGRAPHIC ENDEAVOUR II AND NATIONAL GEOGRAPHIC ISLANDER

FROM: \$7,190

(SEE PAGES 28-31 FOR DETAILS)

EXPEDITION DETAILS

2019-2020 Dates:

Ten-day expeditions, departing Fridays on *National Geographic Endeavour II* and Saturdays on *National Geographic Islander*.

SPECIAL OFFERS:

- Book by Mar. 31, 2019 on select 2019 and 2020 departures for FREE AIRFARE between Miami and Galápagos. See page 33.
- Book by Mar. 31, 2019 on select 2019 Galápagos departures and take \$1,000 OFF KIDS UNDER 18. See page 33.
- Your bar tab and Wi-Fi are complimentary on all departures. See page 33 or call for details.

SOUTH PLAZA

Sea lions greet us at South Plaza, an uplifted volcanic block carpeted in salt-loving succulents and teeming with wildlife.

SAN CRISTÓBAL

Search for red-footed boobies and the endemic mockingbird and lava lizard—found only on this easternmost island. Explore Baquerizo Moreno, where sea lion colonies thrive in the middle of town.



ESPAÑOLA

Home to swallow-tailed gulls, Española mockingbirds, Nazca boobies and, seasonally, the world's only population of waved albatross at Punta Suarez.



ITINERARY AT A GLANCE

Day 1	U.S./Guayaquil, Ecuador
Day 2	Guayaquil / Galápagos / Embark
Day 3-8	Galápagos Islands aboard <i>National Geographic Islander</i> or <i>National Geographic Endeavour II</i>
Day 9	Galápagos / Disembark / Guayaquil
Day 10	Guayaquil / Home

- ▶ Visit expeditions.com/galapagos for a day-by-day itinerary. Or call to speak with an Expedition Specialist.

OPTIONAL EXTENSIONS

Make the most of your travel by exploring more on a pre-voyage extension to Mashpi and Quito, or by continuing your adventure at iconic Machu Picchu.



Santa Cruz Island
0.63° S, 90.33° W



DON'T HAVE THE TIME OR THE INCLINATION TO SPEND 10 DAYS exploring Galápagos? Then, take advantage of our compact 7-day itinerary. This is where our deep knowledge and experience in the islands comes in handy: we can ensure you will miss none of the highlights. Your more compact voyage will be as eventful and enriching as the longer voyage—but in less time.

7 DAYS / 6 NIGHTS ABOARD NATIONAL GEOGRAPHIC ISLANDER

FROM: \$5,630

(SEE PAGES 28-29 FOR DETAILS)

EXPEDITION DETAILS

2019 Dates:

Apr. 27; May 2, 11, 16; Aug. 31;

Sep. 5, 14, 19; Oct. 31

Limited availability.

2020 Dates:

Feb. 1, 6; May 9, 14, 23, 28;

Jul. 18, 23; Aug. 29; Sep. 3;

Nov. 7, 12, 21, 26

SPECIAL OFFERS:

- Book by Mar. 31, 2019 for FREE AIRFARE from Ecuador to Galápagos on select 2019 and 2020 departures. Call for details.
- Your bar tab and Wi-Fi are complimentary on all departures. See page 33 or call for details.

ITINERARY AT A GLANCE

Day 1	U.S. / Guayaquil, Ecuador
Day 2	Guayaquil / Galápagos / Embark
Day 3-6	Galápagos aboard <i>National Geographic Islander</i>
Day 7	Disembark / Baltra / Guayaquil / Depart

- ▶ Visit [expeditions.com/wildgala](https://www.expeditions.com/wildgala) for a day-by-day itinerary. Or call to speak with an Expedition Specialist.

NATIONAL GEOGRAPHIC EXPERT

Marine biologist, filmmaker and National Geographic Explorer Tierney Thys will join the September 14, 2019 departure.

OPTIONAL EXTENSION

Add a two-day post-voyage extension to UNESCO-designated Quito & famous Otavalo market. Visit [expeditions.com/Quito](https://www.expeditions.com/Quito) for details.



GALÁPAGOS ISLANDS

DAYS 2-8

Explore the islands
(see map on pages 20-21).



GUAYAQUIL, ECUADOR

DAY 1

Upon arrival, transfer to the
Hotel del Parque (*National
Geographic Islander*) or
Hotel Hilton Colón (*National
Geographic Endeavour II*).
Ask about extra nights.

ECUADOR

“If your time allows, take advantage of the incredible opportunities that abound in the region. Machu Picchu is simply awesome; and the deep steep in Inca culture our itinerary provides is great on its own, and as an intriguing counterbalance to the wildness of Galápagos.”

— SVEN-OLOF LINDBLAD, CEO & Founder



YOU CAN EASILY MAKE THE MOST OF YOUR TRAVEL TIME BY

combining an exploration of Machu Picchu and Inca Peru with your Galápagos voyage. All you need is the time and curiosity, your Expedition Specialist will make all the arrangements—for a seamless transition from your ship to your accommodation at the stunning properties we stay at on this itinerary. See this overview for a sense of where you'll go and what you'll do.

**16 DAYS / 15 NIGHTS ABOARD
NATIONAL GEOGRAPHIC ENDEAVOUR II
AND NATIONAL GEOGRAPHIC ISLANDER
+ LAND EXCURSION**

FROM: \$13,080

(SEE PAGES 28-31 FOR DETAILS)

EXPEDITION DETAILS

Dates: Year-round, weekly departures following Galápagos aboard *National Geographic Islander* and *National Geographic Endeavour II*.

ITINERARY AT A GLANCE

- Day 1 U.S. / Guayaquil, Ecuador
- Day 2 Guayaquil / Galápagos / Embark Ship
- Day 3-8 Exploring the Galápagos Islands aboard *National Geographic Endeavour II* and *National Geographic Islander*
- Day 9 Galápagos / Guayaquil / Lima, Peru
- Day 10 Lima / Cusco / Sacred Valley of the Inca
- Day 11 Sacred Valley of the Inca
- Day 12 Sacred Valley / Machu Picchu
- Day 13 Machu Picchu / Cusco
- Day 14 Cusco
- Day 15 Cusco / Lima
- Day 16 Lima / U.S.

▶ Visit expeditions.com/peru for a day-by-day itinerary. Or call to speak with an Expedition Specialist.

NATIONAL GEOGRAPHIC EXPERT

Gain insight from National Geographic grantee, Peter Frost, or a colleague on our departures.

PERU

LIMA

DAY 9 / DAY 16

Arrive in Lima, Peru's thriving capital. Upon your return, celebrate with a private farewell lunch and discover the pre-Columbian treasures at the Larco Museum.

SACRED VALLEY & MACHU PICCHU

DAYS 10-14

Spend two nights in the Sacred Valley. Watch twilight descend on Machu Picchu after the crowds have disappeared and overnight at the historic Belmond Sanctuary Lodge.

CUSCO

DAYS 14-15

Explore the rich culture and heritage of Cusco and surroundings from our base in the colonial center of this Inca imperial city.



Cusco, PERU
13.53° S, 71.97° W



DISCOVER TWO ICONIC WONDERS IN 9 DAYS. BEGIN IN PERU

where you'll journey on the first-class Inca Rail between Ollantaytambo and Machu Picchu. Remain late in the day to experience sunset at the fabled sacred site. Then head for Galápagos to hike, kayak, paddleboard, and Zodiac cruise among iconic wildlife and otherworldly landscapes.

**9 DAYS / 8 NIGHTS ABOARD
NATIONAL GEOGRAPHIC ISLANDER**

FROM: \$6,470

(SEE PAGES 28-29 FOR DETAILS)

EXPEDITION DETAILS

2019 Dates:

May 4, 18; Sep. 7, 21; Nov. 2.

Limited availability.

2020 Dates:

Feb. 8; May 16, 30; Jul 25;

Sep. 5; Nov. 14, 28

SPECIAL OFFERS:

- Book by Mar. 31, 2019 for FREE AIRFARE from Ecuador to Galápagos on select 2019 and 2020 departures. Call for details.
- Your bar tab and Wi-Fi are complimentary aboard *National Geographic Islander*. See page 33 or call for details.

ITINERARY AT A GLANCE

Day 1	U.S. / Lima, Peru
Day 2	Lima / Cusco / Sacred Valley
Day 3	Machu Picchu
Day 4	Sacred Valley / Guayaquil
Day 5-8	Guayaquil / Galápagos aboard <i>National Geographic Islander</i>
Day 9	Disembark / Baltra / Guayaquil

- ▶ Visit [expeditions.com/wildgalaperu](https://www.expeditions.com/wildgalaperu) for a day-by-day itinerary. Or call to speak with an Expedition Specialist.

OPTIONAL EXTENSION

Add a two-day post-voyage extension to UNESCO-designated Quito & famous Otavalo market. Visit [expeditions.com/quito](https://www.expeditions.com/quito) for details.



NATIONAL GEOGRAPHIC ISLANDER

YACHT-SCALED AND TRIM, OFFERING EXPEDITION AMENITIES FOR JUST 48 GUESTS

CAPACITY: 48 guests in 24 outside cabins.

REGISTRY: Ecuador. **OVERALL LENGTH:** 164 feet.

PUBLIC AREAS: Open-air observation deck, second covered outside deck with hammocks, tables and chairs. Lounge and bar accommodating all guests for presentations and gatherings, dining room, library, Mac kiosks and Internet. The captain and officers welcome guests to visit the open bridge.

MEALS: Served in a single, unassigned seating in a sociable, informal atmosphere with Ecuadorian flair.

CABINS: All have a window with an outside view, private facilities, ample storage and climate controls. Bed can be configured as two twins or as a single queen.

CATEGORY 1: Main Deck, Forward #201-206

CATEGORY 2: Main Deck #207-210, Bridge Deck #301, 302

CATEGORY 3: Bridge Deck #303-306. Cabins 305 and 306 can accommodate a third person with sofa bed.

CATEGORY 4: Upper Deck #403-408—with outside, glassed-in terraces with windowed door and seating.

CATEGORY 5: Upper Deck, #401 and 402—forward facing with additional seating, desk, wrap-around windows, glassed-in terrace with seating. Largest cabins aboard.

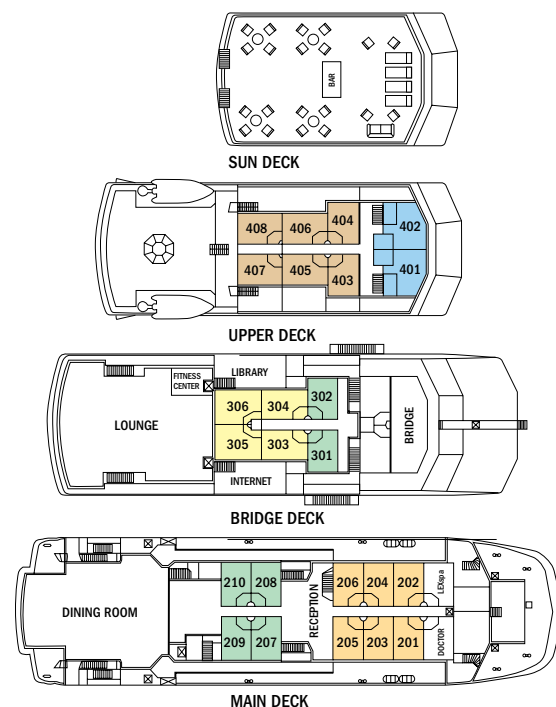
NOTE: All cabins offer two twin beds that can be converted to a queen. Sole occupancy in categories 1 and 2 only. Third person rates for cabins 305 and 306 are one-half per person double occupancy rate.

SHARED ACCOMMODATIONS: Shares can be arranged at the double occupancy rate in Categories 1 and 2 only.

EXPEDITION EQUIPMENT: Zodiacs, a fleet of kayaks and paddleboards, snorkel gear and wetsuits for both adults and children, video microscope and underwater video camera.

SPECIAL FEATURES: Shipboard doctor, Lindblad-National Geographic certified photo instructor, video chronicler, snorkel instruction, Wi-Fi access, laundry service, National Geographic Global Explorers family program, Global Gallery.

WELLNESS: LEXSpa and fitness center, exercise classes, and wellness specialist.





Above photos, from left: relax in a hammock on *National Geographic Islander's* covered deck; the ship anchored close to shore; enjoy fine dining aboard; have a quiet moment in the ship's library; a category 4 cabin and a category 5 cabin offer spacious accommodation.

Prices are per person, double occupancy unless indicated as solo.

ITINERARY		CAT. 1	CAT. 2	CAT. 3	CAT. 4	CAT. 5	CAT. 1 SOLO	CAT. 2 SOLO	ADVANCE PAYMENT	NOTE	
Galápagos: Aboard <i>National Geographic Islander</i> – 10 days/9 nights – Pages 20-21											
Departing Saturdays throughout the year	2019	\$7,550	\$8,650	\$9,590	\$10,150	\$12,350	\$11,390	\$12,990	\$750	International and internal Ecuador tickets must be issued separately for all Galápagos voyages. Sample International Airfares: Round-trip Miami/Guayaquil: Economy from \$500; Business from \$1,050. Sample Internal Airfares: Guayaquil/Galápagos: Adult from \$520 Children (Under 12) from \$260. Call for sample Peru airfare.	
	2020*	\$7,780	\$8,910	\$9,880	\$10,450	\$12,720	\$11,730	\$13,380	\$750		
Holiday	Dec. 21 & 28, 2019	\$8,690	\$9,950	\$11,030	\$11,680	\$14,210	\$13,100	\$14,940	\$1,000		
	Dec. 19 & 26, 2020*	\$9,230	\$10,560	\$11,710	\$12,400	\$15,080	\$13,910	\$15,850	\$1,000		
New! Wild Galápagos Escape – 7 days/6 nights – Pages 22-23											
Apr. 27; May 2, 11, 16; Aug. 31; Sep 5, 14, 19; Oct. 31	2019	\$5,630	\$6,420	\$7,090	\$7,490	\$9,060	\$8,370	\$9,520	\$750		Galápagos flights included. International must be issued separately. Sample international airfares: Round-trip Miami/Guayaquil: Economy \$500.
Feb. 1, 6; May 9, 14, 23, 28; Jul. 18, 23; Aug. 29; Sep. 3; Nov. 7, 12, 21, 26	2020*	\$5,800	\$6,610	\$7,300	\$7,710	\$9,330	\$8,620	\$9,810	\$750		
New! Wild Galápagos & Peru Escape – 9 days/8 nights – Pages 26-27											
May 4, 18; Sep. 7, 21; Nov 2	2019	\$6,470	\$7,100	\$7,630	\$7,950	\$9,210	\$9,110	\$10,030	\$750	Galápagos flights included. International and internal Peru tickets must be issued separately. Sample international airfares: Round-trip Miami/Lima/Guayaquil Economy \$500. Sample Lima/Cusco/Lima plus Lima/Guayaquil from \$935.	
Feb. 8; May. 16, 30; Jul. 25; Sep. 5; Nov. 14, 28	2020*	\$6,660	\$7,310	\$7,860	\$8,190	\$9,490	\$9,380	\$10,330	\$750		
Galápagos + Machu Picchu & The Land of the Inca – 16 days/15 nights – Pages 24-25											
Departing Saturdays throughout the year	2019	\$13,440	\$14,540	\$15,480	\$16,040	\$18,240	\$18,680	\$20,280	\$1,500	International and internal Ecuador tickets must be issued separately for all Galápagos voyages. Sample International Airfares: Round-trip Miami/Guayaquil: Economy from \$500; Business from \$1,050. Sample Internal Airfares: Guayaquil/Galápagos: Adult from \$520 Children (Under 12) from \$260. Call for sample Peru airfare.	
	2020*	\$13,850	\$14,980	\$15,950	\$16,520	\$18,790	\$19,330	\$20,980	\$1,500		
Holiday	Dec. 14, 2019	\$14,170	\$15,270	\$16,210	\$16,770	\$18,970	\$19,210	\$20,810	\$1,500		
	Dec. 28, 2019	\$14,580	\$15,840	\$16,920	\$17,570	\$20,100	\$20,390	\$22,230	\$1,500		
	Dec. 19, 2020*	\$16,050	\$17,380	\$18,530	\$19,220	\$21,900	\$22,180	\$24,120	\$1,500		
	Dec. 26, 2020*	\$15,300	\$16,630	\$17,780	\$18,470	\$21,150	\$21,510	\$23,450	\$1,500		

Prices quoted in this brochure are valid as of the time of printing, are subject to modification, and are not guaranteed until booking and required deposit is made. See our website at www.expeditions.com for the most up-to-date pricing.

*2019 prices guaranteed on 2020 departures if booked by Dec. 31, 2018.



NATIONAL GEOGRAPHIC ENDEAVOUR II

OUR NEWEST SHIP IN GALÁPAGOS, OFFERING EXPEDITION AMENITIES FOR 96 GUESTS

CAPACITY: 96 guests in 52 outside cabins.
REGISTRY: Ecuador. **OVERALL LENGTH:** 236 feet.

PUBLIC AREAS: Forward lounge and bar accommodating all guests for presentations and gatherings, restaurant, large library with Mac kiosks, open-air observation deck, underwater gear area and dual Zodiac boarding platform, and open bridge, where guests can meet the captain and officers and learn about navigation.

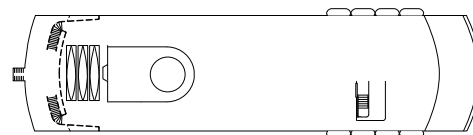
MEALS: Served in a single, unassigned seating in a social, informal atmosphere with Ecuadorian flair.

CABINS: All face outside with large windows, and feature twin beds that convert to a queen. With private facilities and climate control, nightstands, desk, and storage. Seven sets of cabins with a connecting door.

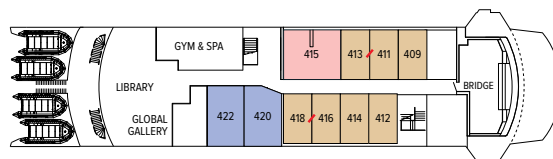
EXPEDITION EQUIPMENT: Zodiacs, glass-bottom boat, kayaks and paddleboards, snorkel gear and wetsuits for both adults and children, video microscope and underwater video camera.

SPECIAL FEATURES: Lindblad-National Geographic certified photo instructor, shipboard doctor, video chronicler, National Geographic Global Explorers family program, snorkel instruction, Wi-Fi access, laundry service, Global Gallery.

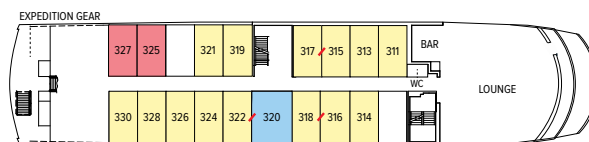
WELLNESS: LEXSpa and fitness center, exercise classes, and wellness specialist.



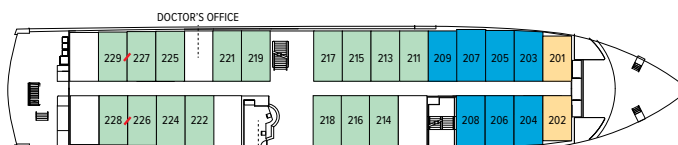
OBSERVATION DECK



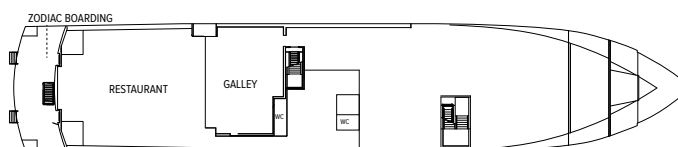
BRIDGE DECK



LOUNGE DECK



UPPER DECK



MAIN DECK

↗ indicates adjoining cabins



Above photos, from left: Relaxing in the library; the ship anchored close to shore; full-service dining with unassigned seating; onboard gym with million-dollar views; a twin-bed cabin; Suite C, the largest on the ship.

CATEGORY 1: Upper Deck, Forward #201, 202

CATEGORY 2: Upper Deck #211, 213-219, 221, 222, 224-229

CATEGORY 3: Lounge Deck #311, 313-319, 321, 322, 324, 326, 328, 330

CATEGORY 4: Bridge Deck #409, 411-414, 416, 418

SUITE A: Lounge Deck, Mid-Ship #320—with two windows, larger bath, arm chair. Connecting door to #322.

SUITE B: Bridge Deck, Mid-Ship #420, 422—with two floor-to-ceiling windows, larger bath, convertible sofa for a third person.

SUITE C: Bridge Deck, Mid-Ship #415—with two large windows, larger bath, separate sitting area with convertible sofa for a third person and arm chairs, largest cabin on ship.

CATEGORY 2 SOLO: Upper Deck #203-209.

CATEGORY 3 SOLO: Lounge Deck #325, 327.

NOTE: All cabins feature the option of two twins or a queen bed, plus large window(s), desk, chair, and closet.

CONNECTING CABINS: #226/228, 227/229, 315/317, 316/318, 320/322, 411/413, 416/418

TRIPLE OCCUPANCY: #224, 225, 326, 328 with fold-down upper third bunk, Suites B and C with convertible sofa bed. Third person rates are one-half per person double occupancy rate.

SHARED ACCOMMODATIONS: Shares can be arranged at the double occupancy rate in Categories 1 and 2.

Prices are per person, double occupancy unless indicated as solo.

ITINERARY		CAT. 1	CAT. 2	CAT. 3	CAT. 4	SUITE A	SUITE B	SUITE C	CAT. 2 SOLO	CAT. 3 SOLO	ADVANCE PAYMENT	NOTE	
Galápagos: Aboard <i>National Geographic Endeavour II</i> – 10 days/9 nights – Pages 20-21													
Departing Fridays throughout the year	2019	\$7,190	\$8,450	\$9,450	\$10,590	\$12,690	\$13,690	\$14,490	\$10,690	\$11,880	\$750	International and internal Ecuador tickets must be issued separately for all Galápagos voyages. Sample International Airfares: Round-trip Miami/Guayaquil: Economy from \$500; Business from \$1,050. Sample Internal Airfares: Guayaquil/Galápagos: Adult from \$520; children under 12 from \$260. Call for sample Peru airfare.	
	2020*	\$7,410	\$8,700	\$9,730	\$10,910	\$13,070	\$14,100	\$14,920	\$11,010	\$12,240	\$750		
Holiday	Dec. 20 & 27, 2019	\$8,270	\$9,720	\$10,870	\$12,180	\$14,600	\$15,750	\$16,670	\$12,300	\$13,670	\$1,000		
	Dec. 18 & 25, 2020*	\$8,520	\$10,010	\$11,200	\$12,550	\$15,040	\$16,220	\$17,170	\$12,670	\$14,080	\$1,000		
Galápagos + Machu Picchu & The Land of the Inca – 16 days/15 nights – Pages 24-25													
Departing Fridays throughout the year	2019	\$13,080	\$14,340	\$15,340	\$16,480	\$18,580	\$19,580	\$20,380	\$17,980	\$19,170	\$1,500		
	2020*	\$13,480	\$14,770	\$15,800	\$16,980	\$19,140	\$20,170	\$20,990	\$18,610	\$19,840	\$1,500		
Holiday	Dec. 20, 2019	\$14,890	\$16,340	\$17,490	\$18,800	\$21,220	\$22,370	\$23,290	\$20,320	\$21,690	\$1,500		
	Dec. 11, 2020*	\$14,230	\$15,520	\$16,550	\$17,730	\$19,890	\$20,920	\$21,740	\$19,280	\$20,510	\$1,500		
Galápagos + Upper Amazon - 18 days/17 nights - Page 32 (Please call for dates and rates)													

Prices quoted in this brochure are valid as of the time of printing, are subject to modification, and are not guaranteed until booking and required deposit is made. See our website at www.expeditions.com for the most up-to-date pricing.

*2019 prices guaranteed on 2020 departures if booked by Dec. 31, 2018.

BEYOND GALÁPAGOS

DISCOVER THE BIODIVERSITY, CULTURAL RICHNESS AND COLONIAL splendors of mainland Ecuador. Choose to experience it all, before or after your Galápagos voyage.

TROPICAL ANDES & COLONIAL QUITO 6 DAYS/5 NIGHTS PRE-VOYAGE EXTENSION FROM: \$2,390

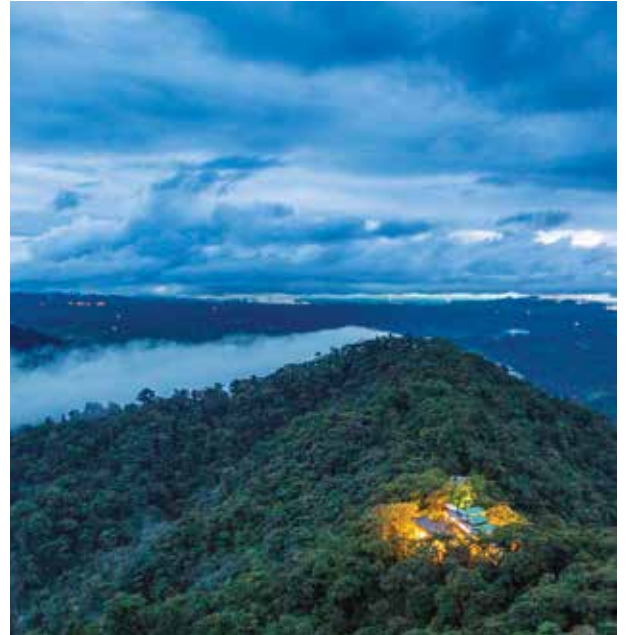
EXPEDITION DETAILS

Weekly departures as a pre-voyage extension for either *National Geographic Islander* or *National Geographic Endeavour II* in Galápagos.

ITINERARY AT A GLANCE

- Day 1: U.S. / Quito, Ecuador
- Day 2: Quito
- Day 3: The Andes / Mashpi
- Day 4: Mashpi
- Day 5: Mashpi / Quito
- Day 6: Quito / Galápagos / Embark

▶ Visit expeditions.com/mashpi for a day-by-day itinerary. Or call to speak with an Expedition Specialist.



GALÁPAGOS + UPPER AMAZON | 18 DAYS/17 NIGHTS ABOARD NATIONAL GEOGRAPHIC ENDEAVOUR II AND DELFIN II FROM: \$13,950

(SEE PAGES 30-31 FOR DETAILS)

EXPEDITION DETAILS

Post-voyage extension for *National Geographic Endeavour II* or *Machu Picchu* and Peru's Land of the Inca on select dates, at a 10% savings.

ITINERARY AT A GLANCE

- Days 1-8: Per Galápagos itinerary on pages 20-21.
- Day 9: Galápagos / Disembark / Guayaquil / Lima, Peru
- Day 10: Lima / Iquitos / Nauta / Embark
- Days 11-16: Pacaya-Samiria National Reserve
- Day 17: Nauta / Iquitos / Lima
- Day 18: Lima / U.S.

▶ Visit expeditions.com/amazon for a day-by-day itinerary. Or call to speak with an Expedition Specialist.

SPECIAL OFFER:

- Save 10% when you combine Upper Amazon with Galápagos and/or Peru. Subject to availability.



SPECIAL OFFERS

BOOK BY MAR. 31, 2019, FOR FREE ROUND-TRIP AIR from Miami on select departures. Or, take advantage of new \$199 and \$299 zone fares from 8 cities on select departures, starting July 2019. Offer on American Airlines only, economy class. Upgrade to Business Class on Miami/Ecuador flights for \$500, subject to availability. Free air offer includes internal flights between mainland Ecuador and Galápagos. All offers are valid for new bookings only, must be ticketed by Lindblad Expeditions and are subject to availability at time of booking. In the case that offered Miami flights are no longer available, Lindblad reserves the right to issue a credit.

MAKE THE MOST OF YOUR TIME IN THE REGION AND SAVE 10% when you combine your Galápagos voyage or Peru expedition with an Upper Amazon voyage.

TAKE THE KIDS & SAVE \$500 Share the wonder of Galápagos with children under 18 and take \$500 off the double occupancy rate per child. Our connecting cabins, triples and suites book quickly, so act fast. Book by Mar. 31, 2019 to double the offer, \$1,000 savings on select 2019 Galápagos departures.

BRING FAMILY OR FRIENDS Like to explore with like-minded others, or want to bring the whole clan? SAVE 5% when traveling as a group of 8 or more—whether it's your friends, book club, member organization, or extended family. Private charters are also available. Call an Expedition Specialist for details.

BAR TAB AND WI-FI INCLUDED Travel aboard any 2019-2020 *National Geographic Islander* or *National Geographic Endeavour II* voyage and we will cover your bar tab. Complimentary bar offer excludes certain premium brands of alcohol. Free Wi-Fi, up to one hour a day per person aboard any 2019-2020 *National Geographic Islander* and *National Geographic Endeavour II* departure. Visit our website or call for details.

COMBINE OFFERS: Certain offers may be combinable, up to two savings opportunities except where noted otherwise. For example, travel with a group of 8 or more on back-to-back expeditions, and take advantage of both savings!

RESERVATION INFORMATION

Terms & Conditions: For complete terms and conditions please visit www.expeditions.com/terms

Costs Include: All accommodations aboard ships or in hotels per itinerary or similar, all meals and non-alcoholic beverages aboard ship, alcoholic beverages excluding certain premium brands (starting in 2019), meals on land as indicated, Wi-Fi (starting in 2019), air transportation where indicated as included, shore excursions, sightseeing and entrance fees, special access permits, transfers to and from group flights, use of snorkeling equipment and wet suits, use of kayaks and stand-up paddleboards, tips (except to ship's crew), taxes and service charges, services of a ship physician and services of our expedition staff.

Not Included: Air transportation (except where shown as included), extensions, optional Scuba excursions, passport, visa, immigration fees, meals not indicated, travel protection plan, items of personal nature, voyage DVD, laundry. Gratuities to ship's crew are at your discretion.

Airfare: For all programs, airfare is an additional cost unless otherwise noted. We will gladly assist in making your air arrangements for a \$50 per person service fee.

Reservations: To reserve your place, an advance payment is required at the time of reservation. The per-person advance payment amount is: \$750 or \$1,000 for select holiday departures.

Final Payment: Final payment is due 90 days prior to departure. We reserve the right to cancel your reservation if payment has not been received by final payment due date.

Travel Protection Plan: We strongly recommend that you take advantage of our Travel Protection Plan. This plan offers comprehensive coverage to protect you from cancellation fees, costs incurred due to trip delays/interruption, medical assistance, and damaged or lost baggage, and provides medical assistance and evacuation during your travels. Our Travel Protection Plan is available for U.S. and Canadian residents only, and may be purchased any time prior to final payment due date. Travel Protection premiums are non-refundable once plan is purchased. If you are not satisfied for any reason, you may return your plan within 10 days after purchase. Your premium will be refunded if canceled within 10 days, provided you have not already departed on the trip or filed a claim. When so returned, the coverage under the plan is void from the original date of purchase.

Responsibility and Other Terms & Conditions: Certain provisions concerning, among other things, limitations of Lindblad Expeditions' and the National Geographic Society's liability for loss of property, injury, illness or death during the voyage will be provided to all guests on the ship's ticket sent prior to departure, and are also available on our website at www.expeditions.com/terms, or upon request. By registering for a trip, the guest agrees to all such terms and conditions.

Note: Itineraries and prices listed in this brochure are as of publication date and are subject to change. Under normal conditions the total expedition price is guaranteed at the time of booking. However, our expedition pricing is determined far in advance of initial departure on the basis of then-existing projections of fuel and other costs. In the event of increases in those costs including, but not limited to, increases in the price of fuel, currency fluctuations, increases in government taxes or levies, or increased security costs, we reserve the right to adjust the price of your expedition or add a surcharge to cover such unexpected increases. We will always provide an explanation of the reason.

Cancellation Policy: Cancellation penalties may apply after payment is received. Please visit www.expeditions.com/terms for complete cancellation policies.

Unused services or items included in our programs are non-refundable.

©2018 Lindblad Expeditions

Lindblad Expeditions and the Eye are the trademarks of Lindblad Expeditions. All rights reserved.

NATIONAL GEOGRAPHIC and the Yellow Border are the trademarks of the National Geographic Society. All rights reserved.

Photo Credits: Jonathan Aguas, Stewart Cohen, Jennifer Davidson, Ana Esteves, Ralph Lee Hopkins, Bennett Goldberg, Burt Johnson/Alamy, Jeff Litton, Sven-Olof Lindblad, Michael S. Nolan, Marco Ricca, Carlos Romero, Krista Rossow, Darrel Schoeling, Socrates Tomala, David Vargas, Paul Williams/Alamy.

For Reservations: Contact your travel advisor or Lindblad Expeditions

1.800.EXPEDITION (1.800.397.3348)

**Reservation Hours: Monday – Friday 9am – 9pm ET
Saturday & Sunday 10am – 5pm ET**

Lindblad Expeditions, Inc., 96 Morton Street, New York, NY 10014

Phone: 212.261.9000 • Fax: 212.265.3770

email: explore@expeditions.com For additional information and online reservations, visit us on the Web: www.expeditions.com



96 MORTON STREET, NEW YORK, NY 10014

PRSRST STD
U.S. POSTAGE
PAID
LINDBLAD
EXPEDITIONS

Account Number:



1.800.EXPEDITION | WWW.EXPEDITIONS.COM

♻️ Printed on 10% recycled content paper with soy-based inks. We recommend that you pass this along for others to enjoy or recycle.

GAL-18B



SPECIAL OFFER
BOOK BY MAR. 31, 2019,
FOR FREE ROUND-TRIP AIR
from Miami on select departures.