

Scotland

ABOARD *LORD OF THE GLENS*
2023 VOYAGES | [EXPEDITIONS.COM](https://www.expeditions.com)



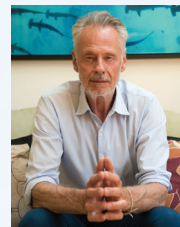


Cover: Valley view below the mountains of Glencoe, Lochaber, Highlands, Scotland.

This page: Beautiful Glenfinnan lies on the shore of Loch Shiel. The monument commemorates the Jacobite Rising of 1845-46.

DEAR TRAVELER,

The first time I boarded the 48-guest *Lord of the Glens*—the stately ship we've been sailing through Scotland since 2003—I was stunned. Frankly, I'd never been aboard a more welcoming and intimate ship that felt somehow to be a cross between a yacht and a private home. She's extremely comfortable, with teak decks, polished wood interiors, fine contemporary regional cuisine, and exceptional personal service. And she is unique—able to traverse the Caledonian Canal, which connects the North Sea to the Atlantic Ocean via a passageway of lochs and canals, and also sail to the great islands of the Inner Hebrides.



This allows us to offer something few others can—an in-depth journey through the heart of Scotland, one that encompasses the soul of its highlands and islands. You'll take in Loch Ness and other Scottish lakes, the storied battlefield of Culloden where Bonnie Prince Charlie's uprising came to a disastrous end, and beautiful Glenfinnan. You'll pass through the intricate series of locks known as Neptune's Staircase, explore the historic Isle of Iona, and the isles of Mull, Eigg, and Skye, and see the 4,000-year-old burial chambers and standing stones of Clava Cairns. There's even time for a visit to the most remote pub in the British Isles.

Scotland is a land of grand castles, beautiful moorlands, sacred abbeys, and sweeping mountains and you'll have the opportunity to experience it all as few get to. Hike through the rolling countryside, or use bikes to cover more ground. For a unique perspective walk alongside the tree-lined canal as *Lord of the Glens* transits the locks. Plus, enjoy the picturesque waters of Loch Linnhe or Loch Eil on a kayaking journey that runs parallel to the West Highland Train Line and in the shadow of Britain's highest mountain, Ben Nevis.

As always, you'll explore in the company of our excellent staff. A historian and a naturalist will share their knowledge and enthusiasm with you, and a Lindblad-National Geographic certified photo instructor will help you capture your best shots.

As you leaf through the following pages, envision yourself exploring with us in the wake of Celtic saints and Vikings. And as a Scottish Highlander would say, *Turas math dhut* (Good travels to you!).

All the best,



Sven-Olof Lindblad

P.S. If you join us, you'll surely want to consider extending the pleasures—with a stay in the lively city of Edinburgh to experience its famed castle, walk its winding medieval streets, and discover its contemporary charms. See page 16 to learn more.

THROUGH SCOTLAND'S

Grand castles, lyrical moorlands, sacred abbeys, and sweeping mountains—from the long traditions of Scotland's clans and monarchs to Bonnie Prince Charlie's famed rebellion, the romance and intrigue of Scotland's countryside and traditions speak to all of us.



Duart Castle.

We've been offering expeditions in Scotland for decades, endlessly discovering new facets with our guests. And for some years now, we've offered in-depth journeys aboard

the 48-guest *Lord of the Glens*, the only ship that makes this voyage possible in such distinct style. Purpose-built for these waters, *Lord of the Glens* is both gracious and uniquely able. Designed to fit through the narrow canals and stepped locks in the heart of Scotland, and seaworthy for navigating the waters of the Scottish Isles, *Lord of the Glens* enables you to enjoy a peerless combination: the famous lochs; the magnificent scenery of the Scottish countryside with its welcoming villages, castles, pubs, and medieval battlegrounds; and the Inner Hebrides, steeped in nature and history. And rewarding cultural encounters, as well: a fine fiddle-and-button-accordion duo and Highland dancers come on board to perform during your journey, offering you an intimate experience of Scottish spirit and tradition.





HIGHLANDS

& ISLANDS



Watching Lord of the Glens transit the Caledonian Canal's locks is a unique experience for guests and locals alike.

The Caledonian Canal, designed by the great Scottish engineer Thomas Telford, is an engineering marvel. Conceived in the latter part of the 18th century to connect the North Sea with the Atlantic and revitalize the economy of the Scottish Highlands, it was finally completed in 1822 after 19 years of construction by manual labor. As an artery of commerce, it was almost immediately outmoded as many new ships were too large to use the canal, but its status as a point of pride and attraction for Scotland was cemented when Queen Victoria sailed its waterways in 1873. It remains beloved by Scots and visitors today.

On our voyage aboard *Lord of the Glens*—the only ship of its kind able to undertake such a voyage—we'll pass through 22 locks (including the flight of 8 locks known as Neptune's Staircase), sail along 5 lochs and several rivers and waterways, and pass through 7 swing bridges. We'll then proceed to the Inner Hebrides and the historic isles of Mull, Iona, Eigg, and Skye—a voyage that is tremendous in scope and a source of learning and enjoyment.

Our pathway through the heart of Scotland, the Caledonian Canal.

A PEERLESS AMBIENCE & EXTRAORDINARY COMFORT



Imagine a stately country manor house with a Harry Potter-esque magical ability to float off its moorings, and you have a sense of what life aboard *Lord of the Glens* is like. The ambience is that of a private home, with warm, rich woods and upholstered furnishings so comfortable even the most virulent anti-smoker might yearn for a pipe. Yet the teak, mahogany, brass touches, and the



terraces on the top deck proclaim that she is proudly nautical—in a grand maritime tradition.

The dining room accommodates the entire expedition community at once, with no assigned seating, for convivial mingling throughout the voyage. Despite the pleasing formality of the fine china, silver cutlery, and French crystal, casual clothing and an informal atmosphere prevail. Dining is highly gratifying; the chef provisions all along the way, and uses the finest and freshest local fruit, produce, and other ingredients, sourced from sustainable providers wherever possible.



HOSPITALITY NOTE:

Whether it's cocktails in the lounge at evening Recap, a nightcap, or drinks with new friends at the lounge bar, your *Lord of The Glens* bar tab is on us. We'll also handle the crew gratuities, so you can simply relax and enjoy their gracious service. Plus, stay connected with complimentary Wi-Fi.







STEP INTO SCOTTISH HISTORY, LIVE LIKE A LOCAL

George MacLeod, the founder of the Iona Community, famously described the Isle of Iona as “a thin place,” where the boundaries between the material and the spiritual are felt in close proximity and few are unaffected by its atmosphere. The same could be said of our entire expedition—it sails through a thin place where the boundaries between traveler and local are swept away. Get a real sense of life in Scotland when you hop off the ship to stroll along the local lanes, greeting locals out walking their dogs or pausing to see the ship transit a series of locks. Take a bike ride at length, experiencing rolling moorlands. Discover the fabric of daily life in the colorful villages and seldom-visited outlying islands where tall tales are traded among pub-goers. This expedition creates the chance to explore with all your senses, and gain a real sense of being in Scotland; one that goes well beyond simply seeing the sights.

Clockwise from above: Choose to walk or bike along the Caledonian Canal; Iona Abbey cloisters; a young bagpiper turns out to greet our ship; guests kayaking on Loch Linnhe toward Ben Nevis, the highest mountain in the British Isles.



“Explore Culloden battlefield, where the French-supported Jacobite forces were brutally defeated by the British in 1746, crushing Bonnie Prince Charlie’s bid for the throne. Sail the murky waters of Loch Ness, alleged lair of the world’s most storied sea monster. Expert commentary and local delights await back at the ship each evening, including whisky tastings and live Scottish music.”

— NATIONAL GEOGRAPHIC TRAVELER’S 50 TOURS OF A LIFETIME



OUR EXPERTS ENSURE PEAK EXPERIENCES IN THIS HISTORIC & WILD LAND

Our experts will weave a compelling narrative of Scottish life and times, and turn what would merely be breathtaking sights into living history. You'll be accompanied throughout by an Expedition Leader, expert Lindblad Expedition staff members, and a Lindblad-National Geographic certified photo instructor. Rely on their expertise to ensure you get the most out of your time in Scotland.

EXPEDITION LEADERS:

DAVID BARNES

A fellow of the Royal Historical Society, David Barnes has published extensively on the history and topography of the British Isles.

CAROL KNOTT

A resident of the Outer Hebrides since 1988, Carol Knott is an authority on the history and archaeology of Scotland's remote communities and offshore islands.

STEVE BLAMIRE

An authority on Celtic, Viking, and Inuit cultures, Steve has represented the Celtic peoples at the Parliament of the World's Religions and authored several books on Celtic cultures.

▶ PLEASE VISIT [EXPEDITIONS.COM/EXPERTBIOS](https://www.lindblad.com/expeditions.com/expertbios) AND SELECT YOUR ITINERARY TO LEARN WHICH STAFF IS TRAVELING ON YOUR DEPARTURE



ABOARD & AT YOUR SERVICE— A LINDBLAD-NATIONAL GEOGRAPHIC CERTIFIED PHOTO INSTRUCTOR

Scotland offers some of the most picturesque photo ops in the world. And since this itinerary encompasses the seldom-seen as well as the iconic, you'll want to capture the memories. The Lindblad-National Geographic certified photo instructor aboard every departure is specially trained to assist you with camera settings, the basic elements of framing, composition, and lighting, and to provide timely photography tips. They're able to help you discover and capture the romance of the places you explore. Whether you think of yourself as a photographer, or simply find yourself caught up in the fun of making images, whether you use a state-of-the-art camera or a smartphone, you'll hone skills that will last a lifetime, and return home with the best shots of your life.

ELLA POTTS Naturalist

A trained marine mammal medic and cetacean specialist, Ella has lent her expertise to several critical marine conservation organizations like ORCA and the Hebridean Whale and Dolphin Trust.

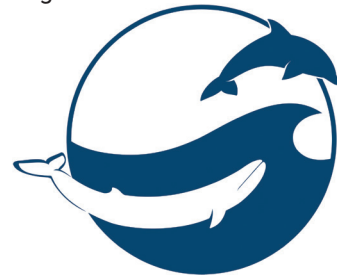
LAUREN BUCHHOLZ Naturalist/ Lindblad-National Geographic Photo Instructor

Lauren's passion for conservation has taken her from the Appalachians to the Rockies to the Southern Alps. An early career naturalist, she has been published in *Outdoor Photographer* and *Landscape Photography Magazine*.



GAIN INSIDE PERSPECTIVE ON ISLAND MARINE LIFE

The pristine waters around the islands of the Hebrides are some of the best for spotting whales and dolphins. We've developed a special relationship with the **Hebridean Whale & Dolphin Trust**, a marine conservation charity working to protect the region's abundant cetacean population. Learn about their latest projects from staff members who will come aboard.







ITINERARY

SCOTLAND'S HIGHLANDS AND ISLANDS

9 DAYS—ABOARD *LORD OF THE GLENS*

PRICING: Cat. 1 from \$9,250

Visit expeditions.com for all categories, current rates, and details.

On a voyage through Scotland's famed lochs, the Caledonian Canal, and the Inner Hebrides aboard *Lord of the Glens*, experience evocative landscapes dotted with medieval castles and churches. Trace Scotland's compelling history as you walk among ancient stone monuments, weave your way through ruins of fantastic castles, and stroll through a sacred abbey. Spend evenings enjoying enchanting live music from local musicians on board and taste the very tang of Scotland in the oak and peat of the country's acclaimed single malts during a whisky tasting. Cruise Loch Ness, descend through the intricate lock system of Neptune's Staircase, and explore serene hills and harbor villages on the picturesque islands of Mull, Iona, Eigg, and Skye.

EXPEDITION HIGHLIGHTS

- ▶ Stroll across the battlefield at Culloden, where Bonnie Prince Charlie was dramatically defeated in 1746.
 - ▶ Hike through stunning scenery on the Isle of Skye, and learn about the tiny communities on the remote islands of Eigg or Rum.
 - ▶ Kayak on picturesque Loch Linnhe running parallel to the West Highland Train Line, and wander through the charming seaside town of Tobermory.
 - ▶ Discover Scotland from the prehistoric Clava Cairns to contemporary communities where traditions live on.
- ▶ Visit expeditions.com/scotland for more details.



DAYS 1 & 2: U.S./INVERNESS,
SCOTLAND/EMBARK

Fly overnight and arrive in Inverness. Board *Lord of the Glens* and settle into your cabin. Gather for a reception, dinner on board, and a performance by junior Scottish dancers. (Day 2: D)

DAY 3: CULLODEN/CLAVA CAIRNS/
LOCH NESS/FORT AUGUSTUS

Visit Culloden, the infamous battlefield where Bonnie Prince Charlie's Jacobite forces were defeated in 1746. See the prehistoric standing stones and passage tombs of Clava Cairns. This afternoon, set sail on the Caledonian Canal and enter Loch Ness, where we'll learn about the legendary monster said to inhabit the loch. Ascend an impressive flight of locks that run through the heart of Fort Augustus to moor at the top of the village. Set out on a hike this evening. (B,L,D)

DAY 4: LAGGAN LOCKS//CORPACH/
GLENFINNAN

Continue along the Caledonian Canal, ascending to 106 feet at Laggan Locks, after gliding along the tree-lined canal known as Laggan

Avenue. Sail onward across picturesque Lochs Oich and Lochy before descending Neptune's Staircase, a set of eight interconnected locks dropping 64 feet to the sea loch at Corpach. From Corpach, drive to Glenfinnan to explore the spectacularly scenic location now famous for Harry Potter, or choose to explore Loch Linnhe by kayak from our moorings in the shadow of Ben Nevis, Britain's highest mountain. (B,L,D)

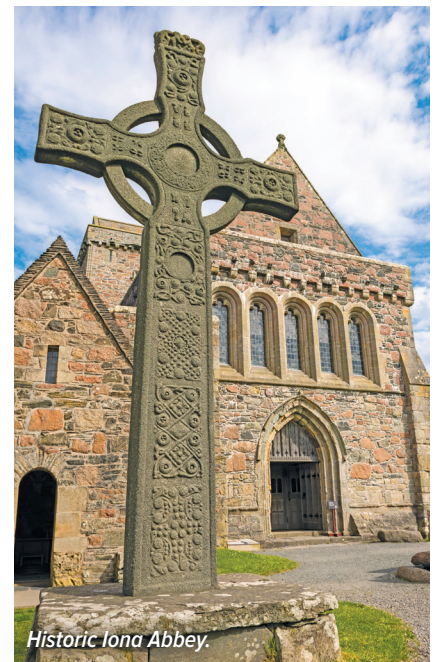
DAY 5: LOCH LINNHE/OBAN

Sail through Loch Linnhe to the town of Oban, set on a picturesque bay on the Firth of Lorn. There is time to explore this lively town on foot, visiting a whisky distillery and McCaig's Folly, a monument on a hill overlooking the town and bay that was inspired by the Roman Colosseum. This evening, we have a whisky tasting onboard ship. (B,L,D)

DAY 6: SOUND OF MULL/IONA/DUART
CASTLE/TOBERMORY

Sail to the Isle of Mull, in the Inner Hebrides. Drive across Mull, then cross to Iona by ferry to explore this picturesque island. Visit the medieval abbey ruins and the rebuilt abbey

church. Stroll through St. Oran's Chapel and the royal graveyard where Scottish kings, including Macbeth, are buried. On Mull, visit Duart Castle, home to Clan MacLean.



Historic Iona Abbey.



We may be lucky enough to see the Jacobite train, which famously served as the Hogwarts Express in the Harry Potter films, steaming across the Glenfinnan Viaduct.

Re-joining our ship, we sail the dramatic Sound of Mull for our overnight berth at the picturesque fishing community of Tobermory. This evening we plan to meet with a member of the Hebridean Whale and Dolphin Trust to learn about their efforts to protect marine mammals in these waters. (B,L,D)

DAY 7: TOBERMORY/ISLE OF EIGG OR ISLE OF RUM (SMALL ISLES)/INVERIE

Sail north to either Eigg or Rum, depending on weather conditions. The islands have populations of fewer than one hundred souls, and teem with wildlife. Look for marine animals, including Atlantic seals, minke whales, basking sharks, harbor porpoises, and a colony of Manx shearwaters. Then sail to the tiny village of Inverie, where you can have a drink at the Old Forge, the most remote pub in the British Isles. (B,L,D)

DAY 8: ISLE OF SKYE/KYLE OF LOCHALSH

Continue north to the Isle of Skye. At the Museum of the Isles, trace the legacy of the 1,300-year-old Clan MacDonald, the Lords of the Isles, who once ruled the west coast of Scotland.

See the ruins of Armadale Castle, ancestral home of the MacDonalds, and take a walk through the beautiful woodlands and gardens. Then sail for Kyle of Lochalsh, where afternoon options include a guided walk or exploration of Eilean Donan Castle. Celebrate your voyage with a Scottish farewell dinner onboard. (B,L,D)

DAY 9: KYLE OF LOCHALSH/ DISEMBARK/INVERNESS/U.S.

Disembark in Kyle of Lochalsh and drive through the highlands to Inverness. Then transfer to the airport for your return flight home. (B)



Eilean Donan Castle.



EXPEDITION DATES

2023 May 28*; Jun. 11*; Jul. 9*, 16, 23*, 30; Aug. 6*, 13, 20*, 27

*These departures travel in reverse.

SPECIAL OFFERS:

We will cover your bar tab and all tips for the crew. Plus, stay connected with complimentary Wi-Fi on board. See page 17.

OPTIONAL EXTENSION

Discover the rich history and vibrant present of **Edinburgh** on a two-day pre- or post-voyage extension. See page 16.



LORD OF THE GLENS

CAPACITY: 48 guests in 25 outside cabins.

REGISTRY: Great Britain. **OVERALL LENGTH:** 150 feet.

PUBLIC AREAS: With exterior teak decks, hardwood finished interiors, and fine fabrics, *Lord of the Glens* offers a stylish and relaxing ambience. The two lounges and two open-air viewing areas are social hubs aboard ship. There is a bar and space to read books from the ship's collection.

MEALS: Served in single seatings with unassigned tables for an informal atmosphere and easy mingling, meals focus on healthy cuisine including fresh Scottish poultry, trout, and other options.

CABINS: Cabins are tasteful, comfortable, and amply sized, with outside views. Most cabins have picture windows (three have two large portholes high in the cabin). Facilities include a private bathroom with shower, individually controlled air-conditioning and heating, television, music system, hair dryer, telephone, safety deposit box, bathrobes, and toiletries.

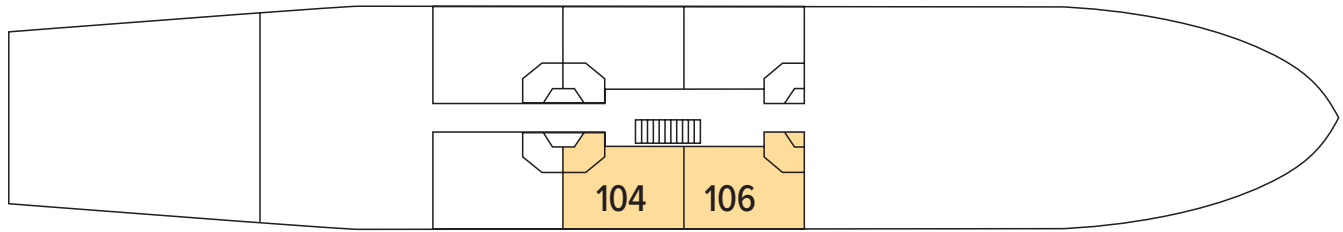
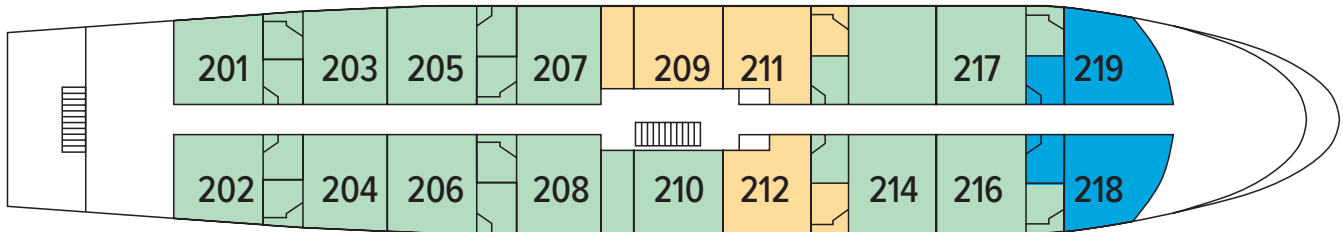
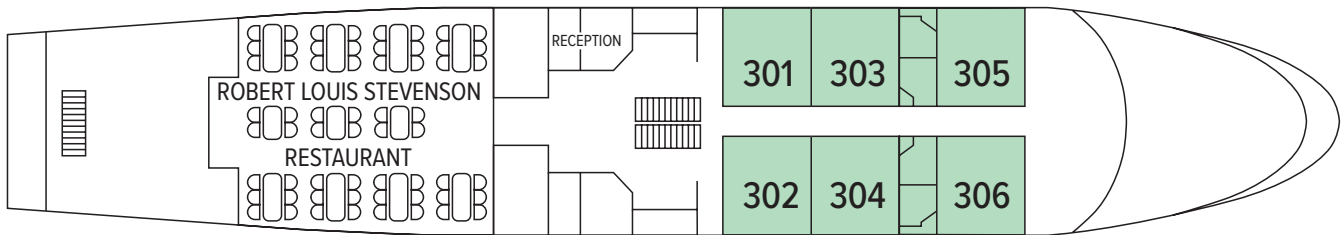
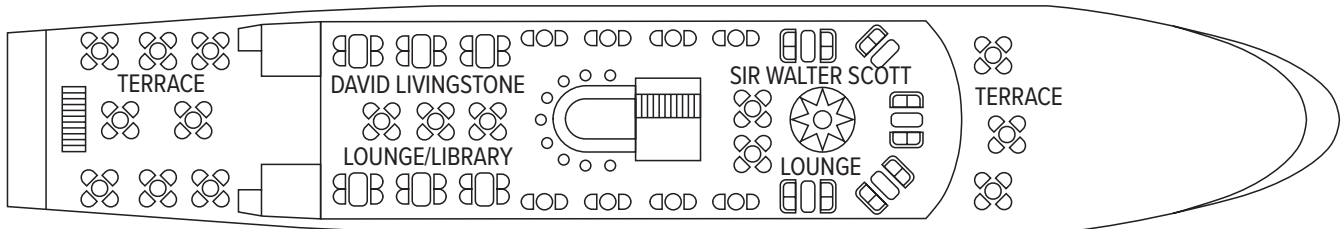
SPECIAL FEATURES: There is complimentary Wi-Fi on board and a computer in the reception area. Bicycles are provided along our route at no additional cost, and weather permitting a kayaking excursion will be offered during the voyage. *Lord of the Glens* is the only ship of its kind able both to navigate the locks of the Caledonian Canal and sail among the islands of the Inner Hebrides. She offers us the unique ability to explore both the Highlands and the fabled Scottish isles.

CATEGORY 1: James Watt Deck #104, 106 (2 single beds, 2 portholes); David Roberts Deck #209 (2 single beds, picture window), #211-212 (1 double bed, picture window).

CATEGORY 2: David Roberts Deck #201-208, 210, 214, 216-217 (2 single beds, picture window); Alexander Graham Bell Deck #301-306 (2 single beds, large picture window).

CATEGORY 2 SOLO: David Roberts Deck Solo Occupancy #218-219 (1 double bed, picture window).

Shared Accommodations: Shares can be arranged at the double occupancy rate in Categories 1 and 2.



SEE & DO MORE:

EXPERIENCE TWO DAYS IN EDINBURGH BEFORE OR AFTER YOUR VOYAGE

FROM ANCIENT CASTLES TO CONTEMPORARY CHARMS



Beautiful, dramatic, old and new: This is Edinburgh. From your base at the Waldorf Astoria Edinburgh—The Caledonian, in the heart of the city, you can visit the ancient Edinburgh Castle and see the Stone of Scone, used for centuries in the coronation of the monarchs of Scotland. Stroll in the footsteps of Scottish royalty along the Royal Mile from the castle and nearby historic houses to the elegant Georgian terraces and crescents of the New Town. Edinburgh's stunning architecture and winding medieval streets will immerse you in both the city's rich history

and vibrant present. In the words of the historian Murdo Macdonald, "Edinburgh is a city that makes you think about what a city should be."

Some further highlights of the itinerary:

- Enjoy peak moments of Scottish culture. Experience the pageantry of the Edinburgh Military Tattoo*, a spectacle of massed pipe and drum bands, Highland dancers, and fiddlers, set against the backdrop of Edinburgh Castle.
- Or, enjoy high tea on *Fingal*, a luxury ship/hotel with peerless appointments and wonderful views of Leith harbor. Originally introduced to Scotland by Mary of Modena (wife of King James VII and II of England) Scottish high tea is sometimes considered by the locals to be "supper" and always features uniquely Scottish fare and flare.
- View Scotland's crown jewels and the Stone of Destiny—recently returned from London after 700 years.
- Linger inside St. Giles Cathedral, where reformer John Knox preached his famously fiery sermons.
- Board the Royal Yacht Britannia, which took members of the Royal Family all over the world.
- Explore further on your own as you wish!

**Note: The Military Tattoo is included on extensions for the following departures: Jul. 30 and all Aug. departures. All other extensions will feature high tea on Fingal.*



SPECIAL OFFERS

BAR TAB, CREW TIPS & WI-FI INCLUDED:

We will cover your bar tab (except super-premium brands of alcohol) and all tips for the crew. Also enjoy free Wi-Fi on board the ship.

TRAVELING AS A GROUP: Save 5% when traveling as a group of eight or more people. Take advantage of these great savings, while enjoying traveling with your friends and family. This savings is applicable to voyage fares only, and is not valid on extensions or airfare. Deposit, final payments, and cancellation policies for group travel vary from our regular policies.

BRINGING THE KIDS: We believe sharing an expedition with your kids or grandkids is a life-enhancing experience. Take \$500 off for each child under the age of 18 on any departure. This savings is valid for new bookings only, subject to availability, not applicable on extensions, and may not be combined with other offers.

COMBINING OFFERS: Certain offers may be combinable, up to two savings opportunities except where noted otherwise. For example, travel with a group of 8 or more, including kids under 18, and take advantage of both savings!

BE PART OF OUR EXPEDITION COMMUNITY

Join in! Here's how:

- ✓ Like us on Facebook: hear what our travelers have to say, get inspired and chime in: [facebook.com/LindbladExpeditions](https://www.facebook.com/LindbladExpeditions)
- ✓ Preview an expedition before you go or subscribe to our videos on [youtube.com/lindbladexpeditions](https://www.youtube.com/lindbladexpeditions)
- ✓ Follow us @LindbladExp and our founder, Sven Lindblad @SvenLEX, on Twitter; and on Instagram @SOLindblad for his interesting view of the world.



RESERVATION INFORMATION

Terms & Conditions: For complete terms and conditions please visit www.expeditions.com/terms

Pricing: For best pricing book early. Prices quoted in this brochure are valid as of the time of printing, are subject to modification based on select departures and availability at time of booking, and are not guaranteed until booking and required deposit is made. Under normal conditions, the total expedition price is guaranteed at the time of booking. However, our expedition pricing is determined far in advance of initial departure on the basis of then-existing projections of fuel and other costs. In the event of increases in those costs including, but not limited to, increases in the price of fuel, currency fluctuations, increases in government taxes or levies, or increased security costs, we reserve the right to adjust the price of your expedition or add a surcharge to cover such unexpected increases. We will always provide an explanation of the reason for increase in pricing. Visit expeditions.com or call for the most up-to-date pricing.

Pricing Includes: All accommodations aboard ship or in hotels per itinerary or similar; all meals and beverages aboard ship (excluding certain super-premium brands of alcohol); internet access; meals on land as indicated, accompanied by nonalcoholic beverages; shore excursions; sightseeing and entrance fees; special access permits; transfers to and from group flights; use of kayaks and bicycles (where applicable); tips (including gratuities to ship's crew); taxes and service charges; services of a ship physician and services of our expedition staff. Unused services or items included in our programs are non-refundable.

Not Included: Air transportation, extensions, passport, visa, immigration fees, meals not indicated, travel protection plan; items of a personal nature, such as voyage chronicle and laundry.

Airfare: For all programs, airfare is an additional cost unless otherwise indicated. We will gladly assist in making your air arrangements for a \$50 per person service fee.

Reservations: To reserve your place, an advance payment is required at the time of reservation. Receipt of advance payment indicates your acceptance of the terms and conditions. Visit expeditions.com/terms for complete details.

Final Payment: Final payment is due in full 90 days prior to departure. Payment schedules may vary for certain longer voyages due to high demand for these voyages. We reserve the right to cancel your reservation if payment has not been received by final payment due date.

Travel Protection Plan: We strongly recommend that you take advantage of our Travel Protection Plan. This plan offers comprehensive coverage to protect you from cancellation fees, costs incurred due to trip delays/interruption, medical assistance, and damaged or lost baggage, and provides medical assistance and evacuation during your travels. Our Travel Protection Plan is available for U.S. residents only and may be purchased any time prior to final payment due date. If you are not satisfied for any reason, you may return your plan within 10 days after purchase. Your premium will be refunded if canceled within 10 days, provided you have not already departed on the trip or filed a claim. When so returned, the coverage under the plan is void from the original date of purchase.

Responsibility and Other Terms & Conditions: Certain provisions concerning, among other things, limitations of Lindblad Expeditions' and National Geographic Expeditions' (a division of National Geographic Partners, LLC) liability for loss of property, injury, illness, or death during the voyage will be provided to all guests on the ship's ticket sent prior to departure, and are also available on our website at expeditions.com/terms, or upon request. By registering for a trip, the guest agrees to all such terms and conditions.

Note: Itineraries and prices listed in this brochure are as of publication date and are subject to change.

Smoking and Vaping Policy: Smoking and Vaping are allowed only in designated outdoor areas.

Cancellation Policy: Call for details or visit expeditions.com/book-assured.

©2022 Lindblad Expeditions

Lindblad Expeditions and the Eye are the trademarks of Lindblad Expeditions. All rights reserved.

©2022 National Geographic Partners, LLC. All Rights Reserved.

NATIONAL GEOGRAPHIC and the Yellow Border are trademarks of National Geographic Society and used with permission.

Photo Credits: Stewart Aitchison, Alexandra C. Daley-Clark, Ian Dagnall/Alamy, Stephen Emerson/Alamy, Ralph Hammelbacher, Dennis Hardley/Alamy, istock, John Paul Photography, John Peter Photography/Alamy, Eric Kruszewski, LatitudeStock/Alamy, Benny Marty/Alamy, Emily Mount, Michael S. Nolan, Paul White Aerial views/Alamy, Krista Rossow, Shutterstock, Ian Strachan,

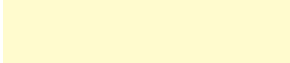
**For Reservations: Contact your travel advisor or Lindblad Expeditions
1.800.EXPEDITION (1.800.397.3348)**

**Reservation Hours: Monday – Friday 9am – 9pm ET
Saturday & Sunday 10am – 5pm ET**

**Lindblad Expeditions, Inc., 96 Morton Street, New York, NY 10014
Phone: 212.261.9000 • Fax: 212.265.3770**

**For additional information and online reservations,
visit us on the Web: www.expeditions.com**

Account Number:



1.800.EXPEDITION | WWW.EXPEDITIONS.COM

♻️ Printed on 10% recycled content paper with soy-based inks. We recommend that you pass this along for others to enjoy or recycle.

LOG-032

SPECIAL OFFER: COMPLIMENTARY BAR TAB, WI-FI & CREW GRATUITIES

