

# EPIC PATAGONIA

## FJORDS, PEAKS & FORESTS

WITH FREE  
AIRFARE



ABOARD NATIONAL GEOGRAPHIC EXPLORER | 2018/19



Lindblad  
Expeditions







Lindblad  
Expeditions



NATIONAL  
GEOGRAPHIC

Lindblad Expeditions and National Geographic have joined forces to further inspire the world through expedition travel. Our collaboration in exploration, research, technology and conservation will provide extraordinary travel experiences and disseminate geographic knowledge around the globe.



DEAR TRAVELER,

Back in 1967 my father, Lars-Eric Lindblad, was among the first to bring adventurous travelers to Patagonia by expedition ship. And since that time, we've added greatly to our knowledge of the region. Our 20-day expedition, **Epic Patagonia: Fjords, Peaks and Forests**, encompasses all the high points of Patagonia—the fjordlands of Chile's sweeping Inside Passage, photogenic Chiloé Island, with its colorful houses built on stilts; Pumalín Natural Park, a vast area preserved thanks to the vision of my friends Kris Tompkins and the late Doug Tompkins; the extraordinary Pio XI Glacier; wild parklands like Karukinka; and iconic Torres del Paine National Park.

Once around Cape Horn we'll call at seldom-seen Staten Island (Isla de los Estados), a stunning, wildlife-rich place long off-limits to outsiders. That we can explore it is the result of dialog we initiated with key conservation officials. They came to believe, as did we, that carefully planned visits by our ships would call attention to the need to conserve the island. And it would provide an extraordinary experience for our guests—the term “seldom-seen” has seldom been more appropriate for this *“Island at the End of the World.”*

Choose to join us in 2018, and you will receive, in addition to an extraordinary experience, an exclusive keepsake with our compliments: National Geographic photographer Kike Calvo's gorgeous book, *Staten Island*. Your copy will be signed by Kike, and shipped to your home prior to your voyage. Better still, Kike will be aboard to help you capture your adventure.

One of the wildest and most beautiful regions of Earth, Patagonia calls to the nature lover and the romantic in all of us. I hope you will choose to experience it with us.

All the best,



Sven-Olof Lindblad



*Unique and stunning, this book captures the island in elegant black & white images. A signed copy is our 'Thank You' for joining this uncommon adventure. See more on pages 16 & 17.*

# PATAGONIA: EVERYTHING, PLUS

*Spanning Chile and Argentina, Patagonia has no precise borders of its own. It includes massive snow-covered Andean peaks, pampas, fjords, glaciers, forests, rivers, lakes, and valleys—inhabited by penguins, boisterous elephant seals, Andean condors, whales and dolphins, guanacos, rheas, and more. See it all on this sweeping voyage.*

**SANTIAGO:** Begin with a sojourn in this gracious, sun-struck city, dramatically backed by the Andes.

**THE CHILEAN FJORDS:** A network of serpentine fjords and channels carved by enormous forces—with mountains rising from the sea, epic waterfalls, and 3,000-year-old *alerce* trees.

**TIERRA DEL FUEGO & KARUKINKA NATURAL PARK:** We have special permission to visit Karukinka Natural Park, donated by Goldman Sachs and administered by the Wildlife Conservation Society. It spans 735,522 acres across the southern edge of Patagonia on the archipelago of Tierra del Fuego—a land visited by both Magellan and Darwin—and includes the world's southernmost old-growth forest, a complex of wetland systems, peat bogs, mountains, alpine meadows, and at least 90 animal species. See more on pages 6-7.

**TORRES DEL PAINE:**  
*Its iconic and spectacular mountain range appears like a fairy castle as you approach across the flat Patagonian steppe—soaring walls crowned by jagged peaks. As we get close the view reveals deep valleys dividing vertical granite horns and fluted towers, carved by the great glaciers of the ice ages.*

—DAVID COTHAN, NATURALIST

See more on page 8.

**PIO XI GLACIER:** Nearly 41 miles in length, it's the longest outside of Antarctica.

**CAPE HORN:** Venture 'round the Horn and join the list of those to navigate these treacherous waters—in safety and comfort.

**STATEN ISLAND:** World famous for Jules Verne's *The Lighthouse at the End of the World*, the hundreds of wrecks and heroic rescues of stranded sailors by legendary Argentinean sailor and explorer Comandante Luis Piedrabuen, plus its abundance of wildlife, wind-shaped forests and deep calm fjords, this area, probably the least visited in the whole of Patagonia, is a must-see. Our guests have the rare opportunity to experience a truly remote and unexplored location, and revel in the feeling of being 'first' during our expedition. See more on pages 4-5.

FROM  
SANTIAGO

CHILE

CHILÓE  
ISLAND

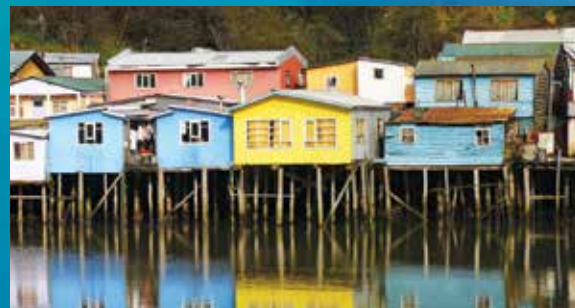


Torres del Paine National Park.



# S EXCLUSIVES, IN ONE VOYAGE

## ARGENTINA



*Chilote architecture.*

*CHILOÉ ISLAND: Chiloé has a special place in the hearts of Chile's people. It's a tranquil place with deeper Native American roots than much of the rest of Chile, where old traditions still hold strong, and which remains close to nature. Its wooden churches collectively constitute a UNESCO World Heritage site, and its architecture is distinctive.*

PIO XI  
GLACIER

THE CHILEAN FJORDS

TORRES  
DEL PAINE

TIERRA DEL FUEGO

STATEN  
ISLAND

CAPE  
HORN



# THE ISLAND AT THE END OF THE WORLD



Isla de los Estados, also known as Staten Island, is so seldom seen that it holds a near-mythic place in the region's collective consciousness. In 2015, ours was the first outside expedition ship granted the privilege to travel here since it was essentially closed off to tourism decades ago. What we discovered on that pioneering voyage exceeded our fondest hopes: an island of exceptional interest with exceptional wildlife.

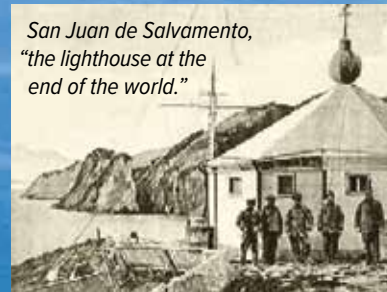
Thousands of seabirds in a number of places. Blue-eyed shags nesting in the tussock grass. Magellanic penguins heading down to the sea to feed. South American fur seals basking on the rocky shoreline, and in the crystal clear waters, South American sea lions swirling through the beautiful kelp beds.

National Geographic Explorer's *pioneering exploration of Staten Island in 2015.*





We are proud to have helped pave the way for accountable, environmentally responsible exploration of the island, and we remain one of the only organizations venturing into this untamed nature reserve. Now, you can discover it as you should—in its pristine state, largely untouched by humankind. Hike through the last stands of forest before the Andes disappear into the Atlantic Ocean, observing the forces of nature evident in the rocks and vegetation, to a knoll overlooking the placid bay where ‘the lighthouse at the end of the world’ stands. Experience sights few others have thus far.



*San Juan de Salvamento, “the lighthouse at the end of the world.”*

### A SIGNED COPY IS YOURS—WITH OUR COMPLIMENTS

*In Staten Island, Kike Calvo takes us on a visual journey to a seldom-seen, remote island in Tierra del Fuego at the southern tip of South America. On the surface, the book is a visual diary of the voyage of the first foreign-flagged ship, the National Geographic Explorer, to visit this area in years.*

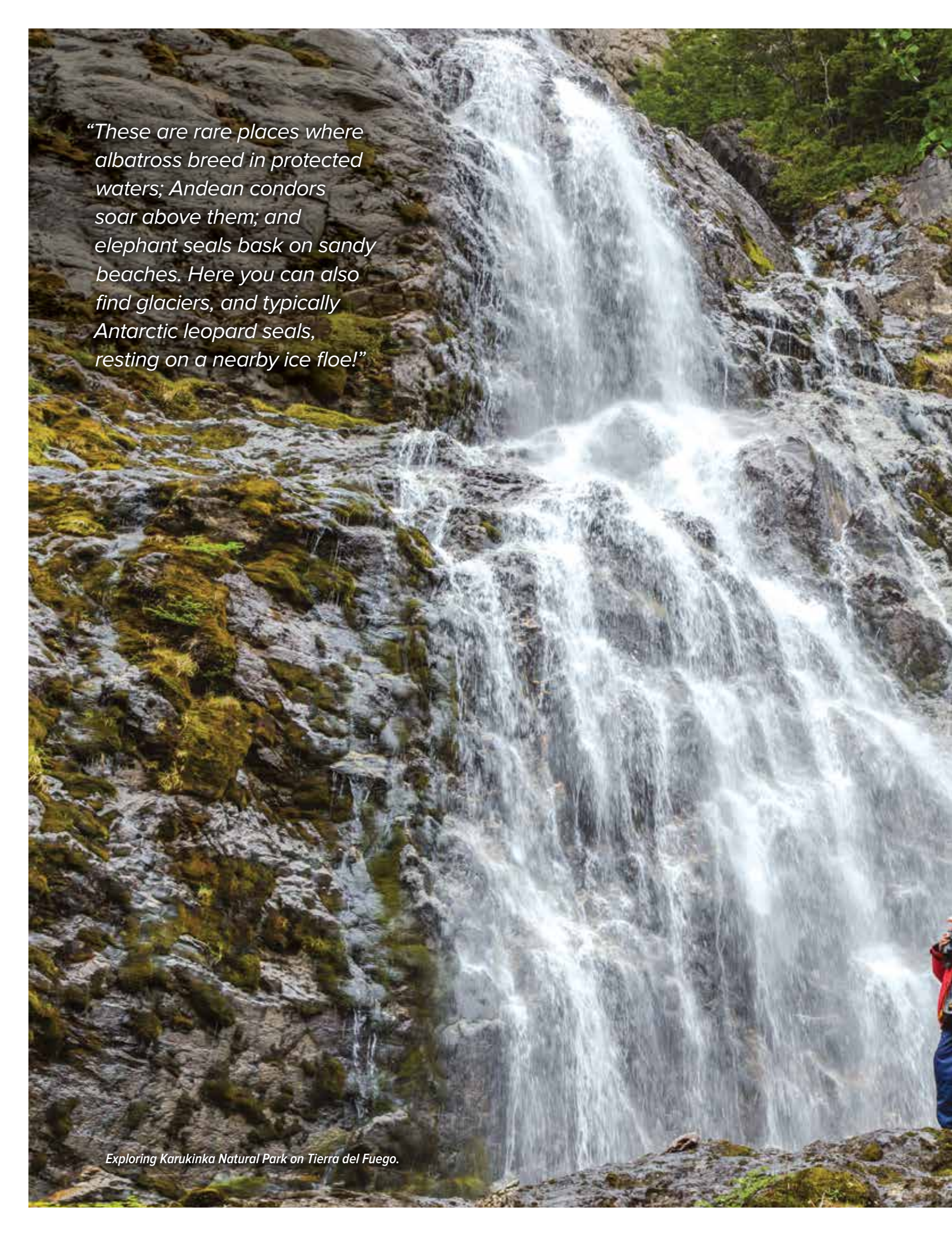
*But this is more than a mere visual diary... Calvo reveals a world of mythic proportions—stunning forests, exotic birds, and towering peaks—a magical place. Any photograph can capture what a place looks like, but it takes an artist with Kike Calvo’s talent and enthusiasm... to capture the spirit of this magical land in this portfolio of gorgeous photography.*

—BOB KRIST, NATIONAL GEOGRAPHIC PHOTOGRAPHER



▶ PREVIEW THE EXPERIENCE AT [EXPEDITIONS.COM/STATEN-IS](https://www.expeditions.com/staten-is)



A large waterfall cascades down a rocky, moss-covered cliffside. The water is white and frothy as it falls over the dark, wet rocks. The surrounding area is lush with green moss and ferns. In the bottom right corner, a person wearing a red jacket and blue pants is partially visible, looking towards the waterfall.

*“These are rare places where albatross breed in protected waters; Andean condors soar above them; and elephant seals bask on sandy beaches. Here you can also find glaciers, and typically Antarctic leopard seals, resting on a nearby ice floe!”*

*Exploring Karukinka Natural Park on Tierra del Fuego.*





# KARUKINKA NATURAL PARK

## NATURALIST SANTIAGO IMBERTI RECAPS THE STORY OF A VOYAGE HIGHLIGHT

*Karukinka Park represents a surprising and positive turn of events for the natural world. A forest that was once set to be destroyed by a timber company was successfully rescued at the last minute when the conservation movement won a huge battle against economic interests to save this massive, southernmost woodland on the planet. When the company went bankrupt, a timely donation from Goldman Sachs to the Wildlife Conservation Society (WCS) created the largest protected tract of forest in Tierra del Fuego, conserving habitats from the depths of the fjords, to the top of the southern Andes, and everything in between. An area that was used by nomads and canoe people for thousands of years, as huge middens still testify, is now preserved for its natural and historical value. These are rare places where albatross breed in protected waters; Andean condors soar above them; and elephant seals bask on sandy beaches.*

*Here you can also find glaciers, and typically Antarctic leopard seals, resting on a nearby ice floe! The juxtaposition of all these incredible elements in one place, against a backdrop of thick, wind-tortured forest and steep fjords is unique. Hiking into the forest reveals smaller yet surprising wonders: carnivorous plants, delicate sub-Antarctic flowers, and endemic hummingbirds and Austral parrots, which seem totally out of place in these southern latitudes.*

*The end of the world is also a place where I found something unexpected. My wife, Melissa, works for the WCS and is in charge of Karukinka. Every time our ship visits, a WCS representative comes on board for a few days to show and tell us about the area. A few years ago, Melissa joined us aboard National Geographic Explorer—fast-forward a bit and last July 4th was the day our baby boy, León, arrived. We are now an Argentinean-Chilean family.*

—SANTIAGO IMBERTI, NATURALIST



*The Imberti-Carmody family:  
Melissa, León, and Santiago.*





# ICONIC LANDSCAPES IN REM

## TORRES DEL PAINE

*One of our guests summed it up best: “I felt like I could reach out and touch the mountains around us. And I felt as though they were reaching out to embrace me!”*

*Torres del Paine National Park seems to compress all the most beautiful and exciting features of the region into a single gem, so accessible you feel you can turn it in the palm of your hand for a closer look at every facet. Its iconic and spectacular mountain range appears like a fairy castle as you approach across the flat Patagonian steppe—soaring walls crowned by jagged peaks. As we get close the view shifts, revealing deep valleys dividing vertical granite horns and fluted towers, carved by the great glaciers of the ice ages. One of the most beautiful mountain ranges on Earth—it’s only the beginning. Our exploration of the park will be richly rewarding, with outstanding views, and options for a long or short hike, bringing you to roaring waterfalls and endless vistas. Big herds of guanacos roam the hills below the mountains; Andean condors soar over the peaks; and little Patagonian red foxes scamper through the brush. Most thrilling of all are the pumas (mountain lions); and this is one of the best places on the planet to see them, with luck—resting on distant ledges observing us as we hike in the southeast part of the park through a beautiful landscape of remarkable sandstone bluffs.*

—DAVID COTHAN, NATURALIST & CERTIFIED PHOTO INSTRUCTOR





# OTE REGIONS

## PUMALÍN NATURAL PARK

Chile's Pumalín Park owes its existence to the dedication of the conservationists Doug and Kris Tompkins, and the commitment of Chile's government and people to protect their natural heritage. The late Doug Tompkins first visited Chile in 1961, and returned repeatedly. In 1991, determined to protect a key area of temperate forest—some of the last remaining in Chile—from logging, he purchased a 42,000-acre ranch in a particularly beautiful region of Patagonia. Over time his foundation added to the total, to create a protected area larger than Yosemite in the United States. Pumalín, as it was named, now stretches from the Pacific coast all the way to the Andes, and encompasses forests, lakes, and mountains. It protects many rare plant and animal species, notably including alerce trees, among the tallest and oldest on Earth. Knowing that the park's long-term survival depended on sustainable use and Chilean commitment, Doug and his wife Kris worked with the Chilean government. And in March 2017, Chile's President Michelle Bachelet formally accepted the gift of Pumalín, to be incorporated into a vast Patagonian national park. We are privileged to be able to explore this extraordinary land.

—RALPH HAMMELBACHER, V.P., EXPEDITION DEVELOPMENT

*Clockwise from upper left: Torres del Paine; you can hike to a powerful waterfall that flows off one of Pumalín's mountains; rhea; if we're very lucky we may even get to see the elusive puma.*





## WITHOUT WILDLIFE, LANDSCAPES ARE MERE SCENERY



Patagonia's remoteness means that pockets of South American wildlife have gone undisturbed for ages. In recent years, forward-thinking conservationists and investors have worked to turn key parts of the region into parklands, ensuring some measure of security for guanacos, Andean condors, Magellanic penguins, and more species.

*Clockwise from top: Guanaco herd in Torres del Paine; Andean condor; Patagonian red fox; South American sea lion; imperial shags.*













## COOL TOOLS ABOARD ENSURE EXTRAORDINARY EXPERIENCES

*National Geographic Explorer* explores Patagonia with a complete array of exploration tools. These tools, a fleet of Zodiacs, kayaks, an ROV for exploring beyond-human depths and more, are designed to maximize your opportunities for up-close, personal adventures. In addition, our generous 1:10 expedition staff-to-guest ratio provides peerless opportunities to experience life-enhancing encounters with the beauty and wildness of a unique region. And, the opportunity to benefit from the inspiring National Geographic photographer aboard, or learn basics from the Lindblad-National Geographic certified photo instructor will add considerably to your Patagonia experience—and the memories you take home.

*Clockwise from upper left: Zodiacs get you out exploring at a moment's notice; a fleet of kayaks allows you to paddle for personal exploration; National Geographic Explorer is equipped with an ROV (Remotely Operated Vehicle) capable of exploring depths up to 1,000 feet, providing footage to view in the dry warmth and comfort of the lounge; guests join staff in examining nautical charts on the bridge; Explorer in the White Narrows in the Chilean fjords.*





*Zodiacs get us out exploring at a moment's notice.*

# TRAVEL IN EXCEPTIONAL COMPANY, SHARE THE ADVENTURE

Comprised of scientists, naturalists, historians, and a veteran expedition leader, the members of our dynamic expedition team are engaging companions. And you'll benefit from their broad array of specialized knowledge—history, archaeology, geology, ornithology, botany, photography, and more. It's their generosity of spirit and insights that make our itineraries uniquely rewarding, transforming events into memorable, life-enhancing experiences.



*Expedition leader Lucho Verdesoto, naturalists Douglas Gualtieri, Santiago Imberti, and Naturalist/Photo Instructor David Cothran.*

▶ VISIT [WWW.EXPEDITIONS.COM/EXPERTBIOS](http://WWW.EXPEDITIONS.COM/EXPERTBIOS) AND SELECT YOUR ITINERARY TO LEARN WHICH STAFF IS TRAVELING ON YOUR DEPARTURE.



# EXPLORE WITH ENGAGING EXPERTS GLOBAL PERSPECTIVES GUEST SPEAKER

Our Global Perspectives Guest Speaker program, available exclusively on *National Geographic Explorer* expeditions, pairs engaging, knowledgeable experts with fascinating geographies to enrich your experience, and add extra levels of perspective and insight to our expedition team's expertise. Taken from the top tiers of world affairs, journalism and exploration, each global speaker has chosen to voyage with us to be part of the expedition community, to go exploring along with our staff and guests, and to provide perspectives to enhance your overall experience. You'll share adventures, drinks, dinner, deck time and activities with these intriguing individuals.

## Carl Safina

Author of seven books, including *Song for the Blue Ocean*, and his most recent, *Beyond Words: What Animals Think and Feel*, Carl is a National Geographic Voice, the founding president of The Safina Center at Stony Brook University, and co-chair of the University's Alan Alda Center for Communicating Science. An Orion Award and MacArthur Prize winner, his work has been featured in *The New York Times*, *National Geographic* and more. Join Carl in Oct. 2018.

*"Our deepest insight into the living world: all life is one. Their cells are our cells, their body is our body, their skeleton our skeleton, their heart, lungs, blood, ours. If we impose that distinctly human understanding, we've taken one giant step in seeing, truly, each species within the vast living venture."*

—CARL SAFINA, *BEYOND WORDS: WHAT ANIMALS THINK AND FEEL*



▶ LEARN MORE AT [WWW.EXPEDITIONS.COM/EXPERTBIOS](http://WWW.EXPEDITIONS.COM/EXPERTBIOS)



# CAPTURE THE ADVENTURE—



There will be countless reasons to 'aim & create' in Patagonia. Chilotan architecture, beloved by Chileans, including UNESCO World Heritage site churches. Andean

condors drifting on the thermals. The towering *alerce* trees, and the granite spires of Torres del Paine. And whether you consider yourself a photographer or not, we're certain you'll come home with photos you'll be proud to share.

Ships in the Lindblad-National Geographic fleet are the only expedition ships exploring Patagonia with National Geographic photographers aboard every departure. These photographers have inspired countless professionals and amateurs alike, and accompany our ships to inspire and assist you. They are flanked by Lindblad-National Geographic certified photo instructors, naturalists trained by National Geographic photographers to assist you with your camera settings, the basics of composition, observation, and more.



*National Geographic photographer Kike Calvo knows how to make the most of Patagonia's amazing light, as your complimentary book of his Staten Island photography shows. You'll enjoy his company, and learn a lot, whether you think of yourself as a photographer or not. Join Kike in Oct. 2018.*



Smart gear recommendations. Stellar shipping and customer service. The latest in gear to try out on location. These and more reasons are why Lindblad Expeditions-National Geographic has teamed up with renowned retailer B&H Photo Video for our Expedition Photography program. Check out teaching videos from our 4-day

photography event with B&H at [www.optic2017.com](http://www.optic2017.com). As a guest, be sure to access special gear recommendations and packages. Call an expedition specialist for more details.

▶ LEARN MORE AT [WWW.EXPEDITIONS.COM/PHOTO](http://WWW.EXPEDITIONS.COM/PHOTO)





# TAKE GREAT PHOTOS



*Exploring one of Chile's myriad fjords, with the Andes as a backdrop.*





*Hotel Manager Patrik Svärmyr welcomes you aboard National Geographic Explorer.*

## EXCEPTIONAL HOTEL STAFF



### CHILEAN WINE TASTINGS AT SEA

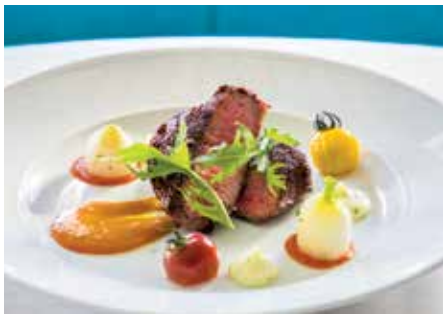
*Chilean vintners are producing world-class wines, and you'll have an opportunity to learn about and enjoy them. An expert in Chilean varietals will be aboard to guide your introduction to the best of the current vintages.*

*National Geographic Explorer has an appetite for adventure, as well as dining excellence. Serge Dansereau, the head chef and owner of the iconic Bathers' Pavilion Café in Sydney, Australia, is a multi-award winning chef, renowned*



*internationally, and considered 'the father of the fresh food movement.' He designs the menus and trains the staff aboard both *National Geographic Explorer* and *National Geographic Orion*. His menu concepts are brought to life daily by each ship's Executive Chef. Count on them to keep your expeditionary spirit fed, so to speak, and for daily diversity and regional flavors.*

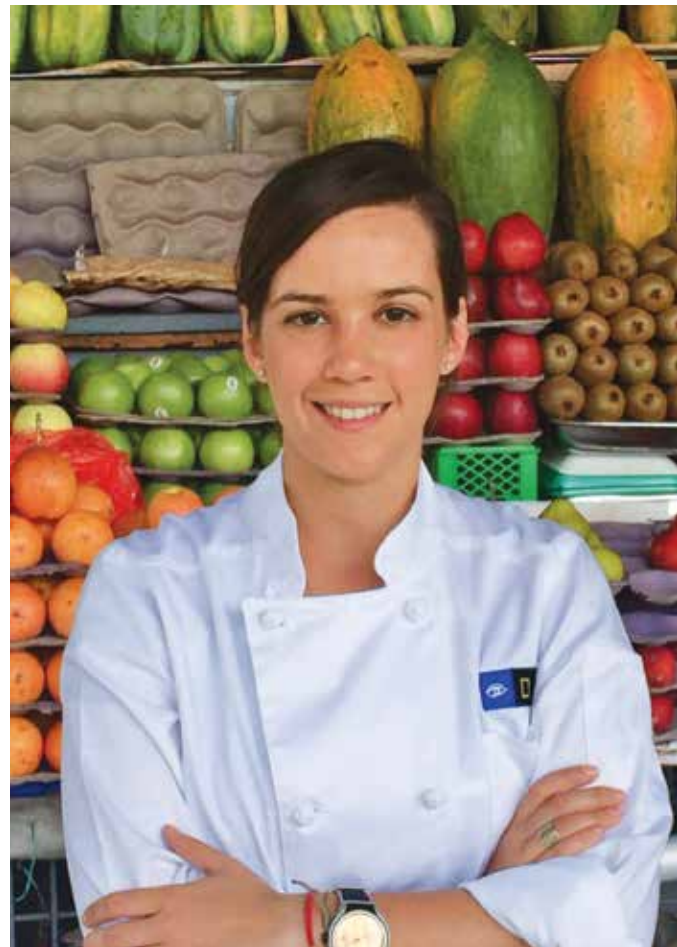




*The lounge and bar (shown here) are the hub of social life aboard. The dining room is inviting and informal. No assigned seating makes for easy mingling with congenial fellow guests, expedition staffers, and special guests. Breakfast and lunches are often buffet-style; dinners are artfully plated and served. Save room for dessert—extraordinary daily!*

*“Discovering sustainable local growers and fisheries on our itineraries to ensure that our guests “taste” the regions they’re exploring is rewarding work. We provision for Patagonia in Chile and Argentina with fresh produce and sustainably produced meat and poultry. Unlike cruise companies which mandate a food program across the fleet, our chefs have the freedom to execute Serge’s smartly conceived dishes while taking advantage of what’s at hand. When a local fishing boat hails our ship with line-caught fish, for example, the chef can say yes! Our goal is for our guests to experience the geography through the food served aboard wherever possible. And to always dine extraordinarily well.”*

—Ana Esteves, Manager Hotel Operations, Lindblad Expeditions





# EPIC PATAGONIA: FJORDS, PEAKS AND FORESTS

20 DAYS/17 NIGHTS—ABOARD *NATIONAL GEOGRAPHIC EXPLORER*

PRICES FROM: \$18,990 to \$30,990 (See page 23 for complete prices.)

Venture deep into Chile's glorious fjords past incandescent icebergs and massive glaciers. From the "land of fire," Tierra del Fuego, to the jagged spires of Torres del Paine National Park, have a comprehensive Patagonia experience at close range aboard *National Geographic Explorer*. Plus enjoy the unprecedented opportunity to visit Argentina's Staten Island—*Explorer* is one of the only ships ever permitted to visit this unique wild habitat since its recent designation by Argentina as a provincial reserve. And we also enjoy Zodiac cruising at Observatory Island, a huge bird and marine mammal breeding colony.

## EXPEDITION HIGHLIGHTS

- ▶ Beginning at the northern gateway to Patagonia, Puerto Montt, explore the Chilean fjords by Zodiac, kayak and on foot.
- ▶ Explore Patagonia's signature Torres del Paine National Park, with our naturalists.
- ▶ Venture through wildlife reserves not easily accessible to the public, including Karukinka Natural Park in Tierra del Fuego.
- ▶ By special permission, be one of the few people ever to explore Isla de los Estados (Staten Island), located at the extreme end of South America.
- ▶ Transit the legendary Beagle Channel and take in the view of Cape Horn.

## EXPERIENCE & EXPERTISE



Our experienced expedition leader and team of naturalists are your conduit to an extraordinary experience.

And the National Geographic photographer and Lindblad-National Geographic certified photo instructor on board, ours exclusively, are key to capturing the incredible wildlife. Our video chronicler will record the entire voyage. The undersea specialist will reveal the deep, while our wellness specialist helps you feel the "tonic of wildness." And a Global Perspectives guest speaker adds relevant insight.

*Visit our website to read staff and guest speaker bios for this expedition.*



*The Bernal Glacier and the freshwater lake at its terminus.*



## DAYS 1 AND 2: U.S./SANTIAGO, CHILE

Fly overnight to Santiago, and check in to the Hotel Santiago by Mandarin. The Andes form an inspiring backdrop to our guided overview. (Day 2: L)

## DAY 3: PUERTO MONTT/EMBARK

Fly from Santiago to Puerto Montt, Chile's northern gateway to Patagonia. Embark *National Geographic Explorer*. (B,L,D)

## DAY 4: ANCUD (CHILOÉ ISLAND)

Explore Chiloé's culture including its *palafitos*, colorful stilt houses along the water. Alternatively, visit a penguin colony. (B,L,D)



Colorful architecture, Chiloe Island.

## DAY 5: PUMALÍN NATIONAL PARK

Pumalín's 750,000 acres in Chilean Patagonia are protected as one of the last remaining areas of the unusual *alerce* forest, consisting of huge trees similar in size to California redwoods. Walk the park trails to see them up close. (B,L,D)

## DAYS 6-10: THE INSIDE PASSAGE & THE CHILEAN FJORDS

A vast area of snowcapped mountains, glaciers, thousands of islands, lakes, soaring granite walls, and waterfalls, the archipelago is virtually untouched by man. We make good use of our Zodiacs, kayaks and undersea technology. One highlight is the Pio XI Glacier, the longest glacier in the Southern Hemisphere outside Antarctica. Be on deck to look for condors as our ship transits the White Narrows. (B,L,D)

## DAY 11: PUERTO NATALES/TORRES DEL PAINE NATIONAL PARK

From Puerto Natales, drive to monumental Torres del Paine National Park, a UNESCO Biosphere reserve. Discover spectacular and wildlife-rich areas, covering 450,000 acres of glaciers, forests and grasslands, rivers and colorful lagoons. (B,L,D)

## DAYS 12 AND 13: EXPLORING TIERRA DEL FUEGO/KARUKINKA NATURAL PARK

Tierra del Fuego is one of Patagonia's crown jewels. We have special permission from the Wildlife Conservation Society to visit Karukinka Natural Park, home to nesting black-browed albatross, condors, and elephant seals. (B,L,D)

## DAY 14: THE CHILEAN FJORDS, BEAGLE CHANNEL & EXPLORING

Myriad fjords or *senos* indent the coast. We cruise deep into the *senos*, punctuated at the end by tidewater glaciers, to explore by Zodiac, kayak, and on foot. Transit the Beagle Channel and explore some of its many possibilities. (B,L,D)

## DAY 15: CAPE HORN

Today we visit Cape Horn, the southernmost tip of the continent, and, weather permitting, land there for panoramic views. (B,L,D)

## DAYS 16-18: ISLA DE LOS ESTADOS (STATEN ISLAND), ARGENTINA

By special permission, *Explorer* will be one of the only expedition ships ever to visit extraordinary Staten Island. Its mountainous, forested landscapes and rugged fjords are beautiful. Spot southern rockhopper and Magellanic penguins, fur seals and sea lions. See the San Juan de Salvamento "lighthouse at the end of the world," which inspired Jules Verne's novel by the same name. (B,L,D)

## DAYS 19 AND 20: USHUAIA/ DISEMBARK/BUENOS AIRES/U.S.

Disembark in Ushuaia. Take a charter flight to Buenos Aires and connect to your overnight flight home. (Day 19: B,L)



## EXPEDITION DETAILS

DATE: 2018 Oct. 6; 2019 Oct. 7

### SPECIAL OFFERS:

Book the 2018 voyage by **Mar. 31, 2018** for **FREE ROUND-TRIP** economy airfare Miami/Santiago, Buenos Aires/Miami, and internal flights Santiago/Puerto Montt, Ushuaia/Buenos Aires. Plus, we will cover your bar tab and tips to the crew.

### OPTIONAL EXTENSIONS

Add a two-day pre-voyage [Santiago](#) extension, a three-day post-voyage extension to [Iguazú Falls](#), or a four-day post-voyage extension to [Easter Island](#). Visit our website for details.



Magellanic penguins.





## NATIONAL GEOGRAPHIC EXPLORER

**CAPACITY:** 148 guests in 81 outside cabins.

**REGISTRY:** Bahamas. **OVERALL LENGTH:** 367 feet.

*National Geographic Explorer* is a state-of-the-art expedition ship, and the flagship of the Lindblad fleet. It is a fully stabilized, ice-class vessel, with an Ice-1A Super on the forward hull. It carries kayaks and a fleet of Zodiac landing craft. An undersea specialist operates a remotely operated vehicle (ROV) and sophisticated video equipment, extending access to the underwater world.

**PUBLIC AREAS:** Bistro bar; chart room; restaurant; global gallery; library, lounge with full service bar and state-of-the-art facilities for films, slideshows and presentations; mudroom with lockers for expedition gear, and observation lounge. Our “open bridge” provides guests an opportunity to meet our officers and captain and learn about navigation.

**MEALS:** Served in single seatings with unassigned tables for an informal atmosphere and easy mingling. Menu is international with local flair.

**CATEGORY 1:** Main Deck with one or two portholes #301-308

**CATEGORY 2:** Main Deck with window #317-320, 335-336

**CATEGORY 3:** Main Deck with window #313-316, 321-328, 337-340, 342, 344, 346, 348, 350

**CATEGORY 4:** Upper and Veranda Decks with window #103-104, 107-108, 201-202, 204-207, 210, 212, 217, 226, 228

**CATEGORY 5:** Upper Deck with balcony #209, 211, 214, 216, 218, 220-222, 224

**CATEGORY 6:** Veranda Deck–Suite #101-102; Upper Deck–Suite with balcony #213

**CATEGORY 7:** Upper Deck–Suite with balcony #215, 219, 230

**CABINS:** All cabins face outside with windows or portholes, private facilities and climate controls. Some cabins have balconies. Cabins are equipped with Ethernet and Wi-Fi connections and USB ports for mobile devices.

**EXPEDITION EQUIPMENT:** Zodiac landing craft, kayaks, Remotely Operated Vehicle (ROV), hydrophone, splashcam, underwater video camera, crow’s nest remote controlled camera and video microscope.

**SPECIAL FEATURES:** A full-time doctor, undersea specialist, Global Perspectives guest speaker, National Geographic photographer, Lindblad-National Geographic certified photo instructor and video chronicler, internet café and laundry.

**WELLNESS:** The vessel is staffed by a wellness specialist and features a glass-enclosed fitness center, outdoor stretching area, LEXspa treatment room and sauna.

**CATEGORY A SOLO:** Main Deck with window #309-312, 329-334

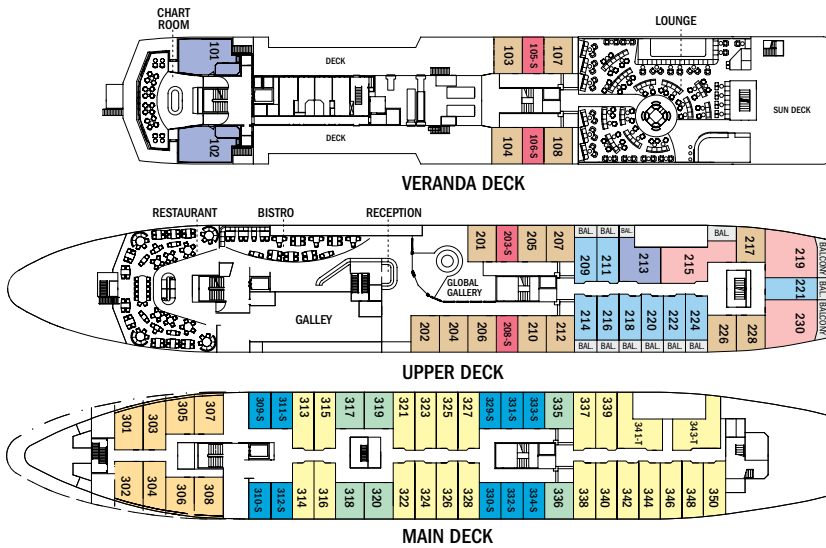
**CATEGORY B SOLO:** Upper and Veranda Decks with window #105-106, 203, 208

**CATEGORY 3 TRIPLE:** Main Deck with window #341, 343

**SHARED ACCOMMODATIONS:** Available in Categories 1 and 2.

**NOTE:** Cabins #209, 211, 214, 216-218, 220, 222, 224, 226, 228, 303-306—These cabins have one queen-sized bed. All other double cabins have two lower single beds; some can convert to a queen-sized bed. Note: Sole occupancy cabins available in Categories A and B. Third person rates are available in the designated triple occupancy cabins at one-half the double occupancy rate. Cabins #341, 343, 101, 102, 215, 219, and 230 can accommodate a third person.





▶ TAKE A VIRTUAL TOUR AT [WWW.EXPEDITIONS.COM/NGEXPLORER](http://WWW.EXPEDITIONS.COM/NGEXPLORER)

Above: Upper deck balcony cabin; evening recap in the lounge; Suite balcony; suite cabin; solo cabin; standard bathroom.

Prices are per person, double occupancy unless indicated as solo.

ITINERARY	YEAR	CAT. 1	CAT. 2	CAT. 3	CAT. 4	CAT. 5	CAT. 6	CAT. 7	CAT. A SOLO	CAT. B SOLO	ADVANCE PAYMENT	NOTE
Epic Patagonia: Fjords, Peaks and Forests—Page 21	2018	\$18,990	\$20,420	\$21,250	\$22,520	\$26,630	\$30,990	\$35,500	\$25,520	\$26,560	\$2,500	Includes one hotel night in Santiago. Immigration fees are not included. Sample Airfares: Miami/Santiago, Buenos Aires/Miami: Economy from \$1,000; Business from \$3,050. Internal airfare from \$805 (Santiago/Puerto Montt, Ushuaia/Buenos Aires).
	2019	Please call for 2019 pricing.										



# TAKE ADVANTAGE OF OUR SPECIAL OFFERS

**FREE AIRFARE—BOOK BY MAR. 31, 2018:** Reserve your place on the Oct. 6, 2018 departure to receive free airfare. Airfare is based on round-trip economy group flights from Miami/Santiago and Buenos Aires/Miami, PLUS internal flights Santiago/Puerto Montt and Ushuaia/Buenos Aires. Airfare is subject to availability at time of booking and must be ticketed by Lindblad Expeditions. In the event that Lindblad's group flights are no longer available at time of booking, we reserve the right to issue a credit. All offers are valid for new bookings only, and may not be combined with other offers and pre- and post-extensions. Call for details.

**COMPLIMENTARY BAR TAB & CREW GRATUITIES:** We will cover your crew gratuities and shipboard bar tab (excepting certain super-premium brands of alcohol.)

**TRAVELING AS A GROUP:** Save 5% when traveling as a group of 8 or more people. Take advantage of this great saving, while enjoying traveling with your friends and family. This saving is applicable to voyage fares only, and is not valid on extensions or airfare. Deposit, final payments, and cancellation policies for group travel

vary from our regular policies.

**BRINGING THE KIDS:** We believe sharing an expedition with your kids or grandkids is a life-enhancing experience. So, take \$500 off for each child under the age of 18.

**BACK-TO-BACK SAVINGS:** Save 10% on any consecutive journeys taken aboard *National Geographic Explorer*. This saving is applicable on voyage fares only, and is not valid on extensions or airfare.

**COMBINING OFFERS:** Certain offers may be combinable, up to two savings opportunities except where noted otherwise. For example, travel with a group of 8 or more on back-to-back expeditions, and take advantage of both savings!

**WITH OUR COMPLIMENTS:**

Guests aboard the 2018 expedition will receive a signed copy of National Geographic photographer Kike Calvo's stunning photo book, *Staten Island*.



## INCLUSIVE PRICING

We include just about everything you have the opportunity to do as part of your expedition aboard ship and ashore. The only things not included are those of a personal nature—internet usage, wellness treatments and other specialized arrangements.

### ABOARD SHIP

- ✓ All meals and beverages (excepting certain super-premium brands of alcohol)
- ✓ Cappuccinos, lattes & complimentary refillable water bottle
- ✓ 24-hour coffee, tea & soda on demand
- ✓ Hors d'oeuvres & snacks during lounge recap; teatime with pastries
- ✓ Sauna
- ✓ Fitness center
- ✓ Fully stocked library
- ✓ Mac computers for downloading your camera's memory card & internet access
- ✓ Access to the B+H Photo locker with the latest gear to try out on loan
- ✓ The guidance and company of our expedition staff
- ✓ Complimentary gratuities to the crew

### ASHORE

- ✓ Meals on land, as indicated in itinerary, and non-alcoholic beverages with meals
- ✓ Special access permits, park fees, port taxes
- ✓ Transfers to and from group flights
- ✓ One night hotel accommodation at the excellent Hotel Santiago by Mandarin in Santiago
- ✓ Guided overview in Santiago
- ✓ The expertise of our expedition staff

### ACTIVITIES

- ✓ All excursions
- ✓ Zodiac & kayak explorations
- ✓ Lectures & presentations in the lounge

## LOG ON TO EXPEDITIONS.COM

Find everything you need to dream, research or plan travel to 40+ destinations worldwide.

### Be part of our expedition community Join in! Here's how:

- ▶ Check our daily blog: [expeditions.com/blog](http://expeditions.com/blog)
- ▶ Like us on Facebook: get inspired and chime in: [facebook.com/LindbladExpeditions](https://facebook.com/LindbladExpeditions)
- ▶ Subscribe to our videos on [youtube.com/lindbladexpeditions](https://youtube.com/lindbladexpeditions)
- ▶ Follow [@LindbladEXP](https://twitter.com/LindbladEXP) on Instagram and Twitter, and find Sven Lindblad on Instagram at [@SOLindblad](https://twitter.com/SOLindblad).





## RESERVATION INFORMATION

**Costs Include:** All accommodations aboard ship or in hotels per itinerary or similar, all meals and beverages aboard ship (excepting certain super-premium brands of alcohol), meals on land as indicated accompanied by non-alcoholic beverages, air transportation where indicated as included, shore excursions, sightseeing and entrance fees, special access permits, transfers to and from group flights, use of kayaks, tips (including gratuities to ship's crew), taxes and service charges, services of a ship physician and services of our expedition staff.

**Not Included:** Air transportation (except where shown as included), extensions, passport, visa, immigration fees, meals not indicated, travel protection plan, items of a personal nature, such as e-mail, voyage DVD, laundry.

**Airfare:** For all programs, airfare is an additional cost unless otherwise indicated. Sample airfares are subject to change. We will gladly assist in making your air arrangements for a \$50 per person service fee.

### TERMS & CONDITIONS

**Reservations:** To reserve your place, an advance payment is required at the time of reservation. The per-person advance payment amount is: \$2,500 for the 20-day voyage. Payment is accepted by Visa, MasterCard, American Express, Discover, or by check.

Receipt of your initial payment indicates your acceptance of our complete Terms and Conditions. We require written notice at the time of reservation for any physical condition, diet, or treatment requiring special attention.

Once your reservation is confirmed, we urge you to use your personalized online account for important information to help you prepare for your voyage. Managing your documents online will facilitate fast and accurate communication, and allow you to provide us with pertinent details we require, in order to complete your reservation. Your online account gives you access to your Expedition Guide, which includes valuable information specific to your voyage. You can also use your online account to make easy payments, view recommended flights and reading material, packing list, and more.

**Final Payment:** Final payment is due 120 days prior to departure. Payment schedules may vary for certain longer voyages, due to high demand for these voyages. We reserve the right to cancel your reservation if payment has not been received by final payment due date.

**Travel Protection Plan:** We strongly recommend that you take advantage of our Travel Protection Plan. This plan offers comprehensive coverage to protect you from cancellation fees, costs incurred due to trip delays/interruption, medical assistance, and damaged or lost baggage, and provides medical assistance and evacuation during your travels. Our Travel Protection Plan is available for U.S. and Canadian residents only, and may be purchased any time prior to final payment due date. Travel Protection premiums are non-refundable once plan is purchased.

**Smoking Policy:** Smoking is allowed only in designated outdoor areas.

**Responsibility and Other Terms & Conditions:** Certain other provisions concerning, among other things, limitations of Lindblad Expeditions' and the National Geographic Society's liability for loss of property, injury, illness or death during the voyage will be provided to all guests on the ship's ticket sent prior to departure, and are also available on our website at [www.expeditions.com/terms](http://www.expeditions.com/terms), or upon request. By registering for a trip, the guest agrees to all such terms and conditions.

**Note:** Itineraries and prices listed in this brochure are valid as of publication date, and are subject to change. Under normal conditions, the total expedition cost is guaranteed at the time of booking. However, the published price is determined far in advance of initial departure on the basis of then-existing projections of fuel and other costs. In the event we determine that current costs create an unsustainable financial model, including but not limited to increases in the price of fuel, currency fluctuations, increases in government taxes or levies, or increased security costs, we reserve the right to pass on these costs to you, to cover such unexpected increases. We will always provide a transparent accounting of the reason for such an increase in costs.

### CANCELLATION POLICY

Number of Days Prior to Expedition Start	Per Person Cancellation Fee
180 or more days	\$750*
179–120 days	Advance payment cost
119–90 days	25% of trip cost
89–60 days	50% of trip cost
59–0 days	No refund

\*\$750 will be rewarded in the form of a Lindblad Expeditions Travel Certificate.

This cancellation policy applies to expeditions as well as pre- or post-extensions, and all other additional services.

The effective date of a cancellation will be the date on which your cancellation notice is received. Note: Airline cancellation policies vary by carrier, as well as the type of fare used to issue your ticket.

Any revisions you make within the cancellation penalty period, such as departure date or choice of voyage, are subject to cancellation fees.

Cancellation policy for certain longer voyages and Holiday departures may vary due to high demand for these voyages. Our Group cancellation policies are listed in the Terms and Conditions section of our website, or you may call us for details. We stress the importance of purchasing a travel protection plan to protect yourself from fees in the event you need to cancel your reservation.

### United States Tour Operators Association \$1 Million Travelers Assistance Program



Lindblad Expeditions, as an Active Member

of USTOA, is required to post \$1 Million with USTOA to be used to reimburse, in accordance with the terms and conditions of the USTOA \$1 Million Travelers Assistance Program, the advance payments of Lindblad Expeditions customers in the unlikely event of Lindblad Expeditions bankruptcy, insolvency or cessation of business. Further, you should understand that the \$1 Million posted by Lindblad Expeditions may be sufficient to provide only a partial recovery of the advance payments received by Lindblad Expeditions. More details of the USTOA Travelers Assistance Program may be obtained by writing to USTOA at 345 Seventh Avenue, Suite 1801, New York, New York 10001, or by email to [information@ustoa.com](mailto:information@ustoa.com) or by visiting their website at [www.USTOA.com](http://www.USTOA.com).

We are proud to be a Founding Member of Adventure Collection—a family of the world's most trusted and experienced active travel companies. Each member company of Adventure Collection is dedicated to enriching the lives of its guests and to giving back to the areas in which it travels. For more information visit [www.AdventureCollection.com](http://www.AdventureCollection.com).



©2017 Lindblad Expeditions

Lindblad Expeditions and the Eye are the trademarks of Lindblad Expeditions. All rights reserved.

NATIONAL GEOGRAPHIC and the Yellow Border are the trademarks of the National Geographic Society. All rights reserved.

Photo Credits: Alyssa Adler, Alamy, Kike Calvo, Stewart Cohen, David Cothran, Jack Dykinga/Nature Picture Library/Alamy, Eric Guth, Ralph Lee Hopkins, Santiago Imberti, Inge Johnsson/Alamy, Michael Krabs, Jeff Mauritzen, Michael S. Nolan, Patricia Paladines, Marco Ricca, Gabriel Rojo/Nature Picture Library, Kseniya Ragozina/Alamy, Shutterstock, Wikimedia Commons.

**For Reservations:**  
**Contact your travel advisor or Lindblad Expeditions**  
**1.800.EXPEDITION (1.800.397.3348)**  
**Reservation Hours: Monday – Friday 9am – 8pm ET**  
**Saturday & Sunday 10am – 5pm ET**

**Lindblad Expeditions, Inc., 96 Morton Street, New York, NY 10014**  
**Phone: 212.261.9000 • Fax: 212.265.3770**

**email: [explore@expeditions.com](mailto:explore@expeditions.com) For additional information and online reservations, visit us on the Web: [www.expeditions.com](http://www.expeditions.com)**





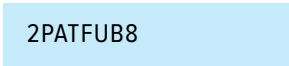
96 Morton Street  
New York, NY 10014

PRSR STD  
U.S. POSTAGE  
PAID  
LINDBLAD  
EXPEDITIONS

Account Number:



Expedition Code:



## 1.800.EXPEDITION | WWW.EXPEDITIONS.COM

♻️ Printed on 10% recycled content paper with soy-based inks. We recommend that you pass this along for others to enjoy or recycle.

PAT-118

### OCT. 6, 2018 VOYAGE | ENJOY COMPLIMENTARY ROUNDTRIP AIRFARE

#### SELECTED HONORS & AWARDS

- » Condé Nast Traveler’s Readers’ Choice Award—Top Small Ship Cruise Lines, 2016, 2015, 2014
- » Virtuoso “Best VAST Partner” Award, 2016
- » Cruise Critic Editor’s Pick Awards “Best for Adventure,” 2016, 2013, 2012, 2011, 2010
- » 2016 World Tourism Award
- » Andrew Harper’s Reader Choice Awards: Best Cruise Lines, 2016
- » Town & Country Cruise Awards: Best for Families and Onboard Activities, Expedition Cruises, 2016
- » Porthole Cruise Magazine Readers’ Choice Awards: Best Expedition Cruise Line, 2015
- » Tourism Cares Travel Philanthropy Awards: Legacy in Travel Philanthropy, 2015
- » Condé Nast Traveler’s “Gold List,” 2013, 2009, 2008, 2007, 2006, 2005
- » Virtuoso “Sustainable Tourism Leadership-Supplier” Award, 2013
- » Travel + Leisure “World’s Best” Award for Small-Ship Cruise Lines, 2017, 2013, 2012, 2011, 2010, 2009, 2008
- » Travel + Leisure “World’s Best for Families” Award for Small-Ship Cruise Lines, 2012, 2011, 2010, 2009
- » Climate Champion Award to Sven Lindblad by Clean Air-Cool Planet, 2009

▶ GO TO [WWW.EXPEDITIONS.COM/AWARDS](http://WWW.EXPEDITIONS.COM/AWARDS) FOR AN EXTENDED LIST.



*Hiking on Staten Island.*