



SOUTH GEORGIA & THE FALKLANDS

SERENGETI
OF THE
SOUTHERN
OCEAN

ABOARD NATIONAL GEOGRAPHIC EXPLORER | 2018-2020



Lindblad
Expeditions



NATIONAL
GEOGRAPHIC™

If the astonishing sight of some 100,000+ king penguins in one rookery alone were all this expedition offered; if at the end of our time among the kings—observing, listening, photographing, walking among and communing with them—our team said “Show’s over, Folks,” and everyone were to head back home—it’s likely no one would complain, according to all our expedition leaders. It’s that profound and rewarding an experience.

BUT THERE’S MORE: THE GREATEST WILDLIFE SPECTACLE ON EARTH.

There’s life in such profusion that it boggles your mind as it sends your spirit soaring. Dense colonies of king penguins, fur seals, elephant seals, macaroni and gentoo penguins. Slopes of stunning windward cliffs teeming with grey-headed, black-browed and wandering albatross—nearly a third of all the birds of this species nest here. Plus, there are the rare endemics: the mighty South Georgia pipit, the only songbird in the Antarctic region and South Georgia’s only passerine; and the Falkland’s Johnny rook. (Life-listers take note.)

Once a killing ground for whalers, South Georgia is now a sanctuary, an extravagant celebration of wildlife and pristine wildness.

We travel with some of the best wildlife photographers on Earth, and even their best photos can’t do this spectacle justice. So, we offer images on the following pages as an invitation—to see it all yourself.



The thrilling sight of tens of thousands of king penguins greeting you on a single beach in South Georgia!



Dear Traveler,

The comment cards, letters, emails and post-voyage reports I receive about South Georgia from our guests, expedition team, and captains all say, essentially, the same thing—“It was the most magical, amazing, extraordinary place I’ve ever been.” And our guests extend the superlatives to the Falklands, exhilarated by all they discover there.

Among the planet’s pre-eminent wildlife destinations, South Georgia and the Falklands are a must-see for those who love wild nature. But since the spectacle they offer is birds in astounding numbers—2018, the Year of The Bird, is the perfect time to go.



We’re celebrating the **Year of The Bird** together with National Geographic, to honor a visionary piece of conservation legislation still in force today: the Migratory Bird Treaty Act, passed in 1918 through the advocacy of National Geographic founder Henry Henshaw and photographer George Shiras III (see more on pages 10-11).

On whichever departure you choose, when not out exploring, be sure to head to the Bridge to join our naturalists, our captain, and officers, for the fun of spotting and tallying the many Southern Ocean bird species you’ll see. And if you choose the October 22, 2018 departure, you’ll really get in the spirit—as you’ll share the experience with renowned bird expert, author of *The Sibley Guide to Birds*, David Sibley, plus two of our veteran naturalists who have been designated Year of the Bird Ambassadors (see page 17).

In South Georgia and the Falklands, you’ll discover an array of thriving, vibrant life like no other. The photographs ahead do their best to show you why we call it the Serengeti of the Southern Ocean, but they can’t compare to being there. I promise it will exceed your every expectation.


All the best,

A handwritten signature in blue ink, reading "Sven-Olof Lindblad". The signature is stylized and fluid.

Sven-Olof Lindblad

EXCLUSIVE SAVINGS

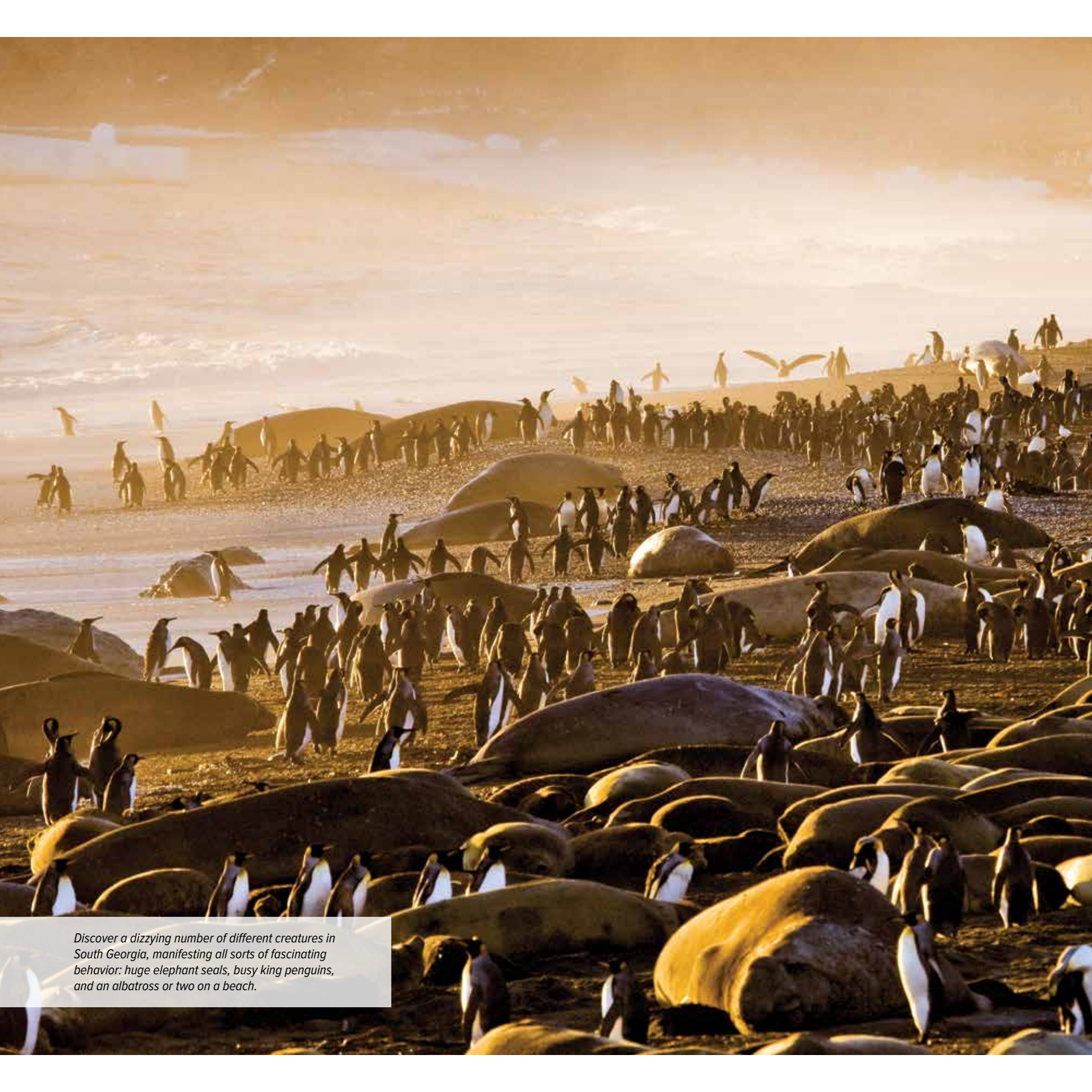
Enjoy complimentary
airfare from Miami when
you book by July 31, 2018.
See page 24 for details.



THE SERENGETI OF THE SOUTH aptly describes the spectacular scale of South Georgia wildlife, but it's more like Galápagos than Africa in one vital respect—the animals are 'right there,' and so are you. You will feel like a visitor to a sovereign nation, seeing life as it's really lived by its citizens in every detail, up-close. And you'll enjoy the ultimate luxury: time, to be there, taking photos or simply steeping in the sheer magnificence of it.



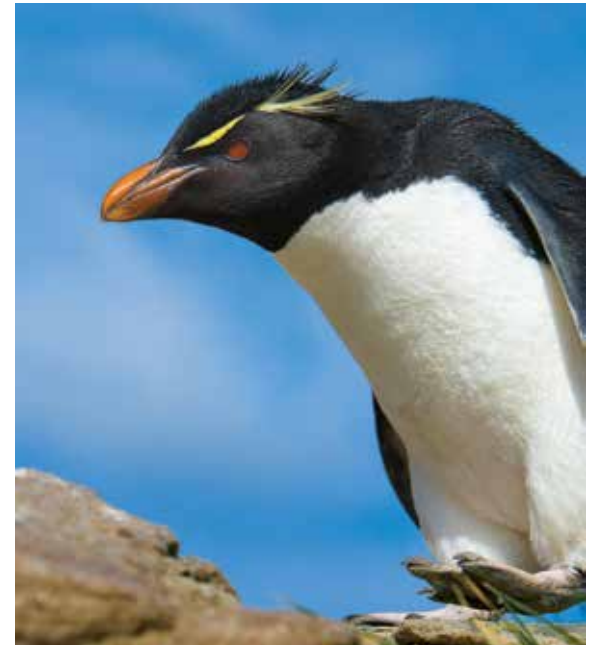
Photo opposite: A Zodiac landing is greeted by a trio of king penguins. Clockwise from top: Guests photographing king penguin chicks; wandering albatross on a nest; elephant seal pups; blue-eyed shag, Falkland Islands; hiking in South Georgia.



Discover a dizzying number of different creatures in South Georgia, manifesting all sorts of fascinating behavior: huge elephant seals, busy king penguins, and an albatross or two on a beach.



The wealth of wildlife in the islands is simply staggering. Spot these species. Clockwise: A fur seal amid the tussock grass; a rockhopper penguin, Falkland Islands; guests get a close-up look at an elephant seal; a male wandering albatross spreads his wings to entice his mate; the tiny South Georgia pipit; a stately king penguin adult and fuzzy chick.





AND OVER IT ALL LIES THE SHIMMERING MANTLE OF HISTORY. South Georgia is where the saga of Ernest Shackleton's legendary *Endurance* expedition famously reached its dénouement. You'll have the opportunity to walk in the footsteps of part of his historic traverse from Fortuna Bay to the Stromness whaling station, now a ruin; and drink a toast to him at the site chosen as his final resting place.





A HIKING HIGH AT THE BOTTOM OF THE WORLD

South Georgia offers a one-of-a-kind combination of stunning scenery and history few other hikes worldwide can match. Conditions permitting, this challenging hike begins at Fortuna Bay, home to a sizable king penguin rookery (approximately 10,000 pairs), small numbers of breeding Antarctic fur seals, southern elephant seals, and some light-mantled sooty albatross; the trail head itself is at a distance from most of the wildlife density. A steep vertical trail through tussock grass—where depending on the season you might see resting fur seal mothers and pups—becomes a gradual but steady incline. Along the hike the scenery is mostly alpine with stunning views of the Allardyce Range, and interesting geology to observe: Cumberland formations of dramatically folded sandstones from tectonic activity that separated South Georgia from Gondwanaland long ago. Plus, an incredible vista: at the highest elevation, about two-thirds of the total hike distance, you have the overlook of Shackleton's waterfall, Crean Glacier in the distance, and the old Stromness whaling station below. A steep, but short, descent from there drops you back down onto a sea level outwash plain that leads down—a gradual and graceful descent—to Stromness Bay, and the elegiac ruins of the whaling station, with fur seals, and perhaps a few more elephant seals. Add to that the bragging rights—perhaps as few as 1 in 500,000 people can claim to have done it—and it's one for your personal memory bank.



Opposite page: Half of an archival panorama shot by Frank Hurley of Frank Worsley and Lionel Greenstreet looking across South Georgia Harbour with the Endurance at anchor below. Top right: Lindblad hikers on the last part of the Shackleton traverse from Fortuna Bay to Stromness Harbour, South Georgia; naturalist Steve Maclean, paying homage to “The Boss” Sir Ernest Shackleton at his gravesite at Grytviken, South Georgia.



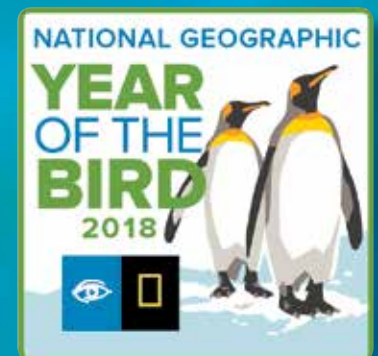
YEAR OF THE BIRD 2018

CELEBRATING THE YEAR OF THE BIRD. The year 2018 has been designated the Year of the Bird by National Geographic in partnership with a broad range of conservation organizations, in celebration of the 100-year anniversary of the passage of the Migratory Bird Treaty Act in 1918—a visionary act of legislation pushed through by National Geographic founder Henry Henshaw, and photographer and author George Shiras III, a former member of the U.S. House of Representatives.

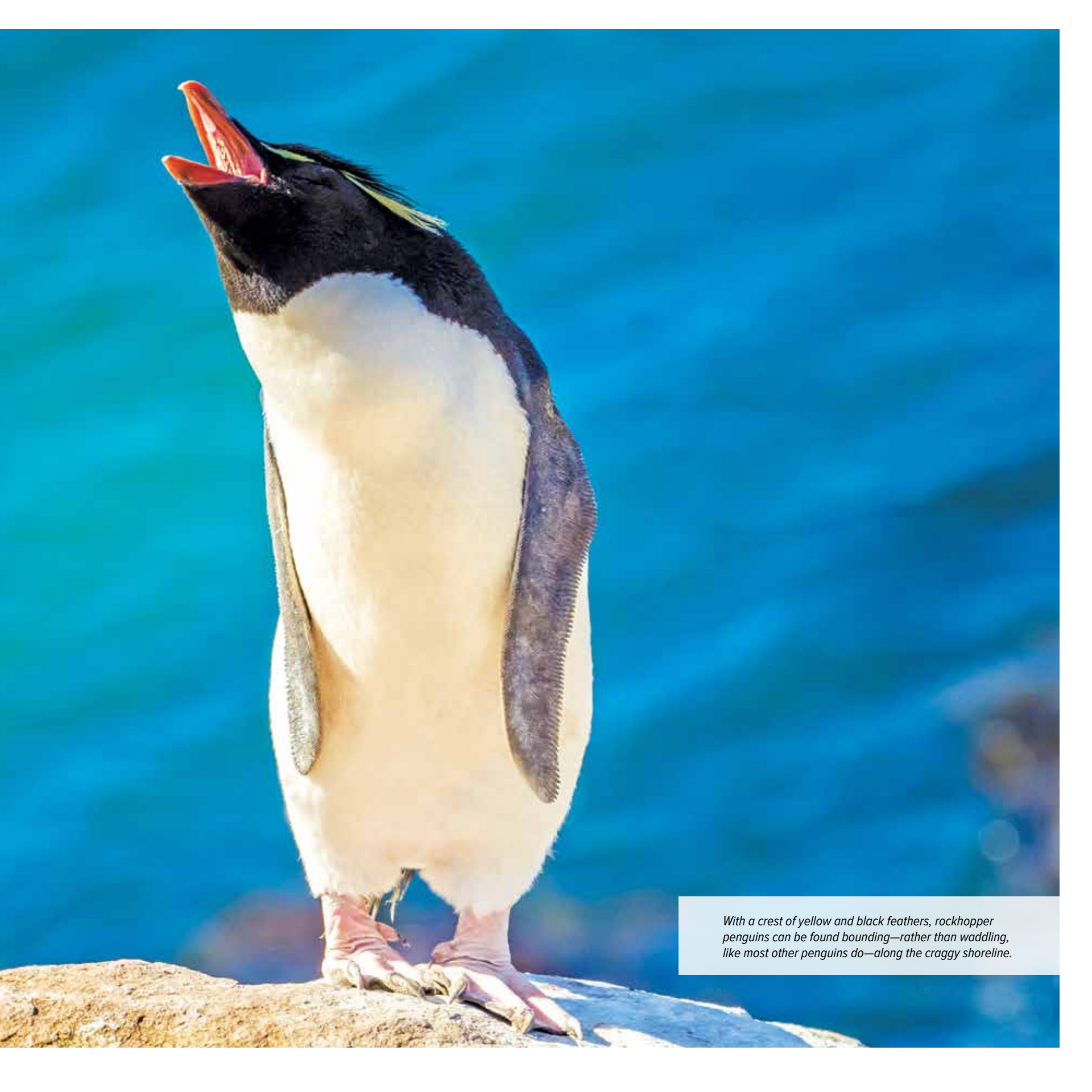
One of the first laws of environmental conservation, it mandated the protection of nearly 1,000 species of migratory birds, many in danger of extinction from commercial exploitation at the time of its passage. This visionary act of legislation has saved the lives of millions of birds.

We invite you to celebrate the 2018 **Year of the Bird** with us by taking advantage of these exclusive opportunities:

- **Year of The Bird Ambassadors** | Veteran Lindblad naturalists to enrich your experience with bird info and insights.
- **Renowned bird expert, David Allen Sibley aboard!** | Take advantage of the opportunity to travel with the author of *The Sibley Guide to Birds* on his first ever foray into the Southern Ocean—our October 22, 2018 departure. And receive our **Year of The Bird** commemorative embroidered patch (right) with our compliments. It's a worthy remembrance of enlightened conservation.



» LEARN MORE AT EXPEDITIONS.COM/YEAROFTHEBIRD



With a crest of yellow and black feathers, rockhopper penguins can be found bounding—rather than waddling, like most other penguins do—along the craggy shoreline.

EXPERIENCING THE FALKLANDS

Some 3,000 people live in the Falklands; 2,500 in the capital, Stanley, and 500 distributed among the “settlements,” the sheep farms on islands within the Falklands group. Among the highlights of our explorations here is walking—walking through the waving tussock grass to the windward cliffs studded with albatross pairs and fledglings. Walking to visit a gentoo penguin rookery. Walking alongside the bays, seeing steamer ducks and foraging Ruddy-head geese; across the graceful topography of meadows dotted with Magellanic penguin burrows; past the curious Johnny rooks (striated caracaras) to a humble welcoming home of a farmer, our friend for decades, to be greeted with a tea table groaning with homemade scones and cakes. You’ll eat with the abandon of one who’s walked miles in the freshest of air and seen wonders, and warm yourself in the glow of a fragrant peat fire. And a delight of a different type is Stanley, a last bastion of archival Britishness, with its shops, fish and chips, and excellent small museum. Choose to visit and you’ll have the opportunity to see a highly illuminating and moving documentary on the British-Argentinian conflict—just another of the Falklands surprising ‘reveals.’

FLY THE CROSSING!

You’ll have the special opportunity to fly by private charter from the Falklands to Santiago, eliminating the sea crossing one-way.





The Falklands are part Britain, part wild kingdom.

Opposite page, clockwise from top: Guests photograph a black-browed albatross colony; Magellanic oystercatcher; close-up of a Johnny rook.

This page, clockwise from top: Child with a lamb at a settlement on West Point Island; there's nothing quite like a Falklands farm tea with a splendid assortment of cakes, shortbread, lemon tarts and scones; in Stanley, evidence of the islands' long-standing allegiance to Britain; Magellanic penguins nestled in the tussock grass.



NATIONAL GEOGRAPHIC EXPLORER, THE FINEST BASE CAMP AN EXPLORER COULD WANT, allows us to freely roam. She is equipped with a fleet of Zodiacs and kayaks for up-close and personal explorations. Her Bridge is welcoming, inviting you to spend time with the Captain and officers, watching the calm business of navigation unfold. *Explorer* is also equipped for living well. The lounge, dining room and other public spaces contribute to the *esprit de corps* that is a hallmark of our expeditions. A fully stocked library serves those who want to learn more or curl up with a best-seller. The wellness center, gym, sauna, and stretching sessions with our wellness specialist boost the tonic of wildness nature provides. And cossetting cabins, outfitted with our signature linens and feather duvets provide the perfect ending to active days.



Opposite page, clockwise: National Geographic Explorer at anchor, South Georgia; Captain Oliver Kreuss at the bridge; expedition leader Russell Evans at recap, a Lindblad tradition.

This page, from left: National Geographic Explorer's expansive decks invite you outdoors to relax and observe the vistas; Explorer's Bistro Bar is a lively alternative to the main dining room for meals and socializing.



THE QUALITY OF YOUR TRAVELING COMPANIONS CONTRIBUTES greatly to the quality of your experience. Flanking our expert expedition team are special guests who'll add an extra layer of insight and perspective to all you'll see and do. And your fellow guests will add much, too.



Representing the entire expedition team: From left, naturalist Jason Kelley, naturalist/Lindblad-National Geographic certified photo instructor, Michael S. Nolan, and undersea specialist Paul North.



John Francis

John recently retired as Vice President for Research, Conservation and Exploration at the National Geographic Society. A marine biologist and National Geographic grantee, he began his career studying the behavioral ecology of seals and sea lions on remote islands in North and South America. He now serves on the Sustainable Travel International and Congo Basin Institute boards, and advises the National Geographic/Lindblad Fund supporting marine projects. John will join the **Mar. 6, 2019** departure.



Jasper Doest

Jasper specializes in conservation issues, travel, and wildlife photography. As a Fellow of the Int'l League of Conservation Photographers, he has received multiple awards and appeared in numerous publications. **October 22, 2018**



Jeff Mauritzen

Jeff's work expresses an unwavering passion and awe for the natural world. His assignments have immersed him in vivid landscapes on all seven continents, and in more than 60 countries. **March 6, 2019**

» TO SEE THE STAFF FOR YOUR DEPARTURE VISIT [EXPEDITONS.COM/SGEXPERTS](https://www.expeditions.com/sgexperts)

BE PART OF AN HISTORIC FIRST ON OCT. 22, 2018



David Allen Sibley, author and illustrator of the renowned Sibley series of guides, including *The New York Times* best seller, *The Sibley Guide to Birds*, will be joining us as a Global Perspective Guest Speaker on his first expedition to the Southern Ocean! Share this momentous event with one of the world's foremost birders, as he encounters his first king penguins, his first albatross colonies, and his first sighting of the endemic Johnny rook and South Georgia pipit! Talk birds, art, science, and more with him as you explore these wildlife rich islands, and over drinks or dinner. David has contributed art and articles to *Smithsonian*, *Science*, *The Wilson Journal of Ornithology*, *Birding*, *BirdWatching*, and *North American Birds*, and wrote and illustrated a syndicated column for *The New York Times*. He is the recipient of the Roger Tory Peterson Award for Lifetime Achievement from the American Birding Association and the Linnaean Society of New York's Eisenmann Medal.



SHARE THE ADVENTURE WITH OUR DESIGNATED BIRD AMBASSADORS, TOO



Santiago Imberti

Patagonia-born ornithologist, photographer, and writer Santiago Imberti is director of conservation for an NGO that educates youth about living sustainably. He has worked to protect the critically endangered hooded grebe,

endemic to Patagonia, and to create a national park in Patagonia. **Oct. 22, 2018**



Bud Lehnhausen

A veteran naturalist known to many Lindblad guests, Bud is a research biologist and naturalist. Since 1987, Bud has traveled on voyages to, among other destinations, Antarctica and the Arctic with Lindblad. He is a keen birder, and his research has ranged from studying songbird populations in relation to succession,

tundra bird populations and migration, and woodpecker populations after natural forest fires. **Oct. 22, 2018**

» LEARN MORE ABOUT EACH SPECIAL GUEST & PHOTOGRAPHERS AT [EXPEDITIONS.COM/BIOS](https://www.expeditions.com/bios)

SOUTH GEORGIA AND THE FALKLANDS

19 DAYS/16 NIGHTS—ABOARD NATIONAL GEOGRAPHIC EXPLORER

PRICES FROM: \$16,990 to \$34,520 (See page 23 for complete prices.)

Steeped in Shackleton and whaling lore, covered mostly in glaciers, South Georgia explodes with life: gentoo and king penguins, enormous elephant seals and a thriving fur seal population. Here on South Georgia you can observe one of the world's great wildlife spectacles: literally tens of thousands of stately king penguins on a single beach. The Falkland Islands are equally impressive, with colonies of nesting albatross and rockhopper penguins. This British Territory also adds a human element, with remote settlements and people living off the land.



EXPEDITION HIGHLIGHTS

- ▶ Weather permitting, hike in the footsteps of Sir Ernest Shackleton's fated Imperial Trans-Antarctica Expedition aboard *Endurance*.
- ▶ See stately king penguins—literally tens of thousands on a single beach in South Georgia.
- ▶ Observe magnificent black-browed albatross in the Falklands, and see Magellanic penguins peeking from their burrows.
- ▶ Paddle a kayak amid curious fur seals, and Zodiac cruise in South Georgia's isolated bays.
- ▶ You'll have the special opportunity to fly by private charter from the Falklands to Santiago, eliminating the sea crossing one-way.
- ▶ Two days prior in warm Buenos Aires? Or time post-voyage at Easter Island?
Call or visit expeditions.com/southgeorgiaext

FLY THE FALKLANDS CROSSING!

On all of these departures, you'll have the opportunity to depart the Falklands by air, from the trim Royal Air Force base in East Falkland, a short ride from Stanley, to Santiago, Chile. Instead of spending the day at sea, you'll gain an extra day in the islands. And since you'll be landing in Santiago, you'll have the opportunity to spend a day or two there, if you wish, to experience an elegant city set against the backdrop of the Andes.

*King penguins as far as the eye can see,
South Georgia.*

DAYS 1 AND 2: U.S./BUENOS AIRES, ARGENTINA

Depart on an overnight flight to Buenos Aires. Settle into the Alvear Art Hotel (or similar) before seeing the city's Beaux-Arts palaces and the famous balcony associated with Eva Perón. (Day 2: L)

DAY 3: FLY TO USHUAIA/EMBARK

Fly to Ushuaia, the southernmost city in the world. Enjoy lunch on a catamaran cruise of the Beagle Channel before embarking. (B,L,D)

DAY 4: AT SEA IN THE SOUTH ATLANTIC

Settle into shipboard life, listening to informal discussions from our naturalist staff to prepare for the wildness in the Falklands. Spend time on deck and on the bridge, scanning for petrels, penguins and albatross. (B,L,D)



Blue-eyed shags, Falkland Islands.

DAYS 5 AND 6: FALKLAND ISLANDS

Each Falkland Island is a variation on the theme of topographical beauty with white-sand beaches, vaulting cliffs, windswept moors, and the sunlit yellows and sage greens of waving tussock grass. The Falklands boast thousands of irresistible gentoo, rockhopper and Magellanic penguins, as well as magnificent albatross and fur seals. Walk along

beautiful white-sand beaches, meander through tussock grass or sit atop a cliff and ponder the views. (B,L,D)

DAYS 7 AND 8: AT SEA

During our days at sea, we learn about the fascinating history of Antarctic exploration, as well as the flora, fauna and geology of South Georgia. Our naturalists help identify the seabirds that follow us: wandering albatross, prions and black-browed albatross. (B,L,D)

DAYS 9-15: SOUTH GEORGIA ISLAND

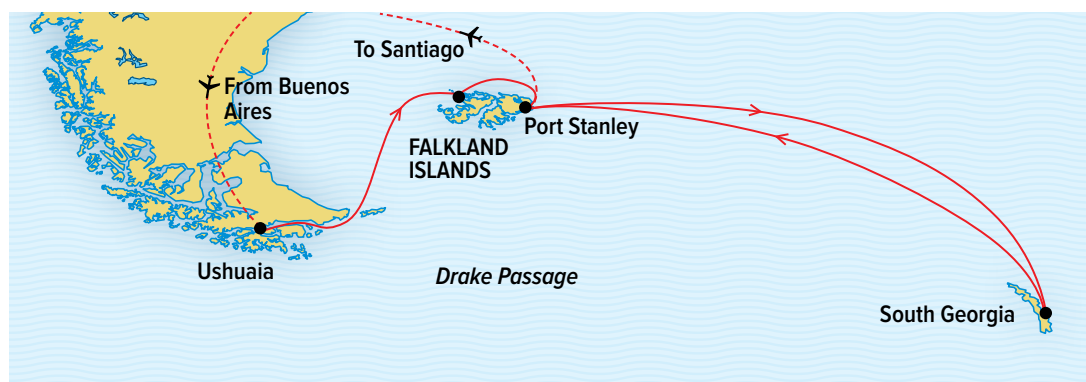
Explore the spectacular coastline of South Georgia Island. In keeping with the nature of an expedition, our schedule is flexible with opportunities for walking, hiking, kayaking and Zodiac excursions. Sailing along the coast, we plan to offer activities every day including visits to Grytviken, the final resting place of Shackleton, and Stromness Harbour, where Shackleton, Tom Crean and Frank Worsley finally reached aid at a whaling station. See huge elephant seals, and on a single beach, you will see thousands of king penguins! (B,L,D)

DAYS 16 AND 17: AT SEA/FALKLANDS

With whales beneath and birds above, head up to the bridge, or spend these days enjoying the ship's spa, fitness center, library, and observation deck. After time at sea, our journey across the South Atlantic Ocean takes us once more to the island archipelago that teems with nature. Our afternoon visit to Port Stanley offers a chance to see the human face of the islands, to meet the hospitable locals, hoist a drink at a local pub, and stroll around this remote colonial town. (B,L,D)

DAYS 18 AND 19: DISEMBARK PORT STANLEY, FALKLANDS/FLY TO SANTIAGO/U.S.

After breakfast, disembark in the Falklands capital city of Stanley, and transfer to the airport at Mount Pleasant for our private charter flight to Santiago to connect with your overnight flight home. (Day 18: B,L)



EXPEDITION DETAILS

DATES: 2018 Oct. 22; 2019 Mar. 6; Oct. 23; 2020 Mar. 6



Southern elephant seal pups, South Georgia.

SPECIAL OFFERS

FREE INTERNATIONAL & CHARTER AIR GET YOU THERE

Enjoy complimentary airfare when you book by July 31, 2018. Flights based on economy group airfare from Miami. Ask about other U.S. gateways. See page 24 or call for details.

HOSPITALITY INCLUDED

Your bar tab and all crew gratuities are included in the voyage price, with our compliments.



Easter Island.

EXTENSIONS

YOU'VE COME THIS FAR, EXPLORE MORE

Make the most of your travel time and proximity to bucket-list worthy destinations. And count on our team's skill and care to make your transitions to or from the ship seamless. Choose to arrive early in Buenos Aires or add a stay in Easter Island. See page 25, or visit expeditions.com/southgeorgiaext

EXPERIENCING THE FALKLANDS WITH ALL YOUR SENSES

Whether it's satisfying your appetite, kindled by active exploring in exhilaratingly fresh air and expansive landscapes, or keeping your spirit of anticipation whetted during days at sea, the culinary side of our expedition team is equal to the challenge. From the bespoke omelets and array of choices at lavish breakfast and lunch buffets, to the artfully prepared and plated appetizers, entrées and desserts served at dinner, your experience will differ dramatically from the deprivation endured by the whalers and explorers, like Shackleton and his men, in the days of yore. It's fair to say: Vitamin C has never been as available in the Southern Ocean, or in as many delicious forms.



Clockwise from top: From farm to table, including Falklands lamb; each day delicacies from ganaches to lobster; another Falkland endemic—we were the first ship to serve this artisanal beer, crafted in the islands.

“Ushuaia, the southernmost city in the world, is not an agricultural center, and provisioning the ship there, with produce flown in from elsewhere in Argentina and Chile has always proved fraught. Now, with our support, Stanley Growers, located in the Falklands capital, is meeting our needs for fresh, sustainably-grown and superb-quality produce. The teams enjoy every aspect of the relationship, from going to the farm when Explorer anchors in Stanley, to getting creative with what they find there. And of course, guests can join us on our visits, to meet the farmers and learn how remarkable this farm is—especially given its location on the planet.”

—Mathijs Pasterkamp, Head Chef, *National Geographic Explorer*



Above: Mathijs Pasterkamp, Head Chef, National Geographic Explorer.

Left: Hotel Manager Patrik Svaerdmyr with Tim Miller of Stanley Growers; just-picked cherry tomatoes, radishes and scallions.





NATIONAL GEOGRAPHIC EXPLORER

CAPACITY: 148 guests in 81 outside cabins.

REGISTRY: Bahamas. **OVERALL LENGTH:** 367 feet.

National Geographic Explorer is a state-of-the-art expedition ship, and the flagship of the Lindblad-National Geographic fleet. It is a fully stabilized, ice-class vessel, with an ice-reinforced hull, enabling it to navigate polar passages while providing exceptional comfort. It carries kayaks and a fleet of Zodiac landing craft. An undersea specialist operates a remotely operated vehicle (ROV) and sophisticated video equipment, extending access to the underwater world.

PUBLIC AREAS: Bistro bar; chart room; restaurant; global gallery; library; lounge with full service bar and state-of-the-art facilities for films, slideshows and presentations; mudroom with lockers for expedition gear; and observation lounge. Our “open bridge” provides guests an opportunity to meet our officers and captain and learn about navigation.

MEALS: Served in single seatings with unassigned tables for an informal atmosphere and easy mingling. Menu is international with local flair.

CABINS: All cabins face outside with windows or portholes, private facilities and climate controls. Some cabins have balconies. Cabins equipped with Ethernet and Wi-Fi connections and USB ports for mobile devices.

EXPEDITION EQUIPMENT: Zodiac landing craft, kayaks, Remotely Operated Vehicle (ROV), hydrophone, splashcam, underwater video camera, aerial remote controlled camera, video microscope, snorkeling gear (where applicable).

SPECIAL FEATURES: A full-time doctor, undersea specialist, National Geographic photographer, Lindblad-National Geographic certified photo instructor and video chronicler, internet café and laundry.

WELLNESS: The vessel is staffed by a wellness specialist and features a glass-enclosed fitness center, outdoor stretching area, LEXspa treatment room and sauna.



Clockwise from top: Category 6 Suite; Standard bath; Category 5 cabin with balcony.

CATEGORY 1: Main Deck with one or two portholes

#301-308

CATEGORY 2: Main Deck with window #317-320, 335-336

CATEGORY 3: Main Deck with window #313-316, 321-328, 337-340, 342, 344, 346, 348, 350

CATEGORY 4: Upper and Veranda Decks with window #103-104, 107-108, 201-202, 204-207, 210, 212, 217, 226, 228

CATEGORY 5: Upper Deck with balcony #209, 211, 214, 216, 218, 220-222, 224

CATEGORY 6: Veranda Deck–Suite #101-102; Upper Deck–Suite with balcony #213

CATEGORY 7: Upper Deck–Suite with balcony #215, 219, 230

CATEGORY A SOLO: Main Deck with window #309-312, 329-334

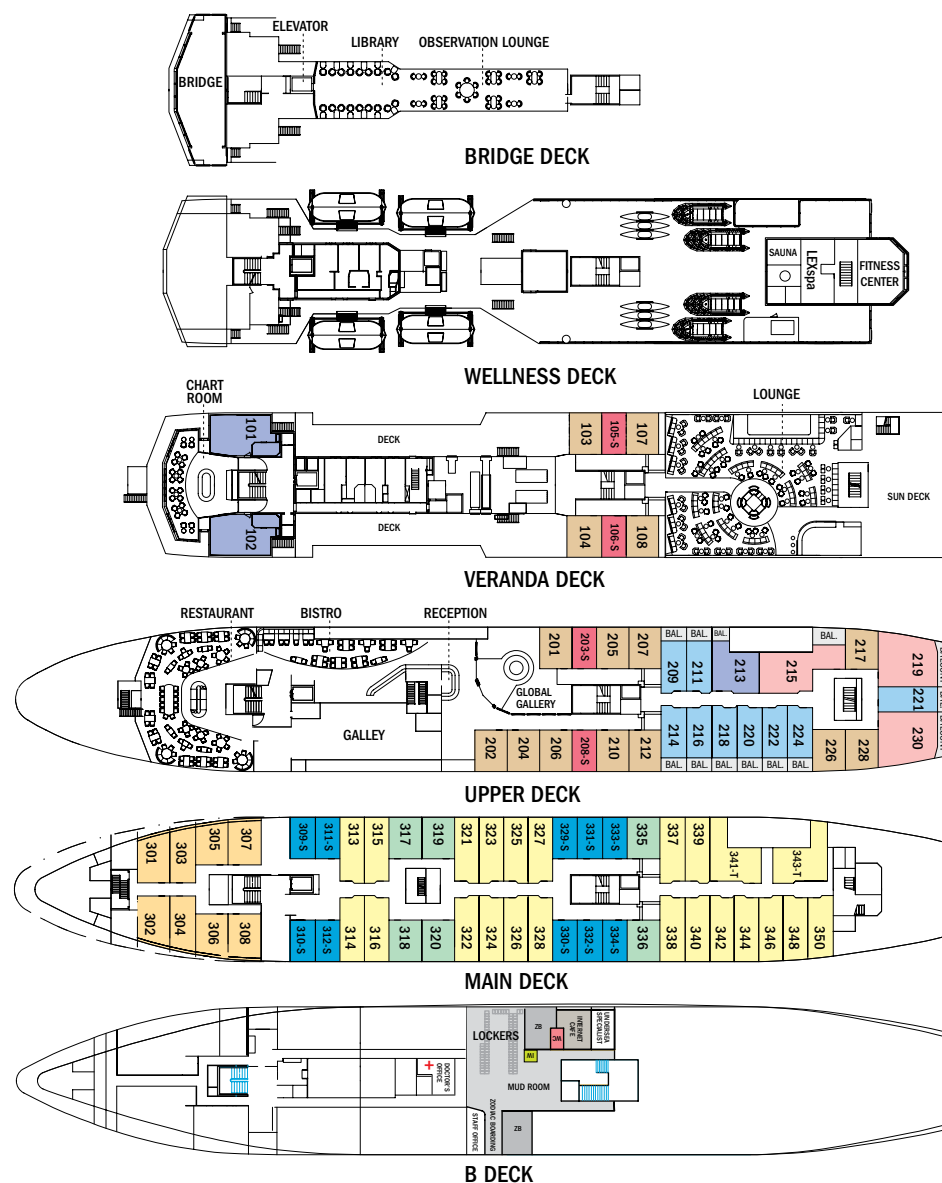
CATEGORY B SOLO: Upper and Veranda Decks with window #105-106, 203, 208

CATEGORY 3 TRIPLE: Main Deck with window #341, 343

SHARED ACCOMMODATIONS: Available in Categories 1 and 2.

SOLE OCCUPANCY: Cabins available in Categories A and B.

NOTE: Cabins #209, 211, 214, 216-218, 220, 222, 224, 226, 228, 303-306—These cabins have one queen-sized bed. All other double cabins have two lower single beds; some can convert to a queen-sized bed. Third person rates are available in the designated triple occupancy cabins at one-half the double occupancy rate. Cabins #341, 343, 101, 102, 215, 219 and 230 can accommodate a third person.



Prices are per person, double occupancy unless indicated as solo.

ITINERARY	DATES	CAT. 1	CAT. 2	CAT. 3	CAT. 4	CAT. 5	CAT. 6	CAT. 7	CAT. A SOLO	CAT. B SOLO	ADVANCE PAYMENT	NOTE
South Georgia and the Falklands	Oct. 2018/ Mar. 2019	\$16,990	\$18,130	\$19,130	\$20,350	\$24,580	\$28,350	\$32,880	\$22,660	\$23,910	\$2,500	Includes one hotel night in Buenos Aires. Immigration fees are not included. Sample Airfares: Miami/Buenos Aires, returning Santiago/Miami: Economy from \$1,100; Business from \$3,100. Charter Airfares: from from \$960-\$1,240 (Buenos Aires/Ushuaia, return Falklands/Santiago).
	Oct. 2019/ Mar. 2020	\$17,840	\$18,990	\$19,990	\$21,350	\$25,800	\$29,770	\$34,520	\$23,740	\$24,990		

▶ TAKE A VIRTUAL VIDEO TOUR AT WWW.EXPEDITIONS.COM/NGEXPLORER

EXCLUSIVE INCENTIVES

FREE INTERNATIONAL & CHARTER AIRFARES:

Enjoy complimentary airfare from Miami when you book by July 31, 2018. Airfare is based on economy group flights, and must be ticketed by Lindblad Expeditions. (Miami/Buenos Aires, return Santiago/Miami, plus charter flights Buenos Aires/Ushuaia, return Falklands/Santiago.) In the case that Lindblad's group or charter flights are no longer available at time of booking, we reserve the right to issue a credit. All offers are valid for new bookings only, subject to availability at the time of booking, and may not be combined with other offers and pre- and post-extensions. Call for details.

COMPLIMENTARY BAR TAB & CREW GRATUITIES: Your bar tab and all crew gratuities are included in the voyage price on all *National Geographic Explorer* voyages. Call for details.

BACK-TO-BACK SAVINGS: SAVE 10% on any consecutive journeys taken aboard *National Geographic Explorer*. This savings

is applicable on voyage fares only, and is not valid on extensions or airfare.

TRAVELING AS A GROUP: SAVE 5% when traveling as a group of 8 or more people. Take advantage of this great savings, while enjoying traveling with your friends and family. This savings is applicable to voyage fares only, and is not valid on extensions or airfare. Deposit, final payments, and cancellation policies for group travel vary from our regular policies.

BRINGING THE KIDS: We believe sharing an expedition with your kids or grandkids is a life-enhancing experience. So, take \$500 off for each child under the age of 18.

COMBINING OFFERS: Certain offers may be combinable, up to two savings opportunities except where noted otherwise. For example, travel with a group of 8 or more on back-to-back expeditions, and take advantage of both savings!

FOR RESERVATIONS: CONTACT YOUR TRAVEL ADVISOR OR LINDBLAD EXPEDITIONS

1.800.EXPEDITION (1.800.397.3348) | **WWW.EXPEDITIONS.COM**

RESERVATION INFORMATION

Costs Include: All accommodations aboard ship or in hotels per itinerary or similar, all meals and alcoholic beverages (except certain super-premium brands of alcohol) aboard ship, meals on land as indicated, air transportation where indicated as included, shore excursions, sightseeing and entrance fees, special access permits, transfers to and from group flights, use of kayaks, tips (including to ship's crew), taxes and service charges, services of a ship physician, and services of our expedition staff.

Not Included: Air transportation (except where shown as included), extensions, passport, visa, immigration fees, meals not indicated, travel protection plan, items of a personal nature, such as e-mail, voyage DVD, laundry.

Airfare: For all programs, airfare is an additional cost unless otherwise indicated. Sample airfares are subject to change. We will gladly assist in making your air arrangements for a \$50 per person service fee.

TERMS & CONDITIONS

Reservations: To reserve your place, an advance payment of \$2,500 is required at the time of reservation. Payment is accepted by Visa, MasterCard, American Express, Discover, or by check. Receipt of your initial payment indicates your acceptance of our complete Terms and Conditions. We require written notice at the time of reservation for any physical condition, diet, or treatment

requiring special attention.

Once your reservation is confirmed, we urge you to use your personalized online account for important information to help you prepare for your voyage. Managing your documents online will facilitate fast and accurate communication, and allow you to provide us with pertinent details we require, in order to complete your reservation. Your online account gives you access to your Expedition Guide, which includes valuable information specific to your voyage. You can also use your online account to make easy payments, view recommended flights and reading material, packing list, and more.

Final Payment: Final payment is due 120 days prior to departure. We reserve the right to cancel your reservation if payment has not been received by final payment due date.

Important: Cancellations are subject to penalty. Visit our website for details on our Cancellation Policy and Travel Protection Plan.

Smoking Policy: Smoking is allowed only in designated outdoor areas.

Responsibility and Other Terms & Conditions: Certain other provisions concerning, among other things, limitations of Lindblad Expeditions' and the National Geographic Society's liability for loss of property, injury, illness or death during the voyage will be provided to all guests on the ship's ticket sent

prior to departure, and are also available on our website at www.expeditions.com/terms, or upon request. By registering for a trip, the guest agrees to all such terms and conditions.

Note: Itineraries and prices listed in this brochure are valid as of publication date, and are subject to change.

©2018 Lindblad Expeditions

Lindblad Expeditions and the Eye are the trademarks of Lindblad Expeditions. All rights reserved.

NATIONAL GEOGRAPHIC and the Yellow Border are the trademarks of the National Geographic Society. All rights reserved.

Photo Credits: Sisse Brimberg & Cotton Coulson/Keenpress, Ken Carlson, Chile DesConocido/Alamy, Stewart Cohen, David Cothran, El Viejo Almacén, Eric Guth, Justin Hofman, Ralph Lee Hopkins, Frank Hurley/SPRI, Frans Lanting, Sven-Olof Lindblad, Paul Nicklen/National Geographic Image Collection, Michael S. Nolan, Richard Pasley, Marco Ricca, Angela Robinson, Kevin Schafer, Susan Seubert, Shutterstock, SuperStock.

You'll receive our exclusive vintage-modern parka.





ACCLIMATE TO THE SOUTH START IN BUENOS AIRES

PRE-VOYAGE/2 DAYS/2 NIGHTS

2018/19*: \$1,890 per person, double occupancy.

Explore vibrant and warm Buenos Aires from the posh comfort of your well-sited hotel, on a curated two-day extension that showcases the city's beguiling personality. See its famous Beaux-Arts architecture and the balcony associated with Eva Peron. Explore the brightly painted bohemian communities of La Boca and San Telmo, with their cafes, galleries, and street art. Visit top museums, and take in an authentic tango performance.

EXPLORE MORE WONDERS CONCLUDE IN EASTER ISLAND

POST-VOYAGE/4 DAYS/4 NIGHTS

2018/19*: \$4,390 per person, double occupancy.

Take advantage of proximity to one of the most remote and mysterious places on Earth—Easter Island. Home to more than 600 giant *moai*, or stone statues, carved by the ancient Rapa Nui, this tiny island is almost 1,200 miles from its nearest island neighbor. Learn from key archaeologists about the ancient Rapa Nui culture that grew up in isolation.



**Note: Due to airline schedules, on select departures the extension spends an additional night in Buenos Aires (Explorer) or Santiago (Orion); additional cost applies.*

**Note: On all extensions airfare is not included; additional cost applies*

▶ FOR DETAILS, VISIT WWW.EXPEDITIONS.SOUTHGEORGIAEXT



96 Morton Street
New York, NY 10014

PRSR STD
U.S. POSTAGE
PAID
LINDBLAD
EXPEDITIONS

Account Number:



Expedition Code:



1.800.EXPEDITION | WWW.EXPEDITIONS.COM

Printed on 10% recycled content paper with soy-based inks. We recommend that you pass this along for others to enjoy or recycle.

SGE-038

ENJOY COMPLIMENTARY ROUND-TRIP AIRFARE. SEE PAGE 24 FOR DETAILS.

FLY THE CROSSING!

Now, on all departures, you'll have the special opportunity to fly by private charter from the Falklands to Santiago, eliminating the sea crossing one-way, and allowing an extra day to explore the islands.

