



Connect

Guests 120	Cabins 60
----------------------	---------------------

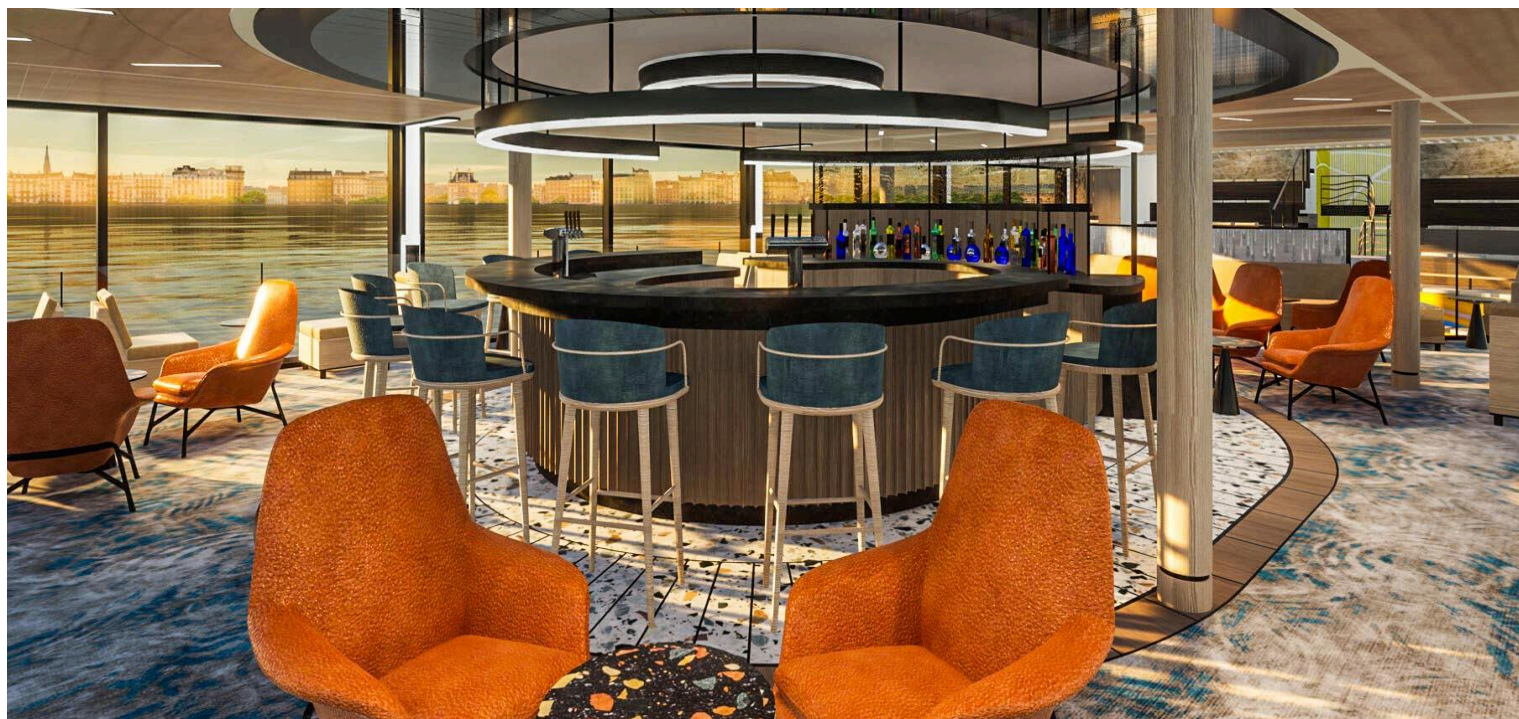
Discover Europe aboard an expertly crafted river ship rooted in sustainable design

Constructed in 2025, *Connect* is a brand-new, state-of-the-art European river ship joining our growing collection of bespoke charter vessels next year. With cutting-edge technology, luxurious amenities and wrap-around picture windows, this sleek 120-guest ship is uniquely designed to sail through the heart of storied destinations in Germany, France, The Netherlands and beyond. Sustainability and regional connection are at her core, creating a refined and meaningful experience that elevates every journey.

Setting sail in 2026, *Connect* features sixty 210 square-foot elegant and spacious staterooms (convertible to 420 square-foot suites), each one well-appointed with two large wardrobe closets, smart glass spa shower and full-width floor-to-ceiling windows to take in the charming riverside towns and pastoral landscapes.

With an array of dynamic public venues, there is plenty of space to relax, dine, mingle with your fellow travelers, and connect more deeply with your destination through expert presentations and onboard experiences like wine tastings and musical performances. This contemporary river ship includes an expansive wellness area, the Forum, which is a two-story amphitheater, a restaurant and bistro, as well as a lively lounge with a well-stocked bar.

Every detail is thoughtfully designed—from carefully sourced build materials and green technology that minimizes food waste to environmentally friendly bath and bedding products.

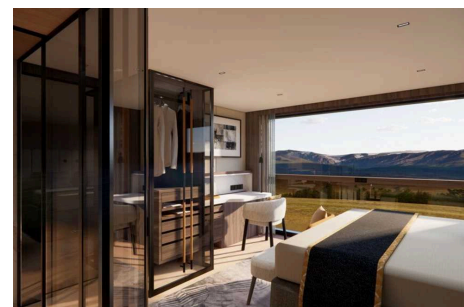


Cabin Categories

Category C1

Main Deck: #217-220, 225-231

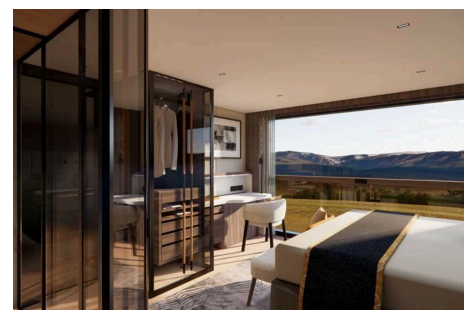
These 210-square-foot cabins located at the back of the Main Deck feature floor-to-ceiling windows, sash window balcony and quiet sleep sound cancellation system. The cabins each have a European king bed or two twin beds (configured upon request), a 55-inch smart TV, desk and chair, minibar, individual climate control and two wardrobes.



Category C2

Main Deck: #202, 204, 209-216

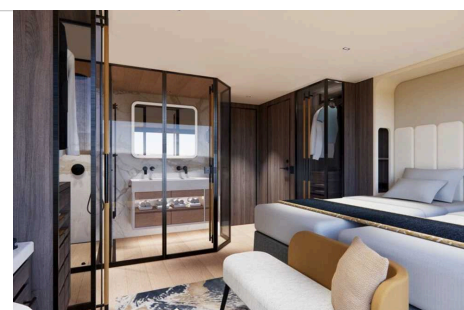
These 210-square-foot cabins located at the front of the Main Deck feature floor-to-ceiling windows, sash window balcony and quiet sleep sound cancellation system. The cabins each have a European king bed or two twin beds (configured upon request), a 55-inch smart TV, desk and chair, minibar, individual climate control and two wardrobes. Two category C2 cabins can be combined into a category S2 Suite.



Category F1

Main Deck: #F221, F222

These 420-square-foot two-bedroom family suites are located at the back of the Main Deck. Each bedroom features floor-to-ceiling windows, sash window balconies and quiet sleep sound cancellation system. Each cabin has a European king bed or two twin beds (configured upon request), 55-inch smart TV, desk and chair, minibar, individual climate control and ample storage including four wardrobes.



Category S2

Main Deck: #S201, S205, S206

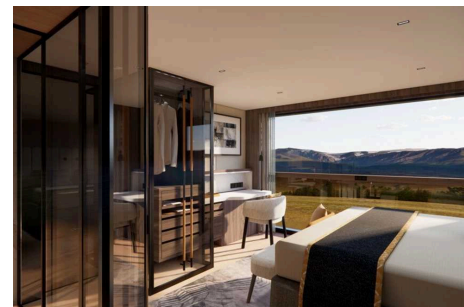
These one-bedroom suites are located at the front of the Main Deck and offer 420 square feet of space, including a separate sitting room. feature floor-to-ceiling windows, sash window balconies and quiet sleep sound cancellation system. The bedroom features a European king bed or two twin beds (configured upon request), 55-inch smart TV, desk and chair, minibar, individual climate control and ample storage including four wardrobes.



Category C3

Upper Deck: #318, 320, 325-331

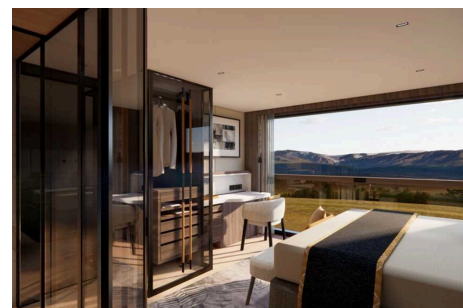
These 210-square-foot cabins located at the back of the Upper Deck feature floor-to-ceiling windows, sash window balcony and quiet sleep sound cancellation system. The cabins each have a European king bed or two twin beds (configured upon request), a 55-inch smart TV, desk and chair, minibar, individual climate control and ample storage including two wardrobes. Two category C3 cabins can be combined into a category S3 Suite.



Category C4

Upper Deck: #302, 304, 309-316

These 210-square-foot cabins located at the front of the Upper Deck feature floor-to-ceiling windows, sash window balcony and quiet sleep sound cancellation system. The cabins each have a European king bed or two twin beds (configured upon request), a 55-inch smart TV, desk and chair, minibar, individual climate control and ample storage including two wardrobes. Two category C4 cabins can be combined into a category S4 Suite.



Category S3

Upper Deck: #S317, S321, S322

These one-bedroom suites are located at the back of the Upper Deck and offer 420 square feet of space, including a separate sitting room. Large floor-to-ceiling windows and sash window balconies create a seamless indoor-outdoor connection. The bedroom includes a European king bed or two twin beds (configured upon request), 55-inch smart TV, desk and chair, minibar, individual climate control and ample storage including four wardrobes.



Category S4

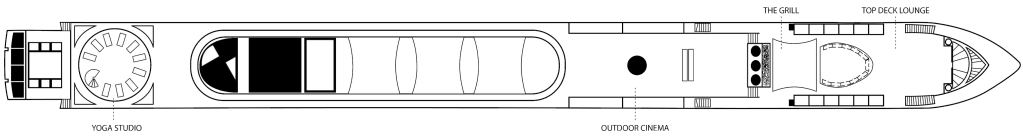
Upper Deck: #S301, S305, S306

These one-bedroom suites are located at the front of the Upper Deck and provide 420 square feet of space, including a separate sitting room. Large floor-to-ceiling windows and sash window balconies create a seamless indoor-outdoor connection. The bedroom includes a European king bed or two twin beds (configured upon request), 55-inch smart TV, desk and chair, minibar, individual climate control and ample storage including four wardrobes.



Deck Plans

Sun Deck



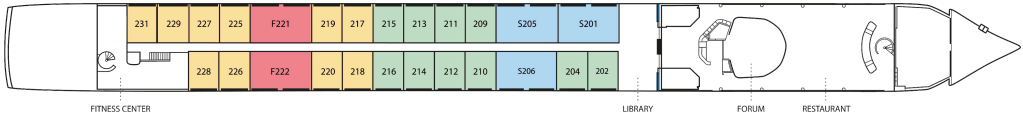
Upper Deck

-  **Category C3**
-  **Category C4**
-  **Category S3**
-  **Category S4**



Main Deck

-  **Category C1**
-  **Category C2**
-  **Category F1**
-  **Category S2**



Ship amenities

Tools for Exploration

A fleet of bikes is available for those who want to enjoy some independent exploration, riding along the canals of Amsterdam or through the French countryside.

Public Spaces

An expansive top deck houses fitness zones, a lounge area and a grill and bar. From dinners to cocktail hours to movie nights, memorable al fresco events will cap off busy days spent exploring ashore.

In Good Company

Explore in the company of veteran Lindblad Expeditions-National Geographic expedition staff, a veteran Expedition Leader, Certified Photo Instructor, as well as Historian, Cultural, Photo and Destination Experts.

