



## ***Delfin III***

---

**Guests**

42

**Suites**

21

---

### **Explore in tropical style on this elegant 42-guest, all-suite river ship**

With just 21 suites in four categories, all with floor-to-ceiling windows, Delfin III sails the Ucayali and Marañón rivers to the confluence of the mighty Amazon in Peru's Upper Amazon year-round with style. Locally built and carrying 30 marvelous crew, most from the region, this elegant ship was inducted into the Relais & Châteaux group, recognizing its commitment to local nature and culture, and its exquisite Amazonian-Peruvian cuisine.

The observation deck, with an open-air Whirlpool hot tub at the stern, has a large lounge and bar accommodating all guests for recaps, presentations, and to take in the passing scenery. Everyone gathers with open, relaxed seating for meals aboard in the spacious dining room. The ship is sustainably furnished featuring hand-made furniture and art and textiles from the surrounding communities that are supported by our guests.

Choose from four categories of large suites aboard: the singular Andes Suite, measuring 597 square feet, with 180-degree windows at the bow to take in the surroundings; two corner Amazon Suites; 10 Upper Suites; and 8 Suites, with en suite facilities, comfortable chair and desk.



# Ship amenities

## Public Areas

Enjoy sweeping views in spacious public spaces including an air-conditioned presentation room and lounge, an open-air sun deck with whirlpool hot tub, small exercise room and wellness spa, and a dining room with a 270-degree panorama. Visit the open bridge, where you are welcome anytime.



## Dining

Meals are artfully prepared, featuring sustainable, locally sourced cuisine. The dining room accommodates all guests for a single seating. Enjoy complimentary beer, wine, cocktails, and spirits aboard the ship (except certain super premium brands which are available for purchase).

## 21 Outside Suites

The spacious, air-conditioned guest suites on two decks offer exceptional river views with floor-to-ceiling windows, including the Andes Suite with 180-degree views and two Amazon Suites with corner windows. Each spacious suite is a serene oasis, redolent of tropical wood and with local textiles and art. The Amazon Suites can be reserved as a triple, with a king and an added twin bed.



## Expedition Tools

Explore the tributaries that feed these rivers and search for wildlife aboard 15-person skiffs, which feature individual seats with cushions and plenty of legroom. Kayaks offer a quiet way to explore remote, seldom-visited side streams.

## Special Features

The Relais & Chateaux designation reflected the food, service and commitment to conservation. Get a true “taste of the region” as much of the food is grown in the surrounding rainforest by local farmers who maintain sustainable agricultural practices. Naturalists are from the area, and you travel with a veteran Lindblad Expeditions National Geographic Expedition Leader and an exclusive certified naturalist-photo instructor.



# Cabin Categories

## Suite

**Main Deck: #103-110**

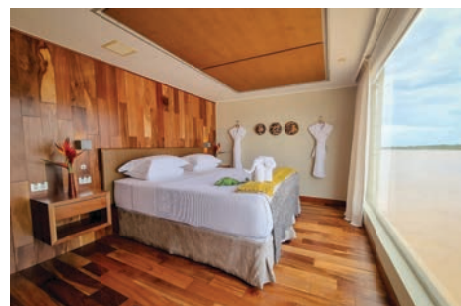
Suites on this deck measure 237 sq.ft. and feature floor-to-ceiling windows for stunning views of the passing life along the river. Includes two twin beds that can convert to a king-size bed, bedside tables with reading lamps, large window, comfortable sitting area with sofa. Bathrooms are spacious with a large shower, and large mirror vanity.



## Upper Suite

**Upper Deck: #202-211**

Upper Suites on this deck measure 237 sq.ft. and feature floor-to-ceiling windows for stunning views of the passing life along the river. Includes two twin beds that can convert to a king-size bed, bedside tables with reading lamps, large window, comfortable sitting area with sofa. Bathrooms are spacious with a large shower, and large mirror vanity.



## Amazon Suite

**Main Deck: #101-102**

Amazon Suites are 270 sq. ft., with oversized windows that provide incredible 90-degree corner views overlooking the river. Configured with a fixed king bed, these suites accommodate triple occupancy in an added twin. Amenities include bedside tables and reading light, ample closet, small sofa chair, and desk. Bathrooms are spacious with a large shower, separate toilet, and sink area.



## Andes Suite

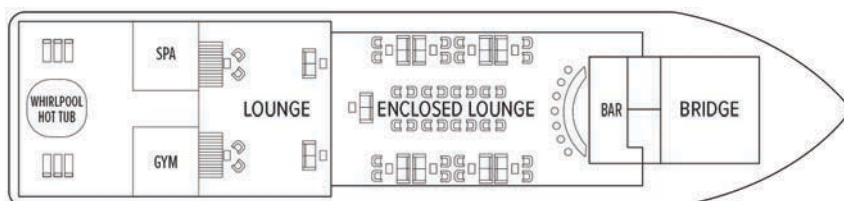
**Upper Deck: #201**

The Andes Suite measures 597 sq.ft. and features a king bed with breathtaking views of the expansive river through forward-facing, 180-degree floor-to-ceiling windows. Amenities include bedside tables with reading lamps, comfortable sitting area with sofa. Bathrooms are spacious with a large shower, and separate bathtub and large mirror with double vanity.



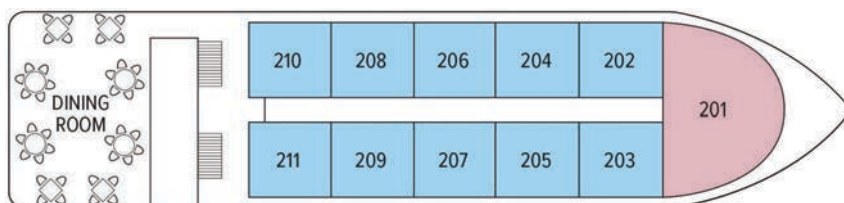
# Deck Plans

## Observation Deck



## Upper Deck

- Upper Suite
- Andes Suite



## Main Deck

- Suite
- Amazon Suite

