



National Geographic Gemini

Guests

48

Cabins

27

A fully equipped Galápagos expedition ship for 48 guests

The newly christened *National Geographic Gemini* joins the Lindblad Expeditions-National Geographic Galápagos fleet with a history and heritage of small-ship expedition cruising. Launched in 2001 from the same shipyard as *National Geographic Orion*, *National Geographic Gemini* is a highly maneuverable, shallow-draft expedition ship purpose built to explore remote areas with ease.

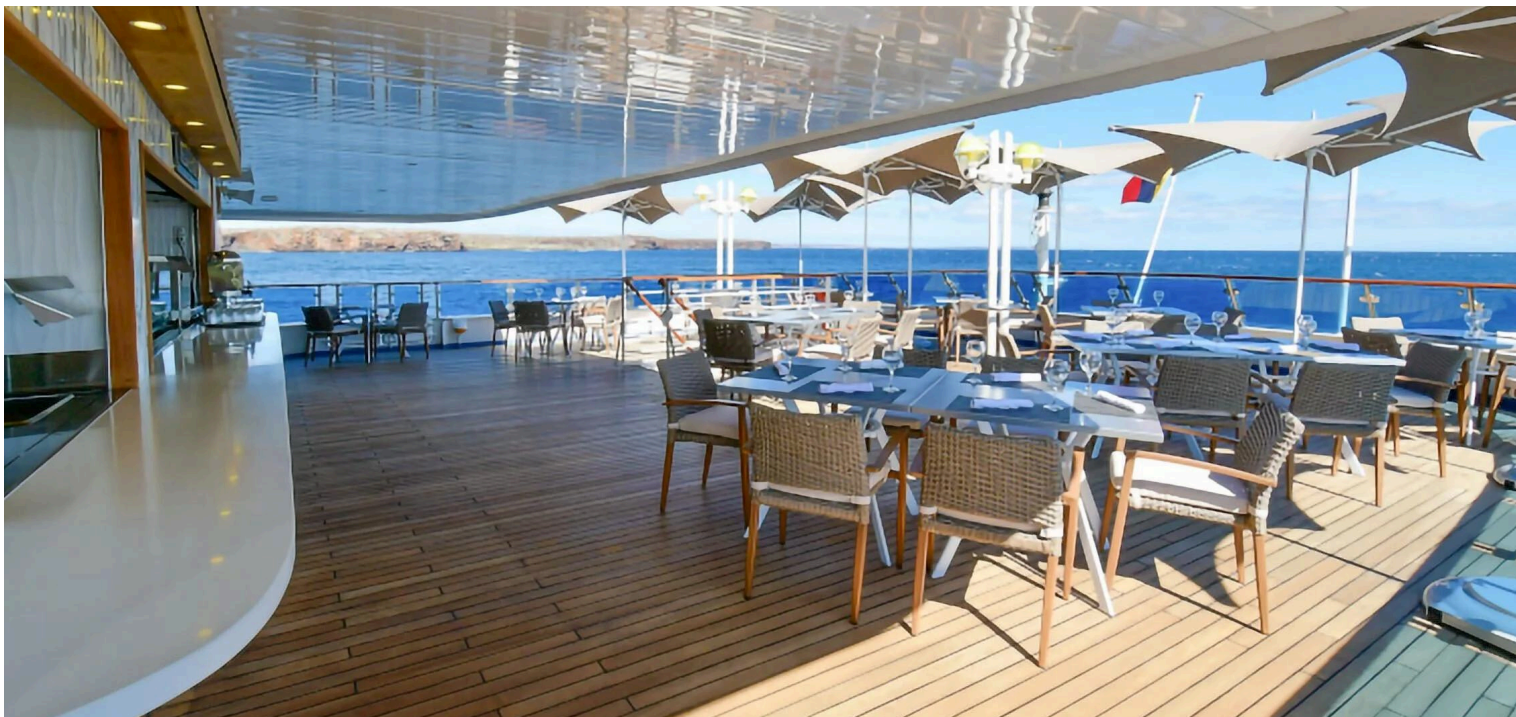
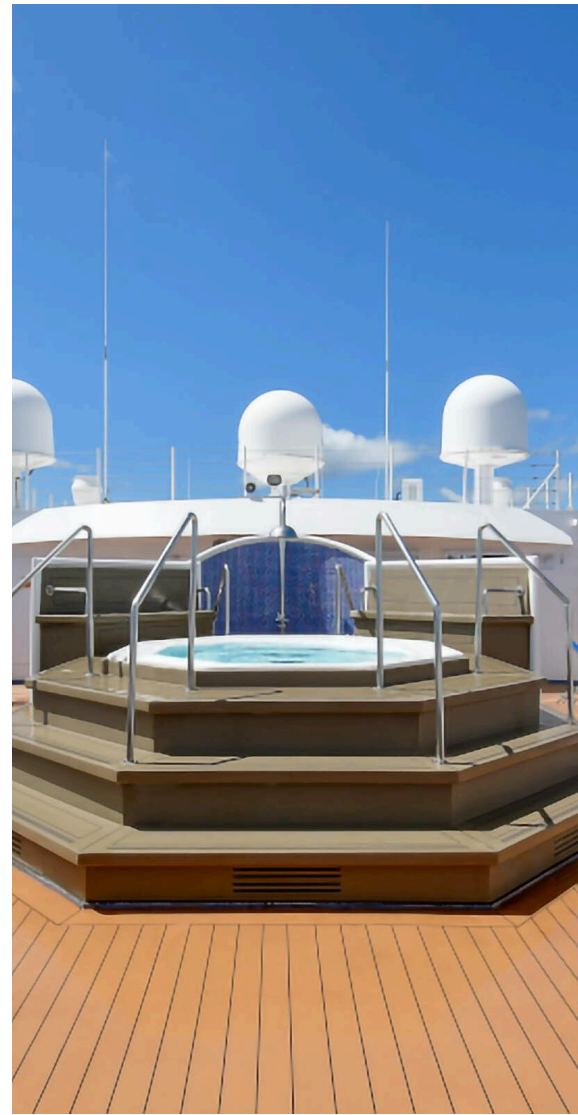
Sailing year round with a maximum of 48 guests on weeklong voyages departing Fridays, *National Geographic Gemini* offers guests the choice of larger suites, cabins with balconies, and a mix of doubles, solos and triples.

All cabins are ocean facing and with ample storage, beds that can be configured as a queen or two twins, a sofa, desk, television and a well-stocked mini fridge. Bathrooms are large and feature glass showers. Suite 601 on the Upper Deck (Category 7) is the largest in the Lindblad Expeditions-National Geographic Galápagos fleet with a separate living room, forward-facing balcony and floor-to-ceiling windows. Cabins on the Bridge Deck (Category 4 & 5S) all have private balconies with seating.

Enjoy the outdoors on the Upper Deck and Bridge Deck, which features a whirlpool hot tub, and windowed fitness center and spa. An outdoor café on the Lounge Deck accommodates all guests in a single open seating, as does the restaurant on the Marina Deck. The open, windowed lounge for presentations and informal gatherings has a large bar and well-stocked library and adjacent reception area.

Carrying a fleet of quick-to-deploy Mark VI Zodiacs, kayaks and stand-up paddleboards, the ship is well-equipped for exploring the islands and marine reserve. It is also stocked with snorkeling gear for all guests, including shortie wetsuits.

National Geographic Gemini provides an authentic sense of place informed by our decades-long relationships with local communities and conservation groups. Contributing to the fully immersive Ecuadorian experience on board is the passionate and knowledgeable Ecuadorian crew. Meals are designed to support the community—comprising locally sourced farm-to-table and ocean-to-table ingredients.

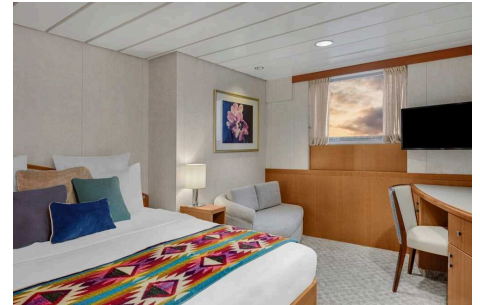


Cabin Categories

Category 1

Lounge Deck: #411, 414, 415, 416

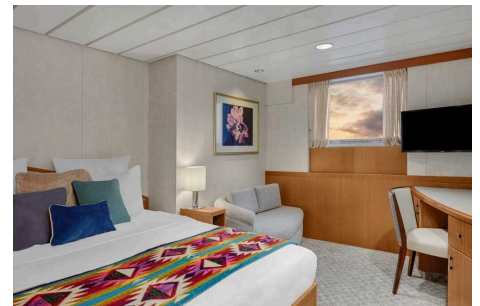
Forward cabins, outside facing with a large window, queen or two twin beds, ample storage, sitting area, desk, mini fridge and television. Bathrooms with a glass shower and amenities. 160 square feet.



Category 2 Solo

Lounge Deck: #401 and 402

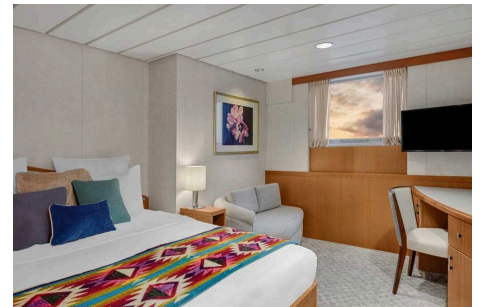
Outside facing with a large window, choice of either a queen or two twin beds, ample storage, sitting area, desk, mini fridge and television. Bathrooms with a glass shower and amenities. Equal in size and amenities to other Category 2 cabins. 160 square feet.



Category 2

Lounge Deck: #403-408, 410, 412

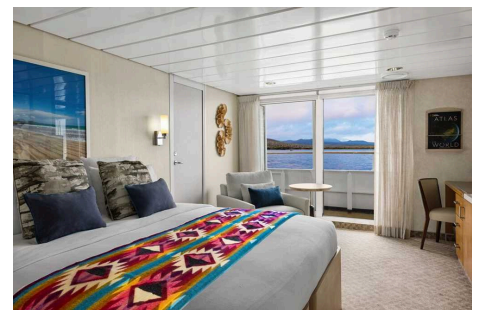
Outside facing with a large window, queen or two twin beds, ample storage, sitting area, desk, mini fridge and television. Bathrooms with a glass shower and amenities. 160 square feet.



Category 4

Bridge Deck: #500-508

Outside facing with floor-to-ceiling glass doors, 50-square-foot balcony with seating, queen or two twin beds, ample storage, sitting area, desk, mini fridge and television. Bathrooms with a glass shower and amenities. 205 square feet. 503/505 and 504/506 connect. 500/503 with convertible sofa bed for triple occupancy.



Category 5 Solo

Bridge Deck: #509

Outside facing with floor-to-ceiling glass doors, 50-square-foot balcony with seating, one queen bed, ample storage, sitting area, desk, mini fridge, and television. Bathrooms with a glass shower and amenities. 175 square feet.



Category 5

Upper Deck: #602

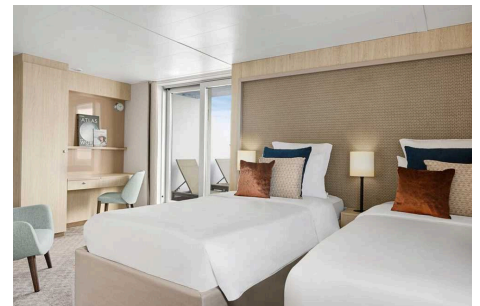
Outside facing with floor-to-ceiling glass doors, 50-square-foot balcony with seating, queen or two twin beds, ample storage, sitting area, desk, mini fridge and television. Bathrooms with a glass shower and amenities. 205 square feet. Connects to 604 as family suite.



Category 6

Upper Deck: #604

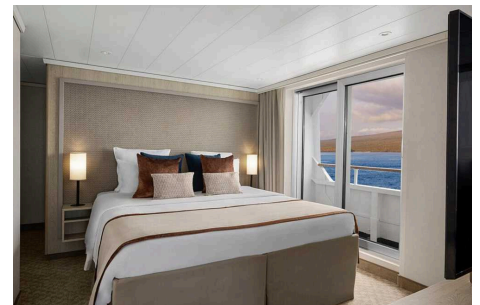
Forward facing with floor-to-ceiling glass doors, 195-square-foot forward-facing balcony with seating, queen or two twin beds, ample storage, sitting area, desk, mini fridge, and television. Bathrooms with a glass shower and amenities. 250 square feet. Connects to 602 as family suite.



Category 7

Upper Deck: #601

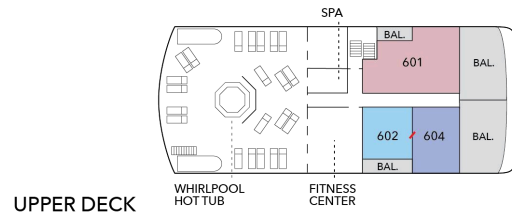
Forward facing with floor-to-ceiling glass doors, separate living room with sofa bed for triple occupancy, and 195-square-foot forward-facing balcony with seating. Bedroom with queen or two twin beds, 50-square-foot side balcony, ample storage, mini fridge, and television. Large bathroom with rain shower. 460 square feet.



Deck Plans

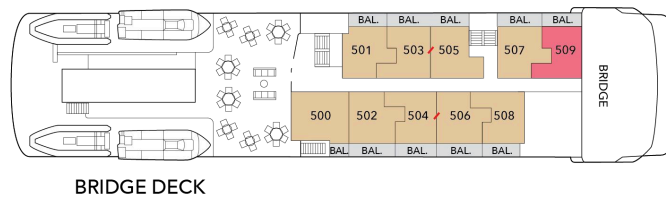
Upper Deck

- Category 5
- Category 6
- Category 7



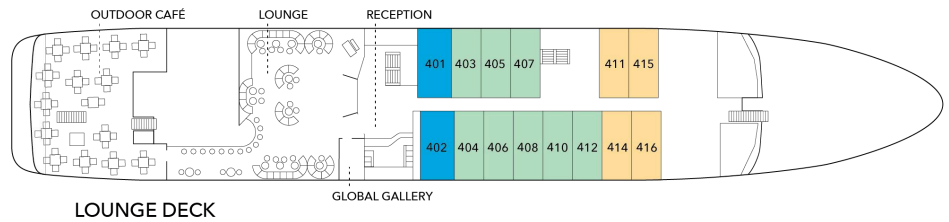
Bridge Deck

- Category 4
- Category 5 Solo

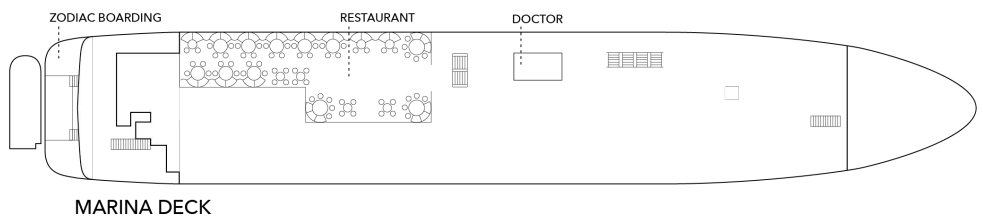


Lounge Deck

- Category 1
- Category 2 Solo
- Category 2



Marina Deck



Ship amenities

Accommodations with Balconies

National Geographic Gemini offers an array of accommodation types, including 13 cabins with private balconies. Cabins on the Bridge Deck (Category 4 & 5S) have private balconies with seating. Suite 601 on the Upper Deck (Category 7) is the largest in the Lindblad Expeditions-National Geographic Galápagos fleet with a separate living room, forward-facing balcony, side balcony, and floor-to-ceiling windows. Cabin 604, which connects with Cabin 602 for the ultimate family suite, is forward facing with a large balcony.

Open-Air Decks

The Upper Deck features an outdoor shower, whirlpool hot tub with adjacent shaded seating area and a windowed fitness center and spa perfect for relaxing. The outdoor café on the Lounge Deck can accommodate all guests in a single seating.

In Good Company

Explore Galápagos in the company of veteran Lindblad Expeditions-National Geographic expedition staff, a veteran Expedition Leader, Undersea Specialist, Certified Photo Instructor, and licensed naturalists. Staff are certified as Field Educators to offer the National Geographic Explorers-in-Training program for kids and teens.

**Note:**

All images are for reference only. The final ship design will evolve following a multi-million-dollar renovation.